

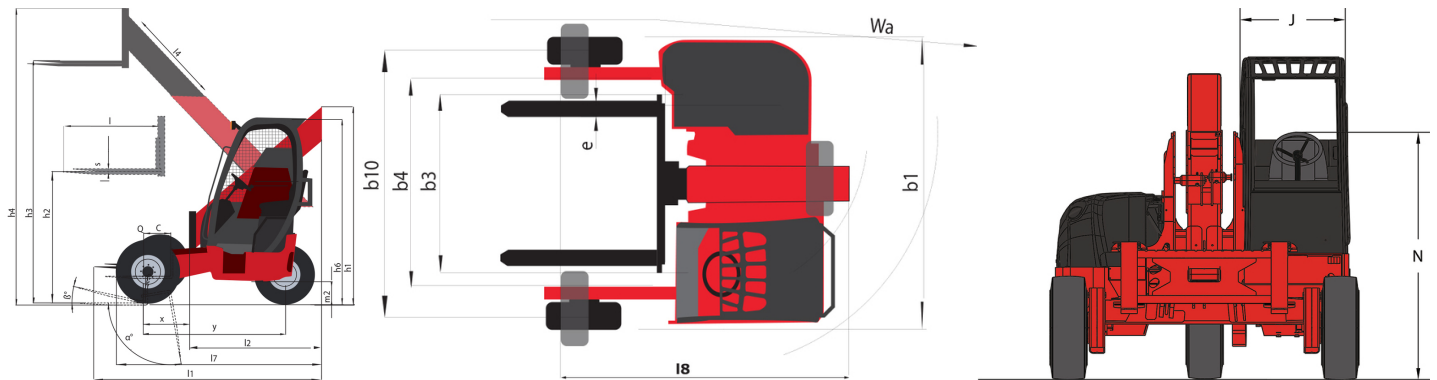
Technical sheet :

TMT 55 XT



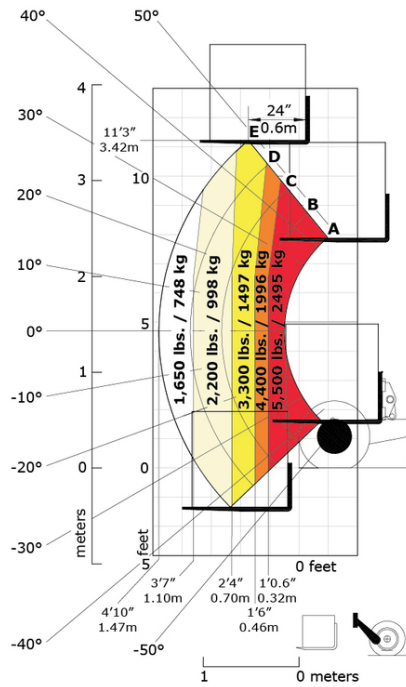
| | Technical characteristics | | Metric |
|-------|--|-----------|--------------------------|
| 1.1 | Manufacturer | | Manitou |
| 1.2 | Model Name | | TMT 55 XT |
| 1.2.1 | Reach out equipment | | Telescopic boom |
| 1.3 | Power source | | Diesel |
| 1.4 | Operator type | | Sitting |
| 1.5 | Max. capacity | Q | 2500 kg |
| | Weight | | |
| 2.1 | Service weight | | 2660 kg |
| | Wheels | | |
| 3.2 | Dimensions of front wheels | | 31 x 15,5 - 15" |
| 3.3 | Dimensions of rear wheels | | 31 x 15,5 - 15" |
| 3.5 | Number of front wheels / rear wheels | | 2 / 1 |
| 3.5.2 | Drive wheels (front / rear) | | 2 / 1 |
| | Dimensions | | |
| 4.4 | Max. lifting height | h3 | 3430 mm |
| 4.5 | Height telescopic boom extended | h4 | 3915 mm |
| 4.21 | Overall width | b1 | 2.57 m |
| 4.22 | Forks section / width / length | s / e / l | 44 mm x 102 mm / 1219 mm |
| 4.28 | Max. outreach | | 1310 mm |
| 4.35 | Turning radius | Wa | 274 m |
| | Performances | | |
| 5.1 | Travel speed (laden) | | 11 km/h |
| 5.10 | Service brake | | Hydrostatic |
| 5.11 | Transmission type | | Hydrostatic |
| | Engine | | |
| 7.1 | Engine brand / nom | | Kubota - Tier 4 final |
| 7.2 | Engine power according to ISO 1585 | | 37 kW |
| 7.3 | Rated speed | | 2700 rpm |
| 7.4 | Capacity of cylinders | | 2434 cm³ |
| | Miscellaneous | | |
| 8.2 | Working hydraulic pressure for attachments | | 245 bar |
| 8.3 | Oil flow rate for attachments | | 46 l/min |

TMT 55 XT - Dimensional drawing

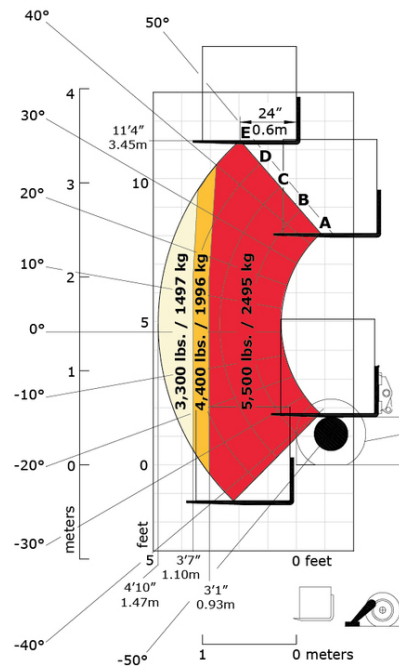


TMT 55 XT - Load chart

Machine on tyres with forks Metric



Machine on stabilizers with forks Metric





Head Office

B.P. 249 - 430 rue de l'Aubinière

44150 Ancenis Cedex - France

Tel: +33 (0)2 40 09 10 11 - Fax: +33 (0)2 40 09 10 97

www.manitou.com



This publication provides a description of the configuration versions and options for Manitou products, which may differ for equipment. The equipment presented in this brochure may be part of a series, as an option, or it may not be available, depending on the versions. Manitou reserves the right, at any time and without notice, to amend the specifications described and represented. The specifications provided do not bind the manufacturer. For more details, please contact your Manitou agent. This is not a contractually binding document. The presentation of the products is not contractually binding. List of specifications non-exhaustive. The logos as well as the visual identity of the company are owned by Manitou and cannot be used without authorisation. All rights reserved. The photos and diagrams contained in this brochure are only provided for consultation and information purposes.

MANITOU BF SA - Limited company with board of directors - Share capital: 39,668,399 euros - 857 802 508 RCS Nantes