

T4512



WEIDEMANN
designed for work



Next Generation.

The compact telehandler T4512.

A whole new machine awaits you!

The compact Weidemann telehandler T4512 is unique in their combination of lift height, width and machine performance. With a lift height of 4.50 m, you can accomplish a wide variety of stacking and loading tasks. Even most board walls can be easily overcome. The payload is a remarkable 1.25 tons, so that large bales of any type or various material weights present no problem at all. The compact dimensions with 1.56 m in width and a height of under 2 m are the real highlights of this machine. With these "dream dimensions", the telehandler can manage low passageways and can drive into tight spaces and work optimally indoors. All these factors have made our T4512 a market success for over 10 years - and it's now gearing up for the next round: with the conversion of the engine for compliance with exhaust standard emissions stage V, the telehandler T4512 has been completely modified. Get excited for the new product features, which will make your daily work even better!

Variety in the outfitting. The Weidemann telehandlers feature comprehensive and sturdy standard equipment. The engine, drive, hydraulics, or even tires can be individually configured depending on application, purpose, and preference. Your Weidemann is always custom-made.

Good service access. The engine hood with gas compression springs can be opened easily with just one handle for regular service and maintenance jobs. The hydraulic oil tank, air filter, engine oil filling, oil level dipstick, and coolant are therefore easily and quickly accessible - real added comfort.

A multi-tool for various applications. Whether it's for stacking, moving materials, sweeping, mowing, or for transport: thanks to the enormous variety of attachments, your Weidemann becomes an all-purpose multi-tool.

Improved view upwards. The windowpane stretches high above you, offering you a superb view of the work area while telescoping in and out. Three wiper blades, (front, rear, and roof) ensure optimal visibility at any time!

Comfort is top priority. New features in the cab include a 3-pole socket as standard, a folding armrest with storage compartment and a cup holder and storage net. A radio and a USB connection is also optionally available.

Three types of steering for maximum flexibility.



All-wheel steering. Total maneuverability and power in the smallest of areas.



Front axle steering. For safe driving even at higher speeds.



Crab steering. Sideways driving for ultra-precise maneuvering in confined spaces, such as when working against walls.

Electronically regulated drive system - Weidemann ecDrive.

With the new electronically regulated drive system ecDrive (Electronic Controlled Drive), the machine can be operated and used in complete accordance with your needs. Four different driving modes were implemented by Weidemann specifically for this purpose. The following driving modes come standard:

- **Auto-Mode:** ensures the accustomed 100% performance of the machine.
- **ECO-Mode:** once the desired vehicle speed has been reached, the engine speed is reduced to 2,200 rpm ensuring both noise reduction and fuel savings.

The other two driving modes are specially designed for the use of hydraulically operated attachments or the optimized execution of the loading cycle. One of the following two driving modes can be selected optionally for this purpose:

- **Attachment-Mode:** this mode is perfectly suited for the use of attachments. In this mode, you adjust the rpm of the diesel engine with the hand throttle and control the driving speed with the accelerator pedal or the cruise control. This enables you to make very fine adjustments of 0.10 km/h to your speed via the display. This guarantees a constant forward momentum for the attachment. If the load on the attachment becomes too high (e.g. various cuttings in front of a mulcher), the machine automatically reduces speed to give the attachment the highest performance possible. When the load is removed, the machine returns to the preset speed. This is a cruise control function. However, if you want to carry out driving or reversing movements faster, you can override at any time by operating the foot pedal and even bring the machine to maximum speed.
- **M-Drive Mode:** this mode is the perfect choice for execution of the loading cycle. In this mode, you adjust the rpm of the diesel engine with the hand throttle and control the driving speed or control pressure with the accelerator pedal. This eliminates the need for inching and supports the execution of fast loading cycles.

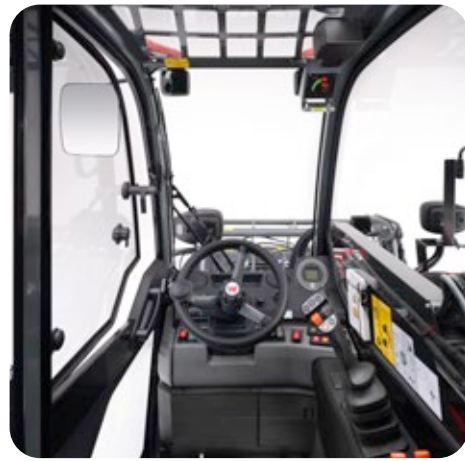


The unique vis (Vertical Lift System).

Weidemann's patented driver assistance system, which is unique on the market and already well established, increases the stability of the machine and continues to be used in the T4512.

The vis (Vertical Lift System) makes a fluid working principle possible and, through a partially automated telescoping movement, supports work in a complex operating environment. Due to the nearly vertical lifting or lowering movement, the stability of the machine is improved. The fluid working principle, the avoidance of a reduced lowering speed for safety reasons, and the facilitated machine operation increase the handling efficiency of the machine. Experienced drivers can work faster and more safely with the vis. Less experienced drivers receive valuable support for lifting and loading work.





Ergonomically comfortable and good all-around visibility.
The ergonomic comfort cabin offers a clear switch arrangement based on a color system. All operating elements are within easy reach and the driver always has the most important machine information in view via the optimally positioned display. The steering wheel can be individually adjusted to suit the requirements of the driver. This ensures that every driver can work with the machine ergonomically and without fatigue. The all-round visibility is excellent due to the compactness of the machine.

Everything is at your fingertips with the multifunction joystick.
The continuous function of the 3rd control circuit is simply activated via the rocker switch on the keypad and can be conveniently operated proportionally with the joystick - in both directions as well through continuous deflection on the adjustment wheel. Telescoping is proportionally possible via the thumbwheel. The operating speed can thus be individually adjusted. In addition, the two electrical functions can be operated by touching or locking the joystick. Both electric functions are independent so that they can be individually configured by the operator.

The right engine for your application.
The entry-level engine of the T4512 delivers 18.4 kW / 25 hp. The big advantage is that it complies with exhaust gas standard stage V and does not require any exhaust after treatment at all. This motorization is therefore well suited for users who tend to demand fewer operating hours from their machine. An engine with 33.3 kW / 45 hp is also optionally available. Here, emission standard stage V was implemented by installing a diesel particulate filter (DPF) in combination with a diesel oxidation catalyst (DOC). Urea solution (DEF) does not need to be added with this technology. The entire engine unit, including the exhaust after treatment system, come from Yanmar, so that all components are perfectly coordinated and the machine automatically regenerates at the appropriate operating temperature.

Specifications and dimensions.

ENGINE DATA

Drive manufacturer	Yanmar
Type of drive	3TNV80FT
Cylinders	3
Max. engine output kW/hp	18.4 / 25
At max. speed rpm	2,600
Displacement cm ³	1,226
Exhaust standard level	V
Exhaust after-treatment	-

OPTIONAL ENGINE DATA

Drive manufacturer	Yanmar
Type of drive	3TNV86CHT
Cylinders	3
Max. engine output kW/hp	33.3 / 45.3
At max. speed rpm	2,600
Displacement cm ³	1,568
Exhaust standard level	V
Exhaust after-treatment	DOC/DPF

WEIGHTS

Operating weight (standard) kg	2,750-2,900
Payload (max.) kg	1,250

VEHICLE DATA

Driving speed (optional) km/h	0-20 (30)
Fuel tank capacity l	33
Hydraulic oil tank capacity l	36

HYDRAULIC SYSTEM

Drive hydraulics working pressure bar	380
Work hydraulics discharge volume l/min	28.6 (41.6-70)
Work hydraulics working pressure bar	220

DIMENSIONS

Standard tyres	10.0/75-15.3 AS ET-40 Starco
Total length with bucket mm	3,944
Height with cab mm	1,995
Max. height bucket pivot point mm	4,537
Total width mm	1,564
Inner radius mm	951

T4512

Yanmar
3TNV80FT
3
18.4 / 25
2,600
1,226
V
-

Yanmar
3TNV86CHT
3
33.3 / 45.3
2,600
1,568
V
DOC/DPF

2,750-2,900
1,250

0-20 (30)
33
36

380
28.6 (41.6-70)
220

10.0/75-15.3 AS ET-40 Starco
3,944
1,995
4,537
1,564
951



Electric parking brake.
The new electric parking brake offers both an Auto-hold function as well as a Hill-hold function. The brake is applied automatically when the machine is stationary, the direction of travel is set to neutral, or the driver leaves the seat. Similarly, the parking brake is automatically released when the machine is started by the accelerator pedal. The brake can also be activated or deactivated manually by pressing a switch.

Pressure release of 3rd control circuit.
The telehandler T4512 offers a special feature for the coupling and decoupling of hydraulically operated attachments: the button for the pressure release of the 3rd control circuit is easily accessible from outside on the telescopic arm. In this way, different attachments can be replaced even faster and more efficiently. This works with the ignition switched on or the engine running. In addition, the smooth and effortless Flat-Face couplings are already standard.

Wonderful working atmosphere.
Improvements have also been made to the working climate in the new T4512: the working climate in the cab has been significantly improved by installing a new, even more efficient heating and ventilation system with fan, fresh air filter, and well-placed air nozzles. For particularly warm outside temperatures, the optionally available powerful air conditioning system is recommended. In addition, both the large upper door window and the rear window can be opened for additional ventilation. And as with the predecessor, the upper door panel can also be opened completely by 180° and can be locked to the rear of the cab.



WEIDEMANN
designed for work

The Weidemann product range.



The multifunctional Hoftracs®.

Powerful helper for every application.
Our innovation: the fully electric 1160
eHoftrac®.



The powerful wheel loader.

Available either with loading arm or telescopic boom.



The compact telehandler.

Aim high with optimal stability.



Attachments and tyres.

Your Weidemann machine becomes a multi-tool!
The optimal attachment and the right tyres for
every task.



WM.EMEA.10336.V01.EN/09/2020

Weidemann GmbH

Mühlhäuser Weg 45 - 49
34519 Diemelsee-Flechtdorf
Germany
Tel. +49(0)5631 50 16 94 0
Fax +49(0)5631 50 16 94 666
info@weidemann.de
www.weidemann.de