

AG SHIELD



LAND ROLLER Full Line

Benefits of Rolling

Bury rocks –prevent damage to combines and balers



Before rolling



After rolling

Benefits of Rolling

Keep your harvest smooooth



Leaves smooth fields to speed harvest of low podded crops

Benefits of Rolling



**Much less dirt picked up = clean sample = better grades & safer storage
Firm smooth ground not “pushed” by low headers in a wet fall**

Benefits of Rolling



Crop residues break down *FASTER* with better soil contact

Benefits of Rolling



Firm seed bed provides quicker, more uniform germination

Benefits of rolling



- **Smooth fields improve chemical application**

Options that get the job done

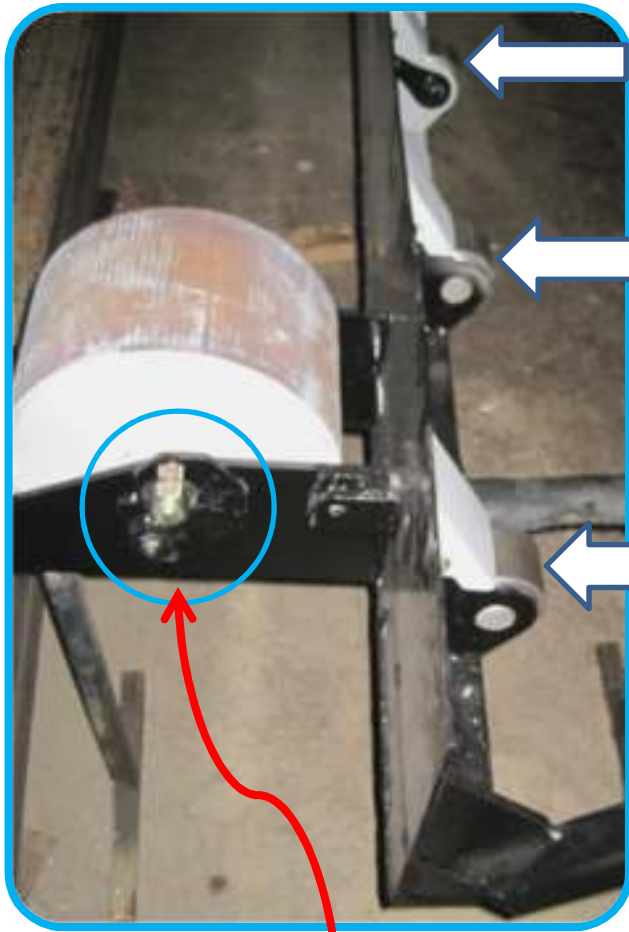


Eliminate saplings when they get knocked over and bark peeled.



Leveling blades on sizes up to 50 feet eliminate animal mounds. Peel and spread even old sodded ones and distribute and firm the shaved material.

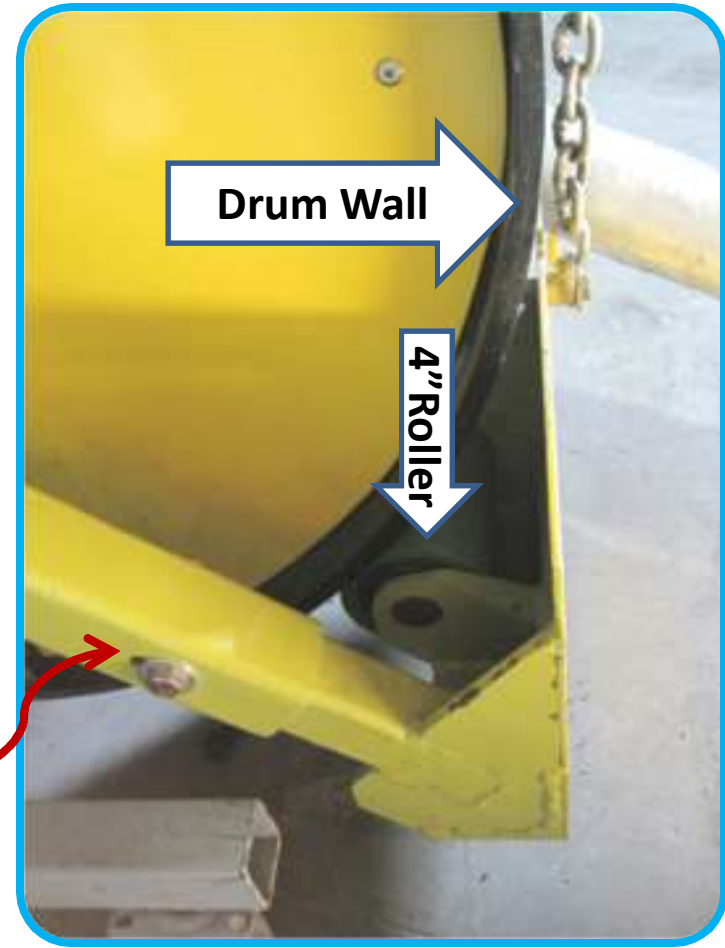
How the leveling blades work



4"rollers on
18" centers
ride on drum

compression
springs inside
carrier arm
prevent drum
contact when
not pushing

Adjustable gauge wheels control
depth from $\frac{3}{4}$ " & $2 \frac{1}{2}$ " above level



Drum Wall

4"Roller



46 ft with leveling blades in transport



Pasture Doctor



**As you're leveling add some seed to cover the bare areas
Add legumes to pastures to improve feed quality
Level, seed alfalfa and firm up your pivots with one pass**

Options that get the job done



PowerFold wheel rotates 90 degrees from transport and the hydraulic motor powers the unit to field position. Open the roller to field position with NO driving. Make a train to complete seeding and rolling in one pass. Save time and fuel and always get your crops rolled on time.

Options that get the job done



Water fill option lets you add up to 550 pounds per foot of extra weight for rolling on hard ground (old pastures etc). 2 and 3 inch fill Banjo couplers and 2 inch vent coupler permit quick fill and empty



Available bolt-on cleats used to destroy cover crops on organic ground



17 ft single drum

46 ft 3 section

70 ft 5 section

31 ft 3 section

- PASTURE DOCTOR**
- 1.20 ft single drum**
 - 2.Hydraulic fold with**
 - 3.Leveling blade and**
 - 4.Mounted air seeder**

The complete LAND ROLLER Line



17 ft with leveler

Single Drum Units



20 ft pivot unit with leveler in field



in transport

3 plex with leveling blades



46 foot 3 plex unit



Diagonal braces eliminate center frame cracking

Five plex units to 70 ft



Five plex units to 70 ft



Easy transport

Sizes to 70 feet (62 ft. shown) all transport ONLY 13.5 feet wide.

Rear wheel castors for tighter turning radius than other brands

Follows contours – terraces etc.

Wide flat face transport tires double as gap packers in field position



Narrow transport -
12 ½ feet on 3 plex, 13 ½ feet on 5 plex



Easier, safer transport - stay on your side of the road

Ag Shield Built to Outperform the rest

	Ag Shield	Riteway	Degelman	Summers	Mandako	Tebben	Empire
Sizes	11.5 – 70 ft.	11 – 85 ft.	20 – 80 ft.		10 – 60 ft.	7 – 62 ft.	12 – 60 ft
Roll Diam.	42"	42"	36"	42"	42"	42"	36 & 42"
Thickness	.530-.562	.530-.562	.480	.56	.56-	.600	
Optional?	.625- .696	?	?	.625	.625-.75		
Shaft Size	2.5 not welded	2.44 not welded	2.44 welded	2.44	3.0 welded	2.44 not	
Bearing size	213 (25% over 212)	212					
Bearing flange	Ductile iron-44000 psi	Cast iron -20,000					
Lbs/ft.	450 std barrels	450	350	475	475	??	
Standard fold	Hyd wheel turn- Easi fold	Angle / hydr	Angle wheels	overhead	angle	angle	
Optional fold	Powerfold- sit and watch it happen	3 handed forward fold- 2 hyd levers	Cyl assist fold/ then back up		Hyd angle \$970 extra		
Floating hitch	Hydraulic lock- unlock - std	Slams drawbar	Manual floating		Fixed – hyd opt \$1000	optional	
Water fill	Optional	No	Yes	Yes	Yes	?	
Field latch system	Diagonal arm to outer end of inner frame low	Diagonal to high inner frame center	Diagonal to high inner	various	Inner hinge only-weak	Inner hinge only-weak	
Land levelers	Yes to 52 ' wide	No	No	No	No	No	No
Transport	150" all 3 section 162" all 5 section	163"-190"			149"		
Seed delivery	Factory available	no	no	no	No	No	No
Acrometer	Reads out acres	Calculate from chart					
Barrel Scraper	optional	Not available					

Why AG SHIELD

- **30 years of innovative agricultural equipment manufacturing experience**
- **Reputation for Quality Products**
- **Complete roller line with several unique features to meet YOUR needs**
- **All products painted epoxy primer and urethane top coat for durability**

AG SHIELD Mfg.



Plant @ Benito, Manitoba, Canada

North America toll free 800.561.0132 , Offshore 204.539.2000

www.agshield.com Ag Shield videos @ <http://www.youtube.com/AgShield>