

Schäffer

2345 T - 9660 T

Low style loaders:
2345 T SLT | 3550 T SLT

TELESCOPIC WHEEL LOADERS

Performance redefined



SCHÄFFER

For over 60 years, we have been developing loaders to meet individual requirements. Customer satisfaction has made us what we are today: one of the most capable and successful suppliers of farm loaders, wheel loaders and telescopic wheel loaders ever. Every day our employees create new, customised solutions.

Every Schäffer loader is the result of years of experience and innovative thinking. Our products set the standard in terms of the highest possible reliability and durability. You can rely on Schäffer for lower costs throughout the whole operating life, and for performance, safety and driving comfort for many years to come.

SCHÄFFER TELESCOPIC WHEEL LOADERS: THE FUTURE OF PERFORMANCE.

When it comes to articulated telescopic loaders, Schäffer machines are the most successful in their class. Precision performance on any terrain, with lifting heights and loads that you will not find in comparable machines from our competitors. The compact design, characteristic of all Schäffer loaders, makes them easy to use particularly in

hard-to-reach areas. Add user-friendly controls found in all our models, and you have the perfect material handling solution. All loaders have the renowned Schäffer reliability whilst our design engineers have focused on rugged, modern styling to match the powerful performance of the machines.

The performance class:



2345 T 33 kW (45 HP)



2345 T SLT 33 kW (45 HP)



3550 T 37 kW (50 HP)



3550 T SLT 37 kW (50 HP)



5650 T 37 kW (50 HP)



5680 T 55 kW (75 HP)



6680 T 55 kW (75 HP)



8620 T 75 kW (102 HP)
90 kW (122 HP)



9640 T 100 kW (136 HP)



9660 T 115 kW (157 HP)



Schäffer loaders in action:
www.schaeffer.de/en/videos

SCHÄFFER 2345 T

HTF: MAXIMUM THRUST, EVEN IN HIGH GEAR



HTF, or 'High Traction Force', automatically regulates the thrust so the loader can supply the highest possible thrust even in a high gear. HTF uses a new axial piston-bent axis motor that regulates speed automatically depending on the traction. This is particularly useful in an uphill position as the driver does not have to switch to first gear.

HTF comes into its own when digging into aggregate material - if more thrust is required, the hydraulic motor adapts automatically, without the driver having to interfere manually. This means most of the work can be done in fast gear, increasing driving comfort and speeding up work. All Schäffer telescopic

wheel loaders (except the 2345 T SLT) are equipped and delivered with the HTF-drive as standard.

Benefits:

- Very high thrust forces
- No need to manually shift down a gear when going uphill
- Even at high speed the maximum thrust is always available, e.g. when driving in muck heaps
- Enhanced driving comfort, faster working

2345 T: THE COMPACT TELE WHEEL LOADER

Compact telescopic wheel loaders can be used as universal working machines in all kinds of areas. Weighing 3 t, the 2345 T telescopic wheel loader is the perfect combination of strength, lifting height, range and manoeuvrability. With a far greater lifting height and range than other compact wheel loaders, the 2345 T opens up a whole range of possibilities.

With a lifting height of 3.75 m, it can load most HGVs with ease. And there's no compromise with lifting capacity either - the 2345 T has an enviable tipping load of up to 1.65 t, more than enough to make a real impact. Articulated steering and compact dimensions make the 2345 T extremely manoeuvrable - to the extent that more manual tasks can be mechanised where conventional wheel loaders were simply too big and awkward to operate.



The 2345 T is also available as an extra low version, standing just 1.95m tall. This machine can also be equipped with a cabin - unique in its class.



SCHÄFFER 3550 T



3550 T: THE COMPACT TELESCOPIC WHEEL LOADER WITH HIGH STANDARDS



The 3550 T offers an ideal combination of thrust and lifting height in a compact package. The newly designed HTF drive supplies enormous traction force, drawing on the 480 bar of pressure in the drive system and improved hydraulic

efficiency. With automatic control, the full traction force is also available in high gear. The machine's maximum speed is 20 kph, with a 28 kph option available which can be certified for road use if specified.

When it comes to their technical details, Schäffer's compact telescopic wheel loaders more than measure up. Wear and maintenance-free Ferro-Form sliding elements in the telescopic boom, alongside the 7 t heavy-duty axles will ensure that your loader provides years of problem-free service. The articulated/pendulum joint and the oil-immersed multiple disc brake are both maintenance-free.

The 3550 T is well-powered with a 37 kW (50 HP) engine, so it can handle challenging tasks, and offers more agility and greater driving fun.



ELECTRONICALLY REGULATED DRIVE OFFERING MORE COMFORT



Our new Kubota motor offers the highest possible torque in its class and is unique in the market of 37 kW / 50 HP loaders due to an electronically regulated drive – SPT or 'Schäffer Power Transmission'. The drive is adapted to the torque of the diesel engine, for a multitude of advantages: operating costs decrease as the diesel fuel consumption is reduced. Hill starts are a lot easier as the start-up assistant helps prevent the vehicle moving backwards.

The optional potentiometer acts as a cruise control. The loader keeps a constant speed automatically and independently from the motor speed – especially convenient when working with fodder dosing devices, straw distributors, mulchers or sweepers.

Additionally, there are several new safety functions, for example protection from overheating and motor over-revving protection, making working with the loader safer

and more reliable. SPT is standard on the **3550 T, 5650 T and 8620 T** and is available as an option for the **9600 series**.

Benefits:

- Higher efficiency, lower fuel consumption and reduced operating costs
- Extra safety functions including overheating and over rotation protection to make the loader safer and more reliable
- 'Start up assistant' to make hill starts easier
- Different parameters for different drive characteristics
- Optional potentiometer that works to maintain a constant speed regardless of the motor speed. This is particularly useful when working with feed dosing units, straw spreaders, mulchers or sweepers (using pedal control on 9640 T and 9660 T)
- Greater agility and more driving fun!

TELESCOPIC WHEEL LOADER 3550 T SLT

The SLT variant is a lower machine, with an overall height of just 2.02 meters. This makes the 3550 T SLT perfect for low passages or doorways, whilst the deep centre of gravity allows greater stability and bigger tipping loads. The lifting height is 3.85 m.

The unique combination of compact machine size, high manoeuvrability, excellent reach and lifting height makes the 3550 T SLT a very versatile machine.

Original Schäffer axles for maximum thrust

Original Schäffer axles are adjusted to each particular loader – that's the secret of their outstanding pushing power, as proved by independent tests. Safety is another important benefit of Schäffer axles. For the 3550 T, the permitted load bearing capacity is 7 t per axle. All telescopic wheel loaders



are equipped with an oil-immersed, capsuled, multi-disc brake. Not only do they deliver optimal deceleration values, they are also totally maintenance-free. Dirt, dust and humidity don't stand a chance. These are brakes you can always count on.



SCHÄFFER 5650 T | 5680 T



SCHÄFFER **HTF** 5680 T

The 5680 T pivot steered telescopic wheel loader offers maximum comfort for long working days. With a generously sized cabin and the high seating position, plus clear roof with no cross bar, the driver has a great all-round view for safe and productive working. The enclosed cabin and quiet-running diesel engine means noise levels are low too.

The 5680 T has got a Deutz turbo engine with 55 kW [75 HP]. The hydrostatic drive combines the best controllability and highest pushing power, and since all components of the drive train are perfectly matched, the fuel is converted into power sparingly and effectively, so even the strictest emission standards in this class are met.

The maximum lifting height is 4.70 m. The 5680 T can be delivered with a protection roof instead of the cabin if requested.

5650 T: Equipped with a 37 kW / 50 HP Kubota engine and electronically regulated drive (SPT)

The 5650 T is equipped with an efficient 37 kW / 50 HP Kubota engine and offers an interesting alternative for customers with a lower investment volume. The machine is equipped with Schäffer Power Transmission (SPT) as standard, guaranteeing increased efficiency and comfort.



SPT 

SCHÄFFER 6680 T



6680 T: THE NEW MEASURE



With its working weight of 5.6 t to 6.3 t, the 6680 T is the smallest loader in the professional class. The loader is driven by the latest generation 55 kW (75 HP) Deutz turbo diesel engine. It uses a diesel oxidation catalyst that eliminates the need for a diesel particle filter, and because all the components in the hydrostatic drive are perfectly matched to each other, fuel consumption is converted into performance economically and effectively. The thrust is also 20% higher than that of its predecessor.

With an option for a maximum driving speed of up to 35 kph, there are many more possibilities.

The 6680 T is equipped with an 'SCV' (Silence/Comfort/View) cabin. With this the machine sets new standards in its class in terms of driving ergonomics, space and all-round visibility. A lower version that provides more flexibility in terms of overhead clearance is also available.



8620 T, 9640 T AND 9660 T: THE NEXT GENERATION





The 86 and 96 series represent a new generation of telescopic wheel loaders from Schaffer. These loaders all meet the requirements of the exhaust gas level Tier IV final - the 8620 T and the 9640 T achieve this without the need for a diesel particle filter, providing an environmentally-friendly solution with a positive effect on operating costs.

The next generation of loaders also utilise the latest Schaffer efficiency systems – all contributing to environmentally-friendly use of the machines and to the reduction of operating costs. These technologies focus on a more efficient conversion of fuel into performance, while increasing driving comfort. HTF (see page 5) ensures maximum thrust and is standard on all new generation telescopic wheel loaders.

The electronically controlled drive SPT (page 7) comes as standard on the 8620 T and is optionally available for the machines of the 96 series. The particularly economical ECO Mode (page 15), reduces the engine revs while maintaining the same speed - thus minimising fuel consumption.

Machines in the 96 series have the option of the patented 'SDCT' drive - our doubleclutch transmission that combines the advantages of a powershift transmission with those of a purely hydrostatic drive (page 16).

Availability of Schaffer efficiency systems

	8620 T	9640 T	9660 T
HTF 	X	X	X
SPT 	X	O	O
eco Mode 	O	O	O
SDCT 	-	O	O

X = as standard, O = optional

Our next generation machines also have the new SCV-Plus cabin, which sets new standards in terms of comfort, all-round visibility and ergonomics. It is simply one of the best cabins in this machine class.

SCHÄFFER 8620 T



SCHÄFFER 8620 T: COUNTLESS POSSIBILITIES

HTF  **SPT** 

The 8620 T is Schaffer's telescopic wheel loader with a wealth of options so you can configure it to suit your needs. The 8620 T has two engine options: a 75 kW/102 HP or 90 kW/122 HP Deutz engine. The standard driving speed is 20 kph, but there is also an option with a maximum speed of 40 kph - particularly advantageous for use outside the yard.

With an operating weight between 7 and 8 t, a lifting height at the tool pivot point of 5.20 m and a lifting capacity of 4,200 kg, the new 8620 T telescopic wheel loader offers an ideal combination of features for demanding loading work. The loader is equipped with a hydraulically-driven fan as standard. Optionally, it can also be operated in reverse mode at the push of a button. The cooler is cleaned during operation - a benefit in all conditions, but particularly when working in dusty operating conditions.

The drive concept of the 8620 T is also new: HTF (High Traction Force) and SPT (Schaffer Power Transmission) are standard equipment even with the smaller motor.

eco Mode 

The 8620 T is particularly efficient in ECO driving mode, a fixed component of the 40 kph version. If conditions permit, the motor speed will reduce automatically from 2,300 revs to 1,800 revs - while maintaining the same speed. This allows a fuel saving of up to 10%. As well as reduced operating costs, benefits of ECO Mode include lower noise levels and more environmentally-friendly operation. And when higher performance is required again, the electronics automatically switch to the full rotational speed - a smart solution for efficiency and comfort.

SCHÄFFER 9640 T



SCHÄFFER 9640 T: TELESCOPIC WHEEL LOADER FOR HIGHEST DEMANDS



The impressive 9640 T achieves an operating weight between 8,400 kg and 9,700 kg, depending on the ballast. With a payload of up to 4,160 kg, it lifts loads to a height of 5.40m. The loader is powered by a powerful 100 kW /136 HP 4-cylinder Deutz engine of the latest generation. Standard equipment includes the sensitive but extremely powerful load-sensing working hydraulics with a delivery volume of 145 l/min, the robust 24-inch tyres and hydraulically driven fan, which can also be used in reverse operation for easy cleaning.

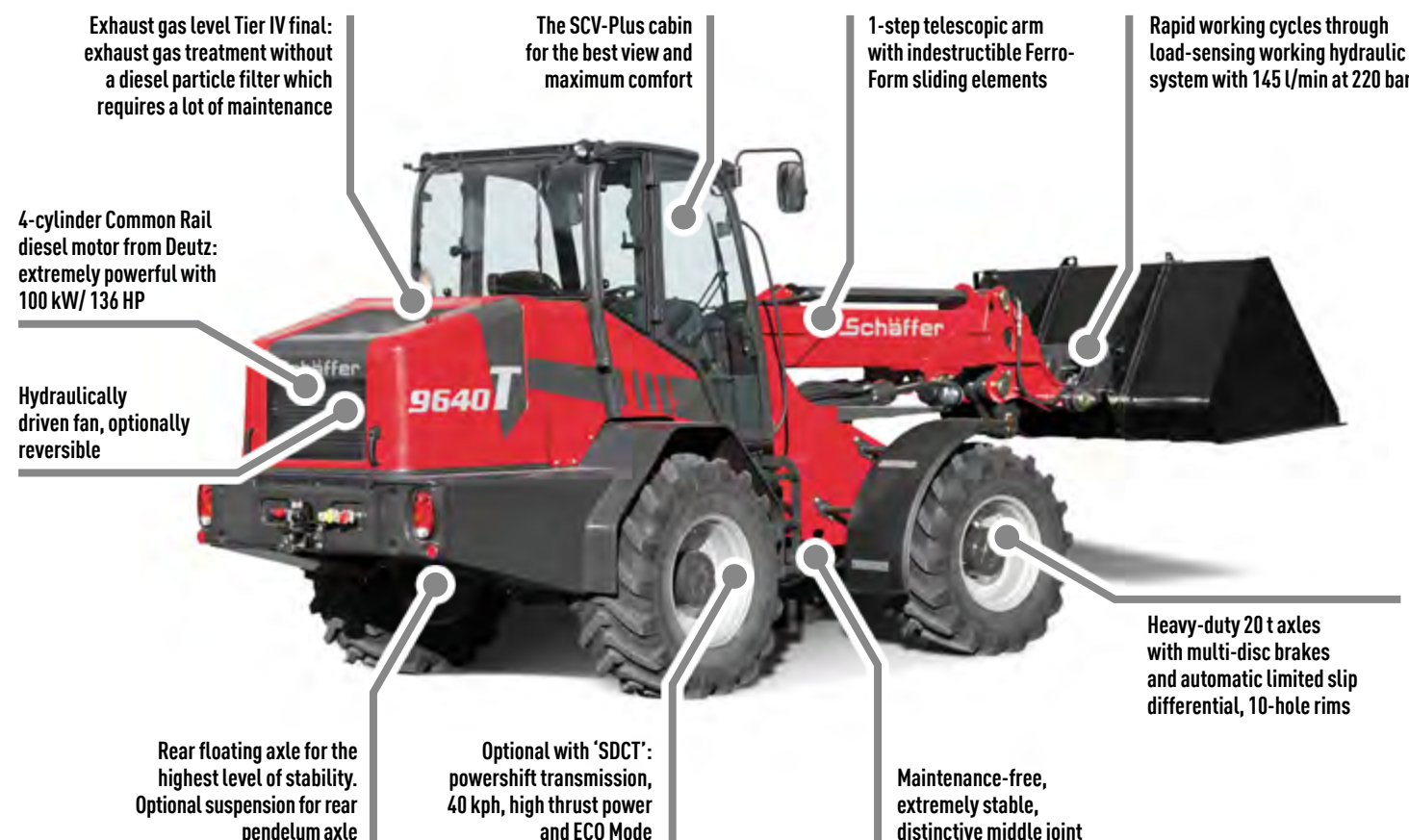


Like the 9660 T, the 9640 T has the option of 'SDCT' including ECO mode. 'SDCT' stands for Schäffer Dual Clutch Transmission. Three driving modes are available which can be shifted under load. In driving mode three, the loader runs at speeds of up to 40 kph, with all the advantages of a hydrostatic drive. In driving mode 2, the loader develops enormous thrust forces

thanks to a dual clutch transmission. The first driving mode additionally limits the maximum speed of the loader to 8 kph - e.g. when rolling a grass silo.

The patented drive allows most work to be carried out without shifting, and the transmission operates with a high degree of efficiency, so that the fuel is converted into power very economically. This is additionally supported by ECO mode, which is standard in the 40 kph version.

With the new SCV Plus cab, the 9640 T offers the best conditions for long working days. It sets high standards in driving comfort and ergonomics.



THE NEW SCV-PLUS CABIN



ERGONOMICS AND COMFORT AT THE HIGHEST LEVEL

Our 8600 and 9600 range of telescopic wheel loaders benefit from the new SCV-Plus cabin. Even at first glance, the tidy dashboard, ergonomic operating elements and the new colour co-ordinated range of switches show that this is the highest quality.

SCV stands for 'Silence, Comfort, View'. In the development of the SCV-Plus cabin, these ideas have been taken one step further. The operating elements are arranged in a more ergonomic way. The joystick is more comfortable to hold, additional functions speed up how you work. The extensive glass area offers the very best all-round visibility.

The ignition switch, along with the control system for the air-conditioning and heating systems is housed in a new console right next to the joystick. Additional, larger air outlets and removable side panels ensure the perfect supply of fresh air. With the new SCV-Plus cabin, the driver has a completely new feeling of ergonomics and comfort – nothing to stand in the way of a long working day.



THE NEW SCV-PLUS CABIN IN DETAIL



New joystick with expanded functionality



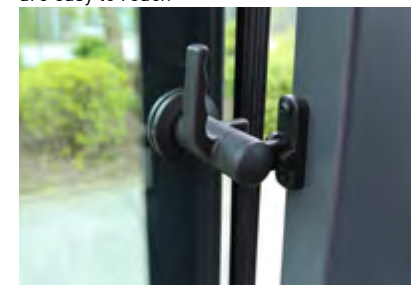
New console: ignition switch, controls for the heating and optional air-conditioning system are easy to reach



Additional, larger air outlets for perfect air circulation / optimised range of switches



12 Volt socket for charging mobile devices / 3-pin device socket



Side panels can be lifted out



New information display in the B-column for the exhaust gas system

SCHÄFFER 9660 T

9660 T: THE TELESCOPIC WHEEL LOADER WITH 6.10 M LIFTING HEIGHT

Schäffer's range of telescopic wheel loaders with articulated joints is the most extensive on the market. With an operating weight up to 13 t and a lifting height of 6.10 m, the 9660 T occupies an exclusive position. The 9660 T is specially developed for the requirements of biogas plants and large scale farms and combines the good all round view and traction force of a standard wheel loader with the lifting height and reach of a conventional telescopic loader.

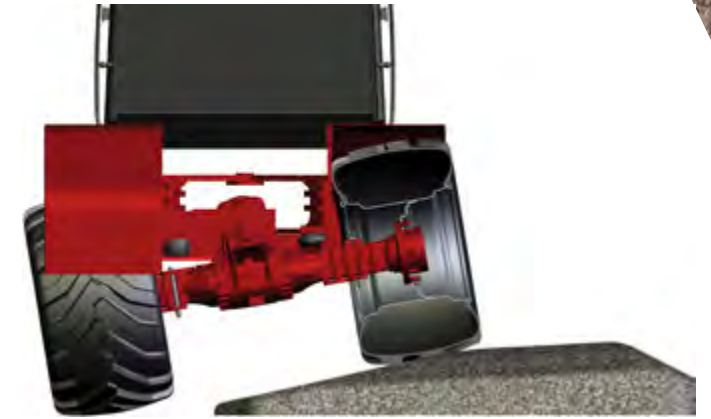
The 9660 T has an operating weight of up to 13 t, the lifting capacity is approx. 5.3 t, making it our largest and most powerful machine. The single-stage telescopic arm is robust enough to withstand even the toughest operating conditions. Ferro-Form sliding elements, as with all Schäffer telescopic wheel loaders, promise a trouble-free telescoping process for many years to come.

The standard flow-sharing hydraulics provide up to 230 l/min and run very quickly even at low engine speeds. The load-sensing working hydraulics are also standard. The 4-cylinder Deutz Common Rail turbo diesel engine with 115 kW (157 HP) works very efficiently as well. With a thrust of over 9,000 daN, the hydrostatic drive delivers the power needed even for the most demanding tasks.

HTF **SPT** **SDCT** **eco Mode**



The articulation joint is very strong and maintenance free. Two steering cylinders give perfect control.



The rear axle is oscillating for best stability. The optional suspension gives safer and more comfortable operation.



9660 T: ADVANTAGES AT A GLANCE



High Traction Force

Benefits:

- Very high thrust forces
- No need to manually shift down a gear when going uphill
- Even at high speed the maximum thrust is always available, e.g. when driving in muck heaps
- Enhanced driving comfort, faster working

With the exception of the 2345 T SLT, HTF is standard equipment of all Schaffer telescopic wheel loaders.



Schaffer Power Transmission

Benefits:

- Higher efficiency, lower fuel consumption and reduced operating costs
- Extra safety functions including overheating and over rotation protection to make the loader safer and more reliable
- 'Start up assistant' to make hill starts easier
- Different parameters for different drive characteristics
- Optional potentiometer that works to maintain a constant speed regardless of the motor speed. This is particularly useful when working with feed dosing units, straw spreaders, mulchers or sweepers
- Greater agility and more driving fun!

SPT is standard on the 3550 T, 5650 T and 8620 T and is optionally available for the 96 series.



Schaffer Dual Clutch Transmission

Benefits:

- Huge level of thrust makes it easy to fill and move a mobile silo
- Most jobs can be carried out in a single operation, taking the strain off the clutch and the gearbox and thereby extending their service life
- Top speed of 40 kph, the best conditions even for usage in different areas of your business
- Fuel economy through increased machine efficiency, reduction in operating costs

SDCT is an available option for the telescopic wheel loaders of the 9600 series.



Eco Mode

Benefits:

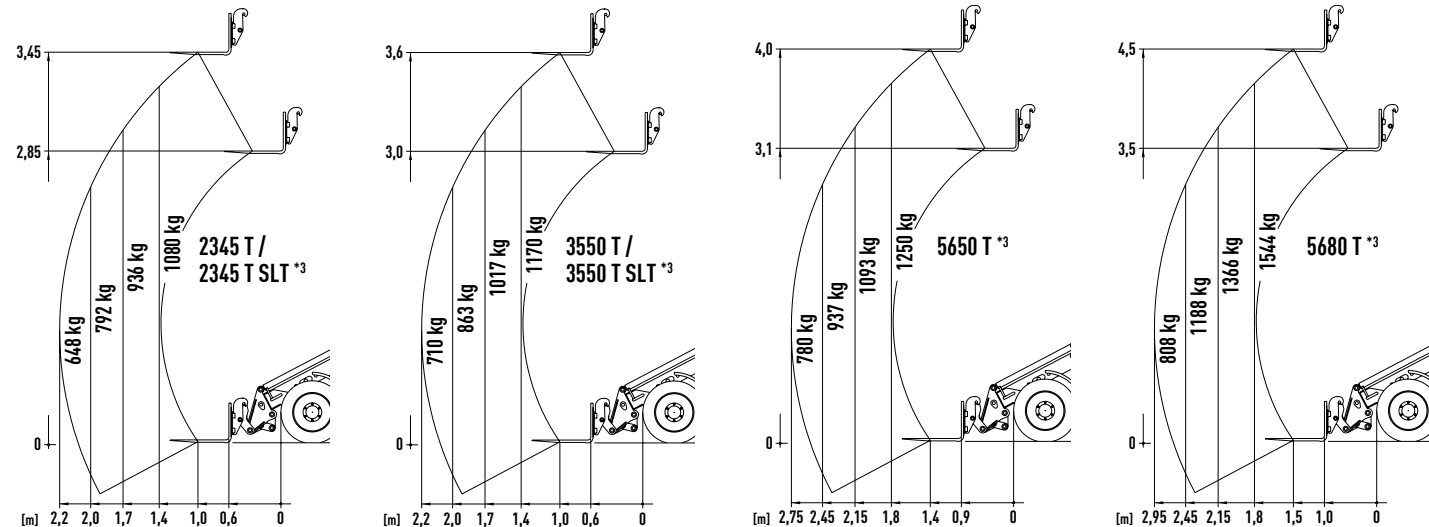
- Fuel saving, reduction in operating costs
- Lower noise level
- Environmentally-friendly operation
- No restrictions on performance

Eco Mode is an available option for the telescopic wheel loaders of the 8600 and 9600 series.

TECHNICAL DATA

	2345 T	2345 T SLT	3550 T	3550 T SLT	5650 T
Engine	4 Cyl. Kubota Turbo, 33 kW (45 HP)	4 Cyl. Kubota Turbo, 33 kW (45 HP)	4 Cyl. Kubota, 37 kW (50 HP)	4 Cyl. Kubota, 37 kW (50 HP)	4 Cyl. Kubota, 37 kW (50 HP)
Traction hydraulics	hydrostatic-automotive, HTF	hydrostatic-automotive	hydrostatic-automotive, HTF (High Traction Force)		
Tyres	10.0/75 - 15.3 AS or MPT Option: 31x15.5-15	10.0/75 - 15.3 AS or MPT Option: 31x15.5-15	15.0/55 - 17 AS Option: 425/55R17	15.0/55 - 17 AS Option: 425/55R17	15.0/55 - 17 AS Option: 425/55 R17
Service braking system	Combined brake hydrostatic and multi-disc brake				
Parking brake	Multi-disc brake running in oil bath				
Working hydraulics Output/pressure	Delivery rate: from 42 l/min Operating pressure: 200 bar	Delivery rate: from 42 l/min Operating pressure: 200 bar	Delivery rate: from 52 l/min Operating pressure: 200 bar	Delivery rate: from 52 l/min Operating pressure: 200 bar	Delivery rate: from 64 l/min Operating pressure: 220 bar
Steering	Fully hydraulic articulated pendulum steering				Fully hydraulic articulated steering
Lifting capacity	1,900 kg	1,900 kg	1,950 kg	1,950 kg	2,400 kg
Tipping load, straight *1	1,650 kg	1,650 kg	1,710 kg	1,710 kg	2,740 kg
Axles	Original Schäffer axles, 6-hole rim; Option: automatic slip-control differential	Original Schäffer axles, 6-hole rim; Option: automatic slip-control differential	Original Schäffer axles, 6-hole rim; Option: automatic slip-control differential	Original Schäffer axles, 6-hole rim; Option: automatic slip-control differential	Original Schäffer axles, 6-hole rim; planetary final drive and automatic slip-control differentials, swing axle at rear
Operating weight	Protective roof: 2,850 kg Cabin: 3,050 kg	Protective roof: 2,900 kg Cabin: 2,975 kg	Protective roof: 3,700 kg Cabin: 3,900 kg	Protective roof: 3,700 kg	Protective roof: 4,250 kg Cabin: 4,450 kg
Speed	0 - 20 kph in 2 gears switchable under load Option: 0 - 28 kph	0 - 20 kph in 2 gears switchable under load	0 - 20 kph in 2 gears switchable under load Option: 0 - 28 kph	0 - 20 kph in 2 gears switchable under load Option: 0 - 28 kph	0 - 20 kph in 2 gears switchable under load
Electric system	Operating voltage: 12 V				
Fill quantities	Fuel: 40 l Hydraulic oil: 30 l	Fuel: 40 l Hydraulic oil: 30 l	Fuel: 55 l Hydraulic oil: 50 l	Fuel: 55 l Hydraulic oil: 50 l	Fuel: 85 l Hydraulic oil: 75 l
Sound pressure level LpA	84 dB(A)	83 dB(A)	85 dB(A)	85 dB(A)	81 dB(A)
Sound power level guaranteed LwA equivalent LwA	101 db(A) 98 db(A)	101 db(A) 98 db(A)	101 db(A) 100 db(A)	101 db(A) 100 db(A)	101 db(A) 101 db(A)
Hand/arm vibration *2	< 2.5 m/s²				
Total body vibration *2	< 0.5 m/s²				

Tyre dimensions and additional equipment can change the operating weight, tipping load and payload.

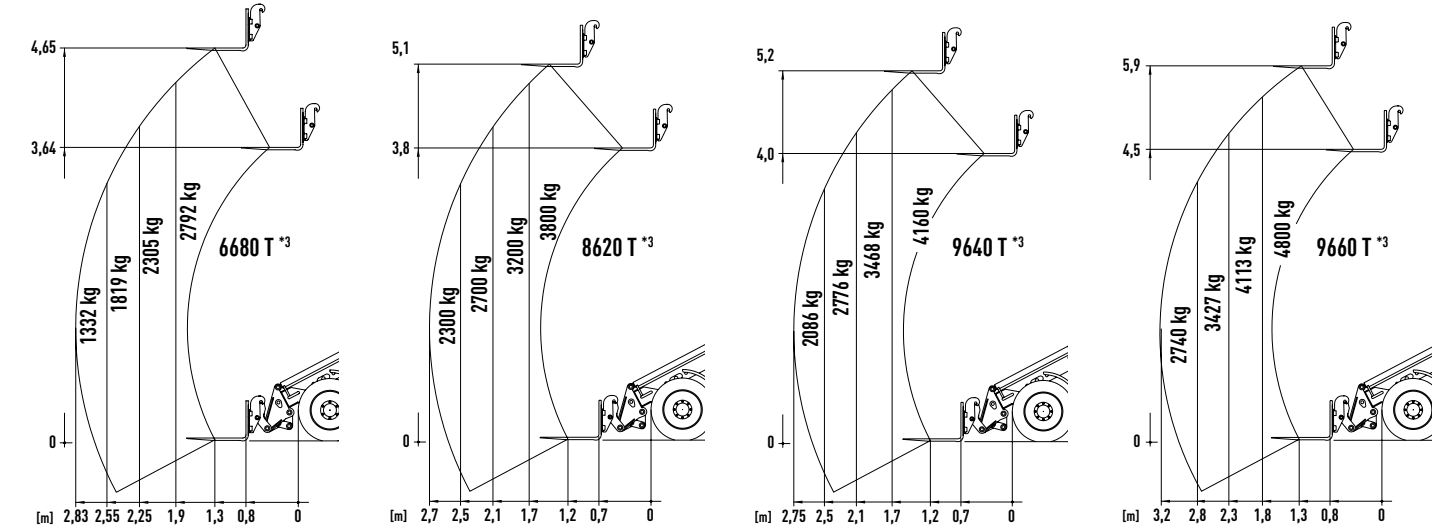


*1 boom horizontal, not extended, with pallet fork (acc. to ISO 14397) *2 according to ISO 8041 *3 using forks on stable underground (according EN 474-3)

All technical specifications in this brochure refer to serial models and describe their standard functions. The equipment components and their functions as well as the accessories depend on the individual model and the product options and also on the country and customer specific requirements (the maximum values for tipping loads and payloads can only be reached with additional ballasting). Images may contain products or equipment components which are not mentioned or cannot be obtained as a standard. The descriptions, measurements, images, weight specifications and technical data correspond to the state of the art at the time of printing and are non-binding. We reserve changes in the field of construction, equipment, optics and technology without prior notice, due to the continuous development of the products. In case of doubts concerning the performance or the mode of operation of our products due to special circumstances, we recommend the execution of work samples under controlled conditions. We cannot exclude deviations from images or measurements, calculation errors, printing errors or incompleteness in the prospectus despite all due care. We do therefore not accept any liability for the correctness and completeness of the specifications in this prospectus. We do guarantee the proper functioning of our products within the scope of our General Terms and Conditions. Any guarantees that go beyond these are on principle not provided. Any liability beyond the ones set out in our General Terms and Conditions is excluded.

	5680 T	6680 T	8620 T	9640 T	9660 T
Engine	4 Cyl. Deutz Common Rail Turbo with Intercooler, 55 kW (75 HP)	4 Cyl. Deutz Common Rail Turbo with Intercooler, 55 kW (75 HP)	4 Cyl. Deutz Common Rail Turbo with Intercooler, 75 kW (102 HP) / 90 kW (122 HP), Tier 4 final	4 Cyl. Deutz Common Rail Turbo with Intercooler, 100 kW (136 HP), Tier 4 final	4 Cyl. Deutz Common Rail Turbo with Intercooler, 115 kW (157 HP), Tier 4 final
Traction hydraulics	hydrostatic-automotive, HTF (High Traction Force)				
Tyres	15.0/55 - 17 AS Option: 425/55 R17	15.5/60-18 AT Option I: 15.5/55-18 Option II: 500/45-20	18-22.5 TL AS Option I: 405/70-20 AS Option II: 500/60/22.5 AS Option III: 600/40-22.5 AS	460/70-24 AS Option I: 500/70-24 Option II: 600/50-26.5 Option III: 700/40-26.5	500/70-24 AS Option I: 600/55-26.5 Option II: 700/50-26.5 Option III: 650/55-26.5
Service braking system	Combined brake hydrostatic and multi-disc brake				
Parking brake	Multi-disc brake running in oil bath				
Working hydraulics Output/pressure	Delivery rate: from 64 l/min Operating pressure: 220 bar	Delivery rate: from 74 l/min Operating pressure: 220 bar	Delivery rate: from 105 l/min Operating pressure: 220 bar	Delivery rate: from 145 l/min Operating pressure: 220 bar	Delivery rate: from 230 l/min Operating pressure: 220 bar
Steering	Fully hydraulic articulated steering				
Lifting capacity	2.400 kg	3.100 kg	4.200 kg	4.200 kg	5.300 kg
Tipping load, straight *1	2.660 kg	3.800 kg	4.640 kg	5.350 kg	7.900 kg
Axles	Original Schäffer axles, 6-hole rim; planetary final drive and automatic slip-control differentials, swing axle at rear	Dana axles, 8-hole rim; planetary final drive and automatic slip-control differential, swing axle at rear	Dana HD axles, 8-hole rim; planetary final drive and automatic slip-control differential, swing axle at rear	ZF HD axles, 10-hole rim; planetary final drive and automatic slip-control differential, swing axle at rear	Dana axles, 10-hole rim; planetary final drive and automatic slip-control differential, swing axle at rear
Operating weight	Protective roof: 4,300 kg Cabin: 4,500 kg	Cabin: 5,600 kg - 6,300 kg	Cabin: 7,050 kg - 7,950 kg	Cabin: 8,400 kg - 9,700 kg	Cabin: 11,000 kg - 13,000 kg
Speed	0 - 20 kph in 2 gears switchable under load Option: 0 - 30 kph	0 - 20 kph in 2 gears switchable under load, Option: 0 - 35 kph	0 - 20 kph in 2 gears switchable under load, Option: 0 - 40 kph	0 - 20 kph in 2 gears switchable under load, Option: 0 - 40 kph	0 - 30 kph in 2 gears switchable under load, Option: 0 - 40 kph
Electric system	Operating voltage: 12 V				
Fill quantities	Fuel: 85 l Hydraulic oil: 75 l	Fuel: 95 l Hydraulic oil: 85 l	Fuel: 115 l Hydraulic oil: 103 l	Fuel: 150 l Hydraulic oil: 130 l	Fuel: 185 l Hydraulic oil: 170 l
Sound pressure level LpA	81 dB(A)	75,5 dB(A)	71 dB(A)	71 dB(A)	78 dB(A)
Sound power level guaranteed LwA equivalent LwA	101 db(A) 101 db(A)	101 db(A) 101 db(A)	102 db(A) 101 db(A)	102 db(A) 102 db(A)	103 db(A) 101 db(A)
Hand/arm vibration *2	< 2.5 m/s²				
Total body vibration *2	< 0.5 m/s²				

Tyre dimensions and additional equipment can change the operating weight, tipping load and payload.



*1 boom horizontal, not extended, with pallet fork (acc. to ISO 14397) *2 according to ISO 8041 *3 using forks on stable underground (according EN 474-3)

DIMENSIONS

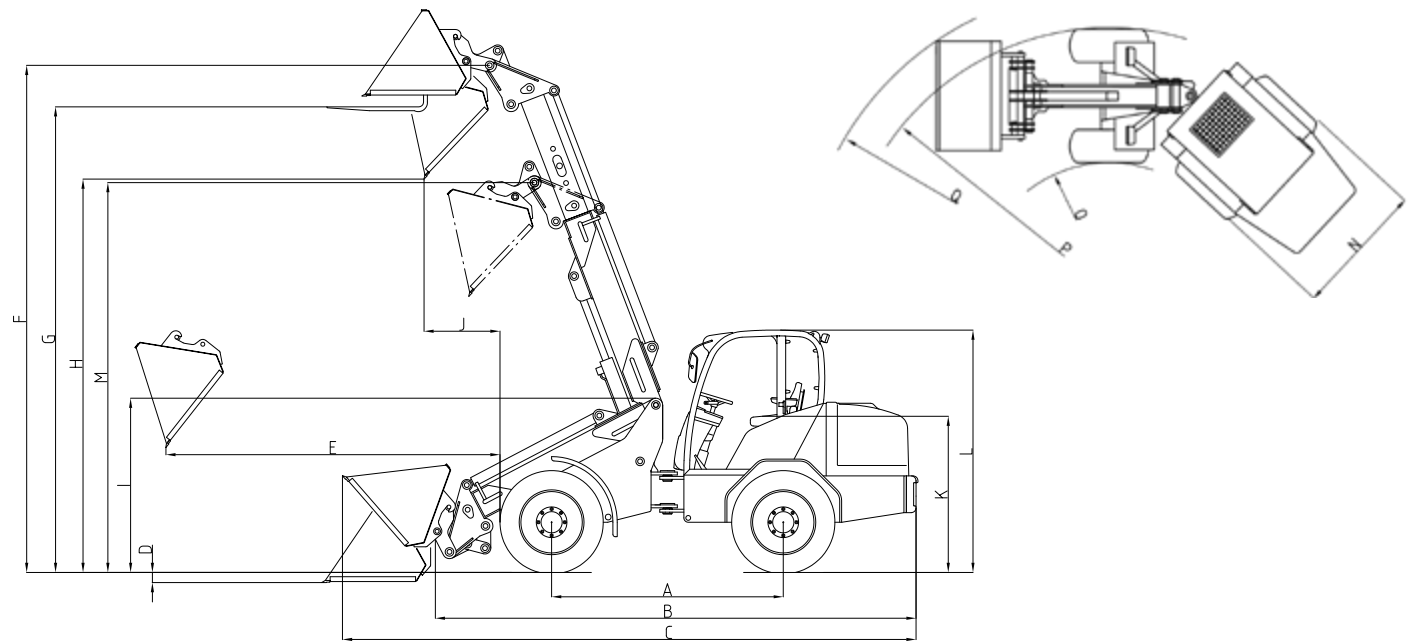
All technical specifications in this brochure refer to serial models and describe their standard functions. The equipment components and their functions as well as the accessories depend on the individual model and the product options and also on the country and customer specific requirements (the maximum values for tipping loads and payloads can only be reached with additional ballasting). Images may contain products or equipment components which are not mentioned or cannot be obtained as a standard. The descriptions, measurements, images, weight specifications and technical data correspond to the state of the art at the time of printing and are non-binding. We reserve changes in the field of construction, equipment, optics and technology without prior notice, due to the continuous development of the products. In case of doubts concerning the performance or the mode of operation of our products due to special circumstances, we recommend the execution of work samples under controlled conditions. We cannot exclude deviations from images or measurements, calculation errors, printing errors or incompleteness in the prospectus despite all due care. We do therefore not accept any liability for the correctness and completeness of the specifications in this prospectus. We do guarantee the proper functioning of our products within the scope of our General Terms and Conditions. Any guarantees that go beyond these are on principle not provided. Any liability beyond the ones set out in our General Terms and Conditions is excluded.

		2345 T	2345 T SLT	3550 T	3550 T SLT	5650 T
A	Wheelbase [mm]	1,850	1,910	1,920	1,920	1,960
B	Chassis length [mm]	3,872	3,932	4,070	4,070	4,350
C	Overall length with standard bucket [mm]	4,520	4,580	4,835	4,835	5,200
D	Digging depth [mm]	90	90	150	150	180
E	Reach [mm]	1,570	1,570	1,780	1,780	2,210
F	Max. bucket pivot point. [mm]	3,750	3,750	3,850	3,850	4,250
G	Loading height with pallet forks [mm]	3,470	3,470	3,580	3,580	4,020
H	Max. dumping height [mm]	3,010	3,010	3,150	3,150	3,330
I	Front end height [mm]	1,580	1,580	1,600	1,600	1,580
J	Dumping width [mm]	820	820	890	890	1,160
K	Seat height [mm]	1,160	955	1,180	1,080	1,290
L	Cab height [mm] Protective roof height [mm]	2,110 2,215	from 1,950 from 1,950	2,270 2,270	- from 2,020	2,440 / 2,320 *1 2,320
M	Swivelling point, telescopic arm retracted [mm]	3,100	3,100	3,180	3,180	3,380
N	Overall width [mm]	1,250 - 1,480	1,250 - 1,480	1,420 - 1,710	1,420 - 1,710	1,420 - 1,710
O	Inner turning radius [mm]	950	980	1,230	1,230	1,480
P	Outer turning radius [mm]	2,550	2,580	2,620	2,620	3,040
Q	Outer radius with standard bucket [mm]	2,850	2,880	2,970	2,970	3,570

*1 Option: low cabin

		5680 T	6680 T	8620 T	9640 T	9660 T
A	Wheelbase [mm]	2,055	2,450	2,535	2,615	2,900
B	Chassis length [mm]	4,689	5,050	5,114	5,452	5,900
C	Overall length with standard bucket [mm]	5,430	5,780	6,031	6,260	6,850
D	Digging depth [mm]	180	100	75	70	80
E	Reach [mm]	2,480	2,360	2,380	2,970	3,300
F	Max. bucket pivot point. [mm]	4,700	4,900	5,200	5,400	6,100
G	Loading height with pallet forks [mm]	4,459	4,650	4,960	5,178	5,900
H	Max. dumping height [mm]	3,822	3,930	4,460	4,574	5,100
I	Front end height [mm]	1,690	1,700	1,910	1,960	2,190
J	Dumping width [mm]	1,003	815	650	740	850
K	Seat height [mm]	1,290	1,420	1,660	1,650	1,880
L	Cab height [mm] Protective roof height [mm]	2,440 / 2,320 *1 2,320	2,530 / 2,430 *1 -	2,770 / 2,670 *1 -	2,860 / 2,760 *1 -	2,970 -
M	Swivelling point, telescopic arm retracted [mm]	3,710	3,900	4,085	4,100	4,800
N	Overall width [mm]	1,420 - 1,710	1,590 - 1,900	2,030 - 2,180	2,330 - 2,380	2,295 - 2,490
O	Inner turning radius [mm]	1,570	1,750	2,240	2,280	2,400
P	Outer turning radius [mm]	3,190	3,360	3,900	3,980	4,200
Q	Outer radius with standard bucket [mm]	3,710	4,000	4,430	4,530	4,650

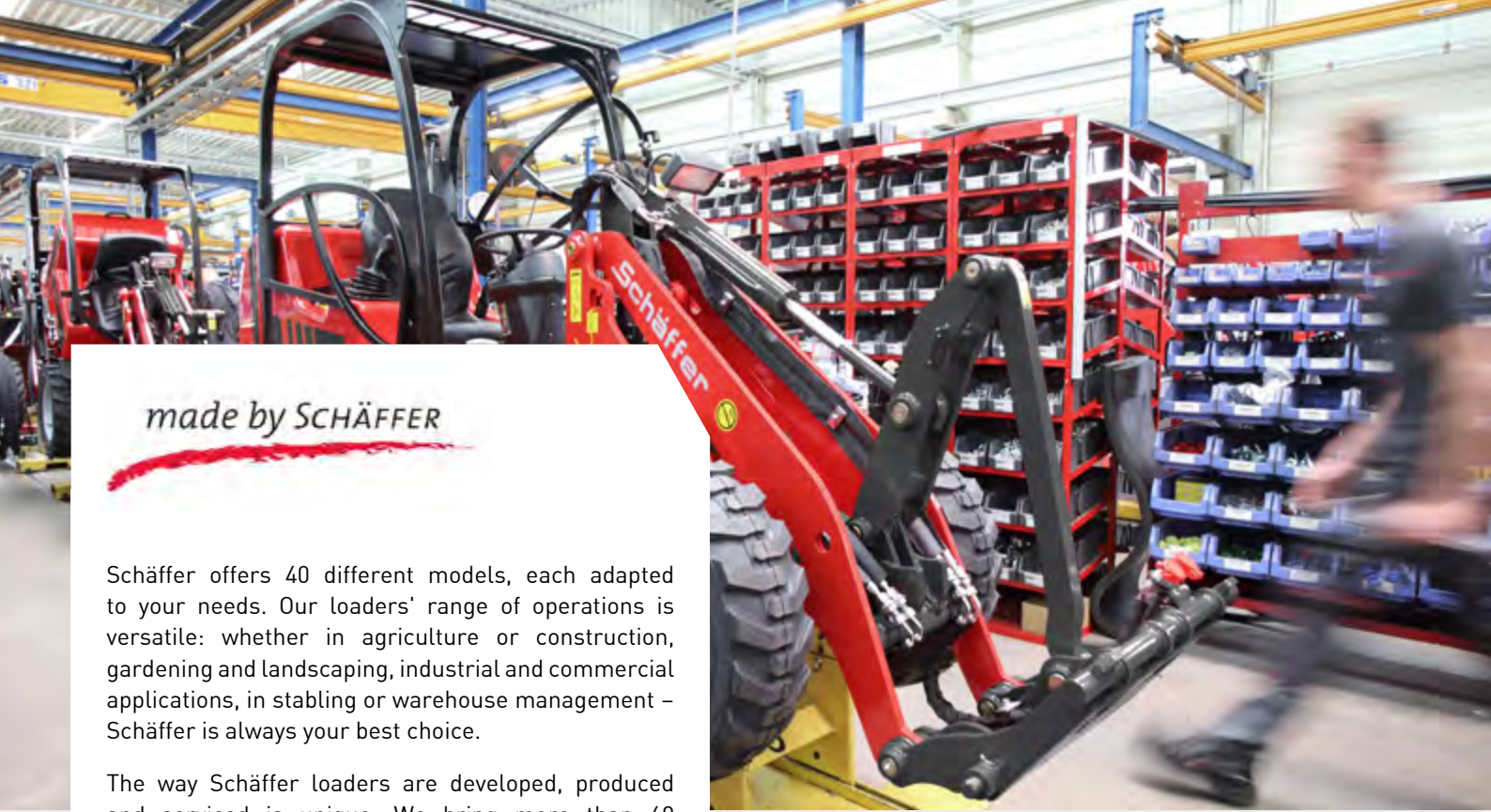
*1 Option: low cabin



Availability of Schaffer efficiency systems

	2345 T	2345 T SLT	3550 T	3550 T SLT	5650 T	5680 T	6680 T	8620 T	9640 T	9660 T
HTF	X	-	X	X	X	X	X	X	X	X
SPT	-	-	X	-	X	-	-	X	O	O
eco Mode	-	-	-	-	-	-	-	O	O	O
SDCT	-	-	-	-	-	-	-	-	O	O

X = as standard, O = optional



made by SCHÄFFER

Schäffer offers 40 different models, each adapted to your needs. Our loaders' range of operations is versatile: whether in agriculture or construction, gardening and landscaping, industrial and commercial applications, in stabling or warehouse management – Schäffer is always your best choice.

The way Schäffer loaders are developed, produced and serviced is unique. We bring more than 60 years' experience, and we always put the end-user first, working to make your job safer, more comfortable and more profitable. Additionally, at our Erwitte location in Germany we use state-of-the-art development and production technologies. Ultimately, it is our employees who continuously develop new solutions, in close contact with the end user. Years of company service together with an enduring spirit form the basis for the special competence and for our global success.

The Schäffer name does not just mean unique product quality. It also stands for safety and the optimal service that we guarantee in Germany, Europe and around the globe.

Purchasing a Schäffer loader is the beginning of a long-term relationship. Your machine will only remain a 100% genuine Schäffer if you use original replacement parts. Only then will it guarantee the reliability you need, and have the right to expect. We offer you and our service partners a 24 hour delivery service – 7 days a week, 365 days a year.



YOUR DEALER:

Schäffer

Schäffer Maschinenfabrik GmbH
Postfach 10 67 | D-59591 Erwitte
fon +49 (0)2943 9709-0
fax +49 (0)2943 9709-50
info@schaeffe-lader.de



WWW.SCHAEFFER.DE/EN

