

**TURF**  **BATWING™**

# TIME TOGETHER EVEN

**EVEN CUT.  
EVEN DISTRIBUTION.  
EVEN COSTS LESS TO OWN.**

Introducing the newly redesigned Estate Turf Batwing®, our 12' triple-deck, rear discharge, flexwing finish mower for large lawns and estates. The Turf Batwing delivers best-in-class\* cut quality at a lower cost of ownership. That's how Woods® helps you Get After It.

**IT'S TIME TO GET EVEN WITH YOUR GRASS.**



FOR COMPACT  
TRACTORS



**TBW12.20**  
TRIPLE-DECK FLEXWING FINISH MOWER



\*THE TURF BATWING INCLUDES THE CUTTING TECHNOLOGY FROM THE #1 RATED TURFKEEPER PRO™, RATED BEST IN CUT QUALITY IN INDEPENDENT TESTING.

For more information visit [woodsequipment.com](http://woodsequipment.com)

**WOODS**  
GET AFTER IT

# TURF BATWING™

WOODS' LATEST INNOVATIVE PRECISION CUTTING TECHNOLOGY BEAUTIFIES YOUR LAWN IN LESS TIME, LEAVING THAT WELL-MANICURED LOOK.

- High-lift blades for best-in-class lifting and cutting of green material for evenness of cut.
- Parallel deck side frames spread material from edge to edge for even material distribution.
- High blade tip speeds enhance productivity with improved mowing at higher speeds for less time on the job.
- Trust the Woods legacy for durable, high-quality cutting equipment for all your mowing needs.



**TBW12.20**

Shown with optional chain shielding, front and rear anti-scalping rollers and light kit.

SPECIFICATIONS	TBW12.20
Tractor PTO (hp)	25-60
Shipping Weight (lbs)	2,005
Hitch	CAT 2 drawbar
Cut Width (in)	144
Cut Height (in)	1.5 - 4.5
Overall Width (in)	147
Max. Overall Length (in)	141
Transport Tongue Wt. (lbs)	384
Transport Width (in)	91
Transport Length (in)	135
Transport Height (in)	71.5
Splitter Gearbox (hp)	100
Deck Gearbox (hp)	30
Blade Tip Speed (fpm)	18,000
Drive Type	Gearbox over v-belt
Input Driveline	CAT 3 (CV)
Wing Drivelines	CAT 3
Transport Tires (in)	(2) 20.5x8-10
Caster Wheels (in)	(10) 8 x 3.5 solid
Trailer Frame Construction	4.0 x 4.0 x .25 sq tube
Deck Thickness (ga)	10
Blade Spindles	(9) ductile iron, lubed-for-life
Blade Overlap (in)	1.25
Blade Dimensions (in)	(6) .25 x 2.5 x 17.0, (3) .25 x 2.5 x 20.8
Hydraulic Remotes Required	(1)

FEATURES	TBW12.20
Hitch Adjustment	Floating clevis, multi-position
Transport Lock	Automatic, manual release
Transport Tires	Low-speed
Belt Construction	B-section, Kevlar®
Belt Cover	Clutching cover
Blade Spindle	Sealed, ball bearing
Rear Chain Shielding	Optional
Blade Options	Low, high lift
Light Kit	Optional
Hydraulic Wing Unlock	Optional
Gearbox Warranty	3-year
Mower Warranty	1-year
Spindle Warranty	1-year



### TRANSPORT LOCK QUICK RELEASE

Easily pull the rope to release transport lock.



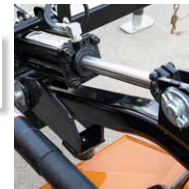
### 3-YEAR GEARBOX WARRANTY

Confidence in the durability of your Woods mower.



### 1-YEAR SPINDLE WARRANTY

Ductile iron blade spindles are lubed-for-life.



### HYDRAULIC CYLINDERS

Rugged, single-acting hydraulic cylinders fold the mower for transport.



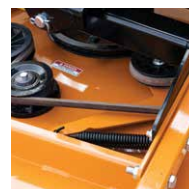
### EASY SHIELD REMOVAL

No tools needed to access belt sheaves, belt or spring-loaded idler.



### CAST-IRON SHEAVES

Better belt grip for extended belt life.



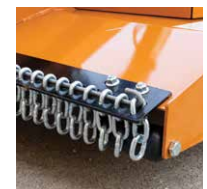
### SPRING-LOADED BELT TENSOR

Replaceable idler post and bronze bushing.



### OPTIONAL FRONT AND REAR ROLLERS

Anti-scalp protection for uneven terrain.



### OPTIONAL CHAIN SHIELDING

Added protection to further reduce the risk of thrown objects.



FOR COMPACT TRACTORS



**TBW12.20**

Shown in transport mode.

WOODS® | Woods Equipment Company  
2606 South Illinois Route 2, Oregon, Illinois 61061 tel 800-319-6637 [woodsequipment.com](http://woodsequipment.com)

**WARNING!** Some images may show safety shields removed to provide a better view. Equipment should never be operated with any safety shield removed. Some machines in this brochure may be shown with optional equipment. Always operate machines in accordance with supplied operator's manuals. ©2022 Woods Equipment Company. All rights reserved. WOODS, Woods logo, and Turf Batwing logo are trademarks of Woods Equipment Company. All other trademarks, trade names, or service marks not owned by Woods Equipment Company that appear in this brochure are the property of their respective companies or mark holders. Specifications subject to change without notice.

B102101 August 2022

**WOODS**  
GET AFTER IT