

MARLON

XPLORE PRO III

2024-2025 Marlon Xplore Pro Decks

We are entering the Next Generation in Truck Decks!



www.marlonproducts.com

Now Get Out and Xplore like a Pro!



2024 Winter

Xplore II Aluminum Truck Deck Dealer Pricing & Program

Minimum Quantity to Qualify as a dealer - 4 (units can mix models)

Nov. 30th Flooring

Qualifying dealers will be listed on Marlons website.

Payment / Terms / Financing:

2% cash discount for payment at time of Delivery

Net 30 Days or

Huntington or Northpoint

Winter Deck Check Special

Snowcheck Orders Must be placed by MAR. 20th, 2024 to receive dating and discounts.

Dealer Minimum 4 Decks, Nov. 30th 2024 Dating

Book 6 Decks, receive Dec. 31st 2024 Dating

Paint Special deduct \$100 off each sled deck and a discount of 3% off of dealer net costs

Book 12 Decks, receive Jan. 31st 2025 Dating

Paint Special deduct \$100 off each sled deck and a discount of 5% off of dealer net costs

Book 18 Decks, receive Jan. 31st 2025 Dating

Paint Special deduct \$100 off each sled deck and a discount of 7% off of dealer net costs

**Deck Check Orders Must be placed by MAR. 20th, 2024 to
ensure product availability.**

All booking orders to be delivered in full by October 2024.

www.marlonproducts.com

Agassiz, BC – Stony Plain, AB – St. Andrews, MB - Spanaway, WA - Madera, CA

MARLON

XPLORE PRO III

PRO III

We would kindly ask that the information contained in this program stays within the dealer network, providing time for Pro II's to be sold. We would like to hit the market hard, just before and on launch date with your dealerships help through our new website (coming soon) Social Media and our Ambassadors.

The **Marlon Pro III** design goal was to take the industry leading sled deck, make it better and continue to lead the industry!

Project Code Name - Maverick started in late 2021

Questionnaire Feedback - Dealer, Ambassador and Customer feedback April 2022.

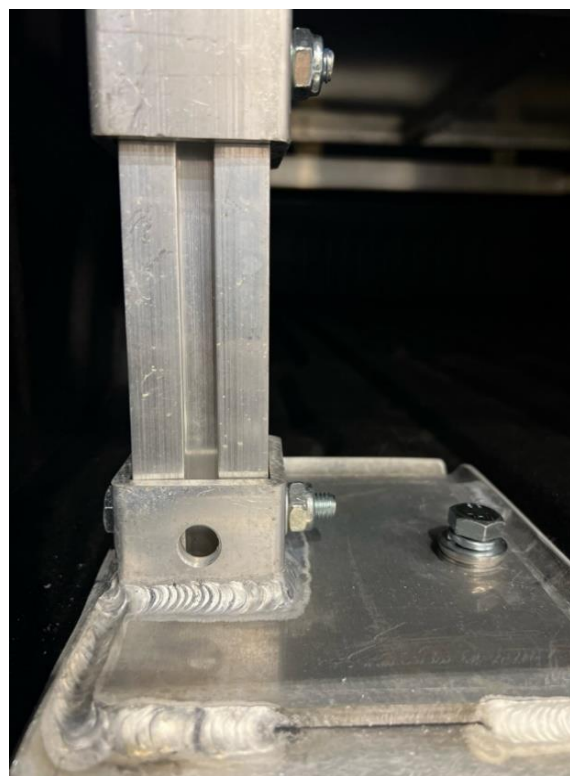
Design development and testing - daily!

More changes coming - Yes we will continue to develop, improve our strong deck design.

Launch Date - September 7th 2024 at "Hay Days" Teasers will start in August before Hay Days unveiling!

Below are the results of our customer feedback, hard work, trial and error in design and testing. We will continue to lead the way with the new Marlon Pro III Sled Deck.

Adjustable legs - a heavy duty extrusion has been developed to allow each leg to be adjusted to the proper height easily. More to come, on how installation has been made much quicker and easier. All legs are the same lefts, rights, fronts backs, short box or long box decks same legs no confusion easier assembly and installation.



MARLON

XPLORE PRO III

New Foot Pads - shims have been eliminated due to fully adjustable legs. Foot pads can be turned to fit into all existing truck beds without cutting or trimming to fit around fuel lines or wheel wells. Installation time saver!



Seal Kit - We have taken our proven frame extrusion that allows you to move the legs to fit a short or long box and gave it a tweak to hold the side seal! Doing this has eliminated the aluminum plate needed to hold the rubber seal and cleaned up the look of the deck. This makes it much easier to slide the legs forward or back without the aluminum seal kit in between. Seal kit is now a standard feature nice finish and looks cool!



MARLON

XPLORE PRO III

Marlon Name Plates - we are using aluminum Marlon name plates on the sides and headache rack eliminating decals. We have also painted them textured black to contrast with the gloss black adding appeal to the look of the deck. This makes them easier to remove when wrapping the deck sides and the white backing plate can be removed and painted by the consumer to match their sled color or truck if desired.



MARLON

XPLORE PRO III

Deck Center Extrusion - Just got beefier! Now comes up through the center and provides a track to tie down bikes, pallets, and new accessories we are working on! Lets face it the decks are great for hauling everything and we now have another row of tie downs up the center of the deck.



White - We are making powder coated white available only at booking time. we have been asked by many customers in the past year for a white deck so we are making white avaiabe at booking only.

HDPE Decking - we have gone to HDPE decking material (not as shown) this will provide a cosistant great look protection and durability.

MARLON

XPLORE PRO III

Pull Out Side Improvements - Where do we start? The goal was to make it easier to pull them out, adjustable, and be able to be set at Mountain Sled width or fully out at Trail sled width and we accomplished all challenges! We used the same proven deck extrusion with UHMW embedded so aluminum on aluminum friction is eliminated. But we changed the slide out side to use a round aluminum pipe to reduce the contact surface further. A further step was taken to reduce friction by powder coating the round pipe increasing the ability to slide.



Pull Out Side Improvements continued - We know that the side arms can tweak slightly due to heat when welding and the welds have to be dead on straight and located accurately. We decided to provide an allowance and adjustability to the arms by bolting them in and providing adjustability to ensure we have the easiest slide out sides in the industry.

Two position slide out - the sides can now pull out to a narrow position for mountain sleds and pinned or fully out for trail machines. There is a stopper bolt that can be set under the deck for the required width position. If set to the narrow pull out position for mountain sleds the side will only pull out that far.

Superclamps - we worked with Superclamp in 2022 to develop a front clamp that could be cut to shorten it for use on our decks that have the sides in the narrow position for mountain machines. Clamp and pad can be removed and cut at the cut line provided.

Double front clamp hook - we have designed a new double tie down hook for the front superclamp. This will allow you to use the deck in the wide or narrow position without having to move the tie down hook.

Rear Superclamp - extrusion come mounted on the rear of both sides of the deck and the deck extension.

MARLON

XPLORE PRO III

Embedded Under Deck Lights - the same center extrusion mentioned above has some under deck improvements. A channel up the center will allow the under deck lights to be embedded so they are not hit by the loading ramp while being put in or taken out.



Aluminum Plate - an aluminum plate now covers the deck framework running from the new center extrusion to the outside of the deck welded in adding strength and sealing out the water! This makes our deck that much more water resistant! Shown in above picture above deck frame.

That's not it!

There are more features and WOW factors that will light up the industry when the Marlon Pro III Sled Deck is officially launched Sept. 7th 2024 at Hay Days in North Branch, MN!



2024-2025 Marlon Sled & ATV Truck Decks
Smart, Safe and Secure

Xplore Pro III Sled and Xplore Pro III ATV

Pro III has so many new features we had to put most of them in the following pages!

2024 Pro III Decks are available in **White only on booking orders!**

Xplore Pro III Sled Deck

Model	Dealer US		Dealer Cdn
8' Truck Deck (Fits 6.2'-8' Truck Box)			
:270-0186-SLED c/w 10' Telescoping Ramp	\$4,409		\$5,953
:270-0189-SLED c/w 12' Telescoping Ramp	\$4,658		\$6,289
7' Truck Deck (Fits 5.5' - 6.5' Truck Box)			
:270-0187-SLED c/w 10' Telescoping Ramp -5.5' box requires a 8.5' ramp	\$4,297		\$5,800
:270-0190-SLED c/w 8.5' Telescoping Ramp -5.5' box requires a 8.5' ramp	\$4,315		\$5,825

Sled Deck comes with all of the standard features listed below plus two front and rear Superclamps.

Two Rear Superclamps c/w supertrac and deck hook Tie Down Hooks

Xplore Pro III ATV Deck

Model	Dealer US		Dealer Cdn
8' Truck Deck (fits 6.2' -8' truck Box)			
:270-0186-ATV c/w 10' Telescoping Ramp	\$4,024		\$5,433
:270-0189-ATV c/w 12' Telescoping Ramp	\$4,273		\$5,769
7' Truck Deck (fits 5.5' - 6.5' truck Box)			
:270-0187-ATV c/w 10' Telescoping Ramp -5.5' box requires a 8.5' ramp	\$3,911		\$5,280
:270-0190-ATV c/w 8.5' Telescoping Ramp -5.5' box requires a 8.5' ramp	\$3,929		\$5,305

No Superclamps are included in the above ATV Decks.

All decks come standard with the following

LED Light in rear loading bar, brake, signals and reverse lights

New HDPE decking

Tie Down tracks on outer sides c/w 4 hooks for securement purposes

New Center Deck Tie Down Extrusion

LED bullet lights in the headache rack

New Marlon Aluminum Name Plates - consumer can color matched to their truck or sled

Telescoping ramp 10' long x 55" wide

Powder Coated Black **White available only at booking** PERIOD.

Weather Seal Kit

LED bullet lighting on deck sides

LED bullet lighting protected in **new under deck extrusion**

New Fully Adjustable legs

UHMW and custom extrusion for easier slide in sides

New adjustable side tube powder coated for easier side slides

UHMW on ramp tray

Hardware kit for installation into truck box

8' Truck Deck

Overall length 108"
Deck length 96"
Width extended 102"
Width retracted 75"
Weight 469 lbs

7' Truck Deck

Overall length 92"
Deck length 85.5"
Width extended 102"
Width retracted 75"
Weight 411 lbs

2024-2025 Xplore SL Single Loading Deck - Storage Tray

Smart, Safe and Secure

Model	Dealer US		Dealer Cdn
270-0118 Single Loader - Storage Tray	\$799		\$1,079
270-0181 Single Loader Mountain Sled Edition	\$799		\$1,079

Single Loader Features

Easy one person loading
 Cantilever design allows one hand lifting
 Positive tailgate stop for safe and secure loading
 Heavy Duty casters
 Superglides
 Ramp rung protectors
Universal fit 1/2 ton to 1 ton trucks
120" long 48" wide 6" high, weighs 78 lbs
 Adjustable tailgate supports

Mountain Edition

Easy one person loading
 Cantilever design allows one hand lifting
 Positive tailgate stop for safe and secure loading
 Heavy Duty casters
 Superglides
 Ramp rung protectors
 Universal fit **1/4 ton, 1/2 ton to 1 ton trucks**
 120" long **42" wide** 6" high, weighs 71 lbs
 Adjustable tailgate supports

When not in use it can be used as a display tray in your showroom or as a storage tray to easily move your sled around your shop or garage when not in use.



New Mountain Edition shown in a Toyota Tacoma



Description	Dealer US	Dealer Cdn
Paint Finish - Black standard - White available at booking time only.		
Delete Gloss black powder coat paint on sides and headache rack	-\$200	-\$270
Deck Extension LED running and signal light built into loading bar		
270-0188 Pro III extension painted black, or white only in booking period HDPE decking, LED light bar c/w 2 x 10" of track on each side for rear superclamps	\$593	\$801
Weather Seal Kit FOR PRO II DECKS ONLY - INCLUDED IN PRO III DECKS - Blocks snow from blowing in under your deck		
:320-0081 KIT Xplore under deck water and snow seal for 7' deck	\$118	\$160
:320-0082 KIT Xplore under deck water and snow seal for 8' deck	\$132	\$178
(requires 300-0055 headache rack if deck is previous to 2022 model)		
Ramps Hands - New in 2022 ramps hands hold your ramp to assist in hooking and unhooking your ramp to and from the loading bar		
320-0083 Xplore Ramp hands kit	\$30	\$41
Ramps Xplore II Ramp c/w New 12" wide Ramp Rung Protectors		
:350-0027 KIT 12' Ramp upgrade exchange (longbox trucks only)	\$249	\$336
:350-0028 KIT 8.5' Ramp exchange (required for super short boxes 5.5')	\$18	\$25
350-0030 Ramp extension adds 24" to the length of your ramp	\$271	\$366
Spare Ramps Xplore II Ramp Design with wide glides & ramp rung protectors		
:350-0026 KIT 10' Telescopic Ramp c/w wide glides, ramp rung protectors	\$697	\$940
:350-0027 KIT 12' Telescopic Ramp c/w wide glides, ramp rung protectors	\$870	\$1,174
:350-0028 KIT 8.5' Telescopic Ramp c/w wide glides, ramp rung protectors	\$664	\$897
Putco Lights - Wiring Harness Adapters For Various Truck Models		
205--0026 For Ford Super Duty 2017-2019 Putco#529006	\$52	\$70
205--0029 For many other applications with 7 pin Putco#529004 see Putco flyer	\$57	\$76
205--0030 For 2019+ GM Silverado/Sierra 1500+ HD trucks Putco#529005	\$51	\$69
205-0034 For 2021+ Ford Super Duty Trucks Putco#529014	\$135	\$182
205-0058 F-350 Wire Harness 2023 LED's/OBS	\$216	\$291
205-0059 GMC Wire Harness 2024+	\$213	\$288
205-0060 F-350 Halo Lights Mid-Low	\$103	\$139
Truck Deck Racks		
300-0024 Truck Deck Racks 500 lbs carrying capacity, painted steel	\$299	\$404
Aluminum Decking to change out existing decks to Aluminum Flooring does not include labor		
227-0012 Aluminum Deck for 8' decks	\$804	\$1,085
227-0015 Aluminum Deck for 7'	\$726	\$980
227-0019 Aluminum Deck for 8' decks 2"s longer with rear angle starting in model year 2020	\$804	\$1,085
Headache Racks		
300-0055-BL Headache rack "M" style for rear camera and rubber slide for weather snow seal headache rack c/w 2022+ decks	\$137	\$185
Deck Leveling Pad (Leg risers are for PRO II decks) Not required for PRO III decks 2024-2025+		
320-0021 Provides larger support base plate and allows the leg to be adjusted up for various truck depths - sold individually for each leg for PRO II Decks Not required with Pro III decks	\$25	\$34
Supertrac		
229-0011 7' Supertrac (1 piece)	\$44.83	\$61
229-0012 8' Supertrac (1 piece)	\$51.24	\$69
Marlon Cross Bar Protector		
320-0033 Ramp cross bar protector with traction bulk - 1 piece c/w 3 screws	\$2.62	\$4
320-0034 Ramp cross bar protector with traction kit - 24 piece c/w 72 screws	\$62.94	\$85



Xplore Pro III Options
Smart, Safe and Secure

ALL ITEMS BELOW IN CANADIAN FUNDS	Dealer Cdn
SuperClamps	
320-0026 Rear Superclamps c/w 12" supertrac	\$114
320-0028 Additonal front superclamps	\$156
229-0015 Additional supertrac tie down hook	\$9.91
229-0002 Additional superclamp deck hooks	\$9.69
SuperGlides	
320-0035 SuperGlides II Pro w/screws (8 pieces or 20' enough for one sled on 10' deck or trailer)	\$91
320-0036 SuperGlides II Pro WIDE (13.5" wide) w/screws 8 pieces or 20', enough for one sled on 10' deck or trailer)	\$121
320-0020 Superglide extrusion kit holds glides in place (above kit includes 4 x 10' extrusions and rivets matches 1 box of superglides for one side or sled)	\$58
Superglide deck kit <i>installation</i> , standard deck	\$100

2025-2024 SXS & ATV RISER

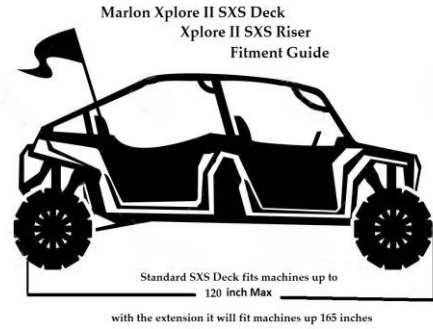
SMART, SAFE & SECURE

Model	Dealer US		Dealer Cdn
270-0168 Xplore II SxS & ATV Riser	\$1,359		\$1,835
Xplore Risers come standard with 4 tire tie down's and ramp traction grips.			
Ramps			
Note 2019 onward sled decks are equipped with a new ramp that includes wide superglides allowing machines up to 50" wide to load.			
For machines wider than 50" choose from the following ramp options			
350-0032 Xplore II 10' SxS & ATV Riser Single Ramp	\$492	Pair	\$665
350-0033 Xplore II 12' SxS & ATV Riser Single Ramp	\$596	Pair	\$804
Ramps sold in pairs.			
Options			
270-0171 Xplore II SxS & ATV riser extension	\$687		\$928
For machines longer than 120" up to 165"			
Xplore Risers come standard with 4 tire tie down's and ramp traction grips.			

OPTIONS - INCLUDED ABOVE

Note below options are included with Marlon Riser - We are providing these items priced separately for those who may need them in the future.

Model	Dealer US		Dealer Cdn
320-0046 Additional tire tie down c/w 4 straps & ratchets only	\$34		\$46



XPLORE RISER SHOWN WITH EXTENSION



Pricing in US Funds

www.marlonproducts.com

FOB Marlon Warehouses
Agassiz, BC - Stony Plain, AB,
St. Andrews, MB - Spanaway, WA -
Madera, CA

Deck Order Sheet

		Finish		
		Brushed		Black
		Total Qty		
		Sled/ATV	Sled/ATV	Sled/ATV
Model	8' Deck	/	/	/
	TRUCK DECK fits 6.2' - 8' Truck Box			
Ramp	10'		STD	STD
	12'			
Model	7' Deck	/	/	/
	TRUCK DECK fits 5.5' - 6'.5" truck Box			
Ramp	8.5'			
	10'		STD	STD
	12'		N/A	N/A
Model	Xplore SL Single Loader			
Model	Xplore Deck Riser			
Model	Xplore SXS Deck			

Options

Deck Extension

24" Rear Extension - Aluminum Decking

Total Qty

/		
---	--	--

Ramp Extension

24" Sled Deck Ramp Extension

/		
---	--	--

Side By Side Ramps for Riser

350-00032 Xplore II 10' SxS & ATV Riser Single Ramp

350-00033 Xplore II 12' SxS & ATV Riser Single Ramp

Additional Superclamp Accessories

Note each Marlon Xplore Pro Sled Deck comes with 2 front and rear Superclamps, with many features please refer to the brochure or price page.

QTY

SuperClamps	
Rear Superclamps c/w Supertrac	
Additional Front Superclamps	
Additional Deck hooks	
Additional Accessories as shown on price page	

Dealer Name _____

Address _____

TCF Dealer Number _____

Northpoint Dealer Number _____

PO#/Signature _____

MARLON

XPLORE PRO III

MARLON TRUCK DECK FIT GUIDE

FORD	ATDK-08 (6.2'-8')	ATDK-07 (5.5'-7')	8.5' RAMP	10' RAMP	12' RAMP	2' DECK EXTENSION
F350/F250						
8'	Y	N	Y	Y	Y	Y
7'	Y	Y	Y	Y	N	Y
6.5'	N	Y	Y	Y	N	Y
5.5'	N	Y	Y	N	N	Y
GMC/CHEVY						
3500/2500						
8'	Y	N	Y	Y	Y	Y
6.5'	N	Y	Y	Y	N	Y
5.8'	N	Y	Y	N	N	Y
GM1500						
8'	Y	N	Y	Y	Y	Y
6.5'	N	Y	Y	Y	N	Y
5.8'	N	N	Y	N	N	Y
DODGE						
3500/2500						
8'	Y	N	Y	Y	Y	Y
6.6'	N	Y	Y	Y	N	Y
5.6'	N	Y	Y	N	N	Y
DODGE1500						
8'	Y	N	Y	Y	Y	Y
6.6'	N	Y	Y	Y	N	Y
5.5'	N	Y	Y	N	N	Y
TOYOTA						
8'	Y	N	Y	Y	Y	Y
6.6'	N	Y	Y	Y	N	Y
5.6'	N	Y	Y	N	N	Y
NISSAN						
8'	Y	N	Y	Y	Y	Y
6.6'	Y	Y	Y	Y	N	Y
5.6'	N	Y	Y	N	N	Y

It is up to the dealer and consumer to make sure of the GVWR of the truck that they are installing the deck into and what they are loading to ensure that they remain within the truck manufacturers ratings and the legal limits for there area.