



8100 - 9100 BOSS RT SERIES Truck & Trailer Mounts

Industrial Rear Unload Box "LIVE BOTTOM"



FAST - STABLE - SAFE

*Unloading of your Materials. Any operator can unload this box.
Turn It On, Turn It Off. It's That Simple.*

9136 w/XTSW4500



9130 w/ HFX2800



8124 BOSS RT



*See our Full Line of Ag Trailers / Cart & Wagon Mounts / Truck Mounts
Feed • Seed • Fertilizer Applications*

MEMBER



Farm Equipment Buyers Trust The Name Meyer!



MEYER 8100 BOSS RT SERIES

TRUCK • TANDEM TRAILER • WAGON MOUNTS AVAILABLE

8124 BOSS RT
w/ optional grain kit & poly fender pkg



8100 RT

18' - 26' MODELS
**HYDRAULIC
GEARDRIVE** STANDARD
Fast • Simple • Trouble Free



Advanced
Geardrive
Technology

Fully Welded Frame - No Bolts

This frame is designed to carry heavy loads day after day.

- 16" Centers on Tubular uprights
- 16" Centers on Tubular Floor Supports
- 16" Centers on Channel Cross Members
- The welded construction will not bow or bend and is a perfect fit for truck & trailer frames. You won't see the flexing and twisting associated with competitive boxes.



40 SECOND UNLOADING

All models below unload in 40 seconds (with proper hydraulics). Our system is more stable, the load stays low and moves fast!

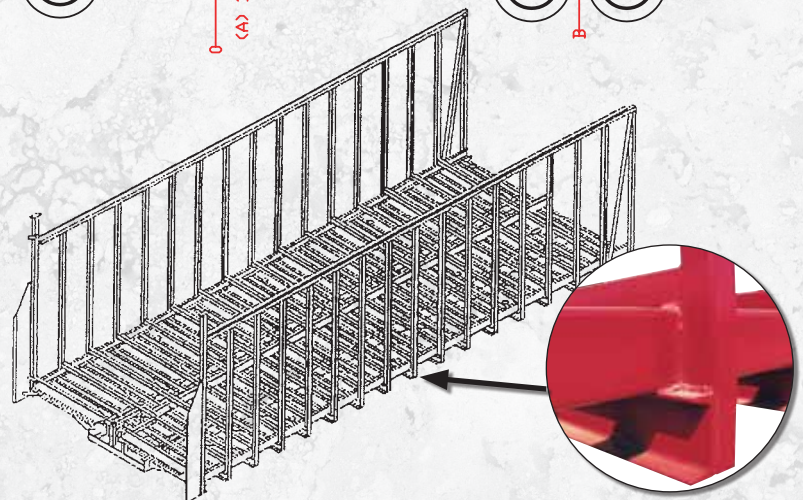
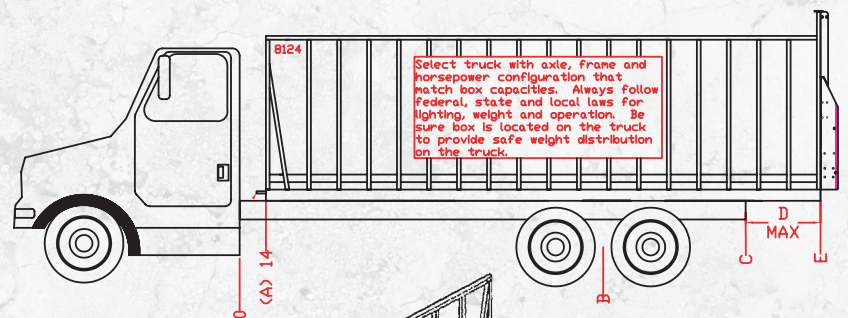
TRUCK MOUNT SPECIFICATIONS

8100 RT Series Hydraulic Requirements (except 8126)

- 25 GPM @ 3,000 PSI Peak Pressure
- Truck Engine RPM @1,500
- Relief Valve @ 3,000 PSI
- 30 Gallon Reservoir
- 3/4" NPT Hydraulic Connections

8100 Series Frame Length Requirements

Size	A	B	C	D	E
8118	14"	152"	192"	38"	230"
8120	14"	167"	216"	38"	254"
8122	14"	182"	240"	38"	278"
8124	14"	194"	270"	38"	310"



INDUSTRIAL SERIES BOSS RT GEARDRIVE



BUNKERS OR BAGS • "THE BOSS" FILLS THEM FAST • HANDLES GRAIN TOO!!

B

SS
RT

Fold-down Front Extension
 Ideal when opening fields!
 Standard: 9100 Series
 Optional: 8100 Series
 Non Tarp Units only.



★ **FEATURES ON BOTH 8100 RT AND 9100 RT MODELS** ★

Standard Top Pivot Door



Gate Delay System Advantage

- Cut Unloading Time!!
- Holds gate open until load completely exits box.
- Positive Door Latches
- No operator assistance
- New design requires no adjustment!



Barn Door Advantage

- Ideal for Big Baggers
- Locks into chains for travel, requires air or hydraulics for closure
- Now Available with Grain Kit



Optional Center Opening Doors



BOX CONSTRUCTION:

Unlike our competitors unibody designs which rely on their side sheeting for strength, the Meyer "BOSS" has a massive steel frame. This adds years of life to your live floor and eliminates the stress cracking with other brands.

- 8100 models - feature Clad-Tuff Fiberglass Woven Side Panels
- 9100 models - feature Stainless Steel Side Panels
- 8100 & 9100 models - both feature a solid, virgin poly floor to eliminate delamination



The heart of the BOSS RT design is its **massive RT Geardrive** & 2-3/8" Drive Shaft. This Meyer feature is a industry exclusive offering you:

- Less maintenance (NO Roller Chains).
- Faster unload times
- Smooth, quiet operation
- 8100's feature a single drives, 8126 and 9100 models feature a dual drive system.



Massive 667XH Aprons Standard 30,000##+ tensile per strand. 120,000##+ total Chain Strength! Also provides better sprocket wrap than other chain.



Easy Serviceability

- Direct Hydraulic Geardrive
- 5 grease zerks on the entire box!

MEYER 9100 BOSS RT

SEMI-TRAILERS • STRAIGHT TRUCK MODELS • AG CARTS

9100 RT

SEMI TRAILERS

30 - 36 - 40'

STRAIGHT TRUCKS

24 - 30'

AG CARTS

30-36'



9126 BOSS RT



Enclosed Fully Welded Frame for added Strength (9100 only) Meyer 9100 Trailers are one of few that have an I-Beam Frame to handle the stresses from the axles, jacks and 5 wheel. It's just plain stronger than the rest. Meyer maintains a low center of gravity thanks to its double frame design over the 5th wheel area.

Adjustable bumper, push plate & rear tow hooks on trailer with standard spring ride axle set.

9100RT Series Difference

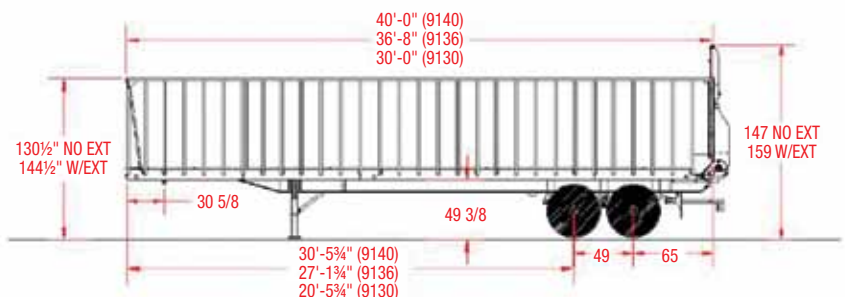
Same features as the 8100RT plus:

- Stainless Steel Sides
- Dual Hydraulic Geardrive (drives off both sides)
- Reinforced, enclosed side frames
- Rear Gate Delay System Standard – new design requires no adjustment
- Marker lights & DOT reflective tape
- 1" hydraulic lines and JIC connections on semi trailers
- Lengths up to 40'

All standard equipment on 9100RT

9100 Series and 8126 Hydraulic Requirements:

- 40 GPM @ 3,500 PSI Peak Pressure
- Truck Engine RPM @1,500
- Relief Valve @ 3,500
- 40 Gallon Reservoir
- 1-5/16" - 12 JIC Male Connections



Physical Specs

Capacity: 80,000# GVW

Empty Weight: 17,200# (9136 est.)

Tire Size: 425/65R x 22.5

Aluminum 10-Hole Disc Wheels (Opt.)

8100 & 9100 BOSS RT OPTIONAL FEATURES

Grain Hopper Kit (patented)



The Meyer Grain Kit is easy to install, it unloads fast and it **doesn't leak!** (no tools needed to remove or install top pivot)

Tandem Trailers Suitable for Boxes from 18'-26'



XT 2200 Oscillating Beam Trailer

For close hauls, muddy conditions, balanced load.



XTS & HFX Suspension Axle Trailer
XTSS Suspension Axle / Steerable Trailer

GRAIN KIT NOW AVAILABLE

for Top pivot (pictured above)
or Barn Door Applications



PERSONALIZED FARM NAME

- NO CHARGE -

(Name on Sides of Boss Models Only)

Pictured with optional set back axles and eyebrow fender sets



Side-to-Side Electric Roll Tarps

MULTI-USE TARP SYSTEMS

Front to Rear Electric Scissor Tarps



Also available: **Commercial RTX200** and **8200** front & rear unload and **RTX600** front unload.

MEYER HAS THE FEATURES YOU NEED!



DIMENSIONS • SPECIFICATIONS • OPTIONS

DIMENSIONS	8118RT	8120RT	8122RT	8124RT	8126RT	9124RT	9126RT	9128RT	9130RT	9130RT Trailer	9136RT Trailer	9140RT Trailer
Inside Length	18'	19'4"	22'	24'8"	26'	24'8"	26'	28'8"	30'	30'	36'8"	40'
Inside Width	97"	97"	97"	97"	97"	98"	98"	98"	98"	98"	98"	98"
Inside Height - no extension	72"	72"	72"	72"	72"	72"	72"	72"	72"	72"	72"	72"
Inside Height w/14" extension	85.5"	85.5"	85.5"	85.5"	85.5"	85.5"	85.5"	85.5"	85.5"	85.5"	85.5"	85.5"
Overall Length	19'1"	21'1"	23'1"	25'9"	27'1"	25'9"	27'1"	29'9"	31'1"	31'1"	37'9"	42'1"
Overall Width	102"	102"	102"	102"	102"	102"	102"	102"	102"	102"	102"	102"
Overall Height - no extension (top of gate)	103.5"	103.5"	103.5"	103.5"	103.5"	103.5"	103.5"	103.5"	103.5"	147"	147"	147"
Overall Height w/14" extension (top of gate)	115.5"	115.5"	115.5"	115.5"	115.5"	115.5"	115.5"	115.5"	115.5"	159"	159"	159"
Overall Side Height - no ext. / ext.	88.25/102"	88.25/102"	88.25/102"	88.25/102"	88.25/102"	88.25/102"	88.25/102"	88.25/102"	88.25/102"	130.5/144.5"	130.5/144.5"	130.5/144.5"
Stringer Width (Truck/Trailer Mount)	33.5"	33.5"	33.5"	33.5"	33.5"	33.5"	33.5"	33.5"	33.5"	NA	NA	NA
Capacity (struck level) Cu. Ft. - w/o ext.	880	960	1075	1200	1260	1200	1260	1390	1460	1460	1780	1920
Capacity (struck level) Cu. Ft. - w14" ext.	945	1110	1280	1400	1495	1400	1495	1640	1720	1720	2105	2305
SPECIFICATIONS												
Maximum Net Load (off road rating)	25 ton	25 ton	25 ton	25 ton	25 ton	27 ton	27 ton	27 ton	27 ton	30 ton	30 ton	30 ton
Apron Chains (pintle)	667XH	667XH	667XH	667XH	667XH	667XH	667XH	667XH	667XH	667XH	667XH	667XH
Rear Drive Shaft	2-3/8" HD solid shaft	2-3/8" HD solid shaft	2-3/8" HD solid shaft	2-3/8" HD solid shaft	2-3/8" HD solid shaft	2-3/8" HD solid shaft	2-3/8" HD solid shaft	2-3/8" HD solid shaft	2-3/8" HD solid shaft	2-3/8" HD solid shaft	2-3/8" HD solid shaft	2-3/8" HD solid shaft
Power Source / DIRECT GEARDRIVE	hyd	hyd	hyd	hyd	hyd-dual	hyd-dual	hyd-dual	hyd-dual	hyd-dual	hyd-dual	hyd-dual	hyd-dual
Upright Spacing	16" on ctr	16" on ctr	16" on ctr	16" on ctr	16" on ctr	16" on ctr	16" on ctr	16" on ctr	16" on ctr	16" on ctr	16" on ctr	16" on ctr
Upright / Cross member Construction	2x2 tubing	2x2 tubing	2x2 tubing	2x2 tubing	2x2 tubing	2x2 tubing	2x2 tubing	2x2 tubing	2x2 tubing	2x2 tubing	2x2 tubing	2x2 tubing
Enclosed Side Frame/Cross member Union	NA	NA	NA	NA	NA	STD	STD	STD	STD	STD	STD	STD
Unloading Time (Dependent of Hyd. System)	40 sec	40 sec	40 sec	40 sec	50 sec	50 sec	50 sec	50 sec	55 sec	55 sec	65 sec	65 sec
FEATURES												
Clad-Tuff Fiberglass Woven Side Panels	STD	STD	STD	STD	STD	NA	NA	NA	NA	NA	NA	NA
Stainless Steel Side Panels	OPT	OPT	OPT	OPT	OPT	STD	STD	STD	STD	STD	STD	STD
Solid Poly Floor - High Molecular	STD	STD	STD	STD	STD	STD	STD	STD	STD	STD	STD	STD
Rear Gate Delay System *new RT design!	OPT	OPT	OPT	OPT	OPT	STD	STD	STD	STD	STD	STD	STD
Automatic Rear Door Unlatch / Latch	STD	STD	STD	STD	STD	STD	STD	STD	STD	STD	STD	STD
Hydraulic Drive	STD	STD	STD	STD	STD	STD	STD	STD	STD	STD	STD	STD
Double Viewing Window in front gate	STD	STD	STD	STD	STD	STD	STD	STD	STD	STD	STD	STD
Rear Transport Lights-LED (new location)	STD	STD	STD	STD	STD	STD	STD	STD	STD	STD	STD	STD
Marker/Clearance Lights & D.O.T. Tape	OPT	OPT	OPT	OPT	OPT	STD	STD	STD	STD	STD	STD	STD
Personalized Farm Name on Sides	STD	STD	STD	STD	STD	STD	STD	STD	STD	STD	STD	STD
OPTIONS												
14" Removable Side Extension (screen or solid)	OPT	OPT	OPT	OPT	OPT	OPT	OPT	OPT	OPT	OPT	OPT	OPT
Fold-Down Front Extension	OPT	OPT	OPT	OPT	OPT	STD	STD	STD	STD	STD	STD	STD
Double Center Opening Doors Hyd/Air (Barn Doors)	OPT	OPT	OPT	OPT	OPT	OPT	OPT	OPT	OPT	OPT	OPT	OPT
Grain Kit / Quick Attach for Top Pivot Door	OPT	OPT	OPT	OPT	OPT	OPT	OPT	OPT	OPT	OPT	OPT	OPT
Grain Kit / Quick Attach for Barn Door Gate	OPT	OPT	OPT	OPT	OPT	OPT	OPT	OPT	OPT	OPT	OPT	OPT
Side-mtd, LED Turn Signal Light Pkg. in addition to Standard Lower Light Pkg.	OPT	OPT	OPT	OPT	OPT	OPT	OPT	OPT	OPT	OPT	OPT	OPT
Reversing Apron Feature	OPT	OPT	OPT	OPT	OPT	OPT	OPT	OPT	OPT	OPT	OPT	OPT
Set Back Axle Design/Air Lift Pusher Axles	N/A	N/A	N/A	N/A	N/A	N/A	N/A	N/A	N/A	OPT	OPT	OPT
Side Hood Deflector/backstop (RH side)	OPT	OPT	OPT	OPT	OPT	OPT	OPT	OPT	OPT	OPT	OPT	OPT
Black paint in lieu of Red	OPT	OPT	OPT	OPT	OPT	OPT	OPT	OPT	OPT	OPT	OPT	OPT
Truck Mount Kit w/Steel Fenders	OPT	OPT	OPT	OPT	OPT	OPT	OPT	OPT	OPT	STD	STD	STD
Factory Install of Truck Mount Kit	OPT	OPT	OPT	OPT	OPT	OPT	OPT	OPT	OPT	STD	STD	STD
TARP SYSTEMS												
Front to Back Scissor Tarp (electric)	OPT	OPT	OPT	OPT	OPT	OPT	OPT	OPT	OPT	OPT	OPT	OPT
Side-to-Side Roll Tarp (electric)	OPT	OPT	OPT	OPT	OPT	OPT	OPT	OPT	OPT	OPT	OPT	OPT

*Height measurements - Straight Truck Mounted Units require hardware which adds approximately 1.5" to height listed above.

FARM EQUIPMENT BUYERS TRUST THE NAME MEYER!



Model & specifications subject to change without notice or obligation.



<p>Meyer Mfg. Corp. Dorchester, Wisconsin 54425 Phone: 715/654-5132 • 1-800-325-9103 FAX: 715/654-5513 sales@meyermfg.com • www.meyermfg.com</p>	<p>YOUR DEALER IS:</p>
---	------------------------