

# SPECIFICATIONS

## HL980A

Powered By Cummins Performance Series Engine



\*Photo may include optional equipment.



**Net Power**  
351 HP (262kW) 2,000 rpm

**Operating Weight**  
30,800kg / 67,905 lb

**Bucket Capacity**  
5.0 m<sup>3</sup> ~ 6.3 m<sup>3</sup>

 **HYUNDAI**  
CONSTRUCTION EQUIPMENT



# SPECIFICATIONS HL980A

ENGINE	
Maker / Model	CUMMINS / X12
Type	Tier 4F/ Stage V Emission Certified, 6 cylinder diesel engine with No Manual Regeneration.
Gross Power (SAE J1995)	355 HP (265 kW) at 2,000 rpm
Net Power (SAE J1349)	351 HP (262 kW) at 2,000 rpm
Max. Power	380 HP (283 kW) at 1,700 rpm
Peak Gross Torque (SAE J1995)	1,370 lb.ft (1,857 N-m) at 1,400 rpm
Displacement	11.8 l (720 in <sup>3</sup> )

\*Stage V & Tier 4 Final Certified

TRANSMISSION		
Torque Converter Type	3-elements, single-stage single-phase	
Tire	29.5 R25, ★ ★, L3	
Travel Speed, km/h (mph)	4 Speed T/M	5 Speed T/M with lock up clutch
	1st	6.2 (3.9)
Forward	2nd	11.6 (7.2)
	3rd	18.2 (11.3)
	4th	36.5 (22.7)
	5th	-
	Reverse	1st
Reverse	2nd	11.6 (7.2)
	3rd	25.3 (15.7)

• This is the maximum travel speed of a standard machine with unfilled bucket.

AXLES	
Drive System	Four-wheel drive system
Mount	Fixed
Rear Axle Oscillation	Oscillating ± 11 ° degrees
Hub Reduction	Planetary reduction at wheel end
Differential	Conventional
Reduction Ratio	27.0

HYDRAULIC SYSTEM		
Type	Load sensing hydraulic system	
Pump	Variable displacement piston pump 462 lpm	
Control Valve	2 Spool (Bucket, Boom) 3 Spool (Bucket, Boom, Aux)	
System Pressure	280 bar (4,061 psi)	
Lift Circuit	The valve has four functions: Raise / Hold / Lower / Float Can adjust automatic kickout from horizontal to full lift.	
Tilt Circuit	The valve has three functions: Tilt back / Hold / Dump Can adjust automatic bucket positioner to desired load angle.	
Cylinder	Type: double acting No. of cylinders-bore × stroke	
	Lift	2-180 × 885 mm (2-7.1" × 2' 10.8")
	HL970A Tilt	1-200 × 550 mm (1-7.9" × 1' 9.7")
	HL970A XT Tilt	1-200 × 545 mm (1-7.9" × 1' 9.5")
Cycle Time	Raise from Carry Position : 6.6 Sec.	
	Dump, at maximum raise : 1.5 Sec.	
	Lower, empty, float down : 4.8 Sec.	
	Total : 12.9 Sec.	

\* Hyundai Bio Hydraulic Oil (HBHO) available

OVERVIEW		
Description	HL980A	HL980A XT
Operating Weight	30,800 kg (67,905 lb)	31,500 kg (69,450 lb)
Bucket Capacity	Heaped	5.60 m <sup>3</sup> (7.30 yd <sup>3</sup> )
	Struck	4.80 m <sup>3</sup> (6.30 yd <sup>3</sup> )
Breakout Force-Bucket	24,670 kg (54,390 lb)	24,400 kg (53,795 lb)
Tipping Load	Straight	23,100 kg (50,930 lb)
	Full Turn	20,100 kg (44,315 lb)

TIRES	
Type	Tubeless, loader design tires
Standard	29.5R25 L3 ★ ★
Options Include	29.5-25 22PR L3
	29.5-25 28PR L5
	29.5R25 XHA ★

BRAKES	
Service Brakes	Hydraulically actuated, wet disc brakes actuate all 4 wheels independent axle-by-axle system. Self adjusting & wheel speed brake.
Parking Brake	Spring-applied, hydraulically released brake
Emergency Brake	When brake oil pressure drops, indicator light alerts operator and parking brake automatically applies.

STEERING SYSTEM	
Type	Load sensing hydrostatic articulated steering
Pump	Variable displacement piston pump, 242 lpm
System Pressure	210 bar (3,046 psi)
Cylinder	Double acting 2-95 × 468 mm (2-3.7" × 1' 6.4")
Steering Angle	40° to both right and left angle, respectively
Features	Center-point frame articulation. Tilt and telescopic steering column.

SERVICE REFILL CAPACITIES	
Fuel Tank	430.0 liters (113.6 US gal)
Def Tank	44.5 liters (11.8 US gal)
Cooling System	45.5 liters (12.0 US gal)
Crankcase	34.0 liters (9.0 US gal)
Transmission	55.5 liters (14.7 US gal)
Front Axle	64.0 liters (16.9 US gal)
Rear Axle	64.0 liters (16.9 US gal)
Hydraulic Tank	184.0 liters (40.5 US gal)
Hydraulic System (Including Tank)	340.0 liters (74.8 US gal)

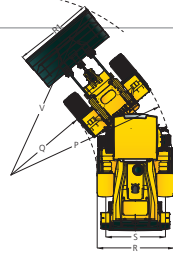
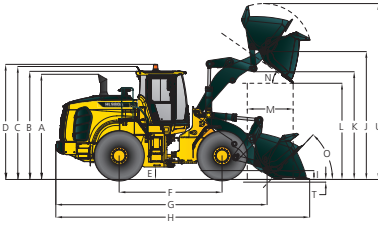
CAB NOISE LEVEL	
Guaranteed noise level presented below can be differed depending on a range of factors such as operating condition, speed of a cooling fan, types of engine and so forth. Hearing protection shall be necessary if an operator is working in the improperly maintained cabin or exposed to a noisy environment by leaving doors and/or windows open.	
With cooling fan speed at maximum value:	
Operator sound pressure level (ISO 6396:2008)	70 dB(A)
Exterior sound power level (ISO 6395:2008)	108 dB(A)

\* Distance of 15 m (49.2 ft), moving forward in second gear ratio.

CABIN	
ROPS / FOPS Cabin Meet ISO 3471 and ISO 3449	

## HL980A DIMENSIONS

All dimensions are approximate.



Unit : mm (ft/in)

Description	HL980A	HL980AXT
A Height to Top of Exhaust Pipe	3,715 (12' 2")	3,715 (12' 2")
B Height to Top of Cabin	3,865 (12' 8")	3,865 (12' 8")
C Height to Top of Product Link Antenna	3,905 (12' 10")	3,905 (12' 10")
D Height to Top of Warning Beacon	3,995 (13' 1")	3,995 (13' 1")
E Ground Clearance	495 (1' 7")	495 (1' 7")
F Wheelbase	3,700 (12' 2")	3,700 (12' 2")
G Overall Length (without Bucket)	8,175 (26' 10")	8,495 (27' 10")
H Shipping Length (with Bucket Level on Ground)	9,610 (31' 6")	9,930 (32' 7")
I Hinge Pin Height at Carry Position	535 (1' 9")	630 (2' 1")
J Hinge Pin Height at Maximum Lift	4,615 (15' 2")	4,935 (16' 2")

Description		HL980A	HL980AXT
K	Lift Arm Clearance at Maximum Lift	3,870 (12' 8")	4,190 (13' 9")
L	Dump Clearance at Maximum Lift and 45° Discharge	3,300 (10' 10")	3,620 (11' 11")
M	Reach at Maximum Lift and 45° Discharge	1,490 (4' 11")	1,525 (5' 0")
N	Dump Angle at Maximum Lift and Dump (on Stops)	50	50
O	Roll Back Angle	Ground	42
		Carry	47
P	Clearance Circle (Diameter) to Outside of Tires	13,615 (44' 8")	13,615 (44' 8")
Q	Clearance Circle (Diameter) to Inside of Tires	7,110 (23' 4")	7,110 (23' 4")
R	Width Over Tires (Unloaded)	3,190 (10' 6")	3,190 (10' 6")
R1	Overall Width (with bucket)	2,740 (9')	2,740 (9')
S	Tread Width	2,440 (8' 0")	2,440 (8' 0")

## HL980A OPERATING SPECIFICATIONS WITH BUCKETS

Linkage Bucket Type	Edge Type	Standard Linkage General Purpose - Pin On						High Lift Linkage Change
		Bolt-On Cutting Edges	2 Piece Tooth	2 Piece Tooth & Seg	Bolt-On Cutting Edges	2 Piece Tooth	Spade Nose Rock	
Capacity - Rated	m <sup>3</sup> (yd <sup>3</sup> )	5.60 m <sup>3</sup> (7.30 yd <sup>3</sup> )	5.40 m <sup>3</sup> (7.10 yd <sup>3</sup> )	5.60 m <sup>3</sup> (7.30 yd <sup>3</sup> )	6.30 m <sup>3</sup> (8.20 yd <sup>3</sup> )	6.10 m <sup>3</sup> (8.00 yd <sup>3</sup> )	5.00 m <sup>3</sup> (6.50 yd <sup>3</sup> )	
Capacity - Rated at 110% Fill Factor	m <sup>3</sup> (yd <sup>3</sup> )	6.16 m <sup>3</sup> (8.10 yd <sup>3</sup> )	5.94 m <sup>3</sup> (7.80 yd <sup>3</sup> )	6.16 m <sup>3</sup> (8.10 yd <sup>3</sup> )	6.93 m <sup>3</sup> (9.10 yd <sup>3</sup> )	6.71 m <sup>3</sup> (8.80 yd <sup>3</sup> )	5.50 m <sup>3</sup> (7.20 yd <sup>3</sup> )	
Width	mm (ft/in)	3,450 mm (11' 4" ft/in)	3,500 mm (11' 6" ft/in)	3,500 mm (11' 6" ft/in)	3,450 mm (11' 4" ft/in)	3,500 mm (11' 6" ft/in)	3,490 mm (11' 5" ft/in)	
Dump Clearance at Maximum Lift and 45° Discharge	mm (ft/in)	3,300 mm (10' 10" ft/in)	3,150 mm (10' 4" ft/in)	3,150 mm (10' 4" ft/in)	3,215 mm (10' 7" ft/in)	3,065 mm (10' 1" ft/in)	3,035 mm (9' 11" ft/in)	320 mm (1' 1" ft/in)
Reach at Maximum Lift and 45° Discharge	mm (ft/in)	1,490 mm (4' 11" ft/in)	1,610 mm (5' 3" ft/in)	1,610 mm (5' 3" ft/in)	1,575 mm (5' 2" ft/in)	1,695 mm (5' 7" ft/in)	1,685 mm (5' 6" ft/in)	35 mm (1.4" ft/in)
Digging Depth	mm (ft/in)	105 mm (0' 4" ft/in)	125 mm (0' 5" ft/in)	125 mm (0' 5" ft/in)	105 mm (0' 4" ft/in)	125 mm (0' 5" ft/in)	155 mm (0' 6" ft/in)	10 mm (0.4" ft/in)
T Shipping Length (with Bucket)	mm (ft/in)	9,610 mm (31' 6" ft/in)	9,800 mm (32' 2" ft/in)	9,800 mm (32' 2" ft/in)	9,730 mm (31' 11" ft/in)	9,920 mm (32' 7" ft/in)	9,935 mm (32' 7" ft/in)	365 mm (1' 2" ft/in)
U Overall Height with Bucket at Maximum Lift	mm (ft/in)	6,430 mm (21' 1" ft/in)	6,430 mm (21' 1" ft/in)	6,430 mm (21' 1" ft/in)	6,580 mm (21' 7" ft/in)	6,580 mm (21' 7" ft/in)	6,340 mm (20' 10" ft/in)	315 mm (1' 0" ft/in)
V Loader Clearance Circle with Bucket at Carry Position	mm (ft/in)	15,270 mm (50' 1" ft/in)	15,450 mm (50' 8" ft/in)	15,450 mm (50' 8" ft/in)	15,340 mm (50' 4" ft/in)	15,520 mm (50' 11" ft/in)	15,320 mm (50' 3" ft/in)	330 mm (1' 1" ft/in)
Static Tipping Load, Straight (No Tire Deflection)	kg (lb)	23,100 kg (50,930 lb)	23,500 kg (51,810 lb)	22,900 kg (50,490 lb)	22,800 kg (50,270 lb)	23,200 kg (51,150 lb)	22,350 kg (49,275 lb)	-1,450 kg (-3,195 lb)
Static Tipping Load, Articulated (No Tire Deflection)	kg (lb)	20,100 kg (44,315 lb)	20,450 kg (45,085 lb)	19,900 kg (43,875 lb)	19,850 kg (43,765 lb)	20,200 kg (44,535 lb)	19,500 kg (42,995 lb)	-1,400 kg (-3,085 lb)
Breakout Force	kg (lb)	24,670 kg (54,390 lb)	26,200 kg (57,765 lb)	24,670 kg (54,390 lb)	22,800 kg (50,270 lb)	24,090 kg (53,110 lb)	22,620 kg (49,870 lb)	-270 kg (-595 lb)
Operating Weight*	kg (lb)	30,800 kg (67,905 lb)	30,635 kg (67,540 lb)	30,980 kg (68,300 lb)	30,975 kg (68,290 lb)	30,810 kg (67,925 lb)	31,415 kg (69,260 lb)	700 kg (1,545 lb)

\* All height and tire related dimensions are with standard 29.5 R25, ★★, L3 tires.

## HL980A / HL980A XT BUCKET SELECTION CHART

Standard Lift Arm - General Purpose

Type	m <sup>3</sup>	Material Density [ton / m <sup>3</sup> ]													
		1.1	1.2	1.3	1.4	1.5	1.6	1.7	1.8	1.9	2.0	2.1	2.2	2.3	2.4
Cutting Edge	5.6				6.4 m <sup>3</sup>										5.3 m <sup>3</sup>
2-Bolt on Tooth	5.4					6.2 m <sup>3</sup>									5.1 m <sup>3</sup>
2-Bolt on Tooth & Segment	5.6				6.4 m <sup>3</sup>										5.3 m <sup>3</sup>
Cutting Edge	6.3		7.2 m <sup>3</sup>						6.0 m <sup>3</sup>						
2-Bolt on Tooth	6.1			7.0 m <sup>3</sup>						5.8 m <sup>3</sup>					
Spade Nose Rock	5.0			5.8 m <sup>3</sup>											4.8 m <sup>3</sup>
High Lift Arm - General Purpose															
Cutting Edge	5.6				6.4 m <sup>3</sup>										5.3 m <sup>3</sup>
2-Bolt on Tooth	5.4					6.2 m <sup>3</sup>									5.1 m <sup>3</sup>
2-Bolt on Tooth & Segment	5.6				6.4 m <sup>3</sup>										5.3 m <sup>3</sup>
Cutting Edge	6.3		7.2 m <sup>3</sup>						6.0 m <sup>3</sup>						
2-Bolt on Tooth	6.1			7.0 m <sup>3</sup>						5.8 m <sup>3</sup>					
Spade Nose Rock	5.0			5.8 m <sup>3</sup>											4.8 m <sup>3</sup>

115% 100% 95%

ENGINE	STD	OPT
<b>ENGINE, CUMMINS, B4.5</b>		
3 Stage air precleaner	•	
Alternator, 95A	•	
Fuel warmer	•	
Engine oil level dipstick gauge	•	
Fuel / water separator	•	
WGT (Waste Gate Turbo)	•	
<b>CLEAN EMISSION MODULE</b>		
DOC, DPF and SCR	•	
Active Emission Regeneration (No Manual Regeneration Required)		
Stage V Certified Emmissions	•	
EGR Free	•	
Automatic Regeneration	•	
<b>COOLING SYSTEM</b>		
Antifreeze	•	
Auto Reversing Fan (adjustable Time/ Interval Frequencies) w/ Manual Override	•	
Coolant Level Sight Gauge	•	
Fan guard	•	
Wide Fin Radiator	•	
<b>POWER TRAIN</b>		
<b>TRANSMISSION</b>		
Transmission F4/R3, computer controlled, electronic soft shift, auto-shift and kick-down features included	•	
Transmission oil sight level	•	
Wide Fin Transmission Oil Cooler	•	
<b>AXLE</b>		
Conventional (Rear)	•	
Hydraulic lock differential (Front)	•	
Limited slip differential (Front / Rear)		•
<b>BRAKE</b>		
Parking brake	•	
Service brake (Enclosed wet-disc)	•	
<b>TIRES</b>		
17.5 R25, ★★, L3	•	
17.5 R25, ★, XHA		•
<b>HYDRAULIC SYSTEM</b>		
Diagnostic pressure taps	•	
Hyundai Bio Hydraulic Oil (VG46)		•
Hydraulic oil level sight gauge	•	
Hydraulic Oil VG32		•
Hydraulic Oil VG46	•	
Wide Fin Hydraulic Oil Cooler	•	
<b>HYDRAULIC CONTROL</b>		
Fingertip		•
Joystick		•
<b>ELECTRO-HYDRAULIC CONTROL</b>		
Boom kickout, automatic	•	
Bucket positioner, automatic	•	
Extra piping for auxiliary function		•
Fingertip	•	
Joystick	•	
Quick coupler piping	•	
Ride control system	•	
<b>CAB &amp; INTERIOR</b>		
<b>ALARMS, AUDIBLE AND VISUAL</b>		
Air filter clogging	•	
Battery voltage	•	
Brake oil pressure	•	
DEF low level	•	
Engine coolant level	•	
Engine coolant temperature	•	
Engine oil pressure	•	
Fuel level	•	
Hydraulic oil temperature	•	
Parking brake	•	
Service brake oil pressure	•	
Seat belt ON/OFF	•	
Transmission error	•	
Transmission oil temperature	•	

CAB & INTERIOR	STD	OPT
<b>GAUGES</b>		
Diesel Exhaust Fluid (DEF) level	•	
Engine coolant temperature	•	
Fuel level	•	
Horn, electric	•	
Speedometer	•	
Transmission oil temperature	•	
<b>INDICATOR LIGHTS</b>		
Clutch Cut Off	•	
Differential Lock	•	
Engine auto stop	•	
FNR	•	
High beam	•	
Parking brake	•	
Pilot cut off	•	
Ride control	•	
Seat belt ON/OFF	•	
Turning light	•	
<b>LCD DISPLAY</b>		
Clock and fault code	•	
DEF level	•	
DEF low level	•	
Engine rpm	•	
Horn, electric	•	
Job time and distance	•	
Operating hour counter	•	
Transmission gear range	•	
<b>BATTERIES</b>		
850CCA, 12V, 2PCS	•	
<b>LIGHTING SYSTEM</b>		
Brake lights(Counterweight)	•	
LED dome light	•	
2 Head lights on front tower	•	
2 Head lights (LED) on front tower		•
2 Stop and tail lights	•	
4 Turn signals	•	
2 Working lights on front roof		•
4 Working lights on front roof		•
2 Working lights on rear roof		•
4 Working lights (LED) on front roof		•
2 Working lights (LED) on rear roof		•
2 Working lights on grill	•	
2 Working lights (LED) on grill	•	
<b>SWITCHES</b>		
Battery master switch	•	
Differential Lock	•	
Emergency steering		•
FNR shifter	•	
Hazard	•	
Parking	•	
Pilot cut off	•	
<b>SYSTEM MEMORY SETTINGS</b>		
Autolube, integrated in secondary display		•
Auto position	•	
Beacon light		•
Fine modulation	•	
Main light	•	
Mirror heat	•	
Quick coupler	•	
Rear wiper	•	
Ride control	•	
Work light	•	
Work load	•	
<b>IGNITION</b>		
Key	•	
Push Start Button		•
<b>CAB (SOUND SUPPRESSED)</b>		
24V to 12V DC converter (20A)	•	
Coat hook	•	
Magazine pocket	•	
One door cab	•	
Radio / USB player	•	

CAB & INTERIOR	STD	OPT
<b>CAB(SOUND SUPPRESSED)</b>		
Roller type sunshade (Front window)	•	
ROPS / FOPS CAB.	•	
Rubber floor mat	•	
Steering column, tilt and telescopic	•	
Steering wheel with knob	•	
Tinted safety glass	•	
Wrist rest	•	
<b>DOOR</b>		
Door and cab locks, one key	•	
Doors, service access (Locking)	•	
Doors, service access (Remote control)		•
<b>AUTOMATIC CLIMATE CONTROL</b>		
Air conditioner & heater	•	
Defroster	•	
Intermittent wiper and washer, front and rear	•	
<b>SEAT</b>		
3" Retractable seat belt & adjustable air suspension (Heated)	•	
<b>PERSONAL STORAGE SPACE</b>		
Console box	•	
Holder, can and cup	•	
<b>PEDALS</b>		
Accel pedal without ECO switch	•	
Dual-brake pedal		•
One accelerator pedal	•	
One brake pedal	•	
<b>SAFETY</b>		
Alarm, back-up	•	
Boom safety lock		•
Emergency steering		•
Emergency stop	•	
Fire extinguisher		•
<b>OBJECT DETECTION</b>		
AAVM - All Around View Monitoring		•
IMOD (Intelligent Moving Object Detection)		•
RADAR + Secondary Mornitor		•
<b>OTHERS</b>		
2nd Monitor		•
3 Spool MCV	•	
5 speed T/M with lockup clutch		•
Air Compressor		•
Auto Engine Shut Down	•	
Auto Grease System		•
Articulation Locking Bar	•	
Heavy Counterweight	•	
Hi-Mate, Satellite		•
ISO Quick Coupler	•	
LED Beacon Lamp		•
License Plate & 10W LED Lamp		•
Lift and tie-down hooks	•	
Loader linkage, sealed	•	
Sun Shade on Rear Window of Cabin		•
Vandalism protection caplocks	•	
Wheel Chocks		•
<b>SAFETY</b>		
Handrails	•	
Ladders	•	
Platforms	•	
Steps	•	
<b>TELEMATICS</b>		
ECD (Engine Connected Diagnostics)	•	
Hi MATE	•	
<b>GUARDS</b>		
Belly-Pan Guard		•
Crankcase	•	
Fenders (Front)	•	
Fenders (Rear)		•
Transmission	•	

\* Standard and optional equipment may vary. Contact your Hyundai dealer for more information. The machine may vary according to international standards.  
 \* The photos may include attachments and optional equipment that are not available in your area.  
 \* Materials and specifications are subject to change without advance notice.  
 \* All imperial measurements rounded off to the nearest pound or inch.

PLEASE CONTACT



www.hceamericas.com  
 6100 Atlantic Blvd., Norcross, GA 30071  
 TEL (678) 823-7777 FAX (678) 823-7778