

WHEEL LOADER FAMILY

HL940, HL940TM, HL955, HL955TM,
HL960, HL965, HL970, HL975, HL980

Tier 4 Final Engines

* Extended-reach (XT) configurations are available for all Z-bar models.



TOMORROW'S EDGE TODAY

 **HYUNDAI**
CONSTRUCTION EQUIPMENT

WHEEL LOADER FAMILY - Z-BAR LINKAGE

Hyundai HL900 series wheel loaders are available in standard, extended-reach (XT) and Tool Master (TM) models, with standard capacities ranging from 3.0 to 7.1 yd³ (2.3 to 5.4 m³) buckets. Whatever your need, there's a Hyundai HL900 series wheel loader with the right combination of power, capacity and efficiency to get the job done.

HL940



HL940

Net Power HP / kW Cummins QSB6.7 156 / 116	Operating Weight kg / lb 13,300 / 29,321	Standard Bucket m ³ / yd ³ 2.3 / 3.0
Tipping Load / Straight kg / lb 10,460 / 23,060	Dumping Clearance* mm / ft 2,785 / 9' 1.7"	

HL940xt

Net Power HP / kW Cummins QSB6.7 156 / 116	Operating Weight kg / lb 13,400 / 29,740	Standard Bucket m ³ / yd ³ 2.3 / 3.0
Tipping Load / Straight kg / lb 8,200 / 18,080	Dumping Clearance* mm / ft 3,390 / 11' 1.5"	

HL955



HL955

Net Power HP / kW Cummins QSB6.7 197 / 147	Operating Weight kg / lb 15,420 / 33,995	Standard Bucket m ³ / yd ³ 2.8 / 3.7
Tipping Load / Straight kg / lb 12,310 / 27,139	Dumping Clearance* mm / ft 2,840 / 9' 3.8"	

HL955xt

Net Power HP / kW Cummins QSB6.7 197 / 147	Operating Weight kg / lb 15,775 / 34,780	Standard Bucket m ³ / yd ³ 2.8 / 3.7
Tipping Load / Straight kg / lb 9,490 / 20,920	Dumping Clearance* mm / ft 3,415 / 11' 2.4"	

HL960



HL960

Net Power HP / kW Cummins QSB6.7 222 / 166	Operating Weight kg / lb 19,425 / 42,825	Standard Bucket m ³ / yd ³ 3.3 / 4.3
Tipping Load / Straight kg / lb 15,580 / 34,348	Dumping Clearance* mm / ft 2,935 / 9' 7.5"	

HL960xt

Net Power HP / kW Cummins QSB6.7 222 / 166	Operating Weight kg / lb 19,600 / 43,211	Standard Bucket m ³ / yd ³ 3.3 / 4.3
Tipping Load / Straight kg / lb 12,700 / 27,999	Dumping Clearance* mm / ft 3,365 / 11' 0.5"	

HL960HD

Net Power HP / kW Cummins QSB6.7 222 / 166	Operating Weight kg / lb 19,930 / 43,940	Standard Bucket m ³ / yd ³ 3.3 / 4.3
Tipping Load / Straight kg / lb 15,890 / 35,030	Dumping Clearance* mm / ft 2,935 / 9' 7.5"	

HL960HDXT

Net Power HP / kW Cummins QSB6.7 222 / 166	Operating Weight kg / lb 20,760 / 45,770	Standard Bucket m ³ / yd ³ 3.3 / 4.3
Tipping Load / Straight kg / lb 12,985 / 28,625	Dumping Clearance* mm / ft 3,365 / 11' 0"	

HL960HD



HL970

Net Power HP / kW Scania DC09 085A 308 / 230	Operating Weight kg / lb 24,040 / 52,999	Standard Bucket m ³ / yd ³ 4.2 / 5.5
Tipping Load / Straight kg / lb 19,250 / 42,439	Dumping Clearance* mm / ft 3,080 / 10' 1.3"	

HL970xt

Net Power HP / kW Scania DC09 085A 308 / 230	Operating Weight kg / lb 24,200 / 53,352	Standard Bucket m ³ / yd ³ 4.2 / 5.5
Tipping Load / Straight kg / lb 16,100 / 35,494	Dumping Clearance* mm / ft 3,570 / 11' 8.6"	



HL970

HL975



HL975

Net Power HP / kW Cummins QSG12 331 / 247	Operating Weight kg / lb 26,500 / 58,420	Standard Bucket m ³ / yd ³ 4.8 / 6.3
Tipping Load / Straight kg / lb 20,000 / 44,090	Dumping Clearance* mm / ft 3,120 / 10' 3"	

HL975xt

Net Power HP / kW Cummins QSG12 331 / 247	Operating Weight kg / lb 27,295 / 60,175	Standard Bucket m ³ / yd ³ 4.8 / 6.3
Tipping Load / Straight kg / lb 18,350 / 40,455	Dumping Clearance* mm / ft 3,485 / 11' 5"	

HL965



HL980



HL965

Net Power HP / kW Cummins QSL9 269 / 198	Operating Weight kg / lb 20,100 / 44,313	Standard Bucket m ³ / yd ³ 3.6 / 4.7
Tipping Load / Straight kg / lb 14,710 / 32,430	Dumping Clearance* mm / ft 2,955 / 9' 8.3"	

HL965xt

Net Power HP / kW Cummins QSL9 269 / 198	Operating Weight kg / lb 20,960 / 46,209	Standard Bucket m ³ / yd ³ 3.6 / 4.7
Tipping Load / Straight kg / lb 13,400 / 29,542	Dumping Clearance* mm / ft 3,440 / 11' 3.4"	

HL980

Net Power HP / kW Scania DC13 376 / 280	Operating Weight kg / lb 31,570 / 69,600	Standard Bucket m ³ / yd ³ 5.6 / 7.3
Tipping Load / Straight kg / lb 25,395 / 55,986	Dumping Clearance* mm / ft 3,300 / 10' 9.2"	

HL980xt

Net Power HP / kW Scania DC13 376 / 280	Operating Weight kg / lb 31,700 / 69,887	Standard Bucket m ³ / yd ³ 5.6 / 7.3
Tipping Load / Straight kg / lb 22,200 / 48,943	Dumping Clearance* mm / ft 3,615 / 11' 10.3"	

* Dumping Clearance at maximum height and 45-degree dump angle.

WHEEL LOADER FAMILY - TOOL MASTER LINKAGE

HL940TM



HL940TM

Net Power HP / kW Cummins QSB6.7 156 / 116	Operating Weight kg / lb 13,600 / 29,983
Tipping Load / Straight kg / lb 8,600 / 18,960	Dumping Clearance* mm / ft 2,840 / 9' 3.8"
Standard Bucket m ³ / yd ³ 2.3 / 3.0	

HL955TM

Net Power HP / kW Cummins QSB6.7 197 / 149	Operating Weight kg / lb 15,600 / 34,392
Tipping Load / Straight kg / lb 10,310 / 22,730	Dumping Clearance* mm / ft 2,840 / 9' 3.8"
Standard Bucket m ³ / yd ³ 2.7 / 3.5	

HL955TM





Tool Master Linkage

The dedicated Tool Master linkage provides premium visibility of the attachment. Quick couplers and third spool valve are standard on all Tool Master models.

Do More.
UP to 5%

Greater productivity based on
the 4th gear
(As compared to 9A series)

Spend Less.
UP to 10%

More fuel-efficient in
truck loading
(Based on 5th speed TM,
Load & Carry as compared
to 9A series)



* Photos in this brochure may include optional equipment.

Accurate Onboard Weighing System

All Hyundai HL900 series models include Hyundai's proprietary onboard weighing system as standard equipment. Accurate to +/- 1 percent, the system has automatic and manual settings for monitoring individual and cumulative bucket load weights. System measurements are displayed on the multi-function screen in the cab, providing load-weight monitoring reliable enough to support production management.



PROVEN PERFORMANCE ENHANCED BY INNOVATION

Hyundai HL900 series wheel loaders deliver maximum performance, productivity and efficiency, and have been proven to deliver as much as 5-percent greater productivity and 10-percent lower fuel consumption than previous models. Add a long list of Hyundai innovations – including an accurate onboard weighing system, unique bucket design for better load retention, and free use of Hyundai’s Hi-Mate remote management system for three years – and you’ll find the HL900 series offers unbeatable value.

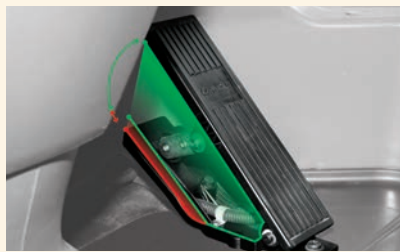
Standard, Extended-Reach and Tool Master Models Match Your Needs

HL900 series wheel loaders are available in our standard, Z-bar linkage configuration or in XT (extended-reach) versions for applications that require greater reach and higher dump heights. And if you need the versatility of a tool-carrier design, Hyundai offers two models – the HL940™ and HL955™ – with its Tool Master boom design, with parallel linkage for increased lifting capacity, improved load stability, rapid dumping capability and enhanced visibility.



Eco Gauge

Using this function, the operator can monitor fuel consumption in real time or review historical data. Displayed values include engine torque, fuel efficiency, average and total fuel consumed. Hourly and daily fuel consumption also is viewable through the menu.



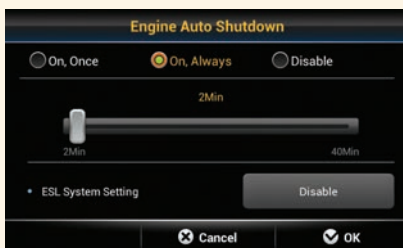
Eco Pedal (Option)

The innovative Eco Pedal helps the operator work as efficiently as possible. When working the engine throttle between zero and 85 percent of full power, fuel savings are maximized. For those tough jobs, the operator easily commands maximum performance by applying additional pressure on the Eco Pedal to gain up to 100 percent of available engine power.



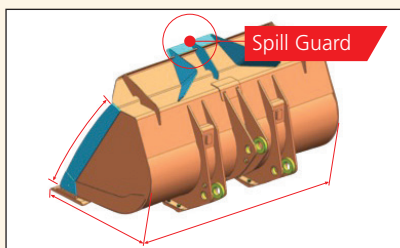
Electro-Hydraulic Control

With improved precision and ease of operation, the electro-hydraulic control system on the HL955, HL960, HL970 and HL980 models contributes to increased productivity and reduced operator fatigue.



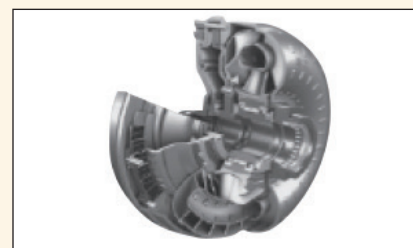
Automatic Engine Shut Down (Only with Smart Key Option)

This system turns off the engine when entering idle state to minimize unnecessary fuel consumption and emissions. Operators can select the operating mode and idle time, depending on the work condition, which contributes to overall fuel efficiency.



Improved Bucket Fill Factor

Hyundai’s improved bucket design features an innovative wider opening, curved side plates and enhanced spill guard to maximize bucket capacity and reduce material loss when traveling. Durability is also enhanced through the use of wear-resistant HARDOX 400 grade steel in key structural areas of the bucket.



Optional Five-speed Lockup Clutch

With the five-speed transmission and lockup clutch, operators can select the appropriate gear for their work conditions, thereby reducing fuel consumption. (Not available on HL940.)



Soft End Stop		
• Boom Up	<input checked="" type="radio"/> On	<input type="radio"/> Off
• Boom Down	<input checked="" type="radio"/> On	<input type="radio"/> Off
• Bucket In	<input checked="" type="radio"/> On	<input type="radio"/> Off
• Bucket Dump	<input checked="" type="radio"/> On	<input type="radio"/> Off
Default	CANCEL	OK

Soft End Stop

This function reduces the hydraulic speed of the cylinder as it reaches the end of its stroke. This lessens the shock load of the stroke, which improves material retention, while increasing operator comfort and productivity.



VERSATILE WORKHORSES DELIVER RESULTS

As the workhorses in the industry, Hyundai wheel loaders are found all over North America in severe-duty applications such as road building, sand and gravel pits, quarries, mines, recycling yards, lumber yards, feedlots and more. Customers choose Hyundai machines for their power, productivity and ease of operation. The new HL900 series continues that legacy while delivering an enhanced operator environment, productivity improvements and additional efficiencies that make these machines the best value on the market.

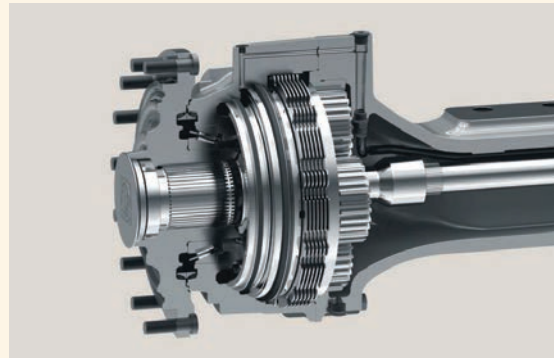
Tier 4 Final Power and Economy

Hyundai HL900 series wheel loaders incorporate new engine technologies for Tier 4 Final compliance and include many new features that contribute to overall fuel and production efficiency.



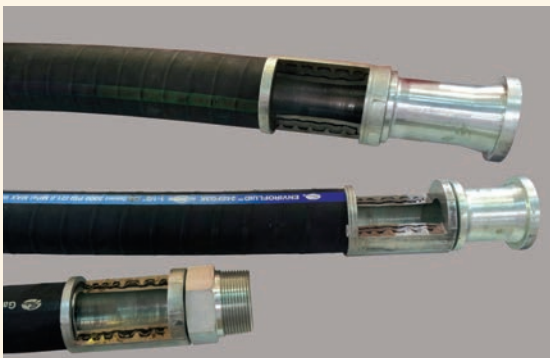
Durable Structure for After-Treatment

HL900 series wheel loaders are equipped with a robust support and shock absorbing system to prevent failure of after-treatment system components during operation.



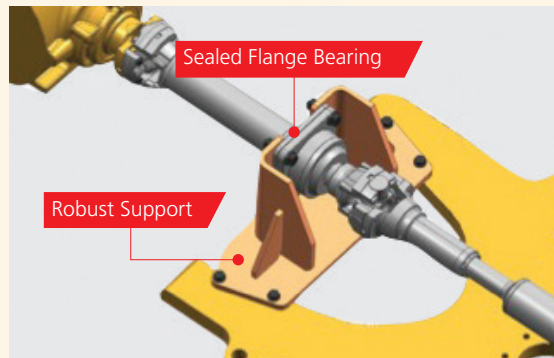
Sintered Brake Disc

The HL900 series features longer-lasting sintered brake discs designed to produce less heat and vibration, which improves overall brake durability. This service-friendly design contributes to reduced downtime for brake maintenance and reduces overall cost of ownership.



High-Quality Hydraulic Hoses

Hyundai partners with the Gates Corporation to supply high-quality hydraulic hoses, which are three to four times more durable than other hoses commonly found in the industry.



Sealed Drive Line Center Bearing

Hyundai's wheel loaders are designed for extended service life. A sealed drive-line center bearing with a reinforced support area contributes to improved long-term reliability.



Tier 4 Final Engine Technologies

Cummins engines power the smaller HL940, HL955 and HL960 models. The larger HL970 and HL980 models are powered by Scania engines. Cummins and Scania engine technologies both achieve Tier 4 Final emissions compliance through a combination of SCR (selective catalytic reduction) and DOC (diesel oxidation catalyst) systems using DEF (diesel exhaust fluid).

Premium-Quality ZF Axles

State-of-the-art ZF axles are standard throughout the Hyundai HL900 series. Limited-slip differentials front and rear are standard on the HL940, for ideal versatility in multiple applications. The HL955, HL960, HL970 and HL980 models all feature locking front differentials and conventional rear differentials for optimum traction and versatility.



SMART Terminal (Wi-Fi Direct/Smartphone)

The Miracast system connects to an operator's smartphone via the phone's Wi-Fi. This enables operators to view their phone screen on the monitor for web surfing, videos and/or music.

BUILT FOR EVERYONE

Cabs on the Hyundai HL900 series wheel loaders are all about operator comfort and control. They're up to 10-percent larger than previous models, and offer additional floor space and improved visibility. In-cab sound levels are more than 2 dB lower, making this one of the quietest cabs in the industry.

Enhancing Operator Productivity

The cab is equipped with features that enhance operator productivity, including a larger 7" (177 mm) interactive touch-screen monitor, optional fingertip controls, fully adjustable and heated air-ride seat, and centralized control switches for added convenience.



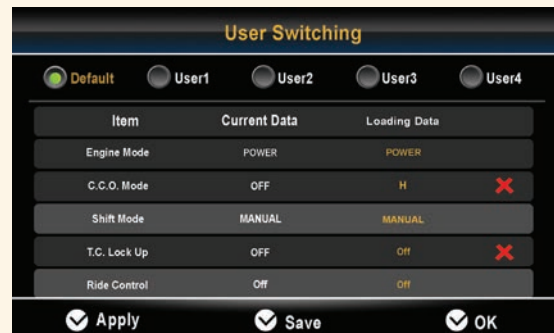
Intelligent, Wide Touchscreen Monitor

The 7" (177 mm) touchscreen display on the HL900 series is larger than the previous model and provides excellent readability.



Audio System

The radio with MP3 functions, the integrated Bluetooth hands-free feature, and the built-in microphone allow for phone calls and for listening to music while in the field.



User Modes

To adapt to different users and operations quickly, four different user modes can be saved within the monitor. Operators can save four different combinations of settings including transmission mode, engine mode and more.

SAFETY, SERVICEABILITY AND RELIABILITY

Enhanced safety features on the new HL900 series include an improved, standard rearview camera that delivers higher resolution and better nighttime visibility, standard heated mirrors that provide a clearer view for safer operation in cold weather conditions, large access steps to the cab, convenient grab handles and upper guard rails near the engine compartment, and programmable speed-limit setting.

Reliability and Serviceability

Hyundai uses premier quality components throughout

the HL900 series, including ZF transmissions and axles. Hyundai now offers front- and rear-axle cooler options for select larger models that work in heavy load conditions such as snow removal and long-distance travel applications. Longer-life brake discs made from sintered material improve overall braking effectiveness and service life. Easy-to-reach centralized lubrication reduces machine service downtime. Additionally, the driveline center bearing is fully sealed and supported by a heavy-duty bracket for longer service life and reduced maintenance.



Fully Adjustable Seat Armrest, Seat and Control Lever

All HL900 series wheel loaders are equipped with large, comfortable, high-quality seats with headrests. The armrest and controller are mounted to the seat so they move with the operator, which improves comfort and reduces fatigue.



Fully Soundproofed, More Spacious Cab

The state-of-the-art noise reduction technology found on the HL900 series models results in one of the quietest working environments in the industry. In-cab sound levels are as low as 68 dB.



Electro-Hydraulic Control Lever

The optional EH control lever, standard equipped on the HL955 and larger Hyundai wheel loaders, facilitates easy operation of attachments, with integrated third-spool proportional control. This improves productivity and minimizes operator fatigue. The HL940, which is not EH, has a smaller lever to the side for third-spool attachment function. (EH control can be added as a factory option)



New Air Conditioning System

Hyundai's wheel loaders have optimized air flow to maximize heating and cooling performance. The air conditioning system is located on the right side of the cab to allow for easier maintenance and filter replacement. The capacity of the inner filter also was increased. Filter material was improved for superior filtering performance.



2dB

reduction in cab sound
(Compared to 9A series)



Fully Sealed Engine Room with Tilt-Back Hood

The HL900 series has improved accessibility to the sealed engine room with a tilt-back hood to allow for easy cleaning and maintenance. The engine compartment was designed to prevent any possibility of fire due to contamination. The wide open access when the hood is open also enhances serviceability of the engine and cooling room.

Centralized and Easy Access to Service Points

All of the service points for the electric and hydraulic systems are located in easy-to-reach areas for optimum accessibility and maintenance.

Consolidated Initial Maintenance Interval

The initial replacement interval for engine oil and filter is extended to 250 hours to further reduce maintenance costs.

Engine Air Filter with Increased Service Life

The HL900 series has a large-volume air cleaner, automatic dust ejector, and a three-stage turbo pre-cleaner (optional) to improve the replacement cycle and durability of replacement parts.

BACKED BY HYUNDAI

Built to Perform

Hyundai wheel loaders, like all Hyundai equipment, are built to perform, day in and day out, to meet our customers' toughest expectations and quality standards.



Support

When you purchase a Hyundai machine, you know your investment is as solid as the steel on our buckets and booms. You can count on the Hyundai difference:

- Products packed with value – with more standard features on every machine
- Knowledgeable, trained and experienced dealer service personnel, backed by our solutions-focused field support team
- Industry-leading standard warranty of 3 years or 3,000 hours plus 5-year, 10,000-hour structural warranty, as well as the Hyundai Extend optional extended-warranty program
- Maintains an average 98-percent fill rate for parts orders submitted by our dealers on behalf of customers like you. Our warehouse in suburban Atlanta has more than \$30 million in inventory

North American Dealer Network

Hyundai construction equipment is sold and serviced through a growing network of more than 70 of North America's top equipment dealerships, with more than 100 locations across the United States and Canada.



Hi-Mate Remote Management System

Hi-Mate, the proprietary Hyundai remote management system, is provided free of charge for three years with all new Hyundai wheel loaders. This GPS-based software system allows equipment owners and service personnel to track and monitor Hyundai construction machines at any time and in any location, monitoring key machine components such as the engine, hydraulics and electrical system. Hi-Mate saves time and money for the owner by promoting greater preventive maintenance to reduce equipment downtime.



PLEASE CONTACT



www.hceamericas.com
6100 Atlantic Blvd., Norcross, GA 30071
TEL (678) 823 7777 FAX (678) 823 7778