

SPECIFICATIONS

HX330L

Tier 4 Final Engine

Net Power

SAE J1349 / 270 HP
(202 kW) at 1,800 rpm

Bucket Range

1.88 yd³ - 2.75 yd³
Standard Bucket

1.44 m³ (1.88 yd³)

Operating Weight

35,050 kg / 77,270 lb

ENGINE		
Make / Model		Cummins QSL9
Type		4-cycle turbocharged, charge air-cooled, diesel engine
Rated flywheel horsepower	SAE J1995 (gross)	284 HP (212 kW) at 1,800 rpm
	J1349 (net)	270 HP (202 kW) at 1,800 rpm
Max. torque		123.7 kgf·m (895 lbf-ft) at 1500 rpm
Bore X stroke		114 x 145 mm (4.49" x 5.69")
Piston displacement		8,900 cc (543 in ³)
Batteries		2 x 12 V x 160 Ah
Starting motor		24 V - 7.8 kW
Alternator		24 V - 95 Amp

HYDRAULIC SYSTEM

MAIN PUMP	
Type	Variable-displacement piston pumps
Max. flow	2 x 277.2 l/min (73.2 gpm)
Sub-pump for pilot circuit (Gear Pump)	26.3 l/min (6.9 gpm)

CROSS-SENSING AND FUEL-SAVING PUMP SYSTEM

HYDRAULIC MOTORS	
Travel	Two speed axial piston motor
Swing	Axial piston motor

RELIEF VALVE SETTING

Implement circuits	400 kgf/cm ² (5,690 psi)
Travel	350 kgf/cm ² (4,980 psi)
Power boost (boom, arm, bucket)	380 kgf/cm ² (5,400 psi)
Swing circuit	300 kgf/cm ² (4,270 psi)
Pilot circuit	40 kgf/cm ² (569 psi)
Service valve	Installed

HYDRAULIC CYLINDERS

No. of cylinders bore X stroke	Boom: 150 x 1,480 mm (5.9 x 58.3")
	Arm: 160 x 1,685 mm (6.3 x 66.3")
	Bucket: 140 x 1,285 mm (5.5 x 50.6")

DRIVES & BRAKES

Drive method	Fully hydrostatic type
Drive motor	Axial piston motor, in-shoe design
Reduction system	Planetary reduction gear
Max. drawbar pull	27,000 kgf (59,500 lbf)
Max. travel speed (high / low)	5.9 km/hr (3.67 mph)
	3.4 km/hr (2.11 mph)
Gradeability	35° (70%)
Parking brake	Multi wet disc brake

CONTROL

Pilot pressure operated joysticks and pedals with detachable lever for minimal operator fatigue.	
Pilot control	Two joysticks with one safety lever (LH): Swing and arm (RH): Boom and bucket (ISO)
Traveling and steering	Two levers with pedals
Engine throttle	Electric, dial type



OPERATING WEIGHT (APPROXIMATE)

Operating weight, including 6,450 mm (21' 2") boom, 3,200 mm (10' 6") arm, SAE heaped 1.44 m³ (1.88 yd³) bucket, lubricant, coolant, full fuel tank, full hydraulic tank, 6,600 kg (14,550 lb) counterweight and all standard equipment.

OPERATING WEIGHT

Shoes	Width mm (in)	Operating weight		Ground pressure
		kg (lb)	kgf/cm ² (psi)	
Triple grouser	700 (28")	HX330L	34,670 (76,430)	0.57 (8.11)
	800 (32")	HX330L	35,050 (77,270)	0.51 (7.25)
	900 (36")	HX330L	35,430 (78,110)	0.46 (6.54)

SWING SYSTEM

Swing motor	Fixed displacement axial piston motor
Swing reduction	Planetary reduction gear
Swing bearing lubrication	Grease-bathed
Swing brake	Multi wet disc brake
Swing speed	9.1 rpm

SERVICE REFILL CAPACITIES

	liters	US gal
Refilling		
Fuel tank	600	154.7
Engine coolant	55	14.5
Engine oil	30	7.9
Swing device	11	2.91
Final drive (each)	7.8	2.06
Hydraulic system (including tank)	330	87.2
Hydraulic tank	210	55.5
DEF/AdBlue®	42.5	11.2

UNDERCARRIAGE

The X-leg type center frame is integrally welded with reinforced box-section track frames. The undercarriage includes lubricated rollers, idlers, track adjusters with shock-absorbing springs and sprockets, and a track chain with double or triple grouser shoes.

Center frame	X - leg type
Track frame	Pentagonal box type
No. of shoes on each side	48 EA
No. of carrier roller on each side	2 EA
No. of track roller on each side	9 EA
No. of rail guard on each side	2 EA

SPECIFICATIONS HX330L

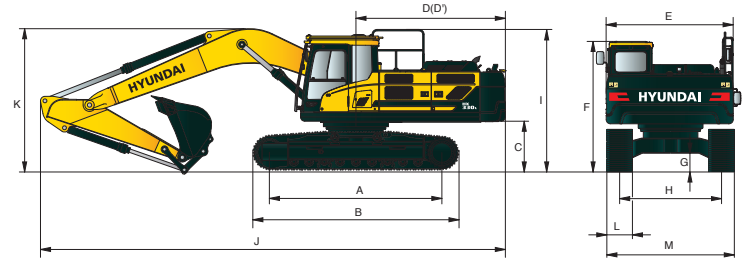
Tier 4 Final Engine

HX330L DIMENSIONS

Unit: mm (ft-in)

6.45 m (21' 2"), 6.15 m (20' 2") boom and 2.2 m (7' 3"), 2.5 m (8' 2"), 3.2 m (10' 6"), 4.05 m (13' 3") arm

A	Tumbler distance	4,030 (13' 3")
B	Overall length of crawler	4,940 (16' 2")
C	Ground clearance of counterweight	1,200 (3' 11")
D	Tail-swing radius	3,570 (11' 7")
D'	Rear-end length	3,505 (11' 5")
E	Overall width of upper structure	2,980 (9' 9")
F	Overall height of cab	3,160 (10' 4")
G	Min. ground clearance	500 (1' 8")
H	Track gauge	2,680 (8' 10")
I	Overall height of guardrail	3,350 (11' 0")

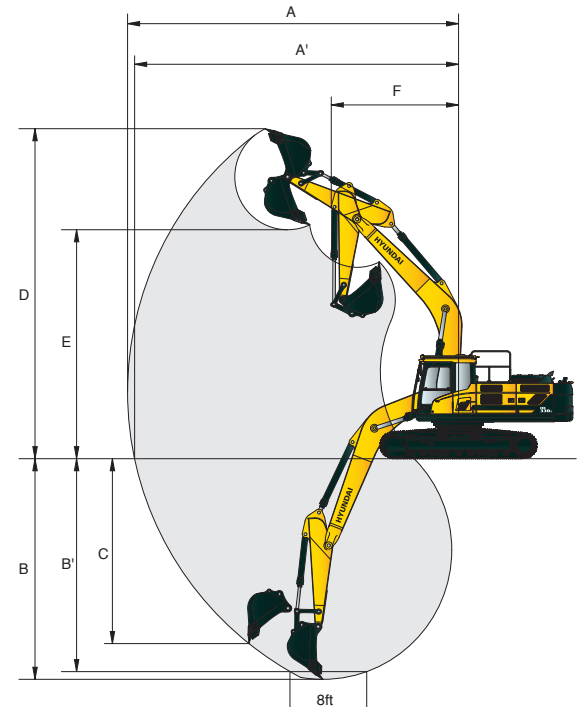


Boom length	6,150 (20' 2")	6,450 (21' 2")			
Arm length	2,200 (7' 3")	2,500 (8' 2")	3,200 (10' 6")	4,050 (13' 3")	
J Overall length	11,170 (36' 8")	11,470 (37' 8")	11,340 (37' 2")	11,220 (36' 10")	11,220 (36' 10")
K Overall height of boom	3,680 (12' 1")	3,740 (11' 11")	3,760 (12' 0")	3,380 (11' 1")	3,860 (12' 8")
L Track shoe width	600 (24")	700 (28")	800 (32")	900 (36")	
M Overall width	3,280 (10' 9")	3,380 (11' 1")	3,480 (11' 5")	3,580 (11' 5")	

HX330L WORKING RANGE

Unit : mm (ft-in)

	6,150 (20' 2")	6,450 (21' 2")			
Boom length	6,150 (20' 2")	6,450 (21' 2")			
Arm length	2,200 (7' 3")	2,200 (7' 3")	2,500 (8' 2")	3,200 (10' 6")	4,050 (13' 3")
A Max. digging reach	10,020 (32' 10")	10,330 (33' 11")	10,550 (34' 7")	11,140 (36' 7")	11,950 (39' 2")
A' Max. digging reach on ground	9,800 (32' 2")	10,110 (33' 2")	10,330 (33' 11")	10,940 (35' 11")	11,760 (38' 7")
B Max. digging depth	6,160 (20' 3")	6,370 (20' 11")	6,670 (21' 11")	7,370 (24' 2")	8,220 (26' 12")
B' Max. digging depth (8' level)	5,950 (19' 6")	6,160 (20' 3")	6,470 (21' 3")	7,210 (23' 8")	8,080 (26' 6")
C Max. vertical wall digging depth	5,710 (18' 9")	5,980 (19' 7")	5,920 (19' 5")	6,360 (20' 10")	7,260 (23' 10")
D Max. digging height	9,940 (32' 7")	10,220 (33' 6")	10,170 (33' 4")	10,310 (33' 10")	10,710 (35' 2")
E Max. dumping height	6,780 (22' 3")	7,050 (23' 2")	7,050 (23' 2")	7,240 (23' 9")	7,630 (25' 0")
F Min. swing radius	4,520 (14' 10")	4,700 (15' 5")	4,550 (14' 11")	4,460 (14' 8")	4,470 (14' 8")



DIGGING FORCE

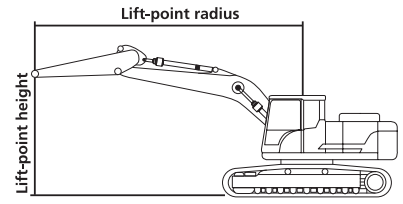
Boom	Length	mm (ft-in)	6,150 (20' 2")		6,450 (21' 2")		
	Weight	kg (lb)	2,950 (6,500)		3,030 (6,680)		
Arm	Length	mm (ft-in)	2,200 (7' 3")	2,200 (7' 3")	2,500 (8' 2")	3,200 (10' 6")	4,050 (13' 3")
	Weight	kg (lb)	1,560 (3,440)	1,560 (3,440)	1,650 (3,640)	1,770 (3,900)	1,870 (4,120)
Bucket digging force	SAE	kN	189.3 [205.5]	189.3 [205.5]	189.3 [205.5]	189.3 [205.5]	189.3 [205.5]
		kgf	19,300 [20,950]	19,300 [20,950]	19,300 [20,950]	19,300 [20,950]	19,300 [20,950]
		lbf	42,550 [46,200]	42,550 [46,200]	42,550 [46,200]	42,550 [46,200]	42,550 [46,200]
	ISO	kN	211.8 [230.0]	211.8 [230.0]	211.8 [230.0]	211.8 [230.0]	211.8 [230.0]
		kgf	21,600 [23,450]	21,600 [23,450]	21,600 [23,450]	21,600 [23,450]	21,600 [23,450]
		lbf	47,620 [51,700]	47,620 [51,700]	47,620 [51,700]	47,620 [51,700]	47,620 [51,700]
Arm crowd force	SAE	kN	196.6 [213.4]	196.6 [213.4]	178.9 [194.2]	143.2 [155.5]	119.6 [129.9]
		kgf	20,000 [21,760]	20,000 [21,760]	18,200 [19,810]	14,600 [15,850]	12,200 [13,240]
		lbf	44,190 [47,980]	44,190 [47,980]	40,220 [43,670]	32,190 [34,950]	26,890 [29,190]
	ISO	kN	202.8 [220.2]	202.8 [220.2]	185.1 [201.0]	147.1 [159.7]	122.7 [133.3]
		kgf	20,700 [22,450]	20,700 [22,450]	18,900 [20,500]	15,000 [16,290]	12,515 [13,590]
		lbf	45,600 [49,510]	45,600 [49,510]	41,620 [45,190]	33,070 [35,900]	27,590 [29,950]

Note : Boom weight includes arm cylinder, piping, and pin
Arm weight includes bucket cylinder, linkage, and pin

[Power Boost]

SPECIFICATIONS HX330L

Tier 4 Final Engine



Lifting Capacity

Boom: 6.45 m (21' 2")

Arm: 3.2 m (10' 6")

Bucket: 1.44 m³ (1.88 yd³) SAE heaped

Shoe 800 mm (32") triple grouser, CWT 6,600 kg (14,550 lb)

Capacities based on North American Standard Configuration in accordance with ISO condition 2 standard.



Rating over front



Rating over side or 360 degree

Lift-point height m (ft)		Lift-point radius										At max. reach		
		3.0 m (9.8 ft)		4.5 m (14.8 ft)		6.0 m (19.7 ft)		7.5 m (24.6 ft)		9.0 m (29.5 ft)		Capacity		Reach m (ft)
7.5 m 24.6 ft	kg lb							*7,770 *17,120	7,570 16,690			*6,550 *14,430	*6,550 *14,430	7.76 (25.5)
6.0 m 19.7 ft	kg lb							*9,290 *20,470	7,510 16,550			*6,340 *13,980	5,930 13,080	8.63 (28.3)
4.5 m 14.8 ft	kg lb					*11,370 *25,070	10,260 22,610	*10,080 *22,220	7,300 16,090	*7,820 *17,250	5,460 12,050	*6,370 *14,050	5,290 11,660	9.18 (30.1)
3.0 m 9.8 ft	kg lb			*18,340 *40,430	14,790 32,610	*13,420 *29,580	9,730 21,450	10,470 23,070	7,030 15,510	7,910 17,430	5,350 11,790	*6,610 *14,570	4,950 10,920	9.45 (31.0)
1.5 m 4.9 ft	kg lb			*18,340 *40,440	13,940 30,730	14,320 31,570	9,270 20,440	10,190 22,470	6,790 14,960	7,770 17,130	5,230 11,520	*7,070 *15,580	4,840 10,680	9.47 (31.1)
Ground Line	kg lb			*19,370 *42,710	13,590 29,960	13,990 30,840	8,990 19,810	9,990 22,030	6,610 14,560	7,680 16,930	5,140 11,330	7,380 16,270	4,950 10,910	9.25 (30.4)
-1.5 m -4.9 ft	kg lb	*12,510 *27,590	*12,510 *27,590	*22,400 *49,390	13,540 29,840	13,860 30,560	8,870 19,560	9,910 21,840	6,530 14,390			7,950 17,520	5,310 11,700	8.77 (28.8)
-3.0 m -9.8 ft	kg lb	*20,130 *44,380	*20,130 *44,380	*21,230 *46,800	13,660 30,120	13,910 30,660	8,910 19,650	9,960 21,960	6,580 14,500			9,160 20,180	6,090 13,420	7.97 (26.2)
-4.5 m -14.8 ft	kg lb	*25,050 *55,220	*25,050 *55,220	*18,390 *40,540	13,970 30,800	*13,830 *30,500	9,140 20,140					*11,710 *25,810	7,810 17,220	6.75 (22.1)

NOTES:

- Lifting capacities are based on ISO 10567.
- Lifting capacity of the HX Series does not exceed 75% of tipping load with the machine on firm, level ground or 87% of full hydraulic capacity.
- The Lift-point is bucket pivot mounting pin on the arm (without bucket mass).
- (*) indicates load limited by hydraulic capacity.



SPECIFICATIONS HX330L

Tier 4 Final Engine

ENGINE	STD	OPT
Cummins QSL 9 engine	•	
HYDRAULIC SYSTEM		
Intelligent Power Control (IPC)		
3-power mode, 2-work mode, user mode	•	
Variable power control	•	
Pump flow control	•	
Attachment mode flow control	•	
Engine auto idle	•	
Engine auto shutdown control		•
Electronic fan control	•	
CAB & INTERIOR		
ISO Standard cabin		
Rise-up type windshield wiper	•	
Radio / USB player	•	
Bluetooth / hands-free mobile phone system with USB	•	
Miracast		
12-volt power outlet (24V DC to 12V DC converter)	•	
Electric horn	•	
All-weather steel cab with 360° visibility	•	
Safety glass windows	•	
Sliding fold-in front window	•	
Sliding side window (LH)	•	
Lockable door	•	
Hot and cool box	•	
Storage compartment and ashtray	•	
Transparent cabin roof cover	•	
Sun visor	•	
Door and cab locks, one key	•	
Mechanical suspension seat with heater	•	
Pilot-operated adjustable joystick	•	
Console box height adjust system	•	
Cabin lights	•	
Cabin front window rain guard		•
Cabin roof-steel cover		•
Automatic climate control		
Air conditioner and heater	•	
Defroster	•	
Starting aid (air grid heater) for cold weather	•	
Centralized monitoring		
8" LCD display	•	
Engine speed or trip meter / accel.	•	
Engine coolant temperature gauge	•	
Max. power	•	
Low speed / high speed	•	
Auto idle	•	
Overload		•
Check engine	•	
Air cleaner clogging	•	
Indicators	•	
ECO gauges	•	
Fuel level gauge	•	
Hydraulic oil temperature gauge	•	
Fuel warmer	•	
Warnings	•	
Communication error	•	
Low battery	•	
Clock	•	

CAB & INTERIOR	STD	OPT
Seat		
Adjustable air suspension seat with heater	•	
Cabin FOPS/FOG		
FOG ISO 10262 Level 2	Front and top guard	•
(FOPS ISO 3449 Level 2)	Top guard	•
Cabin ROPS		
ROPS ISO 12117-2	•	
SAFETY		
STD		
Battery master switch	•	
Rearview camera	•	
AAVM (All-Around View Monitoring)		•
Six front working lights (4 boom mounted, 2 front frame mounted)	•	
Dual boom working lights	•	
Travel alarm	•	
Rear work lamp		•
Beacon lamp		•
Automatic swing brake	•	
Boom holding system	•	
Arm holding system	•	
Safety lock valve for boom cylinder with overload warning device		•
Safety lock valve for arm cylinder		•
Swing Lock System		•
Three outside rearview mirrors	•	
OTHER		
STD		
OPT		
Booms		
6.15 m, 20' 2"		•
6.45 m, 21' 2"	•	
Arms		
2.2 m, 7' 3"		•
2.5 m, 8' 2"		•
3.2 m, 10' 6"	•	
4.05 m, 13' 3"		•
Removable clean-out dust net for cooler	•	
Removable reservoir tank	•	
Fuel pre-filter	•	
Fuel warmer		•
Self-diagnostics system	•	
Hi-mate Remote Management System	Mobile Satellite	•
Batteries (2 x 12V x 160 Ah)	•	
Fuel-filler pump (50 l/min / 13 gpm)		•
Single-acting piping kit (breaker, etc.)		•
Double-acting piping kit (clamshell, etc.)	•	
Rotating piping kit		•
Quick coupler piping		•
Quick coupler		•
Boom float control		•
One-pedal straight travel system		•
Pilot accumulator	•	
Pattern-change valve (SAE and ISO)	•	
Tool kit		•
UNDERCARRIAGE		
STD		
OPT		
Lower frame under cover (additional)		•
Lower frame under cover (normal)	•	
Track shoes		
Triple grouser shoes (700 mm, 28")		•
Triple grouser shoes (800 mm, 32")	•	
Triple grouser shoes (900 mm, 36")		•
Track rail guard	•	
Full track rail guard		•

NOTE: Standard and optional equipment may vary. Materials and specifications are subject to change without advance notice. Contact your Hyundai dealer for more information.

PLEASE CONTACT



www.hceamericas.com

6100 Atlantic Blvd., Norcross, GA 30071

TEL (678) 823 7777 FAX (678) 823 7778