

AMX 520T SPECIFICATIONS

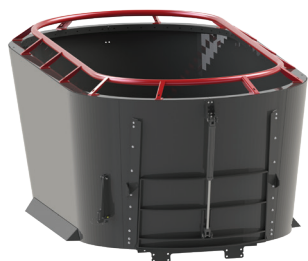
Tub

Tub Capacity / with 10" extension	451 ft ³ (12.7 m ³) / 520 ft ³ (14.7 m ³)
Number of Screws	1
Screw Speed	39 rpm @ 1000 PTO
Screw Thickness and Material	5/8" (15.9 mm) Steel
Tub Wall Thickness and Material	1/4" (6.4 mm) AR200 Steel
Tub Floor Thickness and Material	3/4" (19 mm) Steel
Aggression Plates	Yes
Weigh System	4 Point Weighing System

Unloading

Conveyors	Chain with Steel Slats
Unload Height Flat	32" (813 mm)
Unload Height Dogleg	46" (1168 mm)
Unload Height Hydraulic	32" - 56" (813 mm - 1422 mm)
Unload Door Width	58" (1473 mm)

Hay Ring (Optional)



Drivetrain

PTO Minimum HP	100 hp (75 kW)
PTO Drive	1 3/8" PTO Yoke, Cat 6 PTO, Shear Protection, 1000 rpm
Tires	Two 445/50-22.5
Suspension	Single Axle, HD 10 Bolt Hubs

Dimensions and Weight

Unloaded Weight	10600 lb (4818 kg)
Max Payload	10040 lb at 20 mph (6382 kg at 32 kph)
Length	227" (5.77 m)
Height - Standard	117" (2.97 m)
Height - With 10" Extension	127" (3.23 m)
Width - Flat Conveyor	109" (2.77 m)
Wheel Track Width	100" (2.54 m)

All weights and transport dimensions are estimates and are subject to change. While every effort has been made to ensure that the information is accurate/current at the time of production, all specifications are subject to change.

If livestock is being fed, it is the operator's responsibility to ensure that the materials in the processed feed mix are suitable. Some of the wrapping material (twine, net wrap or other materials) may be discharged with the feed if the wrapping materials are not removed prior to processing.

For the latest product information, please visit: www.highlinemfg.com.