

AMX 850T SPECIFICATIONS

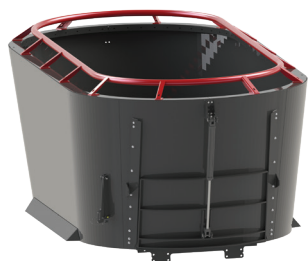
Tub

Tub Capacity / with 10" extension	745 ft ³ (21 m ³) / 850 ft ³ (24 m ³)
Number of Screws	2
Screw Speed	33 rpm @ 1000 PTO
Screw Thickness and Material	5/8" (15.9 mm) Steel
Tub Wall Thickness and Material	1/4" (6.4 mm) AR200 Steel
Tub Floor Thickness and Material	3/4" (19 mm) Steel
Aggression Plates	Yes
Weigh System	4 Point Weighing System

Unloading

Conveyors	Chain with Steel Slats
Unload Height Flat	36" (914 mm)
Unload Height Dogleg	50" (1270 mm)
Unload Height Hydraulic	36" - 60" (914 m - 1524 mm)
Unload Door Width	58" (1473 mm)

Hay Ring (Optional)



Drivetrain

PTO Minimum HP	150 hp (112 kW)
PTO Drive	1 3/8" PTO Yoke, Cat 6 PTO, Shear Protection, 1000 rpm
Tires - Single Axle	Two 445/50-22.5
Tires - Tandem Axle	Four 550/45-22.5 20 ply
Suspension	Single Axle, HD 10 Bolt Hubs or Tandem Walking Beam

Dimensions and Weight

Unloaded Weight	20200 lb (9182 kg)
Max Payload - Single Axle	17000 lb at 20 mph (7711 kg at 32 kph) 24000 lb at 7 mph (10886 kg at 11 kph)
Max Payload - Tandem Axle	24000 lb at 20 mph (10886 kg at 32 kph)
Length	316" (8.03 m)
Height - Standard	114" (2.90 m)
Height - With 10" Extension	124" (3.15 m)
Width - Flat Conveyor	109" (2.77 m)
Wheel Track Width	107" (2.72 m)

All weights and transport dimensions are estimates and are subject to change. While every effort has been made to ensure that the information is accurate/current at the time of production, all specifications are subject to change.

If livestock is being fed, it is the operator's responsibility to ensure that the materials in the processed feed mix are suitable. Some of the wrapping material (twine, net wrap or other materials) may be discharged with the feed if the wrapping materials are not removed prior to processing.

For the latest product information, please visit: www.highlinemfg.com.