

Industry Favored Leader In Manufacturing Firewood Processors
HWP-100 Firewood Processor

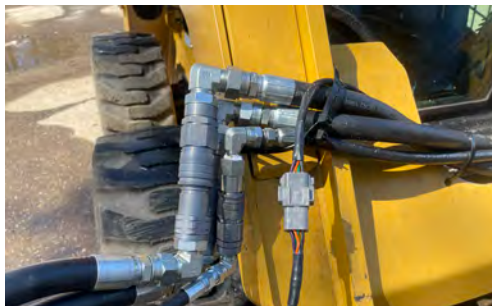
HWP-100

Perfect for residential and farm use, the HWP-100 Firewood Processors truly make the job hassle-free. The lighter weight processor allows you to operate on tractors, excavators, mini skid steers and some mini skid loaders.



Take the processor to the wood, instead of the wood to the processor!

Attach and detach with ease!!



All from the comfort of the cab, one person can easily and efficiently perform wood cutting and splitting tasks. The mobility and efficiency of these Firewood Processors are time savers!



HWP-100 Firewood Processor

HWP-100 Specifications



| SPECS | VALUE |
|---------------------|---|
| LENGTH | Travel= 80" (203 cm) Working= 100 (254 cm) |
| WIDTH | 41" (104 cm) |
| HEIGHT | 41" (104 cm) |
| WEIGHT | 706 lbs (320 kg) |
| MATERIAL | 3/16" Steel |
| MINIMUM PRESSURE | 2800 (193 bar) |
| FLOW | 10-15 gpm (39 - 57 l/min) |
| CONNECTIONS | 1-Pressure, 1-Return |
| MAX LOG DIAMETER | 14" (37 cm) |
| MAX LOG LENGTH | 10' (3.05 m) |
| MIN LOG LENGTH | 4' (1.22 m) |
| FIREWOOD CUT LENGTH | Up to 16" (33cm - 38 cm) |
| SAW BAR | 18" (64 cm) Versacut |
| SAW CHAIN | 68 DL 3/8 pitch 0.58 |
| SAW MOTOR | Gear |
| SAW OILER | Automatic 2 Qt (1.89 l) Tank |
| MAX SAW CUT | 14" (37 cm) |
| SPLITTER CYLINDER | Custom 3" x 18" Stroke |
| SPLITTER FORCE | 21,195 @ 3000 psi |
| SPLITTING WEDGE | 2-way or 4-way |
| IN-FEED | Sliding Trough Carries Log to Wedge |
| MOUNTING | Universal Quick Attach SAE Spec J2513 |



Made In Northern Minnesota