

HWP-120 Firewood Processor

HWP-120



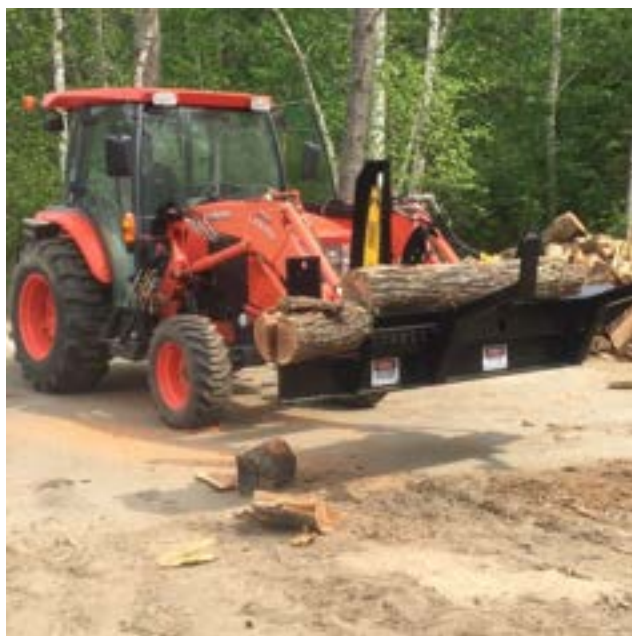
Perfect for residential and farm use, the HWP-120 Firewood Processors truly makes the job hassle-free. When attached to a skid steer or other machine, it enables one person to easily and efficiently perform wood cutting and splitting tasks. All from the comfort of the cab. Take the processor to the wood, instead of having to bring the wood to the processor. The mobility and efficiency of these Firewood Processors is a time saver!





HWP-120 Firewood Processor

Specifications HWP-120



SPECS	VALVE
LENGTH	Travel= 99" (251 cm) Working= 121" (307 cm)
WIDTH	55" (140 cm)
HEIGHT	51" (130 cm)
WEIGHT	1280 lbs. (581 kg)
MATERIAL	1/4" Steel
MINIMUM PRESSURE	2850 (196 bar)
FLOW	14-20 gpm (53 - 76 l/min)
CONNECTIONS	1-Pressure, 1-Return 1-Case Drain
MAX LOG DIAMETER	15" (38 cm)
MAX LOG LENGTH	12' (3.66 m)
MIN LOG LENGTH	4' (1.21 m)
FIREWOOD CUT LENGTH	Up to 22" (56 cm)
SAW BAR	25" (64cm) Harvester
SAW CHAIN	78 DL .404 pitch/18HX Series
SAW MOTOR	Bent Axis Piston
SAW OILER	Automatic 2 Qt (1.89 l) Tank
MAX SAW CUT	15" (38 cm)
SPLITTER CYLINDER	Standard 3.5" x 24" Stroke
SPLITTER FORCE	28,850 @ 3000 psi
SPLITTING WEDGE	4-way or 6-way Manually Adjustable
IN-FEED	Sliding Trough Carries Log to Wedge
MOUNTING	Universal Quick Attach SAE Spec J2513



Made in Northern Minnesota