

# Hydraulic Power Unit (HPU)

## HWP-HPU

The HWP-HPU was designed with Halverson Wood Products' hydraulically driven attachments in mind. This industrial built auxiliary hydraulic unit allows you to add hydraulic horsepower to tractors that do not have enough of their own. This will expand the versatility and value of your tractor.

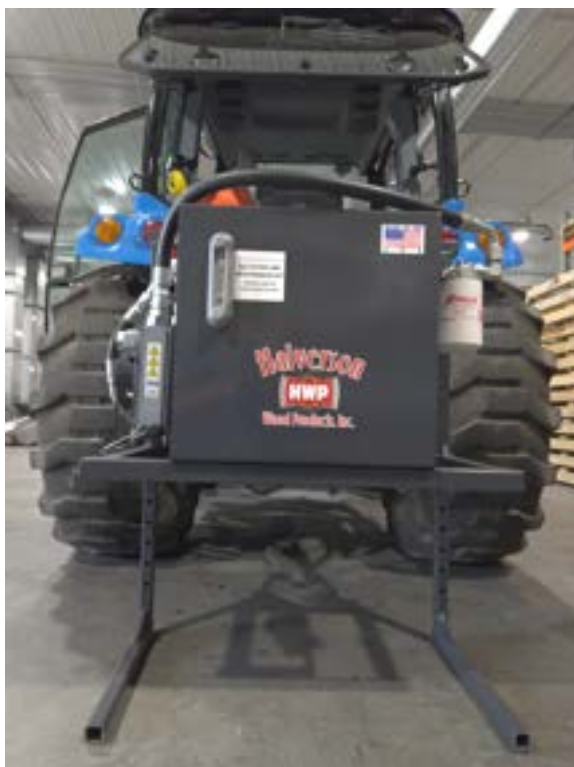


# Hydraulic Power Unit (HPU)

## Specifications HWP-HPU



SPECS	VALUE
Fluid Capacity	25 US Gallon
Dimensions	34.25" x 30.25" x 20"
Pump Flow Rate	21.2 GPM
Pump Max	2,500 PSI
Pump PTO Speed	540 RPM
Hydraulic Cooler	50 GPM
Pressure Relief Valve	2,400 PSI
Hydraulic Cooler Fan & Wiring	12 Volt
Thermostat	Max 185°F (85°C)
3-Point Hitch Categories	0, 1, & 2
3/4" Connectors	
Filter Assembly & Filter	
Adjustable Legs	



Made in Northern Minnesota