

HWP-100 Firewood Processor

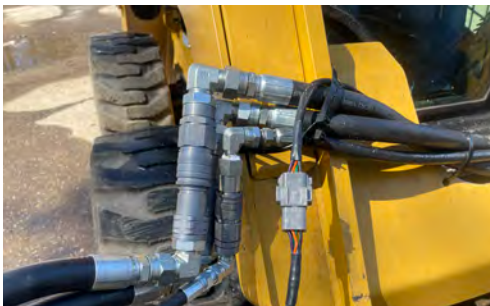
HWP-100

Perfect for residential and farm use, the HWP-100 Firewood Processors truly make the job hassle-free. The lighter weight processor allows you to operate on tractors, excavators, mini skid steers and some mini skid loaders.



Take the processor to the wood, instead of the wood to the processor!

Attach and detach with ease!!



All from the comfort of the cab, one person can easily and efficiently perform wood cutting and splitting tasks. The mobility and efficiency of these Firewood Processors are time savers!



HWP-100 Firewood Processor

HWP-100 Specifications



SPECS	VALUE
LENGTH	Travel= 80" (203 cm) Working= 100 (254 cm)
WIDTH	41" (104 cm)
HEIGHT	41" (104 cm)
WEIGHT	706 lbs (320 kg)
MATERIAL	3/16" Steel
MINIMUM PRESSURE	2800 (193 bar)
FLOW	10-15 gpm (39 - 57 l/min)
CONNECTIONS	1-Pressure, 1-Return
MAX LOG DIAMETER	14" (37 cm)
MAX LOG LENGTH	10' (3.05 m)
MIN LOG LENGTH	4' (1.22 m)
FIREWOOD CUT LENGTH	Up to 16" (33cm - 38 cm)
SAW BAR	18" (64 cm) Versacut
SAW CHAIN	68 DL 3/8 pitch 0.58
SAW MOTOR	Gear
SAW OILER	Automatic 2 Qt (1.89 l) Tank
MAX SAW CUT	14" (37 cm)
SPLITTER CYLINDER	Custom 3" x 18" Stroke
SPLITTER FORCE	21,195 @ 3000 psi
SPLITTING WEDGE	2-way or 4-way
IN-FEED	Sliding Trough Carries Log to Wedge
MOUNTING	Universal Quick Attach SAE Spec J2513



Made In Northern Minnesota



HWP-120 Firewood Processor

HWP-120

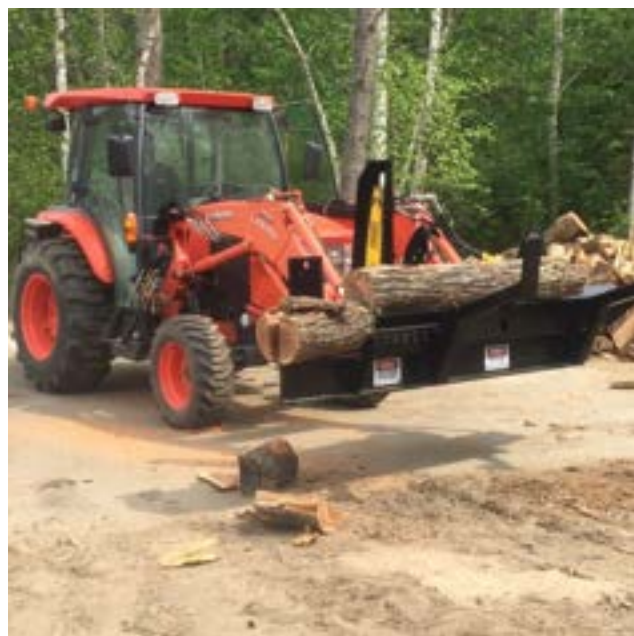


Perfect for residential and farm use, the HWP-120 Firewood Processors truly makes the job hassle-free. When attached to a skid steer or other machine, it enables one person to easily and efficiently perform wood cutting and splitting tasks. All from the comfort of the cab. Take the processor to the wood, instead of having to bring the wood to the processor. The mobility and efficiency of these Firewood Processors is a time saver!



HWP-120 Firewood Processor

Specifications HWP-120



SPECS	VALVE
LENGTH	Travel= 99" (251 cm) Working= 121" (307 cm)
WIDTH	55" (140 cm)
HEIGHT	51" (130 cm)
WEIGHT	1280 lbs. (581 kg)
MATERIAL	1/4" Steel
MINIMUM PRESSURE	2850 (196 bar)
FLOW	14-20 gpm (53 - 76 l/min)
CONNECTIONS	1-Pressure, 1-Return 1-Case Drain
MAX LOG DIAMETER	15" (38 cm)
MAX LOG LENGTH	12' (3.66 m)
MIN LOG LENGTH	4' (1.21 m)
FIREWOOD CUT LENGTH	Up to 22" (56 cm)
SAW BAR	25" (64cm) Harvester
SAW CHAIN	78 DL .404 pitch/18HX Series
SAW MOTOR	Bent Axis Piston
SAW OILER	Automatic 2 Qt (1.89 l) Tank
MAX SAW CUT	15" (38 cm)
SPLITTER CYLINDER	Standard 3.5" x 24" Stroke
SPLITTER FORCE	28,850 @ 3000 psi
SPLITTING WEDGE	4-way or 6-way Manually Adjustable
IN-FEED	Sliding Trough Carries Log to Wedge
MOUNTING	Universal Quick Attach SAE Spec J2513



Made in Northern Minnesota



HWP-140B Firewood Processor

HWP-140B

Perfect for light commercial and residential use, the HWP-140B Firewood Processors truly makes the job hassle-free. When attached to a skid steer or other machine, it enables one person operating it to easily and efficiently perform wood cutting and splitting tasks. All from the comfort of the cab. Take the processor to the wood, instead of having to bring the wood to the processor! The mobility and efficiency of these Firewood Processors is a time saver!

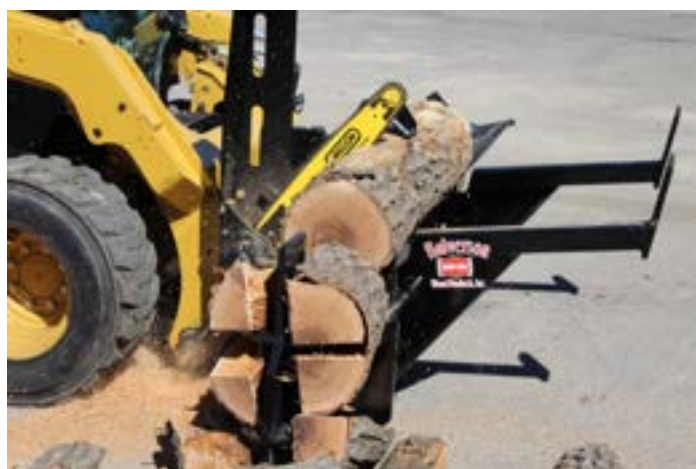


The HWP-140B also comes in a Left Handed model to allow the operator better visibility with certain machines.



HWP-140B Firewood Processor

Specifications HWP-140B



SPECS	VALUE
LENGTH	Travel= 102" (259 cm) Working= 126" (320 cm)
WIDTH	55" (140 cm)
HEIGHT	51" (130 cm)
WEIGHT	1450 lbs. (658 kg)
MATERIAL	3/8" Steel
MINIMUM PRESSURE	2850 (196 bar)
FLOW	15-20 gpm (57 - 76 l/min)
CONNECTIONS	1-Pressure, 1-Return 1-Case Drain
MAX LOG DIAMETER	18" (46 cm)
MAX LOG LENGTH	12' (3.66 m)
MIN LOG LENGTH	4' (1.21 m)
FIREWOOD CUT LENGTH	Up to 22" (56 cm)
SAW BAR	25"(64cm) Harvester
SAW CHAIN	78 DL .404 pitch/18HX Series
SAW MOTOR	Bent Axis Piston(Industrial)
SAW OILER	Automatic 2 Qt (1.89 l) Tank
MAX SAW CUT	18" (46 cm)
SPLITTER CYLINDER	Custom 3.5" x 24" Stroke
SPLITTER FORCE	28,850 @ 3000 psi
SPLITTING WEDGE	4-way or 6-way Manually Adjustable
IN-FEED	Sliding Trough Carries Log to Wedge
MOUNTING	Universal Quick Attach SAE Spec J2513
MEASURING	Manual Moveable Device



Made in Northern Minnesota

HWP- 150 Firewood Processor

HWP-150

Perfect for commercial use, the HWP-150 truly makes the job hassle-free. When attached to a skid steer or other machine, it enables one person operating it to easily and efficiently perform wood cutting and splitting tasks. All from the comfort of the cab. Take the processor to the wood, instead of having to bring the wood to the processor! The mobility and efficiency of these Firewood Processors is a time saver!



The HWP-150 also comes in a Left Handed model to allow the operator better visibility with certain machines.



HWP-150 Firewood Processors

Specifications HWP-150

SPECS	VALUE
LENGTH	Travel= 107" (272 cm) Working= 129" (328 cm)
WIDTH	58" (147 cm)
HEIGHT	57" (145 cm)
WEIGHT	1638 lbs. (743 kg)
MATERIAL	3/8" Steel
MINIMUM PRESSURE	2850 (196 bar)
FLOW	15-20 gpm (57 - 76 l/min)
CONNECTIONS	1-Pressure, 1-Return 1-Case Drain
MAX LOG DIAMETER	22" (56 cm)
MAX LOG LENGTH	12' (3.66 m)
MIN LOG LENGTH	4' (1.21 m)
FIREWOOD CUT LENGTH	Up to 22" (56 cm)
SAW BAR	31" (80cm) Harvester
SAW CHAIN	93 DL .404 pitch/18HX Series
SAW MOTOR	Bent Axis Piston(Industrial)
SAW OILER	Automatic 2 Qt (1.89 l) Tank
MAX SAW CUT	22" (56 cm)
SPLITTER CYLINDER	Custom 4" x 24" Stroke
SPLITTER FORCE	36,138 @ 3000 psi
SPLITTING WEDGE	4-way or 6-way Hydraulically Adjustable
IN-FEED	Sliding Trough Carries Log to Wedge
MOUNTING	Universal Quick Attach SAE Spec J2513
MEASURING	Manual Moveable Device



Made in Northern Minnesota



HWP-150 Extended Firewood Processor

HWP-150 EXT

Perfect for commercial use, the HWP-150 EXT truly makes the job hassle-free. When attached to a skid steer or other machine, it enables one person operating it to easily and efficiently perform wood cutting and splitting tasks. All from the comfort of the cab. Take the processor to the wood, instead of having to bring the wood to the processor! The mobility and efficiency of these Firewood Processors is a time saver!





HWP-150 Extended Firewood Processor

Specifications HWP-150 EXT



Made in Northern Minnesota

SPECS	VALUE
LENGTH	Travel= 121" (307 cm) Working= 143" (363 cm)
WIDTH	58" (147 cm)
HEIGHT	57" (145 cm)
WEIGHT	1905 lbs. (864 kg)
MATERIAL	3/8" Steel
MINIMUM PRESSURE	2850 (196 bar)
FLOW	15-20 gpm (57 - 76 l/min)
CONNECTIONS	1-Pressure, 1-Return 1-Case Drain
MAX LOG DIAMETER	22" (56 cm)
MAX LOG LENGTH	12' (3.66 m)
MIN LOG LENGTH	4' (1.21 m)
FIREWOOD CUT LENGTH	Up to 33" (84 cm)
SAW BAR	31" (80cm) Harvester
SAW CHAIN	93 DL .404 pitch/18HX Series
SAW MOTOR	Bent Axis Piston(Industrial)
SAW OILER	Automatic 2 Qt (1.89 l) Tank
MAX SAW CUT	22" (56 cm)
SPLITTER CYLINDER	Custom 4" x 36" Stroke
SPLITTER FORCE	36,138 @ 3000 psi
SPLITTING WEDGE	4-way or 6-way Hydraulically Adjustable
IN-FEED	Sliding Trough Carries Log to Wedge
MOUNTING	Universal Quick Attach SAE Spec J2513
MEASURING	Manual Moveable Device

HWP-125 Grapple Saw

HWP-125 GS

The HWP-125 Grapple Saw is perfect for: cutting outdoor boiler wood, storm clean up; cutting large diameter logs, and more! When attached to a skid steer or other machine, it allows one person operating to cut wood easily and efficiently from the comfort of the cab.



HWP-125GS Grapple Saw

Specifications **HWP-125GS**



Made in Northern Minnesota

SPECS	VALUES
LENGTH	33" (84 cm)
WIDTH	46" (142 cm)
HEIGHT	41" (104 cm)
WEIGHT	770 lbs. (349 kg)
MATERIAL	3/8" & 5/8" Steel
MINIMUM PRESSURE	2850 (196 bar)
FLOW	15-20 gpm (57 - 76 l/min)
CONNECTIONS	1-Pressure, 1-Return 1-Case Drain
MAX LOG DIAMETER	27" (69 cm)
SAW BAR	31" (80cm) Harvester
SAW CHAIN	93 DL .404 pitch/18HX Series
SAW MOTOR	Bent Axis Piston(Industrial)
SAW OILER	Automatic 2 Qt (1.89 l) Tank
MAX SAW CUT	27" (69cm)
IN-FEED	Grapple
MOUNTING	Universal Quick Attach SAE Spec J2513





HWP-200 Grapple Saw

HWP-200GS

The HWP-200 Grapple Saw is perfect for: cutting outdoor boiler wood, storm clean up; cutting large diameter logs, and more! When attached to a skid steer or other machine, it allows one person operating to cut wood easily and efficiently from the comfort of the cab.



HWP-200 Grapple Saw

Specifications HWP-200GS



SPECS	VALUES
OPENING	37.5" (95.25 cm)
LENGTH	48" (122 cm)
WIDTH	33" (84 cm)
HEIGHT	42" (107 cm)
WEIGHT	885 lbs. (401 kg)
MATERIAL	3/8" & 5/8" Steel
MINIMUM PRESSURE	2850 (196 bar)
FLOW	15-20 gpm (57 - 76 l/min)
CONNECTIONS	1-Pressure, 1-Return 1-Case Drain
MAX LOG DIAMETER	27" (69 cm)
SAW BAR	31" (80cm) Harvester
SAW CHAIN	93 DL .404 pitch/18HX Series
SAW MOTOR	Bent Axis Piston (Industrial)
SAW OILER	Automatic 2 Qt (1.89 l) Tank
MAX SAW CUT	27" (69cm)
IN-FEED	Grapple
MOUNTING	Universal Quick Attach SAE Spec J2513



Made in Northern Minnesota

Hydraulic Power Unit (HPU)

HWP-HPU

The HWP-HPU was designed with Halverson Wood Products' hydraulically driven attachments in mind. This industrial built auxiliary hydraulic unit allows you to add hydraulic horsepower to tractors that do not have enough of their own. This will expand the versatility and value of your tractor.

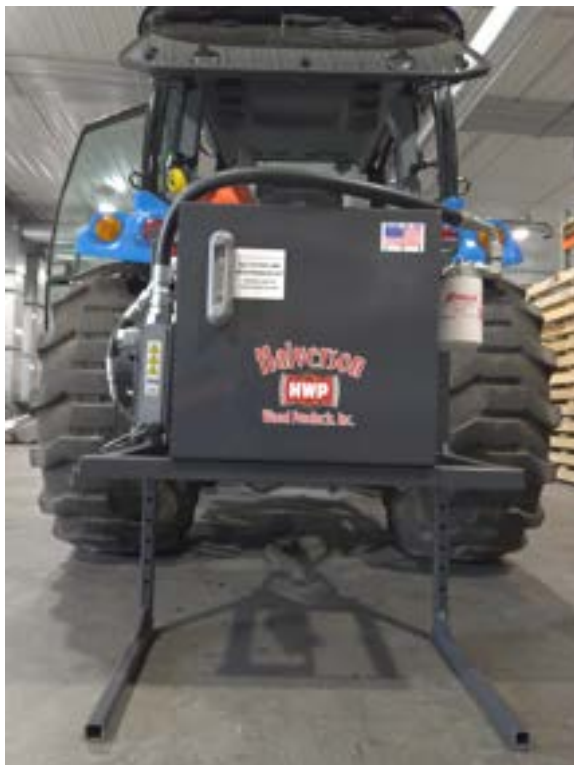


Hydraulic Power Unit (HPU)

Specifications HWP-HPU



SPECS	VALUE
Fluid Capacity	25 US Gallon
Dimensions	34.25" x 30.25" x 20"
Pump Flow Rate	21.2 GPM
Pump Max	2,500 PSI
Pump PTO Speed	540 RPM
Hydraulic Cooler	50 GPM
Pressure Relief Valve	2,400 PSI
Hydraulic Cooler Fan & Wiring	12 Volt
Thermostat	Max 185°F (85°C)
3-Point Hitch Categories	0, 1, & 2
3/4" Connectors	
Filter Assembly & Filter	
Adjustable Legs	



Made in Northern Minnesota

HWP-100TR-D

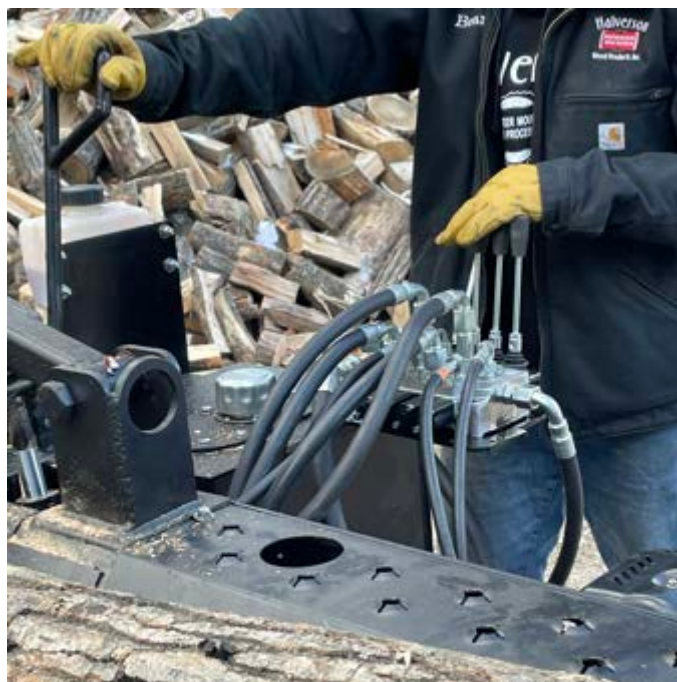
HWP-100TR-Duromax

Perfect for residential and farm use the HWP-100TR-D Firewood Processor truly makes the job hassle-free. Hook up to a 2 inch ball and take the processor to the wood instead of the wood to the processor. The mobility and efficiency of the Firewood Processor is a true time saver!



HWP-100TR-D

Specifications HWP-100TR-D



SPECS	VALUE
LENGTH	Travel= 126" (320 cm) Working= 96" (244 cm)
WIDTH	68" (172 cm)
HEIGHT	64" (162.5 cm)
WEIGHT	1260Lbs. lbs (572 kg)
MATERIAL	3/16" Steel
MAX LOG DIAMETER	14" (37 cm)
MAX LOG LENGTH	8' (2.44 m)
MIN LOG LENGTH	4' (1.22 m)
FIREWOOD CUT LENGTH	Up to 16" (33cm - 38 cm)
SAW BAR	18" (64 cm) Versacut
SAW CHAIN	68 DL 3/8 pitch 0.58
SAW MOTOR	Gear
SAW OILER	Automatic 2 Qt (1.89 l) Tank
MAX SAW CUT	14" (37 cm)
SPLITTER CYLINDER	Custom 3.5" x 18" Stroke
SPLITTER FORCE	21,195 @ 2600 psi
SPLITTING WEDGE	2-way or 4-way
IN-FEED	Sliding Trough Carries Log to Wedge
TIRE SIZE	4.8-12
MOUNTING	2" Ball
MOTOR	DuroMax 420CC
FUEL CAPACITY (GAS)	1.75 Gal
OIL CAPACITY	37.2 FL OZ
RPM	3600
PUMP	High Low
GPM	16



Made in Northern Minnesota

HWP-100TR-H

HWP-100TR-Honda

Perfect for residential and farm use the HWP-100TR-H Firewood Processor truly makes the job hassle-free. Hook up to a 2 inch ball and take the processor to the wood instead of the wood to the processor. The mobility and efficiency of the Firewood Processor is a true time saver!



HWP-100TR-H

Specifications HWP-100TR-H



SPECS	VALUE
LENGTH	Travel= 126" (320cm) Working= 96" (244 cm)
WIDTH	68" (172 cm)
HEIGHT	64" (162.5 cm)
WEIGHT	1405 Lbs. lbs (637 kg)
MATERIAL	3/16" Steel
MAX LOG DIAMETER	14" (37 cm)
MAX LOG LENGTH	8' (2.44 m)
MIN LOG LENGTH	4' (1.22 m)
FIREWOOD CUT LENGTH	Up to 16" (33cm - 38 cm)
SAW BAR	18" (64 cm) Versacut
SAW CHAIN	68 DL 3/8 pitch 0.58
SAW MOTOR	Gear
SAW OILER	Automatic 2 Qt (1.89 l) Tank
MAX SAW CUT	14" (37 cm)
SPLITTER CYLINDER	Custom 3.5" x 18" Stroke
SPLITTER FORCE	21,195 @ 2600 psi
SPLITTING WEDGE	2-way or 4-way
IN-FEED	Sliding Trough Carries Log to Wedge
TIRE SIZE	4.8-12
MOUNTING	2" Ball
MOTOR	GX630 Honda 20.8 hp 1" Keyed Shaft
FUEL CAPACITY (GAS)	1.5 Gal
OIL CAPACITY	15 Gal
RPM	3600
PUMP	Honor Gear Pump
GPM	16
HYDRAULIC FILTER	Spin On



Made in Northern Minnesota



The Bale Buddy 2000 was designed to allow hay to be baled while there is up to 60% moisture in the hay.

When the weather is uncooperative, this will save time waiting for the hay to dry and product with less hay spoilage.

Bale Buddy 2000 Specs



Made in Northern Minnesota

SPECS	VALUE
LENGTH	72" (183cm)
WIDTH	40" (102cm) BASE 104" (264cm) TOP
HEIGHT	90" (229cm)
WEIGHT	853 lbs. (382 kg)
BALE SIZE	4x5 or 5x6
CONNECTIONS	14 Pin
WRAP	Standard Film Wrap
HYDRAULICS	Auxillary Hydraulics