



STRENGTH

DESIGN



INNOVATION



Grass Handling Range

MANUFACTURERS OF QUALITY MACHINERY ATTACHMENTS
FOR AGRICULTURAL AND CONSTRUCTION SECTOR

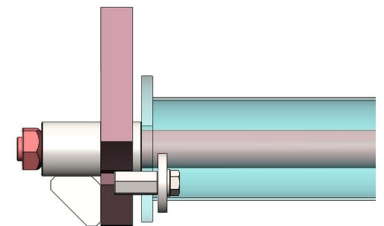


Bale Handler

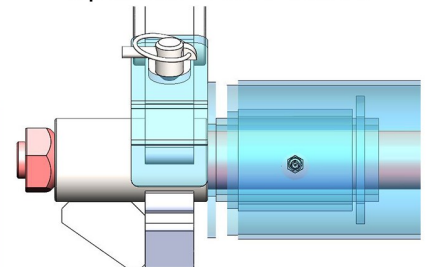
The Prodig Bale Handler is designed and manufactured for reliability and extremely long service life. The unit is manufactured with high operator visibility, the main legs are engineered and fabricated from High Yield plate combined with large diameter quick release rollers make this a fast, efficient and versatile attachment that can be fitted to tractor, telehandler or articulated loader.

- Hydraulic bale handler for quick and efficient moving and stacking of bales.
- Large diameter 115mm rollers reduce plastic stress and ensure safe handling of wrapped bales.
- Heavy duty legs fabricated using Hardox plate and heavy wall tine bush for long life.
- 1250mm stone fork tines as standard.
- Bushings and grease points on all pivot points.
- Oversize hydraulic ram means the handler can easily rip bales apart in feeding season.
- Open centers 1575mm, closed centers 815mm.
- Uniquely designed bale handler means it is suitable for both tractors and telehandlers.
- Bolt on hitches available to fit all machines.
- Optional unique locking system on the tubes means removal takes seconds, without tools.
- The best tube roller system on the market for free spinning greasable tubes.

Standard Tubes



Optional Roller Tubes



Bale Handler

BH 500	
Height (mm)	600 (main frame)
Width (mm)	1235
Depth (mm)	306 (depth of main frame) 1490 (depth of full assembly)
Weight (kg)	183 (including roller tubes)
Open centres (mm)	1575
Closed centres (mm)	815

All of our attachments are designed to operate at 200 BAR hydraulic pressure. Machines operating above 200 BAR will require a relief valve.



Bale Grab

The Prodig Bale Grab is an extremely robust unit for moving bales with minimal damage to the plastic wrap. The unit is suitable for tractor, telehandler and articulated loader.

- Hydraulic bale grab for quick and efficient moving and stacking of bales.
- Wrap damage is eliminated by our tubular arms covering a large area of the wrapped bales.
- Arms can be locked in multiple positions on either side for stacking purposes.
- The grab allows for stacking bales on their end or on their side.
- Excellent width capabilities from 1870mm to 413mm.
- Can handle round or small square bales for loading or unloading.
- The frame depth is kept at a minimum so the bale sits closer to the machine.
- Bushings and grease points on all pivot points.
- Bolt on hitches available to fit all machines.
- Optional add-on check valve available for constant grip and safety.

Optional check valve



BALE GRAB

Height (mm)

Width (mm)

Depth (mm)

Weight (kg)

Open centres(mm)

Closed centres(mm)

All of our attachments are designed to operate at 200 BAR hydraulic pressure. Machines operating above 200 BAR will require a relief valve.

BG 500

700 Height of paddle

415 Height of frame

1384

216 Depth of main frame

1370 Depth of full assembly

171

1870

413



Bale Stacker

The Prodig Bale Stacker is an attachment designed to increase efficiency when handling large numbers of round and square bales with units available to suit tractor loader, telehandler and wheel loader.

- Hydraulic grab for moving and stacking large square and round bales.
- Available in two models, C320 - for handling 3qty 900X1200mm or 2qty round bales. C430 - for handling 4qty 900X1200mm or 3qty round bales.
- Removable bottom tine bar which can be floating, or fixed up or down as standard with the option of hydraulic folding.
- Curved Hardox tines in arm spaced to catch all bale types.
- Double hydraulic cylinder system with no troublesome linkage bars.
- Top push bar with height adjustment to stabilize the stack when retracting bottom tines.
- Heavy duty construction using structural grade section and high yeild plate throughout.
- Greasable hinge points throughout.
- Robust locking system on bottom bar allows it to be removed easily.
- Bolt on hitches available to fit all machines.

Bale Stacker

Height (mm)

C320

2080

C430

2750

Width (mm)

1840 when opened

1840 when opened

Depth (mm)

715 when closed

715 when closed

Capacity

3(900mm)square bales
or 2 round bales

4 (900mm)square bales
or 3 round bales

Weight (kg)

561 including bottom bar
456 excluding bottom bar

654 including bottom bar
537 excluding bottom bar

Hydraulic Cylinders

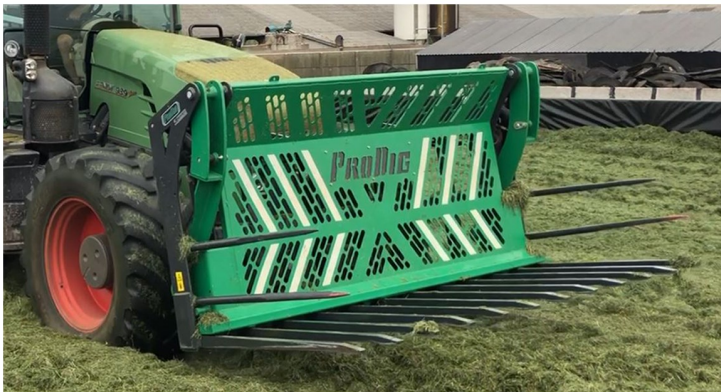
2 x 70mm Bore

2 x 70mm Bore

All of our attachments are designed to operate at 200 BAR hydraulic pressure.
Machines operating above 200 BAR will require a relief valve.



Push Off Grass Fork



Push Off Grass Forks

The Prodig Push Off Grass Fork is designed to quickly and efficiently handle high volumes of grass silage on large horsepower tractors, telehandlers and wheeled loaders.

- Designed for use on large tractors & loaders.
- Heavy duty construction using high yield structural hollow sections and plates.
- Available in widths from 2.5m to 4.0m with Hardox or KV type tines
- 1400mm square profile Hardox tines used in bottom bar for long service life. Our full range of Hardox tines are manufactured incorporating a replaceable wear tip meaning the tine never has to be replaced.
- 40mm pivot point pins fitted with greasable bushings.
- Full length hardened cutting edge wear plates on bottom section.
- Fitted with hydraulic flow divider valve and buffer pads to reduce impact on gate.
- Bolt on frame can be fitted with 3pt Linkage (CAT 2, 3 or 4) or loader brackets
- Greasable bushings on all pivot points.
- Optional extras: Lighting kit -(no:2 front facing work lights & transport front & rear facing side markers lights) or (transport front & rear facing side markers lights), Bolt on 3pt linkage or bracket options, colour options, gate lock.

Push Off Grass Forks	POGF 2500	POGF 2750	POGF 3000	POFG 3300	POGF 3600	POGF 4000
Height (mm)	1475	1475	1475	1475	1475	1475
Width (mm)	2500 (8ft)	2750 (9ft)	2995 (10ft)	3300 (11ft)	3600 (12ft)	4000 (13ft)
Depth (mm)	1420	1420	1420	1420	1420	1420
Weight (kg)	1150*	1220*	1285*	1360*	1420*	1525*
Tine length	1400mm (55")	1400mm (55")	1400mm (55")	1400mm (55")	1400mm (55")	1400mm (55")
Number of Tines	10	11	12	13	14	16
Tine Spacing(mm)	230	230	230	230	230	220
Hydraulic cylinder	2 x 70mm Bore	2 x 70mm Bore	2 x 70mm Bore	2 x 70mm Bore	2 x 70mm Bore	2 x 70mm Bore

All of our attachments are designed to operate at 200 BAR hydraulic pressure.
Machines operating above 200 BAR will require a relief valve.
*Weight shown is for bolt on frame (no brackets) & Hardox tines.



Mammoth Folding Fork



Mammoth Folding Fork

The Prodigy Mammoth Folding Fork is designed and built to handle the increased output from a new generation of large capacity loading shovels. Our fork is designed to withstand the rigorous demands of today's busy contractor with clever designs to reduce down time.

- Designed for use on large wheel loaders.
- Heavy duty construction using high yield structural hollow section and plate.
- Available in widths from 3.6 meters (12ft) to a massive 5.5 meters (18ft).
- 1830mm (6ft) X 50mm Hardox tines as standard with optional 2100mm (7ft) long tines available.
- Our Hardox tines are made incorporating a replaceable wear tip meaning the tine never has to be replaced.
- 80mm pivot point pin fitted with replaceable hardened steel bushings.
- Hardox wear plate fitted to the full length of the bottom section.
- Fitted with hydraulic check valve for road safety & to increase pivot point lifespan.
- Double acting cushioned hydraulic cylinder on each wing.
- Incorporates a unique wing locking system when open which absorbs the stress and strain which would otherwise be all loaded on the pivot pin.
- Fitted with a spill frame with removable center for Z-linkage loaders.
- Greasable bushings on all pivot points.
- Optional extras: Lighting kit -(no:2 front facing work lights), colour options, transport tine guard, hydraulic flow divider valve.

Mammoth	Mammoth 36	Mammoth 42	Mammoth 49	Mammoth 55
Height (mm)	1750	1750	1750	1750
Width Open (mm)	3658mm (12ft)	4268mm (14ft)	4876mm (16ft)	5485mm (18ft)
Width Closed (mm)	2890mm (9ft5")	2890mm (9ft5")	2890mm (9ft5")	2890mm (9ft5")
Depth (mm)	2010	2010	2010	2010
Weight (kg)	1675*	1835*	1990*	2150*
Tine length (standard)	1830mm (6ft)	1830mm (6ft)	1830mm (6ft)	1830mm (6ft)
Tine width	50mm Hardox	50mm Hardox	50mm Hardox	50mm Hardox
Number of bottom Tines	14	16	18	20
Tine Spacing (mm)	227	227	227	227
Ram	2 x 75mm Bore	2 x 75mm Bore	2 x 75mm Bore	2 x 75mm Bore

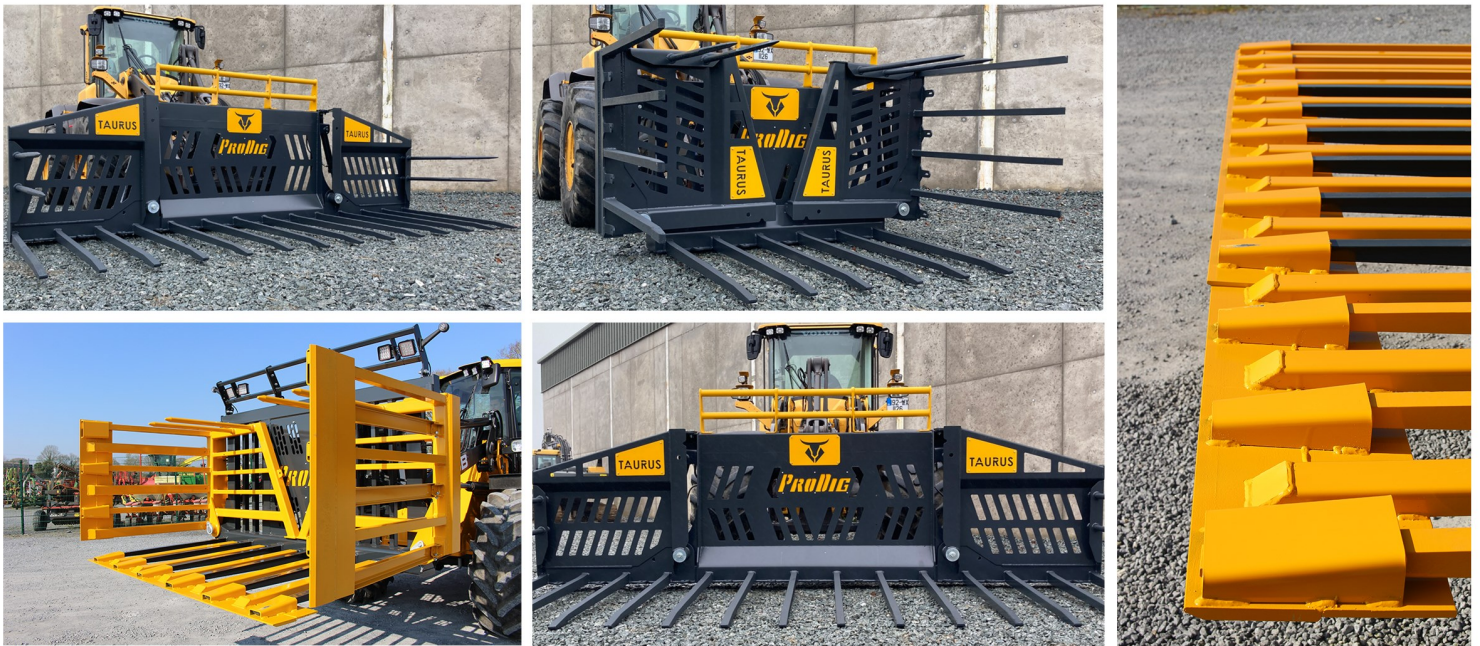
*Weights shown are for the fork complete with a bolt on frame (no brackets)

All of our attachments are designed to operate at 200 BAR hydraulic pressure.

Machines operating above 200 BAR will require a relief valve.



Taurus Folding Fork



Taurus Folding Fork

The Prodig Taurus Folding Fork is built with the same strength and durability as our Mammoth folding fork but is designed for continental conditions with longer drier grass and large quantities of maize silage.

- The fork is fitted with wider tine spacing than our standard folding fork. This is to help longer, dryer grass silage to flow through the fork, making it easier to disperse on the pit.
- During maize season, the fork can then be fitted with a bolt on maize blade and tine infills which allows the fork to carry, disperse and level maize silage with ease.
- Available in widths from 3.6 meters (12ft) to 5.5 meters (18ft)
- 1830mm (6ft) X 50mm Hardox tines as standard with optional 2100mm (7ft) long tines available.
- Our Hardox tines are made incorporating a replaceable wear tip meaning the tine never has to be replaced.
- Incorporates a unique wing locking system when open which absorbs the stress and strain which would otherwise be all loaded on the pivot pin.
- Fitted with a hydraulic check valve & ram cushioning which assists with prolonging pin and bushing lifespan.
- 80mm pivot pin fitted with replaceable hardened steel bushings.
- Hardox wear plate fitted to the full length of the bottom section.
- Optional extras: Lighting kit - (no:2 front facing work lights), colour options, transport tine guard, maize blade, hydraulic flow divider valve.

Taurus	Taurus 36	Taurus 42	Taurus 49	Taurus 55
Height (mm)	1750	1750	1750	1750
Width Open (mm)	3658mm (12ft)	4268mm (14ft)	4876mm (16ft)	5485mm (18ft)
Width Closed (mm)	2890mm (9ft5")	2890mm (9ft5")	2890mm (9ft5")	2890mm (9ft5")
Depth (mm)	2010	2010	2010	2010
Weight (kg)	1520*	1685*	1850*	2000*
Tine length	1830mm (6ft)	1830mm (6ft)	1830mm (6ft)	1830mm (6ft)
Tine width	50mm Hardox	50mm Hardox	50mm Hardox	50mm Hardox
Number of bottom tines	10	12	14	16
Tine spacing (mm)	328	328	328	328
Hydraulic cylinder	2 x 75mm Bore	2 x 75mm Bore	2 x 75mm Bore	2 x 75mm Bore

*Weights shown are for the fork complete with a bolt on frame (no brackets)

All of our attachments are designed to operate at 200 BAR hydraulic pressure.

Machines operating above 200 BAR will require a relief valve.



Grass Fork & Contractor Grass Fork



Grass Fork (GF)

The ProDig Grass Fork is designed to utilise smaller machines when handling grass or maize silage such as tractor loader, tele-handler or small articulated loader.

- Designed for farmers utilising their own machinery for maize and silage.
- Available in widths from 2.2m to 3m.
- Heavy duty fork back with vision windows to view outer tines when loading.
- 1250mm x 25mm square profile Hardox tines used in bottom bar for long service life.
- Our Hardox tines are made incorporating a replaceable wear tip meaning the tine never has to be replaced.
- Engineered and fabricated bottom section for superior structural strength and rigidity.
- Also available with 1250mm forged stone fork tines in steel bushes.
- Top spill frame as standard on all grass forks to increase volume and prevent spillage onto the loader.
- Bolt on or welded hitch system to suit all machines.



Contractor Grass Fork (CF)

The ProDig Contractor Grass Fork is designed for large and medium wheeled loaders and large telehandlers handling grass silage in compact areas or with lower volumes.

- Designed for use on articulated loaders.
- Available in widths from 2.5m to 3.6m.
- Heavy duty construction using high yield structural hollow section and plate.
- 1400mm x 40mm square profile Hardox tines used in bottom bar for long service life.
- Our full range of Hardox tines are manufactured incorporating a replaceable wear tip meaning the tine never has to be replaced.
- Bottom wear pads made from 400 Brinell cutting edge.
- Full width spill frame to increase capacity and prevent spillage of material onto the loader.
- Hitches available to suit all machines.
- Optional extras: double side tines, bolt on centre spill frame for z-linkage, transport tine guard.

Grass Fork	GF2200	GF2500	GF2700	GF3000	CF 2500	CF 2750	CF 3000	CF 3300	CF 3600
Height (mm)	1150	1150	1150	1150	1415	1415	1415	1415	1485
Width (mm)	2200	2500	2700	3000	2500	2750	2995	3300	3600
Depth (mm)	1300	1300	1300	1300	1470	1470	1470	1470	1470
Weight (kg)	310	350	365	380	570	620	670	720	770
Tine length(mm)	1240 (48")	1240 (48")	1240 (48")	1240 (48")	1400(55")	1400(55")	1400(55")	1400(55")	1400(55")
Tine spacing(mm)	220	200	220	220	225	225	225	230	230
Tine thickness(mm)	25	25	25	25	40	40	40	40	40
Number of tines	10	12	12	13	10	11	12	13	14

ProDig Attachments
Newtown, Bangenalstown
Carlow, Ireland

☎ +353 (0)59 972 7494
 ☎ +353 (0)86 7809888
 ✉ sales@prodigattachments.com
 🌐 www.prodigattachments.com

Your Contact: