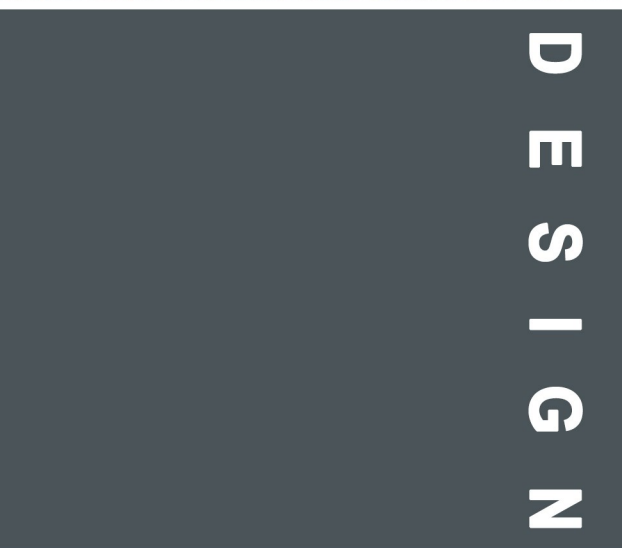




STRENGTH



DESIGN



INNOVATION



Feeding Range

MANUFACTURERS OF QUALITY MACHINERY ATTACHMENTS
FOR AGRICULTURAL AND CONSTRUCTION SECTOR



Shear Genius

The Prodig Shear Genius is the ultimate attachment for the farmer who diet feeds. This unit is a shear grab, bale splitter with plastic/net retainer and loading bucket all in one unit. This unit reduces feed waste by up to 15% and feeding time by up to 30%, making farmers more efficient, increasing profits.

- Available in widths from 1.5m to 2.5m.
- The ideal attachment for use in conjunction with a diet feeder wagon.
- Cuts clamp/pit silage, maize, whole crop, etc.
- Large capacity bucket for handling ration, concentrate, root crop etc.
- Wide opening shear to split round bales in half.
- Plastic film retainer to hold film and netting when splitting bales.
- Manufactured using Hardox plates and other high tensile steels.
- Hardened cutting edge and heat treated shear blades for superior cut and long life.
- Nickel chrome plated hydraulic rams for long life in an aggressive environment.

Shear GENIUS	GS 1500	GS 1800	GS 2200	GS 2500
Height (mm)	1046	1046	1046	1046
Width (mm)	1520	1820	2220	2520
Depth (mm)	1154	1154	1154	1154
Capacity (m ³)	1.20	1.43	1.75	2.00
Weight (kg)	720	822	920	982
Rams	2x110mm Bore	2x110mm Bore	2x110mm Bore	2x110mm Bore
Opening height (mm)	1215	1215	1215	1215

Weight includes bolt on frame for hitch. All of our attachments are designed to operate at 200 BAR hydraulic pressure. Machines operating above 200 BAR will require a relief valve.



Mega Bite

The Prodig Mega Bite is an all in one large capacity shear grab that can cut large blocks from the silage clamp/pit and split round bales while retaining the net and plastic. This unit reduces feeding time by up to 30%, making farmers more efficient and increasing profits.

- Large capacity grab in widths of 1.5m, 1.8m & 2.2m.
- The ideal attachment for use in conjunction with diet feeders.
- Cuts clamp/pit silage, maize, whole crop, etc.
- Wide opening shear to split round bales in half.
- Plastic film retainer to hold film and netting when splitting bales.
- 35mm Hardox tines use in fork base for extreme strength.
- Our full range of Hardox tines are manufactured incorporating a replaceable wear tip meaning the tine never has to be replaced
- Heat treated hardened shear blades for superior cut and long life.
- Nickel chrome plated hydraulic rams for long life in an aggressive environment

Mega Bite	MB 1500	MB 1800	MB2200
Height (mm)	1044	1044	1044
Width (mm)	1520	1820	2220
Depth (mm)	1154	1154	1154
Capacity (m ³)	1.33	1.60	1.96
Weight (kg)	691	780	885
Number of tines	10 Hardox	12 Hardox	15 Hardox
Tine spacing (mm)	121	121	121
Tine Size(mm)	35 X 885	35 X 885	35 X 885
Rams	2x110mm Bore	2x110mm Bore	2x110mm Bore
Opening height (mm)	1220	1220	1220

All of our attachments are designed to operate at 200 BAR hydraulic pressure. Machines operating above 200 BAR will require a relief valve.



Pro Slice

Stemming from the success of the Shear Genius & Megabite combination units comes the Prodig Pro Slice. Designed and manufactured using Hardox & Domex plates, heat treated hardened cutting blades and bushed pivot points, this bale splitter will outlast any other on the market.

- Compatible with 1.2m (4ft) & 1.5m (5ft) bales of Silage, Hay & Straw
- Fitted with our reliable 6 claw Plastic/Net Gripper system.
- Fitted with five 985mm (39") Heavy Duty Stonefork tines with the option of two additional tines.
- Heat treated hardened cutting blades as standard for superior cut and long life.
- Manufactured using high strength Domex and Hardox steels.
- All pivot points fitted with replaceable, greaseable bushings.
- Nickel chrome plated hydraulic rams for long life in an aggressive environment.
- Bolt on hitch brackets to suit all machines.
- Optional pressure relief valve for machines in excess of 200 Bar hydraulic pressure.

Pro Slice

Height (mm)	1063
Width (mm)	1770
Depth (mm)	1120
Weight (kg)	452
Number of tines	5 Forged
Tine length(mm)	985
Rams	2x90mm Bore

All of our attachments are designed to operate at 200 BAR hydraulic pressure. Machines operating above 200 BAR will require a relief valve.



Pro Shear

The Prodig Shear Grab is one of the strongest and most robust shear grabs on the market. It is manufactured with Hardox tines & heat treated hardened blades to reduce feed waste and down time due to breakages.

- Shear grabs available in widths from 1.3m to 2.2m.
- Fitted with 885mm Hardox tines.
- Our full range of Hardox tines are manufactured incorporating a replaceable wear tip meaning the tine never has to be replaced.
- Heat treated hardened cutting blades as standard for superior cut and long life.
- Manufactured using high tensile Domex and hard wearing Hardox steels.
- All pivot points fitted with replaceable, greaseable bushings.
- Nickel chrome plated hydraulic rams for long life in an aggressive environment.
- Bolt on hitch brackets to suit all machines.
- Optional pressure relief valve for machines in excess of 200 Bar hydraulic pressure.

Shear Grab	SG 1300 HX	SG 1500 HX	SG 1800 HX	SG 2200 HX
Height (mm)	1034	1034	1034	1034
Width (mm)	1320	1520	1820	2220
Depth (mm)	1100	1100	1100	1100
Capacity (m³)	0.92	1.06	1.28	1.56
Weight (kg)	561	603	687	793
Number of tines	9 Hardox	10 Hardox	12 Hardox	15 Hardox
Tine spacing (mm)	116	122	121	116
Tine length (mm)	885	885	885	885
Rams	2x90mm Bore	2x90mm Bore	2x100mm Bore	2x100mm Bore
Opening height (mm)	800	800	800	800

All of our attachments are designed to operate at 200 BAR hydraulic pressure.
Machines operating above 200 BAR will require a relief valve.



Heavy Duty Shear Grab



Heavy Duty Shear Grab

The Prodig Heavy Duty Shear Grab is designed for wheeled loaders and large telehandlers where high volume feeding is required. The Heavy Duty Shear Grab is one of the strongest and most robust shear grabs on the market. It is manufactured with Hardox tines & heat treated hardened blades to reduce waste and down time due to breakages.

- Shear grabs available in widths from 2.2m to 2.75m.
- Manufactured with 40mm Hardox tines.
- Hardened cutting edge and heat treated shear blades for superior cut and long life.
- High yield steel used in fabricated bottom bar on fork.
- Nickel chrome plated hydraulic rams for long life in aggressive environment.
- Bolt on hitch brackets to suit all machines.
- Optional pressure relief valve for machines in excess of 200 Bar hydraulic pressure.

Heavy Duty Shear Grab	HD-SG 2200	HD-SG 2500	HD-SG 2750
Height (mm)	1050	1050	1050
Width (mm)	2200	2500	2750
Depth (mm)	1150	1150	1150
Capacity (m ³)	2.0	2.2	2.5
Weight (kg)	1079	1175	1242
Number of tines	11 Hardox	13 Hardox	14 Hardox
Tine length (mm)	940	940	940
Rams	2x125mm Bore	2x125mm Bore	2x125mm Bore
Opening height (mm)	1015	1015	1015

All of our attachments are designed to operate at 200 BAR hydraulic pressure. Machines operating above 200 BAR will require a relief valve.



Tractor Tine Grab



Tractor Tine Grab

The ProDig Tractor Tine Grab is an extremely versatile heavy duty, robust attachment which can be used for a wide variety of applications, in the agri sector.

- Tractor tine grabs available in widths from 1.3m to 1.8m.
- Ideal for efficient handling of silage, maize, manure, bales
- 25mm thick profiled Hardox tines on grapple and fork.
- Our Hardox tines are made incorporating a replaceable wear tip meaning the tine never has to be replaced.
- Engineered and fabricated bottom section for superior structural strength and rigidity.
- Twin double acting hydraulic rams mounted on the top of the grab.
- All moving parts fitted with greasing points.

Telehandler Tine Grab

The ProDig Tele-Handler Tine Grab is an extremely versatile heavy duty, robust attachment which can be used for a wide variety of applications, including agri, waste handling and industrial sectors.

- Tine grabs available in widths from 1.5m to 2.5m.
- Ideal for efficient handling of silage, maize, manure, bales etc.
- Wide opening grab for large items and cleaning up to walls.
- Heavy duty 8mm wall box section, and 10mm plate in grapple construction.
- 25mm thick curved profiled Hardox tines on grapple.
- 25mm thick profiled Hardox tines in fork for extreme strength.
- Heavy duty fork back with vision windows to view outer tines when loading.
- Three double acting hydraulic rams in 2.2m & 2.5m models.
- All moving parts fitted with greasing points.

Tractor Tine Grab

	TTG1300	TTG1500	TTG1800
Height (mm)	830	830	830
Width (mm)	1300	1520	1766
Depth (mm)	865	865	865
Capacity (m³)	0.4	0.5	0.6
Weight (kg)	265	304	333
Number of base tines	7	8	9
Tine spacing (mm)	185	185	190
Tine length (mm)	680	680	680
Rams	2x 70mm	2x 70mm	2x 70mm
Opening height (mm)	795	795	795

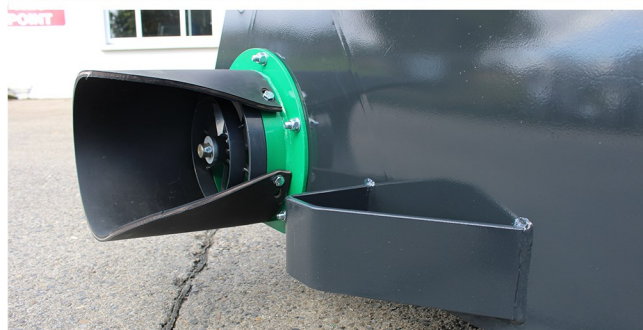
Telehandler Tine Grab

	TG1500	TG1800	TG2200	TG2500
Height (mm)	990	990	990	990
Width (mm)	1500	1800	2200	2500
Depth (mm)	1150	1150	1150	1150
Capacity (m³)	0.9	1.1	1.35	1.55
Weight (kg)	386	430	555	592
Number of base tines	8	9	11	12
Tine spacing (mm)	185	195	190	195
Tine length (mm)	920	920	920	920
Rams	2x 70mm	2x 70mm	3x 70mm	3x 70mm
Opening height (mm)	1500	1500	1500	1500

All of our attachments are designed to operate at 200 BAR hydraulic pressure. Machines operating above 200 BAR will require a relief valve. Weights include bolt on frame.



Chop 'N' Feed Bucket



Chop'N'Feed Bucket

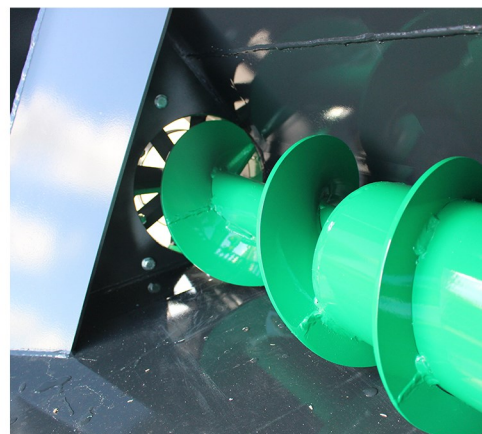
ProDig Beet Chopper and Meal Feeding Bucket is available in three sizes from 2m to 2.5m which will suit tractor loaders, telehandlers, articulated loaders & Tractor 3 Point Linkage. This versatile unit is equipped with a hydraulic motor which drives a heavy-duty auger for both chopping and feeding out so there is no need for a PTO drive. The large output on the bucket allows the bucket to unload and chop in a minimal amount of time.

- Auger motor is fitted on the rear of the bucket rather than the side to allow use in close proximity with walls.
- Easy access to all moving parts.
- Heavy duty buckets construction to allow for use on all machines.
- Bolt on hitch system mean the bucket can be mounted off centred if required.
- Hardened cutting edge and leading edge
- Available with bolt on hitch system to fit all machines
- Option of right or left-hand side chopping.
- Four minutes per cubic meter chop rate




Chop'N'Feed Bucket	CNF2000	CNF2300	CNF2500
Width of Edge (mm)	2000	2300	2500
Height (mm)	1025	1025	1025
Depth (mm)	1275	1275	1275
Capacity (m3)	1.45	1.64	1.78
Weight (kg)	615	676	725
Shell (mm)	6	6	6
Sides (mm)	6	6	6
Cutting edge (mm)	16x150	16x150	16x150

Weights include bolt on frame.



ProDig Attachments
Newtown, Bangenaltown
Carlow, Ireland

 **+353 (0)59 972 7494**
 **+353 (0)86 7809888**
 **sales@prodigattachments.com**
 **www.prodigattachments.com**

Version 01/22

Your Contact:



STRENGTH



DESIGN



INNOVATION



Grass Handling Range

MANUFACTURERS OF QUALITY MACHINERY ATTACHMENTS
FOR AGRICULTURAL AND CONSTRUCTION SECTOR

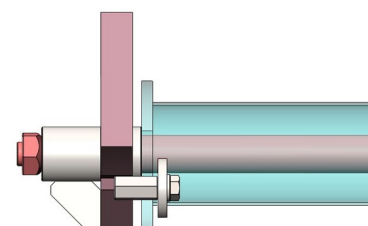


Bale Handler

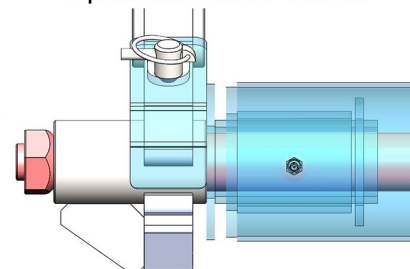
The Prodig Bale Handler is designed and manufactured for reliability and extremely long service life. The unit is manufactured with high operator visibility, the main legs are engineered and fabricated from High Yield plate combined with large diameter quick release rollers make this a fast, efficient and versatile attachment that can be fitted to tractor, telehandler or articulated loader.

- Hydraulic bale handler for quick and efficient moving and stacking of bales.
- Large diameter 115mm rollers reduce plastic stress and ensure safe handling of wrapped bales.
- Heavy duty legs fabricated using Hardox plate and heavy wall tine bush for long life.
- 1250mm stone fork tines as standard.
- Bushings and grease points on all pivot points.
- Oversize hydraulic ram means the handler can easily rip bales apart in feeding season.
- Open centers 1575mm, closed centers 815mm.
- Uniquely designed bale handler means it is suitable for both tractors and telehandlers.
- Bolt on hitches available to fit all machines.
- Optional unique locking system on the tubes means removal takes seconds, without tools.
- The best tube roller system on the market for free spinning greasable tubes.

Standard Tubes



Optional Roller Tubes



Bale Handler

Height (mm)	BH 500
Width (mm)	600 (main frame)
Depth (mm)	1235
	306 (depth of main frame)
	1490 (depth of full assembly)
Weight (kg)	183 (including roller tubes)
Open centres (mm)	1575
Closed centres (mm)	815

All of our attachments are designed to operate at 200 BAR hydraulic pressure. Machines operating above 200 BAR will require a relief valve.



Bale Grab



Bale Grab

The Prodig Bale Grab is an extremely robust unit for moving bales with minimal damage to the plastic wrap. The unit is suitable for tractor, telehandler and articulated loader.

- Hydraulic bale grab for quick and efficient moving and stacking of bales.
- Wrap damage is eliminated by our tubular arms covering a large area of the wrapped bales.
- Arms can be locked in multiple positions on either side for stacking purposes.
- The grab allows for stacking bales on their end or on their side.
- Excellent width capabilities from 1870mm to 413mm.
- Can handle round or small square bales for loading or unloading.
- The frame depth is kept at a minimum so the bale sits closer to the machine.
- Bushings and grease points on all pivot points.
- Bolt on hitches available to fit all machines.
- Optional add-on check valve available for constant grip and safety.

Optional check valve



BALE GRAB

Height (mm)

Width (mm)

Depth (mm)

Weight (kg)

Open centres(mm)

Closed centres(mm)

BG 500

700 Height of paddle

415 Height of frame

1384

216 Depth of main frame

1370 Depth of full assembly

171

1870

413

All of our attachments are designed to operate at 200 BAR hydraulic pressure. Machines operating above 200 BAR will require a relief valve.



Bale Stacker

The Prodig Bale Stacker is an attachment designed to increase efficiency when handling large numbers of round and square bales with units available to suit tractor loader, telehandler and wheel loader.

- Hydraulic grab for moving and stacking large square and round bales.
- Available in two models, C320 - for handling 3qty 900X1200mm or 2qty round bales. C430 - for handling 4qty 900X1200mm or 3qty round bales.
- Removable bottom tine bar which can be floating, or fixed up or down as standard with the option of hydraulic folding.
- Curved Hardox tines in arm spaced to catch all bale types.
- Double hydraulic cylinder system with no troublesome linkage bars.
- Top push bar with height adjustment to stabilize the stack when retracting bottom tines.
- Heavy duty construction using structural grade section and high yeild plate throughout.
- Greasable hinge points throughout.
- Robust locking system on bottom bar allows it to be removed easily.
- Bolt on hitches available to fit all machines.

Bale Stacker

Height (mm)

C320

2080

C430

2750

Width (mm)

1840 when opened

1840 when opened

Depth (mm)

715 when closed

715 when closed

Capacity

3(900mm)square bales
or 2 round bales

4 (900mm)square bales
or 3 round bales

Weight (kg)

561 including bottom bar
456 excluding bottom bar

654 including bottom bar
537 excluding bottom bar

Hydraulic Cylinders

2 x 70mm Bore

2 x 70mm Bore

All of our attachments are designed to operate at 200 BAR hydraulic pressure.
Machines operating above 200 BAR will require a relief valve.



- Designed for use on large tractors & loaders.
- Heavy duty construction using high yield structural hollow sections and plates.
- Available in widths from 2.5m to 4.0m with Hardox or KV type tines
- 1400mm square profile Hardox tines used in bottom bar for long service life. Our full range of Hardox tines are manufactured incorporating a replaceable wear tip meaning the tine never has to be replaced.
- 40mm pivot point pins fitted with greasable bushings.
- Full length hardened cutting edge wear plates on bottom section.
- Fitted with hydraulic flow divider valve and buffer pads to reduce impact on gate.
- Bolt on frame can be fitted with 3pt Linkage (CAT 2, 3 or 4) or loader brackets
- Greasable bushings on all pivot points.
- Optional extras: Lighting kit -(no:2 front facing work lights & transport front & rear facing side markers lights) or (transport front & rear facing side markers lights), Bolt on 3pt linkage or bracket options, colour options, gate lock.

Push Off Grass Forks	POGF 2500	POGF 2750	POGF 3000	POFG 3300	POGF 3600	POGF 4000
Height (mm)	1475	1475	1475	1475	1475	1475
Width (mm)	2500 (8ft)	2750 (9ft)	2995 (10ft)	3300 (11ft)	3600 (12ft)	4000 (13ft)
Depth (mm)	1420	1420	1420	1420	1420	1420
Weight (kg)	1150*	1220*	1285*	1360*	1420*	1525*
Tine lenght	1400mm (55")	1400mm (55")	1400mm (55")	1400mm (55")	1400mm (55")	1400mm (55")
Number of Tines	10	11	12	13	14	16
Tine Spacing(mm)	230	230	230	230	230	220
Hydraulic cylinder	2 x 70mm Bore	2 x 70mm Bore	2 x 70mm Bore	2 x 70mm Bore	2 x 70mm Bore	2 x 70mm Bore

*Weight shown is for bolt on frame (no brackets) & Hardox tines.



Mammoth Folding Fork



Mammoth Folding Fork

The Prodig Mammoth Folding Fork is designed and built to handle the increased output from a new generation of large capacity loading shovels. Our fork is designed to withstand the rigorous demands of today's busy contractor with clever designs to reduce down time.

- Designed for use on large wheel loaders.
- Heavy duty construction using high yield structural hollow section and plate.
- Available in widths from 3.6 meters (12ft) to a massive 5.5 meters (18ft).
- 1830mm (6ft) X 50mm Hardox tines as standard with optional 2100mm (7ft) long tines available.
- Our Hardox tines are made incorporating a replaceable wear tip meaning the tine never has to be replaced.
- 80mm pivot point pin fitted with replaceable hardened steel bushings.
- Hardox wear plate fitted to the full length of the bottom section.
- Fitted with hydraulic check valve for road safety & to increase pivot point lifespan.
- Double acting cushioned hydraulic cylinder on each wing.
- Incorporates a unique wing locking system when open which absorbs the stress and strain which would otherwise be all loaded on the pivot pin.
- Fitted with a spill frame with removable center for Z-linkage loaders.
- Greasable bushings on all pivot points.
- Optional extras: Lighting kit -(no:2 front facing work lights), colour options, transport tine guard, hydraulic flow divider valve.

Mammoth	Mammoth 36	Mammoth 42	Mammoth 49	Mammoth 55
Height (mm)	1750	1750	1750	1750
Width Open (mm)	3658mm (12ft)	4268mm (14ft)	4876mm (16ft)	5485mm (18ft)
Width Closed (mm)	2890mm (9ft5")	2890mm (9ft5")	2890mm (9ft5")	2890mm (9ft5")
Depth (mm)	2010	2010	2010	2010
Weight (kg)	1675*	1835*	1990*	2150*
Tine length (standard)	1830mm (6ft)	1830mm (6ft)	1830mm (6ft)	1830mm (6ft)
Tine width	50mm Hardox	50mm Hardox	50mm Hardox	50mm Hardox
Number of bottom Tines	14	16	18	20
Tine Spacing (mm)	227	227	227	227
Ram	2 x 75mm Bore	2 x 75mm Bore	2 x 75mm Bore	2 x 75mm Bore

*Weights shown are for the fork complete with a bolt on frame (no brackets)

All of our attachments are designed to operate at 200 BAR hydraulic pressure.

Machines operating above 200 BAR will require a relief valve.



Taurus Folding Fork



Taurus Folding Fork

The Prodig Taurus Folding Fork is built with the same strength and durability as our Mammoth folding fork but is designed for continental conditions with longer drier grass and large quantities of maize silage.

- The fork is fitted with wider tine spacing than our standard folding fork. This is to help longer, dryer grass silage to flow through the fork, making it easier to disperse on the pit.
- During maize season, the fork can then be fitted with a bolt on maize blade and tine infills which allows the fork to carry, disperse and level maize silage with ease.
- Available in widths from 3.6 meters (12ft) to 5.5 meters (18ft)
- 1830mm (6ft) X 50mm Hardox tines as standard with optional 2100mm (7ft) long tines available.
- Our Hardox tines are made incorporating a replaceable wear tip meaning the tine never has to be replaced.
- Incorporates a unique wing locking system when open which absorbs the stress and strain which would otherwise be all loaded on the pivot pin.
- Fitted with a hydraulic check valve & ram cushioning which assists with prolonging pin and bushing lifespan.
- 80mm pivot pin fitted with replaceable hardened steel bushings.
- Hardox wear plate fitted to the full length of the bottom section.
- Optional extras: Lighting kit - (no:2 front facing work lights), colour options, transport tine guard, maize blade, hydraulic flow divider valve.

Taurus	Taurus 36	Taurus 42	Taurus 49	Taurus 55
Height (mm)	1750	1750	1750	1750
Width Open (mm)	3658mm (12ft)	4268mm (14ft)	4876mm (16ft)	5485mm (18ft)
Width Closed (mm)	2890mm (9ft5")	2890mm (9ft5")	2890mm (9ft5")	2890mm (9ft5")
Depth (mm)	2010	2010	2010	2010
Weight (kg)	1520*	1685*	1850*	2000*
Tine length	1830mm (6ft)	1830mm (6ft)	1830mm (6ft)	1830mm (6ft)
Tine width	50mm Hardox	50mm Hardox	50mm Hardox	50mm Hardox
Number of bottom tines	10	12	14	16
Tine spacing (mm)	328	328	328	328
Hydraulic cylinder	2 x 75mm Bore	2 x 75mm Bore	2 x 75mm Bore	2 x 75mm Bore

*Weights shown are for the fork complete with a bolt on frame (no brackets)
 All of our attachments are designed to operate at 200 BAR hydraulic pressure.
 Machines operating above 200 BAR will require a relief valve.



Grass Fork & Contractor Grass Fork



Grass Fork (GF)

The ProDig Grass Fork is designed to utilise smaller machines when handling grass or maize silage such as tractor loader, tele-handler or small articulated loader.

- Designed for farmers utilising their own machinery for maize and silage.
- Available in widths from 2.2m to 3m.
- Heavy duty fork back with vision windows to view outer tines when loading.
- 1250mm x 25mm square profile Hardox tines used in bottom bar for long service life.
- Our Hardox tines are made incorporating a replaceable wear tip meaning the tine never has to be replaced.
- Engineered and fabricated bottom section for superior structural strength and rigidity.
- Also available with 1250mm forged stone fork tines in steel bushes.
- Top spill frame as standard on all grass forks to increase volume and prevent spillage onto the loader.
- Bolt on or welded hitch system to suit all machines.



Contractor Grass Fork (CF)

The ProDig Contractor Grass Fork is designed for large and medium wheeled loaders and large telehandlers handling grass silage in compact areas or with lower volumes.

- Designed for use on articulated loaders.
- Available in widths from 2.5m to 3.6m.
- Heavy duty construction using high yield structural hollow section and plate.
- 1400mm x 40mm square profile Hardox tines used in bottom bar for long service life.
- Our full range of Hardox tines are manufactured incorporating a replaceable wear tip meaning the tine never has to be replaced.
- Bottom wear pads made from 400 Brinell cutting edge.
- Full width spill frame to increase capacity and prevent spillage of material onto the loader.
- Hitches available to suit all machines.
- Optional extras: double side tines, bolt on centre spill frame for z-linkage, transport tine guard.

Grass Fork	GF2200	GF2500	GF2700	GF3000	CF 2500	CF 2750	CF 3000	CF 3300	CF 3600
Height (mm)	1150	1150	1150	1150	1415	1415	1415	1415	1485
Width (mm)	2200	2500	2700	3000	2500	2750	2995	3300	3600
Depth (mm)	1300	1300	1300	1300	1470	1470	1470	1470	1470
Weight (kg)	310	350	365	380	570	620	670	720	770
Tine length(mm)	1240 (48")	1240 (48")	1240 (48")	1240 (48")	1400(55")	1400(55")	1400(55")	1400(55")	1400(55")
Tine spacing(mm)	220	200	220	220	225	225	225	230	230
Tine thickness(mm)	25	25	25	25	40	40	40	40	40
Number of tines	10	12	12	13	10	11	12	13	14

ProDig Attachments
Newtown, Bangenaltown
Carlow, Ireland



+353 (0)59 972 7494



+353 (0)86 7809888



sales@prodigattachments.com

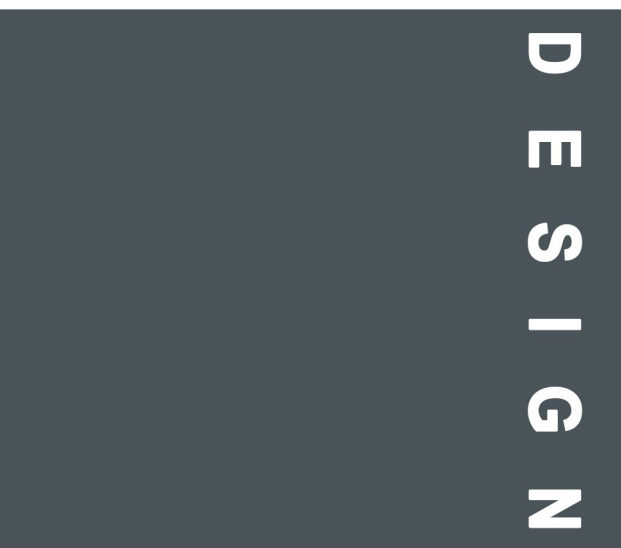


www.prodigattachments.com

Your Contact:



STRENGTH



DESIGN



INNOVATION



Grain-Industrial Handling Range

MANUFACTURERS OF QUALITY MACHINERY ATTACHMENTS
FOR AGRICULTURAL AND CONSTRUCTION SECTOR



Hi-Tip Bucket

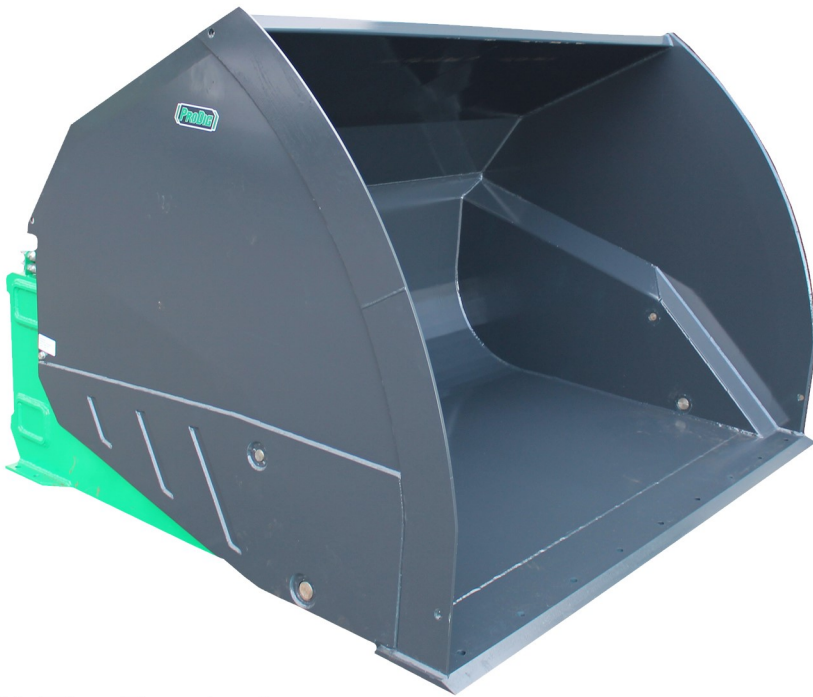
- Available in our standard range of capacities from 1.6m³ up to 6.0m³.
- Discharge height and forward reach increased by 600mm to 1825mm respectively.
- For use with various bulk materials such as gravel, grain, woodchips, compost, etc.
- Soft close twin double acting hydraulic rams that are protected within double skin sides.
- Flat floor for easy loading, with 400 Brinell steel cutting edge.
- Can be fitted with optional 400 Brinell bolt on reversible cutting edge.
- High yield alloy steel used in the carriage frame for a longer working life.
- Designed with water level crowd-back to retain more material.
- Weld on or bolt on hitch brackets to suit any machine type.
- Optional Extras: bolt on brackets (HTB 1.6m³ - 2.4m³ only), 3 part bolt on cutting edge, second weld on cutting edge, bolt on spill frame, Z-linkage cut out, colour options.

Code	Width(mm)	Height(mm)	Capacity(m ³)	Weight (kg)	Code	Width(mm)	Height(mm)	Capacity(m ³)	Weight (kg)
HTB 1.6	1800	1225	1.6	725	HTB 4.15	2500	1500	4.15	1400
HTB 2.0	2280	1225	2.0	920	HTB 4.6	2750	1500	4.6	1540
HTB 2.2	2500	1225	2.2	1010	HTB 5.0	3000	1500	5.0	1680
HTB 2.4	2750	1225	2.4	1110					
HTB 2.55	2280	1360	2.7	1030	HTB 5.1	2500	1700	5.1	1650
HTB 2.8	2500	1360	2.8	1130	HTB 5.5	2750	1700	5.5	1815
HTB 3.0	2700	1250	3.0	1240	HTB 6.0	3000	1700	6.0	1980
HTB 3.3	2750	1360	3.3	1240					
HTB 3.4	2500	1415	3.4	1200					
HTB3.5	2700	1415	3.5	1300					
HTB3.65	2750	1415	3.65	1325					
HTB 4.0	3000	1415	4.0	1440					

All of our attachments are designed to operate at 200 BAR hydraulic pressure.
Machines operating above 200 BAR will require a relief valve.



Heavy Duty Hi-tip Bucket



Hi Tip Bucket

The Prodig Heavy Duty Hi-Tip bucket is designed for large wheel loaders for agri & industrial use. This bucket is designed for use on loaders with up to 18 tonne break-out force.

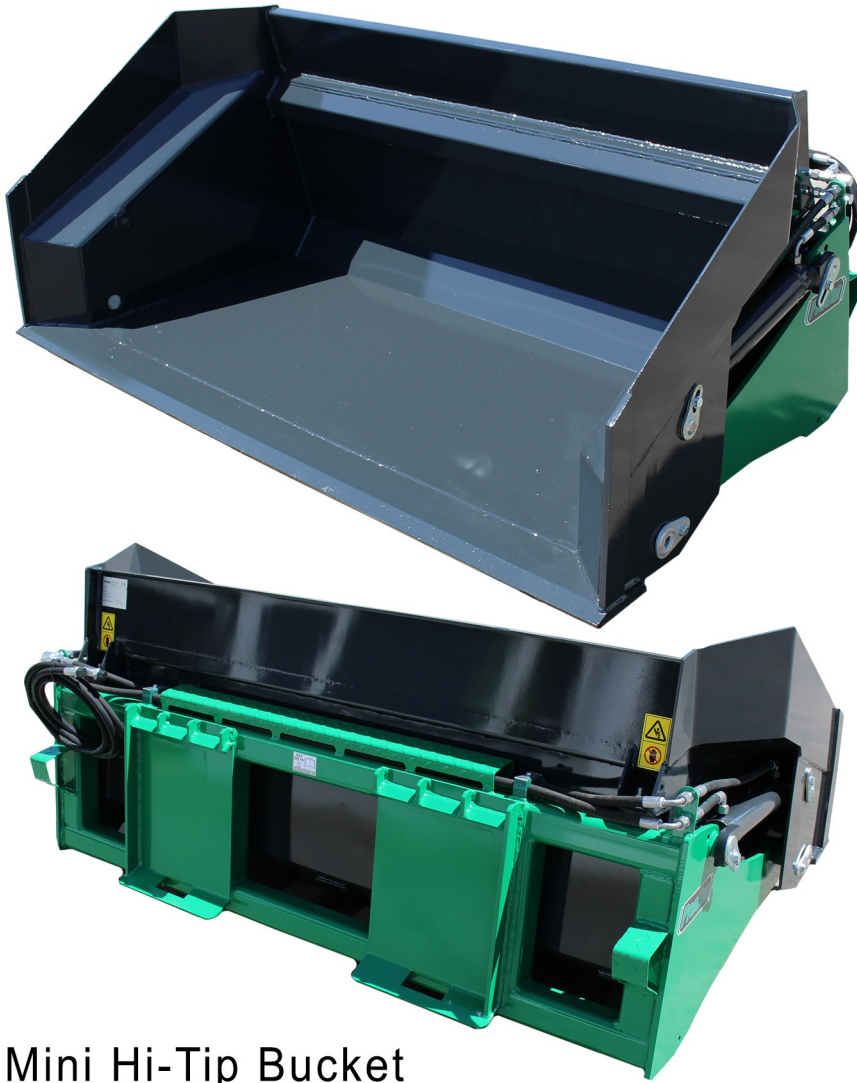
- Available in our standard range of capacities from 3.65m³ up to 8.0 m³.
- Discharge height and forward reach increased by 1800mm to 2400mm respectively.
- For use with various bulk materials such as gravel, grain, woodchips, compost, etc.
- Soft close twin double acting hydraulic rams that are protected within double skin sides.
- Made with Hardox steel in the shell, leading edge, inner & outer bucket side.
- Hardox arms & high yield alloy steel used in the carriage frame for a longer working life
- Flat floor for easy loading, with 400 Brinell steel cutting edge.
- Can be fitted with optional 500 Brinell bolt on reversible cutting edge.
- Designed with water level crowd-back to retain more material.
- Weld on hitch brackets to suit any machine type.
- Optional Extras: 3 part bolt on cutting edge, second weld on cutting edge, Z-linkage cut out, bolt on spill frame & colour options.

Code	Width (mm)	Height (mm)	Depth (mm)	Capacity (m ³)	Weight (kg)
HD-HTB 3.65	2500	1575	1830	3.6	2245
HD-HTB 3.95	2750	1575	1830	3.95	2350
HD-HTB 4.3	3000	1575	1830	4.3	2455
HD-HTB 4.15	2500	1415	1730	4.15	2465
HD-HTB 4.6	2750	1415	1730	4.6	2565
HD-HTB 5.0	3000	1415	1730	5.0	2665
HD-HTB 5.1	2500	1715	1800	5.1	2780
HD-HTB 5.5	2750	1715	1800	5.5	2880
HD-HTB 6.0	3000	1715	1800	6.0	2980
HD-HTB 6.65	2500	1830	1900	6.65	2945
HD-HTB 7.35	2750	1830	1900	7.35	3045
HD-HTB 8.0	3000	1830	1900	8.0	3145

Weights may vary depending on add-on extras and hitch. All of our attachments are designed to operate at 200 BAR hydraulic pressure. Machines operating above 200 BAR will require a relief valve.



Mini Hi-tip Bucket



Mini Hi-Tip Bucket

- Available in a range of sizes from 1.5m up to 2.0m.
- Standard & high capacity models available.
- Discharge height and forward reach increased.
- For use with various materials such as gravel, grain, woodchips, compost, etc.
- Soft close twin double acting hydraulic rams that are protected within double skin sides.
- Flat floor for easy loading, with 400 Brinell steel cutting edge.
- Can be fitted with optional 400 Brinell bolt on reversible cutting edge.
- High yield alloy steel used in the carriage frame for a longer working life.
- Hitch system available to fit all machines.

Code	Width(mm)	Height(mm)	Depth(mm)	Capacity(m ³)	Weight(kg)
Standard					
HTBSS 1500	1500	620	1200	0.57	330
HTBSS 1800	1800	620	1200	0.68	375
HTBSS 2000	2000	620	1200	0.80	435
High Capacity					
HTBSS 1500-H	1500	820	1200	0.80	370
HTBSS 1800-H	1800	820	1200	0.95	415
HTBSS 2000-H	2000	820	1200	1.1	480



Grain Bucket

- Grain buckets available in capacities from 1.9m³ to 4.9m³.
- Designed to handle bulk materials such as grain, wood-chip etc.
- Pressed steel curved shell retains less material when emptied.
- Hardened 200mm x 25mm to 250mm x 30mm steel cutting edge as standard respectively.
- 12mm wear straps for superior structural integrity.
- Side wear strips as standard.
- Crowd back to water level on most machines.
- Optional extras: Reversible bolt on edge

Code	Width (mm)	Height (mm)	Depth (mm)	Capacity(m ³)	Weight (kg)
GB 1.9	2280	1060	1265	1.9	540
GB 2.1	2500	1060	1265	2.1	570
GB 2.3	2750	1060	1265	2.3	600
GB 2.5	2995	1060	1265	2.5	640
GB 2.7	2280	1300	1560	2.7	745
GB 3.0	2500	1300	1560	3.0	820
GB 3.3	2750	1300	1560	3.3	900
GB 3.6	2995	1300	1560	3.6	980
GB 4.0	2500	1490	1625	4.0	955
GB 4.5	2750	1490	1625	4.5	1055
GB 4.9	2995	1490	1625	4.8	1155



Agri Loading Shovel Bucket

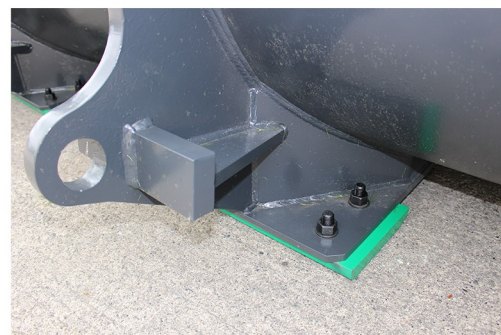
- Articulated Loading Shovel Buckets available in capacities from 1.9m³ to 2.6m³.
- Designed for intense heavy duty use such as loading, re-handling etc.
- Manufactured with a various range of high yield plates.
- Rolled high yield steel curved shell retains less material when emptied.
- Hardened 400 Brinell 250 X 30 leading edge.
- Optional extras:
Reversible bolt on 400 Brinell edge or replaceable tip heavy duty teeth, high volume sides.
- Fitted with bucket level indicator as standard.
- Angled fin plates brace the top deflector and guide debris away from hitch.

Agri Loading Shovel Bucket	ALB 1.9	ALB 2.1	ALB 2.3	ALB 2.5	ALB 2.6
Width (mm)	2280	2500	2750	2995	3100
Height (mm)	1235	1235	1235	1235	1235
Depth (mm)	1200	1200	1200	1200	1200
Capacity (m ³)	1.9	2.1	2.3	2.5	2.6
Weight (kg)	835*	900*	965*	1020*	1055*
Shell (mm)	8	8	8	8	8
Sides (mm)	10	10	10	10	10
Cutting edge (mm)	30x250	30x250	30x250	30x250	30x250

*weight including Industrial Euro 50 hitch



Industrial Loader Bucket



Industrial Loading Shovel Bucket

- High Capacity Articulated Loading Shovel Buckets available in capacities from 3.15m³ to 3.9m³.
- Designed for intense heavy duty use such as loading, re-handling etc.
- Manufactured with a various range of high yield plates.
- Rolled high yield steel curved shell retains less material when emptied.
- Floor of bucket angled 5 degrees from the ground. This means the heel takes most of the wear and saves the shell from wear.
- Hardened 400 Brinell 300 X 30 leading edge and heel plate.
- Optional extras: Reversible bolt on 500 Brinell edge, replaceable tip heavy duty teeth, high volume sides, also a wide range of armoured protection parts.

Industrial Loading Shovel Bucket	ILB 3.15	ILB 3.45	ILB 3.8	ILB 3.9
Width (mm)	2500	2750	2995	3100
Height (mm)	1585	1585	1585	1585
Depth (mm)	1320	1320	1320	1320
Capacity (m ³)	3.15	3.45	3.8	3.9
Weight (kg)	1280*	1350*	1420*	1445*
Shell (mm)	8	8	8	8
Sides (mm)	10	10	10	10
Cutting edge (mm)	30x250	30x250	30Xx50	30x250
*weight including Industrial Euro 50 hitch				



Bag Filler Bucket



Bag Filler Bucket

The Prodig Bag Filler Bucket is a clever unit that can be used to pick up material, fill and move bulk bags which increases productivity and eliminates spillages while loading bags. Also ideal for loading small trailers and hoppers.

- Available in 0.6m³, 1.0m³, 1.4m³ and 2.0m³ capacity to suit different size bags.
- Designed to fill various types of materials into bulk bags with ease.
- Economical one-person operation to fill and move bags with a single machine.
- 400 brinell Hardened steel 150 x 20 cutting edge with wear strips on bucket floor.
- Adjustable two-way hydraulic ram with check valve used to open heavy duty 20mm doors.
- Fitted with pressure relief valve to prevent damage with doors are obstructed.
- Bolt on hitch system available to fit all machines.
- optional extras: bolt on cutting edge, weigh load system, weigh load system complete with bluetooth transmitter.

Bag Filler Bucket	BF600	BF1000	BF1400	BF2000
Height (mm)	775	985	1125	1300
Width (mm)	1700	2020	2260	2560
Depth (mm)	1170	1315	1450	1620
Weight (kg)	400*	565*	669*	845*
Capacity (m ³)	0.6	1.0	1.4	2.0
Cutting edge (mm)	150x20	150x20	150x20	200x25
Ram	1x50mm Bore	1x50mm Bore	1x50mm Bore	1x50mm Bore

All of our attachments are designed to operate at 200 BAR hydraulic pressure.

Machines operating above 200 BAR will require a relief valve. *Weight including bolt on frame.



Fork Lift Bagfiller



Forklift Bag Filler Bucket

The Prodig Forklift Bag Filler Bucket is a unique attachment to utilise your forklift to pick up material, fill and move bulk bags which increases productivity and eliminates spillages. This unit can be fitted with load cells allowing it to weigh the material filled into bulk bags.

- Available in 0.6m³, 1.0m³ & 1.4m³ capacity to suit different size bags.
- Designed to fill various types of materials into bulk bags with ease using your forklift.
- Economical one-person operation to fill and move bags with your forklift.
- optional extras: bolt on cutting edge, weigh load system, weigh load system complete with bluetooth transmitter.
- Hardened steel 150mm x 20mm cutting edge with wear strips on bucket floor.

Forklift Bagfiller Bucket	FBF600	FBF1000	FBF1400
Height (mm)	760	960	1080
Width (mm)	1700	2020	2260
Depth (mm)	1440	1550	1650
Weight (kg)	555	670	760
Capacity (m ³)	0.6	1.0	1.4
Cutting edge (mm)	150x20	150x20	150x20
Ram	2x70mm Bore	2x70mm Bore	2x70mm Bore

All of our attachments are designed to operate at 200 BAR hydraulic pressure.
Machines operating above 200 BAR will require a relief valve.



Stone Fork

The Prodig Stone Fork has a uniquely designed Hardox cranked tine which allows the fork to move through soil more efficiently. The forks design allows it to be attached to a tractor three point linkage as well as front loader.

- Forks available in widths from 1.8m to 2.5m.
- Manufactured with unique cranked 25mm Hardox tines which easily slide under stones in soil.
- Heavy duty fork back with top vision grid to view all tines when loading.
- Engineered and fabricated bottom section for superior structural strength and rigidity.
- Fitted with side tines for better load retention.
- Available with bolt on or welded hitch system to fit all machines. 3 point linkage combo hitch available on request.

Stone Fork	SF1800	SF2200	SF2500
Height (mm)	885	885	1150
Width (mm)	1800	2200	2500
Depth (mm)	1050	1050	1050
Weight (kg)	387*	454*	540*
Tine lenght (mm)	990 (39")	990 (39")	990 (39")
Number of tines	18	22	25
Tine spacing(mm)	100	100	100

*Weight including bolt on frame.



Pallet Forks

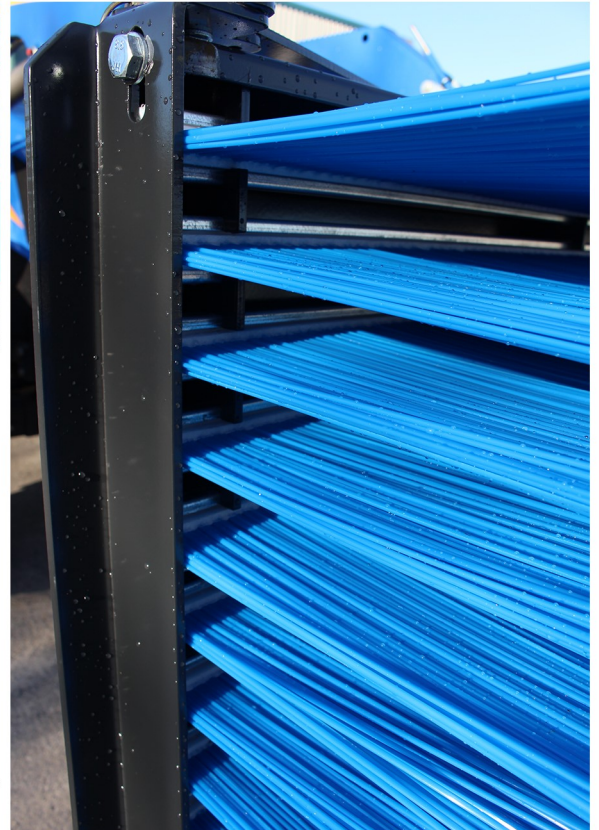
The Prodig Pallet Forks are a heavy duty certified set of forks that can be used in the agri, construction and recycling sectors.

- Ideal attachment for tractors and industrial loaders for safe loading and unloading.
- Available in 2 tonne up to 10 tonne.
- Fully certified forks with spring loaded locking pins for secure width adjustment.
- All forks comply to ISO 2328
- Heavy duty fork back with heavy top and bottom rail.
- Welded hitch brackets to suit all machines including excavators.
- Optional load guard can be fitted to any type of fork carriage.

Pallet Forks	PF 2000	PF 3000	PF 4900	PF 7000	PF 1000
Spec of Fork Carriage					
Height (mm)	410	510	510	630	630
Width (mm)	1250	1270	1270	1800	2100
Depth (mm)	75	75	95	120	170
Weight (kg)	70	80	90	250	425
Fork size (mm)	100x40x1250	100x45x1250	120x60x1250	150X60X1250	150X70X1250



Pro Sweep



Pro Sweep

The Prodig Pro Sweep is an attachment designed to increase efficiency and reduce costs when maintaining yards, roadways and other areas.

- Push broom sweeper suitable for use on all types of machines.
- Available in widths of 2.0m and 2.5m with 11 rows of bristles
- Long life polypropylene bristles which can easily be replaced.
- No hoses, chains or moving parts to maintain or lubricate.
- Galvanized bristle holders to ensure longer service life.
- Hitches to fit back and front end of all types of machinery.
- Low dust generation due to design make it ideal for indoor use.
- Fold away stands for storage when not in use.

ProSweep	PS 2000	PS 2500
Height (mm)	330	330
Width (mm)	2000	2500
Depth (mm)	685	685
Weight (kg)	140	170
Rows of bristles	11	11

Hitches available: Pallet Fork Sleeves, 3 Point Linkage, Pallet Fork Sleeves & 3 Point Linkage Combo, Tractor/Loader Hitches, Skid-Steer Hitch, Swivel Hitch

ProDig Attachments
Newtown, Bangenalstown
Carlow, Ireland



+353 (0)59 972 7494



+353 (0)86 7809888



sales@prodigattachments.com



www.prodigattachments.com

Your Contact: