

SPECIFICATIONS

COMPACT DRILL (Double Disc Opener model)

Model No.	Width	Drilling Range	# of Cups	Opener Spacing	Bushel Cap.	Base Wt.
VD-36PW	39"	29" - 32"	5	7-1/4"	6	1,715
VD-48PW	48"	36" - 42"	6	7-1/4"	8	1,754
VD-60PW	62"	51" - 58"	8	7-1/4"	10	1,895
VD-72PW	76"	65" - 72"	10	7-1/4"	12	1,987

Units include double disc openers, 2x13" presswheels and walkboard.

NO-TILL DRILL

VDNT-36PW	39"	29"	5	7-1/4"	6	2,165
VDNT-48PW	48"	36"	6	7-1/4"	8	2,254
VDNT-60PW	62"	51"	8	7-1/4"	10	2,495
VDNT-72PW	76"	65"	10	7-1/4"	12	2,687

Units include 17" diameter spring-loaded No-Till coulters, double disc openers, 2x13" presswheels and walkboard.



Other Great Schmeiser Products

T. G. SCHMEISER CO., INC.

P.O. Box 1047 • Fresno, CA 93714 • 559/288-8128 • FAX 559/288-3279
www.tgschmeiser.com • sales@tgschmeiser.com • Toll Free: 1-800-288-8128



Schmeiser reserves the right to make improvements in the design and changes in specifications at any time without incurring any obligation to install them on units previously sold.

Cover crop photo: Greg Wittenborn

COMPACT DRILL

The Solution for Better Crop Seeding



T.G. SCHMEISER®

SERIES 98 COMPACT DRILL.....

The Series 98 Vineyard and Orchard Compact Drill is designed to efficiently plant cover crop seed in vineyards, orchards and open field applications. Now available in 3', 4', 5' and 6' widths. The improved Series 98 Compact Drill features high capacity seed cups with E-Z View gauges and clean-outs, a high capacity legume seed box providing twice the seed volume, rapid adjust "T" Handle press wheels and heavier drives and jackshafts for even more durability. All field adjustments can easily be done by hand. No tools required.

Standard Features include:

- All welded box construction, low profile design
- Wind guard lid lock, seed saver and water resistant box lid
- All welded main frame
- Heavy duty 3mm 1/4" offset double disc blades
- Double springs
- 2 x 13" press wheels
- Seed box agitator
- CAT 1 & 2 three-point hitch
- High capacity 1-3/4" wide fluted seed cups
- Easy seed rate and drive wheel adjustment
- Non-slip walk board
- 2 bushel/foot legume seed box



Extra large capacity seed box with seed agitator



Rugged double disc opener with "T" handle adjustable presswheel



NO-TILL DRILL

The Schmeiser NO-TILL Drill is designed to tackle stubborn non cultivation ground. Heavy duty No-Till coulters are designed for severe ground conditions. Each wavy No-Till coulters is spring loaded to handle the toughest soils. The staggered offset of the No-Till coulters blades allows for excellent penetration through heavy trash, vegetation, and soil. Extra weight may be achieved by adding suitcase weights to the main frame bracket.

NATIVE GRASS SEED BOX (attachment)

The Schmeiser NATIVE GRASS SEED BOX (for planting native grasses and wildflower seeds) option attaches to the back of the main legume seed box on the Compact Drill. This specialized seed box will handle fluffy, native grass seeds that traditionally "bridge up" in conventional seed boxes. Metering is controlled by chain sprocket selection.

SMALL SEED BOX (attachment)

The Schmeiser SMALL SEED BOX is available for growers that want to plant small seeds such as covers, poppy seeds, alfalfa seeds along with larger seeds at multiple rates with their Compact Drill. The SMALL SEED BOX attaches directly to the back of the legume box.

TANDEM DRILL HITCH

This hitch will allow you to easily bolt two Schmeiser Compact Drills together for wider single pass operation. Using the Tandem Drill Hitch will give you flexibility in planting widths. Bolt (2) two 6ft. Drills together for 12ft. planting in orchards or just use (1) one 6ft. Drill for vineyard applications. One Hitch, twice the benefits.

OPEN FIELD LEVELERS

The Solution for Open Field Leveling Requirements



T. G. SCHMEISER®



TOP

SCHMEISER GRADER BLADE



PFS SERIES PRECISION FINISH SCRAPER



ENFIELD

VARITRAK™ 3PT. LAND LEVELER



SLP SERIES FOLDING TRI-PLANE LAND LEVELER



SCHMEISER TRI-PLANE LAND LEVELER



TRI-PLANE LEVELER

INCORPORATES THE BEST CHARACTERISTICS OF TRADITIONAL LAND PLANES WITH OUTSTANDING IN-FIELD DURABILITY. HEAVY GAUGE CONSTRUCTION ADDS MORE POUNDS AND STRENGTH THAN COMPETITIVE DESIGNS FOR LONGER LIFE, DEPENDABILITY AND PERFORMANCE.



SLP 16DS model shown

- Reinforced pull frame and front end for extended wear life
- Front & rear vertical pivot points with heavy duty bushings
- Heavy wall thickness for all frame members



SLP 24QRF model shown

- Flange bearing design on all steel wheels for easy service
- Smooth rolled bucket design for increased soil flow and minimal resistance
- Large flotation tires for easy towing
- Available in widths of 12' through 18' (Rigid) and 20' through 24' (Folding) and lengths of 30' and 40'
- Bucket wings and rear steel wheels easily fold for transport into an 11'0" width on folding units



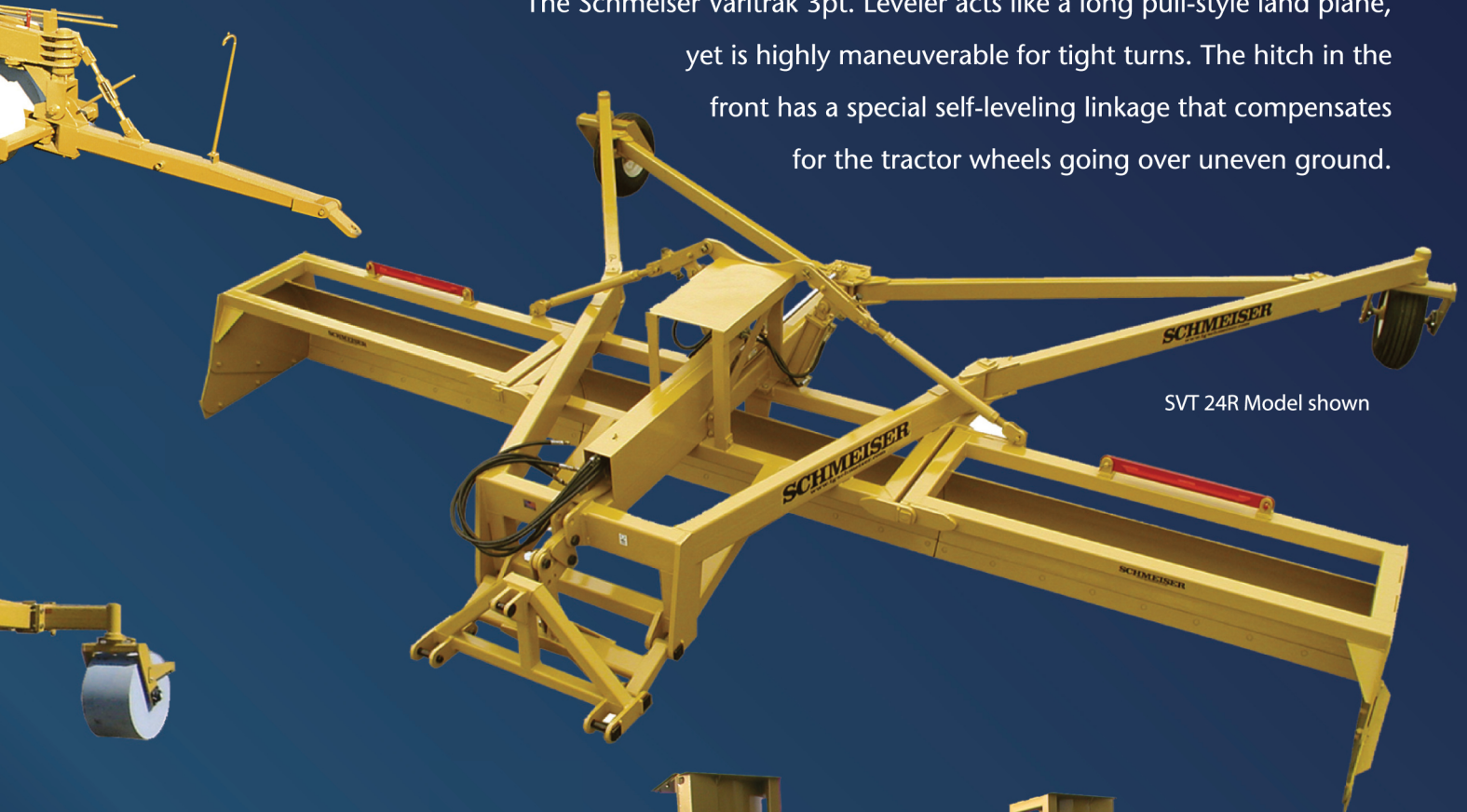
PIVOT POWER

High wear carbon fiber bushings along with rugged triple-layer thrust bearings ensure long life and reliable performance. Easy-to-lockout front end allows for quick and dependable transport.

VARITRAK™ 3PT. LAND LEVELER

HIGH SPEED & MANEUVERABLE

The Schmeiser Varitrak 3pt. Leveler acts like a long pull-style land plane, yet is highly maneuverable for tight turns. The hitch in the front has a special self-leveling linkage that compensates for the tractor wheels going over uneven ground.



SVT 24R Model shown

- 16', 20' and 24' wide buckets
- 5-8 mph operating speed
- 30" bucket height
- 42" bucket depth
- CAT III hitch size – (CAT III Quick Hitch)
- Reinforced 3pt. framework
- Extra HD bushings in high wear pivot points



Shown: 3Pt. hydraulic attachment that easily adapts the unit for Laser use.

20' and 24' models have a folding bucket for a convenient 13' 6" transport width.



PFS SERIES PRECISION FINISH SCRAPER

EXTREMELY VERSATILE

The PFS Series Precision Finish Scraper is designed to provide precision laser and GPS leveling in diverse applications such as: open fields, feedlots, dairy, construction, open mining and any place where exact leveling is required. In addition, the PFS Precision Finish Scraper can also serve as a standard leveler in conventional situations.

- Available in the following working widths: 12', 14', 16', 18', 20', 22' and 24'.

Schmeiser quality is built in:

- Tough, durable and reliable construction.
- Detachable pull frame.
- CAT IV Perfect Hitch.
- Adjustable hitch height.
- Slobber bits 5/8" - AR material/reversible.
- 42" bucket height / 66" depth.
- Double-beveled reversible 3/4"x8" high carbon blade.
- Tandem walking beams with 2-3/4" spindles.

Options:

- Easy to haul "End Tow Transport" available for 20', 22' and 24' models.
- Laser Towers (single or twin).
- GPS stands (single or twin).



SCHMEISER GRADER BLADE

20', 30' and 40' WIDTHS PROVIDE
OPTIMAL SINGLE PASS LEVELING;

FOLDS TO 8' FOR CONVENIENT TRANSPORT.

Ideal for open field work, the Schmeiser SGB Series Grader Blade offers high-quality grading where laser and precision scrapers are not necessary. Built to maximize your daily productivity, the 40' wide working blade covers more land - with fewer passes - in less time, saving on fuel and labor.

The folding mechanism allows the grader to be easily transportable to multiple sites for optimum efficiency.



- 40' width: fewer passes required.
- Transport width: 8'.

Schmeiser quality is built in:

- Tough, durable and reliable construction.
- Reversible cutting blade.
- Self-lubricating bushings on high-impact pivot points.
- 27" curved bucket height promotes optimum soil roll.
- Easy to adjust reversible gauge wheels.
- Positive hydraulic depth control is standard.

SCHMEISER TRI-PLANE LAND LEVELERS

Model	Width x Length	Front Wheel Style	Overall Width	Overall Length	Weight	Approx. HP
SLP 12DS30	12 ft. x 30 ft.	Dual Steel Wheels	12'6" (3.8m)	40' (12.2m)	7040 lbs. (3193kg)	115 - 140
SLP 12QR30	12 ft. x 30 ft.	Quad Rubber Tire	12'6" (3.8m)	40' (12.2m)	6640 lbs. (3012kg)	115 - 140
SLP 14DS30	14 ft. x 30 ft.	Dual Steel Wheels	14'6" (4.4m)	40' (12.2m)	7190 lbs. (3261kg)	130 - 155
SLP 14QR30	14 ft. x 30 ft.	Quad Rubber Tire	14'6" (4.4m)	40' (12.2m)	6790 lbs. (3080kg)	130 - 155
SLP 14DS	14 ft. x 40 ft.	Dual Steel Wheels	14'6" (4.4m)	50' (15.2m)	7490 lbs. (3398kg)	130 - 155
SLP 14QR	14 ft. x 40 ft.	Quad Rubber Tire	14'6" (4.4m)	50' (15.2m)	7090 lbs. (3216kg)	130 - 155
SLP 16DS30	16 ft. x 30 ft.	Dual Steel Wheels	16'6" (5.0m)	40' (12.2m)	7330 lbs. (3325kg)	150 - 175
SLP 16QR30	16 ft. x 30 ft.	Quad Rubber Tire	16'6" (5.0m)	40' (12.2m)	6930 lbs. (3144kg)	150 - 175
SLP 16DS	16 ft. x 40 ft.	Dual Steel Wheels	16'6" (5.0m)	50' (15.2m)	7630 lbs. (3461kg)	150 - 175
SLP 16QR	16 ft. x 40 ft.	Quad Rubber Tire	16'6" (5.0m)	50' (15.2m)	7230 lbs. (3280kg)	150 - 175
SLP 18DS30	18 ft. x 30 ft.	Dual Steel Wheels	18'6" (5.6m)	40' (12.2m)	7430 lbs. (3370kg)	170 - 190
SLP 18QR30	18 ft. x 30 ft.	Quad Rubber Tire	18'6" (5.6m)	40' (12.2m)	7030 lbs. (3189kg)	170 - 190
SLP 18DS	18 ft. x 40 ft.	Dual Steel Wheels	18'6" (5.6m)	50' (15.2m)	7730 lbs. (3507kg)	170 - 190
SLP 18QR	18 ft. x 40 ft.	Quad Rubber Tire	18'6" (5.6m)	50' (15.2m)	7330 lbs. (3325kg)	170 - 190

Includes hydraulic transport assembly (with (2) 12.5x16 tires and (2) 3-1/2x8" welded cylinders) • Lead hoses included

Dual steel units include (4) 30" diameter x 18" wide steel wheels with 1-11/16" flange bearings • Quad rubber tire units include (4) 9.5L x 15 rib implement tires on front end of machine in lieu of (2) steel wheels.

SCHMEISER FOLDING TRI-PLANE LAND LEVELERS

Model	Width x Length	Front Wheel Style	Overall Width	Overall Length	Weight	Approx. HP
SLP 20DSF	20 ft. x 40 ft.	Dual Steel Wheels	20'6" (6.2m)	50' (15.2m)	9250 lbs. (4196kg)	200-260
SLP 20QRF	20 ft. x 40 ft.	Quad Rubber Tire	20'6" (6.2m)	50' (15.2m)	8850 lbs. (4014kg)	200-260
SLP 22DSF	22 ft. x 40 ft.	Dual Steel Wheels	22'6" (6.9m)	50' (15.2m)	9360 lbs. (4246kg)	220-280
SLP 22QRF	22 ft. x 40 ft.	Quad Rubber Tire	22'6" (6.9m)	50' (15.2m)	8960 lbs. (4064kg)	220-280
SLP 24DSF	24 ft. x 40 ft.	Dual Steel Wheels	24'6" (7.5m)	50' (15.2m)	9470 lbs. (4296kg)	240-300
SLP 24QRF	24 ft. x 40 ft.	Quad Rubber Tire	24'6" (7.5m)	50' (15.2m)	9070 lbs. (4114kg)	240-300

All Units easily fold to an 11'0" transport width

SCHMEISER VARITRAK™ LAND LEVELERS

Model	Size	Transport Width	Overall Length	Weight	Approx. HP
SVT-16S	16' (4.9m)	16'6" (5.0m)	24' (7.3m)	3868 lbs. (1755kg)	125 - 145
SVT-16R	16' (4.9m)	16'6" (5.0m)	24' (7.3m)	3600 lbs. (1633kg)	125 - 145
SVT-20S	20' (6.1m)	13'6" (4.1m)	24' (7.3m)	4708 lbs. (2136kg)	150 - 175
SVT-20R	20' (6.1m)	13'6" (4.1m)	24' (7.3m)	4440 lbs. (2014kg)	150 - 175
SVT-24S	24' (7.3m)	13'6" (4.1m)	24' (7.3m)	4855 lbs. (2202kg)	180 - 210
SVT-24R	24' (7.3m)	13'6" (4.1m)	24' (7.3m)	4587 lbs. (2081kg)	180 - 210

Includes self-leveling compensation hitch, extra HD bushings in all high wear pivot points, including hitch and rear stabilizer arms.

Pivot assembly on rear wheels are comprised of 3" shaft, thrust bearings and bushings • Folding models include (2) 4"x 12" wing cylinders, (1) 3" x 36" rear frame cylinder and connecting hoses • Lead hoses are included

SCHMEISER PRECISION FINISH SCRAPERS

Model	Bucket Width x Height	Approx. HP	Weight
PFS 12	12'x22"	145-200	6800 lbs. (3048kg)
PFS 14	14'x22"	170-230	7000 lbs. (3175kg)
PFS 16	16'x22"	190-265	7200 lbs. (3266kg)
PFS 18	18'x22"	215-300	7400 lbs. (3357kg)
PFS 20*	20'x22"	240-330	8500 lbs. (3856kg)
PFS 22*	22'x22"	265-365	8720 lbs. (3955kg)
PFS 24*	24'x22"	300-400	8980 lbs. (4073kg)

* End tow transport available

SCHMEISER GRADER BLADES

Model	Overall Width	Transport Width	Overall Transport Length	Weight
SGB-20	20'2"	8'0"	24'8"	2100 lbs. (953kg)
SGB-30	30'2"	8'0"	34'8"	2600 lbs. (1179kg)
SGB-40	40'2"	8'0"	44'8"	3100 lbs. (1460kg)

Tires/wheels included (8) 205-75-15; hydraulic cylinders 4"x20". Hydraulic depth control standard on all units. Lead Hoses included.

Schmeiser reserves the right to make improvements in design and changes in specifications at any time without incurring any obligation to install them on units previously sold.

T. G. SCHMEISER®
www.tgschmeiser.com • sales@tgschmeiser.com • 1-800-288-8128



Schmeiser Drag Scraper



SDS-10 shown with optional slobber bits

The **Schmeiser Drag Scraper** is a work horse! Use it to grade roads in the morning and it will be ready to go down your orchard floor in the afternoon. From dairy lanes to vineyard rows, the **Schmeiser Drag Scraper** does it all. With that much utility, you'll be able to rest easy knowing that Schmeiser quality and durability comes standard with every unit.

Features:

- Tough, durable and reliable construction
- 1/4 yard per foot bucket capacity
- Replaceable, long life UHMW wheel axle bushings
- Replaceable/reversible wheel axle spindles

SDS Model (Heavy)

- Easy to adjust pull frame to match tractor draw-bar height
- Standard with Perfect Hitch for 40 degree articulation
- Easily converts to Three Point Hitch Model, Cat II, Cat II Quick-Hitch

SDSM Model (Medium)

- Rigid pull frame



SDSM-10 shown w/ optional slobber bits

	SDS-08	SDS-10	SDS-12	SDS-14
Width	8'	10'	12'	14'
*Weight	1,580	1,690	1,860	2,000
HP Range	65-85	75-100	90-110	100-130

* Medium Duty is approx. 300 lbs. lighter

LEVELERS

The Solution for Orchard Leveling Requirements



T. G. SCHMEISER®



ORCHARD LEVELERS

Also Ideal for Smaller Acreage and Special Applications

V-BLADE LEVELER™

The ideal tool for leveling orchard floors from side to side. The "V" Blade Leveler knocks down the high spots and fills in the low areas with a single pass.



Roller Model Shown

MODEL 77 LEVELER™

One of the most versatile tools you can use. It levels, smooths, pulverizes the soil, fills depressions, and packs it all in one operation.

RCHARD

BANTAM LEVELER™

The Bantam Leveler is an economical solution for the price conscious grower who needs to efficiently move a lot of dirt and firm the ground. This leveler smooths the orchard floor while at the same time firming it up.



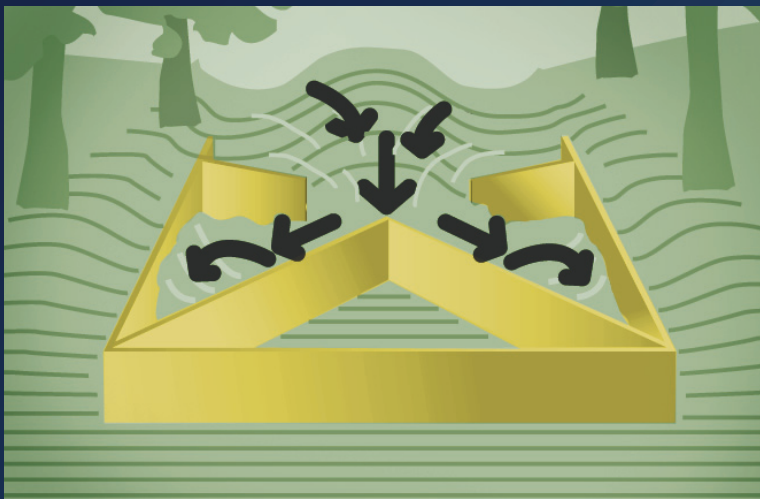
"V" BLADE LEVELER



- ADJUSTABLE SIDE TRAP DOORS
- 8 FT. - 18 FT. WIDE
- CAT II & III (Also CAT II & III Quick Hitch)
- ADJUSTABLE BLADES
- OPTIONAL BERM SCRAPERS
(Standard and Roller Models)

Challenge: Orchard ground is not level from trash left from harvest or ruts from tractor tires. During irrigation water tends to run on one side or the other, but never evenly down the rows.

Solution: The Schmeiser "V" Blade Leveler is the ideal pre- and post-harvest tool for leveling orchards floors. The "V" Blade Leveler will knock down the high spots and fill in the low areas with a single pass.



The idea is simple. First, the "V" Blade Leveler slices and crowds dirt to the center, then it pushes dirt back towards the outside (continuously cutting and filling). The rear smoothing plate or the roller model act as a stabilizer to firm and flatten the soil as well. The reversible cutting blades are curved, so dirt, trash and vegetation is sliced and rolled (like a roadgrader blade). Blade mounts are slotted so cutting depth can be adjusted.

VBL STANDARD MODEL

ELIMINATES RUTS AND HIGH SPOTS

The Schmeiser V-Blade is the ideal tool to level out (side to side) your orchard. Use it in the springtime to remove ruts left by the sprayer, in the summertime for harvest prep and in the fall to eliminate the crowns left in the middles from harvest. The adjustable Side Trap Doors allow excess trash (or soil) to flow to the outside. Use the Keyhole Mounts to drag a tire behind to feather out any ridges for a smooth finish. Berm Scrapers are available.



Shown with optional Berm Scrapers

VBL-R ROLLER MODEL

The Schmeiser V-Blade Roller Model handles sticks, rocks and trash easily without dragging grooves. Minimum soil buildup in front of the roller will reduce amount of soil dragged to the end of the rows. The Mud Scraper easily flips over ready for use. The adjustable Side Trap Doors and Keyhole Mounts are included.



Berm Scrapers are now available on roller models.

BANTAM LEVELER

THE RIGHT TOOL FOR ORCHARD HARVEST PREPARATION

Built to traditional Schmeiser standards of quality, the Bantam Leveler meets the need for a well-built leveler for orchards.

- Easy bucket adjustment
- Low clearance height
- Large bucket capacity
- 20" smooth roller
- Economical
- Five-position offset hitch allows the leveler to work under trees while the tractor stays in the center of the rows



- Rear roller scraper blade included
- Fluid may be added to rear roller for additional weight for better soil compaction

MODEL 77 LEVELER

ENGINEERED AND DESIGNED TO DO A BETTER JOB IN A SINGLE PASS

This is one of the most versatile tools you can use. It levels, smooths, pulverizes the soil, fills depressions, and packs it all in one operation. With dual pivot points, the Model 77 Leveler turns tight at the end of each row. The Model 77 Leveler is extremely maneuverable in open field and orchard applications.



The front roller section is equipped with a Till an' Pak unit that breaks clods and pulverizes the soil. The center section has a heavy duty bucket that fills holes and levels. The rear section is equipped with a 20" diameter Smooth an' Roll unit. Water can be added to both front and rear rollers for additional weight.

High strength pillow block bearings are used on both the front Till an' Pak and the rear Smooth an' Roll. Cast iron bearings are used on both front and rear axle pivots, and on the wheel cross shaft.

The split rear roller is actually two rollers in one. A differential shaft allows the outside roller to spin faster on tight turns while the inside roller spins slower (less drag on turns). This is the same concept as the rear axle on a vehicle.



The wheel transport is operated by a single hydraulic cylinder, which lifts the unit high off the ground for easy transport. It is also equipped with positive rod control steering locks for operating on highways.

The Model 77 Leveler is available in 10, 11, 12, 14 and 15 foot widths; in 20 foot lengths with hydraulic transport included.

V-BLADE LEVELER (Standard Model)

Model	Size	Overall Width*	Overall Length	Weight*	Approx. HP
VBL-08	8' (2.4m)	8'2" (2.5m)	8'6" (2.6m)	1460 lbs. (662kg)	40 - 55
VBL-09	9' (2.7m)	9'2" (2.8m)	8'6" (2.6m)	1550 lbs. (703kg)	40 - 60
VBL-10	10' (3.0m)	10'2" (3.1m)	8'6" (2.6m)	1640 lbs. (744kg)	50 - 65
VBL-11	11' (3.4m)	11'2" (3.4m)	8'6" (2.6m)	1730 lbs. (785kg)	55 - 70
VBL-12	12' (3.6m)	12'2" (3.7m)	8'6" (2.6m)	1820 lbs. (826kg)	60 - 75
VBL-13	13' (3.9m)	13'2" (4.0m)	8'6" (2.6m)	1910 lbs. (866kg)	65 - 80
VBL-14	14' (4.2m)	14'2" (4.3m)	8'6" (2.6m)	1990 lbs. (903kg)	75 - 90
VBL-15	15' (4.5m)	15'2" (4.6m)	8'6" (2.6m)	2080 lbs. (943kg)	75 - 95
VBL-16	16' (4.9m)	16'2" (4.9m)	8'6" (2.6m)	2150 lbs. (975kg)	80 - 100
VBL-17	17' (5.2m)	17'2" (5.2m)	8'6" (2.6m)	2240 lbs. (1016kg)	85 - 105
VBL-18	18' (5.4m)	18'2" (5.5m)	8'6" (2.6m)	2330 lbs. (1057kg)	90 - 110



3pt. Hitch will accept CAT II, CAT III, CAT II Quick Hitch, CAT III Narrow Quick Hitch

* Does not include berm scrapers. Berm scrapers are optional.

V-BLADE/ROLLER LEVELER (Roller Model)

Model	Size	Overall Width	Overall Length	Weight	Approx. HP
VBL-08R	8' (2.4m)	8'6" (2.6m)	8'6" (2.6m)	1520 lbs. (689kg)	40 - 55
VBL-09R	9' (2.7m)	9'6" (2.9m)	8'6" (2.6m)	1615 lbs. (733kg)	45 - 60
VBL-10R	10' (3.0m)	10'6" (3.2m)	8'6" (2.6m)	1710 lbs. (776kg)	50 - 65
VBL-11R	11' (3.4m)	11'6" (3.5m)	8'6" (2.6m)	1790 lbs. (812kg)	55 - 70
VBL-12R	12' (3.7m)	12'6" (3.8m)	8'6" (2.6m)	1900 lbs. (862kg)	60 - 75
VBL-13R	13' (4.0m)	13'6" (4.1m)	8'6" (2.6m)	1995 lbs. (905kg)	65 - 80
VBL-14R	14' (4.3m)	14'6" (4.4m)	8'6" (2.6m)	2080 lbs. (943m)	75 - 90
VBL-15R	15' (4.6m)	15'6" (4.7m)	8'6" (2.6m)	2175 lbs. (987kg)	75 - 95
VBL-16R	16' (4.9m)	16'6" (5.0m)	8'6" (2.6m)	2250 lbs. (1021kg)	80 - 100
VBL-17R	17' (5.2m)	17'6" (5.3m)	8'6" (2.6m)	2345 lbs. (1064kg)	85 - 105
VBL-18R	18' (5.4m)	18'6" (5.6m)	8'6" (2.6m)	2440 lbs. (1107kg)	90 - 110



3pt. Hitch will accept CAT II, CAT III, CAT II Quick Hitch, CAT III Narrow Quick Hitch

* Berm scrapers are optional.

BANTAM LEVELER

Model	Size	Overall Width	Dry Weight	Weight w/Water	Approx. HP
BOL 080	8' (2.4m)	8'6" (2.6m)	2410 lbs. (1093kg)	3460 lbs. (1569kg)	40 - 50
BOL 090	9' (2.7m)	9'6" (2.9m)	2520 lbs. (1143kg)	3700 lbs. (1678kg)	45 - 55
BOL 100	10' (3.0m)	10'6" (3.2m)	2630 lbs. (1193kg)	3940 lbs. (1787kg)	50 - 60
BOL 110	11' (3.4m)	11'6" (3.5m)	2740 lbs. (1243kg)	4180 lbs. (1896kg)	55 - 65
BOL 120	12' (3.7m)	12'6" (3.8m)	2850 lbs. (1293kg)	4420 lbs. (2005kg)	60 - 70
BOL 130	13' (4.0m)	13'6" (4.1m)	2960 lbs. (1343kg)	4660 lbs. (2114kg)	65 - 75
BOL 140	14' (4.3m)	14'6" (4.4m)	3070 lbs. (1393kg)	4900 lbs. (2223kg)	70 - 80
BOL 150	15' (4.6m)	15'6" (4.7m)	3180 lbs. (1442kg)	5140 lbs. (2331kg)	75 - 90
BOL 160	16' (4.9m)	16'6" (5.0m)	3290 lbs. (1492kg)	5380 lbs. (2440kg)	90 - 105

**MODEL 77 LEVELER**

Model	Size	Tube & Ring Size	Weight	Turning Radius	Approx. HP
OL10101216	10' (3.0m)	10 - 12/16	5240 lbs. (2377kg)	16' (4.9m)	55 - 65
OL10121420	10' (3.0m)	12 - 14/20	6050 lbs. (2744kg)	16' (4.9m)	55 - 65
OL11101216	11' (3.4m)	10 - 12/16	5520 lbs. (2504kg)	17' (5.2m)	60 - 70
OL11121420	11' (3.4m)	12 - 14/20	6410 lbs. (2908kg)	17' (5.2m)	60 - 70
OL12101216	12' (3.7m)	10 - 12/16	5800 lbs. (2631kg)	18' (5.5m)	65 - 75
OL12121420	12' (3.7m)	12 - 14/20	6770 lbs. (3071kg)	18' (5.5m)	65 - 75
OL14101216	14' (4.3m)	10 - 12/16	6320 lbs. (2867kg)	20' (6.1m)	75 - 90
OL14121420	14' (4.3m)	12 - 14/20	7450 lbs. (3379kg)	20' (6.1m)	75 - 90
OL15101216	15' (4.6m)	10 - 12/16	6800 lbs. (3084kg)	22' (6.7m)	85 - 100
OL15121420	15' (4.6m)	12 - 14/20	8100 lbs. (3874kg)	22' (6.7m)	85 - 100



Schmeiser reserves the right to make improvements in design and changes in specifications at any time without incurring any obligation to install them on units previously sold.

T. G. SCHMEISER CO., INC.

www.tgschmeiser.com • sales@tgschmeiser.com • 800-288-8128



RIPPERS

Your Ground Opening Solution



T.G. SCHMEISER®



C-SERIES RIPPER

The undisputed heavy-weight 3 point ripper, designed to support Down Pressure Rollers and other gauging devices.



PULL-TYPE RIPPER

Easy to use single point depth control and auto reset gauge wheels make this the best pull-type ripper on the market. Massive construction is designed to be pulled by high horsepower tractors.



S-SERIES RIPPER

Rugged CAT III & IV hitch along with easy to use severe-duty gauge wheels make this the most requested ripper in the Schmeiser line. 7x7 and 5x7 tubing used throughout with 1" thick pockets of T-1 material to add to the machine's strength and reliability.



VINEYARD RIPPER

Rugged and reliable, this is the most robust vineyard ripper made. The Vineyard Ripper features 6x6 tubing, virtually indestructible 3 point hitch, extra thick pockets and scored shear bolts for extended wear life.



FINISHING RIPPER CHISEL

The perfect tool for secondary tillage work in heavy soils. The Schmeiser Finishing Ripper Chisel is ideal for opening up ground for aeration.

RUGGED

Built to last, Schmeiser Rippers are made for-severe duty applications. Featuring the ultimate in durability and performance, they are available in a wide range of shank and spacing configurations.

SCHMEISER'S STAGGERED "W" SHANK PATTERN

The Staggered "W" shank pattern allows additional distance between shanks for more efficient pulling, better trash flow and soil fracture.



"L" SHANK DESIGN

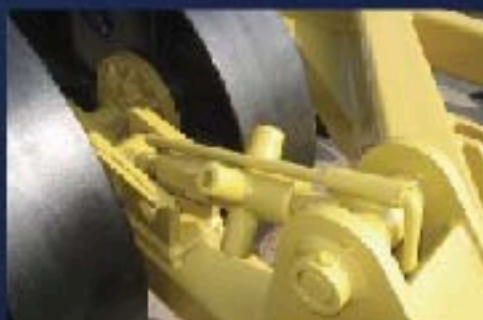
The concept of the Schmeiser "L" Shank is to thoroughly rip the soil and minimize the amount of surface area disturbed. Less sub-surface clods are brought to the top, resulting in minimal ridging left from each shank.



- Massive 3 point hitch framework is constructed of T-1 material. All rippers are designed to easily hook up to conventional 3 point hitches and quick hitches.
- Heavy-duty main frames with 3/8" and 1/2" wall tubing are virtually indestructible.
- T-1 material shank pockets are super tough. This material has superior weldability that ensures pockets will not separate from main frame.



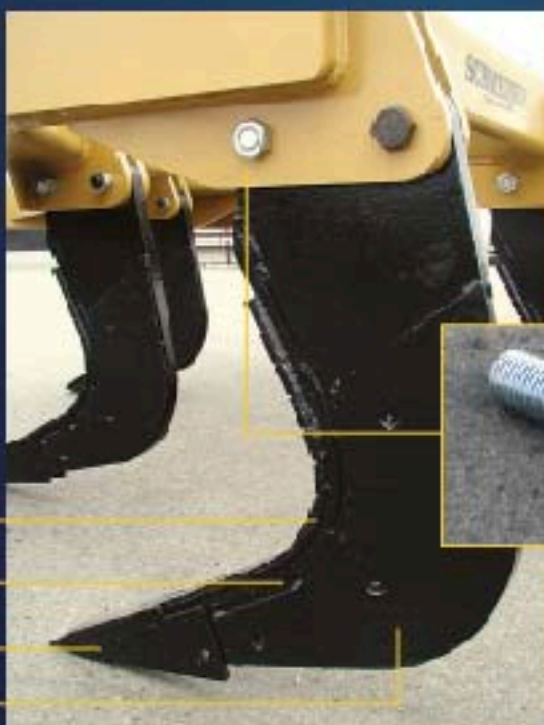
- Chrome points and shins are made of the highest quality domestic alloys for excellent wear characteristics. These parts are made in the USA and are very consistent in wear and dependability.



- Easy to adjust, easy to use gauge wheel cranks with 1-1/2" acme thread turnbuckles.

SHANKS

Rugged shanks designed for your specialized ripping needs work in conjunction with Schmeiser points to assure in-field performance. The business end of any ripper is the shank and point combination. Every Schmeiser shank and point is manufactured in our plant to our exacting standards. Quality steel and craftsmanship guarantee that the frame pockets, shanks and points all fit and perform perfectly.



Scored Shear Bolts are designed to snap off instead of tearing, allowing for easier and quicker replacement with less damage to pockets.

Chrome
Replaceable Shin (1-1/2" Shank)
Point
Optional Wear Guard



SHANKS

		Vineyard	S-Series	C-Series	P-Series
27"x1-1/4" Shank	Standard	Yes			
	Parabolic	Yes			
	"L" Style	Yes			
31"x1-1/4" Shank	Standard	Yes			
	Parabolic	Yes			
	"L" Style	Yes			
34"x1-1/4" Shank	Standard	Yes			
	Parabolic	Yes	Yes		
	"L" Style	Yes	Yes		
36"x1-1/2" Shank	Parabolic "L" Style		Yes	Yes	Yes
			Yes	Yes	Yes
38"x1-1/2" Shank	Parabolic "L" Style		Yes	Yes	Yes
			Yes	Yes	Yes
Point		VRP125	RSP34 RSP36	RSP36	RSP36

VINEYARD RIPPERS

The heavy-duty Schmeiser 3 Point Vineyard Ripper is designed to maximize ripping in vineyards just like yours. Available with three shank options, the Vineyard Ripper may be ordered with "L" shanks, parabolic shanks or standard shank designs.



Standard features:

- 6"x6" structural tubing
- 1-1/4" shanks with high carbon steel
- Heavy duty 1-1/4" chrome points
- Chrome shin guard
- CAT II hitch and quick hitch
- 27", 31" or 34" shank options
- Parking stand
- 30" shank spacing

Options:

- Rear trail hitch
- Till an' Pak frame mount

Note: 34" shank models may require tractors with high lift 3 point hitch capacities



Shown with optional Rear Trail Hitch

S-SERIES RIPPER



Schmeiser's staggered shank design provides better ripping characteristics with less horsepower on your tractor.

Standard features include:

- CAT III & IV quick hitch
- 3 point massive hitch
- 1" thick T-1 pockets
- Easy to adjust gauge wheels with 1-1/2" acme thread cranks
- 20", 22", 24" and 30" shank spacing

SSR36 Model

- 7"x7" structural tubing
- "L" Shank design 1-1/2"x36" high carbon steel
- 1-1/4" grade 8 swing bolts
- Shear bolt protection

SSR34 Model

- 5"x7" structural tubing
- "L" Shank design 1-1/4"x34" high carbon steel
- 1-1/8" grade 8 swing bolts
- Shear bolt protection



Options

- Extra pockets
- Parabolic shanks 36" & 38"
- Shank wear guards
- Rear hitch





C-SERIES RIPPER

THE UNDISPUTED HEAVY-WEIGHT CHAMP!

The C-Series is designed to support the Down Pressure Roller as well as other gauging devices.

Standard features include:

- CAT III & IV hitch and quick hitch
- T-1 steel on all ripper pockets and 3 point connections
- Staggered shank design
- Available with 5 or 7 shanks
- Special reinforced main frame for Down Pressure Roller applications
- 7"x7"x1/2" wall structural tubing
- "L" Shank design 1-1/2"x36" high carbon steel
- 1-1/4" grade 8 swing bolts
- 1-1/4" grade 5 grooved shear protection
- 20", 22", 24" and 30" shank spacing

Options

- Down Pressure Roller
- Extra pockets
- Parabolic shanks 36" and 38"
- Shank wear guards
- Rear hitch



P-SERIES RIPPER



Designed to be pulled behind high horsepower tractors, Schmeiser's pull-type rippers are massive in construction, easy to use, and feature exclusive auto reset gauge wheels.

Standard features include:

- 7"x7"x1/2" wall structural tubing
- "L" Shank design 1-1/2"x36" high carbon steel
- 1-1/4" grade 8 swing bolts
- 1-1/4" grade 5 grooved shear bolt protection
- Single point depth control gauging
- Exclusive gauge wheel auto phase reset system
- 10-bolt oil bath hubs
- 385/65R 22.5 recap tires with 18x24 steel wheels
- Welded lift cylinders with transport locks
- Schmeiser engineered counter weight for proper tongue weight and balance

Options:

- Detachable tongue
- Extra pockets
- Parabolic shanks 36" or 38"
- Shank wear guards
- Down Pressure Roller & counter weight
- Rear hitch



FINISHING RIPPER CHISEL

THE SCHMEISER FINISHING RIPPER CHISEL IS THE SOLUTION TO LOOSEN THE TOP 12"-15" OF SOIL.

The perfect tool for secondary tillage work in heavy soils. The Schmeiser Finishing Ripper Chisel is ideal for opening up ground for aeration. Put a twist point on the chisel shank and it becomes the right tool for rice stalk incorporation. Available in 2 or 3 bars with shanks on 12" effective spacings.



FINISHING RIPPER CHISEL

MODEL	WIDTH	DESCRIPTION	# OF SHANKS	SPACING	APPROX. WEIGHT
SFC-213	13'	2 Bar Model	13	12"	3,000 lbs.
SFC-215	15'	2 Bar Model	15	12"	3,300 lbs.
SFC-217	17'	2 Bar Model	17	12"	3,600 lbs.
SFC-219	19'	2 Bar Model	19	12"	3,900 lbs.
SFC-221	21'	2 Bar Model	21	12"	4,200 lbs.
SFC-223	23'	2 Bar Model	23	12"	4,500 lbs.
SFC-225	25'	2 Bar Model	25	12"	4,800 lbs.
SFC-313	13'	3 Bar Model	13	12"	3,200 lbs.
SFC-315	15'	3 Bar Model	15	12"	3,600 lbs.
SFC-317	17'	3 Bar Model	17	12"	4,300 lbs.
SFC-319	19'	3 Bar Model	19	12"	4,600 lbs.
SFC-321	21'	3 Bar Model	21	12"	4,900 lbs.
SFC-323	23'	3 Bar Model	23	12"	5,250 lbs.
SFC-325	25'	3 Bar Model	25	12"	5,600 lbs.

MODEL	WIDTH	DESCRIPTION	# OF SHANKS	SPACING	TRANS WIDTH
SFC-321F	21'	3 Bar Folding	21	12"	13'10"
SFC-323F	23'	3 Bar Folding	23	12"	13'10"
SFC-325F	25'	3 Bar Folding	25	12"	13'10"
SFC-327F	27'	3 Bar Folding	27	12"	13'10"

Standard features include:

- Category III & IV narrow, 3 point quick hitch mountable
- Available in two and three bar configurations
- Specially reinforced frame for gauging
- 5"x5" heavy wall structural tubing
- Welded pockets equipped with shear bolts
- 1-1/4"x30" shanks on 12" spacing
- 3/4"x15" reversible alfalfa spike points (2-1/4" bolt spacing)
- 36" bar spacing for optimum trash flow

Options

- Standard-duty gauge wheels with 9.5"x15" implement rib tires
- Heavy-duty gauge wheels with 12.5"x16" implement rib tires
- Heavy-duty gauge wheels with dual steel wheels
- Heavy-duty gauging cranks (acme thread EZ adjust)
- Heavy-duty trail hitch - folding for 3 bar models
- Available 13' to 27' wide
- Folding models available

CRUMBLER

The Schmeiser Crumbler breaks up the clods left behind from deep soil ripping and checks the soil for optimum water distribution.



Top: Spiral Blade Crumbler



Left: Straight Blade Crumbler

CRUMBLER - STRAIGHT PADDLE

MODEL	WIDTH	# OF PADDLES	WEIGHT
CS7-144	12'	7	2,288 lbs.
CS7-156	13'	7	2,452 lbs.
CS7-168	14'	7	2,615 lbs.
CS7-180	15'	7	2,755 lbs.
CS7-192	16'	7	2,965 lbs.
CS7-204	17'	7	3,181 lbs.

For use with S-Series and P-Series Rippers.

P-Series Rippers must use counterweight option #CWC

CRUMBLER - SPIRAL PADDLE

MODEL	WIDTH	# OF PADDLES	WEIGHT
CSS-144	12'	5	2,467 lbs.
CSS-156	13'	5	2,540 lbs.
CSS-168	14'	5	2,613 lbs.
CSS-180	15'	5	2,748 lbs.
CSS-192	16'	5	2,951 lbs.
CSS-204	17'	5	3,123 lbs.

For use with S-Series and P-Series Rippers.

P-Series Rippers must use counterweight option #CWC



DOWN PRESSURE ROLLER

TACKLES TOUGH SOIL CONDITIONS, REDUCES DISCING COSTS AND LEAVES YOUR FIELD SMOOTHER.

The Schmeiser Down Pressure Roller acts as a giant gauge wheel: its teeth tear 6" deep into the soil, pulverizing and smoothing out ripped ground. Large, tough clods are crushed instead of being pushed back to the subsurface. Additional discing operations are reduced, saving fuel, time and money.



Standard features include:

- Specially reinforced frame for gauging all Down Pressure Roller applications
- Special heavy-duty 16"x28" star rings
- Severe-duty greaseable bearings
- Heavy-duty ring scrapers
- Auto lift to insure a smooth pick-up
- Easy hand adjustment with exclusive turnbuckle design
- Compatible with C & P Series Schmeiser Rippers



DOWN PRESSURE ROLLER

MODEL	WIDTH	WEIGHT
DPR-120	10'	4,648 lbs.
DPR-144	12'	4,915 lbs.
DPR-156	13'	5,242 lbs.
DPR-168	14'	5,513 lbs.
DPR-180	15'	5,783 lbs.
DPR-192	16'	5,783 lbs.
DPR-204	17'	6,234 lbs.

For use on C-Series and P-Series Rippers only;
P-Series Rippers must use counterweight option 4CWD

S-SERIES - 3 POINT

Model	# of Shanks	Spacing	Shank Size		Weight (lbs.)
S53424	5	24"	1-1/4"x34"	"L" Shank and Parabolic Shank available	5082
S53430	5	30"	1-1/4"x34"	"L" Shank and Parabolic Shank available	5145
S73420	7	20"	1-1/4"x34"	"L" Shank and Parabolic Shank available	5905
S73422	7	22"	1-1/4"x34"	"L" Shank and Parabolic Shank available	5984
S73424	7	24"	1-1/4"x34"	"L" Shank and Parabolic Shank available	7045
S73430	7	30"	1-1/4"x34"	"L" Shank and Parabolic Shank available	6512
S53624	5	24"	1-1/2"x36"	"L" Shank and Parabolic Shank available	6082
S53630	5	30"	1-1/2"x36"	"L" Shank and Parabolic Shank available	6124
S73620	7	20"	1-1/2"x36"	"L" Shank and Parabolic Shank available	6908
S73622	7	22"	1-1/2"x36"	"L" Shank and Parabolic Shank available	7054
S73624	7	24"	1-1/2"x36"	"L" Shank and Parabolic Shank available	7255
S73630	7	30"	1-1/2"x36"	"L" Shank and Parabolic Shank available	7788

Complete with CAT III & IV 3pt. hitch and quick hitch, dual gauge wheels with (4) 7"x30" steel wheels, chrome points and replacement shins. Crumbler attachment available. 1-1/2" x 34" Parabolic and "L" Shank available.

**C-SERIES - 3 POINT**

C53624	5	24"	1-1/2"x36"	"L" Shank and Parabolic Shank available	4600
C53630	5	30"	1-1/2"x36"	"L" Shank and Parabolic Shank available	4867
C73620	7	22"	1-1/2"x36"	"L" Shank and Parabolic Shank available	5798
C73622	7	24"	1-1/2"x36"	"L" Shank and Parabolic Shank available	5972
C73624	7	24"	1-1/2"x36"	"L" Shank and Parabolic Shank available	6076
C73630	5	30"	1-1/2"x36"	"L" Shank and Parabolic Shank available	6585

Complete with CAT III & IV hitch and quick hitch, 3"x12" chrome points and replaceable shins. Gauge wheel not available on this unit. Designed for use with Down Pressure Roller.

**P-SERIES - PULL TYPE ("D" designation signifies Detachable)**

P53630	5	30"	1-1/2"x36"	"L" Shank and Parabolic Shank available	9218
P53630D	5	30"	1-1/2"x36"	"L" Shank and Parabolic Shank available	9432
P73622	7	22"	1-1/2"x36"	"L" Shank and Parabolic Shank available	9218
P33622D	7	22"	1-1/2"x36"	"L" Shank and Parabolic Shank available	9406
P73624	7	24"	1-1/2"x36"	"L" Shank and Parabolic Shank available	9218
P73624D	7	24"	1-1/2"x36"	"L" Shank and Parabolic Shank available	9396

Complete with geared flow divider, auto rephase gauge wheels, single point depth control gauge, 3"x12" chrome points and shins. Lead hoses included. Available with Down Pressure Roller or Crumbler. Be sure to order appropriate counterweight.

**V-SERIES - VINEYARD MODEL**

VR327S	3	30"	1-1/4"x27"	V-Series - Standard Shank	1050
VR327P	3	30"	1-1/4"x27"	V-Series - Parabolic Shank	1075
VR327L	3	30"	1-1/4"x27"	V-Series - "L" Shank design	1104
VR331S	3	30"	1-1/4"x31"	V-Series - Standard Shank	1102
VR331P	3	30"	1-1/4"x31"	V-Series - Parabolic Shank	1127
VR331L	3	30"	1-1/4"x31"	V-Series - "L" Shank design	1154
VR334S	3	30"	1-1/4"x34"	V-Series - Standard Shank	1150
VR334P	3	30"	1-1/4"x34"	V-Series - Parabolic Shank	1175
VR334L	3	30"	1-1/4"x34"	V-Series - "L" Shank design	1202

Category II or CAT II quick hitch. 6X6 main frame construction. 2-1/4"x7-1/2" chrome point standard.



T. G. SCHMEISER CO., INC.

P.O. Box 1047 • Fresno, CA 93714 • 559/268-8128 • FAX 559/268-3279

www.tgschmeiser.com • sales@tgschmeiser.com

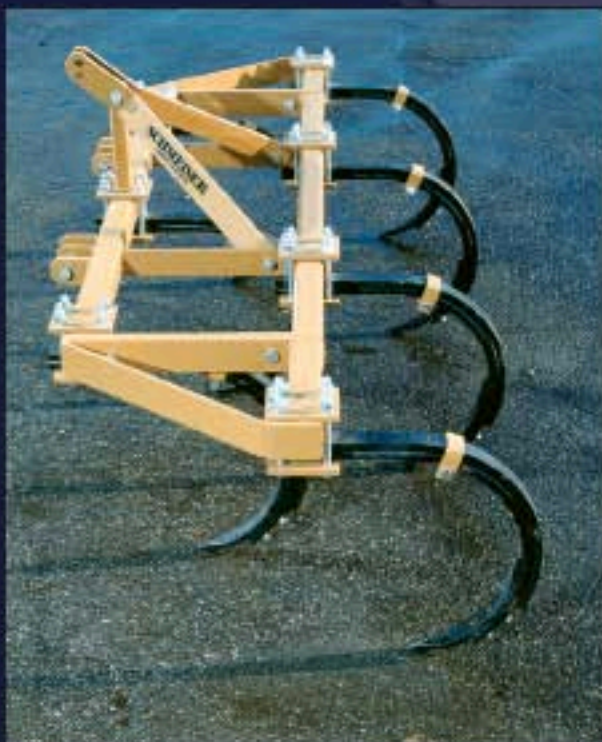


3-POINT CULTI-PLOW™



HCP 312 Model with Gauge Wheels and Rear Trail Hitch

The Schmeiser 3-Point Culti-Plow breaks up soil compaction and plow pan, providing growers with a corrugated finish that channels water to help penetrate the subsoil.



FOR OPEN FIELDS

The design of the Culti-Plow leaves stubble growth on top and reduces evaporation. Deep soil is thoroughly loosened all the way across the working width, not just along the slicing straight lines.

FOR VINEYARDS AND ORCHARDS

T.G. Schmeiser's vibrating shanks open compacted ground for better water penetration and help increase soil aeration.

FOR FURROW CONSTRUCTION

Each Culti-Plow shank is easily adaptable to sweeps, shovels and other style points. Each shank features industry standard mountings for quick attachment of many popular point styles.

FOR DEEP CHISELING

The versatile Culti-Plow chisels at depths up to 18".

CP SERIES - 2-BAR MODEL

Schmeiser's exclusive double shank combination gives additional strength and flexibility to the Culti-Plow™. The design features a secondary shank - similar to a car's leaf spring - on the back of each primary shank. This configuration allows for deeper penetration and increased shank vibration to help break up even heavily compacted soils.



6CP-3 Model with Extensions



THE RIGHT IMPLEMENT FOR THE JOB

The Schmeiser Culti-Plow is available in 5-shank (4', 5' and 6' wide) and 7-shank (7' and 8') wide models. Shanks are spaced equally apart and may be adjusted for special applications. Extensions are available to expand the Culti-Plow to 10' in width.



LIGHT DUTY CULTI-PLOWS ALSO AVAILABLE

For tillage and utility applications, Schmeiser offers a single shank Culti-Plow to bring all the advantages of the implement for lighter needs.

HCP SERIES - 3-BAR MODEL



HCP 312 Model

EXPLODES SOIL AND PLOW PAN



Optional Gauge Wheel Assembly



Triple Shank Assembly is standard on all 3-Bar models

Designed to meet your field's special needs - available in widths from 10' to 20'.

Triple Shank allows the unit to flex, yet is rugged enough to work in the most severe duty applications.

MODEL SPECIFICATIONS

CP SERIES (2 Bar Model)

Model #	Width	# of Shanks	Ground Clearance	Shank Combination	Weight
4CP-1	4 ft.	5 shank sets	22"	Single - 1" x 2"	413 lbs.
4CP-3	4 ft.	5 shank sets	22"	Double - 1"x2" & 3/4"x2"	508 lbs.
5CP-1	5 ft.	5 shank sets	22"	Single - 1" x 2"	438 lbs.
5CP-3	5 ft.	5 shank sets	22"	Double - 1"x2" & 3/4"x2"	533 lbs.
6CP-1	6 ft.	5 shank sets	22"	Single - 1" x 2"	463 lbs.
6CP-3	6 ft.	5 shank sets	22"	Double - 1"x2" & 3/4"x2"	558 lbs.
7CP-1	7 ft.	7 shank sets	22"	Single - 1" x 2"	520 lbs.
7CP-3	7 ft.	7 shank sets	22"	Double - 1"x2" & 3/4"x2"	647 lbs.
8CP-1	8 ft.	7 shank sets	22"	Single - 1" x 2"	545 lbs.
8CP-3	8 ft.	7 shank sets	22"	Double - 1"x2" & 3/4"x2"	672 lbs.

All above units have Cat I and II Hitch. Cat I and II Quick Hitch adaptable

CP Series - 2 Bar Available Options

CP-1 EX	1 ft. Extensions (single 1" x 2" shank) (one pair)	178 lbs.
CP-3 EX	1 ft. Extensions (double 1" x 2" and 3/4" x 2" shank) (one pair)	216 lbs.
CP-THTP	Rear Trail Hitch - to pull Tillage and Pak behind Cult-Plow	35 lbs.
3CP-RH	Rear Trail Hitch - Heavy Duty	65 lbs.

HCP SERIES (3 Bar Model)

Model #	Width	# of Shanks	Ground Clearance	Shank Combination	Weight
HCP310	10 ft.	9 shank sets	22"	Triple - 1", 3/4" & 3/4"	1575 lbs.
HCP312	12 ft.	11 shank sets	22"	Triple - 1", 3/4" & 3/4"	1811 lbs.
HCP314	14 ft.	13 shank sets	22"	Triple - 1", 3/4" & 3/4"	2047 lbs.
HCP316	16 ft.	15 shank sets	22"	Triple - 1", 3/4" & 3/4"	2283 lbs.
HCP318	18 ft.	17 shank sets	22"	Triple - 1", 3/4" & 3/4"	2519 lbs.
HCP320	20 ft.	19 shank sets	22"	Triple - 1", 3/4" & 3/4"	2755 lbs.

All units have triple stacked combination with 1"x2" primary shank and (2) 3/4"x2" backup shanks.

All units are complete with 3 bars (4"x4" tubing).

All above units have Cat II and III Hitch. Cat II, III and IIIN Quick Hitch adaptable.

HCP Series - 3 Bar Available Options

HCPGW	Adjustable Gauge Wheels with 9.50 x 15 tires and ratchet cranks(one pair)	375 lbs.
HCPRH	Rear Trail Hitch - Heavy Duty	125 lbs.

Schmeiser reserves the right to make improvements in design and changes in specifications at any time without incurring any obligation to install them on units previously sold.



T. G. SCHMEISER® CO., INC.

www.tgschmeiser.com • sales@tgschmeiser.com • 1-800-288-8128



INTRODUCING THE NEW **Smart-Till® Orchard MAX**

BY T.G. SCHMEISER



Patented Smart-Till tines fracture soil 8" deep with little surface disturbance!

Benefits:

- MAXimize water penetration
- Reduce soil compaction
- Incorporate gypsum and compost
- Fast! 6-8 mph reduces cost per acre

Features:

- Sealed bearings for easy maintenance
- Available in 8' - 18' widths



SCHMEISER
FARM EQUIPMENT

www.TGSCHMEISER.com

(559) 268-8128

TANDEM DISCS

The Solution for Vineyard and Orchard Discing



T.G. SCHMEISER®

- **RUGGED**
- **EASY TO USE**
- **EASY TO ADJUST**



Quick and Easy Pin Adjust



1-3/4" Heavy-Duty Trunnion Bearings



Spring Compression Washer

The T. G. Schmeiser tandem discs are massively built to meet every vineyard orchard discing need required in efficient weed control. They feature heavy-duty adjustable gangs that can be easily changed in the field without returning to your shop.

Less downtime and more productivity.

Built to last, easy to use – that's the Schmeiser way.



TSN-10 Model shown



TANDEM SUPER NARROW VINEYARD DISC TSN

Good things do come in small packages.

With a 2'5" - 5'6" cutting width, the versatile Tandem Super Narrow Vineyard Disc offers all the performance of our bigger discs in a more maneuverable compact size.

Standard Features:

- 22" x 5mm disc blades on 9" spacing
- 3x3 main frame tubing
- Exclusive taper frame design
- Adjustable middle buster
- Adjustable gangs; 0-6-12-18-24" range
- 1-3/4" axles with spring tension washers
- Trunnion mount self-aligning triple lip bearings
- Bearing wear plates
- CAT I and II and CAT II Quick Hitch
- Reinforced top link
- 8 to 12 blades

Options:

- Easy-to-adjust scraper blades
- Till an' Pak Trail Hitch
- "Add-A-Blade" extensions
- Notched blades
- Dirt diverters
- Cane deflectors

REVERSIBLE TANDEM VINEYARD DISC RTM

The Built-To-Take-It Medium-Duty Unit Rivals Competitors' Heavy-Duty Models!

The flexible Schmeiser RTM is the perfect balance of usable weight and practicality that's ideal for a full range of vineyard applications.

Standard Features:

- 22" x 5mm disc blades on 9" spacing
- 3x3 main frame tubing
- Exclusive taper frame design
- Adjustable middle buster with two mount locations
- Adjustable gangs; 0-30' range
- Easy-to-reverse 3-point hitch
- 1-3/4" axles with spring tension washers
- Trunnion mount self-aligning triple lip bearings
- Bearing wear plates
- CAT I and II and CAT II Quick Hitch
- Reinforced top link
- 12 to 18 blades

Options:

- Easy-to-adjust scraper blades
- Dirt diverters
- Cane deflectors
- Tool bar or Till an' Pak attachment
- "Add-A-Blade" extensions



Shown with optional easy-to-adjust mud scrapers



Shown with modular dirt deflector

REVERSIBLE TANDEM VINEYARD DISC RTH

The Heavy-Duty Performer for Demanding Vineyard Conditions

Built to traditional Schmeiser standards of quality, the RTH meets the needs of growers that require up to a 10' wide cutting width and count on heavy-duty performance and reliability.

Standard Features:

- 24" x 6mm disc blades on 9" spacing
- 4x4 main frame tubing
- Exclusive taper frame design
- Adjustable middle buster with two mount locations
- Adjustable gangs; 0-30' range
- Easy-to-reverse 3-point hitch
- 1-3/4" axles with spring tension washers
- Trunnion mount self-aligning triple lip bearings
- Bearing wear plates
- CAT II and CAT II Quick Hitch
- Reinforced top link

Options:

- Easy-to-adjust scraper blades
- Dirt diverters
- Cane deflectors
- Tool bar or Till an' Pak attachment
- "Add-A-Blade" extensions



Shown in reverse disc setting



PULL-TYPE TANDEM VINEYARD DISC PTM

Heavy-Duty Performance in the Schmeiser Middle-Weight Package.

When you need the versatility of a pull-type middle weight tandem vineyard disc, the Schmeiser PTM with up to a 10' cutting width is your solution.

Standard Features:

- 24" x 5mm disc blades on 9" spacing
- 4x4 main frame tubing
- Adjustable gangs; 0-30° range
- Greaseless Rockshaft system
- 1-3/4" axles with spring tension washers
- Trunnion mount self-aligning triple lip bearings
- Bearing wear plates
- Hose holder and jack stand
- Middle buster
- 3x8 hydraulic depth control cylinder with hoses
- 7.60x15" implement rib tires with removable spindle

Options:

- Easy-to-adjust scraper blades
- Dirt diverters
- Cane deflectors
- Tool bar or Till an' Pak attachment
- Notched blades
- "Add-A-Blade" extensions



PULL-TYPE TANDEM VINEYARD DISC PTH

Heavy-Duty and Built To Last.

The Schmeiser pull-type heavy-weight tandem vineyard disc combines strength, size and pull-type versatility to meet your most challenging demands up to a 10' wide cutting width. For wider needs, "Add-A-Blade" extensions are the ideal solution.

Standard Features:

- 24" or 26" x 6mm disc blades on 9" spacing
- 6x4 main frame tubing with front to rear taper design
- Greaseless Rockshaft design
- Hose holder and jack stand
- Adjustable gangs; 0-30° range
- 1-3/4" axles with spring tension washers
- Trunnion mount self-aligning triple lip bearings
- Bearing wear plates
- Middle buster
- 3x8 hydraulic depth control cylinder with hoses
- 9.50x15" implement rib tires with removable spindle

Options:

- Easy-to-adjust scraper blades
- Tool bar or Till an' Pak attachment
- Dirt diverters
- Cane deflectors
- Notched blades
- "Add-A-Blade" extensions



Choose the Schmeiser Tandem Disc that's right for your needs.

3-PT TANDEM DISC

Model	Number of Blades	Frame Width	Width of Cut @ 18"	Base Weight Lbs.
SUPER NARROW				
TSN-8N	8	3'-9"	2'-5" to 3'-6"	1006
TSN-8	8	4'-7"	2'-5" to 4'-5"	1026
TSN-10	10	4'-7"	3'-10" to 5'-6"	1181
TSN-12	12	4'-7"	3'-10" to 5'-6"	1336



MEDIUM DUTY (REVERSIBLE)

RTM-12N	12	4'-0"	3'-10" to 4'-5"	1715
RTM-12	12	5'-0"	4'-5" to 5'-6"	1754
RTM-14	14	5'-6"	5'-3" to 7'-0"	1895
RTM-16N	16	5'-6"	5'-3" to 7'-0"	1987
RTM-16W	16	7'-2"	5'-3" to 8'-5"	2063
RTM-18	18	7'-2"	6'-9" to 9'-11"	2215



HEAVY DUTY (REVERSIBLE)

RTH-12	12	5'-0"	4'-5" to 5'-6"	2075
RTH-14	14	5'-6"	5'-3" to 7'-0"	2235
RTH-16N	16	5'-6"	5'-3" to 7'-0"	2343
RTH-16W	16	7'-2"	5'-3" to 8'-5"	2431
RTH-18	18	7'-2"	6'-9" to 9'-11"	2500
RTH-20	20	7'-2"	6'-9" to 9'-11"	2570



PULL-TYPE TANDEM DISCS

Model	Number of Blades	Frame Width	Width of Cut at 18"	Base Weight Lbs.
MEDIUM DUTY				
PTM-12	12	60"	4'-2" to 5'-6"	2378
PTM-14	14	66"	5'-3" to 7'-0"	2508
PTM-16N	16	66"	5'-3" to 7'-0"	2600
PTN-16W	16	86"	5'-3" to 8'-5"	2664
PTM-18	18	86"	6'-9" to 9'-11"	2783



HEAVY DUTY

PTH-12-24	12	60"	4'-2" to 5'-6"	3378*
PTH-14-24	14	66"	5'-3" to 7'-0"	3508*
PTH-16N-24	16	66"	5'-3" to 7'-0"	3600*
PTH-16W-24	16	86"	5'-3" to 8'-5"	3664*
PTH-18-24	18	86"	6'-9" to 9'-11"	3783*
PTH-20-24	20	86"	6'-9" to 9'-11"	3900*



* Weight based on 24" smooth blades; 26" diameter blades also available.

Schmeiser reserves the right to make improvements in design and changes in specifications at any time without incurring any obligation to install them on units previously sold.

T. G. SCHMEISER CO., INC.

P.O. Box 1047 • Fresno, CA 93714 • 559/268-8128 • FAX 559/268-3279

www.tgschmeiser.com • sales@tgschmeiser.com

FEMA

TILL AN' PAK™

Versatile Solutions for Progressive Soil Management



T.G. SCHMEISER®

TILL AN' PAK™

Efficient farming operations throughout the country have relied on the dependability of the **SCHMEISER TILL AN' PAK** to meet a wide range of farming demands.

The secret of the **TILL AN' PAK** system lies in the exclusive floating teeth design that reaches into the soil like gentle, yet thorough fingers - breaking and smashing clods, pulverizing, mulching, filling holes and sealing in fertilizers and fumigants. The **TILL AN' PAK** breaks up crust caused by rain or irrigation, yet allows young plants to come through without damage.

Engineered to work in conjunction with many other farm implements, the **TILL AN' PAK** helps save time and money when attached behind a plow or disc, seeder, fertilizer spreader or fumigator. One pass - many jobs. Working harder for your bottom line is the **SCHMEISER** way, and 75 years of Excellence and Performance is your guarantee of quality, long-life life and dependability.



<< PACKING

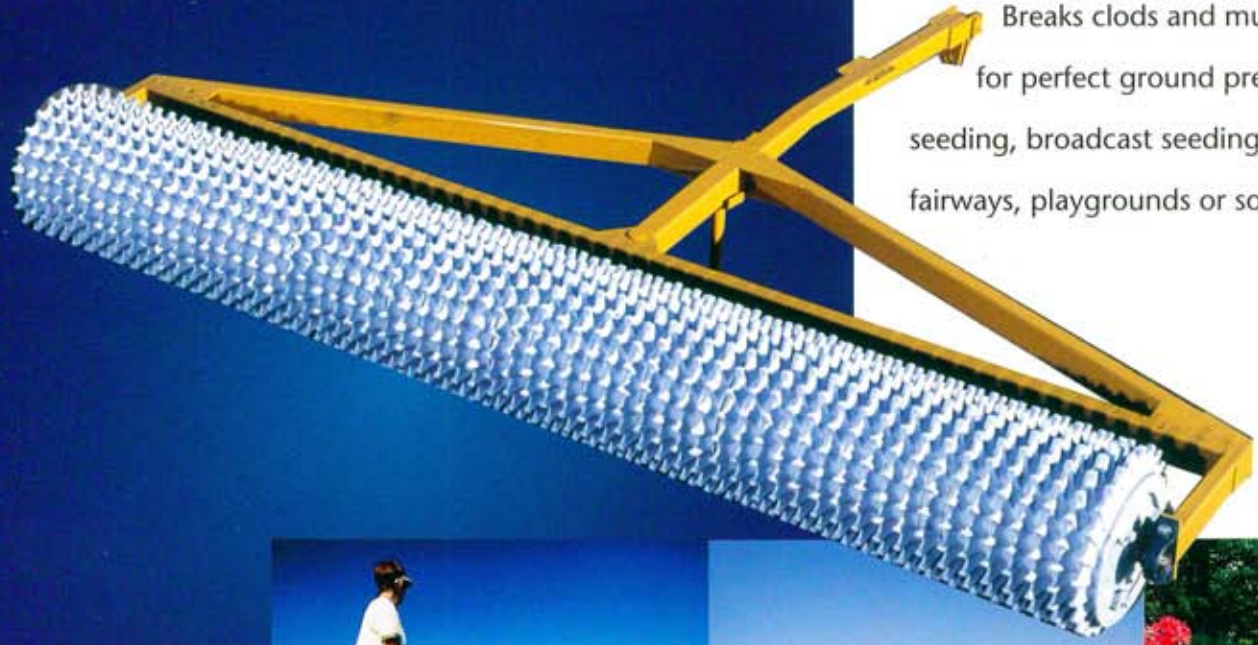
TILLING >>



..... THE VERSATILE LAND WORK SOLUTION

The SCHMEISER TILL AN' PAK is designed to provide a versatile, cost-effective solution to soil working for many industries. Years of proven performance in the demanding agricultural arena, the TILL AN' PAK also brings efficiency and reliability for landscapers, and golf course contractors.

Breaks clods and mulches the soil for perfect ground prep of hydro-seeding, broadcast seeding or sod work on fairways, playgrounds or soccer fields.



Golf Course Construction



Agriculture



Landscape Industry

TILL AN' PAK - GOES WHERE IT'S NEEDED TO GE

FOLDING TILL AN' PAK

Maximum mobility; provides an expanded working width of up to 34' that can be folded for narrow transport. Operator controlled from tractor seat for safety and convenience. Unique valve system allows for uniform and equal motion of the wings. Available in fifteen widths from 20' to 34'; 14/20 ring size standard.

TPP 3510 HYDRAULIC WHEEL KIT

Ideal for more compact narrow wheel applications; fits on existing Till an' Pak frames. Perfect for vineyard or orchard use. Fits units 4' to 10' with 12/16, 13/17 or 14/20 rings.

TPP 3520 TRANSPORT

Bolts on to each end of existing new-style Till an' Paks; provides one-lever convenience for field to transport use. Hydraulic kits available for models up to 14' with 12/16, 13/17 or 14/20 rings.

TPP 3530 TRANSPORT

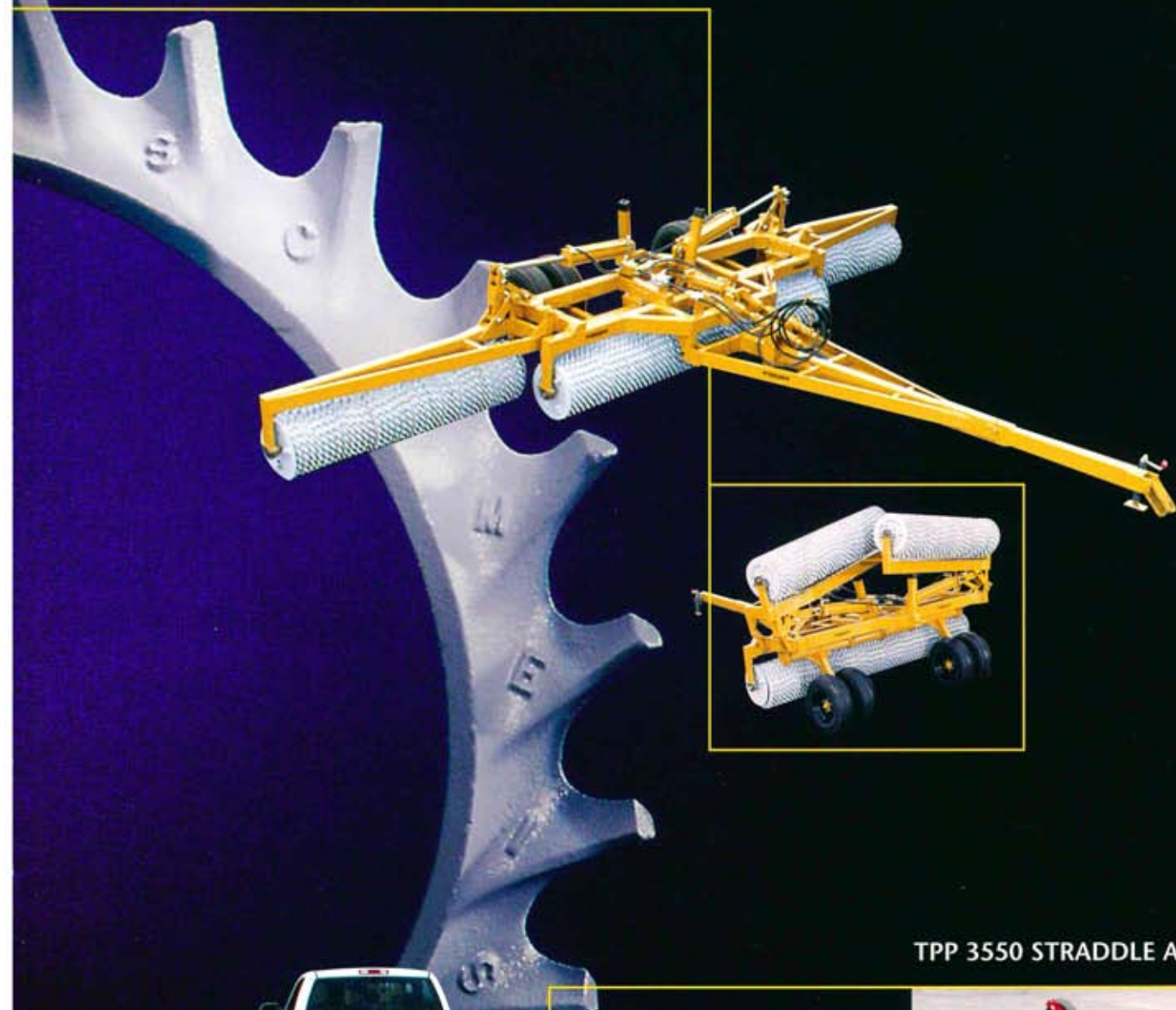
Hydraulic control; offers ample road clearance for mobility; ideal for Till n' Paks being pulled behind a field disc. Two- and four-wheel versions available. Designed for use with new-style Till an' Paks in widths of 14'-24'.

TPP 3540 HYDRAULIC WHEEL CONTROL

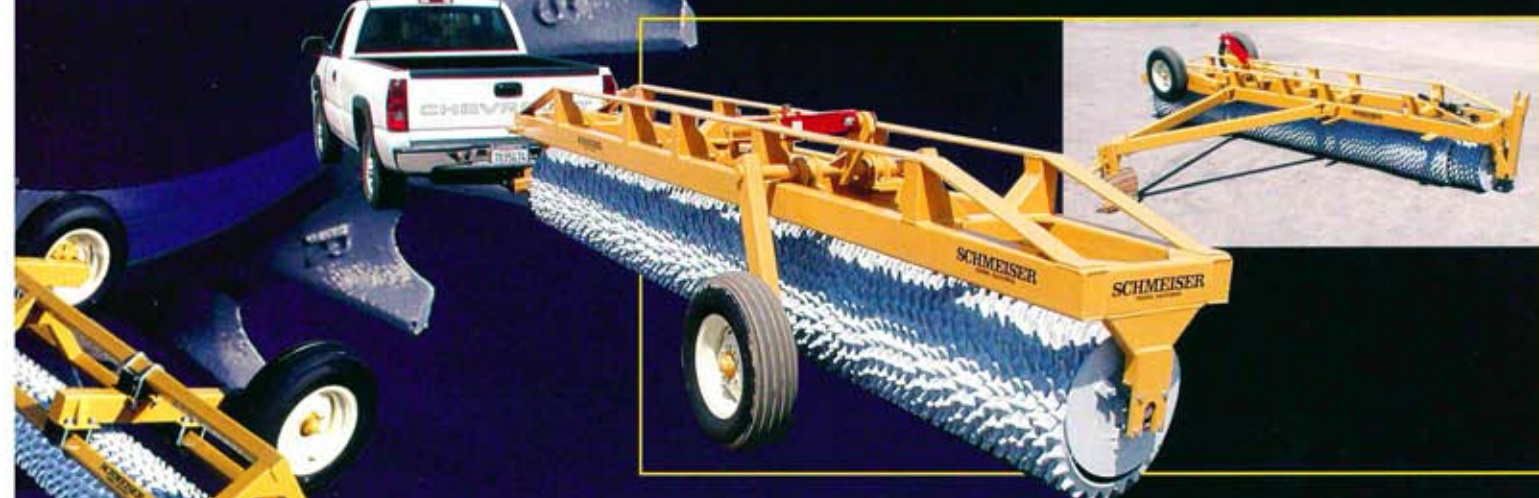
Specially designed top frame and four bolt-on wheel legs for adjustment to any row spacing. Hydraulic depth control - ideal for rolling beds. Wheels lift Till an' Pak high for maximum road clearance. Two versions are offered. Standard and Heavy Duty (for large ring units). Available in sizes from 14' through 24'.



THE JOB DONE



TPP 3550 STRADDLE AXLE



Now, you can pull your Till an' Pak down the narrowest of roads. With only a 5 ft. transport width, the TPP 3550 Straddle Axle is available 16 ft. to 28 ft. wide.

SCHMEISER RINGS™

CHOOSE DOMESTIC TO BE SURE:

EXCLUSIVE CURVED TOOTH DESIGN

Engineered to aggressively till one direction and provide firm packing in the opposite direction.

SMOOTH FINISH

Eliminates rough or porous textures to help reduce soil plugging.

QUALITY HIGH GRADE CAST IRON

Schmeiser rings are cast from the highest quality materials available. Our rings are designed for greater strength and longer wear.

CONSISTENCY

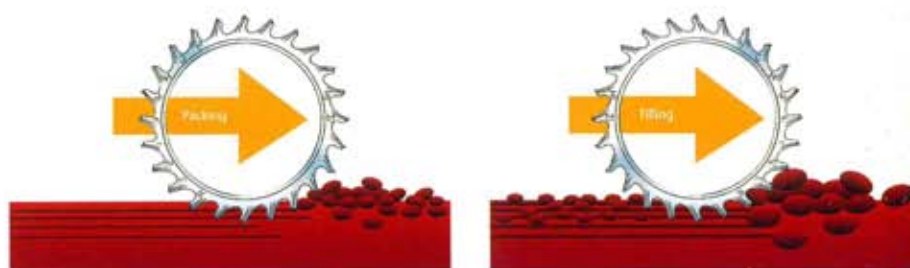
Produced on automated high tech molding machines, each ring is precision cast and cooled for high quality and uniformity.

MADE IN THE U.S.A

Superior quality and consistent supply is guaranteed by Schmeiser; made in America and not in off-shore factories, the name SCHMEISER on the ring is your assurance of the finest product available.

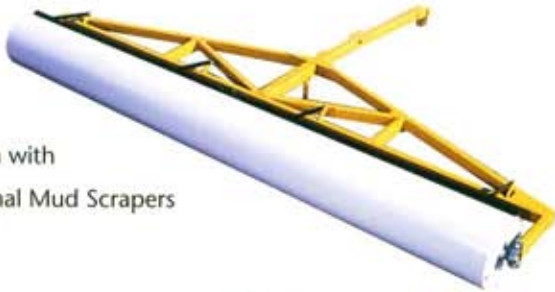
THE RIGHT SIZE FOR THE RIGHT JOB:

SIZE	WEIGHT	CHARACTERISTICS
10/14	14 LBS.	For firm ground with few clods; breaks crust without packing the soil.
12/16	19 LBS.	For ground with small to medium clods; provides a fine, mulched seed bed. Excellent for rolling beds or pulling behind a drill. Our most popular size.
13/17	21 LBS.	For ground with small to medium clods; same characteristics as a 12/16 ring, except 13/17 ring will roll easier in light soil.
14/20	34 LBS.	For medium to large clods in rough soil conditions. Works well in light, sandy soil conditions.
16/22	33.5 LBS.	For large clods in rough conditions and uneven terrain.



ACCESSORIES

Shown with
Optional Mud Scrapers



THE SCHMEISER SMOOTH AN' ROLL – FLAT OUT PERFORMANCE

For use with mechanical harvesting and for firming up seed bed soils; ideal for forcing rocks back into soil. Water-filling increases weight advantage.

THE SCHMEISER FLOAT

Designed in matching widths to attach to existing Till an' Pak frames; ideal for cutting high spots and filling in low spots to help smooth the ground.

3-POINT HITCH

Easily bolts on to existing Till an' Pak pull frame. Allows unit to be used as 3-Point or as a Pull-type roller.

- TPP 3501 3Pt Hitch for Cat 1 & 2
For Till an' Paks and Smooth an' Rolls to 13'
- TPP 3502 3Pt Hitch for Cat 2 & 3
For Till an' Paks and Smooth an' Rolls 14' to 20'

SQUADRON ARM ATTACHMENTS

Easily mounts on standard Till an' Pak frames. Use Till an' Pak squadron units for coverage up to 36 ft. When ordering, specify arm length equal to one half width of trailing Till an' Pak (i.e., 2 ft trailing Till an' Pak: order 12" arms). Not to be used with hydraulic transport kits or other attachments.



BUILD IT YOUR WAY

TILL AN' PAK

Tube Dia	Ring Size	Ring Flex	Lbs. per Foot
8	10/14	1-1/2"	114
8	12/16	3-1/2"	137
8	13/17	4-1/2"	150
8	14/20	5-1/2"	212
8	16/22	7-1/2"	221
10	12/16	1-1/2"	143
10	13/17	2-1/2"	157
10	14/20	3-1/2"	219
10	16/22	5-1/2"	228
12	14/20	1-1/2"	224
12	16/22	3-1/2"	233
14	16/22	5-1/2"	236

Standard Till an' Paks are available in widths from 2' to 24' in single units, and in squadrons of 3' up to 36'.

All units are measured in working widths. Overall width is 8" wider than working width.

A 9 ft unit measures 9'0" in working width and 9'8" in overall width.

When ordering, it is necessary to state working width, tube sizes and ring size.



MISCELLANEOUS ATTACHMENTS

Part	Description	Est. Wt.
TPP 3501	3 Pt. Hitch Cat 1 & 2 (2-13 ft)	80
TPP 3502	3 Pt. Cat 2 & 3 (14-20 ft) Specify Width	105
TPP 3503	Implement Trail Hitch	81

FLOAT

Lbs./Ft.
24

Available from 2 ft to 16 ft wide. Easily bolts onto existing Till an' Pak frame; both new and old style. Float working width and overall width are the same. Order Float size to match the rolling width of the Till an' Pak.

SQUADRON ARMS (PAIR)

Size	12"	18"	24"	30"	36"	42"	48"	54"	60"	66"	72"
T-P Trail Unit Width	2 ft	3 ft	4 ft	5 ft	6 ft	7 ft	8 ft	9 ft	10 ft	11 ft	12 ft
Weight	103	109	115	121	151	160	169	178	187	196	205

Easily attaches to Till an' Pak. When ordering, specify arm length equal to one half width of trailing Till an' Pak (i.e., 2 ft Trailing Till an' Pak: order 12" arms). Not to be used with hydraulic transport kits or other attachments.

HYDRAULIC WHEEL KITS

Part No.	Description	Est. Weight	
TPP 3510	Hydraulic Transport Kit up to 10 ft	350	Lead hoses are an option with all models.
TPP 3520	Hydraulic Transport Kit (End Mount) up to 14'	282	
TPP 3530-2	Hydraulic Transport Kit (8-16 ft) 2 Wheels	875	
TPP 3530-4	Hydraulic Transport Kit (14-20 ft) 4 Wheels	950	Please note: TPP 3540 Hydraulic Kits are only available with Till an' Pak orders.
TPP 3540-2	Adjustable Wheel Kit (8-16 ft) 2 Wheels	1200	
TPP 3540-4	Adjustable Wheel Kit (14-20 ft) 4 Wheels	1500	
TPP 3540-4HD	Adjustable Wheel Kit (18-24 ft) 4 Wheels HD	1800	

FOLDING TILL AN' PAK

Tube Dia	Ring Size	Lbs. per Foot
12	14/20	350

Includes transport and folding hydraulics; (4) tires, cylinders, valves.
Lead hoses not included. Folding Till an' Paks are available up to 34' wide.
Transport width on units 20' to 24': 12'10" – Transport width on units 25' to 30': 14'10"
Transport width on units 31' to 34': 16'10"

SMOOTH AN' ROLL

Roller Dia	Weight Ft/Dry	Gal/Ft	Water Added Wt/Ft	Total Wt/Ft	
20"	114#	16	133#	247#	All units are measured in working widths. Overall width is 8" wider than working width. Mud scrapers are optional.
24"	135#	23	190#	326#	
30"	166#	35	290#	457#	
36"	182#	50	420#	602#	

Schmeiser reserves the right to make improvements in design and changes in specifications at any time without incurring any obligation to install them on units previously sold.

T. G. SCHMEISER CO., INC.

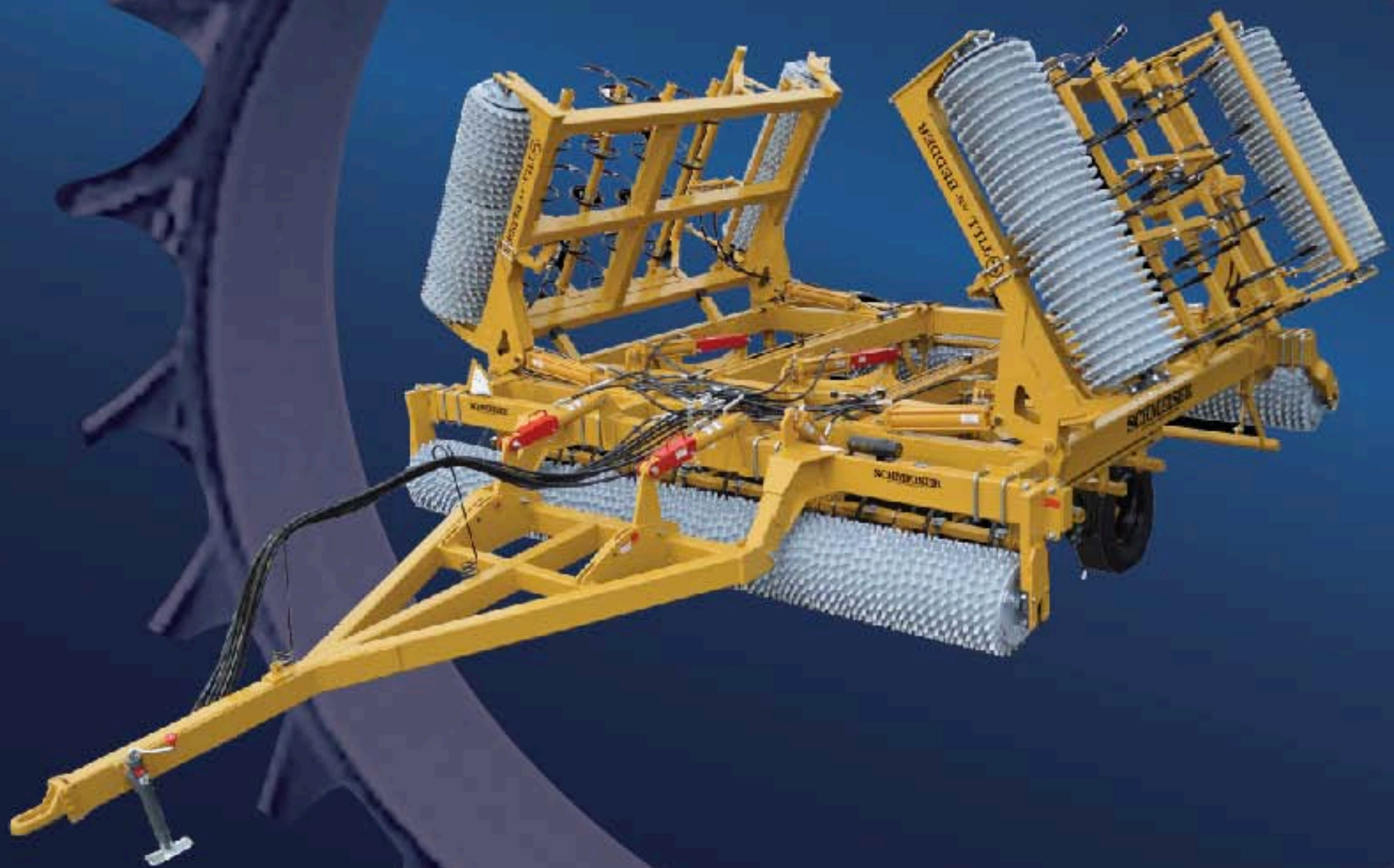
P.O. Box 1047 • Fresno, CA 93714 • 559/268-8128 • FAX 559/268-3279

www.tgschmeiser.com • sales@tgschmeiser.com



TILL AN' BEDDER™

The Solution for Perfect Seed Beds



T.G. SCHMEISER®

SCHMEISER® TILL AN' BEDDER

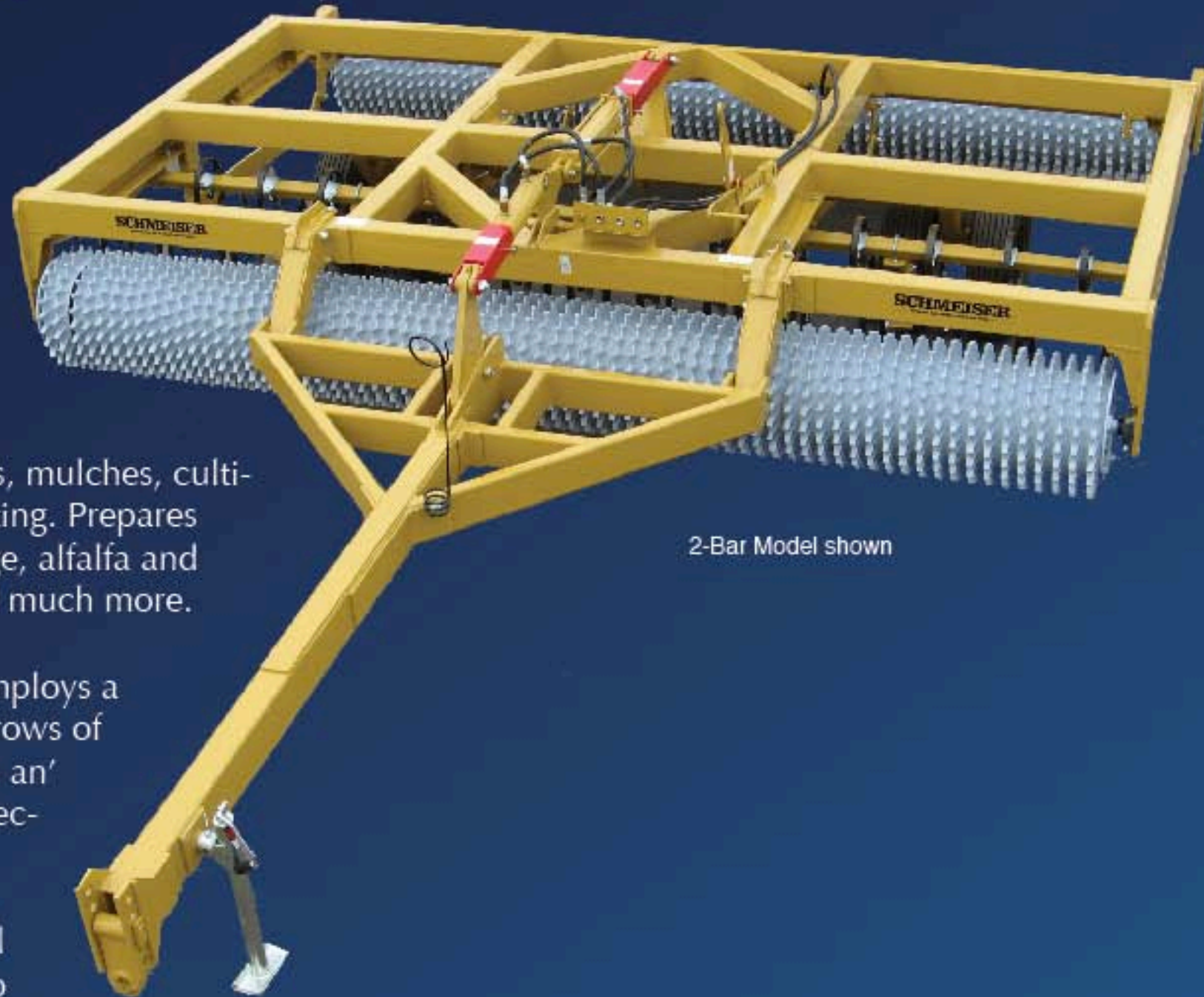
TILL AN' BEDDER - THE COMPLETE TOOL THAT PREPARES YOUR SOIL PERFECTLY FOR SEEDING.

The once over operation that tills, mulches, cultivates, and firms the soil for planting. Prepares the ideal seed bed for corn, silage, alfalfa and grains, potatoes, sugar beets and much more.

The Schmeiser Till an' Bedder employs a front Till an' Pak™ roller, 2 or 4 rows of S-Tines, leveling bar and rear Till an' Pak roller to provide a highly effective combination for superior results. Completely mobile with in-cab hydraulic controls, the Till an' Bedder is available in 12ft. to 30ft. widths with a choice of tubes and rings to fit your individual crop requirements.

The front Till an' Pak ring roller breaks up and crushes large, primary clods. High clearance heavy-duty S-Tines bring up sub-surface clods – eliminating costly wheel and soil compaction. The hydraulic leveling bar knocks ridges left by the S-Tines and spreads soil evenly. The rear Till an' Pak ring roller breaks up remaining clods, firms the soil, smoothes, “pocks” the soil to reduce water evaporation and wind erosion, and leaves the ground ready for planting.

The Till an' Bedder leaves the soil firm and smooth for uniform germination and comfort for multi-pass crops, such as alfalfa. Incorporate chemicals at the same time or hook up a drill behind and save on passes, time and money.



2-Bar Model shown





Folding 4-Bar Model shown with lead hoses

HYDRAULIC FOLDING TILL AN' BEDDER

The Folding Till an' Bedder is the ultimate seed bed machine. Designed for maximum mobility, the Schmeiser Folding Till an' Bedder provides expanded working widths up to 30ft., and folds up for easy transport. Operator controlled from the tractor seat for convenience and safety, the Folding Till an' Bedder incorporates an unique counter balance valve and flow divider mechanism to ensure uniform motion of the wings.

2 BAR AND 4 BAR TILL AN' BEDDERS

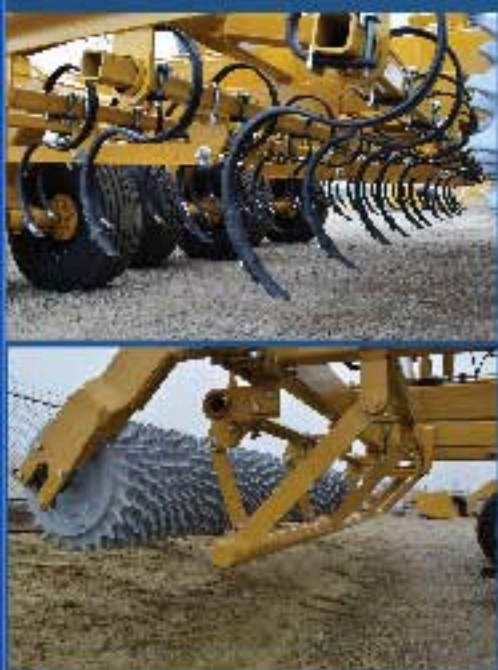
Both styles of Till an' Bedders feature heavy wall main frame construction, heavy-duty S-Tines, hydraulic transport, hydraulic leveling bar and genuine Schmeiser packer rings.

2 Bar units have two row of staggered S-Tines with an overall spacing of 6" apart. This is ideal for making seed beds in clean ground (without trash).

4 Bar machines have four rows of S-Tines with an overall spacing of 4" apart. The spacing on the S-Tines is designed so that the trash will flow through the Till an' Bedder and reduce the chance of plugging.



4-Bar Model shown



HEAVY DUTY S-TINES

All units come standard with Danish style S-Tines. S-Tines will outperform old fashion loop "C" shanks by vibrating more vigorously front and back and side to side. These S-Tines are made of the highest quality spring steel material. S-Tines are 1/2" thick by 1-1/4" wide – much heavier than the industry standard. 1" reversible shovels are standard; other sweeps, points or shovels may be used.

HYDRAULIC LEVELING BAR

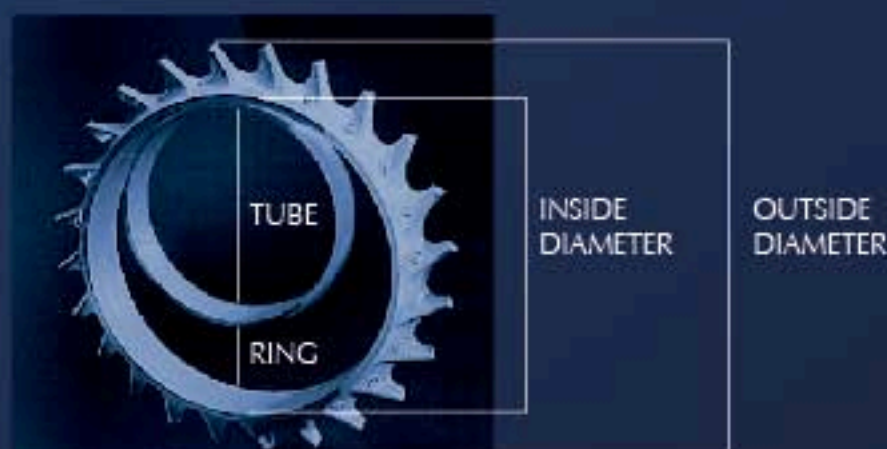
The hydraulic leveling bar is standard on all units. This bar, located in the front of the rear roller, will knock down ridges left by the S-Tines, leaving the soil firm and smooth. A hydraulic cylinder adjusts the up and down movement of the leveling bar; control is always at your fingertips. Depth Control Indicator is standard.

RINGS

With a ratio of five rings per foot of width, Schmeiser rings feature curved teeth to tackle the toughest soil conditions. Engineered to aggressively till one direction or provide firm packing in the opposite direction.

TUBES

Schmeiser tubes are made of API pipe and are available in 10" and 12" diameters. For additional weight, these tubes feature integrated plugs that allow the pipe to be filled with water.



TILL AN' BEDDER OPTIONS

- **Optional 1' Wide Rear Roller** - Helps eliminate ridge left by outside S-Tines or Leveling Bar
- **Rear Trail Hitch**
 - TB4-Q 2 Bar and 4 Bar Models
 - FTB-RTH Folding Models
- **Hydraulic S-Tine Adjustment (Replaces manual adjustment)**
 - TB2-HYDST 2 Bar Models
 - TB4-HYDST 4 Bar Models
 - FTB-HYDST Folding Models (uses series cylinders)
- **Front Split Roller**

Changes single front roller assembly into two (2) front rollers with a bearing hanger in the middle. Helps reduce bearing stress and soil push on the front roller assembly. Available on wider 2 Bar and 4 Bar non-folding models (16ft. to 24ft.).

2-BAR MODEL

Width	Tube Ring Size	Weight Lbs.	Number of S-Tines
12 ft.	10-12/16	5763	23
	10-12/17	6723	23
	10-13/17	6100	23
	12-14/20	7700	23
14 ft.	10-12/16	6422	27
	10-12/17	7542	27
	10-13/17	6814	27
	12-14/20	8690	27
16 ft.	10-12/16	7081	31
	10-12/17	8494	31
	10-13/17	7529	31
	12-14/20	9673	31
18 ft.	10-12/16	7740	35
	10-12/17	9446	35
	10-13/17	8244	35
	12-14/20	10720	35
20 ft.	10-12/16	8900	39
	10-12/17	10300	39
	10-13/17	9500	39
	12-14/20	12500	39

4-BAR MODEL

Width	Tube Ring Size	Weight Lbs.	Number of S-Tines
12 ft.	10-12/16	7620	34
	10-12/17	8460	34
	10-13/17	7860	34
	12-14/20	9468	34
14 ft.	10-12/16	8890	40
	10-12/17	9870	40
	10-13/17	9170	40
	12-14/20	11100	40
16 ft.	10-12/16	10160	49
	10-12/17	11280	49
	10-13/17	10480	49
	12-14/20	12580	49
18 ft.	10-12/16	11430	54
	10-12/17	12690	54
	10-13/17	11790	54
	12-14/20	14490	54
20 ft.	10-12/16	12690	60
	10-12/17	14104	60
	10-13/17	13094	60
	12-14/20	16100	60
24 ft.	12-14/20	20200	71

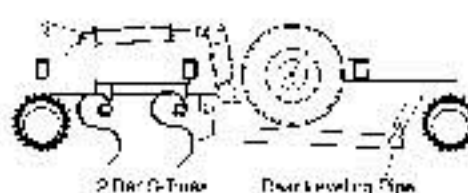
FOLD-UP 2-BAR MODEL

Width	Tube Ring Size	Weight Lbs.	Number of S-Tines	Transporting Width
20 ft.	10-12/16	11500	39	14 ft.
	10-12/17	13167	39	14 ft.
	10-13/17	12667	39	14 ft.
	12-14/20	14667	39	14 ft.
22 ft.	10-12/16	12650	43	14 ft.
	10-12/17	14484	43	14 ft.
	10-13/17	13934	43	14 ft.
	12-14/20	16134	43	14 ft.
24 ft.	10-12/16	13800	47	14 ft.
	10-12/17	15800	47	14 ft.
	10-13/17	15200	47	14 ft.
	12-14/20	17600	47	14 ft.
28 ft.	10-12/16	15200	55	16 ft.
	10-12/17	17500	55	16 ft.
	10-13/17	16800	55	16 ft.
	12-14/20	19600	55	16 ft.
30 ft.	10-12/16	16350	59	16 ft.
	10-12/17	18817	59	16 ft.
	10-13/17	18067	59	16 ft.
	12-14/20	21067	59	16 ft.

FOLD-UP 4-BAR MODEL

Width	Tube Ring Size	Weight Lbs.	Number of S-Tines	Transporting Width
20 ft.	10-13/17	16000	60	15'10"
	12-14/20	19100	60	15'10"
22 ft.	10-13/17	16570	66	15'10"
	12-14/20	19900	66	15'10"
24 ft.	10-13/17	17140	72	15'10"
	12-14/20	20700	72	15'10"
26 ft.	10-13/17	19120	78	17'10"
	12-14/20	23100	78	17'10"
28 ft.	10-13/17	19700	84	17'10"
	12-14/20	24000	84	17'10"
30 ft.	10-13/17	20280	90	17'10"
	12-14/20	24800	90	17'10"

2-BAR TILL AN' BEDDER



4-BAR TILL AN' BEDDER



T. G. SCHMEISER CO., INC.

1-800-288-8128 • www.tgschmeiser.com



3 Pt. Folding Smooth an' Roll



By T.G. Schmeiser Co., INC.

- Promotes seed to soil contact for optimum seed germination
- 24" roller - sealed and pressure tested (to add weight if needed)
- Units available from 4' to 40'
- Cat III & IV Quick Hitch compatible
- 2-3/16" Roller Bearings
- Counter balance valve for smooth and uniform wing movement
- Pull-Type units available



Rigid Unit Shown