

WEAVERLINE

Series 5 Silage Cart



All stainless conveyor system

- Stainless gap-link chain
- Stainless steel sprockets
- Stainless steel slats

FAST FEEDING!

High output – smooth-running discharge auger and fast apron speed cuts feeding time. Unload a 30 bushel cart full of corn silage in 35 seconds.

EASY FEEDING!

Hydrostatic drive – one hand fingertip control lets you select any traveling speed in either forward or reverse.

Hydrostatic Drive and Stainless Steel!

Stainless Steel

Since 1999 all Weaverline carts have been built with type 400 medium grade stainless steel box sections, most of them with stainless augers. This concept of "all Stainless Steel" is a direct result of the preferences of the Weaverline cart users.

In 1980 the first Weaverline carts were built with stainless steel box sections. Although carts with painted metal box sections were still available; farmers saw the advantage of the long life of stainless steel and made a painted metal cart obsolete.



This same "farmer-driven" change has happened with the stainless steel auger flighting. Introduced in 1988, the stainless auger is now firmly in place as the preferred auger; all carts built have at least some stainless augers, and the majority of the carts have all augers made with stainless steel flighting.

Weaverline has over 25 years of experience building stainless steel silage carts. You can depend on the quality and durability of Weaverline's stainless products. So, for the very best in Power Silage Carts, choose a Weaverline Series 5 cart with stainless steel box section and stainless augers.

Battery Power

Efficient electric power provides smooth operation with no toxic fumes.

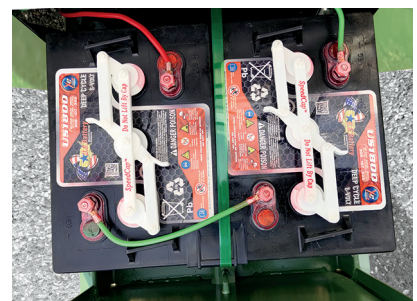


Advanced charging system

Unique charge system helps extend battery life. Developed by Weaverline technicians with over 55 years experience in battery-powered vehicles.

Extended battery life

Series 5 carts are equipped with extended life batteries, field-tested for durability and long life.



Stainless Steel Conveyor

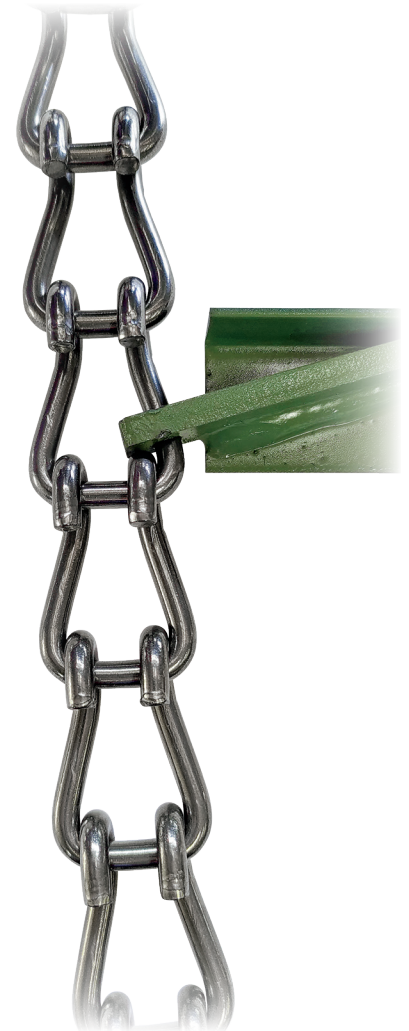


For years, the Weaverline carts have been known for fast and easy feeding. Cart life was greatly increased by the stainless steel box section and stainless steel augers. Farmers then said, "Now the cart needs a stainless steel conveyor chain."

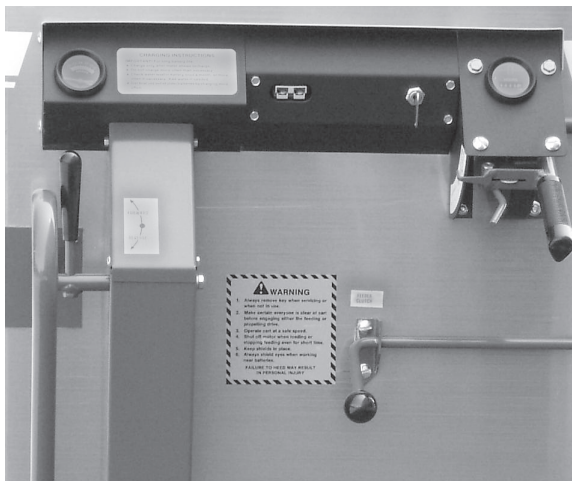
There was no stainless steel chain available that was suitable for the job, so Weaverline's engineers developed a stainless steel chain link that holds up in all kinds of feed materials.

The gap-hook chain allows the slat to be free floating on the sidebar of the link, thus avoiding the stress points of other types of attachment.

The gap-hook chain is self-centering on narrow stainless steel sprockets which results in an extremely easy running, low wear conveyor system that is not prone to sudden breakdowns - which is very important for a silage cart!



Stainless Steel Conveyor systems are standard on all series 5 carts!



Convenient controls

All the controls are within easy reach of the operator. The voltmeter and hourmeter allow for proper maintenance scheduling.

Variable discharge

Right hand control lever has eight positions - regulates augers, beaters and six different feeding speeds. Center lever actuates augers.

Special Models

Front & Side Unloading - Drive into a bunk and feed full width out the front as you back out. Flip a lever and convert the cart back to standard side feeding for in the barn.

High Discharge Box - 13" to 30" discharge height for feeding into high mangers.

Pneumatic Tires - For outside travel, this adds 6½" to the width of the cart.

Options and Kits Available

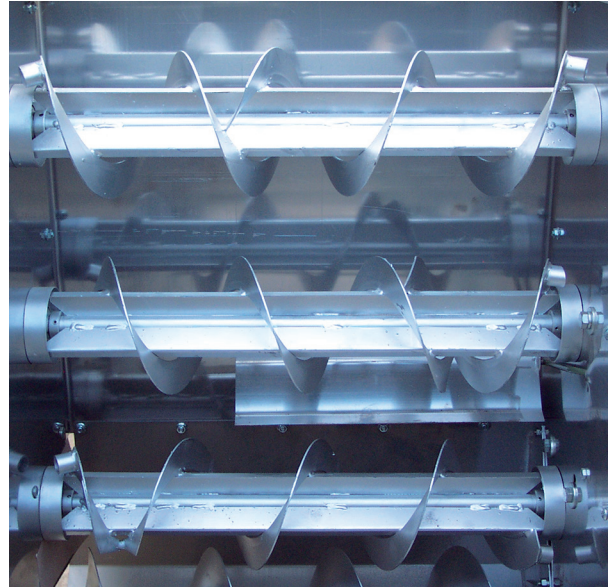
Extension Side Kit: To increase the capacity of the cart. Made of stainless steel, easy on – easy off. 6" and 12" extensions available.

Corn Baffle Kit: To feed high-moisture corn and other semi free-flowing materials.

Heavy Duty Caster Wheel: For rough floors or outside travel.

Hay Special

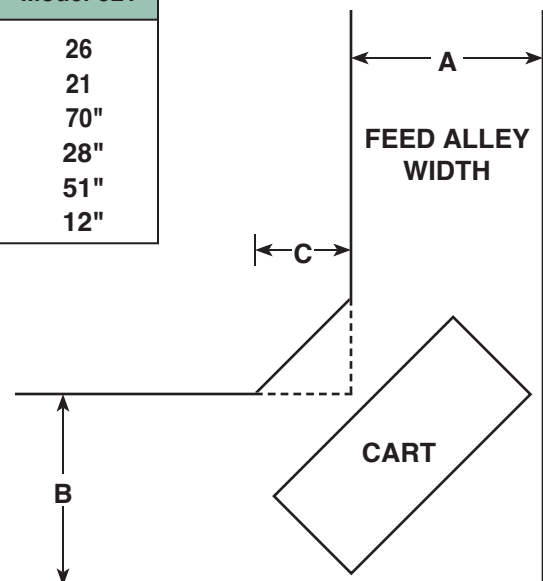
Specially designed augers and anti-wrap shields allow feeding TMR with dry hay. Material length can be up to 10" long depending on material type.



Specifications

	Model 537	Model 531	Model 525	Model 521
Cubic feet	46	39	31	26
Bushel capacity	37	31	25	21
Overall length	94"	82"	70"	70"
Overall width	33"	33"	33"	28"
Overall height	51"	51"	51"	51"
Discharge height	12"	12"	12"	12"

A	B	C/537	C/531	C/525	C/521
4.5 ft.	5 ft.	OK	OK	OK	OK
4 ft.	4.5 ft.	NO	OK	OK	OK
4 ft.	4 ft.	NO	12"-45°	OK	OK
4 ft.	3.5 ft.	NO	NO	6"-45°	OK
3.5 ft.	3.5 ft.	NO	NO	12"-45°	OK
3.5 ft.	3 ft.	NO	NO	NO	6"-45°



WEAVERLINE BEDDING CHOPPERS

Heavy Duty Bale Choppers for consistently chopped bedding material of straw, newspaper and other similar materials.

The KB1255 with the 13 HP Honda makes quick work of straw at less than 60 seconds per bale.



Equipped with the powerful, smooth-running twin cylinder 16 HP Briggs-Vanguard engine, the KB1250 is an excellent choice for fast chopping of newspaper and other demanding material.

The adjustable grate has six settings to control output and cutting length. The carrier for the extra bale folds up when not in use. A plastic top overlay and the adjustable plastic wear strip found on all Weaverline choppers helps eliminate any binding caused by the material being chopped and is very important when chopping newspaper.

Fire Extinguisher is standard on all units. An electric motor is available in place of the gas engine.

MANUFACTURED IN THE U.S.A BY WEAVERLINE, LLC.



High Efficiency Rotor	<p>The standard rotor with 76 knives welded to heavy replacement plates which slide easily on the Heavy Duty 1-1/4" Hex Shaft allow for easy replacement of worn blades. Plates can be flipped once to use both edges of the knife.</p>
<p>The aggressive 76-knife rotor with a spiral design assures an even power curve for uniform continuous cutting with less horsepower. This rotor, with its double V-belt drive for efficient transfer of power, is the heart of the high-capacity Weaverline Bale Choppers. The tilt-top feature, standard on all Weaverline choppers, makes access to and removal of the rotor a quick and easy task.</p>	
The Drive System	<p>The simple and efficient drive system makes full use of the power supply and eliminates belt slippage. A completely enclosed oil bath gearbox drives the steel bale hopper which rotates on four large bearings.</p>
Unit Specs	<p>All models measure approximately 60" long x 32" wide x 59" high. Wheel arrangement is two 16" tires and optionally 1 or 2 swivel wheels. Weight is approximately 420 - 500 lbs. Capacity is approximately 60 bales per hour.</p>

Distributed in Eastern Canada by:

HARCO AG EQUIPMENT LTD

5808 Hwy 9 N

Harriston, Ontario N0G 1Z0

Ph: 519-338-2923

Fax: 519-338-2756

sales@harcoag.ca

WEAVERLINE

Fast and Easy Mulching

with the

MULCH MASTER!



Model KB 1300 Straw Mulcher

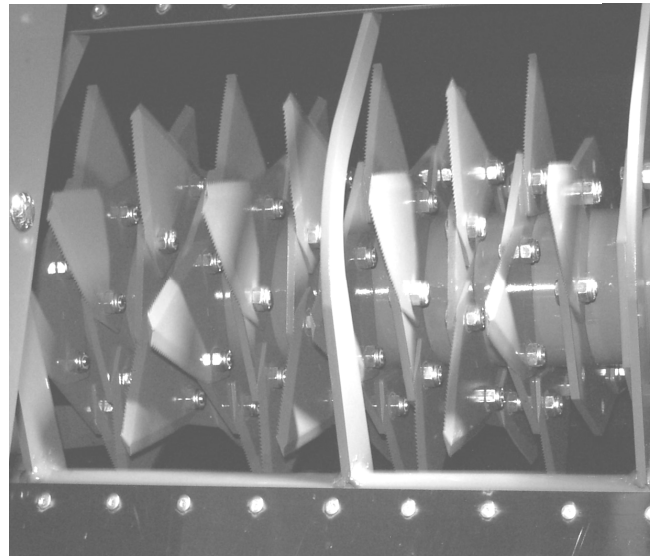
Cuts mulching time and puts mulch where you want it!

MANUFACTURED IN THE U.S.A. BY WEAVERLINE, LLC.

By mulching with the Weaverline Mulch Master you can save up to 80% on your mulching time over mulching by hand. You can mulch a bale of straw in as fast as 30 seconds. With the optional 30 ft or 40 ft flexible hose, mulch can be placed easily in tight spots and difficult to reach areas. The Mulch Master fits easily onto pickups, trucks or trailers. Units are skid mounted for easy loading and unloading.

High Efficiency Rotor

The aggressive 56-knife rotor with a spiral design assures an even power curve for uniform continuous cutting with **less horsepower**. This rotor, with its double V-belt drive for efficient transfer of power, is the heart of the high-capacity Weaverline Bale Choppers. The top is easily removed for access to the rotor.



The Weaverline KB 1300 series Mulch Master is available with either the smooth-running and powerful 16 h.p. Briggs & Stratton Vanguard engine or a 13 h.p. Honda engine. Also available as options are a rotating gooseneck and a hose handle kit.

Specifications

56" long x 34" wide x 50" high
56 knives bolted to hex plates
Capacity approx. 120 bales per hr
Weight approx. 600 lbs.

Weaverline, LLC., Churchtown PA
877-464-1025

WEAVERLINE TMR CHOPPERS

Heavy Duty Bale Choppers for Consistently Chopped Material of Hay, Straw and other Similar Feed Materials. Bottom Discharge into a Conveyor or through a floor to the Mixer.

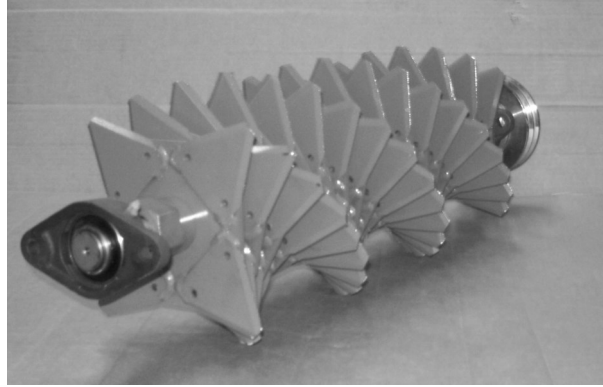


Available as the Model KB1560 with the 3 HP Electric Motor as pictured or an optional 5 HP Electric Motor for faster chopping. Either motor runs on 220 VAC Single Phase. The adjustable height stand can be removed if the unit is set on the floor above the mixer.

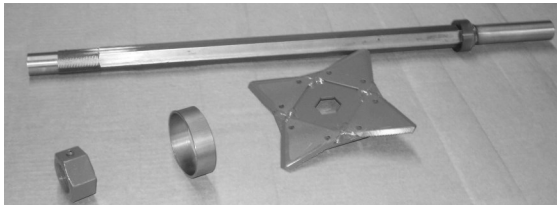
MANUFACTURED IN THE U.S.A BY WEAVERLINE, LLC.

High Efficiency Rotor

The aggressive 76-knife rotor with a spiral design assures an even power curve for uniform continuous cutting with **less horsepower**. This rotor, with its double V-belt drive for efficient transfer of power, is the heart of the high-capacity Weaverline Bale Choppers. The tilt-top feature, standard on all Weaverline choppers, makes access to and removal of the rotor a quick and easy task.



The standard rotor with 76 knives welded to heavy replacement plates which slide easily on the Heavy Duty 1-1/4" Hex Shaft allow for easy replacement of worn blades. Plates can be flipped once to use both edges of the knife.



The simple and efficient drive system makes full use of the power supply and eliminates belt slippage. The electric motor provides smooth, quiet power to the rotor. A completely enclosed oil bath gearbox drives the steel bale hopper which rotates on four large bearings.

All models measure approximately 46" long x 30" wide x 68" high. The Height can be adjust up to 80" at 4" increments. The adjustable stand can accommodate conveyors up to 36" wide and 35" high. Weight is approximately 500 lbs. Capacity is approximately 60 bales per hour.

WEAVERLINE

Silage Packer



**More feed and less
air in the trench**

The Weaverline 2900 series Silage Packers are built to help you pack faster and better. With heavier wheels, no lip on the rim, and lower boxes for less vision obstruction, the 2900 series packers take the advantages of previously designed Weaverline packers and bring it all together in a machine that helps you pack more effectively, which means more feed and less air in the trench.

SAVE TIME – SAVE FUEL
and increase the value of your forage



Manufactured in the USA By Weaverline LLC

Packing forage properly is very critical to material quality at feed-out time. Eliminating air pockets and “soft spots” is done easily with the Weaverline Silage Packer. While packing with a weighted tractor can be effective, tractor tires are designed to reduce compaction and distribute the weight. The Silage Packer, with steel wheels and the open wheel design can sink down as much as 12" if needed to eliminate soft spots. Thorough packing, done correctly, provides consistent forage density numbers throughout the entire trench.

30" steel wheels with a 3-inch wide stainless steel rim deliver approximately 1,000 pounds per wheel when the weight boxes are filled with sand. The heavy-duty 5" steel tube axle is mounted with bronze bushings to the ½" steel frame. The gusseted wheel design helps to rake and level the pile when there is excess loose material on top, but the gussets are clear of the pack when proper density is achieved. The Weaverline packer has the outside wheels at the very edge of the machine, making it much easier to get a tight pack right up to the trench wall. The Weaverline Silage Packer is an efficient and very effective packing machine that will help to get consistent density numbers from top to bottom and wall to wall in your trench.



Model	# of Wheels	Width	Max Working Weight	Recommended HP
2907	7	93"	7,000 lbs.	190
2909	9	123"	9,000 lbs.	230
2911	11	153"	11,000 lbs.	280+

Bolt-on 3-point hitch brackets are available for category 3N, 3, 4N or 4.
All models are quick-hitch compatible.

Weaverline, LLC., Narvon PA - 877-464-1025 - info@weaverline.com
www.weaverline.com

AIR RAID

**Quickly Remove all debris from
your path!**



MADE
IN
U. S. A.
BY
WEAVERLINE

Weaverline

Air Raid Features

-PTO driven

-For tractors ranging from 20HP to 75HP

-Cage fan rotates 360 degrees for best possible blowing angle

-Quiet— Perfect for golf courses and neighborhoods

By using a Weaverline air Raid debris blower you are able to quickly and efficiently remove leaves and debris from your path.

The air raid creates a powerful surge of wind, NOT noise. The blower is very quiet, making it an optimal choice for use on golf courses or in neighborhoods.



The Air raid produces an amazing amount of wind. It can produce:

6,000 feet per minute at 2 feet from the blower and

2,500 feet per minute at 10 feet from the blower.

6,000 feet per minute is about 68 mph.

The unit weighs approximately 300 lbs.

At 540 PTO rpm it produces approximately 6,000 cfm of air.

It consumes approximately 7hp at 540 rpm.

The unit is 36" long x 36" wide x 40" high .

(length not including the pto shaft)

Weaverline

Weaverline LLC—info@weaverline.com

www.weaverline.com—877-464-1025

WEAVERLINE

Model 46 Mulch Bagger



- ⇒ High production, low maintenance
- ⇒ Smooth unloading
- ⇒ One person can fill up to 100 bags per hour - double the output with two people
- ⇒ Stainless Steel box and hopper
- ⇒ 12 gauge welded steel base
- ⇒ 1-1/2 H.P. dual voltage AC motor - 220 volt recommended, 110 volt optional



Turning bulk mulch into bagged profits since 1987.

The Weaverline Mulch Bagger is a reliable, low-cost machine that enables small to mid-size nursery, greenhouse and garden centers to take control of their mulch buying requirements and increase their profit margins.

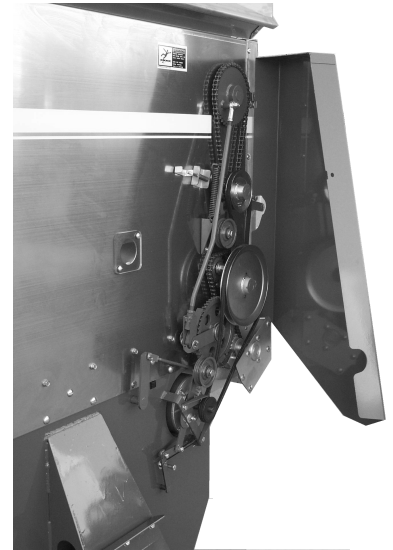
WEAVERLINE Mulch Bagger Features

Safety features are consistently built into any Weaverline product. The discharge chute on the Mulch Bagger is well shielded with a heavy reinforced rubber guard, and a plexiglass inspection window on the chute allows the operator to be where the action is and remain safe. Six plexiglass windows in the side of the hopper allow the operator to monitor the level and flow of the material inside without leaving his place at the discharge chute. A supply of bags are clipped onto the machine behind the chute, ready for use. Bags are held in place under the chute and removed when full.



Stainless slat conveyor moves mulch to a series of four augers which efficiently direct the material out of the chute into a bag. Augers are fabricated with long-life, low-maintenance stainless steel flighting and heavy duty bearings.

A hinged shield provides easy access to heavy duty drive belts and chains.



With controls right at hand, the operator can choose from six conveyor speeds while a foot-operated clutch engages the augers for smooth - efficient unloading. The clutch design offers maximum efficiency of unit operation and extended motor life

Specifications

Height (overall)	97"
Width	51"
Length	92"
Weight	900 lbs
Loading Height	77"
Loading Hopper Width	90"
Bulk Capacity	2.25 cu. yd.

