

2022 SKANDIC® SWT

Optimal off-trail traction and flotation with the widest track in the industry.



SKANDIC® SWT
900 ACE™ SHOWN

// PACKAGE HIGHLIGHTS

- Rotax® 600R E-TEC® engine or 900 ACE™ engine with 650W magneto available
- HPG™ rear shock
- 24 in. wide Multi-LinQ plate with 125 lb/56.7 kg cargo capacity
- 4.5 in. digital display
- LTS telescopic front suspension
- SC™-5U articulating rear suspension with locking mechanism (no tool required)
- NEW two color options
- Removable passenger seat with grips
- 23 in. ultra-high windshield with side deflectors
- Hitch receiver with 1,500 lb/680 kg towing capacity when equipped with an HD rear bumper. (1,200 lb/544 kg std.)
- Air radiator with fan
- Standard electric start
- Deep-snow running boards with large openings
- Easy-shift transmission (H-L-N) with RER™ electronic reverse (2-stroke)/electro-mechanical reverse (4-stroke)
- Pivoting mirrors
- pDrive™ clutch
- Low handlebar strap
- Pilot 7.4 skis

ROTAX® ENGINE

	600R E-TEC®	900 ACE™
Engine details	Liquid-cooled, two-stroke, eRAVE™	Liquid-cooled, four-stroke D.O.H.C., dry sump
Horsepower	125	95
Cylinders - Displacement	2 - 599.4 cc	3 - 899 cc
Bore - Stroke	72.3 mm - 73 mm	73 mm - 69.7 mm
Carburation	E-TEC® direct injection	EFI
Fuel type - Octane	Premium unleaded - 91	Regular unleaded - 87
Fuel tank	42 L/11.1 US gal	42 L/11.1 US gal
Oil tank capacity	3.4 L/3.6 qt	3.3 L/3.5 qt

POWERTRAIN

	600R E-TEC®	900 ACE™
Drive clutch	pDrive™ with clickers	pDrive™ with slider shoes
Driven clutch	QRS	QRS
Drive sprocket pitch	73 mm/2.86 in.	73 mm/2.86 in.

DRY WEIGHT

	600R E-TEC®	900 ACE™
Dry weight	287 kg/633 lb	298 kg/657 lb

DIMENSIONS

	600R E-TEC®	900 ACE™
Overall vehicle length	3,222 mm/126.9 in.	
Overall vehicle width	1,089 mm/42.8 in.	
Overall vehicle height	1,513 mm/59.6 in.	
Ski stance	889 mm/35 in.	
Track	Silent Cobra SWT:	
(Length x Width x Profile)	154 x 24 x 1.5 in.	

COLOR

Lava Red / Black	
Black	

SUSPENSION

Front suspension	LTS
Front shock	Motion Control
Front suspension travel	150 mm/5.9 in.
Rear suspension	SC™-5U
Center shock	Motion Control
Rear shock	HPG™
Rear suspension travel	239 mm/9.4 in.

FEATURES

Frame	REV® Gen4
Bodywork	Wide design
Skis	Pilot™ 7.4
Seating	2-up modular with underseat storage
Handlebar	U-shaped aluminum with J-hooks/ Low grab handle
Riser block height	145 mm/5.7 in.
Starter	Electric
Reverse	RER™ (2-stroke) Electro-mechanic (4-stroke)
Air radiator	High-efficiency w/ fan (4-stroke) Fan (2-stroke)
Brake system	Brembo brake with stainless-steel braided brake line
Heated throttle lever/grips	Standard (driver only)
Gauge type	4.5 in. digital display
Windshield	585 mm/23 in. with mirrors
Runner - Carbide	Square 3/8 - 4 in.
Bumpers (front/rear)	Std/Heavy-duty with tongue-type hitch

// FEATURE HIGHLIGHTS



1 Multi-LinQ plate

Standard LinQ adaptable storage. Fits 16- and 20-inch-wide LinQ accessories to maximize accessory options. Up to 125 lb (56.7 kg) of cargo capacity.



2 Utility 2-up utility seat

The ideal combination of comfort and convenience. Driver and passenger seat offering comfort and maneuverability for the driver, and convenience and protection for the passenger. Shielded and heated passenger hand grips.



3 LTS front suspension

Industry-exclusive telescopic front suspension enables a large, flat belly pan for exceptional deep-snow flotation.

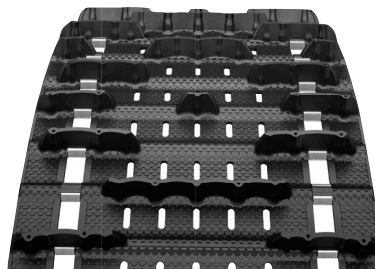


SKANDIC® SWT
900 ACE™ SHOWN



4 Pilot™ 7.4 skis

Designed to provide better reverse capability, more floatation off trail and more positive steering on trail and while hauling loads.



5 24 in. super wide track (SWT)

The industry's largest footprint provides unmatched traction and helps achieve the lowest ground pressure in snowmobiling.



6 SC™-5U articulating rear suspension

The articulated rail maximizes deep-snow traction in reverse, and its toolless locking mechanism is ideal for towing.

ski-doo

