

**Einböck**

The joy in tillage!

# PRODUCT PROGRAM

PRODUCTS / COMPANY / SERVICE

Crop-care

Tillage

Grassland care

Seeding & fertilizing



[WWW.EINBOECK.EU](http://WWW.EINBOECK.EU)

## THE JOY IN TILLAGE! FOR MORE THAN 85 YEARS



Since our foundation in 1934, honesty, reliability, sustainability as well as the quality of our products are our keys. We are standing for the best quality of workmanship and furthermore for the best quality of service, adjustment and operation of our red machines.

This product program shows our know-how, which we have built up for more than 85 years in tillage technology, more than 40 years in row-crop cultivation technology, more than 30 years in tined weeder technology and more than 25 years in grassland care technology. For more than 8 decades in agricultural technology we work and live by our statement "The joy in tillage!"

Leopold III & Birgit Einböck

# CONTENTS

## CROP-CARE

4

Tined weeder AEROSTAR	4
Tined weeder AEROSTAR-EXACT	6
Rotative weeder AEROSTAR-ROTATION	8
Rotary hoe ROTARYSTAR	10
Row-crop cultivator CHOPSTAR 1-30	12
Row-crop cultivator CHOPSTAR 3-60	14
Row-crop cultivator CHOPSTAR 5-90	16
Row-crop cultivator CHOPSTAR 10-150	18
Row-crop cultivator CHOPSTAR-HYBRID	20
Row-crop cultivator CHOPSTAR-TWIN	22
Camera steering system ROW-GUARD	24
Ridger HILLSTAR	26
Rollstar cultivator ROLLSTAR	28

## TILLAGE

30

Seedbed combination EXTREM	30
Seedbed harrow STANDARD	32
Seedbed cultivator VIBROSTAR	34
Cultivator TAIFUN	36
Universal cultivator HURRICANE	38
Front roller FRONT-STAR	40
Front roller FRONT-SPIKE	41

## GRASSLAND CARE

42

Grassland weeder GRASS-MANAGER	42
Grassland weeder GRASS-MANAGER-PRO	43
Grassland seeder PNEUMATICSTAR	44
Grassland seeder PNEUMATICSTAR-PRO	46
Sports field weeder SPORTSTAR	49

## SEEDING & FERTILIZING

50

Pneumatic seeding box P-BOX-STI	50
Pneumatic seeding box P-BOX-MD	51
Pneumatic seeding box JUMBO	52
Row crop drill CHOPSTAR-SEEDER	53
Mechanical intercrop seeder DRILLBOX & MECHANICBOX	54
Mechanical intercrop seeder FERTIBOX	55

## COMPANY & SERVICE

56

Values & philosophy	56
Spare parts & service	58
FarmPower	59



Type/ Working width cm	Number of tines	Sectors	Folding action rigid    hydr.	HP/KW	Weight approx. kg
AEROSTAR 150	60	1 x 1,5	•	15/11	190
AEROSTAR 200	84	1 x 2,1	•	20/15	200
AEROSTAR 300	120	2 x 1,5	•	30/22	280
AEROSTAR 450	180	3 x 1,5	•	40/29	500
AEROSTAR 500	204	1 x 2,1 / 2 x 1,5	•	50/37	520
AEROSTAR 600	240	4 x 1,5	•	60/44	620
AEROSTAR 750	300	5 x 1,5	•	65/48	850
AEROSTAR 800	324	4 x 1,5 / 1 x 2,1	•	70/51	870
AEROSTAR 900	360	6 x 1,5	•	80/59	1.170
AEROSTAR 1200 <sup>1)</sup>	480	8 x 1,5	•	90/66	1.310
AEROSTAR 1500 <sup>1)</sup>	600	10 x 1,5	•	110/81	1.600
AEROSTAR 1800 <sup>1)</sup>	720	12 x 1,5	•	130/95	2.490
AEROSTAR 1800 <sup>2)</sup>	720	3 x 1,8 / 6 x 2,1	•	120/88	3.950
AEROSTAR 2400 <sup>2)</sup>	960	3 x 1,8 / 6 x 2,1 / 4 x 1,5	•	140/103	5.460

1) shear retraction  
2) trailed

## Tined weeder AEROSTAR

The tined weeder for perfect weeding effect. The worldwide thousandfold proven AEROSTAR is not only used for mechanical crop maintenance, but also as an alternative to chemical weed control. Movable tine sections grant a perfect adaption to any soil condition.

## TECHNCAL DATA

- » Lower link category I off 5 m / Kat. II off 6 m
- » Tines Ø 7 mm / 0.28", 490 mm / 19.3" long
- » No frame distortions
- » Central tine adjustment (5 positions)
- » Line spacing 2.5 cm / 1" (center to center of tine)
- » Large bearing mounted rubber support wheels, distance approx. 1.36 - 1.45 m / 4.46 - 4.76 ft, Dimension 16x6.50/8 (18.8.50/8 on shear-retraction in the centre)
- » The side sections fold in automatically through parallel guidance
- » Parking support
- » For machines with shear-retraction two double acting hydr. valves are necessary
- » Transport width 1.50 m - 3.00 m / 4.9 ft - 9.8 ft

# AEROSTAR



- ✓ Perfect weeding effect
- ✓ Heavy-duty construction
- ✓ Optimal soil adaptation
- ✓ Boosts soil vitality and activity
- ✓ Big range of versatility
- ✓ Large variety of equipment



## ADVANTAGES

- Exact tine position and movement
- Spring tines adjustable with a central lever
- High flexibility of working widths
- Supporting wheels for individual wheel base and ground elevations
- Line spacing of 2,5 cm / 1"
- Plastic fork support - no wear of steel tubes
- Compact Retraction
- Stronger construction from 9 m working width



Line spacing of 2,5 cm / 1" The line spacing of 2,5 cm is very important for the quality of the operation result. 60 tines on 1.5 m / 4.9 ft working width make result in a static line distance of 2.5 cm / 1". Only this distance will provide ensure the perfect weeding effect.



Type/Working width in cm	Number of tines	Sections m	Wheels	HP/KW	Weight approx. kg
AEROSTAR-EXACT 300	120	2 x 1,5	4	30/22	540
AEROSTAR-EXACT 600	240	4 x 1,5	6	60/44	940
AEROSTAR-EXACT 900 <sup>1)</sup>	360	6 x 1,5	6	80/59	1.600
AEROSTAR-EXACT 1200 <sup>1)</sup>	480	8 x 1,5	6	90/66	1.880

1) shear retraction

## Tined weeder AEROSTAR-EXACT

Exact, sensitive and precise – these points are requested from modern weeding technology – especially when working in special crops. The AEROSTAR-EXACT has 600 mm / 23.6" long, angled tines with 7 mm / 0.28" diameter which copy the soil surface perfectly. They allow weeding in a late stage of crop growth. Swivel-wheels at the rear of the weeder ensure exact depth guidance of the tines. The 1.5 m / 4.9 ft wide sections of the weeder are connected firmly to the frame. This ensures smooth operation and allows exact adjustment of the weeder. With this equipment the weeder can work in row crops already in the seed leaf stage.

## TECHNICAL DATA

- » Lower links with quick coupling pendular axle (up to 6 m working width)
- » Mounting category CAT. II
- » Tines Ø 7 mm / 0.28", 600 mm / 23.6" long
- » No frame distortion
- » Central hydraulic tine adjustment
- » Line spacing 2,5 cm / 1"
- » Accurate depth control through front support wheels and rear oscillating chassis
- » Large, bearing mounted support wheels
- » track width adjustable up to 2 m / 6.6 ft
- » Hydr. transport lock at 9 and 12 m
- » Front and rear fixed sections
- » Tines behind rear wheels to eliminate tire tracks

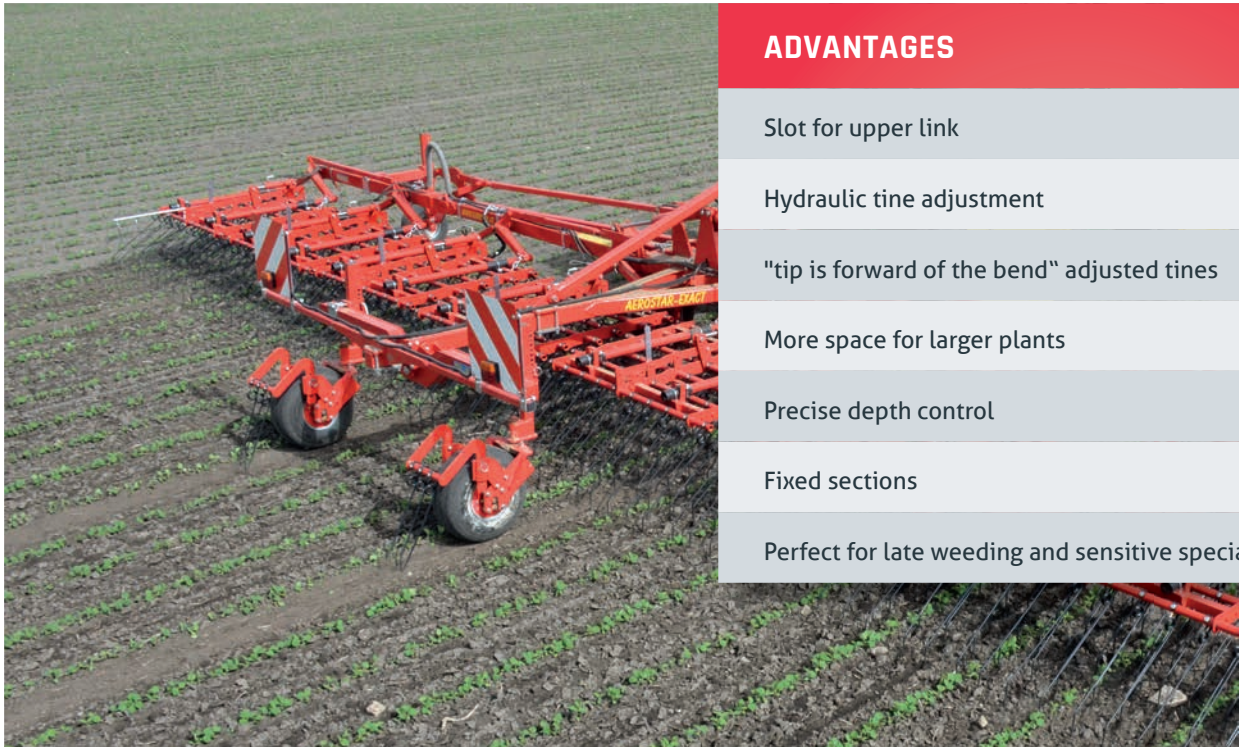
# AEROSTAR-EXACT

CROP-CARE

7



- ✓ Precise weeding technology
- ✓ High range of versatility
- ✓ Optimal soil adaptation
- ✓ Precisely controlled in working depth
- ✓ Hydraulic tine adjustment
- ✓ Perfectly suited for sensitive crops



## ADVANTAGES

- Slot for upper link
- Hydraulic tine adjustment
- "tip is forward of the bend" adjusted tines
- More space for larger plants
- Precise depth control
- Fixed sections
- Perfect for late weeding and sensitive special crops



The hydraulic tine adjustment will make adjusting using the AEROSTAR-EXACT in changing soil conditions a whole lot easier. Putting it also puts the tines in a flat position when the AEROSTAR is folded to transport position is also much more comfortable with this option.



Type/Working width in cm	Number of star wheels	Sections	Folding		HP/KW	Weight approx. kg
			rigid	hydr.		
AEROSTAR-ROTATION 150	10	1 x 1,5	•		20/15	280
AEROSTAR-ROTATION 300	20	2 x 1,5	•		35/26	420
AEROSTAR-ROTATION 450	30	3 x 1,5		•	50/37	650
AEROSTAR-ROTATION 600	40	4 x 1,5		•	65/48	810
AEROSTAR-ROTATION 900 <sup>1)</sup>	60	6 x 1,5		•	80/59	1.560
AEROSTAR-ROTATION 1200 <sup>1)</sup>	80	8 x 1,5		•	95/70	1.890
AEROSTAR-ROTATION 1800 <sup>1)</sup>	120	12 x 1,5		•	150/110	3.300

1) shear retraction

## Rotative weeder AEROSTAR-ROTATION

The AEROSTAR-ROTATION combines the advantages of a tined weeder and a rotary hoe. The result is a rotative weeder with high flexibility in use. Steel tines, casted into an inclined plastic disc do the job. Rotating working tools unroot or cover weeds, encourage tillering and crack even hard soil crusts without any problems. This machine is also very well suited for higher residue conditions and slightly moisture soil. The hydraulic pressure adjustment allows anything from full pressure on the star wheels to no pressure. No pressure allows the wheels to float. Therefore the machine is perfectly suited for difficult soil conditions.

## TECHNICAL DATA

- » Lower links with quick coupling pendular axle (up to 6 m working width)
- » Mounting category CAT I up to 4,5 m / CAT. II from 6 m
- » separate mounting of each star wheel
- » Maintenance free bearing of the star wheels
- » Hydraulic adjustment of aggression – full or no pressure on the star wheel is possible
- » Pressure and level control between the sections
- » Large bearing mounted rubber support wheels, distance approx, 1.36 – 2.00 m / 4.46 - 6.56 ft
- » Dimension 16 x 6.50/8 (with shear folding 18 x 8.50/8 in the middle)
- » Hydraulic transport lock at 9 m, 12 m and 18 m machines
- » Shear retraction through parallel guidance
- » Parking support
- » Transport width 3.00 m / 9.8 ft





- ✓ Inclined mounted star wheels
- ✓ Perfect for mulch tillage
- ✓ Encourage tillering
- ✓ Cracking even hard soil crusts
- ✓ Optimally suited for difficult soil conditions
- ✓ Works very effectively



## ADVANTAGES

- Effective also in a late growth stage
- Pressure on the rotating star wheels can be hydraulically reduced
- Low working speed – high working effect
- Comfortably and infinitely variable adjustable
- Compact shear retraction



When working in sensitive crops and light soils the pressure on the rotating star wheels can be hydraulically reduced, until absolutely no pressure is left anymore and the star wheels are floating. When down-pressure is minimized, the soil has to be very even level for optimum performance.



Type/Working width in cm	Number of stars	Folding rigid	hydr.	Transport width m	HP/KW	Weight approx. kg
ROTARYSTAR 300	32	•		3,00	70/51	990
ROTARYSTAR 340	36	•		3,50	70/51	1.080
ROTARYSTAR 500	54		•	3,00	80/59	1.600
ROTARYSTAR 600	64		•	3,00	90/66	1.820
ROTARYSTAR 640	68		•	3,00	90/66	1.910
ROTARYSTAR 900	96		•	6,10	160/118	3.600
ROTARYSTAR 1200	128		•	6,75	200/147	4.400

## Rotary hoe ROTARYSTAR

With its rotating working tools (rotary stars) the ROTARYSTAR is a reliable tool to break hard crusts caused by heavy rain. The soil is aerated and plant growth is supported. Extreme productivity can be achieved with a high operational speed between 12-25 km/h - 7.5-15.5 mph. The ROTARYSTAR can work in various crops.

Also in mulch-till-crops the rotary hoe operates very efficiently, as the working tools do not collect residues. The stars are pre-tensioned with springs and mounted on 1.5 m / 4.9 ft wide, 2-row sections. Via a hydraulic parallelogram the pressure on the sections can be adjusted during operation.

## TECHNICAL DATA

- » Solid frame
- » Lower and upper links equipped with hardened bushings
- » Mounting category CAT II
- » Stone protection for the tractor on the central frame section
- » Rotor stars arrangement in 2 rows
- » Rotor star suspension with additional spring preload
- » Rotor sections parallel guided with hydraulic level control
- » Rotor star: ø 52 cm with 16 changeable, wear-resistant rotor fingers
- » Line spacing 9,38 cm
- » Large, bearing mounted support wheels Dimension 18 x 8.50
- » 2 double acting hydraulic valves necessary
- » Parking support
- » Working width 3 m – 6,4 m



- ✓ Huge productivity due to high working speed
- ✓ Perfect breaking of crusts
- ✓ Improved aeration of the topsoil
- ✓ Ideal for weed control in mulch-till crops
- ✓ Hydraulic pressure- and level control
- ✓ For aeration, loosening and mineralization



## ADVANTAGES

- Ideal for weed control in mulch-till crops
- Breaking of crusts and crumbling the soil
- Powerful weed control
- Strong for long-living



The ROTARYSTAR with its rotating working tools (finger stars) has a great benefit: crusts caused by rain will break up effectively and get crumbled.



Type/Working width	Transport width in m <sup>1)</sup>	Frame length in m	Hoe elements	HP/KW	Weight approx. kg
<b>REAR MOUNTED</b>					
EGS 12-row RIGID	3,20	3,20	13	40/30	700
EGS 16-row HG <sup>2)</sup>	3,00	4,20	17	70/51	1.200
EGS 24-row HG <sup>2)</sup>	3,00	6,20	25	80/59	1.560
EGS 32-row HG <sup>2,3)</sup>	3,30	8,20	33	90/66	2.120
<b>FRONT MOUNTED</b>					
EGS 12-row RIGID	3,20	3,20	13	40/30	680
EGS 16-row HG <sup>2)</sup>	3,00	4,20	17	70/51	1.100
EGS 24-row HG <sup>2)</sup>	3,00	6,20	25	80/59	1.450
EGS 32-row HG <sup>2)</sup>	3,30	8,20	33	90/66	1.940

1) depending on row spacing  
2) hydraulic folding – triple-frame

3) 2 high-gauge-wheels instead of upper link steering and 1 rubber support wheel each on the outer wing

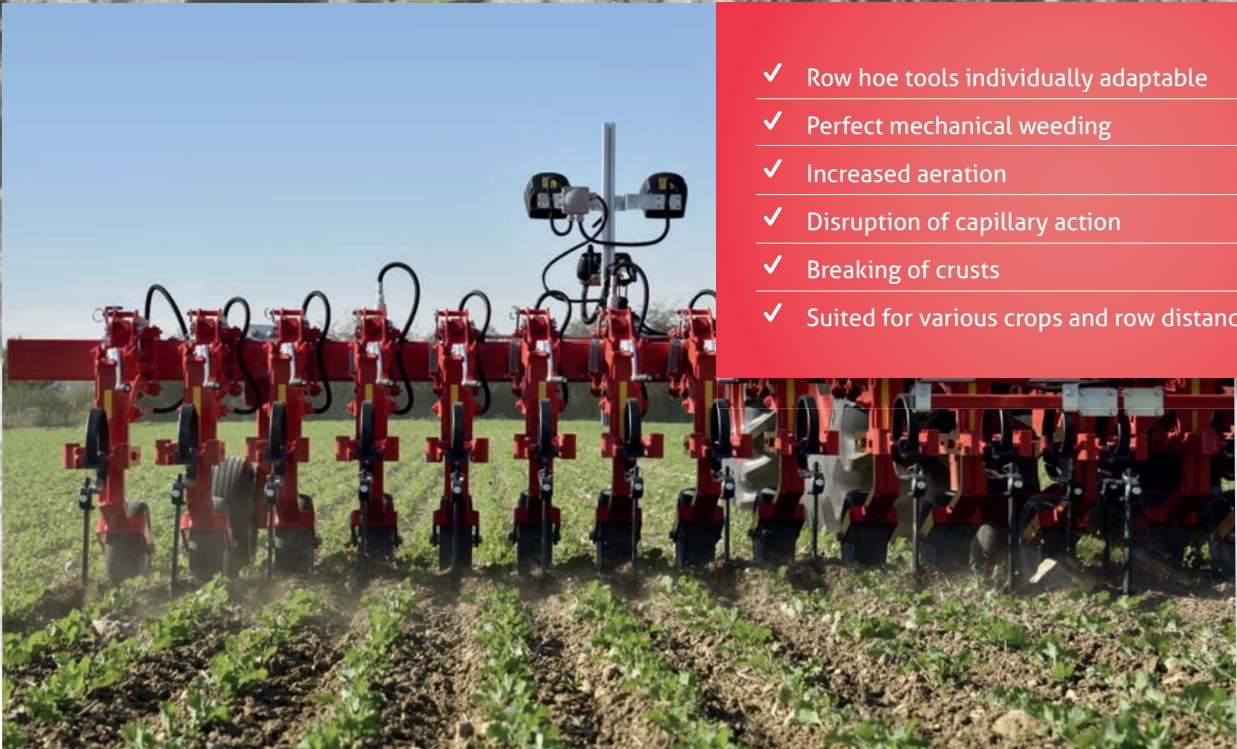
## Row-crop cultivator CHOPSTAR 1-30

The row hoe CHOPSTAR does not only control weeds, but also achieves excellent results in soil aeration, nitrogen mobilization, regulation of the water balance etc. The CHOPSTAR 1-30 has 1 tine per hoeing section and is suited for row crop with a row distance of up to 30 cm. like e.g. grain, beans, etc. On the hoeing-sections weeder tines can be mounted additionally.

## TECHNICAL DATA

- » Standard vibro tines 32x12 (vibro tines 40x12 optionally available)
- » Row distance variable up to 30 cm
- » Mounting category CAT II
- » Rear mounted machines: autom. top link steering with spindle and high-gauge wheels
- » Adjustable retraction support on each parallelogram by spring
- » Farmflex-feeler-wheels adjustable through spindles, ball bearing mounted, ø 300 mm / 100 mm wide
- » Robust, adjustable parallelogram
- » Hoe element with 1 duckfoot sweep 180 mm
- » Front mounted machines with track indicator for improved guidance
- » Quick conversion from rear to front mounting without extra charge - only possible in standard version

# CHOPSTAR 1-30



- ✓ Row hoe tools individually adaptable
- ✓ Perfect mechanical weeding
- ✓ Increased aeration
- ✓ Disruption of capillary action
- ✓ Breaking of crusts
- ✓ Suited for various crops and row distances



1-30



The hoeing section of the CHOPSTAR 1-30 has 1 tine for a row distance of up to 30 cm. Hinged crop protection shields, adjustable in height, are available from a row spacing of 25 cm.



Type/Working width	Transport width in m <sup>2)</sup>	Frame length in m	Hoe elements	HP/KW	Weight approx. kg
ERS 5-row RIGID <sup>1)</sup>	2,45	2,45	6	30/22	620 - 630
ERS 6-row RIGID	3,00	3,00	7	40/30	640 - 660
ERS 8-row HG <sup>3)</sup>	3,00	3,80	9	60/44	980 - 990
ERS 12-row HG <sup>3)</sup>	3,00	5,60	13	70/51	1.380 - 1.390
ERS 15-row HG <sup>3,6)</sup>	3,20	6,95	16	90/66	1.650 - 1.780
ERS 18-row HG <sup>3,7)</sup>	4,80	8,30	19	130/96	2.120 - 2.160
ERS 18-row HG <sup>4)</sup>	3,00	8,30	19	130/96	2.310 - 2.360
ERS 24-row HG <sup>3,5)</sup>	6,70	11,00	25	160/118	2.700 - 2.770
ERS 24-row HG <sup>4)</sup>	4,90	11,00	25	160/118	2.840 - 2.910

1) with support - gauge wheels follow the tractor track

2) on the standard version - depending on row spacing - detail upon request or on order confirmation

3) hydraulic retraction - triple-frame

4) hydraulic retraction - double folding frame, 4 air wheels 18x8.50 instead of upper-link steering Cat. II on 18 rows, Cat. III on 24 rows

5) 4 gauge wheels and 1 rubber support wheel on each side wing instead of upper-link steering

6) 2 gauge wheels and 1 rubber support wheel on each side wing instead of upper-link steering

7) 4 gauge wheels instead of upper-link steering

## Row crop cultivator CHOPSTAR 3-60

The row hoe CHOPSTAR does not only control weeds, but also achieves excellent results in soil aeration, nitrogen mobilization, regulation of the water balance etc. The CHOPSTAR 3-60 has 3 tines per hoeing section and is suited for row crop with a row distance of up to 60 cm. Like e.g. beets, soya, etc. These cultivators are mainly used in medium to heavy soil. On the hoeing-sections weeder tines can be mounted additionally. On the hoeing-sections a lot of different options like hilling elements, hilling sweeps, weeder tines, finger-hoes, etc. can be mounted.

## TECHNICAL DATA

- » Standard vibro tines 32x12 (vibro tines 40x12 optionally available)
- » Row distance variable up to 60 cm
- » Rear mounted machines: autom. top link steering with spindle and high-gauge wheels
- » Adjustable retraction support on each parallelogram by spring
- » Farmflex-feeler-wheels adjustable through spindles, ball bearing mounted, ø 300 mm / 100 mm wide
- » Parallelogram guided crop deflector plates (height adjustable) or crop deflector discs (can be lifted)
- » Full hoeing element with 3 Vibrotines - 2 duckfoot sweeps 140 mm and in the centre 1 duckfoot sweep 160 mm
- » Half hoeing element with 2 Vibrotines - 1 duckfoot sweep 140 mm and in the centre 1 duckfoot sweep 160 mm
- » Front mounted machines with track indicator for improved guidance
- » Quick conversion from rear to front mounting without extra charge - only possible in standard version

# CHOPSTAR 3-60



- ✓ Row hoe tools individually adaptable
- ✓ Perfect mechanical weeding
- ✓ Increased aeration
- ✓ Disruption of capillary action
- ✓ Breaking of crusts
- ✓ Suited for various crops and row distances



3-60



The hoeing section of the CHOPSTAR 3-60 has 3 tines for a row distance of up to 60 cm. It fits very well for beets, soya, etc.



Type/Working width	Transport width in m <sup>2)</sup>	Frame length Front	Frame length Rear	Frame length in m	Hoe elements	HP/KW	Weight approx. kg
EMS 2-row RIGID <sup>1)</sup>	1,60	•	•	1,60	3	20/15	390 - 470
EMS 4-row RIGID	3,00	•	•	3,00	5	40/30	560 - 640
EMS 4-row HG <sup>3)</sup>	3,00	•	•	3,00	5	50/37	700 - 920
EMS 6-row RIGID	4,40	•	•	4,40	7	60/44	720 - 930
EMS 6-row HG <sup>3)</sup>	3,00	•	•	4,40	7	60/44	1.020 - 1.120
EMS 8-row RIGID	5,80	•	•	5,80	9	80/59	1.140
EMS 8-row HG <sup>3)</sup>	3,20	•	•	5,80	9	80/59	1.220 - 1.320
EMS 12-row HG <sup>3,5)</sup>	4,80	•	•	8,60	13	140/103	2.040
EMS 12-row HG <sup>4)</sup>	3,00	•	•	8,60	13	140/103	2.270
EMS 16-row HG <sup>3,5)</sup>	6,90	•	•	11,40	17	160/118	2.550

1) with support - gauge wheels follow the tractor track

2) depending on row distance - detail upon request or on order confirmation

3) hydraulic retraction - triple-frame

4) hydraulic retraction - double folding frame, 4 air wheels 18x8.50 instead of upper link steering - Cat. II

5) gauge wheels instead of upper-link steering

## Row crop cultivator CHOPSTAR 5-90

The row hoe CHOPSTAR does not only control weeds, but also achieves excellent results in soil aeration, nitrogen mobilization, regulation of the water balance etc. The CHOPSTAR 5-90 has 5 tines per hoeing section and is suited for row crop with a row distance up to 90 cm. like e.g. corn sunflower, etc. These cultivators are mainly used in medium to heavy soil. On the hoeing-sections weeder tines can be mounted additionally. On the hoeing-sections a lot of different options like hilling elements, hilling sweeps, weeder tines, finger-hoes, etc. can be mounted.

## TECHNICAL DATA

- » Standard S-tine (vibro tines optionally available)
- » Last tine with reinforcement spring and adjustable in height
- » Lower links guided on both sides
- » Mounting category CAT II / from 12 row triple frame, CAT III
- » Rear mounted machines: autom. top link steering with spindle and high-gauge wheels
- » Adjustable retraction support on each parallelogram by spring
- » Robust, adjustable parallelogram
- » Side position of tines can be adjusted very easily and quickly
- » Parallelogram guided crop deflector plates, height adjustable (Crop deflector discs can be lifted and are available as an option)
- » Farmflex-feeler-wheels adjustable through spindles, ball bearing mounted, ø 300 mm / 100 mm wide
- » Quick conversion from rear to front mounting without extra charge - only possible in standard version
- » Front mounted machines with track indicator for improved guidance



# CHOPSTAR 5-90



- ✓ Row hoe tools individually adaptable
- ✓ Perfect mechanical weeding
- ✓ Increased aeration
- ✓ Disruption of capillary action
- ✓ Breaking of crusts
- ✓ Suited for various crops and row distances



5-90



The hoeing section of the CHOPSTAR 5-90 has 5 tines for a row distance of up to 90 cm. It fits very well for corn sunflower, etc.

# ROW CROP CULTIVATOR



Type/Working width	Transport width in m <sup>1)</sup>	Frame length in m	Hoe elements	HP/KW	Weight approx. kg
EKS 2-row RIGID	3,00	2,55	4	40/30	440-480
EKS 3-row HG <sup>2)</sup>	3,00	4,05	6	60/44	900-1.100

1) for a row spacing of 150 cm / 59"  
 2) hydraulic folding - triple-frame

## Row crop cultivator CHOPSTAR 10-150

The row hoe CHOPSTAR does not only control weeds, but also achieves excellent results in soil aeration, nitrogen mobilization, regulation of the water balance etc. The CHOPSTAR 10-150 has up to 10 tines per hoeing section and is suited for row crop with a row distance of up to 150 cm. like e.g. pumpkin etc. These cultivators are mainly used in medium to heavy soil. On the hoeing-sections weeder tines can be mounted additionally. On the hoeing-sections a lot of different options like hilling elements, hilling sweeps, weeder tines, finger-hoes, etc. can be mounted.

## TECHNICAL DATA

- » Standard S-tine (vibro tines optionally available)
- » Last tine with reinforcement spring and adjustable in height
- » Row distance variable up to 150 cm
- » Lower links guided on both sides
- » Mounting category CAT II
- » Rear mounted machines: autom. top link steering with spindle and high-gauge wheels
- » Adjustable retraction support on each parallelogram by spring
- » Robust, adjustable parallelogram
- » Side position of tines can be adjusted very easily and quickly
- » Parallelogram guided crop deflector plates, height adjustable (Crop deflector discs can be lifted and are available as an option)
- » Farmflex-feeler-wheels adjustable through spindles, ball bearing mounted, ø 300 mm / 100 mm wide
- » Front mounted machines with track indicator for improved guidance
- » Quick conversion from rear to front mounting without extra charge - only possible in standard version

# CHOPSTAR 10-150



- ✓ Row hoe tools individually adaptable
- ✓ Perfect mechanical weeding
- ✓ Increased aeration
- ✓ Disruption of capillary action
- ✓ Breaking of crusts
- ✓ Suited for various crops and row distances



10-150



The hoeing section of the CHOPSTAR 10-150 has up to 10 tines for a row distance of up to 150 cm. It fits very well for pumpkins etc.



Type/Working width	Transport width in m <sup>1)</sup>	Frame length in m	Discs	HP/KW	Weight approx. kg
EHH 6-row RIGID	3,00	3,20	7	60/44	660
EHH 8-row HG <sup>2)</sup>	3,00	4,20	9	70/51	990
EHH 12-row HG <sup>2)</sup>	3,00	6,20	13	90/66	1.380
EHH 15-row HG <sup>2,5)</sup>	3,00	7,70	16	100/99	1.780
EHH 18-row HG <sup>2,6)</sup>	4,80	9,20	19	130/96	2.120
EHH 18-row HG <sup>3)</sup>	3,00	9,20	19	130/96	2.310
EHH 24-row HG <sup>2,4)</sup>	6,70	12,20	25	160/118	2.700
EHH 24-row HG <sup>3)</sup>	4,90	12,20	25	160/118	2.910

1) standard version - depending on row spacing - details upon request or on the order confirmation

2) hydraulic folding - tripple frame

3) hydraulic folding - double fold, 4 pcs. airwheels 18x8.50 instead of upper link steering Kat. II on 18-rows, Kat. III on 24-rows

4) 4 gauge wheels instead of upper link steering and 1 rubber wheel on the side wing

5) 2 gauge wheels instead of upper link steering and 1 rubber wheel on the side wing

6) 4 gauge wheels instead of upper link steering

## Row crop cultivator CHOPSTAR-HYBRID

The CHOPSTAR-HYBRID inter-row crop cultivator with horizontal discs is the perfect solution for hoeing in mulch-till. Based on the proven CHOPSTAR hoeing frame there are discs mounted to the hoeing section that can rotate freely. The diameter is adapted to the desired row spacing. These discs cut through the soil just below the surface. They harm the roots of the weeds respectively hoe the weed just below the soil surface and below the mulch layer. High-gauge wheels are mounted in front of the discs. They cut the soil and the mulch layer vertically to guarantee a smooth operation without any clogging.

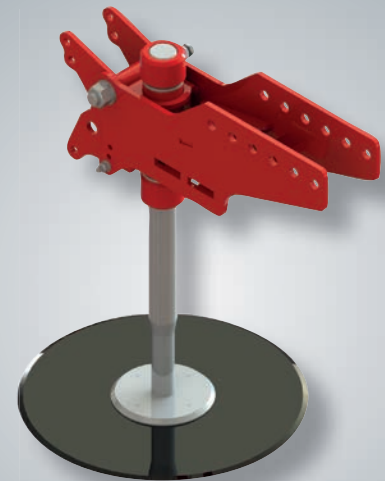
## TECHNICAL DATA

- » Depending on configuration and number of rows, as well as diameter of the horizontal disc a row spacing 25 - 50 cm (diameter of horizontal disc 180 mm - 450 mm) is possible
- » Rear mounted machines: autom. top link steering with spindle and high-gauge wheels
- » Adjustable retraction support on each parallelogram
- » Farmflex-feeler-wheels adjustable by spindles, ball bearing mounted, ø 300 mm/100 mm wide
- » Robust, adjustable parallelogram - XL Version
- » Carrier for horizontal disc with shearbolt overload protection
- » Element full with horizontal disc ø 350 mm
- » Half-element with horizontal disc ø 250 mm

# CHOPSTAR-HYBRID



- ✓ Inter-row crop cultivator with horizontal discs
- ✓ Hoeing in mulch-till
- ✓ Perfect mechanic weed-control
- ✓ Disc hoe
- ✓ Operates short below the surface
- ✓ Suited for special crops



## HYBRID



The horizontal disc is mounted on the parallelogram with shearbolt overload protection. The full element has a horizontal disc with  $\varnothing$  350 mm, the half element has a horizontal disc with  $\varnothing$  250 mm. Different diameters of horizontal discs are available on request.



Type/Working width	Transport width in m <sup>1)</sup>	Frame length in m	Hoe elements	HP/KW	Weight approx. kg
ETH 5-row RIGID <sup>1)</sup>	2,10	2,00	5	30/22	580
ETH 6-row RIGID <sup>1)</sup>	2,75	2,45	6	40/30	610
ETH 8-row HG <sup>3)</sup>	3,00	3,35	8	60/44	940
ETH 12-row HG <sup>3)</sup>	3,00	5,15	12	70/51	1.330
ETH 15-row HG <sup>3,6)</sup>	3,20	6,50	15	90/66	1.730
ETH 18-row HG <sup>3,7)</sup>	4,80	7,85	18	130/96	2.070
ETH 18-row HG <sup>4)</sup>	3,00	7,85	18	130/96	2.260
ETH 24-row HG <sup>3,5)</sup>	6,70	10,55	24	160/118	2.650
ETH 24-row HG <sup>4)</sup>	4,90	10,55	24	160/118	2.860

1) with additional frame - gauge wheels in the tractor track

2) standard version - depending on row spacing - details upon request or on the order confirmation

3) hydraulic folding - tripple frame

4) hydraulic folding - double fold, 4 pcs. airwheels 18x8.50 instead of upper link steering, Kat. II on 18-rows, Kat. III on 24-rows

5) 4 gauge wheels instead of upper link steering and 1 rubber wheel on the side wing

6) 2 gauge wheels instead of upper link steering and 1 rubber wheel on the side wing

7) 4 gauge wheels instead of upper link steering

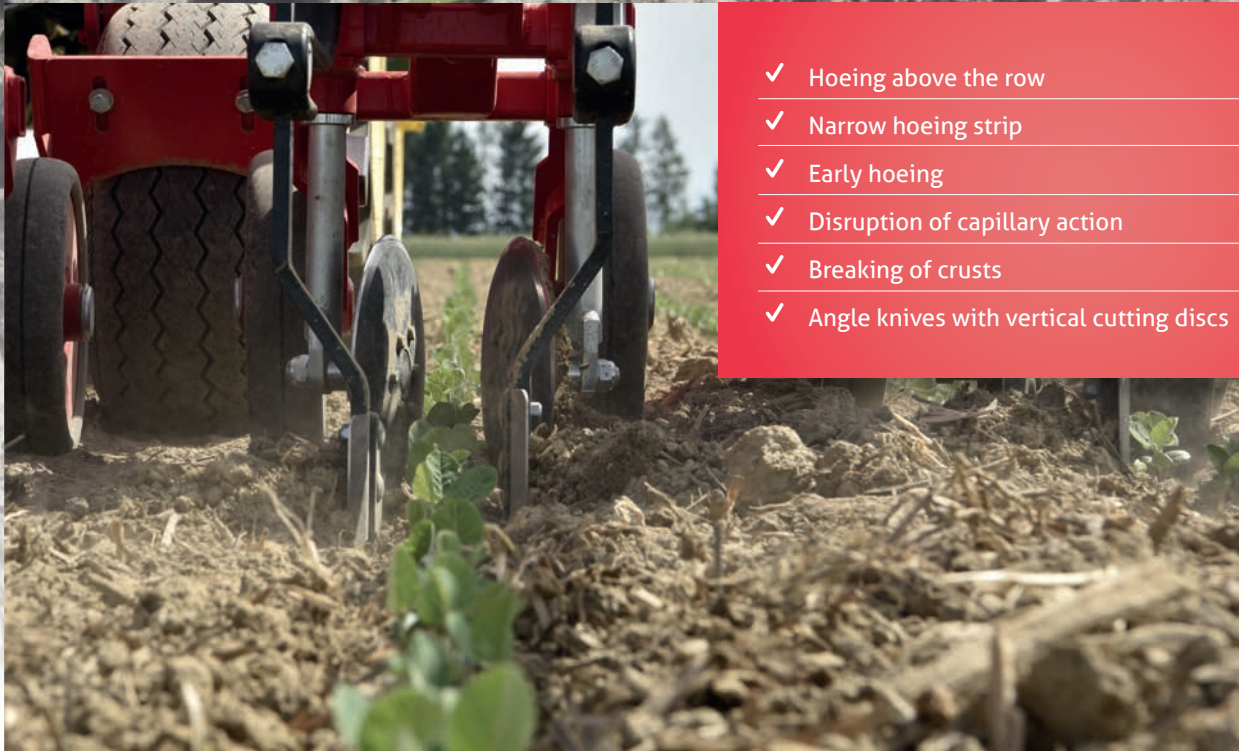
## Row crop cultivator CHOPSTAR-TWIN

The CHOPSTAR-TWIN was developed for hoeing exactly above the row. The hoeing parallelogram does not operate in the classic way in between the rows but directly above the row. The result is a very narrow hoeing strip and the hoeing can be done at a very early stage of the crop growth and very narrow to the crop. The hoeing element consists of two vertical cutting discs that are adjustable in angle and distance, and two angle knives following the discs. Two Farmflex wheels running close to the crop row allow a very exact adjusting of the working depth. The CHOPSTAR-TWIN is suited for special crops, grain, soybean, vegetables, etc.

## TECHNICAL DATA

- » Depending on the specification and the configuration, mainly the width of the sweeps, the row spacing can be adjusted from 30 cm up to 75 cm
- » Lower links guided on both sides
- » Mounting category CAT II / from 18 row triple frame, CAT III
- » Automatic top link steering with spindle and high-gauge wheels
- » Adjustable retraction support on each parallelogram
- » Two adjustable Farmflex-feeler wheels, bearing mounted, ø 300 mm / 65 mm wide per parallelogram
- » Robust, adjustable parallelogram
- » 2 vertical cutting discs, ø 220 mm adjustable in angle and distance
- » Vibrotine 40x12 with holder 35x11 and angle knife 160 mm incl. guiding plate
- » Hoeing parallelogram mounted above the crop row

# CHOPSTAR-TWIN



- ✓ Hoeing above the row
- ✓ Narrow hoeing strip
- ✓ Early hoeing
- ✓ Disruption of capillary action
- ✓ Breaking of crusts
- ✓ Angle knives with vertical cutting discs



TWIN



The hoeing element consists of two vertical cutting discs followed by two angle knives. The result is a very narrow unworked area and the hoeing can be done at a very early stage of the crop growth and very narrow to the crop.



Type/working width	Info	Hoe kg	Weight approx. kg
ROW-GUARD 500	for frame up to 6,99 m	≤ 2.500	390
ROW-GUARD 500 SR	for frame up to 12,2 m	≤ 3.900	530
ROW-GUARD 500 SRHD	for frame up to 12,2 m	> 4.000	960

## Camera steering system ROW-GUARD

The ROW-GUARD camera steering system guides hoes precisely, even in high speed. Via a control unit in the tractor cabin the precision guidance system can be adjusted comfortably. The picture captured by the camera is being analyzed on spots with a high concentration of green/blue, green/yellow and red pixel. With help of the available information about row configuration of the crop (row spacing, number of rows, etc.) a raster is put on top of the picture. This data builds the basis for the information provided to the offset frame which guides the hoe exactly in between the rows.

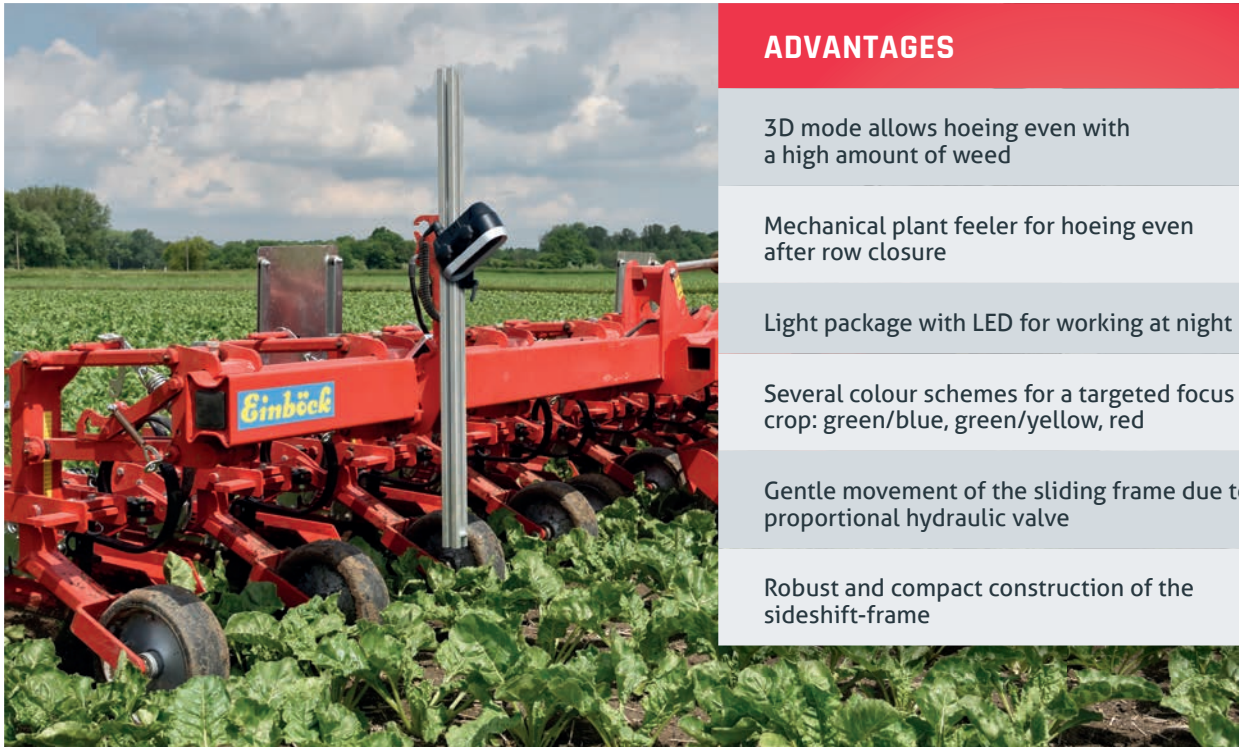
## TECHNICAL DATA

- » Sideshift-frame with total offset of 500 mm
- » Upper and lower links guided on both sides
- » Upper and lower links equipped with hardened bushings
- » Mounting category CAT II / category CAT III for type SR and SRHD
- » Quick couplers for quick changing of the inter-row crop cultivator
- » Guidance shafts made from high-strength, coated metal for minimised wear and tear
- » Parking support when ordered without hoe
- » Camera with 2 vertically placed, high definition lenses with different exposure for improved operation in changing light conditions (connection cable, length 4 m)
- » Special features:
  - Color mode (green/blue, green/yellow, red)
  - 3D-Mode (recognition of crop rows due to different height)
  - Recognition of different row structures (single or multiple rows)
  - Automatic recognition of camera height and angle (via 3D-mode)
  - Integrated chart for recommended camera height
  - Automatic switching of offset
  - Saving of settings
- » Proportional hydraulic valve: Dynamic valve control for smooth operation of the sideshift frame
- » Wheel sensor with holder and cable (length 3 m) suitable for the stabilising wheels of the ROW-GUARD - in case it is ordered
- » Sensor on the upper link to determine the position of the 3 point linkage





- ✓ Precision guiding system
- ✓ Even at high working speeds
- ✓ Easy, user-friendly interface
- ✓ Large field of view over several rows
- ✓ Increased working precision
- ✓ Efficient weed control



## ADVANTAGES

3D mode allows hoeing even with a high amount of weed

Mechanical plant feeler for hoeing even after row closure

Light package with LED for working at night

Several colour schemes for a targeted focus on the crop: green/blue, green/yellow, red

Gentle movement of the sliding frame due to the proportional hydraulic valve

Robust and compact construction of the sideshift-frame



High-resolution HD lenses ensure high-quality image processing, which means that the crop can already be cultivated in very early stages. The control unit with touchscreen and integrated video-monitor and universal-holder is in the tractor cab.



Type/Working width	Transport width in m <sup>2)</sup>	Frame length in m	Hilling elements	HP/KW	Weight approx. kg
EHG 2-row RIGID <sup>1)</sup>	1,60	1,60	3	20/15	360
EHG 4-row RIGID	3,00	3,00	5	40/30	600
EHG 4-row HG <sup>3)</sup>	2,80	3,00	5	50/37	720
EHG 6-row RIGID	4,40	4,40	7	60/44	850
EHG 6-row HG <sup>3)</sup>	3,00	4,40	7	60/44	980
EHG 8-row RIGID	5,80	5,80	9	80/59	1.040
EHG 8-row HG <sup>3)</sup>	3,20	5,80	9	80/59	1.350
EHG 12-row HG <sup>3,5)</sup>	4,80	8,60	13	120/88	1.580
EHG 12-row HG <sup>4)</sup>	3,00	8,60	13	140/103	2.100

1) with support - gauge-wheel behind the tractor track

2) depending on row distance - detail upon request or on order confirmation

3) hydraulic folding - triple-frame

4) hydraulic retraction - double folding frame, folds to 3 m transport width with 4 air wheels 18x8.50 instead of upper link steering - Cat. II

5) 4 gauge wheels instead of upper link steering

## Ridger HILLSTAR

The HILLSTAR is a ridger for hill-crops with large, concave discs. These machines are used to push soil up in hill-crops. A pre-loosening tine breaks up the soil and the inclined discs transport the earth, pulled down by erosion, up the hill again.

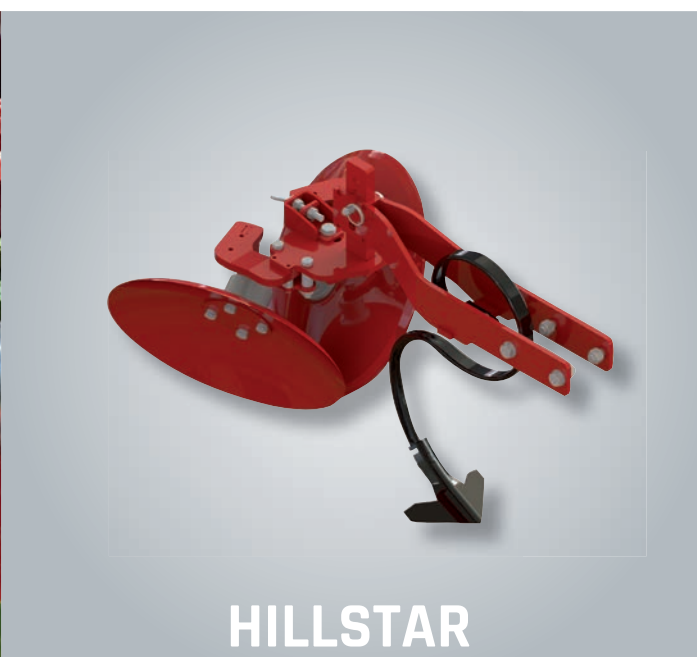
Due to the large smooth discs no hair roots of the crop close to the surface are harmed. The discs have high quality, maintenance free bearings and can be ideally adjusted in the angle. The optional guided hill-weeder (3 sections) additionally fights weeds.

## TECHNICAL DATA

- » Soil loosening tine with sweep 180 mm
- » Row distance variable between 65 and 70 cm
- » Lower links guided on both sides
- » Mounting category CAT II
- » Automatic top link steering with spindle and high-gauge wheels
- » Adjustable retraction support on each parallelogram by spring
- » Robust, adjustable parallelogram
- » Farmflex-feeler-wheels adjustable through spindles, ball bearing mounted, ø 300 mm / 100 mm wide
- » Separate depth adjustment of the hilling discs in a breadboard
- » Hilling discs laterally adjustable
- » Exact adjustment of the disc angle



- ✓ Ridger with concave discs
- ✓ Perfect mechanical weeding
- ✓ Increased aeration
- ✓ Disruption of capillary action
- ✓ Discs adjustable in the angle
- ✓ Ridger for hill-crops



HILLSTAR



The element of the HILLSTAR is equipped with big, concave discs. They do an excellent job in hilling of the crops.



Type/working width	Transport width in m <sup>2)</sup>	Frame length in m	Hoe elements	HP/KW	Weight approx. kg
<b>Maize version: row distance adjustable 60 - 70 cm</b>					
EMR 2-row RIGID <sup>1)</sup>	1,90	1,60	3	20/15	550
EMR 4-row RIGID <sup>1)</sup> or HG <sup>3)</sup>	3,00 bis 3,30	3,00	5	50/37	820 - 1.080
EMR 6-row RIGID or HG <sup>3)</sup>	3,00 bis 4,70	4,40	7	60/44	920 - 1.180
EMR 8-row HG <sup>3)</sup>	3,20	5,80	9	80/59	1.450
<b>Potatoe version: row distance adjustable 60 – 70 cm</b>					
EKR 2-row RIGID <sup>1)</sup>	1,90	1,60	3	20/15	520
EKR 3-row RIGID <sup>1)</sup>	2,50	2,30	4	30/22	490
EKR 4-row RIGID or HG <sup>3)</sup>	3,00 - 3,30	3,00	5	50/37	750 - 1.010
EKR 6-row RIGID or HG <sup>3)</sup>	3,00 - 4,70	4,40	7	60/44	800 - 1.060
EKR 8-row HG <sup>3)</sup>	3,20	5,80	9	80/59	1.450
EKR 12-row HG <sup>4)</sup>	3,00	8,60	13	140/103	2.000

1) with support - gauge wheel behind the tractor track

2) depending on row distance - detail upon request or on order confirmation

3) hydraulic folding - triple-frame

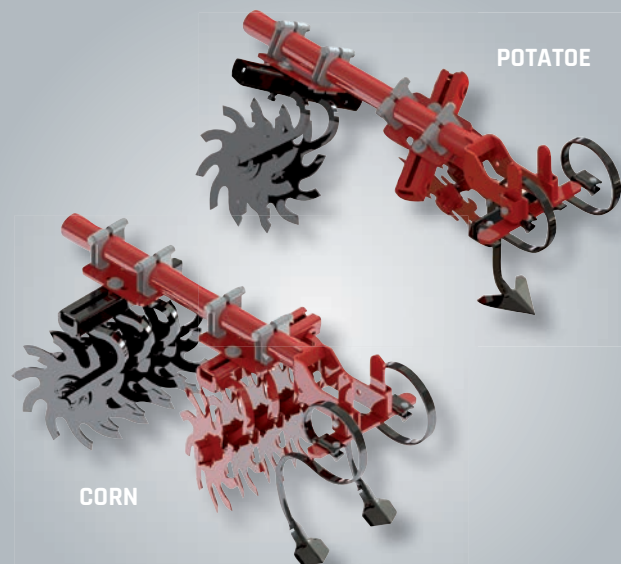
4) hydraulic folding - double folding frame, 3 m transport width with 4 air wheels 18x8.50 instead of upper link steering - Cat. II

## Rollstar cultivator ROLLSTAR

The ROLLSTAR is a row-crop cultivator with rolling hoe-stars. These cultivators are mainly used in light soils. This machine is mainly used by clients who want to use it on a variety of crops like potatoes, vegetable, maize, etc. Depending on the row spacing the machine is equipped with a variable number of rolling hoe-stars. Height adjustable pre-loosening tines in front of the stars support the work for the following stars.

### TECHNICAL DATA

- » Height-adjustable pre-loosening tine with wide sweeps per hoe element
- » Row distance infinitely variable up to 70 cm
- » Lower links guided on both sides
- » Mounting category CAT II
- » Autom. top link steering with spindle and high-gauge wheels
- » Adjustable retraction support on each parallelogram by spring
- » Robust, adjustable parallelogram
- » Farmflex-feeler-wheels adjustable through spindles, ball bearing mounted, ø 300 mm / 100 mm wide
- » Active wear resistant hoe stars
- » Hoe stars with angular roller bearing – individually removable



**ROLLSTAR**



Depending on the row spacing the machine is equipped with a variable number of rolling hoe-stars. Height adjustable pre-loosening tines in front of the stars support the work for the following stars.



Type	Weight approx. kg	Working width in cm	HP/KW	Line spacing mm	Tines
EXTREM 400	1.550 - 1.820	380	90/66	40-105	36-160
EXTREM 500	1.780 - 2.020	480	110/81	48-105	46-196
EXTREM 600	1.980 - 2.200	580	140/103	48-105	56-240
EXTREM 700	2.430 - 2.830	680	170/125	48-105	64-272
EXTREM 800	2.710 - 3.070	780	200/147	48-105	74-316

Details depend on the equipment arable (harrow tine section or mini seedbed tine section) and the following crumblers.

## Seedbed combination EXTREM

The seedbed combination EXTREM is mainly used for seedbed preparation in light or heavy soil and every type of soil after ploughing, depending on the tool equipment.

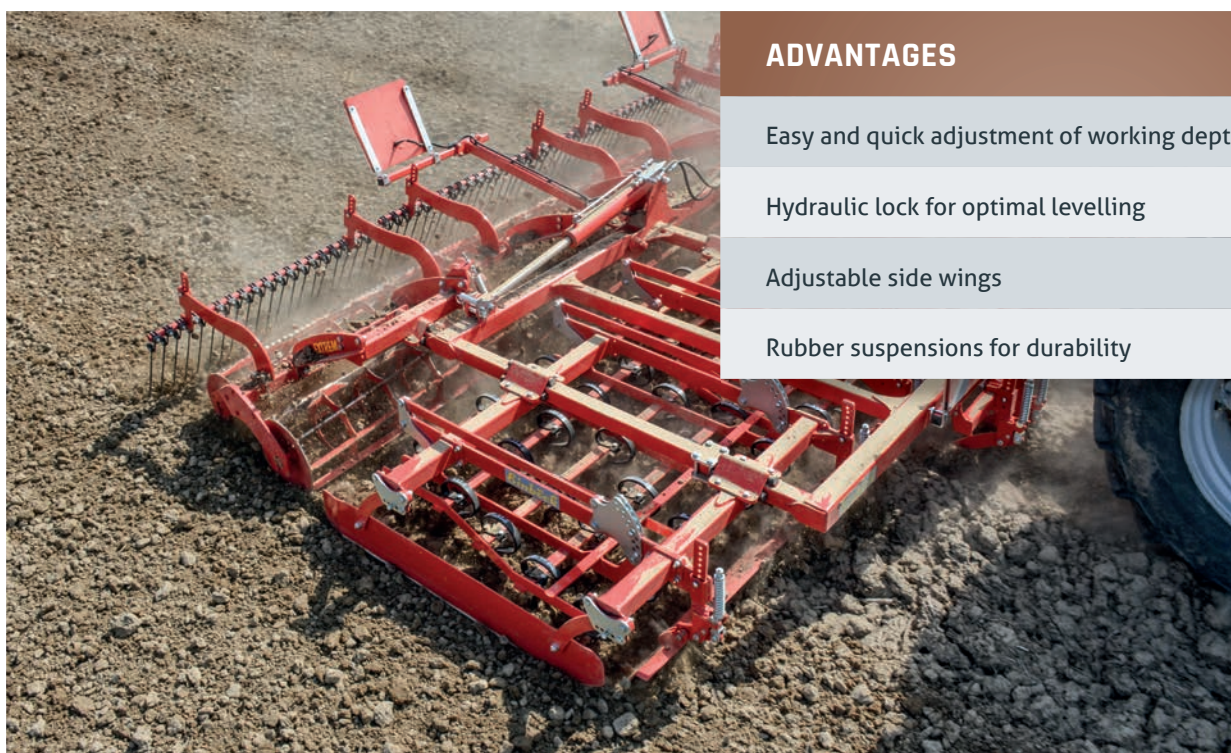
The „harrow-harrow“-combination is very well suited for heavy and sticky soil conditions without stones. Two harrow-sections are mounted one behind the other, the front of the sections is hanging on chains.

## TECHNICAL DATA

- » Hydraulic folding for 3 meter transport width
- » Hydraulic folding, stable transport position; transport width always under 3.00 m.
- » 2 ZW = Serrated crumbler  $\varnothing$  320 mm and 280 mm
- » 2 FZ = Flat rod crumbler  $\varnothing$  380 mm and
- » Serrated crumbler  $\varnothing$  320 mm
- » 2 E = Harrow section instead of crumbler
- » Frame protected against vibrations with rubber suspension at the sections and crumblers
- » Working depth parallel adjustable via breadboard
- » Closed, compact steel-tube frame
- » Lower link bolts guided on both sides
- » Lower link and top link are provided with hardened wear-resistant bushings
- » Double-acting hydr. cylinders for folding
- » Hydr. lock block for fixing in transport position
- » Side wings adjustable - rigid or floating
- » Mounting category II + III
- » Screwed crumbler axles
- » Ball bearing mounted crumblers
- » Parking support
- » Transport width 3 m
- » Holder for track loosener and levelling plate



- ✓ Very good job for years
- ✓ Robust construction
- ✓ Constant tool guidance
- ✓ Exact control of working depth
- ✓ Big flat rod and serrated crumbler
- ✓ Several tines available



## ADVANTAGES

- Easy and quick adjustment of working depth
- Hydraulic lock for optimal levelling
- Adjustable side wings
- Rubber suspensions for durability



The seedbed combination EXTREM is mainly used for seedbed preparation in light or heavy soil and nearly every type of soil after ploughing, depending on the tool equipment.



Type, Working width in cm	Sections	HS/KW	Line spacing mm /Tines	Weight approx. kg
<b>STANDARD 390</b>	4	75/55		
Arable harrow tine sections, without crumbler			48/80	630
Arable harrow tine sections, 1-row crumbler ø 280 mm			48/80	800
<b>STANDARD 490<sup>1)</sup></b>	4	95/70		
Arable harrow tine sections, without crumbler			48/100	730
Arable harrow tine sections, 1-row crumbler ø 280 mm			48/100	920
<b>STANDARD 590<sup>1,2)</sup></b>	6	115/85		
Arable harrow tine sections, without crumbler			48/120	1.040
Arable harrow tine sections, 1-row crumbler ø 280 mm			48/120	1.290

1) Requires double-acting hydr. remote, final position lock on the hydr. cylinder

2) no quick coupling bar

## Seedbed harrow STANDARD

This inexpensive yet robust arable harrow tine combination with simple hydraulic folding (tines show to the outside) is designed for tractors from 75 to 115 hp. The STANDARD has been doing a very good job for years especially in towing.

## TECHNICAL DATA

- » Arable harrow tine section, turnable, (= version for stony soil)
- » Lower lift links guided on both sides from 4.9 m working width
- » Lower and top lift links are equipped with hardened bushings
- » Mounting category CAT II until 4.90 m / II + III from 5.80 m
- » Optional crumbler ø 280 mm
- » Pressure bar for pushing down the sections
- » Screwed crumbler axles
- » Parking support
- » Transport width 2.2 m - 2.9 m



# STANDARD



- ✓ Low wear costs
- ✓ High area output
- ✓ Robust arable harrow tine combination
- ✓ Inexpensive and a very good job for years
- ✓ Hydraulic folding
- ✓ Perfect for towing



## ADVANTAGES

- Reversible harrow section
- Seedbed combination STANDARD with 1-row serrated
- Robust frame construction
- Side wings will be locked easily



On the STANDARD seedbed combination the harrow section is reversible, ideal for a long working life.



Type	Working width in cm	Hydr. folding	Number of rows	Number of tines	HP/KW	Approx. weight in kg with 2-row crumbler
VIBROSTAR 4	390 - 1210	•	4	39 - 121	85/62 - 240/176	800
VIBROSTAR 5	400 - 600	•	5	40 - 60	90/66 - 150/110	730
VIBROSTAR F-4 <sup>1)</sup>	450 - 610	•	4	45 - 61	110/81 - 160/118	920

1) With front crumbler

## Seedbed cultivator VIBROSTAR

The spring tine combination VIBROSTAR is predominantly used on light, medium heavy and stony soil. Thanks to the specially designed frame with top-quality spring tines, it can handle a high amount of organic matter in the field and ensures an intense mixing of the soil. The VIBROSTAR is the ideal machine for seedbed preparation, also for areas with wintergreen and for secondary stubble cultivation. Depending on its tine arrangement the VIBROSTAR is also well-suited for incorporating liquid and solid manure as well as for fighting couch-grass (*agropyrum repens*).

Depending on its use the appliance is available in a 4-row or a 5-row version with varying tine shapes and tine lengths. The 4-row version is available with a front crumbler.

## TECHNICAL DATA

- » On Vibrostar 4-... + Vibrostar F-4... = tine arrangement 4-row
- » On Vibrostar 5-... = tine arrangement 5-row
- » Standard quality S-tine for long product life
- » Line spacing 10 cm
- » Holder for the levelling plate (on the hydraulically foldable version)
- » Parallelogram-guided trailing crumblers, height adjustable by a breadboard
- » Possibility to adjust weight distribution between the rollers on machines with double crumbler
- » All crumblers run on ball bearings, triple-sealed, solid heavy-duty cast-iron housing, replaceable crumbler axle
- » Working width 3,9 m - 12,1 m



- ✓ Handles a lot of trash
- ✓ Intense mixing of the soil
- ✓ High working speed
- ✓ Perfect crumbling seedbed
- ✓ 4-row or a 5-row version
- ✓ Big choice of divers crumblers



## ADVANTAGES

Working depth adjustment via bolts on a breadboard

VIBROSTAR with front crumbler

Intercrop seeding

Especially for intercrop seeding we offer pneumatic seeders with complete assembly sets, which can be easily retro-fitted

Levelling plate for perfect surface

Transport position less than 3 m



The VIBROSTAR enters the soil easily also in heavy soil conditions and keeps the working depth constantly. The vibrating spring tines mix and aerate the soil up to the working depth determined by you. Not only do they vibrate in the driving direction they also do so laterally while barely moving up or down. This way the working depth remains at the chosen setting.



Type/ Working width cm	Double drag tines	No. of beams/tines	Mounting category	HP/KW	Weight approx. kg
TAIFUN 250 <sup>1)</sup>	4	4/17	II	70/52	960 - 1.130
TAIFUN 300 <sup>1)</sup>	5	4/20	II	90/66	1.050 - 1.250
TAIFUN 400	6	4/26	II+III	110/81	1.660 - 1.960
TAIFUN 500	8	4/34	II+III	130/95	1.880 - 2.260
TAIFUN 600	10	4/40	II+III	160/118	2.050 - 2.450
TAIFUN 700	12	4/46	II+III	190/140	2.490 - 3.000
TAIFUN 800 <sup>2)</sup>	13	4/54	III	200/147	7.500 - 7.750
TAIFUN 900 <sup>2)</sup>	15	4/60	III	240/176	7.900 - 8.180
TAIFUN 1200 <sup>2)</sup>	20	4/80	III	340/250	9.200 - 9.550

1) rigid, not foldable

2) semi-trailed

## Cultivator TAIFUN

The Einböck universal cultivator TAIFUN is a multi-purpose, highly efficient machine. The TAIFUN is a classic machine for seedbed preparation due to its high and spacious frame construction – especially for areas with winter greening. The incorporation of liquid manure and organic fertilizer, as well as light stubble turning or second stubble cultivation and the combat of couch grass are ideal jobs for the TAIFUN.

## TECHNICAL DATA

### Taifun 2,5 m – 7 m rigid or hydraulically folding

- » Large spring tine Vulcanus 50x13, 525 mm clearance with standard share 53 mm
- » Hercules tine 70x12 available with surcharge
- » Solid frame construction
- » Tine arrangement on 4-beams
- » Line spacing 15 cm
- » Spring double drag tines between the last tine row and the rear roller – demountable without tools
- » Parking position for double drag tine on the frame, when they are not in use
- » Rear rollers parallelogram-guided and height adjustable in the half breadboard
- » All rollers with ball-bearings
- » Transport width 2.60 m
- » One double-acting hydraulic valve is required
- » Mounting CAT II+III with hardened bushings

### TAIFUN 8m – 9m -12m hydraulically folding and semi-mounted

- » Hercules tine 70x12, 580 mm clearance
- » Heavy frame, semi-mounted
- » Both sides guided lower link pins
- » Drawbar adjustable in length and holder for hydr. hoses
- » Tine arrangement on 4-beams
- » Line spacing 15 cm
- » Spring double drag tines between the last tine row and the rear roller – demountable without tools
- » Adjustment of the working depth via with half-hole grid breadboard on the rear roller
- » All rollers with ball-bearings
- » Parking position for double drag tines
- » Parking support with wheel chocks
- » 3 double-acting hydraulic valves necessary
- » Front support wheel - height adjustable



- ✓ Universally applicable
- ✓ Full-surface cut (depending on shares)
- ✓ Improves specifically soil quality
- ✓ For optimal crumbling and reconsolidation
- ✓ Effective operation on small and large areas
- ✓ Tine arrangement on 4 beams



## ADVANTAGES

- High frame clearance
- Exact adjustment of working depth
- Lock-blocks on hydr. cylinders
- Spring loaded double drag tines
- Enormous area efficiency is possible
- Sophisticated folding mechanism



The high frame clearance ensures operation without clogging, especially in fields with high residue or organic matter.



Type/ Working width cm	Number of beams	Number of tines	HP/KW	Weight approx. kg <sup>1)</sup>
HURRICANE 260	4	13	100/74	950 - 1.515
HURRICANE 300	4	15	120/88	1.010 - 1.595
HURRICANE 420	4	21	150/110	1.840 - 2.700
HURRICANE 460	4	23	180/132	1.950 - 2.890

1) Weight without levelling tools

## Universal cultivator HURRICANE

The universal cultivator HURRICANE combines three machines in one. The HURRICANE is the ideal machine for stubble turning right after harvest. The machine supports soil life and structure, prevents erosion and ensures a good soil structure. Another job the machines is very effective in is breaking up of soil compactions or intensive seedbed preparation. The machine leaves a levelled, reconsolidated surface. The HURRICANE is a versatile, universal machine which can work on big and small areas very effectively.

## TECHNICAL DATA

- » Tine arrangement 4 rows
- » Line spacing 20 cm
- » Frame clearance 80 cm
- » Working depth hydraulically adjustable - 1 double acting hydraulic valve required
- » Rigid tines with shear-bolt stone protection
- » Transport width 2.70 - 3.00 m
- » Optimal penetration even on heavy soil conditions due to adjustable tine angles
- » Rear rollers ball bearing mounted
- » Category III lower link width (Cat. II up to 3 m)
- » Lower links guided on both sides
- » From 4,20 m working width, hydr. folding, locking in working- and transport position via hydr. safety block (1 additional double acting hydraulic valve required)



- ✓ Big range of rear rollers
- ✓ High number of tines ensure excellent mixing
- ✓ Complete tillage of the full surface
- ✓ Big number of options
- ✓ Universal use
- ✓ Excellent straw distribution



## ADVANTAGES

- Perfection with 4-beam arrangement and high frame clearance
- Adjustable tine angle
- Two linkage positions
- No need for re-adjustment of levelling discs
- Hydraulic working depth



The 4-beam arrangement ensures a good incorporation of straw and organic material. Because of the generous 4-bar frame construction, work without blocking is possible even in heavy sticky soil and a high amount of organic matter.

# FRONT ROLLER FRONT-STAR



Type, working width in cm	HP/KW	Weight approx. kg
FRONT-STAR 250	95/70	560
FRONT-STAR 300	110/80	640

## Front roller FRONT-STAR

The 3-row star arrangement and the far star point distance cut the clods up also in humid and extremely heavy soil. The star points break optimally into the ground, which causes a very good cutting. If the front hydraulic is able to force pressure, the star points can break up the soil even more. The interlinking of the star rows makes a clumping of the soil impossible even in extreme conditions. A recompaction of the soil can take place with the FRONT-STAR only with heavy soil.

## TECHNICAL DATA

- » RIGID or mechanical steering
- » Lower link guided on both sides
- » Star disc arrangements 3 rows
- » Tool diameter Ø 400 mm
- » Spring-mounted levelling plate
- » Mount category of the tractor CAT II
- » Working widths 2,5 m and 3 m





Type, working width in cm	HP/KW	Weight approx. kg
FRONT-SPIKE 250	95/70	850
FRONT-SPIKE 300	110/80	960

## Front roller FRONT-SPIKE

Through their perfect shape and the narrow-spaced 3-row adjustment, the special spike discs will mix finely granulated and rough soil ideal. As the discs overlap there is no danger that the roller will be clogged even in humid soil conditions. On ploughed, slightly sandy soil the FRONT-SPIKE is the perfect implement for levelling and recompacting the seedbed. The FRONT-SPIKE is also applicable for stony conditions without any problems.

The spring loaded tine-bar, which is height adjustable without tools, levels the plough clod and crushes the remaining clumps.

## TECHNICAL DATA

- » RIGID or mechanical steering
- » Lower link guided on both sides
- » Spike disc arrangements 3 rows
- » Tool diameter Ø 400 mm
- » Spring mounted dragging tine 1 row
- » Mount category of the tractor CAT II
- » Working widths 2,5 m and 3 m

# GRASSLAND WEEDER GRASS-MANAGER



Type/Working width cm	Number of tines	Support wheels	Folding rigid	hydr.	HP/KW	Weight approx. kg
GRASS-MANAGER 150	60	2	•		20/15	190
GRASS-MANAGER 200	84	2	•		25/18	200
GRASS-MANAGER 300	120	2	•		30/22	250
GRASS-MANAGER 450	180	4		•	40/29	520
GRASS-MANAGER 500	204	4		•	50/37	540
GRASS-MANAGER 600	240	4		•	60/44	640
GRASS-MANAGER 600 SR <sup>4)</sup>	240	4		•	60/44	800
GRASS-MANAGER 750	300	4		•	70/51	870
GRASS-MANAGER 900 <sup>1,3)</sup>	360	4		•	80/59	1.170
GRASS-MANAGER 900 SR <sup>3,4)</sup>	360	4		•	80/59	1.260
GRASS-MANAGER 1200 <sup>2,3)</sup>	480	4		•	90/66	1.310
GRASS-MANAGER 1200 SR <sup>3,4)</sup>	480	4		•	90/66	1.420

1) can be extended to 12 m working width  
2) can be reduced to 9 m working width

3) shear folding  
4) SR = heavy frame for contractors or communities

## Grassland weeder GRASS-MANAGER

The long-established grassland weeder GRASS-MANAGER is especially designed for that purpose. It aerates and dethatches the turf. Furthermore, it crushes plants residues, manures and mixes the material. Conventional devices for towing perform these tasks poorly. The tines are designed for long life and can be adjusted in the working angle. Due to their design they have always contact to the grassland, also on uneven terrain. The GRASS-MANAGER can be equipped with levelling boards to even molehills. The support wheels are running in front of the weeder sections and ensure an accurate guidance.

A GRASS-MANAGER with pneumatic seed drill results in the PNEUMATICSTAR.

## TECHNICAL DATA

- » Mounting category CAT I up to 5 m / CAT II from 6 m
- » Tines Ø 7 mm, 490 mm long
- » Non-twisting tine pipe – weeder sections 6-rows with central tine adjustment
- » Line spacing 2.5 cm
- » Large, bearing mounted support wheels, Dimension 16 x 6.50/8 (shear retraction: 18 x 8.50/8 on the mainframe)
- » Automatic folding of the wings through parallel guiding
- » Parking support (only for foldable machines)
- » Machines with shear folding require 2 double-acting hydraulic remotes
- » Transport width 1.50 m – 3.00 m

# GRASSLAND WEEDER GRASS-MANAGER-PRO



Type/Working width cm	Number of tines	Support wheels	Folding rigid	hydr.	HP/KW	Weight approx. kg
GRASS-MANAGER-PRO 300	120	4	•		60/44	670
GRASS-MANAGER-PRO 600	240	6		•	80/59	1.280
GRASS-MANAGER-PRO 1200 <sup>1)</sup>	480	8		•	170/125	4.450

1) trailed

## Grassland weeder GRASS-MANAGER PRO

The GRASS-MANAGER-PRO is the consequent further developed version of the GRASS-MANAGER that has been proven in years. Every section is mounted on a parallelogram. One hydraulic cylinder per section ensures a perfect adaption to uneven ground and an optimal pressure compensation of the sections. The pressure can easily be adjusted from the tractor. A heavy triangular front levelling plate in front of the support wheels evens the mole hills.

## TECHNICAL DATA

- » Tines ø 8 mm, 490 mm long (serial)
- » mounting category CAT II
- » Frame hydraulically foldable with single acting cylinder - on 6 m machine
- » Heavy, spring suspended front levelling bar (triangular) working in front of the support wheels
- » Weeder sections parallel guided with hydraulic level control
- » Improved vibrating effect because of special tine holder
- » Line spacing 2.5 cm
- » Large, bearing mounted support wheels Dimension 16 x 6.50/8 (on the main frame duals)
- » Parking support
- » Transport width 3.00 m



Type/Working width cm	Number of tines	Seeding rollers <sup>8)</sup>	Deflector plates	Folding rigid	hydr.	HP/KW	Weight approx. kg
PNEUMATICSTAR 200 <sup>1)</sup>	84	B,E	8	•		25/18	260
PNEUMATICSTAR 300 <sup>1)</sup>	120	B,E	8	•		30/22	350
PNEUMATICSTAR 500 <sup>1)</sup>	204	C,E	8		•	50/37	580
PNEUMATICSTAR 600 <sup>1)</sup>	240	C,E	8		•	60/44	690
PNEUMATICSTAR 600 SR <sup>1)</sup>	240	C,E	8		•	80/59	920
PNEUMATICSTAR 600 NR <sup>5,7)</sup>	240	C,F	8		•	80/59	1.100
PNEUMATICSTAR 900 <sup>2,3,4)</sup>	360	G,H	12		•	80/59	1.400
PNEUMATICSTAR 900 SR <sup>2,4,6)</sup>	360	G,H	12		•	80/59	1.490
PNEUMATICSTAR 1200 <sup>2,4)</sup>	480	D,F	16		•	90/66	1.650
PNEUMATICSTAR 1200 SR <sup>2,4,6)</sup>	480	D,F	16		•	90/66	1.760

1) Electric double fan 12 Volt

2) Mechanical fan with PTO-shaft (540 rpm or 1000 rpm)

3) can be extended to 12 m working width

4) Shear retraction

5) STI-version not available in stainless steel

6) SR = version not available in stainless steel

7) NR = with mechanical fan, also suited for the distribution of fertilizer (seeding unit as well as distribution plates made from stainless steel), stronger gearbox, no European folding - frame SR version (heavy frame)

8) see photo of the seeding rollers on page 50

## Grassland seeder PNEUMATICSTAR

The PNEUMATICSTAR is designed for grassland care, seeding, under- and reseeding. It has a steady frame and - is depending on the working width - rigid or hydraulically foldable. Using high-quality materials and with the special, solid construction you can put additional pressure on the 6-row tine sections in hard soil conditions.

## TECHNICAL DATA

- » Mounting category CAT I up to 5 m (16'4.8") / CAT II from 6 m (16'8.22")
- » Hardened and tempered joint bolts, equipped with bushings
- » Tines Ø 7 mm (0.28"), 490 (1.93") mm long
- » Non-twisting tine pipe – weeder sections 6-rows with central tine adjustment
- » Improved vibrating effect because of special tine holder
- » Free movement of the tine (no danger of breaking)
- » Plastic protection of the weeder forks (no wear and tear of the steel pipes)
- » Line spacing 2.5 cm
- » Large, bearing mounted support wheels, dimension 16 x 6.50/8 (shear folding: 18 x 8.50/8 on the mainframe)
- » Automatic folding of the wings through parallel guiding
- » Parking support
- » Machines with shear folding require 2 double-acting hydraulic remotes
- » Transport width 1.50 m – 3.00 m



- ✓ Perfect for reseeding and underseeding
- ✓ Stimulating the tillering of the grass turf
- ✓ For ideal grassland quality
- ✓ Adapt very good to the soil surface
- ✓ Yield increase
- ✓ Weed out weeds like stalked meadow grass



## ADVANTAGES

- Perfect for under- or reseeding
- Electrical quantity dosage
- Line spacing of 2,5 cm / 1"
- Exact tine position and movement
- Spring tines adjustable with a central lever
- Stop bar for perfect adaption to the surface
- Transportation lock with a rope pull



The PNEUMATICSTAR can be equipped either with the seeder P-BOX-MD with mechanical drive, or with the P-BOX-STI, a seeder whose application rate is electronically controlled with the SPEED-TRONIC control. (see pages 50-51)





Type/Working width cm	Number of tines	Seeding rollers <sup>6)</sup>	Distribution plates	Folding rigid hydr.	HP/KW	Weight approx. kg
PNEUMATICSTAR-PRO 300 <sup>1,3)</sup>	120	B,E	8	•	50/37	790
PNEUMATICSTAR-PRO 600 <sup>1,4)</sup>	240	C,E	8	•	80/59	1.370
PNEUMATICSTAR-PRO 1200 <sup>2,5)</sup>	480	D,F	16	•	170/125	4.440

1) Electric double fan 12 Volt

2) hydraulic fan with oil pressure manometer (requirements: pressure free return line, maximum capacity of the oil pump must not exceed 50 litres;

3) 1 double-acting hydraulic valve necessary

4) 1 double-acting and 1 single-acting hydraulic valve necessary

5) 3 double-acting hydraulic valves and 1 single-acting hydraulic valve with pressure free return line necessary

6) see photo of the seeding rollers on page 50

## Grassland seeder PNEUMATICSTAR-PRO

The PNEUMATICSTAR-PRO is constructed as professional machine for grassland restoration. The machine has 3, 6 or 12 meter working width and an extremely solid construction. A heavy levelling board which is overload-protected by springs, levels molehills in front of the support wheels. It is adjusted "on hold", which lifts the soil and spreads it loose in the turf. Pores in the soil are not smeared up!

As the support wheels are behind the levelling plate the machine works very smoothly at a high working speed.

## TECHNICAL DATA

- » Tines ø 8 mm, 490 mm long
- » Lower and upper links equipped with hardened bushings
- » Spring mounted heavy levelling board, triangular, working in front of the support wheels
- » Weeder sections parallel guided with hydraulic level control
- » Mounting category II
- » Non twisting tine pipe – weeder sections 6 rows with central tine adjustment
- » Improved vibrating effect because of special tine holder
- » Line spacing 2.5 cm
- » Large, bearing mounted support wheels Dimension 16 x 6.50/8 (on the main frame duals)
- » Parking support with filling steps
- » Transport width 3.00 m
- » Pneumatic seeder with stirring shaft and separate section on the seeding roller per hose
- » Tank volume 300 litres



- ✓ Hydraulic level control
- ✓ Exact application of seeds
- ✓ Grooves will be de-thatched
- ✓ Extremely solid construction
- ✓ Spring mounted levelling plate
- ✓ Levelling plate adjusts "on hold"



## ADVANTAGES

- Hydraulic pressure regulation for more efficiency
- Electrical quantity dosage
- Heavy levelling board
- Folding joints ensures optimal terrain following
- Line spacing of 2,5 cm / 1"
- Plastic fork-support - no wear of steel tubes
- Exact tine position and movement
- Spring tines adjustable with a central lever



The PNEUMATICSTAR-PRO can be equipped either with the seeder P-BOX-MD with mechanical drive, or with the P-BOX-STI, a seeder whose application rate is electronically controlled with the SPEED-TRONIC control. (see pages 50-51)



# PNEUMATICSTAR-PRO 1200



## Grassland seeder

### PNEUMATICSTAR-PRO 1200

The PNEUMATICSTAR-PRO 1200 is designed for large-scale farms. The chassis, which is attached to the lower links of the tractor, is carried by two large dimensioned wheels. When in operation six additional support wheels on the wings will give the machine high operational stability. A stable sectional steel tube frame with cross braces will ensure that the frame of the weeder does not swing forward or backward.

## TECHNICAL DATA

- » Transport width of 3 m  
The sophisticated retraction mechanism together with putting the tines into the lowest angle position makes it possible to reduce the transport width to only 3 m
- » Tank volume of 500 l  
For an efficient working a tank with a volume of 500 litres standard.
- » Half-timbered construction  
The construction of the main frame enforced by cross braces is a guarantee for a long product life.



# SPORTS FIELD WEEDER SPORTSTAR



Type	Folding		HP/KW	Weight approx. kg	Sections
	rigid	hydr.			
SPORTSTAR 150	•		8/6	200	1 x 1,5
SPORTSTAR 200	•		10/7	230	1 x 2,1
SPORTSTAR 300	•		15/11	320	2 x 1,5
SPORTSTAR 450		•	20/15	560	3 x 1,5
SPORTSTAR 500		•	30/22	630	1 x 2,1 / 2 x 1,5
SPORTSTAR 600		•	40/29	740	4 x 1,5

## Sports field weeder SPORTSTAR

The SPORTSTAR is the ideal machine for grassland care and after-sowing on sports fields and golf courses. Depending on the equipment the SPORTSTAR is the best machine for all different kinds of work on grassland.

## TECHNICAL DATA

- » Flexible sections = best ground adaptation
- » Central adjustment of tines aggressiveness of the sections
- » Rapid coupling bar for easily couple and uncouple
- » No frame distortion therefore all tines are in a uniform position along Enhanced vibration- gyration effect due to special tine mountings
- » Tine spacing 13 mm
- » Tines Ø 6,5 mm, 490 mm lang
- » Tine-abrasion-length 100 mm
- » 2-component-varnish
- » Tine spacing 13 mm
- » Tine safety

# PNEUMATIC SEEDING BOX

## P-BOX-STI



Type/Working width	Working width up to <sup>3)</sup>	Tank volume litres	Distribution plates	Weight approx. kg	Seeding rollers <sup>4)</sup>
P-BOX-STI 600 <sup>1)</sup>	6,00 m	300	8	86	B, E
P-BOX-STI 1200 <sup>2)</sup>	12,00 m	300	16	105	D, F

1) for seeding of grain on 6.00 m working width a mechanical fan is needed  
2) with mechanical fan

3) with fine seeds  
4) seeding rollers see below

## Pneumatic seeding box P-BOX-STI

The P-BOX-STI is a pneumatic airseeder with electrical quantity dosage. The user-friendly SPEED-TRONIC control unit regulates the seed quantity depending on the factual working speed. The necessary speed info can be obtained via several sensors or via the 7-pole signal socket of the tractor.

With the P-BOX-STI (and also with the P-BOX-MD) it is possible to seed all standard seeds and their mixtures up to a size of 5 mm. Depending on the seeding rate and working speed it can be set to anywhere from 1 kg to 300 kg per hectare by a simple adjustment.

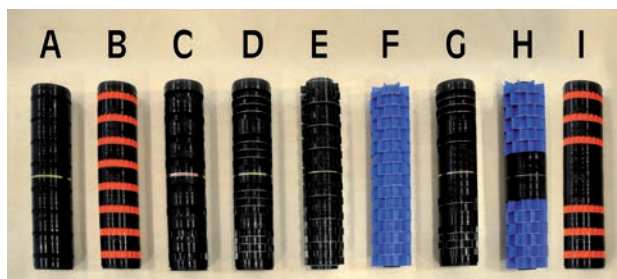
It can easily be retrofitted on Einböck machines and also on machines of other manufacturers.

## TECHNICAL DATA

- » Emptying opening, monitoring window
- » Calibration plate and calibration pan
- » Stirring shaft
- » Separate section on the seeding roller per hose, mounting console
- » Cable with big diameter and control unit
- » Specially designed distribution plates with splash guard
- » Included: seeding roller with coarse tothing (E) & seeding roller with fine tothing (C)



The operation terminal of the STI controller



All saw rollers for P-BOX-STI and P-BOX-MD

# PNEUMATIC SEEDING BOX P-BOX-MD



Type/Working width	Working width up to <sup>3)</sup>	Tank volume litres	Distribution plates	Weight approx. kg	Seeding rollers <sup>4)</sup>
P-BOX-MD 600 <sup>1)</sup>	6,00 m	300	8	86	B, E
P-BOX-MD 1200 <sup>2)</sup>	12,00 m	300	16	105	D, F

1) with the 6.00 m machine grain can be seeded up to 3.00 m for seeding of grain on 6.00 m working width a mechanical or hydraulic fan is needed

2) with mechanical fan

3) with fine seeds

4) seeding rollers see below

## Pneumatic seeding box P-BOX-MD

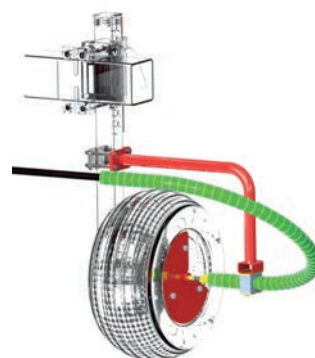
The P-BOX-MD is an air seeder which can be mounted easily and fast to any machine (tined weeders, cultivators, hoes, disc harrows...). It is driven by a rubber wheel or a following tail wheel.

With the P-BOX-MD (and also with the P-BOX-STI) it is possible to seed all standard seeds and their mixtures up to a size of 5 mm. Depending on the seeding rate and working speed it can be set to anywhere from 1 kg to 300 kg per hectare by a simple adjustment.

It can easily be retrofitted on Einböck machines and also on machines of other manufacturers.

## TECHNICAL DATA

- » Draining outlet with flexible drain hose (P-box-MD & STI)
- » Monitoring window (P-box-MD & STI)
- » Calibration plate and calibration pan (P-box-MD & STI)
- » Stirring shaft
- » Mechanic dosing drive
- » Mounting console
- » Cable with big diameter and control unit
- » Specially designed distribution plates with splash guard
- » Flexible drive shaft (length = 2.10 m)
- » Separate section on the seeding roller per hose
- » Included: seeding roller with coarse toothing (E) & seeding roller with fine toothing (C)
- » 6.00 machine with electric double fan, 12 volts
- » Container made of sheet steel



Ground drive of the P-BOX-MD

# PNEUMATIC SEEDING BOX JUMBO



Type	Weight approx. kg	Tank volume litres
JUMBO MZ	460	1.500

## Pneumatic seeding box JUMBO

The combination of pneumatic seeding box JUMBO and rear mounted hoes provides ideal weight distribution, reduces the number of necessary operations and reduces ground pressure. Depending on the number of rows up to 4 seeding units are available, which are driven by a ground wheel. Adjustment of the seeding rate is done simply via a handle. The fertilizer or seeds are blown to the distribution heads by a strong hydraulic fan. For long transport distance the front tank is equipped with a rotary air lock.

The front tank JUMBO is ideally combined with the row crop drill CHOPSTAR-SEEDER.

## TECHNICAL DATA

- » 1500 l / 42.5 bu / 53 cu-ft tank volume
- » Seeding unit made from stainless steel - painted
- » Hydraulic fan (1 single acting hydraulic valve with up to 30 l/min - 1.14 bu/min - 1.06 cu-ft/min capacity and pressure free return line with ¾" coupling necessary)
- » Big ground drive wheel with hydr. lifting cylinder (1 single acting valve necessary)
- » Variable gearbox for quantity regulation
- » Disconnectable agitation shaft
- » Up to 4 seed metering rollers
- » Calibration pan

# ROW CROP DRILL CHOPSTAR-SEEDER



Type	Seeding elements	Frame length m	HP/KW <sup>2)</sup>	Weight approx. kg
CHOPSTAR-SEEDER 6-row	6	2,45	70/51	420
CHOPSTAR-SEEDER 9-row HG <sup>1)</sup>	9	3,80	80/59	880
CHOPSTAR-SEEDER 12-row HG <sup>1)</sup>	12	5,15	90/66	1.080

1) hydraulic folding - triple-frame  
2) in combination with JUMBO-front tank

## Row crop drill CHOPSTAR-SEEDER

The row crop drill CHOPSTAR-SEEDER was especially developed for seeding legumes in rows, but also for other row crops in drill seeding. The transport and the dosage of the seeds is done by the front tank JUMBO.

## TECHNICAL DATA

- » Row-distance infinitely variable adjustable from 30 to 45 cm
- » Lower lift links guided on both sides
- » Mounting category CAT II
- » Adjustable retraction support on each parallelogram by spring
- » Adjustable FARMFLEX-pressure wheels, bearing-mounted,  $\varnothing$  360 mm / 33 mm wide
- » Adjustable parallelograms
- » Seeding shoe with wear skid
- » Hydraulic folding markers, adjustable in length
- » 3 double acting hydraulic remotes (plus additional ones for the JUMBO front tank) needed
- » Spring mounted track-loosener

# MECHANICAL INTERCROP SEEDER- DRILLBOX & MECHANICBOX



Type	Box width m	Transport width	Tank volume litres	Number of outlets	Weight approx. kg
DRILLBOX 260	2,72	2,95	215	8	145
DRILLBOX 300	2,84	3,00	230	9	150
MECHANICBOX 300	2,84	3,00	230	17	165

## Mechanical intercrop seeder DRILLBOX & MECHANICBOX

The Einböck DRILL- & MECHANICBOX can be mounted on any machine (cultivators, disc, harrows, ...). With this machine you can seed all sorts of intercrops and seed mixtures, from approximately 5 kg/ha. The specially designed distribution plates assure an evenly distribution of the seeds. The seeder is activated through a large tail wheel with actuation cartridge. High gusset plates inside the tank ensure exact seeding also in hilly terrain.

### TECHNICAL DATA

- » Exact seeding via shearing wheel system
- » Large bottom drive wheel Ø 600 mm with two long actuation metal drive cassettes
- » Distribution deflector plates
- » Monitoring window to the bottom of the tank
- » High gusset plates (equal distribution of the seeds to all deflector plates)
- » Lid cover (no seed loss when filling)
- » Calibration pan for calibration test

# MECHANICAL FERTILIZER BOX FERTIBOX



Type	Tanks	Outlets	Drives	Capacity in litre	Weight approx. kg
FERTIBOX 4-row	2	8	1	2 x 275 l	290
FERTIBOX 6-row	2	12	1	2 x 475 l	410
FERTIBOX 8-row	4	16	2	4 x 275 l	580

## Mechanical fertilizer box FERTIBOX

The mechanical fertilizer box FERTIBOX is usable only for rigid row-crop cultivators.

It enables precise application of different types of fertilizer in row crops. The combination of row fertilizer distributor and row-crop cultivator conserves working time and also the effect of the fertilizer is increased by working with the fertilizer directly into the soil.

## TECHNICAL DATA

- » Made from stainless steel
- » Ground drive
- » Operating instructions
- » Two outlets per row



» **Sustainability and environmental protection:**

We produce in an environmentally friendly, energy-efficient and in a raw material-saving way. We achieve this by operating electric forklifts, a wood chip heating system, a water treatment system, a photovoltaic system, state-of-the-art filter systems and much more.

» **Consulting and service:**

Our consulting and service is effective, fast and efficient. We are organic-experts and are happy to pass on our knowledge. In a long-term cooperations with our worldwide partners we are looking for new ideas and solutions for a modern agriculture.

» **Reliability and quality:**

Years of future-oriented work and constant investment in our production facilities brought our production technology to the highest level. Therefore we are a very reliable partner and improve the quality of our products constantly.

» **Honesty and loyalty:**

We treat our customers, employees or suppliers the same way we would like to be treated. It is handshake quality that counts and we stand by our statements!



*Our objective is production of market-oriented, user-friendly, innovative, high-quality products which help to protect the environment!*

Birgit and Leopold Einböck, CEO in 3rd Generation







- ✓ Foundation 1934
- ✓ Owner-managed family business
- ✓ One production location in Dorf an der Pram
- ✓ 100% in-house value chain
- ✓ Two sales outlets in France and the USA
- ✓ ~ 85 % Export



Family Einböck

## SPARE PARTS & SERVICE



- » **Original spare parts:**  
Only original Einböck tines and shares guarantee maximum service life and best quality. Because only with Einböck spare parts you will achieve the optimum of your Einböck machine.
- » **Competent service - worldwide:**  
Our dealers with their service staff are at your disposal worldwide. With our partners you always have a competent and reliable contact nearby. Our dealers have current product trainings, this ensures that they are always up-to-date and have best knowledge.
- » **Decades of availability:**  
We always have the right spare parts in stock, also for older types. Therefore we can send them quickly to you. This helps you getting the machine back in the field fast.
- » **Perfect accuracy of fit:**  
With the perfect accuracy of fit you save time and money while repairing. You always receive an original part from us, this means always the same quality like the original equipment.





» **OrganicPower:**

With decades of experience in organic farming, we have gathered a lot of know-how. Our experienced consultants and special machines are tailor-made to meet the challenges of organic farming. We pass this know-how on to customers worldwide! With POWER we transfer our knowledge to modern organic farmers!

➔ [www.einboeck.at/en/organicpower](http://www.einboeck.at/en/organicpower)

» **FusionPower:**

With FUSION POWER we advocate the combination of conventional and organic agriculture. We call the integration of organic ideas in conventional agriculture "Fusion Farming". Fusion takes the best solutions from both farming methods and thus brings farmers worldwide an increase in their efficiency and added value! We merge the different farming methods with POWER

➔ [www.einboeck.at/en/fusionpower](http://www.einboeck.at/en/fusionpower)

» **EventPower:**

At numerous events worldwide, but also in Upper Austria, we perform with POWER and ELAN. We are motivated to show our customers new ideas and solutions. We are present live at trade fairs, field days or demonstrations. Visitors can gain an insight into Einböck at our in-house training courses.

➔ [www.einboeck.at/en/eventpower](http://www.einboeck.at/en/eventpower)

» **InfoPower:**

We pass on our knowledge - our consultants are organic farmers or at least have an agricultural background. They know what they are talking about and are passionate about consulting. Enquiries and requests for improvement are taken seriously and dealt with. Information is passed on as quickly, accurately and openly as possible with POWER.

➔ [www.einboeck.at/en/infopower](http://www.einboeck.at/en/infopower)

» **FuturePower:**

We will continue to do research in the future and constantly update our equipment so that farmers are always up to date in respect of technology and knowledge. We test ideas and develop new solutions on our trial fields. In this way we guarantee that we will enter the FUTURE together with POWER. With modern production facilities and high product quality we want to continue producing in Dorf an der Pram, Upper Austria. We design our production to be modern, sustainable and environmentally friendly.

➔ [www.einboeck.at/en/futurepower](http://www.einboeck.at/en/futurepower)



WWW.EINBOECK.EU

# EINBÖCK

📍 Einböck GmbH & CoKG  
Schatzdorf 7  
4751 Dorf an der Pram  
Austria

☎ +43 7764 6466 0

📠 +43 7764 6466-390

✉ info@einboeck.at

**The joy in tillage!**

