

Technical sheet :

MAN'GO 33



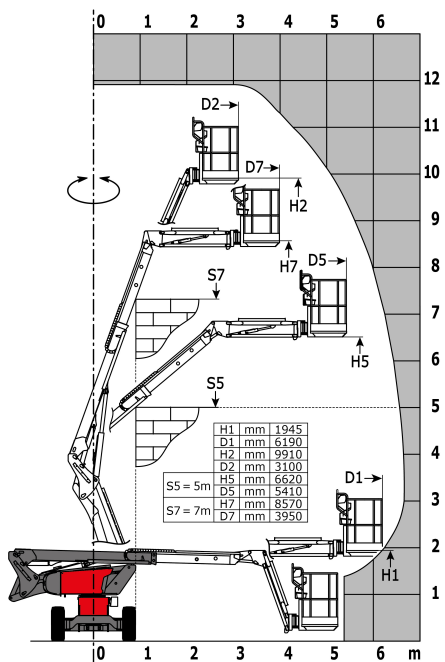
Capacities		Metric
Working height	h21	11.91 m
Platform height	h7	9.91 m
Max. outreach	r1	6.69 m
Overhang	h31	4.80 m
Pendular arm rotation (bottom)		+70 °
Platform capacity	Q	227 kg
Turret rotation		350 °
Platform rotation (right / left)		70 ° / 66 °
Number of people (inside / outside)		2 / 2
Weight and dimensions		
Platform weight*		4150 kg
Platform dimensions (length x width)	lp / ep	1.50 m x 0.98 m
Overall width	b1	1.80 m
Overall length	l1	5.50 m
Overall height	h17	2.01 m
Overall length (stowed)	l9	4.50 m
Overall height (stowed)	h18	2.49 m
Floor height (access)	h20	0.40 m
Jib length	l13	1.46 m
Internal turning radius (over tyres)	b13	1.72 m
External turning radius	Wa3	4.11 m
Ground clearance at centre of wheelbase	m2	0.32 m
Wheelbase	y	2 m
Performances		
Drive speed - stowed		5.20 km/h
Drive speed - raised		1 km/h
Gradeability		40 %
Permissible leveling		4 °
Wheels		
Tyres type		Super Elastic Solid Cushion
Dimensions of front wheels / rear wheels		0,72 x 0,24 - 0,72 x 0,24
Drive wheels (front / rear)		2 / 2
Steering wheels (front / rear)		2 / 0
Braking wheels (front / rear)		2 / 2
Engine/Battery		
Engine brand / model		Kubota - D1105-E4B - D1105-E4B
Engine norm		Interim Tier 4, Stage IIIA, Stage V
I.C. Engine power rating / Power (kW)		24.80 Hp / 18.50 kW
Miscellaneous		
Ground Pressure		15 daN/cm ²
Hydraulic Pressure		400 Bar
Hydraulic tank capacity		60 l
Fuel tank		53 l
Vibration on hands/arms		< 0.50 m/s ²
Daily consumption **		4.40 l
Standards compliance		
This machine is in compliance with:		ANSI A92.20-2018 CSA B354.6 ICES-002-Issue 6 Standard Canadian EMC

*Varies according to options and standards of the country to which the machine is delivered

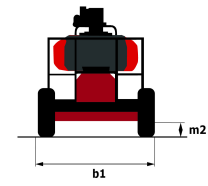
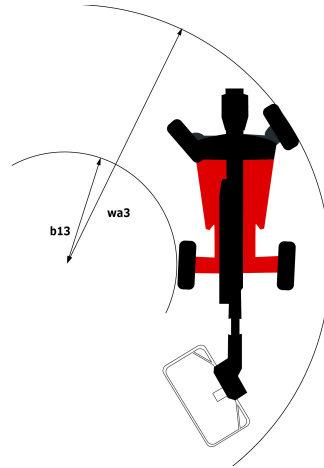
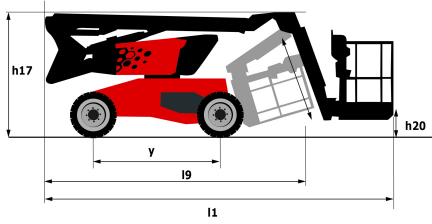
** According to "REDUCE cycle"

Load chart

Load Chart for AWP Metric



Dimensional drawing



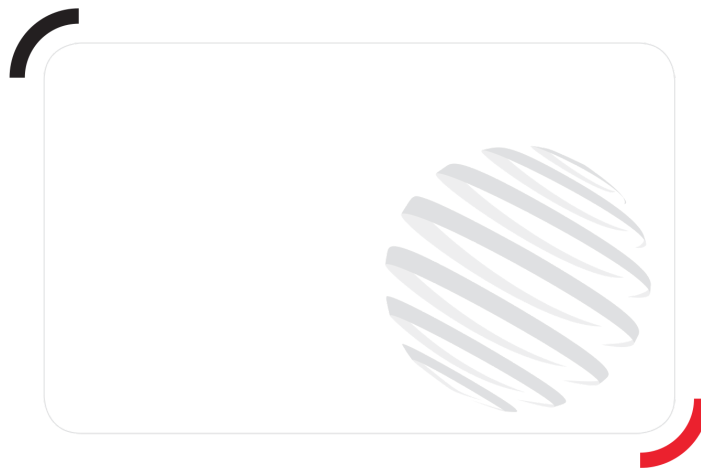
Equipment

Standard

110 V plug with differential circuit breaker
 3 Simultaneous movements
 Audible alarm and illuminated indicator lamp (leveling, overload, lowering)
 Basket 1,500 mm
 Battery cut-off
 CAN bus technology
 Dead man pedal
 Differential locking
 Easy Manager
 Emergency stop button in platform and on frame
 Fuel gauge with low level indicator
 Horn in the platform
 Hour meter
 Integrated diagnostic assistance
 Key lock on fuel tank
 Leveling unlocking
 Lift and drive
 Management via engine speed bearing
 Manual emergency lowering
 Pendular arm
 Proportional controls
 Protective cover for control panel
 Quick access to components
 Simplified lift control system
 Water heater

Optional

110 or 230V plug with differential circuit breaker
 Air predisposition
 Battery blanket
 Battery cut-off
 Beep on every movement
 Beep upon travel
 Biodegradable oil
 Extreme cold oil
 Fan grille
 Highly capacity battery
 Hydraulic oil heater
 Initial verification report before putting into service
 Lockable fuel cap
 Non-marking tyres
 On-board generator (3,7 kW)
 SMS : Safe Man System
 Screen protection on the lower box control
 Sieve for fuel tank
 Turret cover with key lock
 Water predisposition
 Working headlight in platform



Siège Social

430 rue de l'Aubinière - 44150 Ancenis Cedex - France

Tel: +33(0)2 40 09 10 11 - Fax: +33 (0)2 40 09 10 97

www.manitou.com



This brochure describes versions and configuration options for Manitou products which may be fitted with different equipment. The equipment described in this brochure may be standard, optional or not available depending on version. Manitou reserves the right to change the specifications shown and described at any time and without prior warning. The manufacturer is not liable for the specifications given. For more information, contact your Manitou dealer. Non-contractual document. Product descriptions may differ from actual products. List of specifications is not comprehensive. The logos and visual identity of the company are the property of Manitou and may not be used without authorisation. All rights reserved. The photos and diagrams contained in this brochure are provided for information only.

MANITOU BF SA - Limited company with board of directors - Share capital: 39,668,399 euros - 857 802 508 RCS Nantes