

Technical sheet :

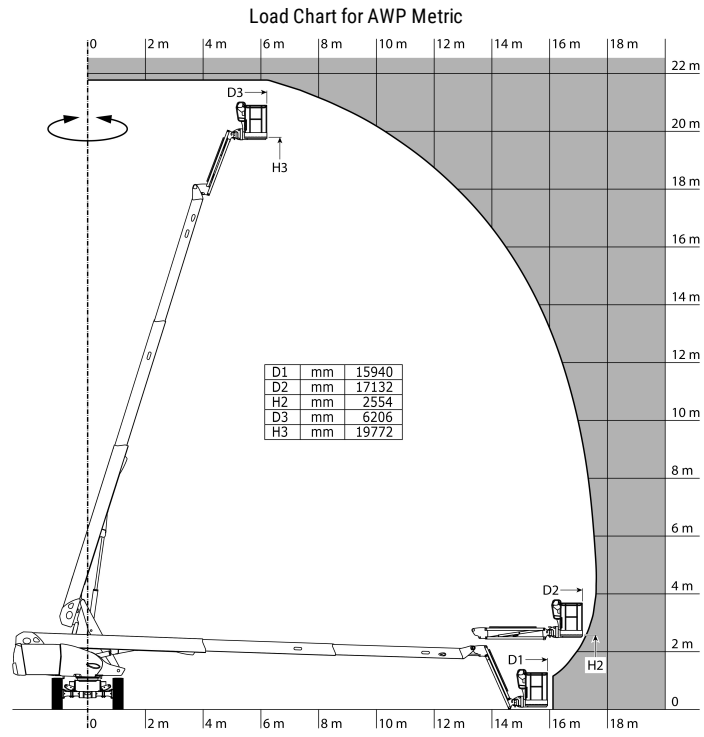
# **TJ 65**

---

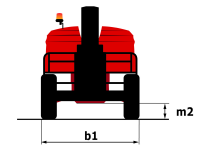
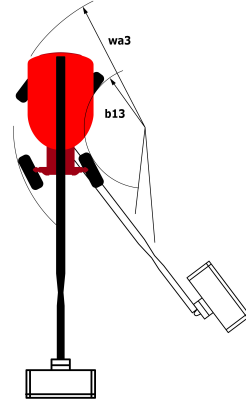
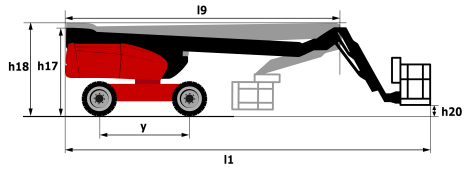


Capacities		Metric
Working height	h21	22 m
Platform height	h7	19.77 m
Max. outreach	r1	17.63 m
Pendular arm rotation (bottom)		+66 °
Turret rotation		360 °
Platform rotation (right / left)		90 ° / 90 °
Number of people (inside)		2
Weight and dimensions		
Platform weight*		11850 kg
Platform dimensions (length x width)	lp / ep	2.10 m x 0.80 m
Overall width	b1	2.48 m
Overall length	l1	9.80 m
Overall height	h17	2.47 m
Overall length (stowed)	l9	7.29 m
Overall height (stowed)	h18	2.72 m
Floor height (access)	h20	0.39 m
Jib length	l13	2 m
Counterweight offset (turret at 90°)	a7	1.35 m
Internal turning radius (over tyres)	b13	2.96 m
External turning radius	Wa3	6.19 m
Ground clearance at centre of wheelbase	m2	0.44 m
Wheelbase	y	2.80 m
Performances		
Drive speed - stowed		4.40 km/h
Drive speed - raised		1 km/h
Gradeability		40 %
Wheels		
Tyres type		Solid Tyres Cured-On
Drive wheels (front / rear)		2 / 2
Steering wheels (front / rear)		2 / 0
Braking wheels (front / rear)		0 / 2
Engine/Battery		
Engine brand / model		Kubota - D1803-CR-TIE4B
I.C. Engine power rating / Power (kW)		49.60 Hp / 37 kW
Miscellaneous		
Ground Pressure		18.20 daN/cm <sup>2</sup>
Hydraulic Pressure		340 Bar
Hydraulic tank capacity		94 l
Fuel tank		72 l
Vibration on hands/arms		< 0 m/s <sup>2</sup>
Standards compliance		
This machine is in compliance with:		ANSI A92.20-2018 CSA B354.6 ICES-002-Issue 6 Standard Canadian EMC

# Load chart



# Dimensional drawing



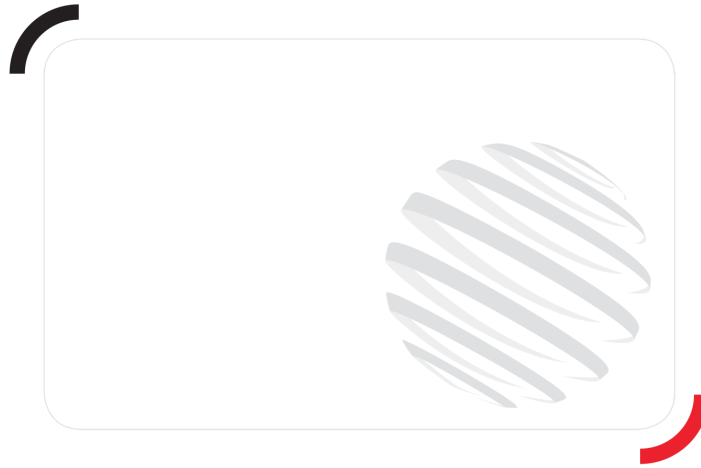
# Equipment

## Standard

4 simultaneous movements  
4 wheel drive  
Audible alarm and illuminated indicator lamp (leveling, overload, lowering)  
Backup electrical pump  
Continuous turret rotation  
Differential locking on rear axle  
Drive enable  
Easy Manager  
Electronic platform compensation  
Emergency stop button in platform and on frame  
Engine mounted on sliding platform  
Front axle with limited slip  
Fuel gauge with low level indicator  
Fully galvanized basket with demountable floor  
Hour meter  
Integrated diagnostic assistance  
Leveling unlocking  
Management via engine speed bearing  
Oscillating front axle  
Proportional controls

## Optional

110 V plug with differential circuit breaker  
Air predisposition  
Beep upon travel  
Biodegradable oil  
Coded anti-start  
Cold weather kit  
Key lock on fuel tank  
Non-marking tyres  
Onboard generator (5 kW)  
Remote control for transport  
SMS : Safe Man System  
Screen protection on the lower box control  
Water predisposition  
Welder ready package  
Working light



Siège Social

430 rue de l'Aubinière - 44150 Ancenis Cedex - France

Tel: +33(0)2 40 09 10 11 - Fax: +33 (0)2 40 09 10 97

[www.manitou.com](http://www.manitou.com)



This brochure describes versions and configuration options for Manitou products which may be fitted with different equipment. The equipment described in this brochure may be standard, optional or not available depending on version. Manitou reserves the right to change the specifications shown and described at any time and without prior warning. The manufacturer is not liable for the specifications given. For more information, contact your Manitou dealer. Non-contractual document. Product descriptions may differ from actual products. List of specifications is not comprehensive. The logos and visual identity of the company are the property of Manitou and may not be used without authorisation. All rights reserved. The photos and diagrams contained in this brochure are provided for information only.

MANITOU BF SA - Limited company with board of directors - Share capital: 39,668,399 euros - 857 802 508 RCS Nantes