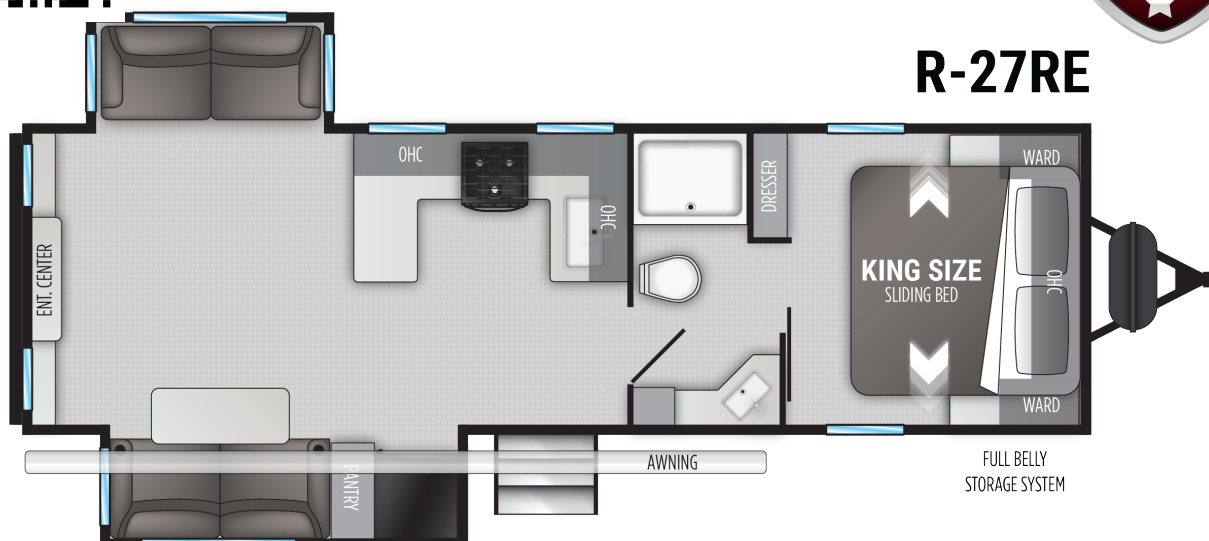




# RADIANCE



## R-27RE



### Top Selling Features

- Azdel Composite Laminated Walls
- Patent Pending Fully Belly Storage
- 6' 11" Barrel Roof
- Painted, Fully Molded, Fiberglass Cap
- 5-Sided Aluminum Construction
- Patent Pending King Slide System
- No Carpet throughout
- Black-Out Roller Shades in Living Area
- Plywood Flooring
- Seamless Countertops

### Radiance Ultra-Lite R-27RE

GWVR	9,592 Lbs
Dry Weight	6,792 Lbs
Hitch Weight	792 Lbs
Axles	2 x 4400
Fresh Tank	46 Gal
Black Tank	30 Gal
Water Heater	6 Gal
Furnace	30,000 BTU
Air Conditioner	14,500 BTU
Number of Slides	2
Bedroom Height	6'-10-1/2"
Awning Length	19'
Cook Top	3 Burner
Traditional Oven	Yes
Convection Oven	No
Generator Prep	N/A
Sleep Capacity	5-6 People



[www.cruiservv.com](http://www.cruiservv.com)

Cruiser RV, LLC  
7805 North SR 9 • Howe, IN 46746  
260-562-3500

\*Overall length defined as tow point (ball coupler for travel trailers / king pin for fifth wheel trailers) to rear bumper. It does not include rear ladder or spare tire. Optional pin boxes will affect overall length. \*\*Garage length is defined as ramp door to full interior wall. Standard or optional equipment may reduce overall garage dimensions. Information provided is accurate as of 3/3/2021 and is subject to update & change. Please confirm with your local Cruiser Dealership for up to date information.