

A Factual Report from Mercury Marine

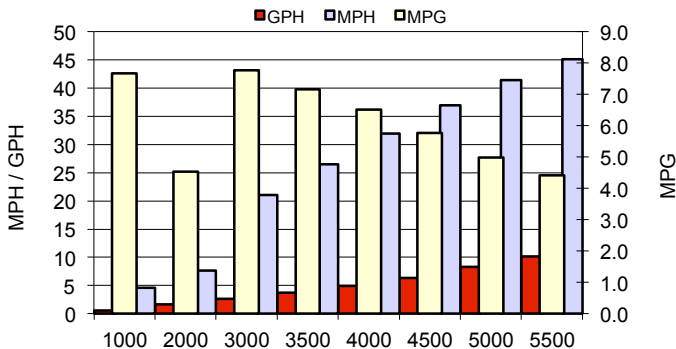
## TEST CONDITIONS

|                                      |            |
|--------------------------------------|------------|
| Test Date                            | 6/11/15    |
| Test Conductors                      | Tony Cody  |
| Boat Weight as Tested (pounds)       | 2366       |
| Air Temperature (degrees Fahrenheit) | 88         |
| Elevation (feet)                     | 220'       |
| Wind Velocity (MPH)                  | 3-5 mph    |
| Fresh/Salt Water                     | fresh      |
| Fuel Level at Testing (gallons)      | 10 gallons |

## PERFORMANCE SUMMARY

|                                   |              |
|-----------------------------------|--------------|
| Top Speed (MPH @ RPM)             | 48.6 @ 6000  |
| Acceleration 0 - 20 MPH (Seconds) | 3.94         |
| Acceleration 0 - 30 MPH (Seconds) | 6.78         |
| Best Fuel Efficiency (MPG @ MPH)  | 7.8 @ 21 MPH |

## PERFORMANCE CURVE



## PERFORMANCE DATA

| RPM          | SPEED | FUEL | FUEL |
|--------------|-------|------|------|
| RANGE        | MPH   | GPH  | MPG  |
| 1000         | 4.6   | 0.6  | 7.7  |
| 2000         | 7.7   | 1.7  | 4.5  |
| 3000         | 21    | 2.7  | 7.8  |
| 3500         | 26.5  | 3.7  | 7.2  |
| 4000         | 31.9  | 4.9  | 6.5  |
| 4500         | 36.9  | 6.4  | 5.8  |
| 5000         | 41.4  | 8.3  | 5.0  |
| 5500         | 45.1  | 10.2 | 4.4  |
| 6000         | 48.6  | 11.3 | 4.3  |
| Top RPM 6000 | 48.6  | 11.3 | 4.3  |

## ENGINE SPECIFICATIONS

|              |                  |
|--------------|------------------|
| Engine       | 115 EFI 4 stroke |
| Horsepower   | 115              |
| Cylinders    | 4 in line        |
| Gear Ratio   | 2.07             |
| Model Number | 115 EXLPT        |

## BOAT SPECIFICATIONS

### Stingray Boats

|                               |  |
|-------------------------------|--|
| Manufacturer                  | Stingray boats   |
| Website                       | <a href="http://www.stingrayboats.com">www.stingrayboats.com</a> |
| Boat Model                    | 191DC  |
| Bottom Style/Paint            | V no paint   |
| Material                      | Fiberglass   |
| Length                        | 19' 3"   |
| Beam                          | 7' 6"  |
| Transom Height (inches)       | 25"  |
| Transom Angle (degrees)       |  |
| Max HP Capacity               | 115hp  |
| Fuel Tank Capacity (gallons)  | 21   |
| Steering Type                 | Cable  |
| Dry Boat Weight (pounds)      | 2082   |
| Mounting Bolt Hole (outboard) | #2   |

## PROPELLER SPECIFICATIONS

|                                  |               |
|----------------------------------|---------------|
| Part Number (RightHand)          | 48 - 77346A45 |
| Part Number (Left Hand)          |               |
| Mercury Name                     | Black Max     |
| Material                         | Aluminum      |
| Diameter/Pitch                   | 13" X 19"     |
| Number of Blades                 | 3             |
| <b>M/C Bravo Three Propeller</b> |               |
| Part Number (Forward)            |               |
| Part Number (Rear)               |               |