

A Factual Report from Mercury Marine

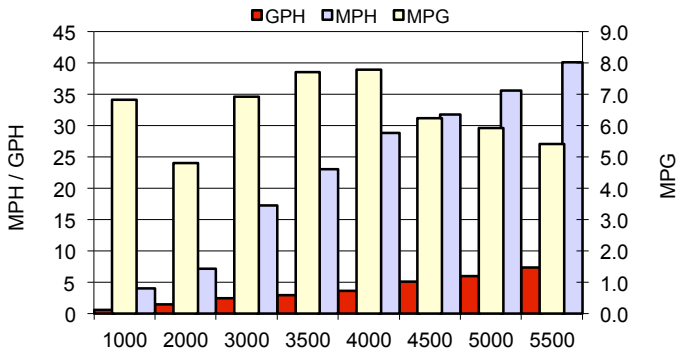
## TEST CONDITIONS

Test Date	5/28/15
Test Conductors	Tony Cody
Boat Weight as Tested (pounds)	2366
Air Temperature (degrees Fahrenheit)	81
Elevation (feet)	220'
Wind Velocity (MPH)	3-5 mph
Fresh/Salt Water	fresh
Fuel Level at Testing (gallons)	10 gallons

## PERFORMANCE SUMMARY

Top Speed (MPH @ RPM)	43.7 @ 6000
Acceleration 0 - 20 MPH (Seconds)	3.53
Acceleration 0 - 30 MPH (Seconds)	5.82
Best Fuel Efficiency (MPG @ MPH)	7.8 @ 28.8MPH

## PERFORMANCE CURVE



## PERFORMANCE DATA

RPM	SPEED	FUEL	FUEL
RANGE	MPH	GPH	MPG
1000	4.1	0.6	6.8
2000	7.2	1.5	4.8
3000	17.3	2.5	6.9
3500	23.1	3	7.7
4000	28.8	3.7	7.8
4500	31.8	5.1	6.2
5000	35.6	6	5.9
5500	40.1	7.4	5.4
6000	43.7	8.4	5.2
Top RPM 6000	43.7	8.4	5.2

## ENGINE SPECIFICATIONS

Engine	90EFI 4 stroke
Horsepower	90
Cylinders	4 in line
Gear Ratio	2.38 CT
Model Number	90 EXLPT

## BOAT SPECIFICATIONS

### Stingray Boats

Manufacturer	Stingray boats
Website	<a href="http://www.stingrayboats.com">www.stingrayboats.com</a>
Boat Model	191DC
Bottom Style/Paint	V no paint
Material	Fiberglass
Length	19' 3"
Beam	7' 6"
Transom Height (inches)	25"
Transom Angle (degrees)	
Max HP Capacity	115hp
Fuel Tank Capacity (gallons)	21
Steering Type	Cable
Dry Boat Weight (pounds)	2082
Mounting Bolt Hole (outboard)	#3

## PROPELLER SPECIFICATIONS

Part Number (RightHand)	48 - 832830A45
Part Number (Left Hand)	
Mercury Name	Black Max
Material	Aluminum
Diameter/Pitch	14.5" X 19"
Number of Blades	3
<b>M/C Bravo Three Propeller</b>	
Part Number (Forward)	
Part Number (Rear)	