

BIG ARM



DIG FASTER

STAY INSIDE THE CAB

HLA
ATTACHMENTS

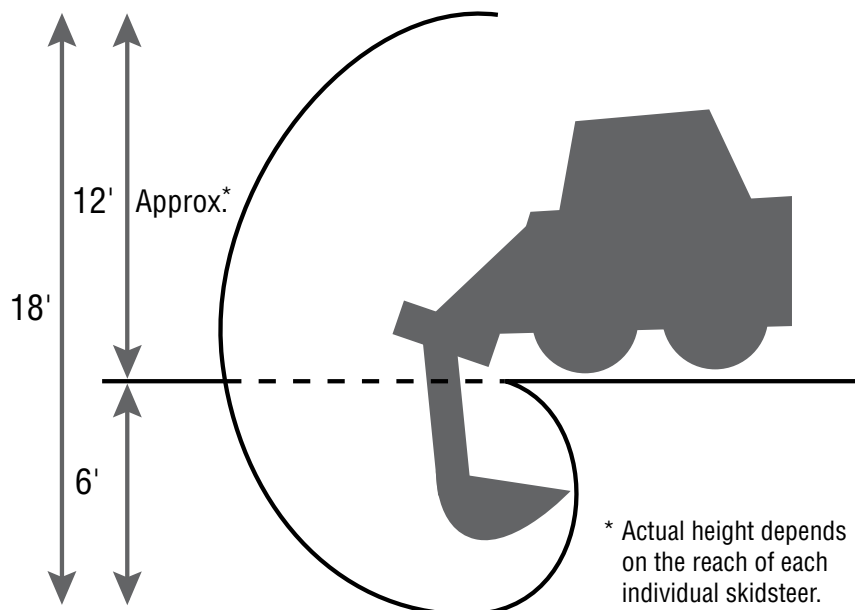


Dig deeper and faster.

HLA's Big Arm gives you the power to dig deeper, reach higher and reposition easily – without getting out of the cab. The Big Arm digs down 6 feet, making it ideal for most landscaping or light construction applications. Reaching up approx. 12' high*, also makes it simple to empty your bucket into a nearby wagon or truck. The hydraulic boom swings a full 140° allowing the operator to pick up or dump material on either side of the pit. For skidsteer owners, this means versatility like never before.

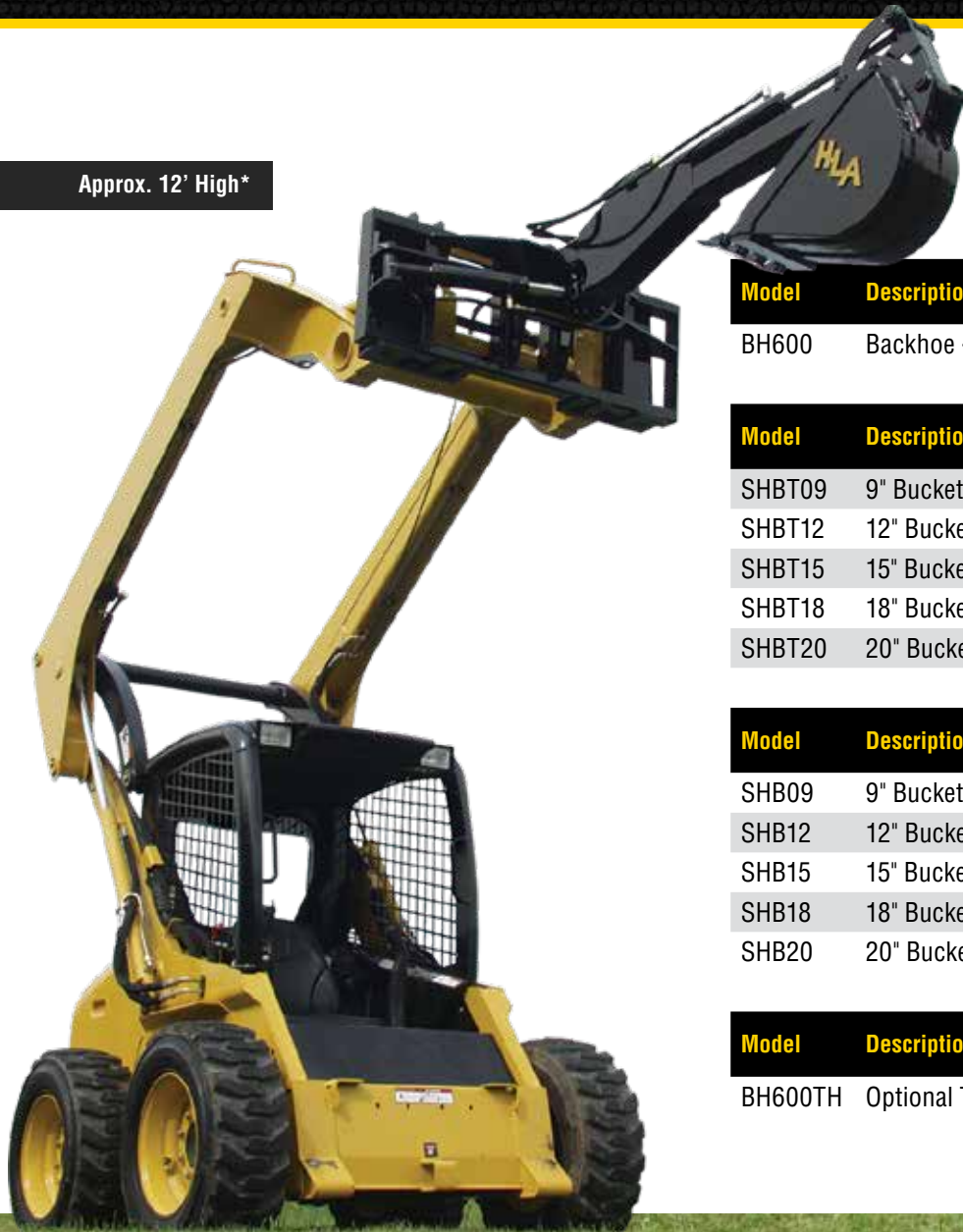
- Avoids the need for side stabilizers
- Grease fittings on all pivot points
- Brass bushings on key wear points
- Hydraulics are directly connected to the controls inside the skidsteer

Add a new level of versatility to your skidsteer with the powerful HLA Big Arm and you'll never have to leave your cab again. For more information and purchase details contact your authorized HLA dealer.





Approx. 12' High*



Model	Description	Weight
BH600	Backhoe - Less Bucket	595 lbs

Model	Description	Weight
SHBT09	9" Bucket for Big Arm Backhoe c/w 3 Teeth	71 lbs
SHBT12	12" Bucket for Big Arm Backhoe c/w 3 Teeth	75 lbs
SHBT15	15" Bucket for Big Arm Backhoe c/w 4 Teeth	81 lbs
SHBT18	18" Bucket for Big Arm Backhoe c/w 4 Teeth	85 lbs
SHBT20	20" Bucket for Big Arm Backhoe c/w 4 Teeth	87 lbs

Model	Description	Weight
SHB09	9" Bucket for Big Arm Backhoe Less Teeth	63 lbs
SHB12	12" Bucket for Big Arm Backhoe Less Teeth	67 lbs
SHB15	15" Bucket for Big Arm Backhoe Less Teeth	71 lbs
SHB18	18" Bucket for Big Arm Backhoe Less Teeth	74 lbs
SHB20	20" Bucket for Big Arm Backhoe Less Teeth	77 lbs

Model	Description	Weight
BH600TH	Optional Thumb For Big Arm Backhoe	78 lbs

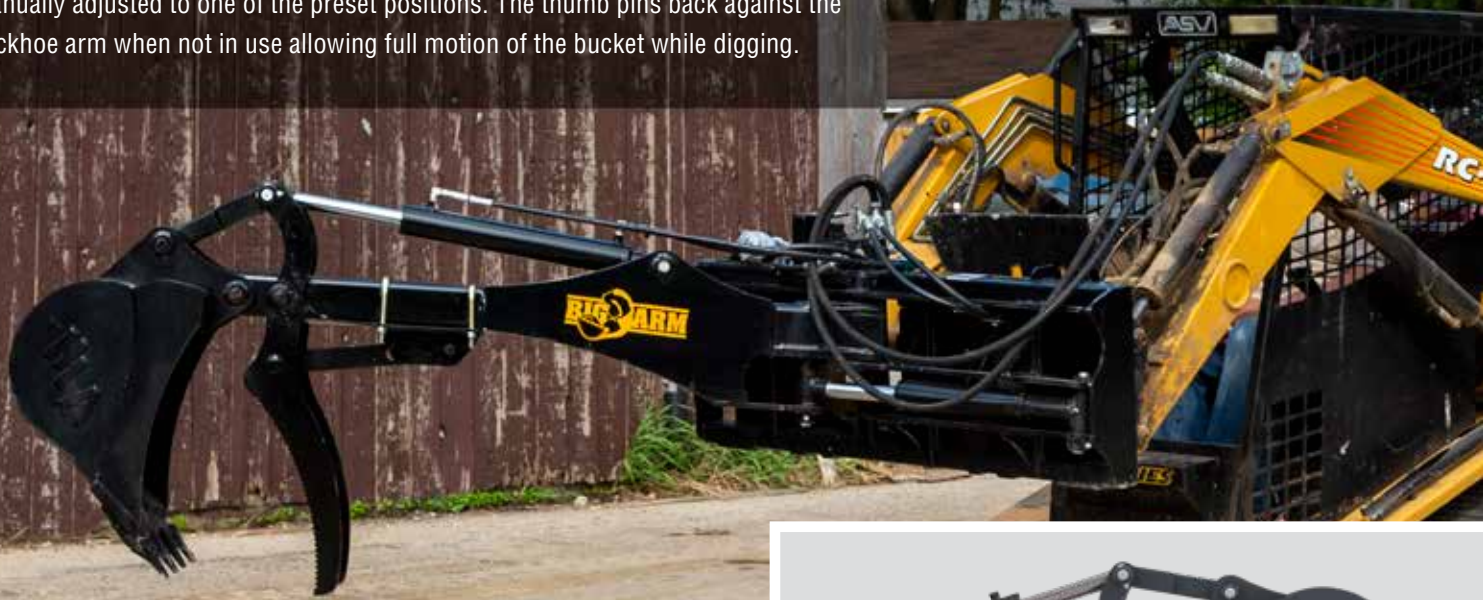
140° Range





Job Done Right.

Optional Bolt on Thumb

The bolt on thumb is ideal for operators looking to get the most out of their Big Arm. Ideal for handling materials that are too large for the bucket, the thumb can be manually adjusted to one of the preset positions. The thumb pins back against the backhoe arm when not in use allowing full motion of the bucket while digging.



Adjustable Presets

The optional thumb has 3 working positions  plus a park position  for increased versatility in various tasks.



8082 Road 129, R.R. #3
Listowel, ON, Canada N4W 3G8
Tel. (519) 291-4162 | Toll Free (866) 567-4162
Fax (519) 291-5388 | sales@horstwelding.com

www.horstwelding.com

Authorized Dealer