



2025 ADVENTURE

# EXPLORER PRO® 170/230

The ultimate companion for any adventure.

## WHAT'S NEW

- Hydraulic steering damper

## KEY FEATURES

- Rotax® 1630 ACE™ – 170/230
- ST3™ Hull
- Tech Package: BRP Audio – Premium System, full color 7.8" wide display and USB port
- iDF – Intelligent Debris-Free Pump System
- Garmin® 7" touchscreen GPS
- Touring windshield
- Heavy duty grab handles
- Handlebar with adjustable riser
- Explorer touring seat and knee pads
- Gunwale footrests
- LinQ® Multi Cargo Rack
- LinQ Explorer Bag



● Iceland Grey

## CAPACITY

Rider Capacity	3
Weight Capacity	600 lb/272 kg
Rear Platform Capacity (without passenger)	221 lb/100 kg
Fuel Capacity	18.5 US gal/70 L
Glove Box	0.8 US gal/2.9 L
Front Bin	25.3 US gal/96 L
LinQ Explorer Bag	26.4 US gal/100 L
Storage Capacity – Total	52.3 US gal/198.9 L*

## DIMENSIONS

Length (bumper to bumper)	146.8"/373.4 cm
Width	49.6"/126 cm
Height	55.5"/140 cm

## HULL

Type	ST3 Hull
Material	Fiberglass

## OTHER FEATURES

- Seat strap
- iBR – Intelligent Brake & Reverse
- VTS™ (Variable Trim System)
- Boarding ladder
- RF D.E.S.S.™ key
- Direct-access front storage
- Watertight phone compartment
- LinQ attachment system
- Wide-angle mirrors
- Handle grips with palm rest
- Footwell carpets
- Large swim platform
- 1 LinQ front support
- Cup holder
- Tilt steering
- Ski tow eye

## ROTAX ENGINE

	1630 ACE – 170	1630 ACE – 230
Horsepower	170 hp	230 hp
Intake System	Naturally aspirated	Supercharged with external intercooler
Displacement	1,630 cc	
Cooling	Closed-Loop Cooling System (CLCS)	
Reverse System	Electronic iBR***	
Fuel Type	87 octane	
Throttle System	iTC™ (Intelligent Throttle Control)	
Exhaust System	D-Sea-Bel™ system	

## GAUGE

Type of Gauge	Large panoramic 7.8" wide LCD display	
Main Functions	• BRP Connect	• VTS
	• Music	• Fuel consumption
iTC System – Mode	• Navigation	• Fuel autonomy
	• Bluetooth† connectivity	• Vehicle hours
	• Speedometer	
iTC System – Mode	• RPM	
	• Sport mode	• Speed regulator
	• ECO® mode	• Accessory mode
	• Slow mode	

## WEIGHT

Dry Weight	880 lb/399 kg	917 lb/416 kg
------------	---------------	---------------

## WARRANTY

BRP limited warranty covers the watercraft for one year.

\* Total storage capacity includes LinQ Explorer bag.  
 \*\*Electronic brake, neutral and reverse.



## FEATURE HIGHLIGHTS



### Touring Windshield

An industry-first that reduces fatigue and noise associated with prolonged wind pressure while also protecting against splashing and salt water exposure when riding offshore.



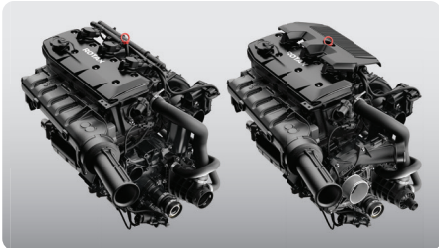
### Extended Riding Comfort

With extended riding duration in mind, the Explorer Touring seat and knee pads, adjustable riser handlebars and gunwale footrests provide ultimate extended riding comfort.



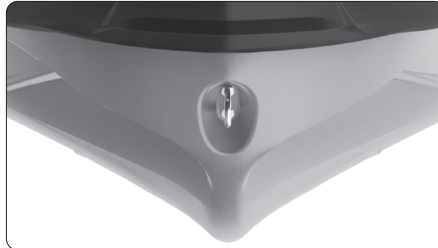
### LinQ Explorer Bag

Keep extra gear dry and easily accessible with this 100 L (26.4 gallon) bag. This exclusive LinQ compatible accessory is waterproof, functional and portable. It can be stacked on the LinQ plate/LinQ accessories or carried as a backpack.



### Rotax 1630 ACE – 170/230 Engines

Two engine options: the 170 hp boasts naturally aspirated punch with optimal fuel economy, or opt for the 230 hp engine with a supercharger and external intercooler, optimized to run on regular fuel.



### ST3 Hull

An innovative hull that sets the benchmark for rough water handling, stability, and offshore performance.



### Rear Deck Extension with LinQ Attachment System and Multi Cargo Rack

The rear deck extension adds 11.5 inches to the back of the watercraft to increase stability, space, and storage capability. Enhance your storage capacity with the LinQ Multi Cargo Rack.