



5005 Nathan Lane N.
Plymouth, MN 55442
763-398-2690
info@cfmotousa.com
cfmotousa.com



2024

OFF-ROAD VEHICLES



Copyright 2024 Zhejiang CFMOTO Power Co., Ltd. All rights reserved. CFMOTO®, CFORCE®, UFORCE®, ZFORCE® and CFMOTO CF logo are trademarks of Zhejiang CFMOTO Power Co., Ltd. BOSCH® is a registered trademark of Robert Bosch GmbH. Delphi® is a registered trademark of Delphi Automotive PLC. CVTech® is a registered trademark of CVTech-AAB. All ZFORCE, CFORCE and UFORCE models feature a standard 12-month Limited Warranty. WARNING: CFMOTO recreational vehicles are intended for off-road use only and can be hazardous to operate. Read Owner's Manual and all product labels before operating. Never operate on paved roads. Operators and passengers must wear a helmet, eye protection and protective clothing. Operators must be at least 16 years old with a valid driver's license. Passengers, if permitted, must be at least 12 years old. Always use seat belts, cab netting and doors (if equipped). Never operate under the influence of alcohol or drugs. Avoid excessive speed and sharp turns, and never engage in stunt driving. Check state and local laws before operating on trails. Take a safety training course before operating. Contact your CFMOTO dealer for more information, call the ATV Safety Institute at 1-800-887-2887, or go to www.atvsafety.org. ©2024 Zhejiang CFMOTO Power Co., Ltd.

Creating a winning formula for building great recreation and utility vehicles centers around the experience. At CFMOTO, we take a "more is better" approach. More quality. More features. More performance. More support. More fun. More friendly. And, of course, more trail-blazing value for your buck. As you'll see on the following pages, once you Experience More, it becomes clear everyone else delivers less.

experience more



ZFORCE pg 6



UFORCE pg 12



CFORCE pg 18

Overbuilt and underpriced beyond expectations.

Standard Features

- ① Hardtop Roof
- ② TFT Display
- ③ Electronic Power Steering
- ④ Automotive-Style Paint
- ⑤ LED Headlights
- ⑥ Steel Bumpers
- ⑦ Powerful Winch
- ⑧ Aluminum Rims
- ⑨ Protective Side Doors



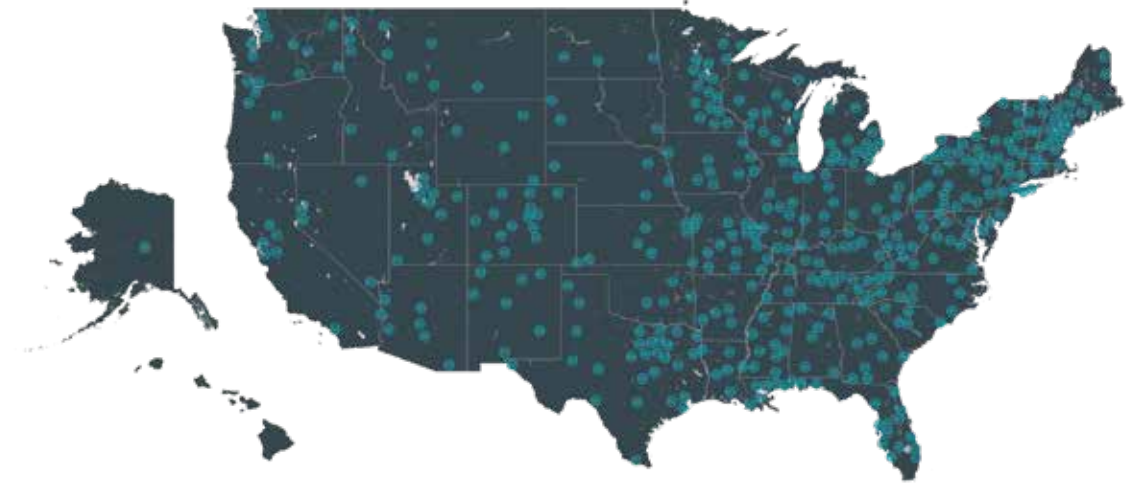
Climbing to the top takes rethinking everything: manufacturing facilities, supply chains, distribution channels, everything. When you buy a CFMOTO, you get excellent quality and reliability, plus a mountain of standard features you don't pay extra for. From the backcountry to the back forty, these machines, along with the support of over 600 dealers, continue to win over farmers, ranchers, hunters, fishermen, and adventure seekers across the country.



Climbing to the top.



We began our climb way back in 1989 manufacturing engines for many of the world's leading powersports brands. We always gave our customers what they asked for. And in return they gave us inspiration to deliver more. So we did. These 2024 UTVs, side-by-sides, and ATVs represent more of what riders want today—very capable, fully loaded machines, at a bargain price. We're climbing to the top because we always believed we could build great products far more efficiently and back them up with an excellent ownership experience. Take a closer look and you'll believe it too.



ZFORCE
PERFORMANCE SIDE-BY-SIDES



*Live ruggedly.
Go swiftly. Defy gravity.*

Here's how to stretch your suspension without stretching the budget. Take your pick of five adventure-ready machines. Including the all-new 950 Sport 4. The 950 H.O. EX, the showstopper, thrills with its high output 963cc engine, beadlock rims, large tires, and a 64" wide stance. The multi-purpose 950 Sport, at 60" wide, gets you to and through everything, come hill or highwater. And rounding out the whoops on those restricted trails, there's the 50" wide 950 Trail and 800 Trail, your backstage pass to a whole other wilderness.

Standard Features



Quadlink™ Rear Suspension

These ground-smoothing adjustable gas shocks and multi-link trailing arms work together to tackle any terrain, whether it's whoops, ruts, or dunes. And with the adjustable toe-in/toe-out feature, you can customize your ride to your liking. (950 H.O. EX)



Aluminum Alloy Wheels and Hard-Wearing Tires

Handle anything and look great doing it. Beadlock rims featured on the Sport 4 and H.O. EX models are the toughest wheels for conquering the gnarliest ground.

Hardtop Roof

Protects you from all kinds of weather while you're tearing it up out there.

Seating for 4

With the new Sport 4, you can bring the whole family or three buddies, your choice.



Ridevision™ LED Headlights

These are 80% brighter than halogen lights. The difference is night and day.

3500 lb. Winch

When it comes to getting out of a tight spot, the 3500 lb. winch is a must have. Synthetic rope is lighter, easier to handle, and stronger than cable.

60-64" Sport Stance

You'll stand out with that 64" (950 H.O. EX) and 60" (950 Sport and 950 Sport 4) stance. Aggressive and confident, you'll be turning heads and dropping jaws wherever you go.

Standard Features

Hardtop Roof

We put a roof over your head at no extra charge. Hard to argue with extra protection.

Protective Full Side Doors

We redesigned these last year and riders are digging the extra protection.

Aluminum Alloy Wheels

Lightweight aluminum wheels look great when they're getting dirty. Durable performance tires get a grip on all the action.

50" Trail Stance

You'll enjoy having more riding options near and far, thanks to the narrower stance which gives you access to all those 50" restricted trails.

TTA Rear Suspension

The Torsional Trailing Arm (TTA) creates an even tighter grip on the trail. The ingenious design delivers more controlled wheel movement.

G2 Chassis

Redesigned last year, this chassis turns heads every time you round a corner.

3500 lb. Winch

Your jam is getting out of jams. A 3500 lb. winch comes standard on all ZFORCE Trail models.

Electronic Power Steering

The variable-assist EPS gives you optimal steering feedback in all conditions. The 950 Sport even features dual-mode EPS, automatically syncing with the vehicle's power mode, giving you more confidence in the rough stuff.



Pulse™ Digital Display

Displays all your engine vitals and even includes a Bluetooth call indicator. (950 H.O. EX)



eco mode



sport mode



Ride Modes

When you want to take your ride to the next level, switch to sport mode and feel the power.

Protective Side Doors

The 950 Sport and Sport 4 come with full side doors that will keep you safe and sound. The 950 H.O. EX gets half doors.

Adjustable Gas Shocks

Front and rear adjustable gas shocks come standard on the 950 Trail.

Electronic Power Steering

Variable-assist electronic power steering (EPS) adapts to the vehicle's speed, giving you more confidence to get on the pedal.

LCD Display

The easy-to-read display lets you quickly monitor twelve engine vitals at a glance. Now that's what you call being connected to your machine.

Ride Modes

Take your ride to the next level. Engage sport mode and let her rip.



ZFORCE 800 TRAIL



ZFORCE 950 TRAIL



ZFORCE 950 SPORT

Shown with optional accessories.



ZFORCE 950 SPORT 4



ZFORCE 950 H.O. EX

Shown with optional accessories.



ZFORCE 800 Trail



ZFORCE 950 Trail



ZFORCE 950 Sport



ZFORCE 950 Sport 4



ZFORCE 950 H.O. EX

Engine Type	V-Twin, liquid cooled, 4-stroke, SOHC, 8-valve	V-Twin, liquid cooled, 4-stroke, SOHC, 8-valve	V-Twin, liquid cooled, 4-stroke, SOHC, 8-valve	V-Twin, liquid cooled, 4-stroke, SOHC, 8-valve	V-Twin, liquid cooled, 4-stroke, SOHC, 8-valve
Displacement	800cc	963cc	963cc	963cc	963cc
Horsepower	59.6 HP @ 7500 RPM	85 HP @ 7500 RPM	85 HP @ 7500 RPM	85 HP @ 7500 RPM	90 HP @ 7500 RPM
Fuel System	Bosch® EFI	Bosch® EFI	Bosch® EFI	Bosch® EFI	Bosch® EFI
Transmission	CVTech Automatic P/R/N/H/L	CVTech Automatic P/R/N/H/L	CVTech Automatic P/R/N/H/L	CVTech Automatic P/R/N/H/L	CVTech Automatic L/H/N/R/P
Drive	2WD/4WD/4WD lock	2WD/4WD/4WD lock	2WD/4WD/4WD lock	2WD/4WD/4WD lock	2WD/4WD/4WD lock
L x W x H	120.7" x 50" x 71.7"	120.7" x 50" x 71.7"	120.7" x 60" x 73.6"	150.7" x 60" x 74"	118.9" x 64" x 72.8"
Wheel Base	90"	90"	90"	120"	90"
Ground Clearance	10"	10"	12"	12"	13.4"
Wheel Travel	Front/Rear: 10"/12"	Front/Rear: 10"/12"	Front/Rear: 12.1"/13.1"	Front/Rear: 12.1"/13.1"	Front/Rear: 13.4"/15.6"
Curb Weight	1411 lbs.	1422 lbs.	1488 lbs.	1753 lbs.	1554 lbs.
Braking	Front/Rear: Hydraulic disc	Front/Rear: Hydraulic disc	Front/Rear: Hydraulic disc	Front/Rear: Hydraulic disc	Front/Rear: Hydraulic disc
Suspension	Front: Independent arched dual A-arm Rear: TTA Suspension (Dual A-arm & connection rod)	Front: Independent arched dual A-arm Rear: TTA Suspension (Dual A-arm & connection rod)	Front: Independent arched dual A-arm Rear: TTA Suspension (Dual A-arm & connection rod)	Front: Independent arched dual A-arm Rear: TTA Suspension (Dual A-arm & connection rod)	Front: Double A-arm independent Rear: Quadlink™ trailing arm independent
Shocks	Front/Rear: Oil damped with pre-load adjustable	Front/Rear: Piggyback high pressure gas with 3-position compression adjustable	Front/Rear: Piggyback high pressure gas with 3-position compression adjustable	Front/Rear: Piggyback high pressure gas with 3-position compression adjustable	Front/Rear: Piggyback high pressure gas with 7-position both rebound/compression adjustable
Wheels	14" Cast aluminum alloy	14" Cast aluminum alloy	14" Cast aluminum alloy	14" Cast aluminum alloy with beadlocks	14" Cast aluminum alloy with beadlocks
Tires	Front: 26" x 8" x R14 Rear: 26" x 9" x R14	Front: 26" x 8" x R14 Rear: 26" x 9" x R14	Front: 27" x 9" x R14 CST Stag Rear: 27" x 11" x R14 CST Stag	Front: 27" x 9" x R14 CST Stag Rear: 27" x 11" x R14 CST Stag	Front: 29" x 9" x R14 CST Rear: 29" x 11" x R14 CST
Additional Features	Electronic power steering, 3500 lb. winch, electronic throttle with normal/sport modes, LCD display, CFMoto ride app compatible, 12V outlet, USB port, LED headlights/taillights with backup lights, roof, fender flares, tilt steering, adjustable driver seat, full doors, 2" receiver	Electronic power steering, 3500 lb. winch, electronic throttle with normal/sport modes, LCD display, CFMoto ride app compatible, 12V outlet, USB port, LED headlights/taillights with backup lights, roof, fender flares, tilt steering, adjustable driver seat, full doors, 2" receiver	Electronic power steering, 3500 lb. winch with synthetic rope, electronic throttle with normal/sport modes, LCD display, CFMoto ride app compatible, 12V outlet, USB port, LED headlights/taillights with backup lights, roof, fender flares, tilt steering, adjustable driver seat, full doors, rear cargo box cover, 2" receiver	Electronic power steering, 4500 lb. winch with synthetic rope, electronic throttle with normal/sport modes, LCD display, CFMoto ride app compatible, 12V outlet, USB port, LED headlights/taillights with backup lights, roof, fender flares, tilt steering, adjustable driver seat, full doors, rear cargo box cover, 2" receiver	Electronic power steering, 3500 lb. winch with synthetic rope, electronic throttle with normal/sport modes, Pulse™ TFT display, CFMoto ride app compatible, 12V outlet, USB port, Ridevision™ LED headlights/taillights, roof, rear fender flares, tilt steering, adjustable driver seat, half doors, 9.6 gal. fuel tank, 2" receiver
Colors	Tundra Grey, Magma Red	Nebula Black, Lava Orange, Magma Red	Nebula Black, Tundra Grey, Magma Red	Nebula Black, Desert Tan, Lava Orange	Nebula Black, Lava Orange, Desert Tan

ZFORCE SPECIFICATIONS



UTILITY SIDE-BY-SIDES

CFMOTO

*You don't live on this land,
you live with this land.*

The world you thrive in is unpredictable and uncontrollable. That's why your UTV has to be the exact opposite. CFMOTO fills a gaping hole in the market with three UTVs. Each boasting excellent quality, tons of standard features, and a very low price. As you'll see, they're such a good deal, farmers and ranchers like to buy them by the herd. The fact that they come loaded to the roll bars with extra features at no extra cost makes adding a few to your fleet a no brainer.



1000-lb. Capacity Tilting Cargo Box

Easily unload whatever you're hauling with the nitrogen gas-assisted dump box. Handy tie-downs keep your load secure.



Side Nets

Keep brush and debris out of the cab. Standard on all UFORCE models.

Aluminum Alloy Wheels with 27" CST Performance Tires

Lightweight aluminum machined-polished rims wrapped with hardwearing CST performance tires defy the laws of traction.

Hardtop Roof

Rain or bright sunshine, you're protected by the hardtop roof, standard equipment on all UFORCE models.

Standard Features

3-Person Bench Seat (6-Person Capacity on 1000 XL)

The center console features two cup holders. Fold it up to create a front bench seat with room for three adults. When it's all-hands-on-deck, the 1000 XL has two bench seats, increasing capacity to six.

Projector Beam Headlights with LED Accents

See what's ahead of you with the bright white LED projector headlights accented with stylish LED strips.

Powerful Winch

Get out of any sticky situation with the 3500 lb. winch on the 1000 model or the 4500 lb. winch on the 1000 XL. The synthetic rope is stronger, lighter, and easier to handle.

Standard Features



600-lb. Capacity Dumping Cargo Box

In addition to its large capacity, the cargo box is equipped with a nitrogen gas-assisted dump box, which makes it easy to unload cargo quickly and efficiently.

Backup Lights and LED Taillights

Get a better view of what's behind you in low-light conditions with these lights.

Aluminum Alloy Wheels

Adds a touch of sophistication to your UTV, while the lightweight construction ensures nimble and agile handling.

Hardtop Roof

Don't let the elements wear you down or slow you down.

Side Nets

Keep branches, rocks, and other objects out of the cab.



Ridevision™ LED Headlights

Brighter and more durable than halogen, LED lighting offers unmatched visibility and safety at night or in lowlight conditions. It's also less prone to damage from shock, vibration, and temperature changes.



3500 lb. Winch

Pulling heavy objects, clearing debris from the trail, or even helping out other riders in need makes this winch an indispensable tool.



Removable Storage Box

The pull-out toolbox under the seat is for gear you don't go anywhere without.



Pulse Digital Display

Stay informed with the TFT (thin film technology) color display that shows several engine vitals and comes with a Bluetooth call indicator.

Electronic Power Steering

Variable-assist electronic power steering provides ideal feedback in all conditions. The tilt steering wheel enhances your driving position.



Electronic Power Steering with Tilt Wheel

Variable-assist power steering automatically adjusts the amount of steering assistance based on riding conditions for greater stability at higher speeds and greater maneuverability at lower speeds.

LCD Display

With the opportunity to monitor 12 engine vitals, you're always informed and aware of your UTV's status.

2-Person Bench Seat with Under-Seat Storage

A supportive seat keeps you secure and stable while minimizing pressure and impact on your back, reducing soreness and discomfort.





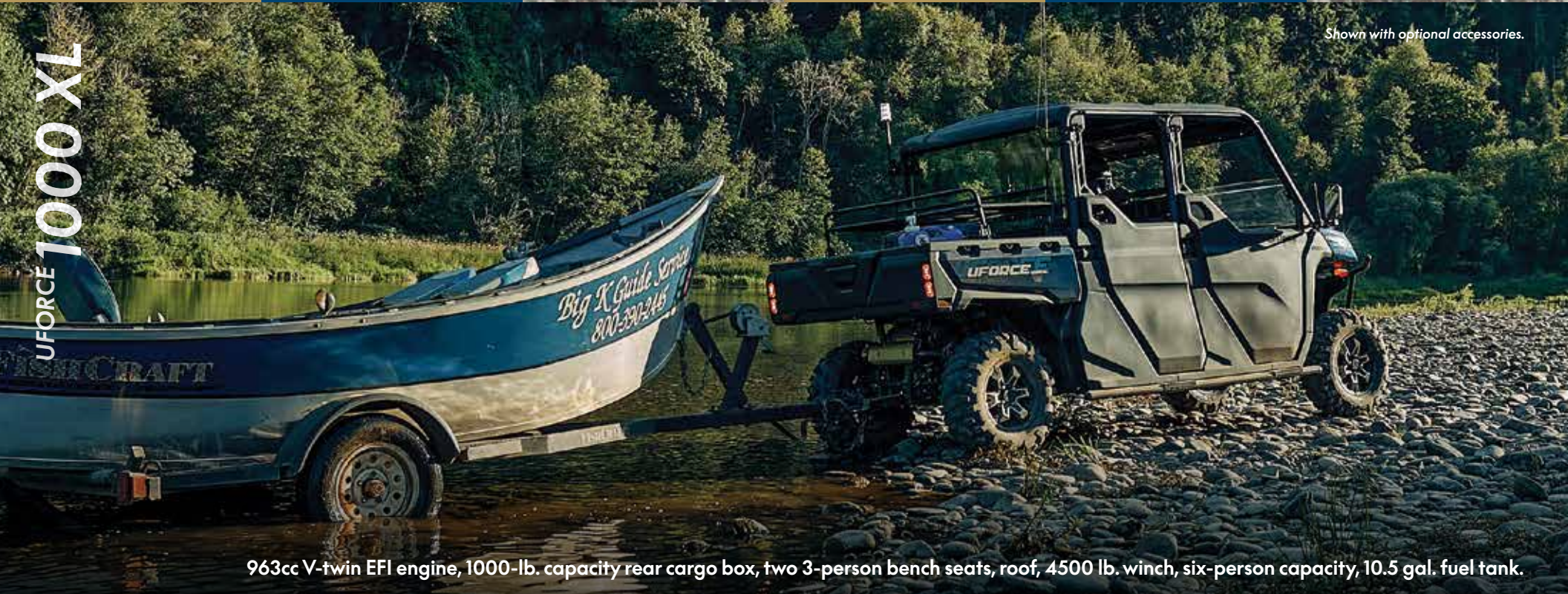
UFORCE 600

580cc single cylinder EFI, 600-lb. capacity rear cargo box, 2-person bench seat, roof, 3500 lb. winch, 9.25 gal. fuel tank.



UFORCE 1000

963cc V-twin EFI engine, 1000-lb. capacity rear cargo box, 3-person bench seat, roof, 3500 lb. winch, 10.5 gal. fuel tank.



UFORCE 1000 XL

Shown with optional accessories.

963cc V-twin EFI engine, 1000-lb. capacity rear cargo box, two 3-person bench seats, roof, 4500 lb. winch, six-person capacity, 10.5 gal. fuel tank.



UFORCE 600

Engine Type	Single cylinder, liquid cooled, 4-stroke, SOHC, 4-valve
Displacement	580cc
Horsepower	36 HP @ 6250 RPM
Fuel System	Bosch® EFI
Transmission	CVTech Automatic P/R/N/H/L
Drive	2WD/4WD/4WD lock
L x W x H	111" x 57.9" x 76.8"
Wheel Base	76.8"
Ground Clearance	10.6"
Wheel Travel	Front/Rear: 7.9"/8.3"
Curb Weight	1356 lbs.
Rear Cargo Capacity	600 lbs.
Braking	Front/Rear: Hydraulic disc with parking brake
Suspension	Front: High clearance gull wing A-arm independent Rear: Double A-arm independent
Shocks	Front/Rear: Spring pre-load adjustable, oil damped
Wheels	12" Cast aluminum alloy
Tires	Front: 26" x 8" x R12 Rear: 26" x 10" x R12
Additional Features	Electronic power steering, Bosch® electronic throttle with work/normal modes, 3500 lb. winch, 2-person bench seat, LCD display, CFMoto ride app compatible, 12V outlet, USB port, mirrors, side nets, Ridevision™ LED headlights/taillights with backup lights, tilt steering, roof, locking rear differential, large 9.25 gal. fuel tank, 2" receiver, adjustable driver's seat, under-seat storage area
Colors	Desert Tan, Twilight Blue, TT Camo



UFORCE 1000

Engine Type	V-Twin, liquid cooled, 4-stroke, SOHC, 8-valve
Displacement	963cc
Horsepower	71 HP @ 7000 RPM
Fuel System	Bosch® EFI
Transmission	CVTech Automatic L/H/N/R/P
Drive	2WD/4WD/4WD lock
L x W x H	115.9" x 63.6" x 78"
Wheel Base	80.7"
Ground Clearance	11"
Wheel Travel	Front/Rear: 9.1"/9.1"
Curb Weight	1521 lbs.
Rear Cargo Capacity	1000 lbs.
Braking	Front/Rear: Hydraulic disc with parking brake
Suspension	Front: High clearance gull wing A-arm independent Rear: Double A-arm independent
Shocks	Front/Rear: Spring pre-load adjustable, oil damped
Wheels	14" Cast aluminum alloy
Tires	Front: 27" x 9" x R14 CST Rear: 27" x 11" x R14 CST
Additional Features	Electronic power steering, Bosch® electronic throttle with work/normal modes, 3500 lb. winch with synthetic rope, 3-person bench seat, TFT display, CFMoto ride app compatible, 12V outlet, USB port, mirrors, side nets, LED headlights/taillights with back up lights, tilt steering, roof, locking rear differential, large 10.5 gal. fuel tank, 2" receiver, adjustable driver's seat, removable storage box
Colors	Desert Tan, Twilight Blue, TT Camo



UFORCE 1000 XL

Engine Type	V-Twin, liquid cooled, 4-stroke, SOHC, 8-valve
Displacement	963cc
Horsepower	71 HP @ 7000 RPM
Fuel System	Bosch® EFI
Transmission	CVTech Automatic L/H/N/R/P
Drive	2WD/4WD/4WD lock
L x W x H	148.4" x 63.6" x 78"
Wheel Base	112.2"
Ground Clearance	11"
Wheel Travel	Front/Rear: 9.1"/9.1"
Curb Weight	1918 lbs.
Rear Cargo Capacity	1000 lbs.
Braking	Front/Rear: Hydraulic disc with parking brake
Suspension	Front: High clearance gull wing A-arm independent Rear: Double A-arm independent
Shocks	Front/Rear: Spring pre-load adjustable, oil damped
Wheels	14" Cast aluminum alloy
Tires	Front: 27" x 9" x R14 CST Rear: 27" x 11" x R14 CST
Additional Features	Electronic power steering, Bosch® electronic throttle with work/normal modes, 4500 lb. winch with synthetic rope, two 3-person bench seats, TFT display, CFMoto ride app compatible, 12V outlet, USB port, mirrors, side nets, LED headlights/taillights with backup lights, tilt steering, roof, locking rear differential, large 10.5 gal. fuel tank, 2" receiver, adjustable driver's seat, removable storage box
Colors	Desert Tan, Twilight Blue, TT Camo

UFORCE SPECIFICATIONS

CFORCE
ALL-TERRAIN VEHICLES

*Adventure is unscripted.
So go off script.*

When it's a true adventure, crazy, fun stuff happens—and when you're riding a CFORCE, you're prepared. Get a load of the CFORCE 1000 Overland. A big, beefy, brute motivated by the unstoppable 963cc V-Twin. Next up, the perfect blend of power, comfort, and dependability—a 4X4 beauty called the 800 XC. If you're shopping for a perennial workhorse, the 600s are just the thing—the Touring model boasts seating for two. Rounding out the herd are the CFORCE 500 and the CFORCE 400. No frills. Plenty of thrills. And proof that a little money goes a long, long way.



Standard Features



3 Removable Hard-Side Travel Cases

Pack everything you need for your hunting, fishing, and camping trips into these rugged cases. When in doubt, bring it. Your gear will be safe and secure.

Heavy-Duty Bumpers

Experience unmatched protection with the heavy-duty steel front and rear bumpers.

Aluminum Alloy Wheels Featuring Beadlock Rims

Lightweight aluminum is better for acceleration, handling, and braking.

It's also very durable and corrosion resistant. Beadlock rims ensure the tire stays securely in place, ideal for rock crawling. Rugged CST Clincher off-road tires make for a spectacular mud flinging show.



Variable-Assist Electronic Power Steering

Delivers precise steering in all conditions, giving you ideal feedback and control on any terrain.

Front Fairing

The front fairing features an integrated windscreen and hand guards, protecting you from the elements while providing optimal visibility.

Bright White LED Projector Headlights

These headlights, along with stylish LED strips, provide exceptional visibility.

LED Floodlights

The high-intensity LED floodlights illuminate all the excitement rushing at you.

3500 lb. Winch

Think of it as your onboard lasso. This winch features synthetic rope, making it lightweight, easy to handle, and stronger than the ox.

Standard Features

Electronic Power Steering

EPS uses an electronic control unit to interpret steering input and provide the appropriate level of feedback with respect to speed. At low speeds you get more assistance.

At higher speeds, less assistance gives you more feedback in unpredictable terrain.

Fender Flares

Getting dirty is expected. But these fender flares will keep mud and water in check. At least enough for you and your passenger to keep an ear-to-ear grin on your face.

Aluminum Alloy Wheels

14" cast aluminum wheels boast lightweight construction, better for acceleration, handling, and braking. These polished rims don't just look great, they're also very durable and corrosion resistant. Rugged off-road tires give you more bite in all terrain.

Sculpted 2-Up Seating

Designed and constructed to help you go further, faster, and more comfortably, we construct our saddles with robust materials and high-quality stitching. Bring along a friend, or your spouse, and they'll be just as happy on every adventure as you are.



Hand Guards

Reinforced plastic hand guards protect your digits from trees, brush, and mud.

Bright White Projector Beam Headlights

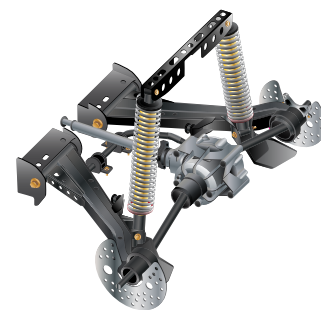
These sleek headlights provide exceptional visibility and are accented with LED strips creating an aggressive look.

3500 lb. Winch

This heavy-duty winch features synthetic rope, a lighter, stronger, safer alternative to steel cable. What's more, it's far easier to handle. Especially when you're working fast.



Shown with optional accessories.



Rear Trailing Arm Suspension

The rear trailing arm suspension is equipped with fully adjustable gas shocks, making it smooth as a magic carpet ride.

Bash Plate and Skid Plates

Adventure riding is a full contact sport. Your Overland comes with a high-strength aluminum bash plate and durable full-length HDPE skid plates.

2-Up Seat Compatible

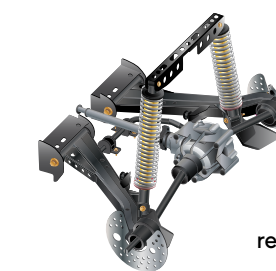
There are two sides to every adventure. Which is why you need to bring a friend with the accessory passenger seat.



Shown with optional accessories.

Front and Rear Composite-Over-Steel Racks

Pack all your gear and accessories on the front and rear composite-over-steel racks. These rugged racks are designed for added durability and ease of attachment.



Rear Trailing Arm Suspension

The trailing arm suspension with fully adjustable gas shocks creates a smoother, more comfortable ride. It also improves traction and stability by maintaining better contact with the ground. What's more, better alignment of the wheels reduces sway or bounce during cornering.

Standard Features

Hand Guards

Reinforced plastic hand guards protect your digits from trees, brush, and mud.

Sculpted 2-Up Seating

The 600 Touring features 2-Up seating designed and constructed to help you go further, faster, and more comfortably. Take a closer look at the robust materials and high-quality stitching.

Fender Flares

Getting dirty is proof of adventure. But these fender flares will keep excessive mud and water from slowing you down.



Aluminum Alloy Wheels

12" cast aluminum wheels boast lightweight construction—better for acceleration, handling, and braking. Not just great looking, they're very durable and corrosion resistant. Grippy tires have plenty of bite on all terrain.

Electronic Power Steering

EPS uses an electronic control unit to interpret steering input and provide the appropriate level of feedback with respect to speed. At low speeds you get more assistance. At higher speeds, less assistance gives you more feedback in unpredictable terrain.

Front and Rear Composite-Over-Steel Racks

Pack all your gear and accessories on the front and rear composite-over-steel racks. These rugged racks are designed for added durability and ease of attachment.



Ridevision™ LED Headlights

Brighter and much more durable than halogen, LED lighting offers unmatched visibility and safety, especially in lowlight conditions. LED is less prone to damage from shock, vibration, and temperature changes.

3500 lb. Winch

This heavy-duty winch features synthetic rope, a lighter, stronger, safer alternative to steel cable. What's more, it's far easier to handle.

Engine and Suspension

With a single cylinder 580cc engine pumping out 45 horsepower, an effortless CVTech transmission, and a 50" wheelbase, this ATV is built for power and agility. With a ground clearance of 10.6" and front and rear double A-arm independent suspension, you can navigate rough terrain with ease and precision.



Shown with optional accessories.

Standard Features

LCD Display

The vibrant display makes it easy to monitor twelve engine vitals at a glance.



Ridevision™ LED Headlights

LED array reflector-style sets you apart. See better with light that's 80% brighter than halogen (400 gets halogen headlights with LED accents).



USB Port

Power up on the go. Also has a 12-volt accessory outlet.

2500 lb. Winch

Handlebar-mounted switch for easy on-off control (500 only)

Front and Rear Composite-Over-Steel Racks

Pack up to 75 lbs. up front. And 100 lbs. in the rear. These rugged racks are designed for added durability and ease of attachment. (400 has steel racks.)

Electronic Power Steering

An electronic control unit interprets steering input and provides appropriate feedback with respect to speed. At low speeds you get more assistance — less at higher speeds. (Not available on 400 model.)

Aluminum Alloy Wheels

12" cast aluminum wheels boast lightweight construction for better acceleration, handling, and braking. They look great, plus they're very durable and corrosion resistant. Grippy tires have plenty of bite on all terrain. (400 has steel wheels.)

The CFORCE 400. The lowest-priced ATV around delivers the highest satisfaction.

This mid-size entry-level machine gets you access to adventure without stretching your budget. Comes loaded with standard steel racks, steel rims, halogen headlights with LED accents, a USB port, 12-volt accessory plug, and an LCD display. Pretty good for the lowest priced ATV around.



Shown with optional accessories.

CFORCE 400

Shown with optional accessories.



399cc single cylinder EFI engine, front and rear steel racks, steel rims, LCD display.

CFORCE 500

Shown with optional accessories.



495cc single cylinder EFI engine, front/rear composite-over-steel racks, aluminum rims, 2500 lb. winch, electronic power steering.

CFORCE 600

Shown with optional accessories.



580cc single cylinder EFI engine, front/rear composite-over-steel racks, aluminum rims, 3500 lb. winch, electronic power steering.

CFORCE 600 TOURING



580cc single cylinder EFI engine, 2-up seating, front and rear racks, 3500 lb. winch, electronic power steering.

CFORCE 800 XC

Shown with optional accessories.



800cc V-twin EFI engine, front and rear composite-over-steel racks, 2-up seating, trailing arm rear suspension, 3500 lb. winch.

CFORCE 1000 OVERLAND



963cc V-twin EFI engine, beadlock rims, 3 removable hard-side travel cases, trailing arm rear suspension, 3500 lb. winch.



CFORCE 400



CFORCE 500



CFORCE 600



CFORCE 600 Touring



CFORCE 800 XC



CFORCE 1000 Overland

	CFORCE 400	CFORCE 500	CFORCE 600	CFORCE 600 Touring	CFORCE 800 XC	CFORCE 1000 Overland
Engine Type	Single cylinder, liquid cooled, 4-stroke, SOHC, 4-valve	Single cylinder, liquid cooled, 4-stroke, SOHC, 4-valve	Single cylinder, liquid cooled, 4-stroke, SOHC, 4-valve	Single cylinder, liquid cooled, 4-stroke, SOHC, 4-valve	V-Twin, liquid cooled, 4-stroke, SOHC, 8-valve	V-Twin, liquid cooled, 4-stroke, SOHC, 8-valve
Displacement	399cc	495cc	580cc	580cc	800cc	963cc
Horsepower	30 HP @ 7200 RPM	35 HP @ 6250 RPM	45 HP @ 6500 RPM	45 HP @ 6500 RPM	60 HP @ 7250 RPM	74 HP @ 7000 RPM
Fuel System	Bosch® EFI	Bosch® EFI	Bosch® EFI	Bosch® EFI	Delphi® EFI	Bosch® EFI
Transmission	CVTech Automatic L/H/N/R/P	CVTech Automatic L/H/N/R/P	CVTech Automatic L/H/N/R/P	CVTech Automatic L/H/N/R/P	CVTech Automatic P/R/N/H/L	CVTech Automatic P/R/N/H/L
Drive	2WD/4WD/4WD lock	2WD/4WD/4WD lock	2WD/4WD/4WD lock	2WD/4WD/4WD lock	2WD/4WD/4WD lock	2WD/4WD/4WD lock
L x W x H	80.6" x 44.3" x 45.3"	80.6" x 44.3" x 45.7"	80.1" x 46.5" x 48"	88" x 46.5" x 54.7"	90.9" x 49.8" x 55.9"	90.9" x 49.8" x 55.9"
Wheel Base	49.6"	49.6"	50.4"	58.3"	58.3"	58.3"
Ground Clearance	9.8"	10.3"	10.6"	10.6"	11.2"	11.8"
Wheel Travel	Front/Rear: 7.5"/8.9"	Front/Rear: 7.5"/8.9"	Front/Rear: 6.3"/8.3"	Front/Rear: 6.3"/8.3"	Front/Rear: 6.7"/7.5"	Front/Rear: 6.7"/7.5"
Curb Weight	732 lbs.	783 lbs.	871 lbs.	915 lbs.	1058 lbs.	1058 lbs.
Rack Capacity	Front/Rear: 75 lbs./100lbs.	Front/Rear: 75 lbs./100 lbs.	Front/Rear: 75 lbs./100 lbs.	Front/Rear: 100 lbs./75 lbs.	Front/Rear: 100 lbs./75 lbs.	Front/Rear: 100 lbs./75 lbs.
Braking	Front/Rear: Hydraulic disc with parking brake	Front/Rear: Hydraulic disc with parking brake	Front/Rear: Hydraulic disc with parking brake	Front/Rear: Hydraulic disc with parking brake	Front/Rear: Hydraulic disc with parking brake	Front/Rear: Hydraulic disc with parking brake
Suspension	Front: High clearance gull wing A-arm independent Rear: Double A-arm independent	Front: High clearance gull wing A-arm independent Rear: Double A-arm independent	Front/Rear: Double A-arm independent	Front/Rear: Double A-arm independent	Front: High clearance A-arm independent Rear: Trailing arm independent	Front: High clearance A-arm independent; Rear: Trailing arm independent
Shocks	Front/Rear: Spring pre-load adjustable, oil damped	Front/Rear: Spring pre-load adjustable, oil damped	Front/Rear: Spring pre-load adjustable, oil damped	Front/Rear: Spring pre-load adjustable, oil damped	Front/Rear: High pressure gas, compression/rebound adjustable	Front/Rear: High pressure gas, compression/rebound adjustable
Wheels	12" Steel	12" Cast aluminum alloy	12" Cast aluminum alloy	12" Cast aluminum alloy	14" Cast aluminum alloy	14" Cast aluminum alloy with beadlocks
Tires	Front: 24" x 8" x R12 Rear: 24" x 10" x R12	Front: 25" x 8" x R12 Rear: 25" x 10" x R12	Front: 25" x 8" x R12 Rear: 25" x 10" x R12	Front: 25" x 8" x R12 Rear: 25" x 10" x R12	Front: 26" x 9" x R14 CST Rear: 26" x 11" x R14 CST	Front: 27" x 9" x R14 CST Rear: 27" x 11" x R14 CST
Additional Features	LCD display, engine braking, halogen headlights with LED accents, LED taillights with backup lights, steel racks, 2" receiver, 12V outlet, USB port	Electronic power steering, 2500 lb. winch, LCD display, Ridevision™ LED headlights and taillights with backup lights, steel racks w/composite cover, engine braking, 2" receiver, 12V outlet, USB port	Electronic power steering, Bosch® electronic throttle with work/normal modes, 3500 lb. winch with synthetic rope, LCD display, Bluetooth call indicator, engine braking, Ridevision™ LED headlights & taillights with backup lights, steel racks w/composite cover, 2" receiver, hand guards, 12V outlet, USB port	Electronic power steering, Bosch® electronic throttle with work/normal modes, 3500 lb. winch with synthetic rope, LCD display, Bluetooth call indicator, engine braking, Ridevision™ LED headlights & taillights with backup lights, steel racks w/composite cover, 2" receiver, hand guards, 12V outlet, USB port	Brushless electronic power steering, 3500 lb. winch with synthetic rope, LED headlights & taillights with daytime running lights, steel racks w/composite cover, LCD display, 2" receiver, hand guards, passenger seat, fender flares, 12V outlet, USB port	Brushless electronic power steering, 3500 lb. winch with synthetic rope, LED headlights & taillights with daytime running lights, LED floodlights, steel racks w/composite cover, LCD gauge, 2" receiver, wind screen, 3-piece cargo box, hand guards, heavy-duty steel bumpers, aluminum bash plate, heavy-duty skid plates, fender flares 12V outlet, USB port
Colors	Jet Black (injected), Rocket Red (injected), Hunter Green (injected)	Nebula Black, Royal Blue, Lava Orange, True Timber Camo	Nebula Black, Magma Red, Velocity Grey, True Timber Camo	Nebula Black, Magma Red, Velocity Grey, True Timber Camo	Velocity Grey, Lava Orange, Royal Blue, True Timber Camo	Tactical Green, Desert Tan

CFORCE SPECIFICATIONS

CFORCE 110



Parking Brake

110cc Air-cooled 4-Stroke Engine (110)

Electric Start (110)

LED Front and Brake Lights (110)

2" LCD Instrument Gauge (110)

Magnetic Safety Tether

Adjustable Throttle/Speed Limiter

App-based Geofence Technology

Top Speed 28 mph

Comfortable Seats with the right ergonomics for young riders.

Ultra-Quiet Performance (EV110)

Powered by a 1500W brushless electric motor for smooth acceleration and linear torque delivery.

40-Mile Riding Range (EV110)

Over 3 hours of runtime. Lithium-Ion battery charges from 0% to 100% in 4 hours.

High-Visibility LED Front and Rear Lights (EV110)

3.5" LCD Instrument Gauge (EV110)

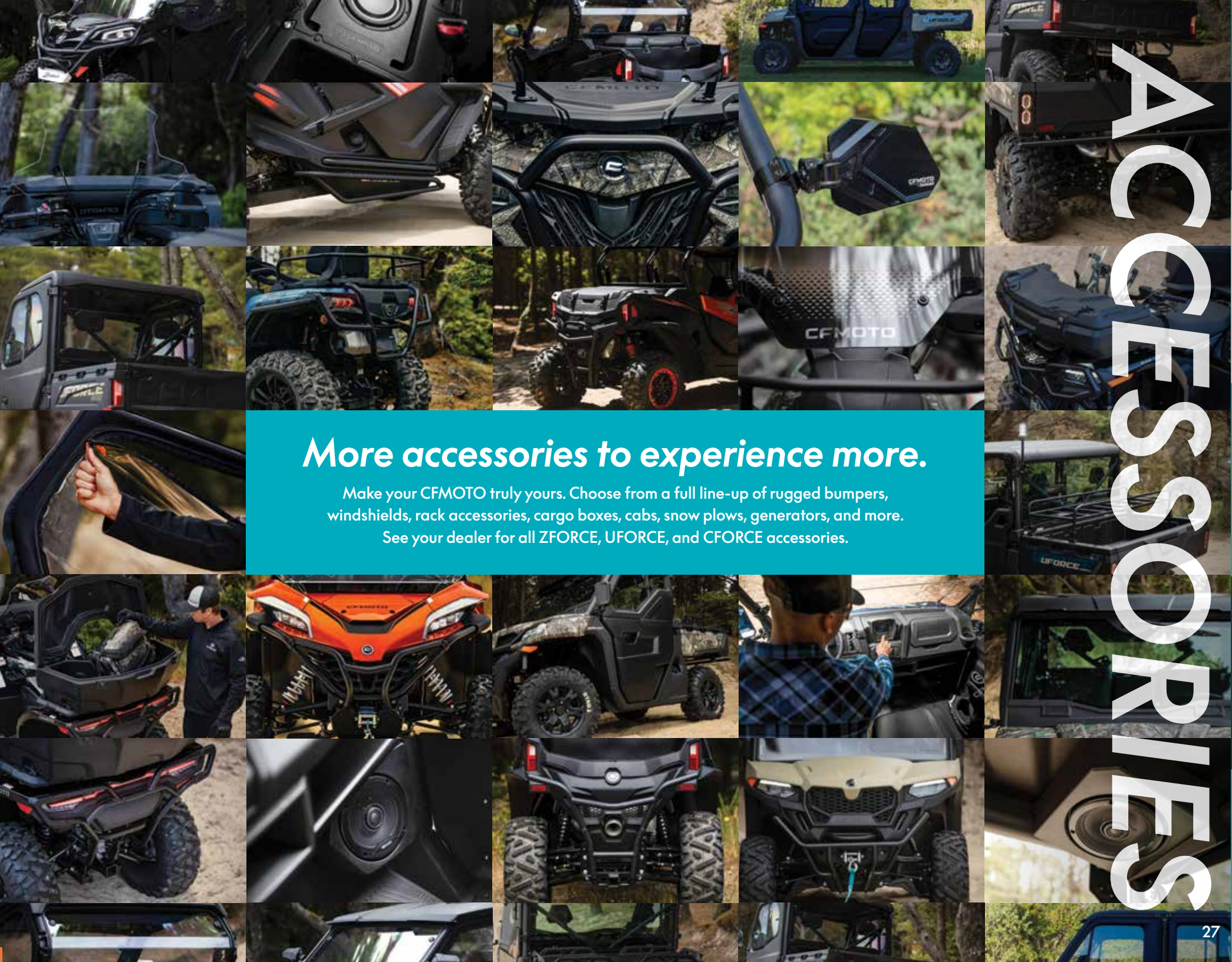
Displays battery percentage, speedometer, and more.

CFORCE EV110



Max speed: 28 mph. Max thrills: Unlimited.

Here are two excellent options for building skills and confidence. The all-electric 110EV, and the gas powered CFORCE 110. Both are designed for riders aged 10 and up. Apart from their powertrains, underpinnings are the same: Double A-arm independent suspension, 5-level adjustable shocks, and hydraulic disc brakes. Advanced safety features and quality construction are what every young rider needs to unleash the unlimited thrills of off-road riding.



ACCESSORIES

More accessories to experience more.

Make your CFMOTO truly yours. Choose from a full line-up of rugged bumpers, windshields, rack accessories, cargo boxes, cabs, snow plows, generators, and more. See your dealer for all ZFORCE, UFORCE, and CFORCE accessories.