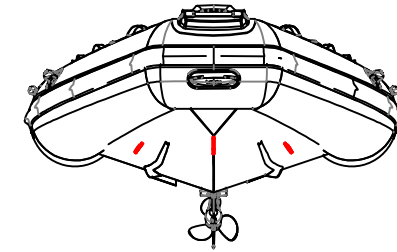
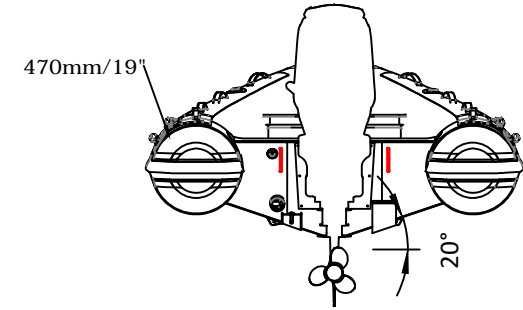
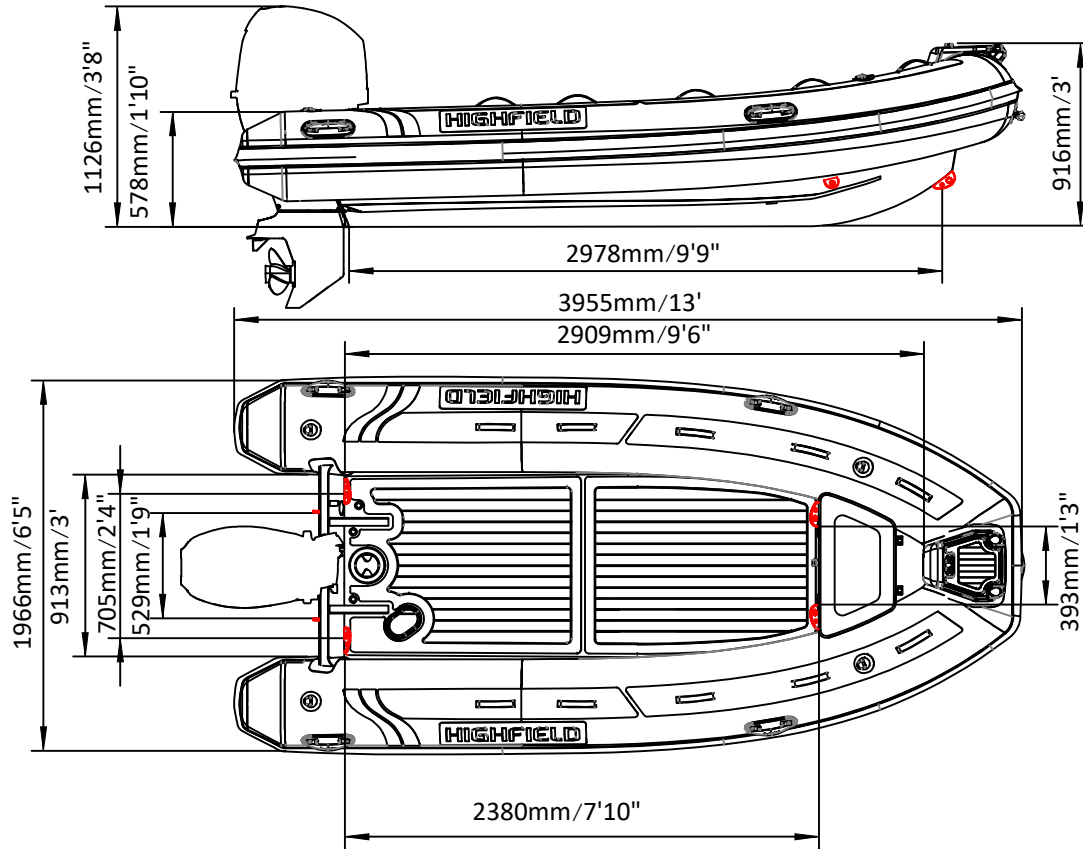


Classic 400

SPECIFICATIONS



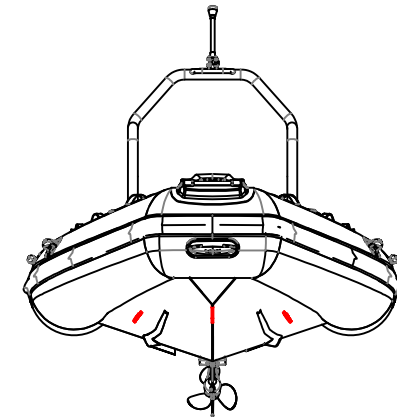
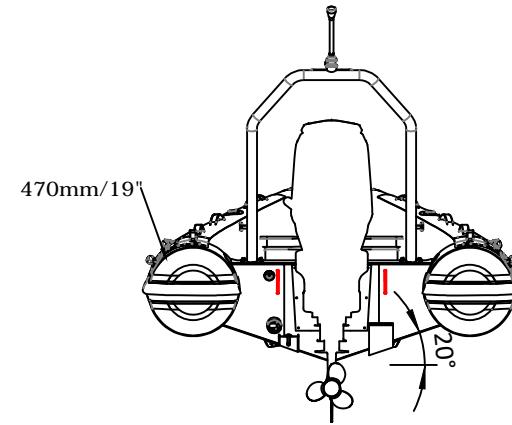
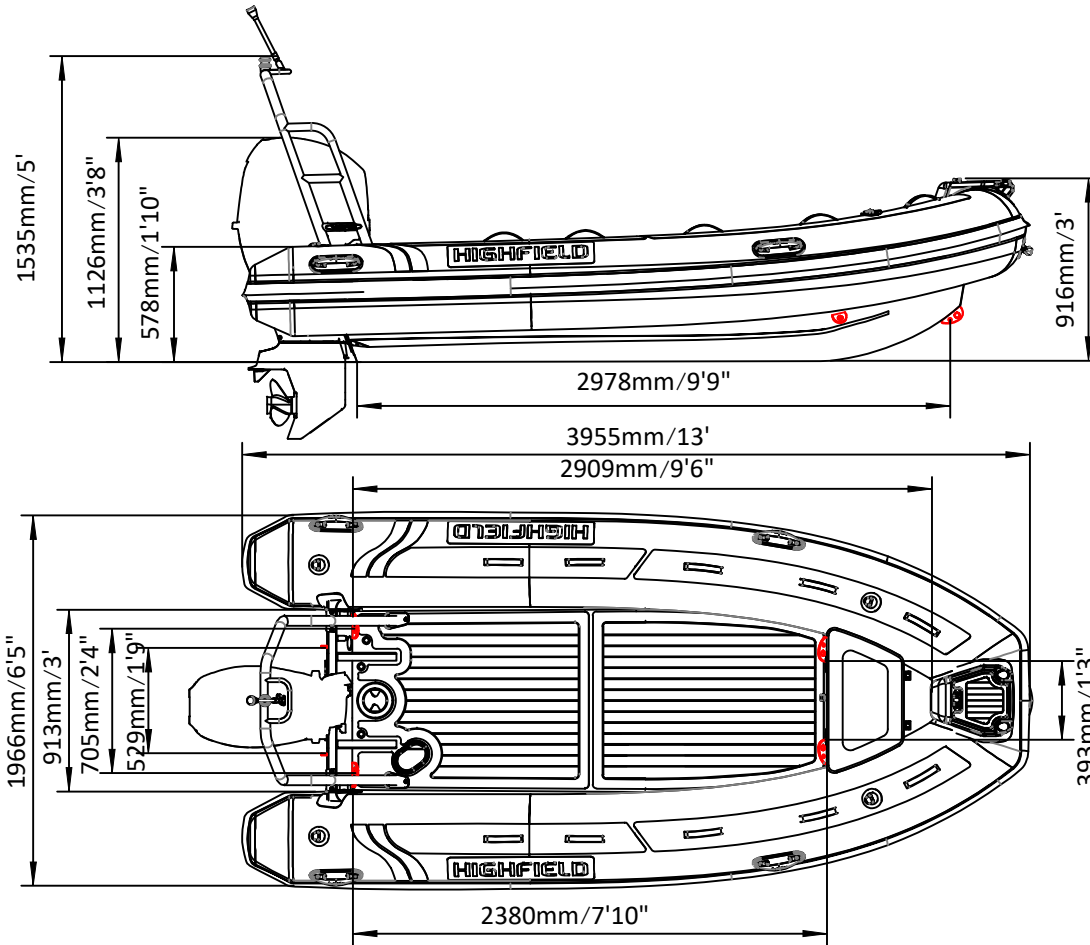
SPECIFICATIONS AND MAXIMUM CAPACITIES (Subject to change without notice. Tolerances: dimensions ±2.5%, weights ±5%)

MODEL	ISO 5819 PART	ISO 6188	Passenger		#	Crew		Shaft	Outboard Engine				Fuel				Wet Weight (Approximate) 50HP (36.75KW)		AIR CHAMBERS	Inflator							
			KG	LB		KG	LB		KG	LB	KG	LB	KG	LB	L	GAL	KG	LB		PSI	BAR						
			Max power KW	HP		Max weight KG	LB		KG	LB	KG	LB	KG	LB	KG	LB	KG	LB		PSI	BAR						
CL400	3	C	640	1411	8	600	1323	L	36.75	50	118	260	160	353	/	/	/	/	/	/	/	/	278	613	4	3.63	0.25

Weight: boat only.

Classic 400

SPECIFICATIONS



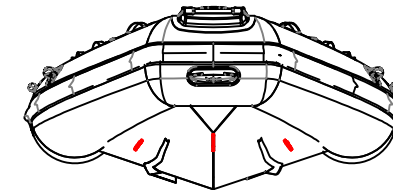
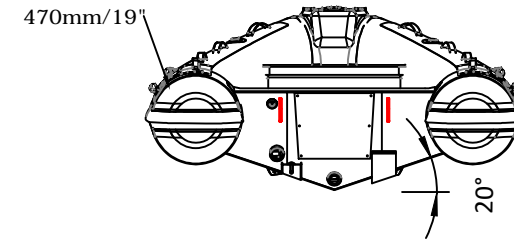
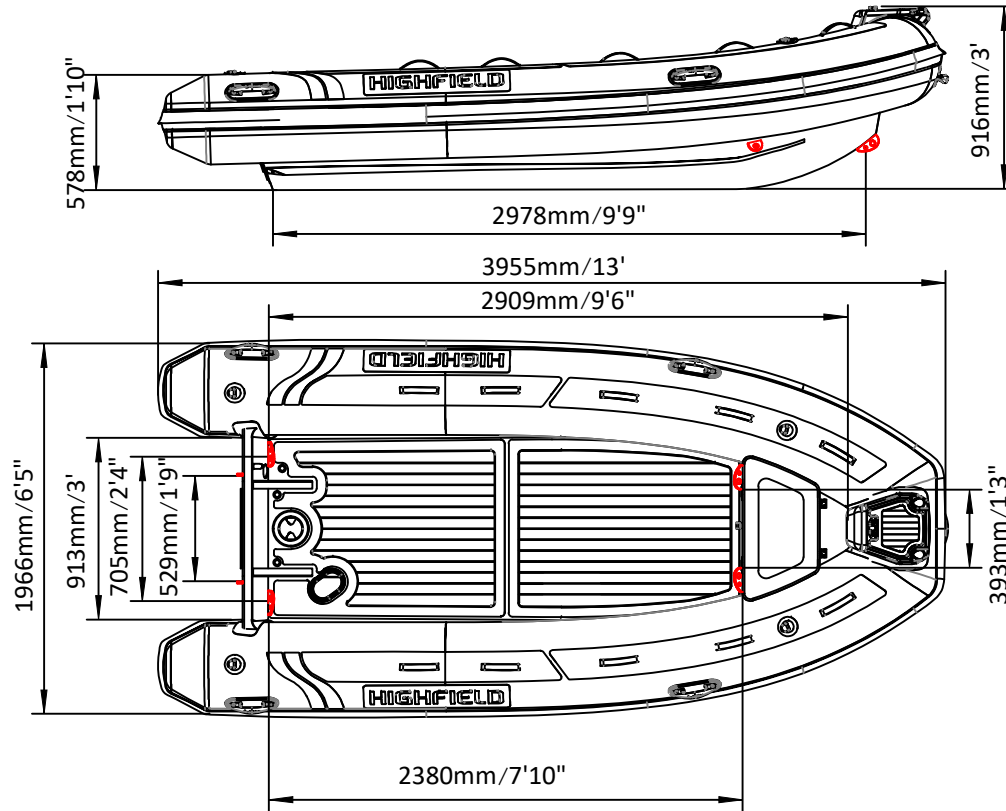
SPECIFICATIONS AND MAXIMUM CAPACITIES (Subject to change without notice. Tolerances: dimensions ±2.5%, weights ±5%)

MODEL	ISO 6185 PART	ISO 6185	Passengers		#	Weight		Shaft	Outboard Engine				Rollbar		Fuel				Wet Weight (Approximate) 50HP (36.75KW)		AIR CHAMBERS	Inflator					
			KG	LB		KG	LB		Max power	Max weight	KG	LB	KG	LB	KG	LB	L	GAL	KG	LB		PSI	BAR				
									KW	HP	KG	LB															
CL400	3	C	640	1411	8	600	1323	L	36.75	50	118	260	160	353	13	28.7	/	/	/	/	/	/	278	613	4	3.63	0.25

Weight: boat only.

Classic 400

SPECIFICATIONS



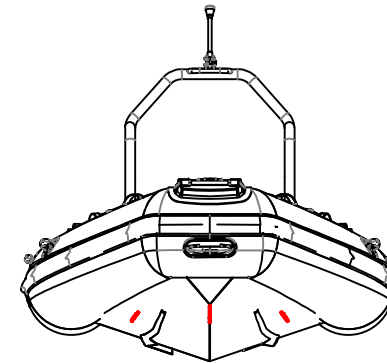
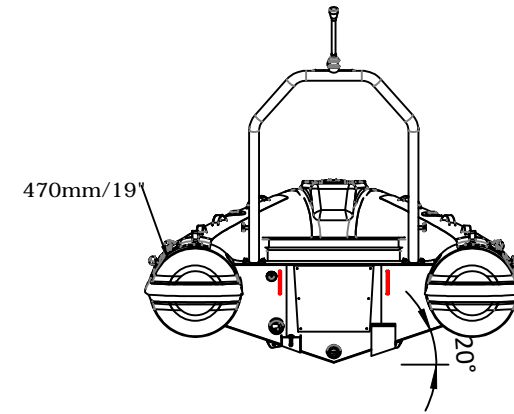
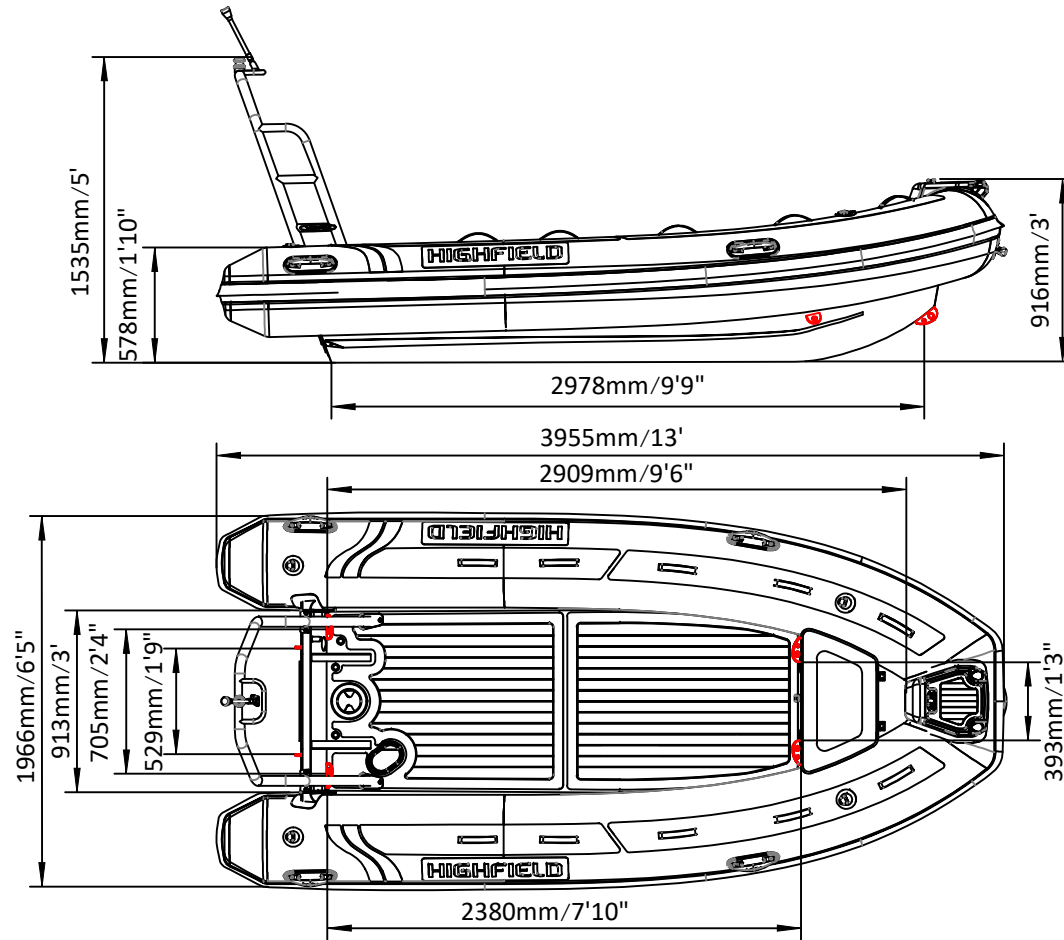
SPECIFICATIONS AND MAXIMUM CAPACITIES (Subject to change without notice. Tolerances: dimensions ±2.5%, weights ±5%)

MODEL	ISO 6185 PART	ISO 6185	Passengers		#	Weight		Shaft	Outboard Engine				Fuel				Wet Weight (Approximate) 50HP (36.75KW)		AIR CHAMBERS	Pressure							
			KG	LB		KG	LB		KG	LB	KG	LB	KG	LB	L	GAL	KG	LB		PSI	BAR						
			Max power KW	HP		Max weight KG	LB		KG	LB	KG	LB	KG	LB	KG	LB	KG	LB		PSI	BAR						
CL400	3	C	640	1411	8	600	1323	L	36.75	50	118	260	160	353	/	/	/	/	/	/	/	/	278	613	4	3.63	0.25

Weight: boat only.

Classic 400

SPECIFICATIONS



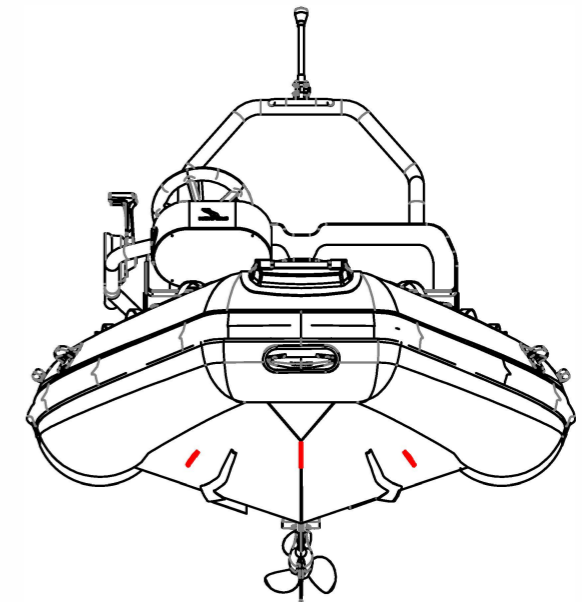
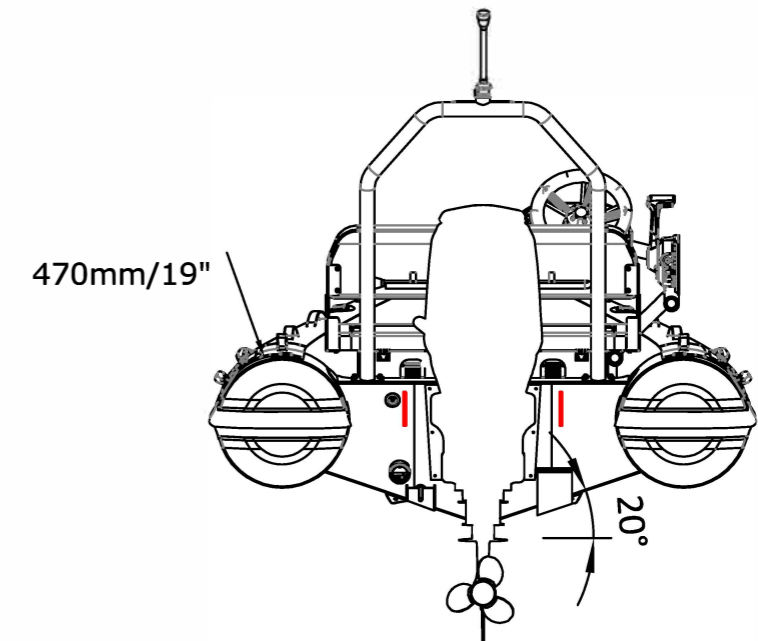
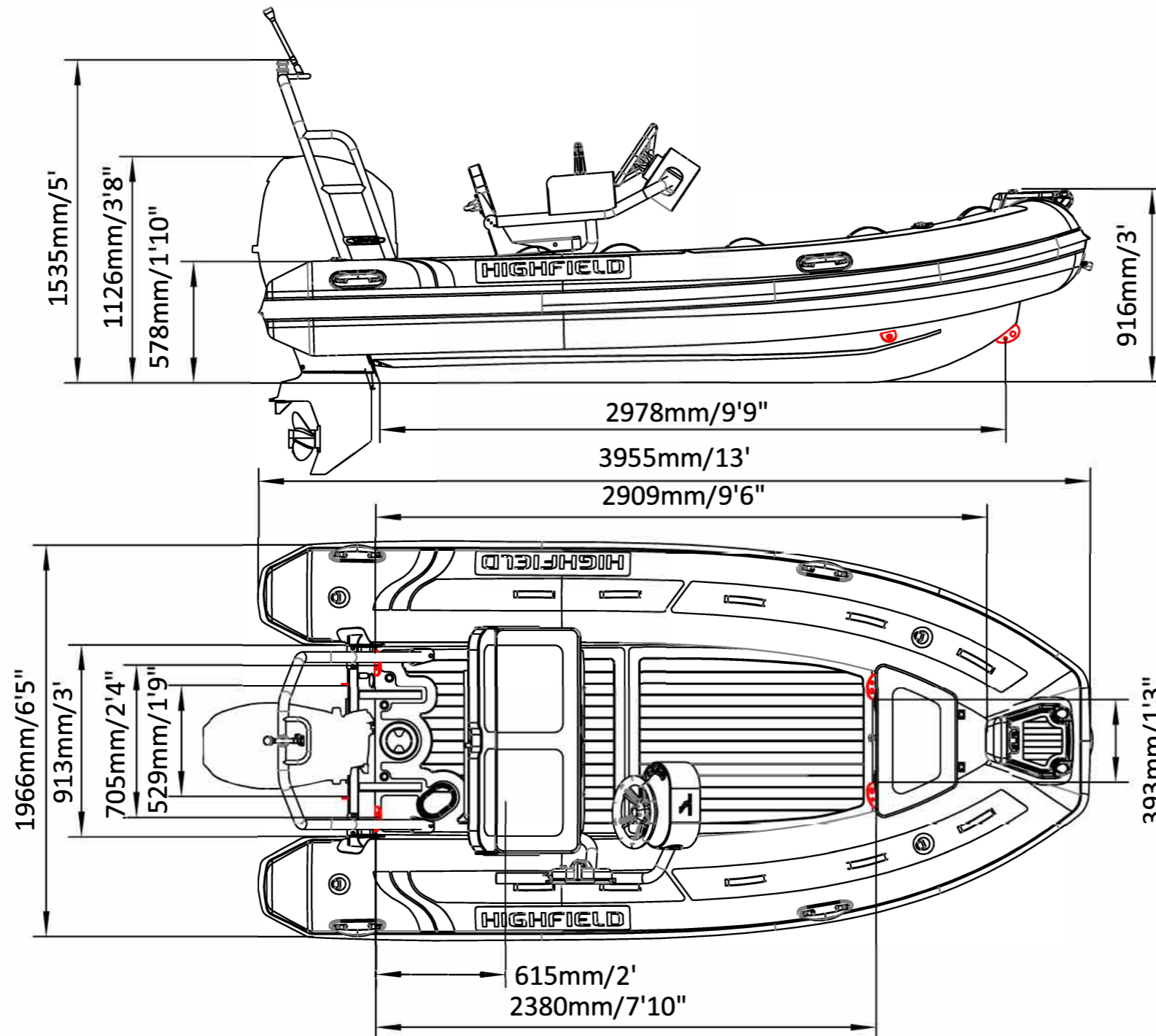
SPECIFICATIONS AND MAXIMUM CAPACITIES (Subject to change without notice. Tolerances: dimensions ±2.5%, weights ±5%)

MODEL	ISO 6185 PART	ISO 6185	Passenger		#	Weight		Shaft	Outboard Engine				Rollbar		Fuel				Wet Weight (Approximate) 50HP (36.75KW)		AIR CHAMBERS	Inflator					
			KG	LB		KG	LB		KW	HP	Max weight		KG	LB	KG	LB	L	GAL	KG	LB		PSI	BAR				
						KG	LB																				
CL400	3	C	640	1411	8	600	1323	L	36.75	50	118	260	160	353	13	28.7	/	/	/	/	/	/	278	613	4	3.63	0.25

Weight: boat only.

Classic 400

SPECIFICATIONS



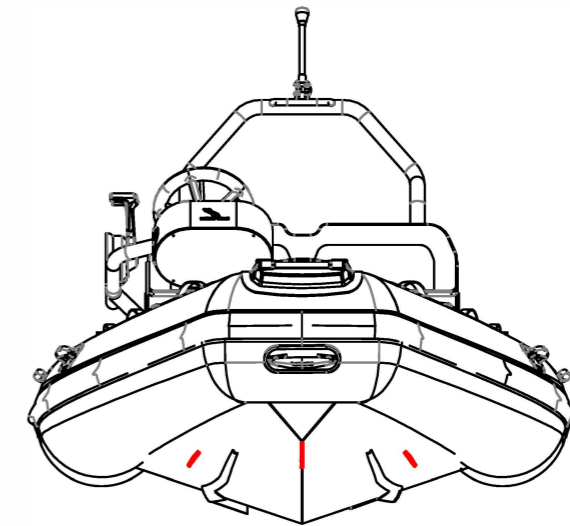
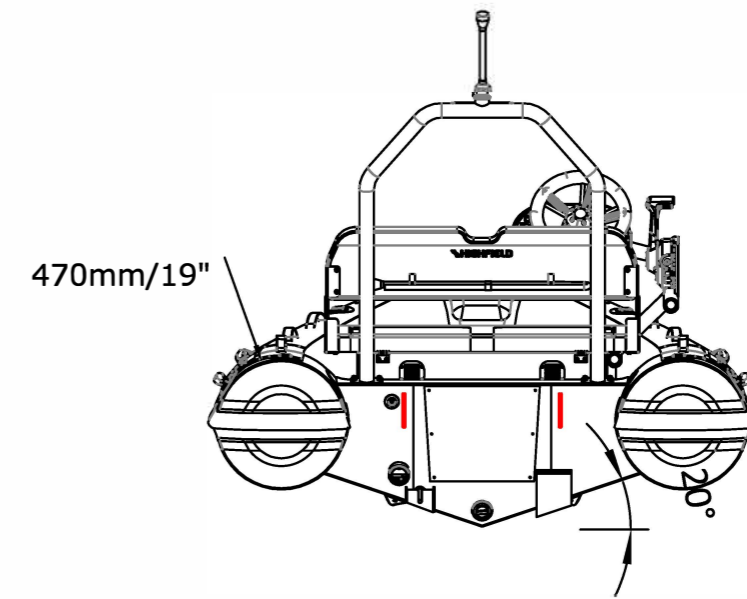
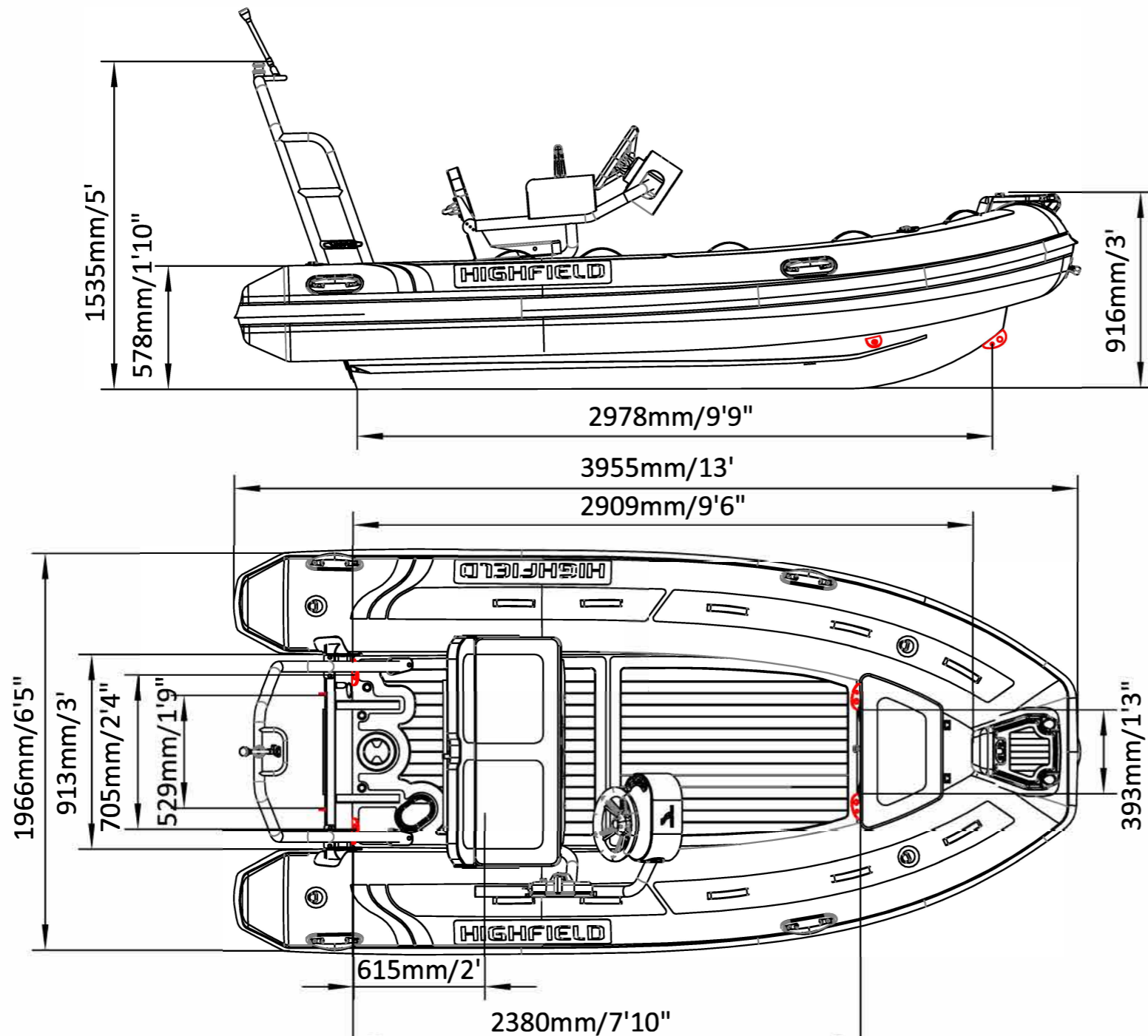
SPECIFICATIONS AND MAXIMUM CAPACITIES (Subject to change without notice. Tolerances: dimensions ±2.5%, weights ±5%)

MODEL	ISO 6185 PART	ISO 6185	Passengers		#	Weight		Shaft	Outboard Engine		Fuel		Rollbar		Storage		Wet Weight (Approximate) 50HP (36.75KW)		AIR CHAMBERS								
			KG	LB		KG	LB		KG	LB	KG	LB	KG	LB	KG	LB	KG	LB	PSI	BAR							
			KG	LB		KW	HP		KG	LB	KG	LB	KG	LB	L	GAL	KG	LB									
CL400	3	C	640	1411	8	600	1323	L	36.75	50	118	260	160	353	39.5	87	13	29	/	/	/	/	330.5	729	4	3.63	0.25

Weight: boat only.

Classic 400

SPECIFICATIONS



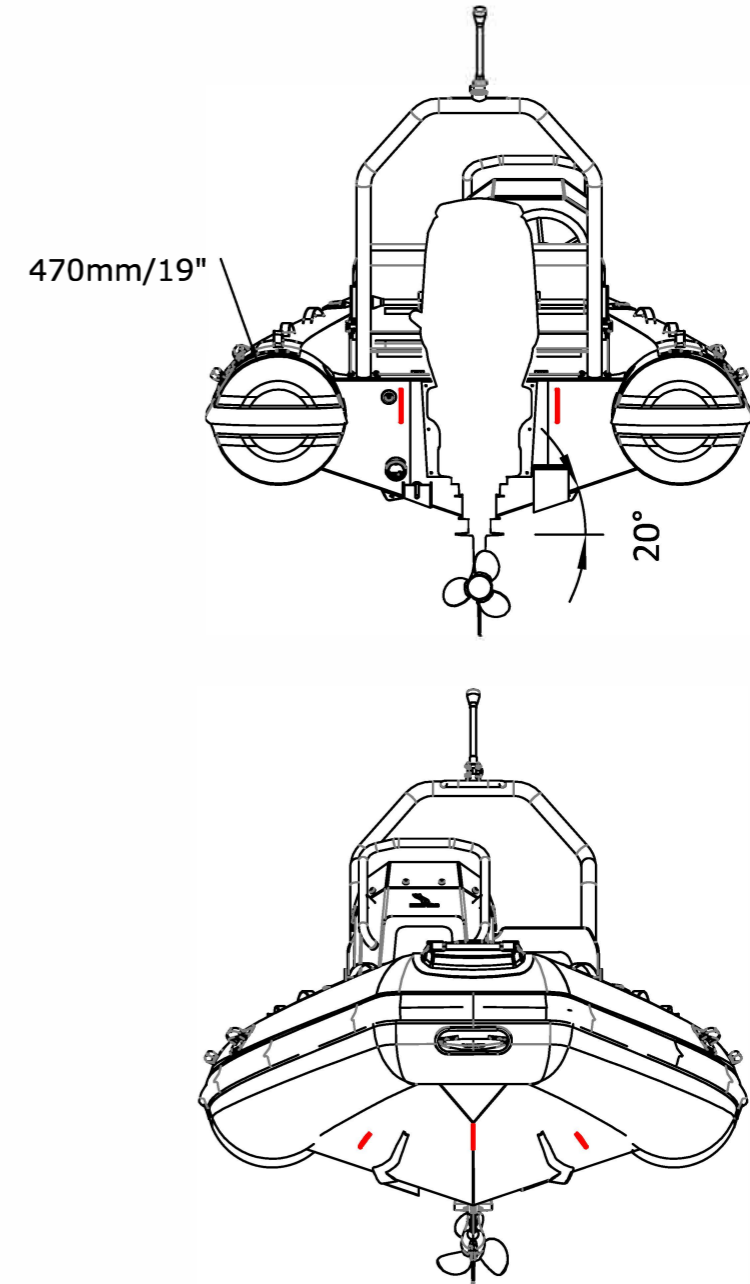
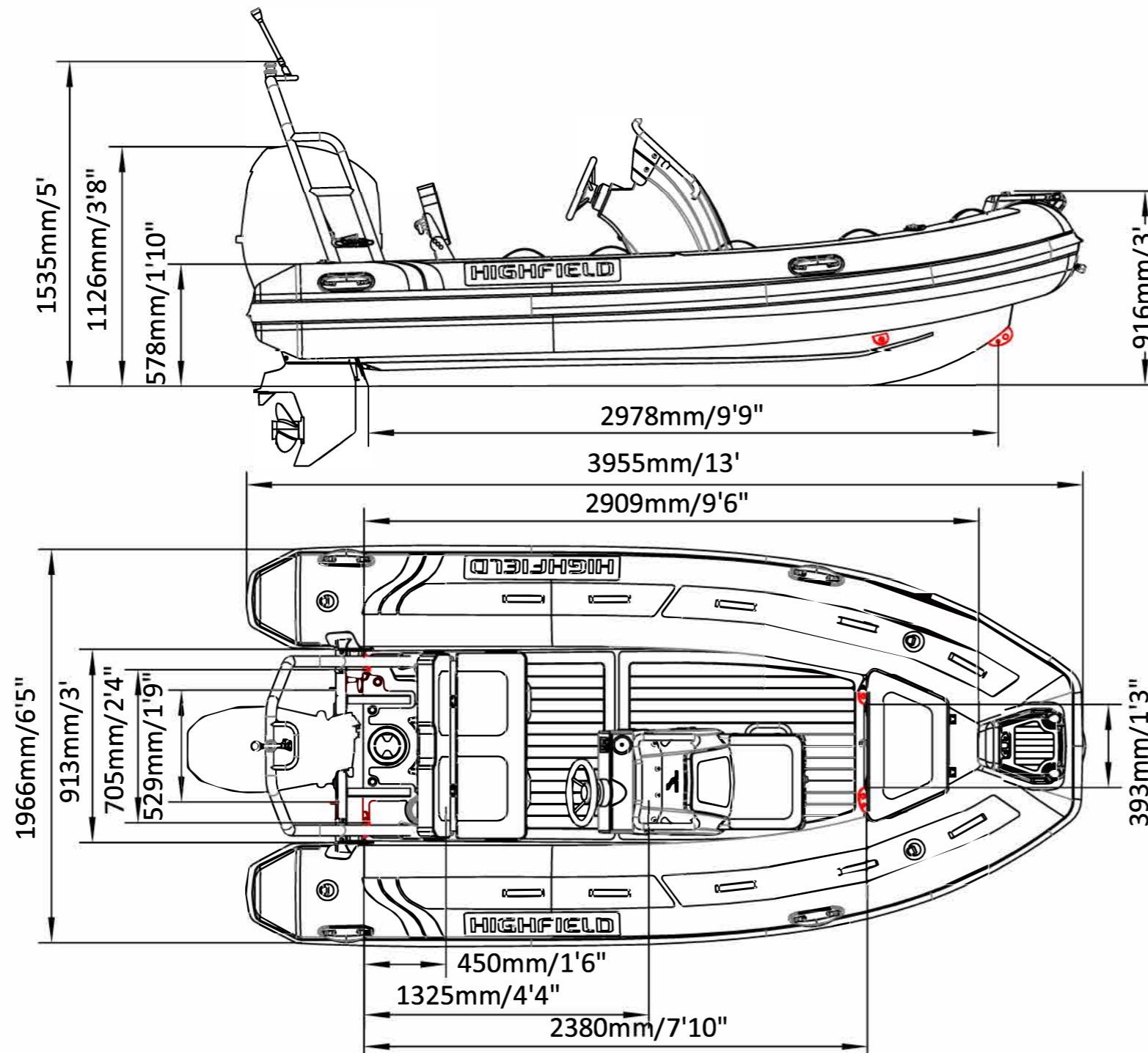
SPECIFICATIONS AND MAXIMUM CAPACITIES (Subject to change without notice. Tolerances: dimensions ±2.5%, weights ±5%)

MODEL	ISO 6185 PART	ISO 6185	Passengers		#	Weight		Shaft	Outboard Engine		FCT8XL		Rollbar		Fuel		Wet Weight (Approximate) 50HP (36.75KW)		AIR CHAMBERS	Pressure							
			KG	LB		KG	LB		KG	LB	KG	LB	KG	LB	KG	LB	KG	LB		KG	LB	PSI	BAR				
CL400	3	C	640	1411	8	600	1323	L	36.75	50	118	260	160	353	39.5	87	13	28.7	/	/	/	/	330.5	729	4	3.63	0.25

Weight: boat only.

Classic 400

SPECIFICATIONS



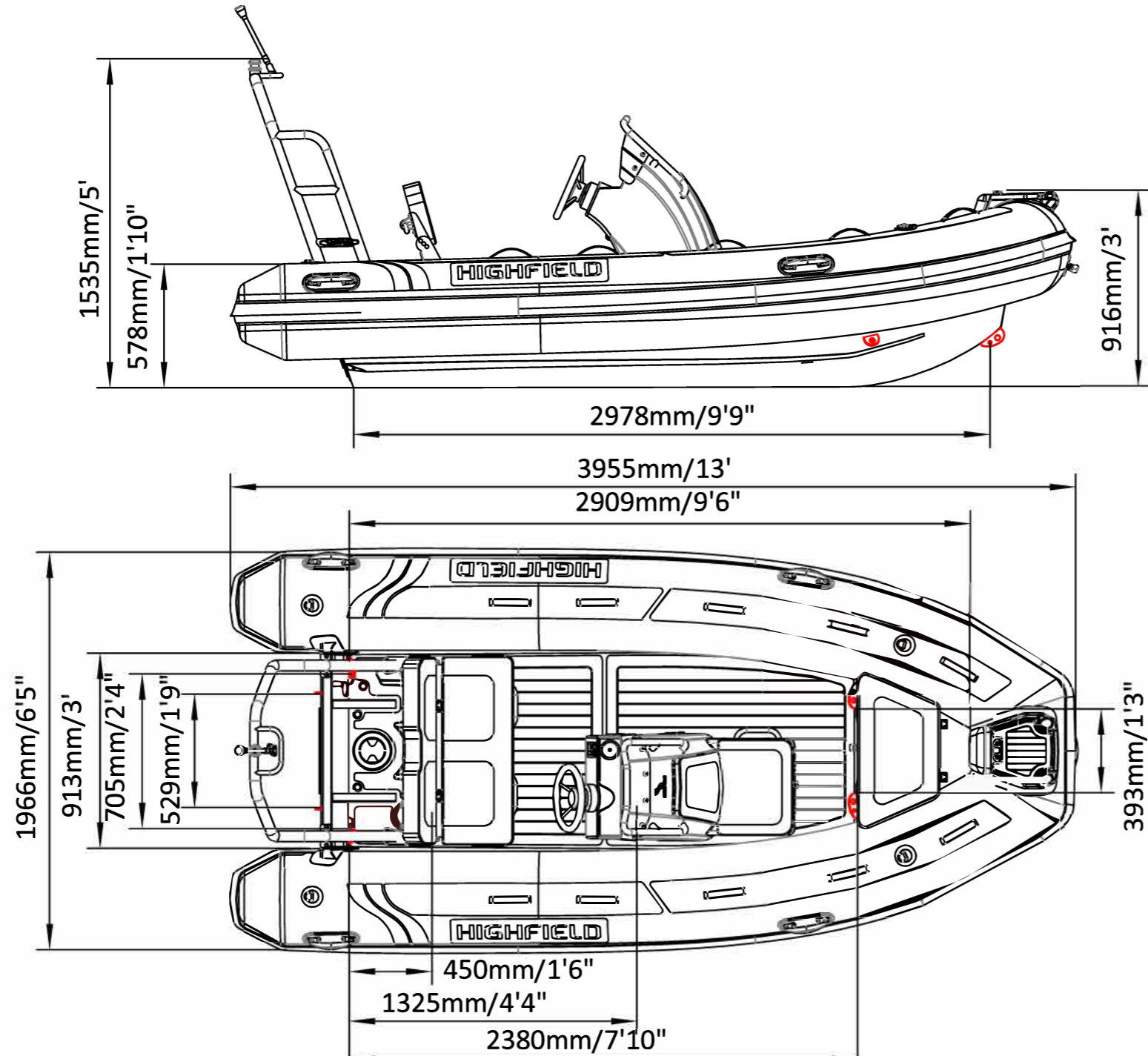
SPECIFICATIONS AND MAXIMUM CAPACITIES (Subject to change without notice. Tolerances: dimensions ±2.5%, weights ±5%)

MODEL	ISO 6185 PART	ISO 6185	Person		#	Person		Shaft	Outboard Engine				SDS500		RS900		Rollbar		/		Wet Weight (Approximate) 50HP (36.75KW)		AIR CHAMBERS	Pressure			
			KG	LB		KG	LB		Max power KW	Max weight KG	Max weight LB	KG	LB	KG	LB	KG	LB	L	GAL	KG	LB	PSI		BAR			
CL400	3	C	640	1411	8	600	1323	L	36.75	50	118	260	160	353	37.5	83	20.5	45	13	29	/	/	349	769	4	3.63	0.25

Weight: boat only.

Classic 400

SPECIFICATIONS



SPECIFICATIONS AND MAXIMUM CAPACITIES (Subject to change without notice. Tolerances: dimensions ±2.5%, weights ±5%)

MODEL	ISO 6185 PART	ISO 6185	Passengers		#	Weight		Shaft	Outboard Engine		Fuel Tank		Rollbar		Wet Weight (Approximate) 50HP (36.75KW)		AIR CHAMBERS	Pressure									
			KG	LB		KG	LB		Max power	Max weight	KG	LB	KG	LB	KG	LB		L	GAL	KG	LB	PSI	BAR				
									KW	HP	KG	LB	KG	LB	KG	LB		KG	LB								
CL400	3	C	640	1411	8	600	1323	L	36.75	50	118	260	160	353	37.5	83	20.5	45	13	29	/	/	349	769	4	3.63	0.25

Weight: boat only.