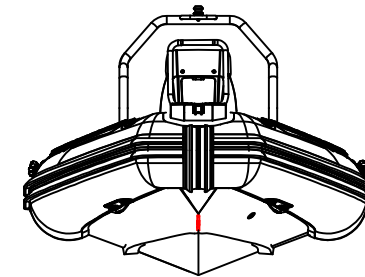
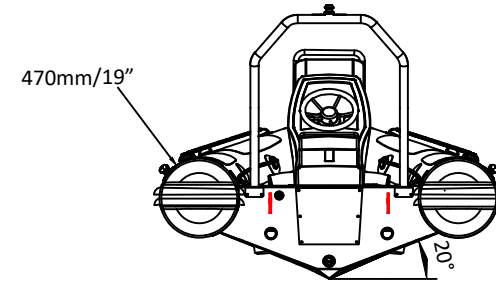
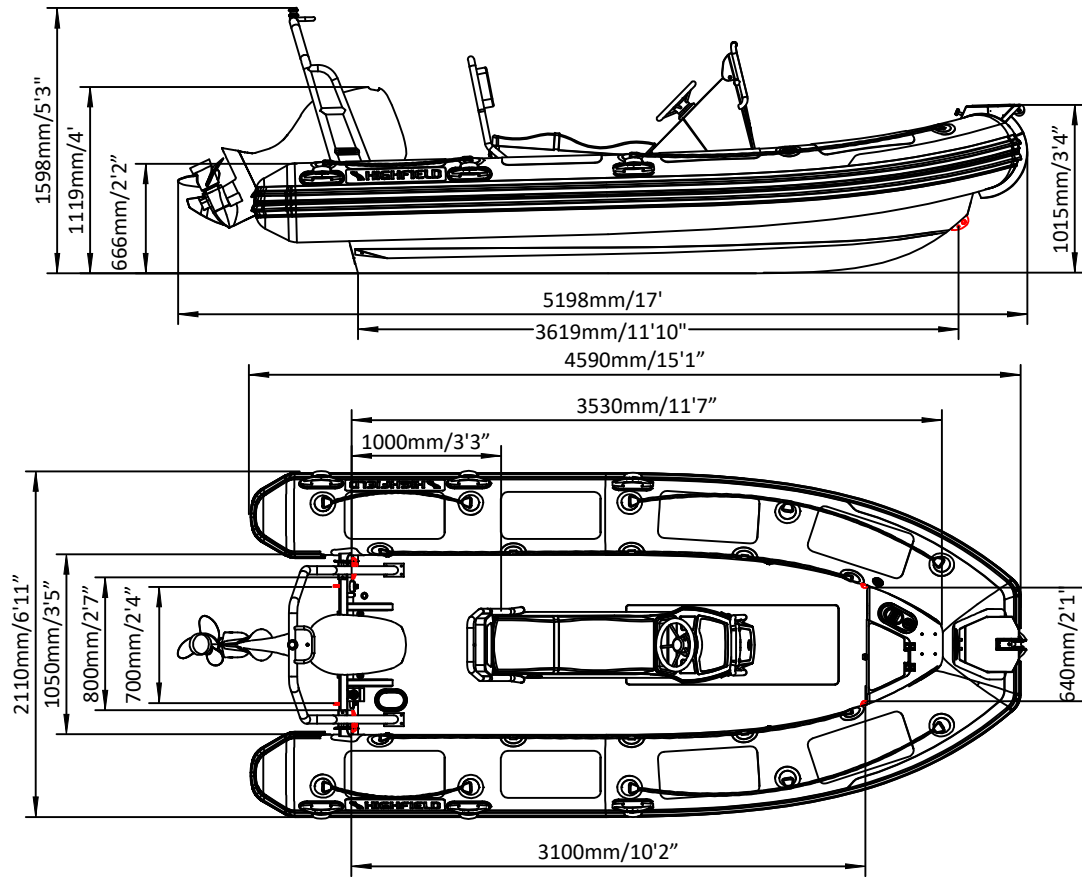


# PATROL 460BS

# SPECIFICATIONS



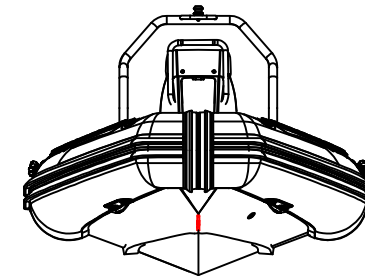
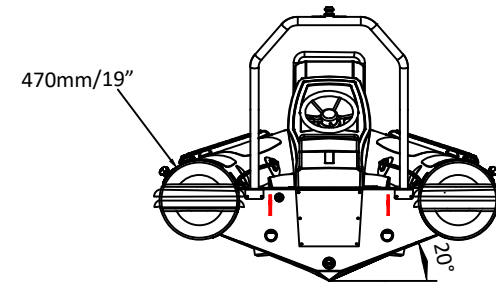
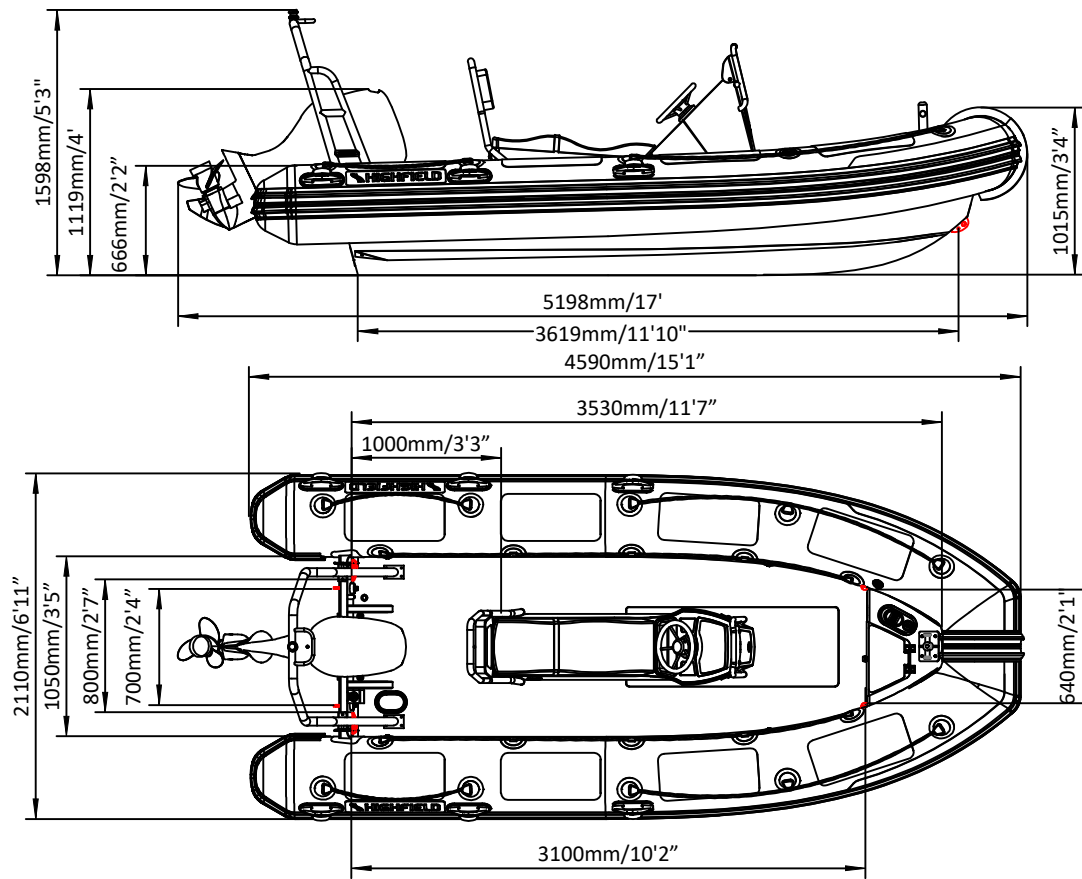
SPECIFICATIONS AND MAXIMUM CAPACITIES (Subject to change without notice. Tolerances: dimensions ±2.5%, weights ±5%)

MODEL	ISO 6185 PART	ISO 6185	Crew		Capacity			Outboard Engine				Sundeck		Tow post		Rollbar		Fuel tank Capacity		Wet Weight (Approximate) 80HP (59.68KW) +Fuel		AIR CHAMBERS	Pressure				
			KG	LB	#	KG	LB	Shaft	Max power	Max weight	KG	LB	KG	LB	KG	LB	KG	LB	L	GAL	KG		LB	PSI	BAR		
								KW	HP	KG	LB																
PA460BS	3	C	1040	2293	9	675	1488	L	59.68	80	185	408	290	639	/	/	19	41.88	11	25	55	14.5	515	1135	5	3.63	0.25

Boat weight includes: JC1200 console

# PATROL 460NBS

# SPECIFICATIONS



SPECIFICATIONS AND MAXIMUM CAPACITIES (Subject to change without notice. Tolerances: dimensions ±2.5%, weights ±5%)

MODEL	ISO 6185 PART	ISO 6185	Crew		Passengers			Outboard Engine				Sundeck		Tow post		Rollbar		Fuel tank Capacity		Wet Weight (Approximate) 80HP (59.68KW) +Fuel		AIR CHAMBERS	Pressure				
			KG	LB	#	KG	LB	Shaft	Max power		Max weight		KG	LB	KG	LB	KG	LB	L	GAL	KG		LB	PSI	BAR		
									KW	HP	KG	LB															
PA460NBS	3	C	1040	2293	9	675	1488	L	59.68	80	185	408	290	639	/	/	19	41.88	11	25	55	14.5	515	1135	5	3.63	0.25

Boat weight includes: JC1200 console