

# Nizpro Marine

## Yamaha 2.8L L4 DEC Offshore



## ECU Repower Instructions

# READ IN FULL BEFORE PROCEEDING

## Important Information

Installing the ECU Repower indicates your acceptance of the responsibility and liability associated with the fitment and use of this product. Please ensure the owner and drivers of the vessel are aware of their responsibilities and liabilities as indicated below.

**Thank you for purchasing this ECU Repower which has been designed and calibrated to improve engine power whilst also increasing fuel efficiency.**

**The owner and drivers of the enhanced vessel must be aware that fitment of an ECU Repower may affect:**

- The vessel's factory warranty.
- Insurance cover and associated liabilities.
- Compatibility with emission and seaworthy certification.
- The validity of a boat license for a vessel.
- The handling capability of the vessel due to increased engine power & torque characteristics.
- The longevity of the engine.

It is the owner's/driver's responsibility to accept any consequences and liabilities of using the ECU Repower and any subsequent effect it may have. Nizpro Marine shall not be liable and shall be 'Held Harmless' for any direct and/or indirect/consequential losses, costs, damages, expenses, injuries or liabilities whatsoever incurred by the owner/driver of the vessel or other parties arising from this ECU Repower, its installation and/or its operation.

It is recommended that engines have completed at least 10 hours and have been driven, serviced and maintained in accordance with the engine manufacturer's handbook.

An engine should be deemed reliable and have delivered all reasonable expectations in line with the engine manufacturer's specifications prior to fitting an ECU Repower.

No warranty shall apply where Nizpro Marine have determined improper fitment or handling, misuse in operation, neglect, or accident damage.

Engine modifications made prior to or in conjunction with the ECU Repower fitment may invalidate the Nizpro Marine limited warranty.

Any warranty claims must be made immediately & directly in writing to Nizpro Marine so that a determination can be made promptly. Involvement of a third party or an attempt to repair a perceived/actual fault may invalidate the warranty. To the extent of the law, the determination on any warranty claim & associated costs will be at the sole discretion of Nizpro marine.

**By installing the ECU Repower you acknowledge that all conditions pertaining to this product and its operation have been read, understood, and accepted.**

# YAMAHA 2.8L L4 OFFSHORE DEC

## ECU FLASHING INSTRUCTIONS

**\*\*WARNING\*\***

NIZPRO MARINE PERFORMANCE REPOWERS HAVE BEEN DESIGNED AND CALIBRATED TO RUN ON SPECIFIC MINIMUM FUEL OCTANES.

**FAILURE TO USE THE MINIMUM OCTANE GAS/FUEL WILL VOID ANY WARRANTY, AND MAY LEAD TO SEVERE ENGINE POWERHEAD DAMAGE.**

<b>F150/175 DEC</b>	NIZPRO 187 ECOPLUS	Min 87 Octane US / 91 AUS RON
<b>F150/175 DEC</b>	NIZPRO 197 FSR	Min 89 Octane US / 95-98 AUS RON
<b>F200 DEC</b>	NIZPRO 231 FSR	Min 89 Octane US / 95-98 AUS RON

## CONGRATULATIONS ON THE PURCHASE OF YOUR NIZPRO MARINE PERFORMANCE REPOWER!

To ensure there are no delays between the install of your Performance Repower and getting back out on the water, we recommend you setup your Woolich Racing account prior to the delivery of your DIY Kit hardware.

1. Create your Woolich Racing customer account by following the link below:

[Create new Woolich Racing Tuned account](#)

2. Once you have created and activated your Woolich account **you must email** [sales@nizpromarine.com](mailto:sales@nizpromarine.com)

with the following Woolich Racing account details:

- a) Customer name
- b) Email Address used for login
- c) Engine model ID from Yamaha ID plate: e.g. F150XCA

3. Once you have been notified of your account verification, please download, and install the Woolich Racing software from the link below

[www.woolichracing.com/tuned/](http://www.woolichracing.com/tuned/)

**You are now ready to install your Nizpro Marine Performance Repower in your ECU when your DIY KIT arrives!**

# FLASHING INSTRUCTIONS

**\*READ THESE INSTRUCTIONS ENTIRELY AND THOROUGHLY BEFORE COMMENCING  
INSTALLATION\***

**YOU MUST HAVE A STABLE INTERNET CONNECTION WHILST CARRYING OUT THE  
ECU FLASHING PROCEDURE.**

**MINIMUM CONTINUOUS POWER SUPPLY REQUIREMENT - 12.6V TO 13.2V**

1. Disconnect battery circuit from engine

Failure to do so may result in having to use Yamaha Diagnostic System to "re-marry" the ECU to the ignition control module. This can be completed by any Yamaha Dealer.

2. Remove engine cowl
3. Remove the ECU cover
4. Disconnect & remove the ECU
5. At your Windows computer open the Woolich Racing tuned software previously installed.

**Read Woolich account set-up above if you haven't already installed the Woolich Software**

6. **Connect** the **USB-M v3** to your computer using the **micro-USB cable** provided
7. Once plugged in the USB drivers will be installed automatically

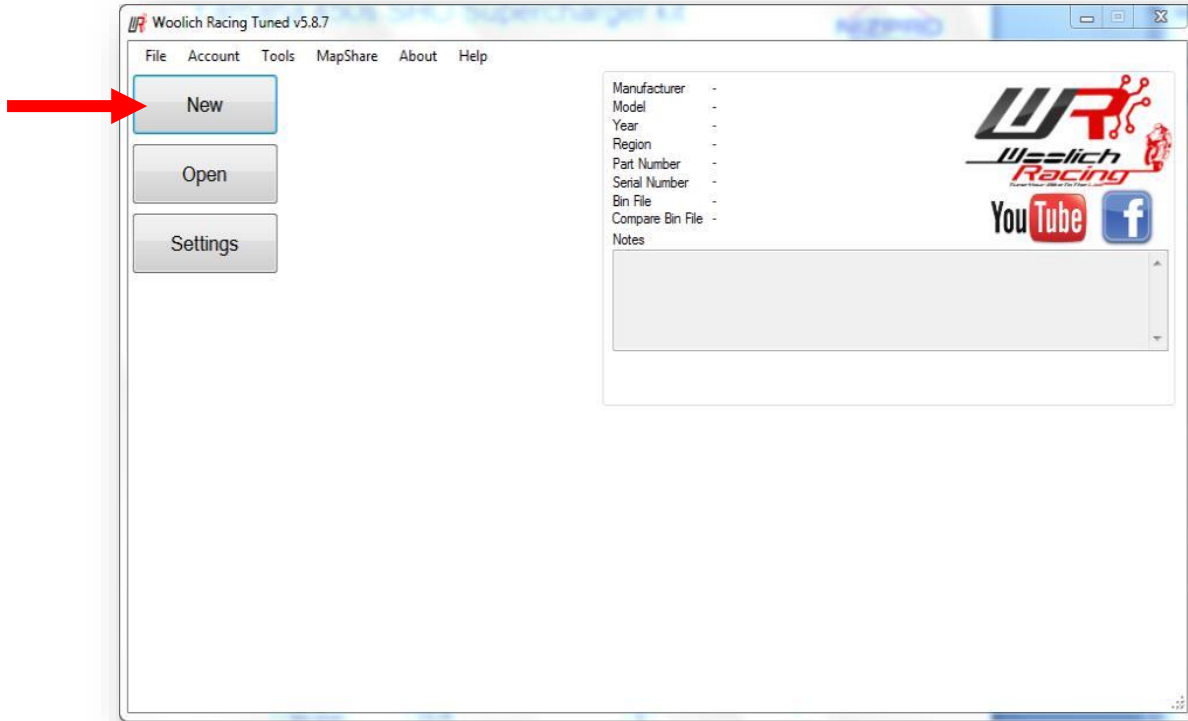
8. Move the switch on the USB-M v3 to the **left position** for **one minute**



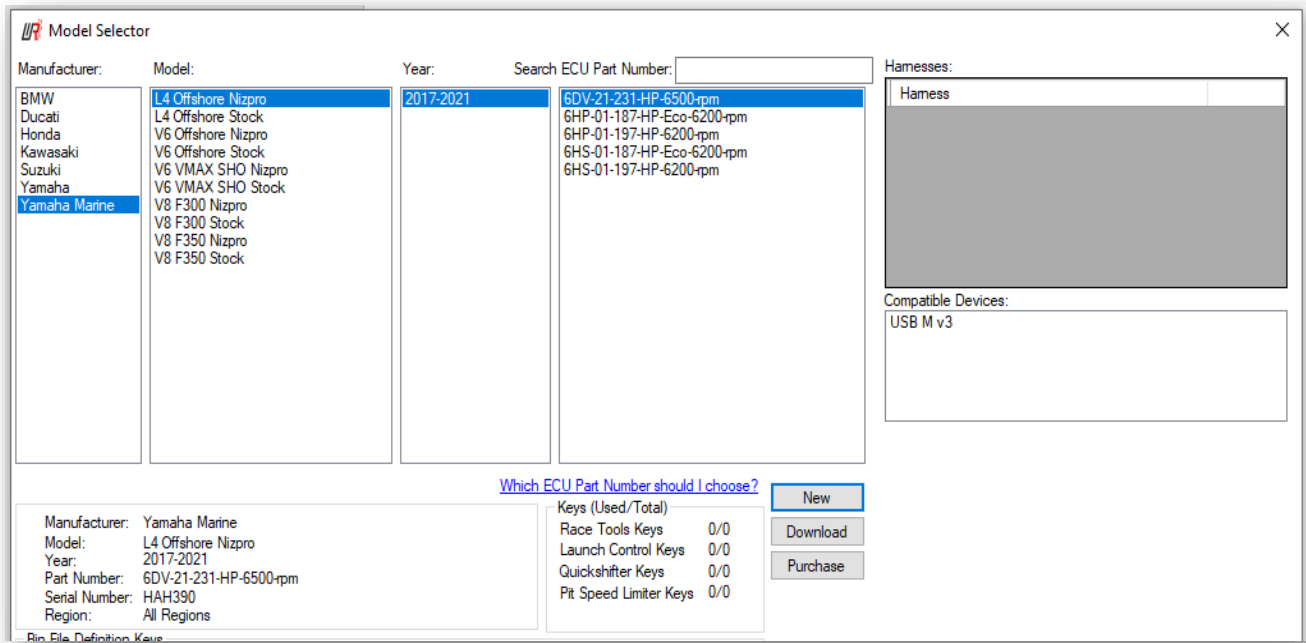
9. Then move the switch to the **right position** for **one minute**



10. **Open** the Woolich Racing Tuned software and then click on the “**NEW**” button



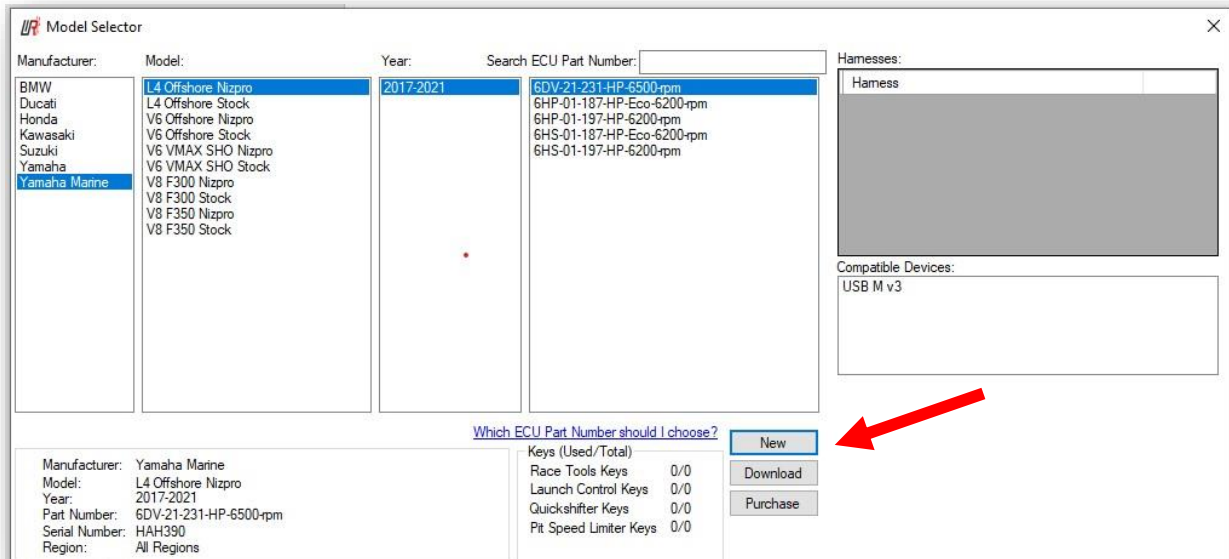
11. Select “**Yamaha Marine**” and then select “**L4 Offshore Nizpro**”



12. Select your **ECU part number, you wish to flash** from the list.

*EG- In this example, it is a 6DV-21 ECU, so you would select the 6DV-21 Repower file*

13. Click the "**NEW**" button in the bottom right corner

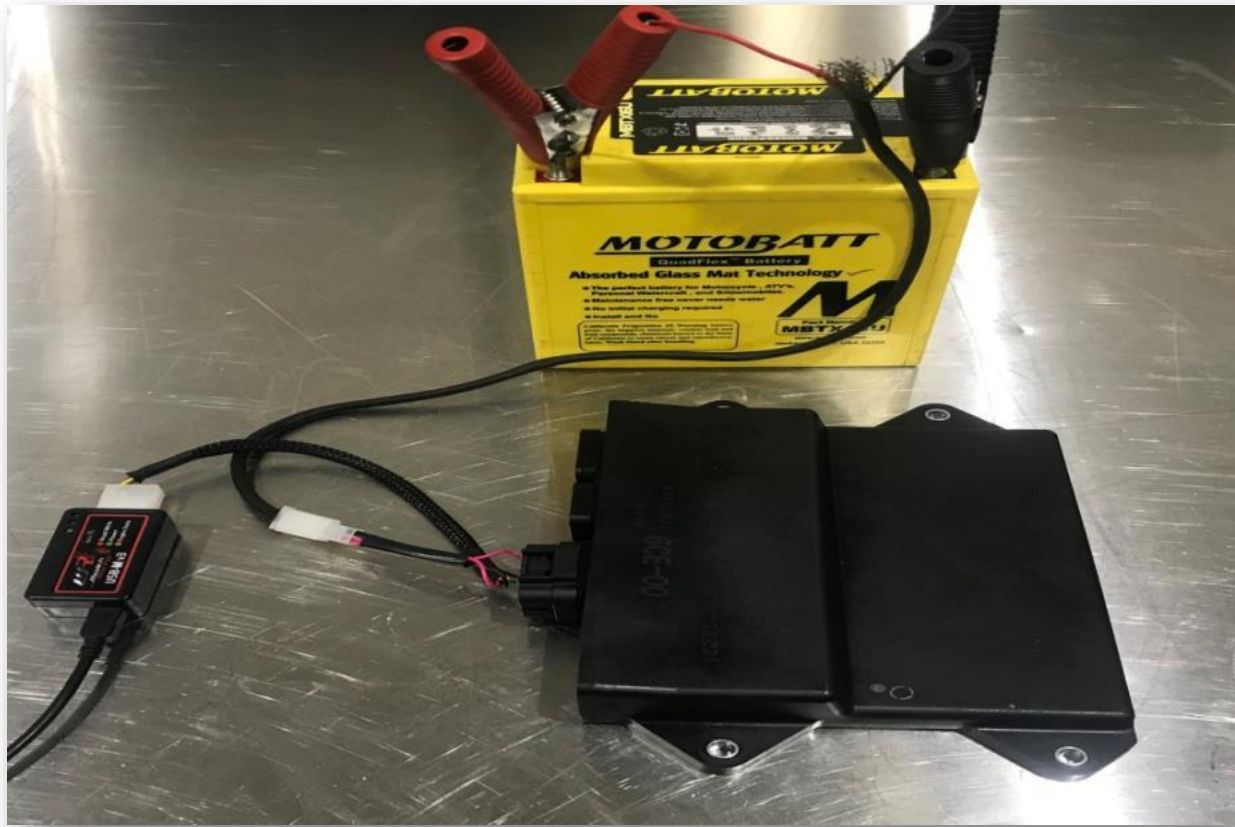


14. **Plug** the supplied **ECU flashing harness** into the **USB-M v3** and then the **ECU** you wish to flash.

15. **Connect the jumper leads** to a well charged 12v battery or a 12v constant power supply.

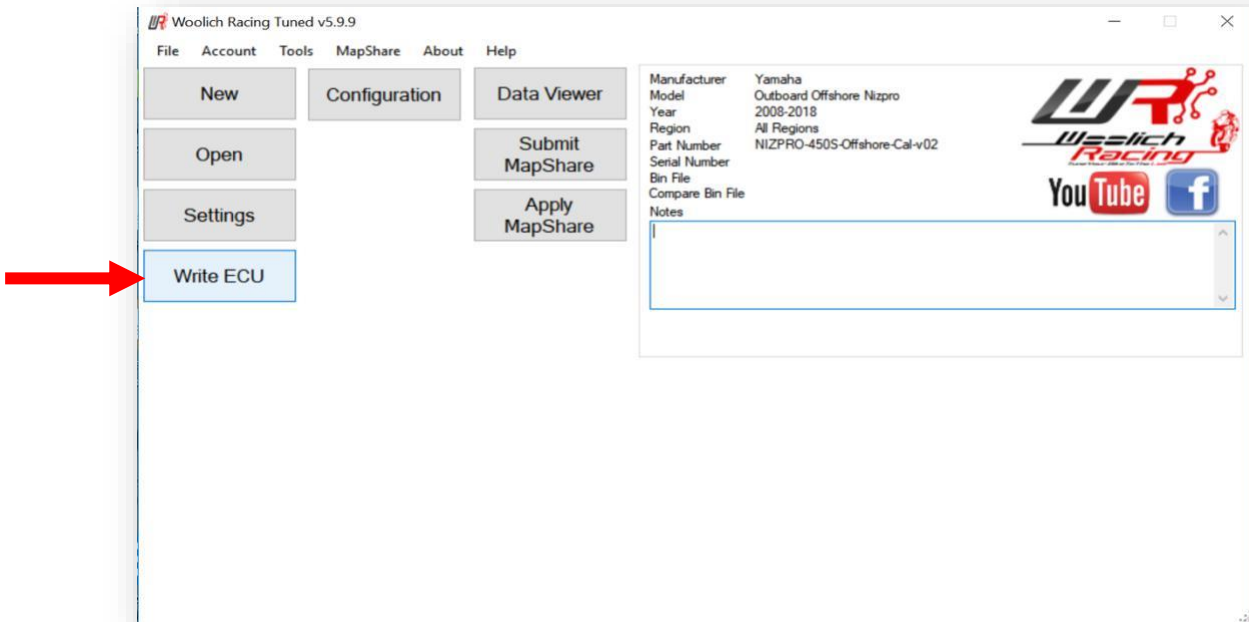
- a. **Red to positive terminal**
- b. **Black to negative terminal**





Please note Offshore and SHO ECU flashing harnesses are model specific and cannot be interchanged. Attempting to do so may result in damage to the connection pins of the ECU.

17. Click the **“WRITE ECU”** button

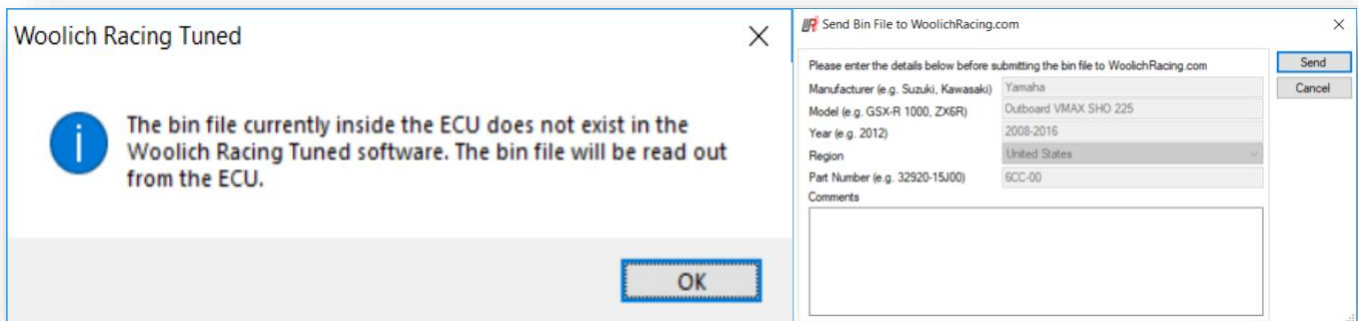


18. **Read the warnings** and **check the items listed on screen** and then click **“OK”**.

19. The flashing procedure will now commence, it will take approximately 5 minutes to flash the ECU with the new program.

20. If the ECU you are trying to program is **not in the Woolich racing database**, you will be prompted to **read the ECU** so we can add the factory ECU file into our database.

21. Simply **follow the prompts**, and then click **“WRITE ECU”** again



22. Once the **flashing procedure is complete, disconnect the ECU** from the flashing device and **close the Woolich Racing software.**
23. **Refit ECU** to the engine and reconnect all wiring plugs
24. **Reconnect battery** cable

---

**Congratulations, you have now successfully repowered your Yamaha outboard engine!**

Thank you for choosing a Nizpro Marine performance product.

If you are happy with the upgrade in performance, please leave a review on our Facebook or Instagram pages!

If you are unhappy with the product, please contact via email [sales@nizpromarine.com](mailto:sales@nizpromarine.com) or call 0011 63 9738 2134 so we can help correct any problems.

**PLEASE NOTE**

Technical Support **is only available via** email or phone.

We are not able to offer support over social media.

[sales@nizpromarine.com](mailto:sales@nizpromarine.com)

**0011 63 9738 2134**