



**PLEASE READ IN FULL BEFORE PROCEEDING**  
***Yes, this means you!***

### **IMPORTANT INFORMATION**

Installing the ECU Repower indicates your acceptance of the responsibility and liability associated with the fitment and use of this product. Please ensure the owner and drivers of the vessel are aware of their responsibilities and liabilities as indicated below.

---

Thank you for purchasing this ECU Repower which has been designed and calibrated to improve engine power whilst also increasing fuel efficiency.

**The owner and drivers of the enhanced vessel must be aware that fitment of an ECU Repower may affect:**

- The vessel's factory warranty.
- Insurance cover and associated liabilities.
- Compatibility with emission and seaworthy certification.
- The validity of a boat license for a vessel.
- The handling capability of the vessel due to increased engine power & torque characteristics.
- The longevity of the engine.

**It is the owner's/driver's responsibility to accept any consequences and liabilities of using the ECU Repower and any subsequent effect it may have.**

Nizpro Marine shall not be liable and shall be 'Held Harmless' for any direct and/or indirect/consequential losses, costs, damages, expenses, injuries, or liabilities whatsoever incurred by the owner/driver of the vessel or other parties arising from this ECU Repower, its installation and/or its operation.

1. It is recommended that engines have completed at least 10 hours and have been driven, serviced, and maintained in accordance with the engine manufacturer's handbook.
2. An engine should be deemed reliable and have delivered all reasonable expectations in line with the engine manufacturer's specifications prior to fitting an ECU Repower.
3. No warranty shall apply where Nizpro Marine have determined improper fitment or handling, misuse in operation, neglect, or accident damage.
4. Engine modifications made prior to or in conjunction with the ECU Repower fitment may invalidate the Nizpro Marine limited warranty.
5. Any warranty claims must be made immediately & directly in writing to Nizpro Marine so that a determination can be made promptly. Involvement of a third party or an attempt to repair a perceived/actual fault may invalidate the warranty. To the extent of the law, the determination on any warranty claim & associated costs will be at the sole discretion of Nizpro marine.
6. By installing the ECU Repower you acknowledge that all conditions pertaining to this product and its operation have been read, understood, and accepted.

# YAMAHA 2.8L L4 VMAX SHO ECU FLASHING INSTRUCTIONS



**WARNING**



**NIZPRO MARINE PERFORMANCE REPOWERS  
HAVE BEEN DESIGNED & CALIBRATED TO RUN ON SPECIFIC  
MINIMUM FUEL OCTANES.**

**FAILURE TO USE THE MINIMUM OCTANE GAS/FUEL  
WILL VOID ANY WARRANTY, AND MAY LEAD TO  
SEVERE ENGINE POWERHEAD DAMAGE.**

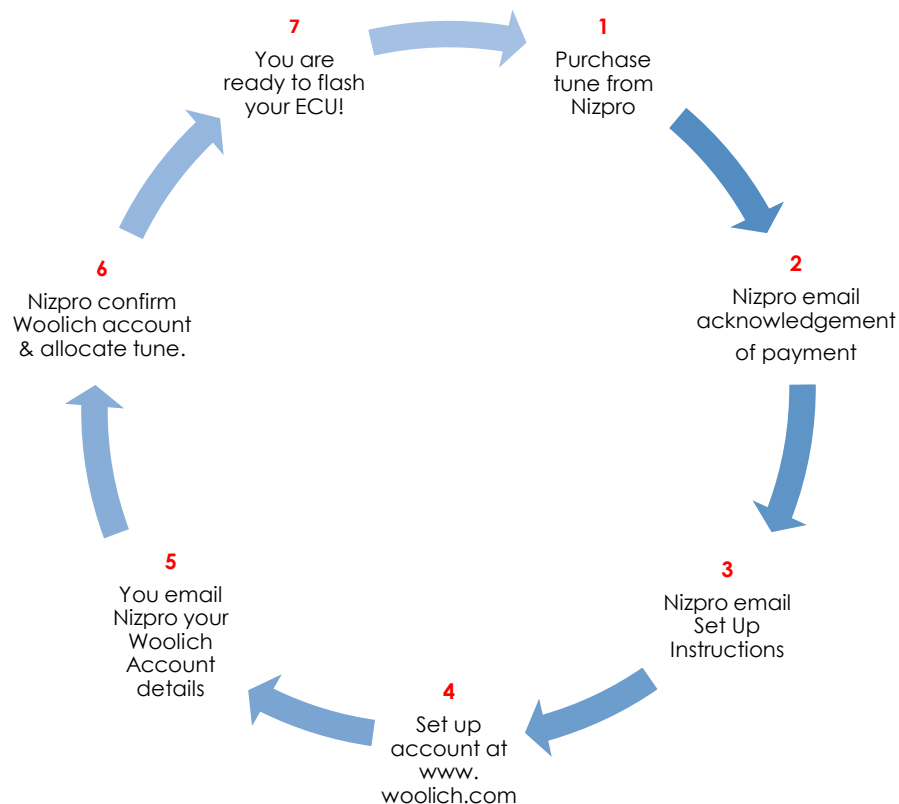
MODELS	NIZPRO Repower	Minimum Fuel Octane
VF150 LA/XA	NIZPRO 231 FSR	Min 89 Octane US / 95-98 AUS RON
VF175 LA/XA	NIZPRO 231 FSR	Min 89 Octane US / 95-98 AUS RON

# CONGRATULATIONS ON THE PURCHASE OF YOUR NIZPRO MARINE PERFORMANCE REPOWER!

To ensure there are no delays between the install of your Performance Repower and getting back out on the water, we recommend you setup your Woolich Racing account prior to the delivery of your DIY Kit hardware.

1. Create your Woolich Racing customer account by following the link - [Create new Woolich Racing Tuned Account](#)
2. **Once you have created and activated your Woolich account, you must**
  - a. Email [sales@nizpromarine.com](mailto:sales@nizpromarine.com) with the following Woolich Racing account details:
    - b. Your Name
    - c. Email Address used to create your Woolich Account
    - d. Engine model ID from Yamaha ID plate: e.g. VF150 LA
3. Wait for account verification from Nizpro Marine – we will email you
4. Please download, and install the Woolich Racing software from the link below [www.woolichracing.com/tuned/](http://www.woolichracing.com/tuned/)

You are now ready to install your Nizpro Marine Performance Repower in your ECU when your DIY KIT arrives!



# FLASHING INSTRUCTIONS

**\*READ THESE INSTRUCTIONS ENTIRELY AND  
THOROUGHLY BEFORE COMMENCING  
INSTALLATION\***

**IF YOU MISS 1 STEP IN THE PROCEDURE  
THE TUNE WILL NOT INSTALL,  
OR ECU FAILURE CAN OCCUR**



**YOU MUST HAVE A STABLE INTERNET CONNECTION  
WHILST CARRYING OUT THE ECU FLASHING PROCEDURE.**



**MINIMUM CONTINUOUS POWER SUPPLY REQUIREMENT  
- 12.6V TO 13.2V**



# ECU TYPES

## 2016 or Older

If your engine model is **2016 or older**, you will have a **3 Plug ECU** and will flash the ECU using the **3-plug YBH-22 harness** pictured with one plug in each connector.



1. LEFT = GREEN 2. MIDDLE = YELLOW 3. RIGHT = RED/BLACK

## 2017 or Newer

If your engine model is **2017 or newer**, you will have a **2-Plug ECU** and will flash using the **single plug YBH-99 harness** pictured below using the **right-side connector**.



## FLASHING

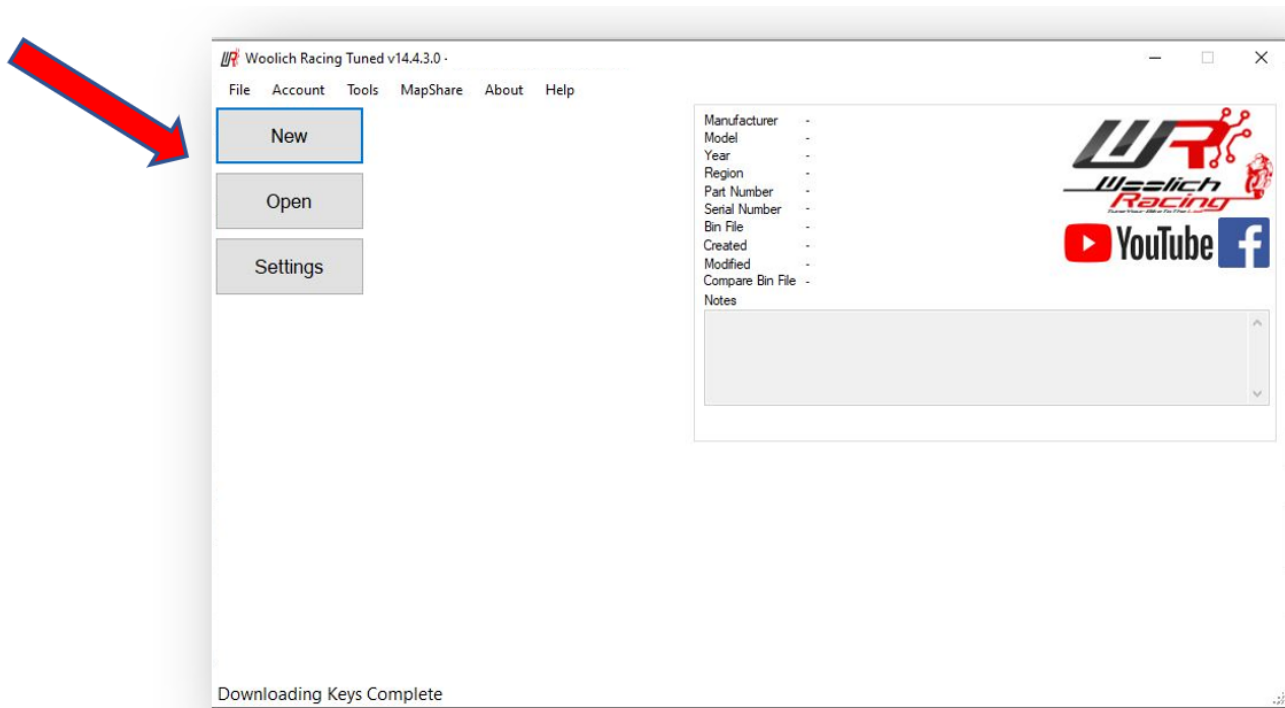
1. Disconnect battery circuit from engine
2. Remove engine cowl
3. Remove the ECU cover
4. Disconnect & remove the ECU
5. At your **Windows** computer, open the Woolich Racing tuned software previously installed (Not APPLE IOS compatible)
6. Read Woolich account set-up (above) if you haven't already installed the Woolich Software
7. Connect the Woolich USB-M v3 to your computer using the micro-USB cable provided
8. Once plugged in, the USB drivers will be installed automatically
9. Move the switch on the USB-M v3 to the **left** position for **one minute**



10. Then move the switch to the **right** position for **one minute**



11. Open the Woolich Racing Tuned software and then click on the "NEW" button



12. Select "Yamaha Marine" and then select "L4 SHO Nizpro"

13. Select the Performance Repower ECU part number that matches your ECU from the list.

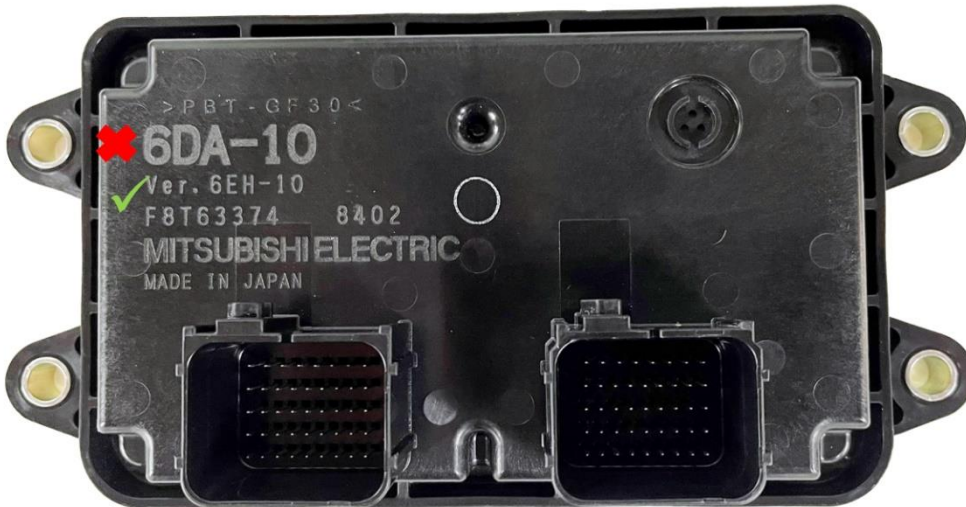
**FOR EXAMPLE** - If your ECU is a 6EH-02, select the matching NIZPRO 6EH-02 Repower file.



**Model Selector**

Manufacturer:	Model:	Year:	Search ECU Part Number:
BMW Ducati Honda Kawasaki Suzuki Yamaha <b>Yamaha Marine</b>	Jetski Stock L4 Offshore Nizpro L4 Offshore Stock <b>L4 VMAX SHO Nizpro</b> L4 VMAX SHO Stock Nizpro Development Nizpro Xtreme V6 Offshore Nizpro V6 Offshore Stock V6 VMAX SHO Nizpro V6 VMAX SHO Stock V8 F300 Nizpro V8 F300 Stock V8 F350 Nizpro V8 F350 Stock	2012-2022	6EH-01 VF150 231HP 6500rpm <b>6EH-02 VF150 231HP 6500rpm</b> 6EH-10 VF150 231HP 6500rpm 6EH-11 VF150 231HP 6500rpm 6FH-00 VF175 231HP 6500rpm 6FH-10 VF175 231HP 6500rpm 6FH-11 VF175 231HP 6500rpm

14. If there is a **Ver: number** underneath the main ECU number, **you MUST select the VER: number**, NOT the bigger, main number.

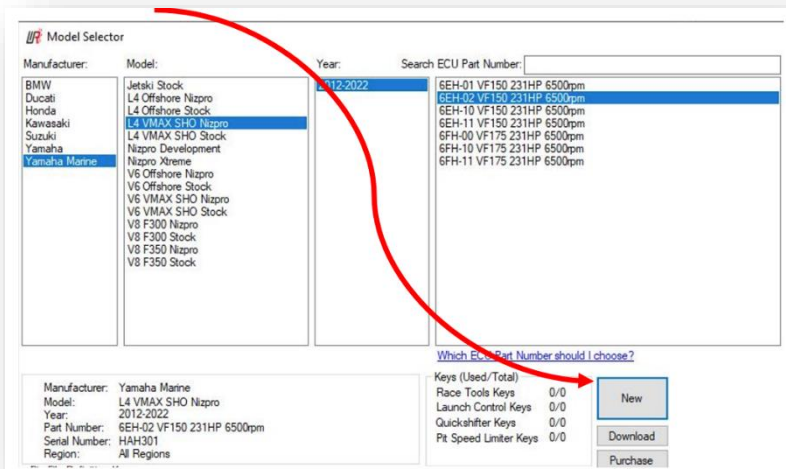


**WARNING**

Be extremely gentle when connecting and disconnecting

YBH-22 Connector 1 with the solitary Green Wire, and Connector 2 with the solitary yellow wire, as they are delicate.

15. Click the “NEW” button in the bottom right corner



16. Plug the ECU flashing harness into the USB-Mv3 box and the supplied power cable and connect the ECU.

17. Connect the jumper leads to a well-charged 12v battery or a 12v constant power supply.

- You will usually require **12.6 to 12.8V** to flash the ECU.
- If you flash you ECU outside of this range, the flash may not download accurately
- THIS MUST BE DONE LAST**

## Connect



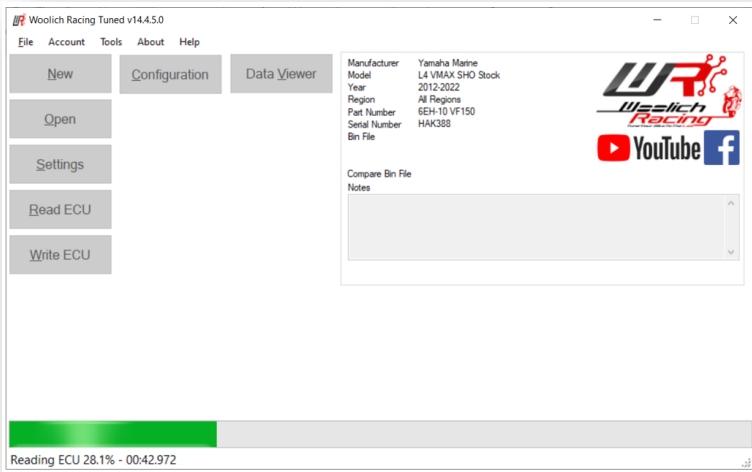
- Red to positive terminal
- Black to negative terminal

**DO not attempt to flash an ECU other than the supported models for your harness.**

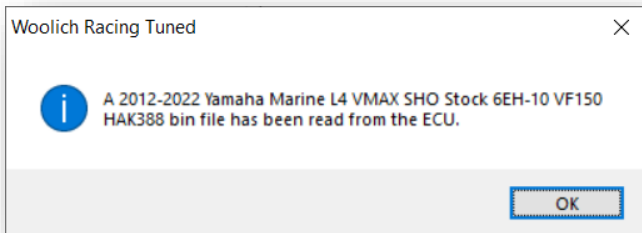
**ECU flashing harnesses are ECU model specific and cannot be interchanged.**

**Attempting to do so will result in permanent damage to the ECU.**

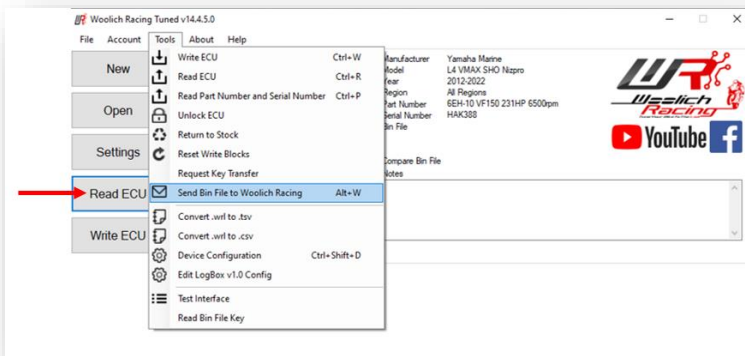
17. Now click the “**READ ECU**” button. This will confirm exactly what file is in the ECU.



18. When the read is complete, you will see the confirmation of the tune currently in the ECU.



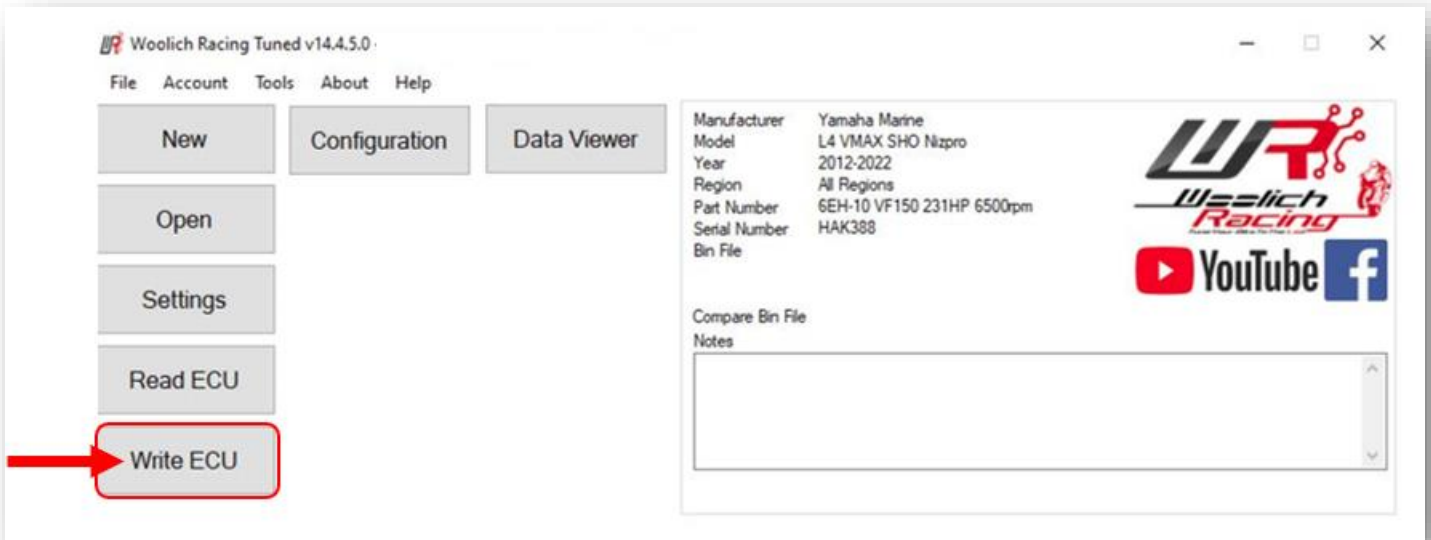
19. Now click on the **TOOLS** tab, scroll down to **Send Bin File to Woolich Racing** and click.



20. Complete the missing fields on the form. In the section for Support Ticket #, please type in your Woolich Username email and the ECU file.

For instance, [John.Smith@gmail.com](mailto:John.Smith@gmail.com) 6EH-10.

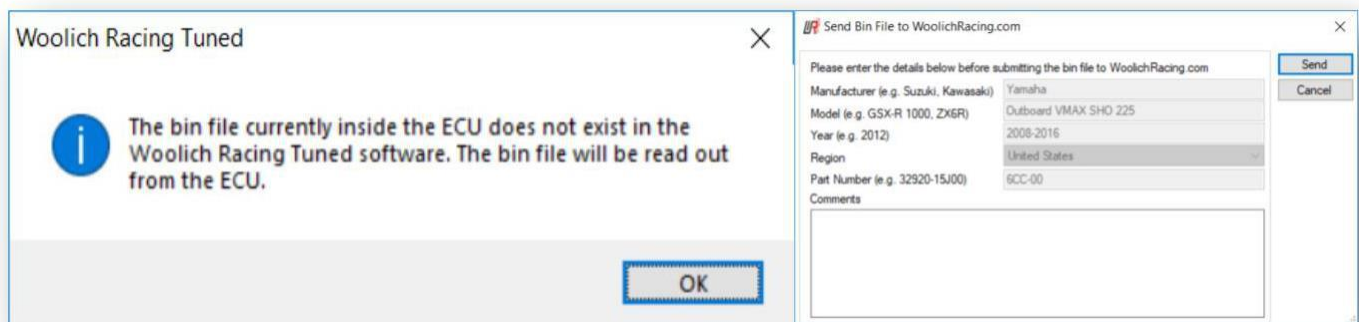
21. After reading the ECU and sending the file to Woolich, please click the **"WRITE ECU"** button



22. Read the warnings and check the items listed on screen and then click **"OK"**.

23. The flashing procedure will now commence, it will take approximately 4-5 minutes to flash the ECU with the new Performance Repower program.

24. If the ECU you are trying to program is **not in the Woolich racing database**, you will be prompted to read the ECU so we can add the factory ECU file into our database.



25. Simply **follow the prompts on the screen,** and then click "**WRITE ECU**" again
26. Once the **flashing procedure is complete,** disconnect the ECU from the flashing device and close the Woolich Racing software.
27. Refit ECU to the engine and reconnect all wiring plugs
28. Reconnect battery cable. Start and test run.

---

## Congratulations, you have now successfully repowered your Yamaha outboard engine!

**Thank you for choosing a Nizpro Marine performance product.**

If you are happy with the Nizpro Repower, please leave a review on our Facebook or Instagram pages!

If you are unhappy with the product, please contact via email [sales@nizpromarine.com](mailto:sales@nizpromarine.com) or call 0011 63 9738 2134 so we can help assist.

---

### PLEASE NOTE

- **Technical Support** is only available via email, phone or Team Viewer
- We are not able to offer support over social media.
- [sales@nizpromarine.com](mailto:sales@nizpromarine.com)
- 0011 63 9738 2134

**We are open Monday – Friday 8.30am – 4.30pm**

[Current time in Melbourne, Australia](#)