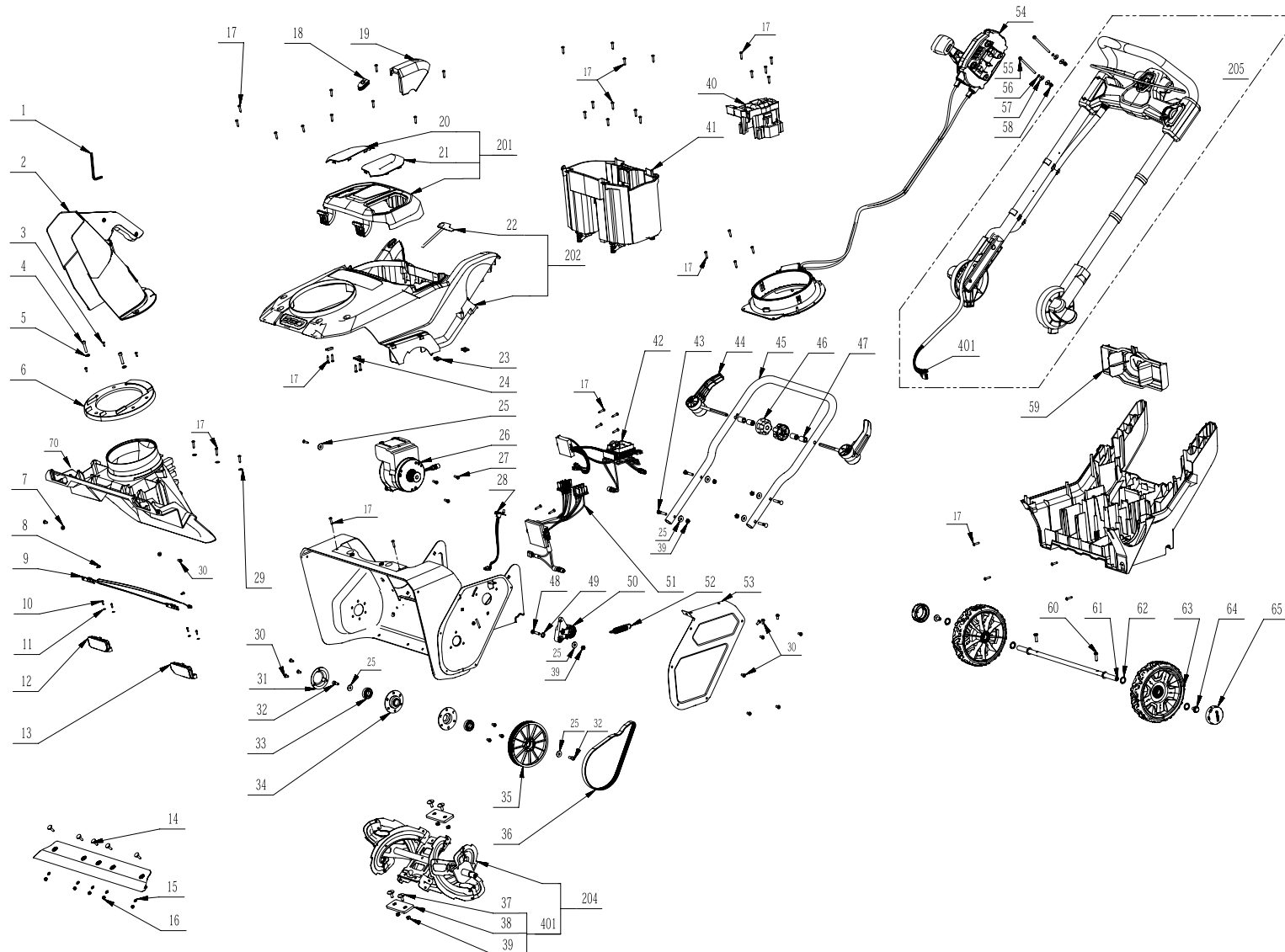




Product Description: Snow Blower  
Model Number: SNT2110  
Body Number: 0760063001\_S  
Version: A  
Issue Date: 2023/10/10



## Service Part List\_SNT2110\_Vervion A

| No. | Product Model# | Part Number | Description                   | Qty |
|-----|----------------|-------------|-------------------------------|-----|
| 1   | SNT2110        | 5680028002  | Hexagon Wrench                | 1   |
| 2   | SNT2110        | 2825277001  | Chute ASSY                    | 1   |
| 3   | SNT2110        | 5610082002  | Tapping Screw                 | 3   |
| 4   | SNT2110        | 5620553001  | Hexagon Socket Screw          | 2   |
| 5   | SNT2110        | 5650016002  | Plain Washer                  | 2   |
| 6   | SNT2110        | 3128438001  | Cover                         | 1   |
| 7   | SNT2110        | 5630004001  | Hexagon Nut With Flange       | 2   |
| 8   | SNT2110        | 5610021004  | Tapping Screw                 | 2   |
| 9   | SNT2110        | 2830168001  | Electric Assembly             | 1   |
| 10  | SNT2110        | 5610017005  | Tapping Screw                 | 4   |
| 11  | SNT2110        | 5650001002  | Plain Washer                  | 4   |
| 12  | SNT2110        | 2826203001  | Left Transparent Cap ASSY     | 1   |
| 13  | SNT2110        | 2826204001  | Right Transparent Cap ASSY    | 1   |
| 14  | SNT2110        | 5640255001  | Square Neck Bolt              | 5   |
| 15  | SNT2110        | 3660653001  | Disc Spring                   | 5   |
| 16  | SNT2110        | 5630006002  | Prevailing Torque Hexagon Nut | 5   |
| 17  | SNT2110        | 5620157006  | Hexagon Socket Screw          | 50  |
| 18  | SNT2110        | 3128636001  | Wire Hold                     | 1   |
| 19  | SNT2110        | 3128459001  | Cover                         | 1   |
| 20  | SNT2110        | 3128469001  | Transparent Guard             | 1   |
| 21  | SNT2110        | 3128470001  | Transparent Guard             | 1   |
| 22  | SNT2110        | 4870558001  | Film Switch                   | 1   |
| 23  | SNT2110        | 5630297001  | Floating Nut                  | 2   |
| 24  | SNT2110        | 3700367001  | Cord Anchorage                | 2   |
| 25  | SNT2110        | 5650017010  | Plain Washer                  | 8   |
| 26  | SNT2110        | 2824601002  | Motor ASSY                    | 1   |
| 27  | SNT2110        | 5620019001  | Hexagon Socket Screw          | 3   |
| 28  | SNT2110        | 2830184001  | Electric Assembly             | 1   |
| 29  | SNT2110        | 5650278002  | Washer                        | 3   |
| 30  | SNT2110        | 5620559001  | Hexagon Socket Screw          | 18  |
| 31  | SNT2110        | 3706076001  | Bearing Clamp                 | 1   |
| 32  | SNT2110        | 5620340003  | Hexagon Socket Screw          | 2   |

| No. | Product Model# | Part Number | Description                   | Qty |
|-----|----------------|-------------|-------------------------------|-----|
| 33  | SNT2110        | 5700018023  | Ball Bearing                  | 2   |
| 34  | SNT2110        | 3706077001  | Bearing Holder                | 2   |
| 35  | SNT2110        | 2824603002  | Big Belt Pulley ASSY          | 1   |
| 36  | SNT2110        | 3800118001  | V-Belt                        | 1   |
| 37  | SNT2110        | 5620582001  | Screw                         | 4   |
| 38  | SNT2110        | 2827369002  | Blade Set                     | 2   |
| 39  | SNT2110        | 5630015005  | Prevailing Torque Hexagon Nut | 9   |
| 40  | SNT2110        | 2824683002  | Support ASSY                  | 1   |
| 41  | SNT2110        | 2824689002  | Battery Box ASSY              | 1   |
| 42  | SNT2110        | 2830188001  | Electric Assembly             | 1   |
| 43  | SNT2110        | 5640168001  | Square Neck Bolt              | 4   |
| 44  | SNT2110        | 2824685002  | Adjusting Handle Set          | 2   |
| 45  | SNT2110        | 3706070001  | Steel Tube                    | 1   |
| 46  | SNT2110        | 3402804001  | Knob                          | 2   |
| 47  | SNT2110        | 3520951001  | Bush                          | 4   |
| 48  | SNT2110        | 5640018003  | Square Neck Bolt              | 1   |
| 49  | SNT2110        | 5650211001  | Gasket                        | 1   |
| 50  | SNT2110        | 2824604002  | Lever ASSY                    | 1   |
| 51  | SNT2110        | 2830169001  | Electric Assembly             | 1   |
| 52  | SNT2110        | 3660637001  | Tension Spring                | 1   |
| 53  | SNT2110        | 3706065001  | Belt Cover                    | 1   |
| 54  | SNT2110        | 2824687002  | Adjusting Handle Set          | 1   |
| 55  | SNT2110        | 5620554001  | Hexagon Socket Screw          | 2   |
| 56  | SNT2110        | 5650015012  | Spring Washer                 | 2   |
| 57  | SNT2110        | 5650012006  | Plain Washer                  | 4   |
| 58  | SNT2110        | 5630296001  | Nut                           | 2   |
| 59  | SNT2110        | 3128464001  | Rear Cover                    | 1   |
| 60  | SNT2110        | 5640007005  | Hexagon Head Bolt             | 2   |
| 61  | SNT2110        | 2824537001  | Shaft Assembly                | 1   |
| 62  | SNT2110        | 5650332001  | Washer                        | 4   |
| 63  | SNT2110        | 2824600002  | Wheel Assembly                | 2   |
| 64  | SNT2110        | 5620358001  | Flange Screw                  | 2   |
| 65  | SNT2110        | 3126769001  | Hubcap                        | 2   |
| 70  | SNT2110        | 3128425002  | Middle Housing                | 1   |

| No.     | Product Model# | Part Number | Description        | Qty |
|---------|----------------|-------------|--------------------|-----|
| 201     | SNT2110        | 2826214001  | Battery Cover ASSY | 1   |
| 202     | SNT2110        | 2826236001  | Upper Housing ASSY | 1   |
| 204     | SNT2110        | 2827386002  | Rotating Blade Set | 1   |
| 205     | SNT2110        | 2824688004  | Handle ASSY        | 1   |
| 204-401 | SNT2110        | 2827379002  | Blade Set          | 1   |
| 205-401 | SNT2110        | 2830174002  | Electric Assembly  | 1   |