

# Steerable Series Spreaders

Our directional spreader offers excellent manoeuvrability and control on all types of terrain. Its agility results in less ground impact when turning. Its exclusive hydraulic power-steering and superior quality suspension provide more resistance to obstacles.

The walls of the reservoir are made of high quality steel for long life expectancy. Baffles are installed inside the reservoir providing excellent liquid manure stability. As all of our line of equipment, our spreaders are coated with a layer of Epoxy primer and 2 layers of Urethane paint making them resistant to extreme conditions. Because we believe that a good product must be looked after, we have integrated several easily accessible lubricating points as well as openings for cleaning on top of the reservoir.

We offer also a selection of tires and a choice of brakes to meet all your needs. Many other options are offered with the goal of easing your daily tasks. Ask about them.



Basic equipment provided with the steerable spreader:

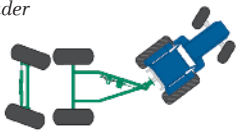
- Up-market hydraulic suspension
- Power steering system unique to GEA Houle
- Bearing housing and impeller
- Heavy-duty discharge pipe with anti-syphon
- Fill opening with protection grid
- Front fill indicator
- Drain system
- Swivel hitch
- Braided hydraulic hoses
- Integrated ladder
- 8" access door on top
- Hydraulic hose support
- Anti-skid strip on top of spreader
- Jack
- Wheel wrench

## Power Steering System

The GEA Houle power steering patented system is unique in that it matches the turning angle of the tractor. The operator can disengage the power steering system to improve stability while traveling on the road. When disengaged, the wheels are maintained parallel to the reservoir by means of heavy-duty compression springs.

- Ensures a safer operation
- Reduces damage to vegetation and eliminate strain on spreader hubs, axles and chassis
- Is protected by a spring-loaded mechanism

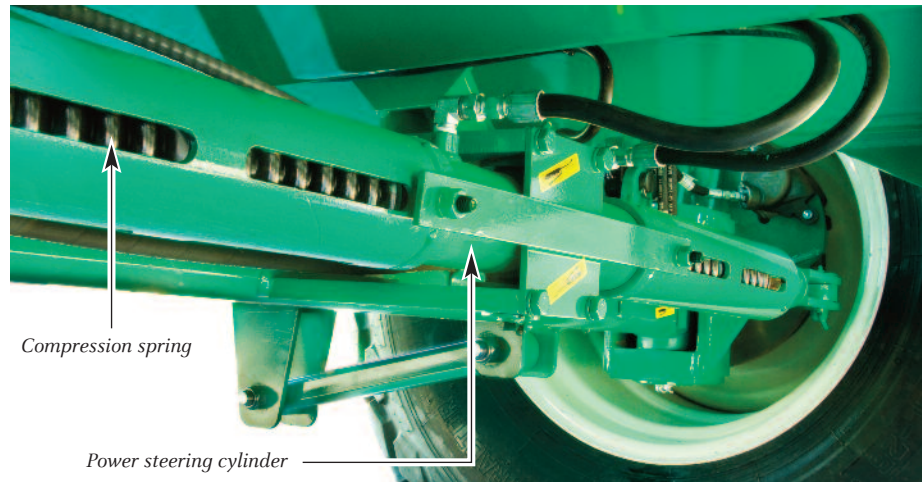
*EL48-4D spreader*



*EL48-6D spreader*



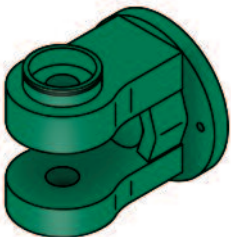
*EL48-8D spreader*



## Heavy-Duty Power Steering Swivel Hitch

Our heavy-duty power steering swivel hitch adapts to different types of tractor tow bar. Available with a 3" or 3 1/2" pivot shaft.

*Double hitch*



*Single plate hitch*



## Hydraulic Suspension

The 12" stroke suspension allows for smoother travel over irregular terrain and reduces stress to the reservoir.

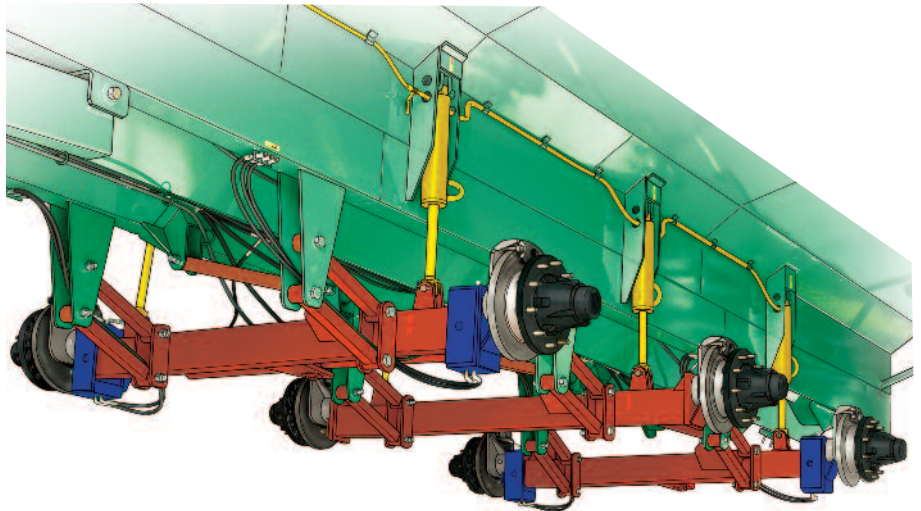
### *Suspension Design*

*Suspension cylinders are located close to the centre of gravity of the reservoir. When the spreader is full, this unique design reduces excessive load variations on the draw bar and improves the tractor traction.*



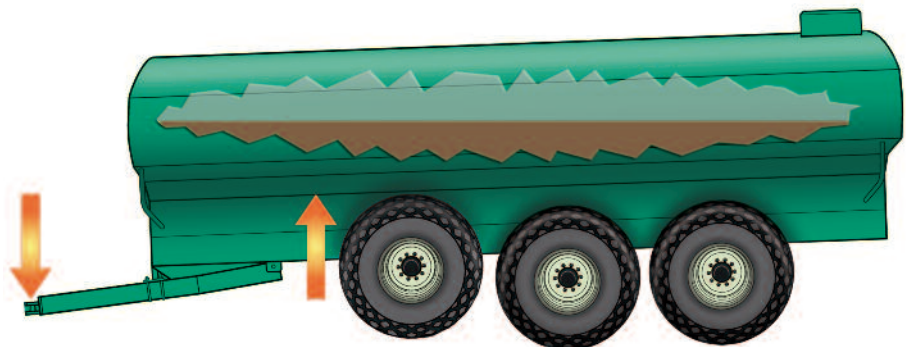
Rigid transaxles, in combination with suspension cylinders mounted close to the wheels, reduce the "rebound effect" commonly experienced on rough roads.

- Axles are attached under the tank by 4 sway bars and 1 cross member mounted on rubber bushings.
- Suspension cylinders provide equal weight distribution on each wheel.
- The steerable axle(s) chromed king pins are mounted with greasable brass bushings. Bolted axles are easy to remove.



## Optional Weight Transfer System

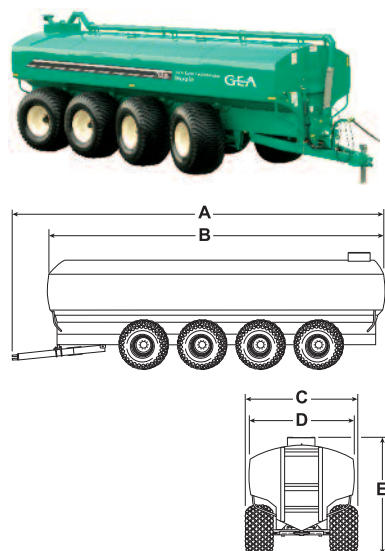
The weight transfer system is operated on demand by the operator to increase the tractor traction as needed.





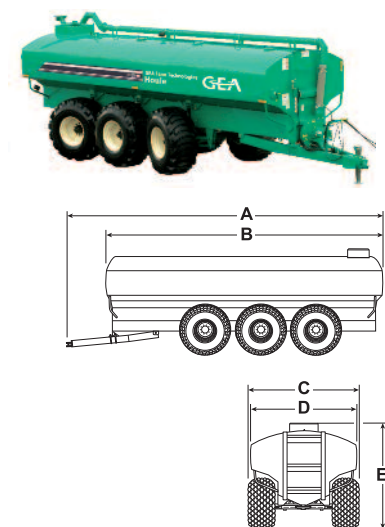
# Steerable Series Spreaders - Specifications

## EL48-8D Spreaders



Model capacity	Tires	Length (feet)		Width (inches)		Height (inches) "E"	Weight (lbs)
		"A" overall	"B" tank	"C" overall	"D" tank		
<b>EL48-8D-7400</b> 8,900 US gal. 33 650 litres	23.1 X 26	36	30	113	99	125	23 104
	28L X 26	36	30	123	99	126	24 903
	725/65 X 26	36	30	123	99	126	25 362
	850/50 X 30.5	36	30	137	99	129	26 173
	850/50 X 32	36	30	137	99	129	26 461
<b>EL48-8D-7900</b> 9,500 US gal. 35 900 litres	23.1 X 26	38	32	113	99	125	23 620
	28L X 26	38	32	123	99	126	25 419
	725/65 X 26	38	32	123	99	126	25 878
	850/50 X 30.5	38	32	137	99	129	26 689
	850/50 X 32	38	32	138½	99	129	26 977

## EL48-6D Spreaders



Model capacity	Tires	Length (feet)		Width (inches)		Height (inches) "E"	Weight (lbs)
		"A" overall	"B" tank	"C" overall	"D" tank		
<b>EL48-6D-3600</b> 4,300 US gal. 16 350 litres	18.4 X 26	24	18	109	97	113	13 845
	23.1 X 26	24	18	113	97	114	14 467
	28L X 26	24	18	123	97	115	15 816
	725/65 X 26	24	18	123	97	115	16 160
<b>EL48-6D-4000</b> 4,800 US gal. 18 200 litres	18.4 X 26	26	20	109	97	113	14 273
	23.1 X 26	26	20	113	97	114	14 894
	28L X 26	26	20	123	97	115	16 244
	725/65 X 26	26	20	123	97	115	16 588
<b>EL48-6D-4350</b> 5,250 US gal. 19 750 litres	23.1 X 26	26	20	113	98	119	15 853
	28L X 26	26	20	123	98	120	17 203
	725/65 X 26	26	20	118	98	120	17 547
<b>EL48-6D-4800</b> 5,800 US gal. 21 800 litres	23.1 X 26	28	22	113	98	119	16 352
	28L X 26	28	22	123	98	120	17 701
	725/65 X 26	28	22	123	98	120	18 045
	850/50 X 30.5	28	22	137	98	123	18 653
	850/50 X 32	28	22	138½	98	123	18 869
<b>EL48-6D-5250</b> 6,300 US gal. 23 850 litres	23.1 X 26	30	24	113	98	119	17 002
	28L X 26	30	24	123	98	120	18 351
	725/65 X 26	30	24	123	98	120	18 034
	850/50 X 30.5	30	24	137	98	123	19 304
	850/50 X 32	30	24	138½	98	123	19 520
<b>EL48-6D-6100</b> 7,300 US gal. 27 750 litres	23.1 X 26	34	28	113	98	119	18 263
	28L X 26	34	28	123	98	120	19 612
	725/65 X 26	34	28	123	98	120	19 956
	850/50 X 30.5	34	28	137	98	123	20 565
	850/50 X 32	34	28	138½	98	123	20 781

# Tool Bars Compatibility

Tool Bar Spreader	38-foot Tool Bar with three Deflectors	Low Spreading Tool Bar with Deflectors	Tool Bar with Flex Drop Hoses	22" Concave Disc Incorporator	16" Disc Cultivator	S-Tine Cultivator	Sweep Injectors	24" Hydraulic Disc Injectors
<b>EL48-8D</b>								
EL48-8D-7400	✓	✓	✓	✓	✓	✓	✓	✓
EL48-8D-7900	✓	✓	✓	✓	✓	✓	✓	✓
<b>EL48-6D</b>								
EL48-6D-3600	✓	✓	✓	✗	✗	✗	✗	✗
EL48-6D-4000	✓	✓	✓	✗	✓	✓	✗	✗
EL48-6D-4350	✓	✓	✓	✗	✓	✓	✗	✗
EL48-6D-4800	✓	✓	✓	✓	✓	✓	✓	✓
EL48-6D-5250	✓	✓	✓	✓	✓	✓	✓	✓
EL48-6D-6100	✓	✓	✓	✓	✓	✓	✓	✓
<b>EL48-4D</b>								
EL48-4D-3200	✓	✓	✓	✗	✓	✓	✗	✗
EL48-4D-3600	✓	✓	✓	✓	✓	✓	✓	✓
EL48-4D-4000	✓	✓	✓	✓	✓	✓	✓	✓
EL48-4D-4350	✓	✓	✓	✓	✓	✓	✓	✓
<b>EL54</b>								
EL54-2800	✓	✓	✓	✗	✗	✗	✗	✗
EL54-3200	✓	✓	✓	✓	✓	✓	✓	✓
EL54-3600	✓	✓	✓	✓	✓	✓	✓	✓
EL54-4000	✓	✓	✓	✓	✓	✓	✓	✓
EL54-4450	✓	✓	✓	✓	✓	✓	✓	✓
EL54-5000	✓	✓	✓	✓	✓	✓	✓	✓
<b>EL84</b>								
EL84-2650	✗	✗ ★	✗ ★	✗	✗ ★	✗	✗	✗
EL84-3000	✗	✓	✓	✗ ★	✗ ★	✓	✗ ★	✗
EL84-3550	✓	✓	✓	✓	✓	✓	✓	✓
EL84-4000	✓	✓	✓	✓	✓	✓	✓	✓
EL84-4450	✓	✓	✓	✓	✓	✓	✓	✓
EL84-5000	✓	✓	✓	✓	✓	✓	✓	✓
<b>EL66</b>								
EL66-1950	✗	✗ ★	✗ ★	✗ ★	✗	✗	✗	✗
EL66-2250	✗	✗ ★	✗ ★	✗ ★	✓	✓	✗	✗
EL66-2650	✗	✓	✓	✗ ★	✗ ★	✓	✗ ★	✗
EL66-3000	✓	✓	✓	✓	✓	✓	✓	✓
EL66-3400	✓	✓	✓	✓	✓	✓	✓	✓
EL66-3750	✓	✓	✓	✓	✓	✓	✓	✓

✓ Compatible    ✗ Incompatible    ★ Special shorter design