



COMPACT EXCAVATORS

1-8 Metric Tons



BOBCAT **COMPACT EXCAVATORS**

THE BOBCAT LINE OF COMPACT EXCAVATORS IS A PERFECT EXAMPLE OF OUR APPROACH TO EQUIPMENT DESIGN: NEVER STOP MAKING IT BETTER.

Bobcat® excavators deliver stronger performance in a lighter machine, taking the production of owners and operators to the next level. Smooth, refined hydraulics allow you to dig your way out of extremely tough jobs.

LIKE YOU, IT'S BUILT TO WORK HARD, AND WORK BETTER.





Machine: E48

YOUR COMPACT EQUIPMENT EXPERTS

Bobcat built its brand on quality equipment serviced by reliable local dealers who provide authorized service, warranty repairs and an exceptional inventory of in-stock parts. With the help of your knowledgeable dealer, you can keep your machine running strong, job after job, in the toughest working conditions.

YOUR JOB HAS MET ITS MATCH.

FIND YOUR IDEAL MACHINE IN OUR EXTENSIVE COMPACT EXCAVATOR LINEUP.

With machines ranging in size classes from 1-8 metric tons, the Bobcat compact excavator lineup enables you to match specs, features and Bobcat exclusives to the work that you do the most.



E10

10.2 hp (7.6 kW) | Long Arm
71.7 in. (1820 mm) Dig Depth



E17

15.0 hp (11.2 kW) | Standard Arm
87.8 in. (2230 mm) Dig Depth



E20

15.0 hp (11.2 kW) | Long Arm
100.2 in. (2545 mm) Dig Depth



E26

24.8 hp (18.5 kW) | Long Arm
114.4 in. (2906 mm) Dig Depth



E32

24.8 hp (18.5 kW)
Standard, Long or Extendable Arm
121.2 in. (3077 mm) – 153.2 in.
(3892 mm) Dig Depth



E35

24.8 hp (18.5 kW)
Standard, Long or Extendable Arm
121.2 in. (3077 mm) – 153.2 in. (3892 mm)
Dig Depth



E38

33.2 hp (24.7 kW)
Standard, Long or Extendable Arm
121.2 in. (3077 mm) – 153.2 in. (3892 mm)
Dig Depth



E40

40.4 hp (30.2 kW) | Long Arm
130.4 in. (3312 mm)
Dig Depth



E48

42.6 hp (31.4 kW)
Standard, Long or Extendable Arm
124.5 in. (3163 mm) – 148.4 in. (3769 mm)
Dig Depth



E55

49.7 hp (36.5 kW)
Standard or Long Arm
136.9 in. (3478 mm) – 152.7 in. (3878 mm)
Dig Depth



E60

55.7 hp (41.6 kW)
Long or Extendable Arm
156.7 in. (3981 mm) – 177.0 in. (4496 mm)
Dig Depth



E88

65.4 hp (48.7 kW) | Long Arm
182.0 in. (4622 mm) Dig Depth

NO MATTER WHICH MACHINE YOU SELECT, IT'S ENGINEERED TO PUSH YOUR PRODUCTIVITY TO NEW LEVELS.

A Bobcat E40 compact excavator is shown in a rural setting, likely a farm or construction site. The excavator is white with black tracks and a black bucket. The bucket is raised high into the air, and the sun is shining through it, creating a lens flare effect. The background features a line of trees and a clear blue sky. The excavator's arm has "Bobcat" and "E40" written on it. The operator is visible in the cab.

PERFORMANCE

Machine: E40

WORKS LIKE AN EXTENSION OF YOU

Responsive controls and smooth operation are a must when doing difficult work with tight deadlines. In a Bobcat compact excavator, you can feel the balance between the hydraulic system and the engine horsepower. It makes operation more intuitive. It makes you more productive, too. A load-sensing piston pump and closed center valve systems

deliver exceptional metering for smooth control of machine functions. With its cushioned work group, cylinders provide a smooth end-of-stroke while working. No matter which model you choose, your Bobcat excavator is engineered with advanced hydraulic components that maximize power, speed, predictability and control.

MORE PREDICTABLE

The Bobcat-exclusive control valves provide a predictable work group that helps you confidently make precise movements in tight-fitting areas.

SMOOTHER

The Bobcat-exclusive control valve systems enable smooth, fast hydraulic performance with leading cycle times. Cushioned cylinders further enhance your precision and control.



MORE POWERFUL

High-efficiency, torque-optimized piston pumps match force to demand, continuously responding to loads and delivering exceptional arm and bucket forces.

FASTER

When you measure cycle times on the job under load – filling trucks, placing boulders or trenching – you'll find that Bobcat beats the competition. By matching cylinder size to pump capacities, Bobcat excavators achieve industry-leading cycle times.

FINGERTIP BOOM SWING CONTROL

Effective excavator work is all about precision and quickness. Bobcat excavator controls provide the ability to make fine movements with low effort and maximum comfort – so you can get better results in less time, with less fatigue.

MULTI-FUNCTION METERING

A rocker-style thumb switch, located on the left joystick, provides superior boom swing control with better metering than you can achieve with foot pedals. Simultaneous actions, such as swinging while traveling, are simple and natural. A thumb toggle enables you to switch between second auxiliary hydraulics and boom offset without removing your hand from the left joystick. It provides more convenient, more intuitive control over your machine.

MORE CONTROLS AT YOUR FINGERTIPS

Left-Hand Joystick

When your excavator is equipped with secondary auxiliary hydraulics, the left-hand joystick includes a button for easy activation.

Right-Hand Joystick

Operators can control the rear view camera and re-bench the depth check system. (Available on machines equipped with deluxe instrumentation and 7-inch display.)



PERFORMANCE



Machine: E48
Attachment: Tine Grapple

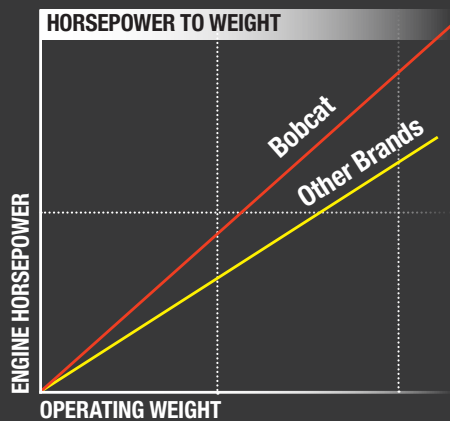
THE POWER YOU NEED TO PUSH FORWARD

Inside your Bobcat compact excavator, multiple systems and the machine's design work together to maximize hydraulic flow and pressure. This gives you the ultimate hydraulic horsepower advantage in jobs where multi-functioning is essential. You'll have the ability to travel, swing the boom and use your attachment seamlessly, without losing power.



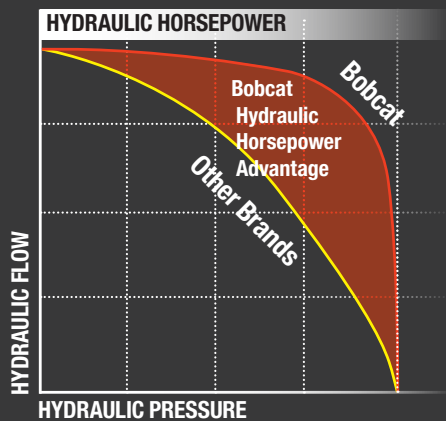
Machine: E35

LIGHTER MACHINES. MAXIMUM POWER.



MORE HORSEPOWER PER POUND

Bobcat excavators have more engine horsepower than other brands of the same size, which means pound for pound, you'll get better digging performance than you would from other manufacturers' machines.



HYDRAULIC HORSEPOWER MEANS FASTER CYCLE TIMES.

More engine horsepower enables Bobcat excavators to generate more power in the hydraulic system for faster cycle times under load. Simply put, they dig stronger and faster.



Machine: E26



Machine: E35

DEPTH CHECK SYSTEM

REDUCE OVER- AND UNDER-DIGGING.

The upgraded depth check system for compact excavators continuously measures and tracks depth, grade and slope from the comfort of your cab – improving your accuracy, efficiency and profitability.

Machine: E55
Accessory: Depth Check System



Depth Check Interface

ENHANCE YOUR WORK EFFICIENCY.

Depth check streamlines workflow by enabling fast and accurate depth confirmation and minimizing manual checks, material costs and rework. By reducing waste and boosting efficiency, owners will experience a rapid return on investment.

UPGRADED FEATURES

- **SLOPE CAPABILITY**

The latest depth check system guides you to a finished, sloped grade for digging drainage or installing non-pressurized water lines.

- **GRADE MEASURE**

Use your excavator's work group and bucket or attachment as a virtual tape measure and check distance, depth and slope between two points.

- **MACHINE LEVEL INDICATORS**

Check pitch and roll angles on the display to determine if your machine is level for grading applications.

- **BUCKET FOCUS**

Set the system to use the right, left or middle bucket edge for depth and distance readings, ideal for side-sloped applications.



WATCH OUR
DEPTH CHECK VIDEO



Machine: E55



OPTIONAL LASER-RECEIVER INTEGRATION

When your jobsite requires pinpoint accuracy, such as sustaining a flat grade for foundations or a sloped grade for gravity-fed water lines, consider pairing Bobcat depth check with an optional laser receiver. Laser receivers provide a consistent benchmark across the jobsite. Bobcat furthers your efficiency with an automatic bench when an operator slowly passes the work group through the laser beam.

FULLY INTEGRATED WITH BOBCAT COMPACT EXCAVATORS

Reduce guesswork and limit the need for manual grade checks. The Bobcat depth check system provides operators with real-time guidance to reach target depths and slopes more efficiently.

- Set a single bench point and corresponding depth target, then track your progress with real-time visuals on the in-cab display.
- Receive visual and audio alerts as you approach, reach or exceed the target.
- Utilize standard or long arm, mechanical X-Change™ system, Hydraulic X-Change, and hydraulic pin-grabber couplers to work with a majority of Bobcat compact excavators.
- Use with buckets as well as attachments such as augers, plate compactors and trenchers.

An aerial view of a Bobcat compact excavator operating in a deep trench. The machine is positioned in the center of the frame, with its boom and bucket extended towards the right. The trench walls are steep and composed of dark, loose soil. The excavator's tracks are visible, showing deep treads. The lighting creates strong shadows, emphasizing the rugged terrain and the machine's position.

VISIBILITY

VISIBILITY ON ALL SIDES – AND INTO THE TRENCH

The tall, wide windows inside Bobcat compact excavators provide as much glass surface area as possible. Add a large top window and narrow side pillars, and you have the ultimate visibility. But that's not all. Bobcat compact excavators deliver effective offset digging for the best view into the trench, plus an in-track swing frame that prevents collisions with walls and other jobsite obstacles.



Machine: E35

IN-TRACK SWING FRAME

All Bobcat compact excavators feature the exclusive in-track swing frame, which allows you to get closer to your work. Our swing castings and cylinders stay within the tracks when offset digging – giving you the ability to truly dig flush up against an obstacle and see the work in tight areas.



LED WORK LIGHTS

Extra-bright, extra-efficient LED work lights are installed standard, providing you with bright, wide-spectrum illumination for evening work or environments with minimal lighting.



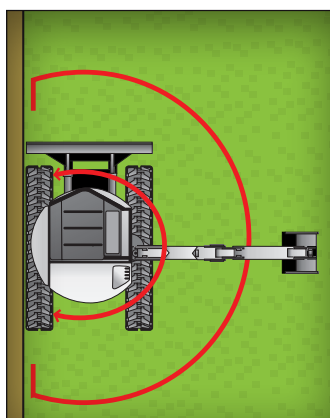
Machine: E19e
Attachment: Nitrogen Breaker

TAIL SWING

Machine: E38



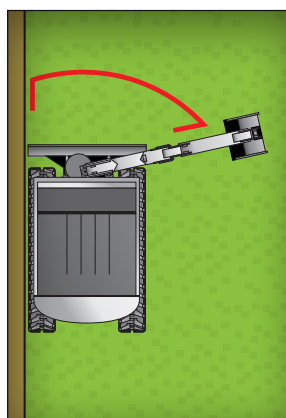
GET IT DONE WITH LESS REPOSITIONING.



ZERO AND MINIMAL TAIL SWING:

LESS RESTRICTED ROTATION IN TIGHTER AREAS

A zero-tail-swing (ZTS) or minimal-tail-swing excavator gives greater flexibility if you are constantly working close to objects or against a wall.



CONVENTIONAL TAIL SWING:

MAXIMUM DIGGING POWER AND NARROW WIDTH

A zero-tail-swing (ZTS) or minimal-tail-swing excavator is generally a little wider than a conventional-tail-swing excavator. Consider conventional if your biggest obstacle is gaining access through a gate or maneuvering into a crowded backyard.

BREAKOUT PERFORMANCE THAT'S CUSTOMIZED TO YOU

Bobcat compact excavators provide you with the choice of three different lift arm configurations. This allows you to customize the excavator's breakout forces and reach to the work you do most often. Choose a standard arm, long arm or extendable arm. Several models are available with each of the three arm options.



STANDARD ARM

The standard arm gives you maximum breakout force and lifting ability.

LONG ARM

If you need more reach and dig depth to avoid machine repositioning or to make loading trucks faster and easier, equip your machine with the optional long arm (standard on some models).



EXTENDABLE ARM

The extendable arm option gives you the best of both worlds. Get power and lifting performance when it's retracted. Telescope the arm to extend the machine's dig depth and reach without repositioning. It's the only extendable arm in the industry that's clamp-compatible.





COMFORT

UNBEATABLE OPERATOR EXPERIENCE

With its wide suspension seat and an interior space that's designed with operators of every size in mind, you'll enjoy a comfortable environment for long hours on the job.

DURABLE DESIGN

The durable design of the Bobcat excavator features tight-fitting body panels that reduce sound and vibration, while the tubular-frame reinforced door provides better sealing and protection against dust.

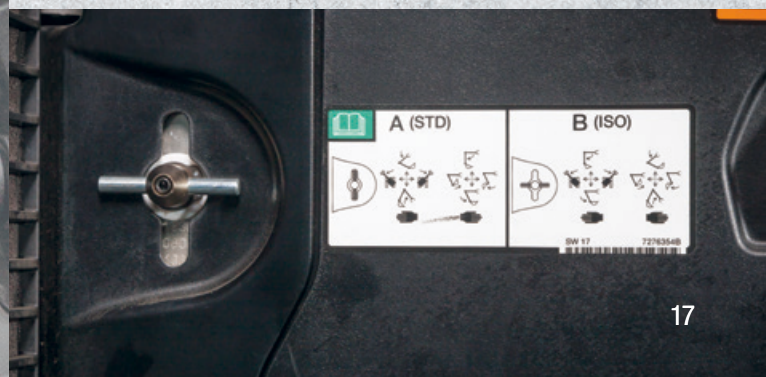


WORK LONGER HOURS IN THE CAB.

Operators can work longer hours in the cab thanks to the optional automatic heat and air conditioning for consistent temperature control, an optional heated high-back seat with headrest for added support and warmth, convenient behind-the-seat storage, and plenty of floor space with foldaway foot pedals. The high ride quality also ensures greater comfort on bumpy jobsites.

PREMIUM CONTROLS

The premium joysticks are designed for comfort and quality at your fingertips. A conveniently located control pattern selector allows the operator to easily switch between ISO and standard controls without leaving their seat.



DISPLAY OPTIONS



DELUXE INSTRUMENTATION

Deluxe instrumentation puts key functions at your fingertips and critical information that is clearly visible on an ultra-sharp LCD panel with a simple interface.

OPERATION DATA

Quickly check coolant temperature, throttle position, idle time and engine rpm. You can check hourly or annual fuel consumption in real time.

PASSWORD-PROTECTED KEYLESS START

Eliminate downtime due to lost keys and reduce the chance for theft or unauthorized use. Keyless start provides for one assignable owner code and up to eight operator codes.

FUNCTIONAL LOCKOUTS

Protect your investment from misuse or accidental use by locking out certain functions, such as two-speed.

MAINTENANCE REMINDERS

Receive convenient reminders when scheduled maintenance is due.

MULTIPLE LANGUAGES

Set the display information to English, Spanish and five other languages.

ECO MODE

Optimizes engine performance for less fuel consumption.

OPTIONAL REAR CAMERA



The optional rear camera offers a continuous rear view from the operator's seat. It helps identify obstacles that, if not avoided, could damage the excavator and its components. The optional camera is mounted high and out of the way to prevent contact with obstacles and debris. A protective structure further ensures rear display reliability.

OPTIONAL 7-INCH TOUCH DISPLAY

It's the most advanced in-cab display for compact equipment. With the optional touch display, you'll receive detailed machine information and experience unprecedented device connectivity. The wide, easy-to-use touchscreen delivers machine performance information for more efficient operation and improved productivity. The display also supports multiple languages.

GLOVE SENSITIVITY

The screen works with your light-duty work gloves, providing convenient touch operation without the inconvenience of glove removal.

SCREEN DURABILITY

The high-resolution, full-color touch display is designed to work with open cabs and extreme weather. The tempered glass screen is rated 9H on the Mohs hardness scale for a high level of scratch protection. The display is pressure-washer tested to ensure superior waterproofing that stands up to wet, humid environments.

PHONE AND DEVICE CONNECTIVITY

An integrated radio with Bluetooth allows for a wide range of on-the-job entertainment – plus the ability to make and receive hands-free phone calls.

ACTIVE NOISE CANCELING DURING PHONE CALLS

Active noise canceling on the high-fidelity in-cab microphone allows call recipients to hear operators easily and clearly.

DETAILED FAULT CODE INFORMATION

Save time troubleshooting with more detailed error code explanations. You'll also see which codes are currently active, what time inactive codes occurred and the name of the operator who was logged in when the fault code occurred. For select codes, you can access extended descriptions that give you information on the root cause of the issue and its impact.

JOG SHUTTLE

If your hands are wet or you are working with dirty gloves, the jog shuttle provides an easy backup input.



OTHER INNOVATIVE TOUCH SCREEN FEATURES

- Import contacts from your mobile phone.
- Keep a customizable contact list for each operator.
- Access detailed operator statistics and provide jobsite security with 20 unique operator codes.
- Enable feature lockouts and maximum travel speeds to customize the experience per operator.
- Track engine hours, idle hours and fuel usage by operator.
- Set a new clock for each job to track machine productivity and employee performance.
- Add favorite screens for easy access.
- Unique radio includes presets for each operator.
- USB power port keeps devices charged and supports MTP for playing music.
- Auxiliary input via 3.5 mm jack.
- An ambient light sensor has day and night modes.
- Timed screen lock allows a set period for code-free machine restarts.

UPTIME PROTECTION

BUILT TO LAST

Bobcat designs excavators with reliability and peace of mind at the forefront, ensuring maximum uptime protection. No other manufacturer offers as many job-proven features that keep you working longer in the field.

MACHINE PROTECTION

Bobcat excavators monitor engine and hydraulic functions. If conditions risk damage to the engine or hydraulic components, the system will alert the operator and, if necessary, de-rate engine power as well as hydraulic flow. It still allows the operator to complete the job at hand or move the excavator to an area for diagnosis.

DIAGNOSTICS

Bobcat provides on-board diagnostics to efficiently troubleshoot problems in the field or prevent them before they occur – reducing downtime for you.

KEYLESS START

Reduce the risk of loss due to theft or unauthorized use by equipping your excavator with the optional keyless start on most models (standard on select models).



ROBUST WORK GROUP

The work group on Bobcat excavators is designed to provide longer structural life and improve lifting performance. Cast pivot joints provide precise pin alignment, which lengthens the service life of pivot pins and bushings. The boom structure is designed with room for secondary auxiliary hydraulics – so you can add the option faster and for less cost.



STRONG HOSES, SMART ROUTING

Bobcat steel hydraulic lines offer better protection than rubber hoses. They're tucked securely into the top area of the boom structure, preventing costly damage and protecting component life.



X-FRAME UNDERCARRIAGE

The X-frame design offers increased ground clearance that allows you to go through more. The design sheds debris to reduce your cleanup time as well.

AUTOMATIC GLOW PLUGS

Bobcat uses automatic glow plugs to warm the fuel mixture within the engine when it is started at a cooler temperature. This leads to easier starts and longer life for the engine and starter.

BATTERY RUNDOWN PROTECTION

The lighting circuit automatically shuts down to prevent accidental battery discharge when lights are left on after the work is done.

PROTECTED DRIVE MOTORS

With drive motors contained within the width of the tracks, they're protected from damage. You also have more agility in soft conditions. Motor covers are also recessed, eliminating more potential for damage.

ELECTRONIC PROTECTION

Bobcat controls and electrical systems are engineered with more watertight, corrosion-resistant connectors than other manufacturers' machines.

FUEL FILL ALERT

An audible alarm beeps faster as the fuel tank approaches its capacity, taking the guesswork out of refueling. Available on the majority of Bobcat excavators.

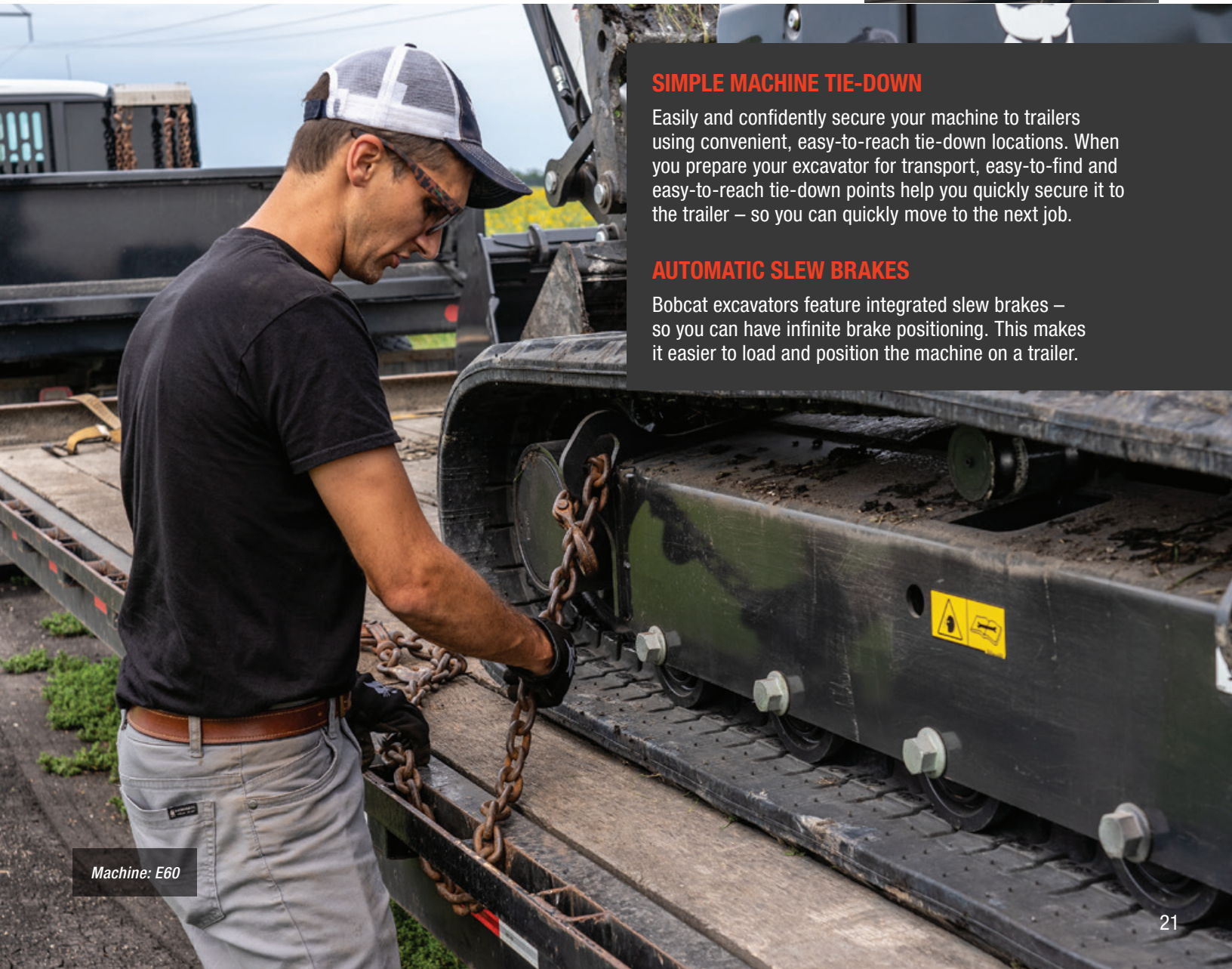


SIMPLE MACHINE TIE-DOWN

Easily and confidently secure your machine to trailers using convenient, easy-to-reach tie-down locations. When you prepare your excavator for transport, easy-to-find and easy-to-reach tie-down points help you quickly secure it to the trailer – so you can quickly move to the next job.

AUTOMATIC SLEW BRAKES

Bobcat excavators feature integrated slew brakes – so you can have infinite brake positioning. This makes it easier to load and position the machine on a trailer.



Machine: E60

SIMPLE, STATE OF THE ART AND NON-DPF

Tier 4 emissions standards required every equipment manufacturer to make equipment changes in order to meet emission requirements. Bobcat seized the opportunity to design a non-DPF Tier 4 solution that avoids the maintenance costs and downtime that come with DPF exhaust aftertreatment.

Bobcat engines utilize their own ultra-low particulate combustion (ULPC) design to drastically reduce particulate matter without the need for a DPF. The biggest advantage of a non-DPF Tier 4 solution is simplicity.

NO REGENERATION

The DPF cleaning process, called regeneration, requires knowledgeable operation to keep the DPF and engine running properly. Since Bobcat compact excavators do not require a DPF, regeneration will never slow down your work.

COLD WEATHER ENGINE PROTECTION

Protects your machine from possible damage and working too hard before the engine is properly warmed up.

INCREASED ENGINE OIL SERVICE INTERVAL

The recommended engine oil service interval has increased from 500 to 750 hours, giving you more uptime per oil change.





Bobcat

MACHINE IQ[®]

Stay in the driver's seat of your fleet with the ability to track information and machine health from virtually anywhere on any device. Standard on most models.

OPTIMIZE PERFORMANCE.

- Check operating hours and fuel levels.
- Access fleet utilization reporting.*

MAXIMIZE UPTIME.

- Receive maintenance reminder email alerts with instructions and parts.*
- Track maintenance intervals.
- Get fault code notifications and troubleshooting guidance.*

ENHANCE SECURITY.

- Create geofences and curfews with breach notifications.*
- Get motion detection notifications.*
- Access GPS location and history.

*Available through Machine IQ Health and Security subscription

SUBSCRIPTION

Sign up for the free standard package or upgrade to the Advanced Health and Security package for more comprehensive machine data.

BUILT TO PERFORM. BACKED TO ENDURE.

Every Bobcat compact excavator comes with a 24-month, 2,000-hour standard warranty for coverage against defects in materials or workmanship. For added confidence, choose Protection Plus[®] extended warranty coverage. Available for powertrain, hydraulics or full-machine protection, this no-deductible plan includes factory-backed service, helps minimize repair costs and enhances resale value – all honored at authorized Bobcat dealers.

Machine: E55

BOBCAT ENGINE

REDESIGNED BOBCAT ENGINE

Compact excavators over 25 horsepower have a redesigned engine that's more efficient while delivering the performance you need. It also reduces and simplifies routine maintenance. Operators will enjoy improved cold-weather operation and a variety of features that make maintenance and service more convenient.

FUEL FILTER

The fuel filter has more holding capacity to capture impurities for longer intervals, greatly extending its life. The filter is also easier to change, and it includes a clear water bowl for easy monitoring and a sensor to notify you when draining is needed. To simplify upkeep, the display lets you know when the filter needs to be serviced.



LIFT PUMP AND SELF-PRIMING FUEL SYSTEM

The fuel pump enables a self-priming system that continuously forces air out of the low-pressure fuel system and back into the fuel tank, eliminating the need for a primer bulb. This makes it easier on operators if the fuel tank runs empty or if changing the fuel filter.

FUEL PRE-FILTER

A fuel pre-filter protects the lift pump from particles that can increase wear and degrade performance. You don't need a screen at the fuel neck to capture debris.

FUEL RECIRCULATION VALVE

You work when it's cold, and your excavator should, too. A fuel recirculation valve returns warm fuel to the lift pump to reduce fuel gelling issues. It works better than an electric heater, keeping you running in frigid conditions and greatly improving cold-weather performance.

PANORAMIC SERVICEABILITY

Time is money. Routine maintenance is an important factor in controlling operating costs. Filters, fluid and daily maintenance checkpoints are right at your fingertips.





Machine: E60



Bobcat makes it easy to find and reach your engine checkpoints in a Bobcat excavator, so daily maintenance actually gets done every day. Comparing our service access to other excavators is like comparing a 60-inch LCD to a 15-inch black-and-white TV. The swing-open tailgate and side access hood put the engine and pump package, valve bank, cooling system, and plumbing in easy reach.

A centralized grease bank makes fast, simple work of lubricating the slew bearing, slew pinion and swing cylinder. Track tensioning is performed via an easy-to-reach, well-protected grease cylinder fitting.

On most Bobcat excavators, a multigroove auto-tensioning belt, made of tough DuPont™ Kevlar®, requires no adjustment, making maintenance much easier. The cooling cores can be separated for quick, easy cleaning of the radiator.

DuPont™ and Kevlar® are trademarks or registered trademark of E.I. du Pont de Nemours and Company.

A Bobcat E88 skid steer loader is shown with an Angle Blade attachment. The machine is white with orange accents. The operator is visible in the cab. The blade is positioned over a pile of dark brown soil. The background shows a field with trees under a cloudy sky.

ANGLE BLADE

THE **ANGLEBLADE**

THAT MOVES YOU STRAIGHT AHEAD

The Bobcat angle blade includes a high range of motion, component protection and robust controls for more productivity.

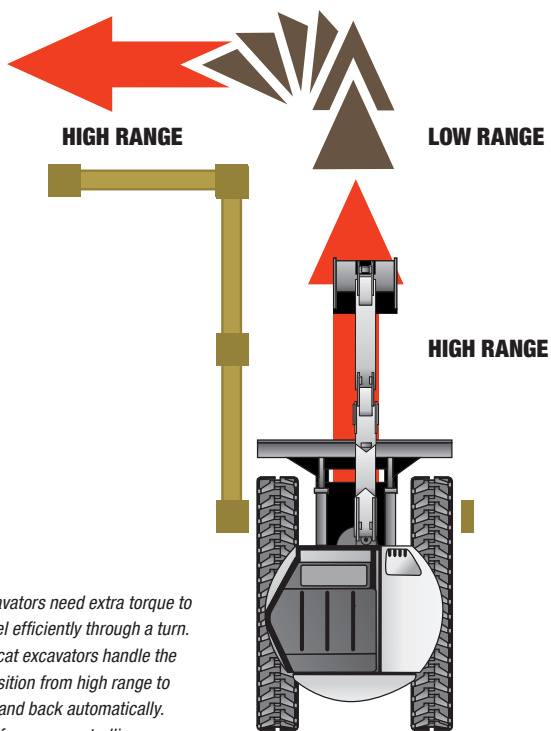
- More downward positioning ability adds stability.
- Blade float simplifies grading, leveling and backfilling.
- Blade cutting edge is reversible for extended life.

Machine: E88



AUTO SHIFT TRAVEL

Auto shift travel responds to your needs as you travel. When more torque is required, the travel motors automatically shift from high range to low range. It returns back to high range automatically when hydraulic pressure decreases. It offers superb travel performance without having to shift manually. Available on most models.



Excavators need extra torque to travel efficiently through a turn. Bobcat excavators handle the transition from high range to low and back automatically. You focus on controlling your direction.



Machine: E40



AUTO IDLE

When you stop the work, Bobcat excavators anticipate your need for a quieter environment. Auto idle engages automatically when machine functions are not used for four seconds. This saves fuel and lowers the noise considerably, improving jobsite communications. Move the controls or initiate travel, and the excavator automatically returns to the previously set throttle position.

VERSATILITY

DO MORE THAN DIG.

Your Bobcat compact excavator is built for more than excavation. With a full lineup of compatible attachments, you can break concrete, dismantle structures or bore holes for trees – all with a single machine. It's engineered for adaptability, so you can take on more work with less downtime.

Many attachments are shared across compact equipment platforms, making it easier to get more from your fleet. With over a dozen options available, your excavator becomes a versatile tool carrier – built to expand your capabilities and your business.



BUILT-IN VERSATILITY

- Auger
- Breaker
- Clamp
- Drum mulcher
- Flail mower
- Grading blade
- Grading bucket
- Grapple, three-tine
- Hydra-Tilt™ swing accessory
- Packer wheel
- Plate compactor
- PowerTilt® swing accessory
- Ripper
- Trencher



Machine: E42

SELECTABLE AUXILIARY HYDRAULIC FLOW

Bobcat excavators allow you to quickly select an auxiliary flow rate that best matches a particular attachment. Low flow provides precise control of the PowerTilt swing accessory and Hydra-Tilt swing accessory. Medium flow is perfect for the clamp attachment. Maximum flow is best for breakers, augers and compactors.

PowerTilt® is a registered trademark of Helac Corporation.

FINGERTIP CONTROLS

The auxiliary hydraulic controls are at your fingertips, providing precision control and low-fatigue operation. Variable flow allows you to control the attachment speed and precisely move a clamp. Detent provides continuous flow for attachments such as augers and plate compactors.

VERSATILITY

YOUR CONNECTION TO ACCOMPLISH MORE

Bobcat compact excavators are built to quickly change attachments. Choose from a variety of attachment couplers across our lineup – whether you're looking for industry-leading compatibility, bucket rotation or tilt capabilities – and handle more tasks with fewer machines.



Explore excavator coupler options at **Bobcat.com**



Hydraulic X-Change Coupler

HYDRAULIC X-CHANGE COUPLER

Available on select Bobcat compact excavators, this advanced attachment mounting system allows you to swap non-hydraulic attachments with the push of a switch inside the cab.

MECHANICAL X-CHANGE COUPLER

The exclusive Bobcat X-Change system is a trusted solution that comes standard on many Bobcat compact excavators. Designed for efficiency, it delivers a faster, easier way to swap attachments compared to pin-on systems, plus it delivers optimal pin-on geometry for full breakout force.

HYDRAULIC PIN-GRABBER COUPLER

The hydraulic pin grabber system features a familiar quick coupler design for fast attachment changes without leaving the cab. It also allows the bucket to be reversed for digging in a “shovel position,” adding flexibility for tight spaces and specialized trenching tasks.

MORE COUPLER OPTIONS

Mechanical pin-grabber and hydraulic tilt coupler are also available.



Hydraulic Pin-Grabber Coupler

Machine: E48



Machine: E48



CLAMP OPTION

The latest Bobcat clamp design has more points of contact for a better hold on irregular and round objects. Its cradle-like grip helps protect delicate or decorative objects, and it's built with high-strength steel for lasting durability.

- Optimized structure for improved debris shedding
- Wide spacing between clamp jaws provides great visibility to the load
- Fully backward compatible with older Bobcat excavator models

OPTIONAL CLAMP DIVERTER VALVE

Switch between the clamp and another hydraulic attachment without disconnecting hoses.

THE INDUSTRY'S ONLY CLAMP-COMPATIBLE EXTENDABLE ARM

The optional extendable arm gives you the power and lifting performance of a shorter boom arm or the dig depth and reach of a longer one.

PRO CLAMP SYSTEM

Dealer-installed option for maximum grip adjustability.

SPECIFICATIONS



Model	E10	E17	E20	E26	E32	E35
GENERAL						
Tail Swing Type	Zero	Zero	Zero	Minimal – 3.5 in. (89 mm)	Conv. – 13.4 in. (340 mm)	Zero
Weight	2593 lb. (1176 kg)	3774 lb. (1712 kg)	4167 lb. (1890 kg)	6489 lb. (2942 kg)	7403 lb. (3358 kg)	7659 lb. (3474 kg)
Dig Depth	71.7 in. (1820 mm)	87.8 in. (2230 mm)	100.2 in. (2545 mm)	114.4 in. (2906 mm)	121.2 in. (3077 mm)	121.2 in. (3077 mm)
Reach at Ground Level	121.8 in. (3093 mm)	155.2 in. (3944 mm)	168.8 in. (4287 mm)	191.9 in. (4876 mm)	194.5 in. (4940 mm)	204.3 in. (5190 mm)
Max. Dump Height	71.6 in. (1818 mm)	97.8 in. (2483 mm)	110.2 in. (2799 mm)	128.8 in. (3272 mm)	137.2 in. (3484 mm)	137.2 in. (3484 mm)
Track Width	28.0-43.3 in. (710-1100 mm)	38.6-53.5 in. (980-1358 mm)	38.6-53.5 in. (980-1360 mm)	61.0 in. (1550 mm)	61.8 in. (1569 mm)	69.7 in. (1769 mm)
Ground Pressure	4.2 psi (0.29 bar)	4.2 psi (0.29 bar)	4.2 psi (0.29 bar)	4.1 psi (0.28 bar)	4.7 psi (0.33 bar)	4.6 psi (0.32 bar)
Standard Track Tread Width	7.1 in. (180 mm)	9.1 in. (230 mm)	9.1 in. (230 mm)	11.8 in. (300 mm)	11.8 in. (300 mm)	11.8 in. (300 mm)
PERFORMANCE						
Arm Breakout Force	1248 lbf. (5550 N)	2680 lbf. (11,920 N)	2588 lbf. (11,510 N)	3547 lbf. (15,780 N)	4690 lbf. (20,861 N)	4690 lbf. (20,861 N)
Bucket Breakout Force	1865 lbf. (8294 N)	3271 lbf. (14,550 N)	4121 lbf. (18,330 N)	5652 lbf. (25,140 N)	7284 lbf. (32,402 N)	7284 lbf. (32,402 N)
Rated Lift Capacity						
(Over blade, ground level, 10 ft. (3 m) reach)	527 lb. (239 kg)	807 lb. (366 kg)	1382 lb. (626 kg)	2359 lb. (1070 kg)	2975 lb. (1349 kg)	3318 lb. (1505 kg)
(Over side, ground level, 10 ft. (3 m) reach)	263 lb. (119 kg)	540 lb. (244 kg)	615 lb. (279 kg)	1016 lb. (461 kg)	1329 lb. (603 kg)	1393 lb. (632 kg)
Travel Speed: Low/High	1.3/1.7 mph (2.1/2.8 km/hr.)	1.2/2.5 mph (1.9/4 km/hr.)	1.3/2.6 mph (2.1/4.2 km/hr.)	1.8/3.2 mph (2.9/5.2 km/hr.)	1.6/2.9 mph (2.6/4.7 km/hr.)	1.6/2.9 mph (2.6/4.7 km/hr.)
LONG ARM OPTION PERFORMANCE						
Tail Swing Type/Overhang	Zero		Zero	Minimal – 3.5 in. (89 mm)	Conv. – 16.9 in. (429 mm)	Minimal – 3.2 in. (81 mm)
Weight	2593 lb. (1176 kg)	—	4167 lb. (1890 kg)	6489 lb. (2942 kg)	8269 lb. (3752 kg)	8362 lb. (3794 kg)
Dig Depth	71.7 in. (1820 mm)	—	100.2 in. (2545 mm)	114.4 in. (2906 mm)	133.0 in. (3377 mm)	133.0 in. (3377 mm)
Reach at Ground Level	121.8 in. (3093 mm)	—	168.8 in. (4287 mm)	191.9 in. (4876 mm)	205.9 in. (5230 mm)	215.8 in. (5480 mm)
Max. Dump Height	71.6 in. (1818 mm)	—	110.2 in. (2799 mm)	128.8 in. (3272 mm)	144.3 in. (3665 mm)	144.3 in. (3665 mm)
EXTENDABLE ARM OPTION PERFORMANCE						
Tail Swing Type/Overhang	—	—	—	—	Conv. – 16.9 in. (429 mm)	Minimal – 3.2 in. (81 mm)
Weight	—	—	—	—	8497 lb. (3855 kg)	8590 lb. (3897 kg)
Dig Depth	—	—	—	—	153.2 in. (3892 mm)	153.2 in. (3892 mm)
Reach at Ground Level	—	—	—	—	225.3 in. (5722 mm)	235.1 in. (5972 mm)
Max. Dump Height	—	—	—	—	154.5 in. (3925 mm)	154.5 in. (3925 mm)
ENGINE						
Emissions Tier (EPA)	Tier 4	Tier 4	Tier 4	Tier 4	Tier 4	Tier 4
Horsepower	10.2 hp (7.6 kW)	15.0 hp (11.2 kW)	15.0 hp (11.2 kW)	24.8 hp (18.5 kW)	24.8 hp (18.5 kW)	24.8 hp (18.5 kW)
Engine Type	Diesel	Diesel	Diesel	Diesel	Diesel	Diesel
Fuel Tank Capacity	4.2 gal. (15.9 L)	5.6 gal. (21.2 L)	5.6 gal. (21.2 L)	9.1 gal. (34.4 L)	13.7 gal. (51.9 L)	13.7 gal. (51.9 L)
Battery Rundown Protection	—	Std	Std	Std	Std	Std
MACHINE FEATURES & OPTIONS						
Angle Blade	—	—	—	—	—	Opt
Auto-Idle Throttle	—	—	Opt	Std	Std	Std
Auto-Shift Travel System	—	—	Opt	Std	Std	Std
Automatic Slew Brake	—	Std	Std	Std	Std	Std
Blade Float	—	—	Std	Std	Std	Std
Bolt-On Street Pad	—	—	—	—	—	Opt
Cab With Heat	—	—	Opt	—	—	—
Cab With Heat and AC	—	—	—	Opt	Opt	Opt
Control Pattern Selector Valve	Std	Std	Std	Std	Std	Std
Deluxe Cloth Seat	—	—	—	Opt	Opt	Opt
Depth Check	—	—	—	—	Opt	Opt
Diverter Valve	—	—	—	—	Opt	Opt
Fingertip Boom Swing Control	—	Std	Std	Std	Std	Std
Falling Object Protection Structure (FOPS)	—	Std	Std	Std	Std	Std
Roll Over Protective Structure (ROPS)	Std	Std	Std	Std	Std	Std
Fold-Down TOPS	Std	—	—	—	—	—
Fuel Fill Alert	—	Std	Std	Std	Std	Std
Heated Seat	—	—	—	—	Opt	Opt
Keyless/Password Start System	Opt	—	—	Opt	Opt	Opt
Lift Eye	Opt	Std	Std	Opt	Std	Std
Retractable Undercarriage	Std	Std	Std	—	—	—
Segmented Tracks	—	—	—	—	—	—
Steel Tracks	—	—	—	—	—	Opt
FEATURES FOR ATTACHMENTS						
Mechanical Pin-Grabber Coupler	—	Opt	Opt	Opt	—	—
Hydraulic Pin-Grabber Coupler	—	—	—	Opt	Opt	Opt
Mechanical X-Change Coupler	—	—	—	Std	Std	Std
Hydraulic X-Change Coupler	—	—	—	—	Opt	Opt
Pin On Attachment System	Std	Std	Std	—	—	—
Auxiliary Hydraulic Flow	5.3 gpm (20.0 L/min.)	7.9 gpm (30.0 L/min.)	7.9 gpm (30.0 L/min.)	14.2 gpm (53.8 L/min.)	16.9 gpm (63.9 L/min.)	16.9 gpm (63.9 L/min.)
Auxiliary Hydraulic Pressure	2756 psi (190.02 bar)	2611 psi (180.02 bar)	2611 psi (180.02 bar)	2611 psi (180.02 bar)	2987 psi (205.94 bar)	2987 psi (205.95 bar)
Hydraulic Clamp	—	Opt	Opt	Opt	Opt	Opt
Fingertip Auxiliary Control	—	Std	Std	Std	Std	Std
Secondary Auxiliary Hydraulics	—	—	—	Opt	Opt	Opt
Selectable Auxiliary Flow	—	Std	Std	Std	Std	Std

*E40 depth check doesn't have some of the updated features available on other models. Talk to your dealer for details.



E38	E40	E48	E55	E60	E88
Zero	Minimal – 2.0 in. (50 mm)	Conv. – 12.0 in. (305 mm)	Minimal – 0.6 in. (15 mm)	Conv. – 11.2 in. (284 mm)	Conv. – 13.0 in. (330 mm)
7893 lb. (3580 kg)	9180 lb. (4164 kg)	9830 lb. (4459 kg)	11,357 lb. (5151 kg)	12,315 lb. (5586 kg)	19,600 lb. (8891 kg)
121.2 in. (3077 mm)	130.4 in. (3312 mm)	124.5 in. (3163 mm)	136.9 in. (3478 mm)	156.7 in. (3981 mm)	182.0 in. (4622 mm)
204.3 in. (5190 mm)	215.2 in. (5465 mm)	207.1 in. (5261 mm)	231.9 in. (5889 mm)	246.3 in. (6256 mm)	282.5 in. (7176 mm)
137.2 in. (3484 mm)	146.8 in. (3729 mm)	150.6 in. (3826 mm)	156.5 in. (3975 mm)	171.1 in. (4347 mm)	198.0 in. (5029 mm)
69.7 in. (1769 mm)	72.8 in. (1850 mm)	72.8 in. (1850 mm)	77.2 in. (1960 mm)	77.2 in. (1960 mm)	86.6 in. (2200 mm)
4.7 psi (0.33 bar)	4.3 psi (0.29 bar)	4.7 psi (0.33 bar)	4.2 psi (0.29 bar)	4.6 psi (0.32 bar)	5.7 psi (0.39 bar)
11.8 in. (300 mm)	13.8 in. (350 mm)	13.8 in. (350 mm)	15.7 in. (400 mm)	15.7 in. (400 mm)	17.7 in. (450 mm)
4690 lbf. (20,861 N)	4074 lbf. (18,120 N)	5820 lbf. (25,889 N)	6987 lbf. (31,078 N)	6446 lbf. (28,674 N)	8620 lbf. (38,342 N)
7284 lbf. (32,402 N)	7284 lbf. (32,402 N)	9601 lbf. (42,707 N)	9511 lbf. (42,307 N)	10,261 lbf. (45,642 N)	15,130 lbf. (67,300 N)
3318 lb. (1505 kg)	3939 lb. (1787 kg)	4921 lb. (2232 kg)	6746 lb. (3060 kg)	6411 lb. (2908 kg)	10,020 lb. (4545 kg)
1537 lb. (697 kg)	2186 lb. (992 kg)	2083 lb. (945 kg)	2330 lb. (1057 kg)	3285 lb. (1490 kg)	5373 lb. (2437 kg)
1.6/2.9 mph (2.6/4.7 km/hr.)	1.6/3.2 mph (2.6/5.1 km/hr.)	1.6/3.3 mph (2.6/5.2 km/hr.)	1.8/2.8 mph (2.8/4.5 km/hr.)	1.8/2.8 mph (2.8/4.5 km/hr.)	1.6/2.6 mph (2.5/4.2 km/hr.)
Minimal – 3.2 in. (81 mm)	Minimal – 1.6 in. (40 mm)	Conv. – 12.5 in. (318 mm)	Minimal – 0.5 in. (13 mm)	Conv. – 11.2 in. (284 mm)	Conv. – 13.0 in. (330 mm)
8596 lb. (3900 kg)	9180 lb. (4164 kg)	10,425 lb. (4729 kg)	11,876 lb. (5386 kg)	12,315 lb. (5586 kg)	19,600 lb. (8891 kg)
133.0 in. (3377 mm)	130.4 in. (3312 mm)	136.3 in. (3463 mm)	152.7 in. (3878 mm)	156.7 in. (3981 mm)	182.0 in. (4622 mm)
215.8 in. (5480 mm)	215.2 in. (5465 mm)	218.5 in. (5550 mm)	247.2 in. (6278 mm)	246.3 in. (6256 mm)	282.5 in. (7176 mm)
144.3 in. (3665 mm)	146.8 in. (3729 mm)	157.8 in. (4008 mm)	166.5 in. (4230 mm)	171.1 in. (4347 mm)	198.0 in. (5029 mm)
Minimal – 3.2 in. (81 mm)	—	Conv. – 12.5 in. (318 mm)	—	Conv. – 11.2 in. (284 mm)	—
8824 lb. (4003 kg)	—	10,666 lb. (4838 kg)	—	12,646 lb. (5736 kg)	—
153.2 in. (3892 mm)	—	148.4 in. (3769 mm)	—	177.0 in. (4496 mm)	—
235.1 in. (5972 mm)	—	229.6 in. (5831 mm)	—	265.5 in. (6743 mm)	—
154.5 in. (3925 mm)	—	164.0 in. (4166 mm)	—	182.8 in. (4643 mm)	—
Tier 4	Tier 4	Tier 4	Tier 4	Tier 4	Tier 4
33.2 hp (24.7 kW)	40.4 hp (30.2 kW)	42.6 hp (31.4 kW)	49.7 hp (36.5 kW)	55.7 hp (41.6 kW)	65.4 hp (48.7 kW)
Turbo Diesel	Turbo Diesel	Turbo Diesel	Turbo Diesel	Turbo Diesel	Turbo Diesel
13.7 gal. (51.9 L)	13.7 gal. (51.9 L)	19.0 gal. (71.9 L)	19.0 gal. (71.9 L)	19.0 gal. (71.9 L)	30.6 gal. (115.8 L)
Std	Std	Std	Std	Std	Std
Opt	Opt	Opt	Opt	Opt	Opt
Std	Std	Std	Std	Std	Std
Std	Std	Std	Std	Std	Std
Std	Std	Std	Std	Std	Std
Std	Std	Std	Std	Std	Std
Opt	Opt	Opt	Opt	Opt	—
—	—	—	—	—	—
Opt	Opt	Opt	Opt	Opt	Std
Std	Std	Std	Std	Std	Std
Opt	Opt	Opt	Opt	Opt	Std
Opt	Opt*	Opt	Opt	Opt	Opt
Opt	Opt	Opt	Opt	Opt	Std
Std	Std	Std	Std	Std	Std
Std	Std	Std	Std	Std	Std
Std	Std	Std	Std	Std	Std
—	—	—	—	—	—
Std	Std	Std	Std	Std	Std
Opt	—	Opt	Opt	Opt	Opt
Opt	Opt	Std	Std	Std	Std
Std	Std	Std	Std	Std	Std
—	—	—	—	—	—
—	—	—	—	—	Opt
Opt	Opt	Opt	Opt	Opt	Opt
—	—	—	—	—	—
Opt	Opt	Opt	Opt	Opt	Opt
Std	Std	Std	Std	Std	—
Opt	Opt	Opt	Opt	Opt	—
—	—	—	—	—	Std
16.9 gpm (63.9 L/min.)	16.9 gpm (63.9 L/min.)	20.0 gpm (75.7 L/min.)	20.0 gpm (75.7 L/min.)	20.0 gpm (75.7 L/min.)	25.1 gpm (95.0 L/min.)
2987 psi (205.95 bar)	2987 psi (205.95 bar)	3045 psi (209.95 bar)	3045 psi (209.95 bar)	3045 psi (209.95 bar)	3045 psi (209.95 bar)
Opt	Opt	Opt	Opt	Opt	Opt
Std	Std	Std	Std	Std	Std
Opt	Opt	Opt	Opt	Opt	Opt
Std	Std	Std	Std	Std	Std

ELECTRIC

Machine: E10e

Machine: E19e

REVOLUTIONIZE THE WAY YOU WORK.

E10e AND E19e COMPACT EXCAVATORS

Get all the benefits of owning and operating emissions-free compact excavators, and take your equipment to new depths.

EXCEPTIONAL ELECTRICAL/ HYDRAULIC PERFORMANCE

With performance that equals their diesel-powered counterparts, these productive machines will revolutionize the way you work. The electrical motor delivers full torque, regardless of rpm, providing top productivity, smooth hydraulic control and on-demand multi-functioning performance with no noticeable power drop. An added benefit is that the cost to recharge the battery system is a fraction of the price for a diesel fill-up.

WORK TO NEW LIMITS.

With a compact footprint and zero emissions, these compact excavators can power through the work anywhere, anytime – while putting an end to the challenges of changing emissions standards. The E10e and E19e tackle tough jobs in small places – both indoors and outdoors – where intensive and costly manual labor is your other option. These machines are also quiet – enabling operation at any hour of the day, even in dense urban areas where noise regulations can limit work hours.



TAKE ADVANTAGE OF NEW BUSINESS OPPORTUNITIES.

A growing number of companies and individuals support eco-friendly jobsite practices, and many government agencies are adopting environmental, social and governance (ESG) principles that give priority to contractors with sustainable business practices. A battery-powered compact excavator in your fleet will ensure that you can confidently bid on these opportunities.

REDUCE MAINTENANCE COSTS.

The highly efficient electrical motors contain fewer parts, which significantly reduces maintenance and repair costs in addition to lost time due to service. The state-of-the-art lithium-ion batteries require no routine maintenance and have built-in protection against overcharging.

Machine: E10e



SPECIFICATIONS



Model		E10e	E19e
GENERAL	Operating Weight	2648 lb. (1201 kg)	4225 lb. (1916 kg)
	Ground Pressure	4.18 psi (28.8 kPa)	4.77 psi (32.9 kPa)
ELECTRICAL	Battery Type	Lithium Ion	Lithium Ion
	System Voltage	51.8 VDC	51.8 VDC
	Gross Battery Capacity	11.5 kWh	17.3 kWh
	Motor Type	Asynchronous	Asynchronous
	Motor Power	10.5 hp (7.5 kW)	13.4 hp (10.0 kW)
	Estimated Continuous Runtime	Up to 4 hr.	Up to 4 hr.
PERFORMANCE	Digging Force, Arm	1248 lbf. (5550 N)	2086 lbf. (9279 N)
	Digging Force, Bucket	1865 lbf. (8294 N)	4584 lbf. (20,835 N)
	Drawbar Pull	2227 lbf. (9905 N)	5299 lbf. (23,550 N)
	Travel Speed (low)	1.1 mph (1.8 km/hr.)	1.0 mph (1.7 km/hr.)
	Travel Speed (high)	1.8 mph (2.9 km/hr.)	2.2 mph (3.6 km/hr.)
HYDRAULIC SYSTEM	Pump Type	Triple Gear Pump	Triple Gear Pump
	Pump Capacity	6.6 gpm (25.0 L/min.)	9.2 gpm (35.1 L/min.)
	Auxiliary Flow	5.2 gpm (20.0 L/min.)	6.4 gpm (24.3 L/min.)
	Auxiliary Relief	2766 psi (191 bar)	2610 psi (180 bar)
SWING SYSTEM	Boom Swing (left)	67°	80°
	Boom Swing (right)	64°	60°
	Swing Speed	10.2 rpm	7.9 rpm
CHARGING	On-Board 110V	10-12 hr.	10-12 hr.
	On-Board 240V	10-12 hr.	10-12 hr.
	Off-Board 240V	1-2 hr.	1-2 hr.
	Standard On-Board Charging Cable	NEMA 5-15	NEMA 5-15
MACHINE FEATURES	ROPS/TOPS/FOPS Canopy	—	Std
	TOPS Operator Guard	Std	—
	Travel Motion Alarm	Std	Std
	Auto Idle	—	—
	Vinyl Seat	Std	Std
	Bobcat 5" Display	—	—
	Auto Two-Speed Travel	—	Std
	Auxiliary Hydraulics With Quick Couplers	Std	Std
	Mechanical X-Change Attachment Mounting System	—	—
	Dozer Blade	Std	Std
	Work Lights	Std	Std
	Battery/Hydraulic Motor With Shutdown	Std	Std
	Key Activation	Std	Std
	Additional Charge Cable Options	Opt	Opt
	Clamp	—	Opt



Certain specification(s) are based on engineering calculations and are not actual measurements. Specification(s) are provided for comparison purposes only and are subject to change without notice. Specification(s) for your individual Bobcat equipment will vary based on normal variations in design, manufacturing, operating conditions, and other factors.



Bobcat Company is a member of the Doosan Group. Doosan is a global leader in construction, grounds maintenance and material handling equipment, power and water solutions, and engineering that has proudly served customers and communities for more than a century. Bobcat®, the Bobcat logo and the colors of the Bobcat machine are registered trademarks of Bobcat Company in the United States and various other countries. ©2025 Bobcat Company. All rights reserved.

BOBCAT COMPANY • 250 EAST BEATON DRIVE • WEST FARGO, ND 58078 • [BOBCAT.COM](https://www.bobcat.com)

DOOSAN

B-1857 (10/25)
EP-8M-1025-22005-F