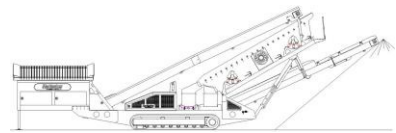


# ***SPECIFICATIONS***



# ***McCloskey*** ***S190***



**DESCRIPTION**

Heavy duty mobile screener with following features:

- 20x5 heavy duty high energy 2 bearing screenbox.
- 125Hp Cat engine.
- Track or wheel mobile.
- Integrated hydraulic folding stockpiling conveyors.
- Remote control tipping grid.
- Fast on site setup time – 10 minutes.

**DIMENSIONS AND WEIGHTS**

Length - transport all models	17.16m (56' - 4")
Width - transport all models	2.90m (9' - 6")
Height - transport track	3.40m (11' - 2")
Height - transport wheel	3.68m (12' - 1")
Weight - track	36,000 Kgs (79,366 lbs) - estimated
Weight - wheel	31,000 Kgs (68,343 lbs) - estimated

**CAPACITIES**

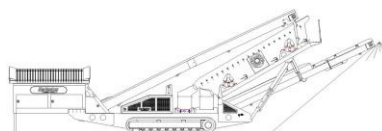
Diesel tank capacity	399 L (105 US gal)
Hydraulic tank capacity	630 L (166 US Gals)
Capacity - 12ft hopper	8.01 m <sup>3</sup> (10.48 yd <sup>3</sup> )
Capacity - 15ft hopper	10.01 m <sup>3</sup> (13.09 yd <sup>3</sup> )

**FEED CONVEYOR**

Belt width	1200mm (48")
Belt spec	Plain 500/3 6+3
Drive drum dia.	335mm (13.1")
Tail drum dia.	320mm (12.5")
Gearbox	Bonfig 805 W2
Gearbox ratio	24.2
Gearbox torque	7000Nm cont, 12500Nm max
Motor	Danfoss OMSS160
Flow rate	72.6 Lpm (19.2 US gpm)
Adjustable speed	YES
Maximum speed	18.75 rpm

**MAIN CONVEYOR**

Belt width	1050mm (42")
Belt spec	Plain 400/3 6+1.5
Drive drum dia.	285mm (11.2")
Tail drum dia.	270mm (10.6")
Motor	Danfoss OMV800
Flow rate	101.2 Lpm (26.7 US gpm)
Adjustable speed	OPTION
Maximum speed	126.5 rpm

**TAIL CONVEYOR**

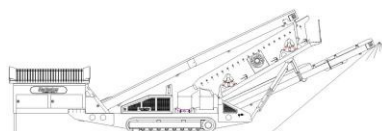
Stockpile height - track model	4638mm (15' - 3")
Stockpile height - wheel model	4905mm (16' - 1")
Belt width	1200mm (48")
Belt spec	Plain - 400/2 6+1.5
Drive drum dia.	285mm (11.2")
Tail drum dia.	270mm (10.6")
Motor	Danfoss OMV800
Flow rate	101.2 Lpm (26.2 US gpm)
Maximum speed	126.5 rpm

**SIDE CONVEYOR**

Stockpile height - track model	5100mm (16' - 9")
Stockpile height - wheel model	5370mm (17' - 7")
Belt width	800mm (32")
Belt spec	Chevron - 400/3 6+1.5
Drive drum dia.	285mm (11.2")
Tail drum dia.	270mm (10.6")
Motor	OMT400
Flow rate	50.6 Lpm (13.4 US gpm)
Adjustable speed	YES
Maximum speed	126.5 rpm

**SCREENBOX**

Dimensions - top deck	6100mm x 1524mm (20' x 5')
Dimensions - bottom deck	5490mm x 1524mm (18' x 5')
Bearing type	NSK 110mm bore
Screens - top deck	5' x 4' side tension - 5 off
Screens - bottom deck	5' x 6' end tension - 3 off
Tensioning - top deck	Quick release pin and wedge
Tensioning - bottom deck	Curved tension bar and adjuster
Screen angle	20 to 30 deg
Screen motor	DBH MCC2213 (85.7cc/rev)
Drive system	Direct drive with HRC180 coupling
Hydraulic flowrate	101.2 Lpm (26.7 US gpm)
Speed adjustable	YES - Pressure compensated FCV
Screen stroke adjustable	6 - 10mm maximum
Screen shaft speed	1130 - 950 rpm
Screen 'g' force	4.29 - 5.05 g

**POWERUNIT AND HYDRAULICS**

Engine	CAT 3054 ATAAC (Teir II)
Engine power	125 HP
Engine speed	2200 rpm
Flywheel Pump 1	DBH 5046,5046,5033
LH PTO Pump 2	DBH 5023,5023
RH PTO Pump 3	DBH 2SPA11
Total system flow	419 L (110.7 US Gpm)
Hydraulic tank capacity	630 L (166 US Gals)
Hydraulic tank ratio	1.51 : 1
Hydraulic Oil cooler	YES

**ELECTRIC HYDRAULIC POWERUNIT (with wheeled option only)**

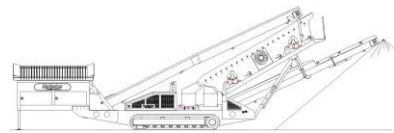
2 Electric motors	37KW
Frequency	50hz or 60hz
Voltage	3 phase 415V or customer specific
Control panel can be supplied upon request	

**ELECTRICS**

Emergency stops	6 off, 1 feeder, 2 powerunit RH&LH, 2 chassis front RH&LH, 1 Walkway
Chassis cabling	Armored cable
Start Siren	YES - 10 sec delay
Engine shutdowns:	Low oil pressure High water temp Air filter blockage (selectable) Fuel contamination Low hydraulic tank level
Engine room light	YES
Remote tipping grid	YES - 2 function timed
Radio control tracks	optional - Hetronic system
Pendant track control	YES - plugged in at feeder end

**TRACKS**

Width	500mm (19.7")
Length	3800mm (12' - 6") crs
Height	798mm (31.4")
Gearbox	Bonfiglioli 709
Ratio	148:1
Motor	Rexroth 90
Speed max	1.14 Kph (0.71 Mph)
Flow rate	101.2 Lpm (26.7 US gpm)
Dual speed	<b>TBC</b>
Attachment to chassis	Bolt On for quick change

**WHEELS**

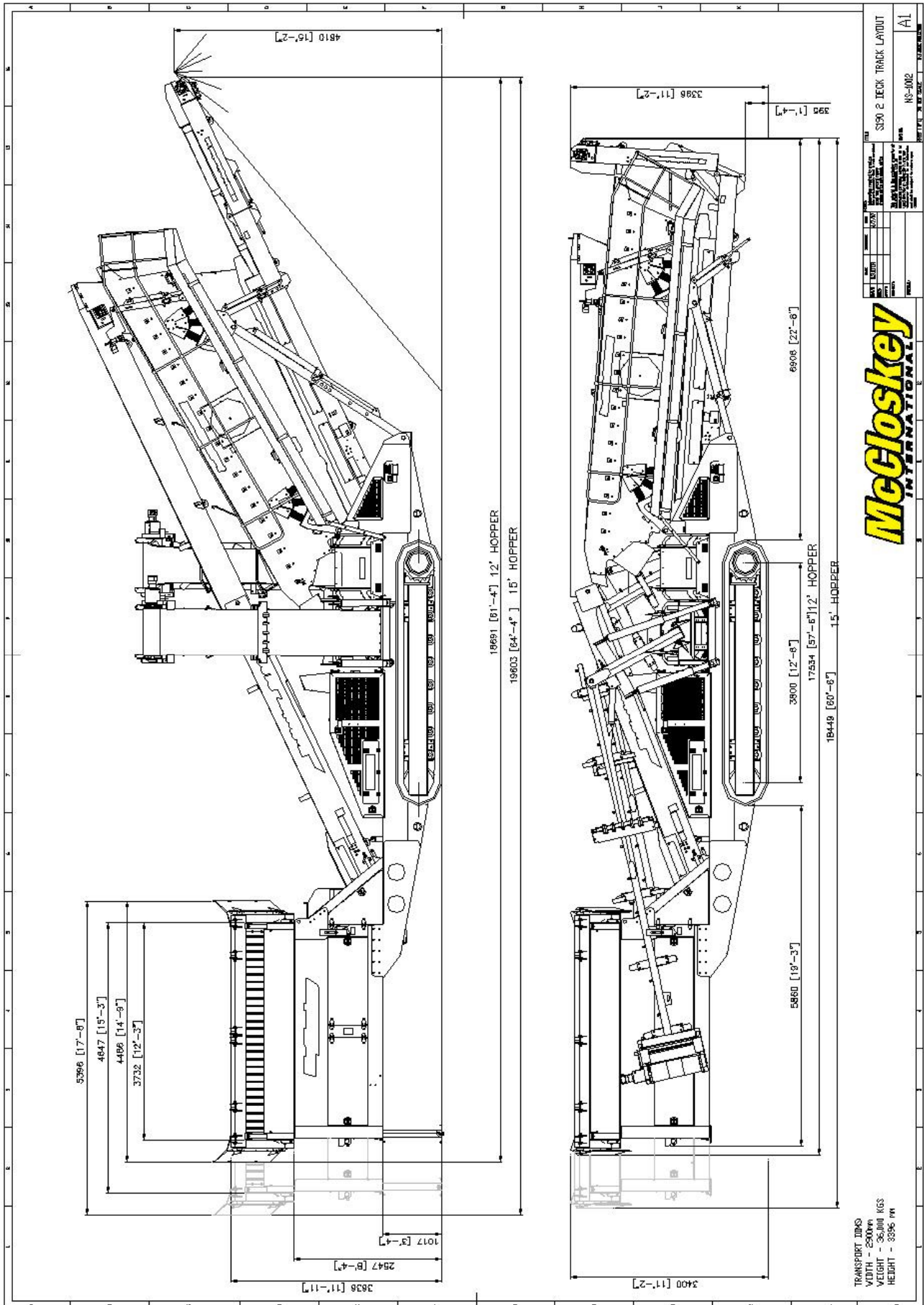
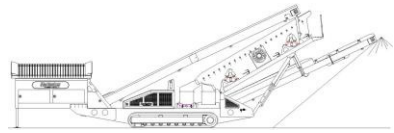
Width	2900mm (9' - 6")
Axle centers	1360mm (4' - 6")
Wheels	235/75/R17.5 dual
Axles	3 off
Brakes	YES
Spring suspension	YES
Mudguards	YES
Handbrake	OPTION
ABS	OPTION

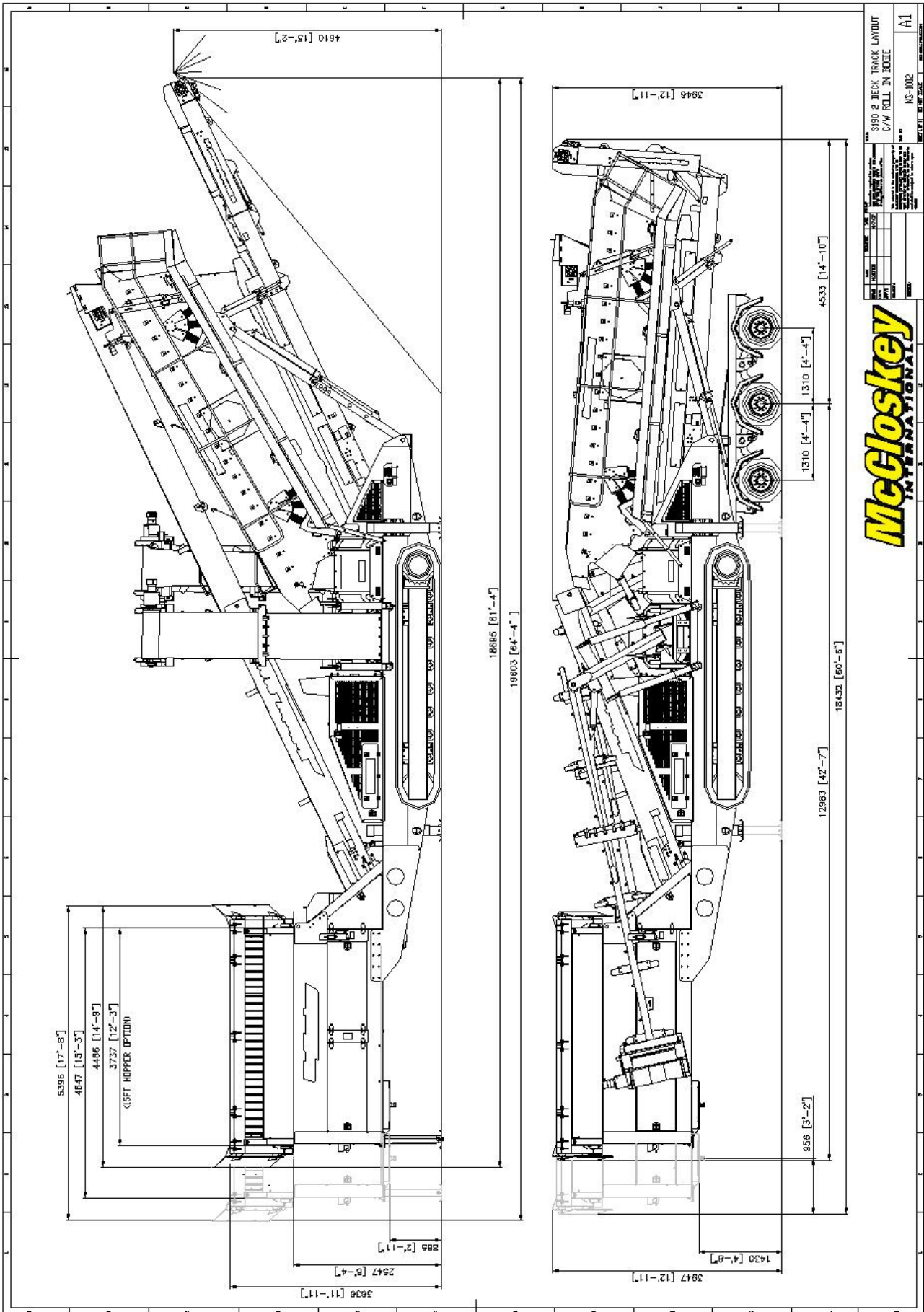
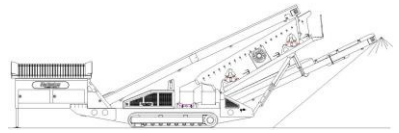
**OPTIONS**

Single or double deck live head  
Roll-in bogie system  
15ft Hopper  
3 Deck Dry  
3 Deck Rinser  
Crusher chute (available with 15ft hopper only)  
Radio remote control

**SAFETY FEATURES**

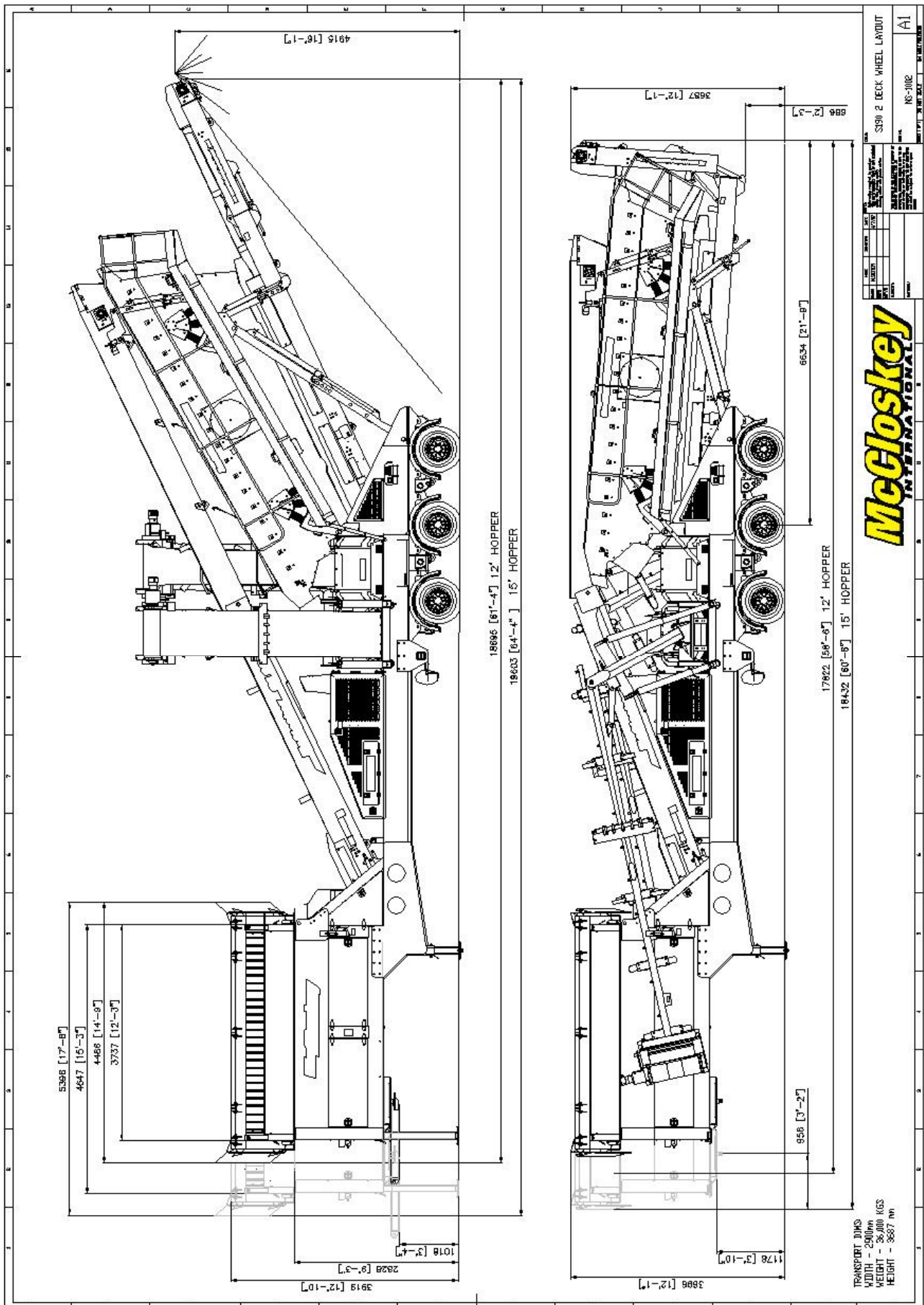
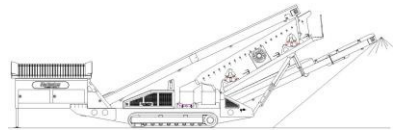
External belt alignment points  
External grease points  
Engine safety shutdown systems  
Full safety guarding for nip points



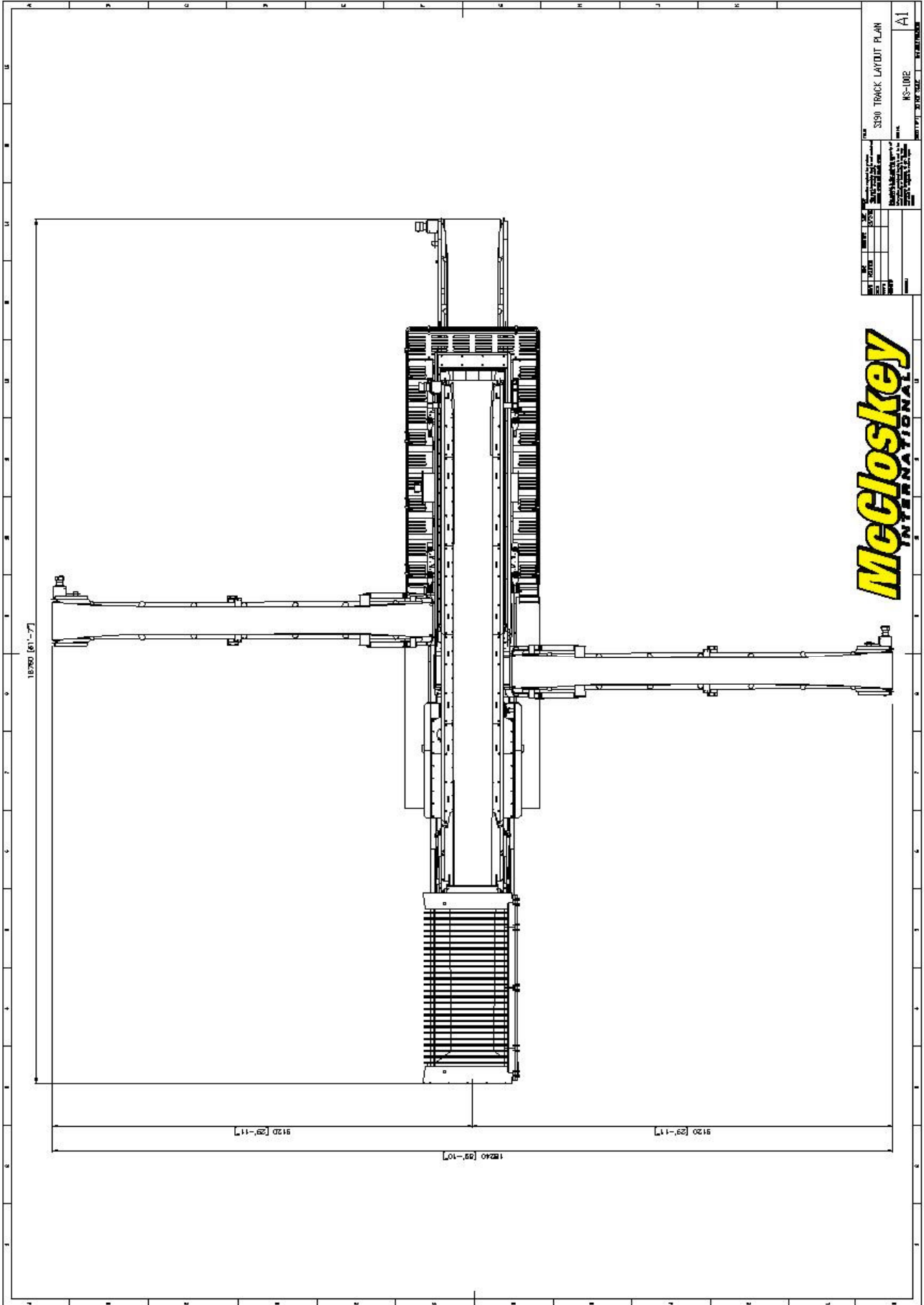
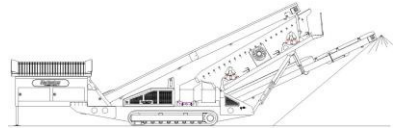


DATE	BY	CHECKED	APPROVED
S190 3 BECK TRACK LAYOUT C/W ROLL IN HOSE			
NS-1002			A1

**McCloskey**  
INTERNATIONAL

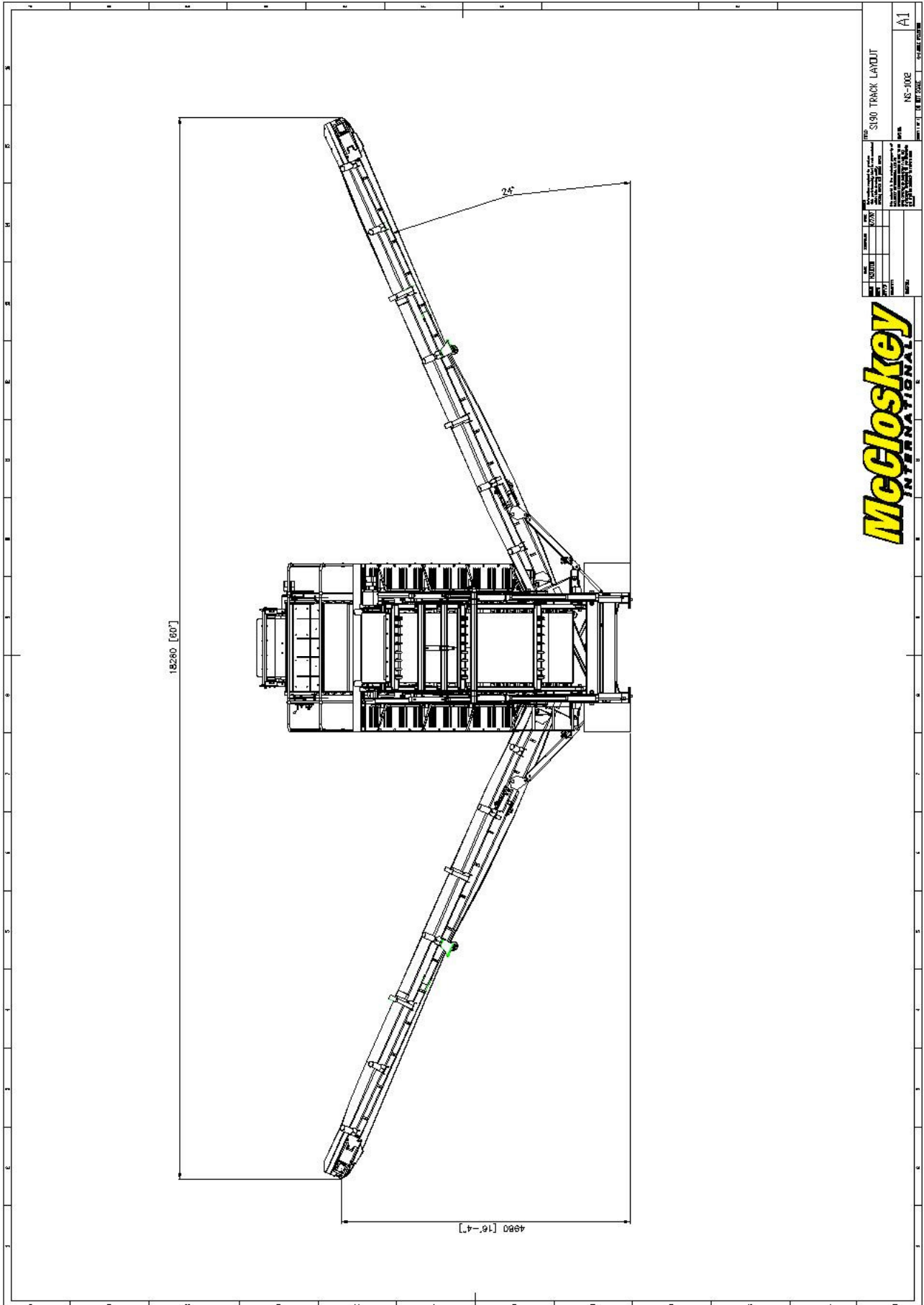
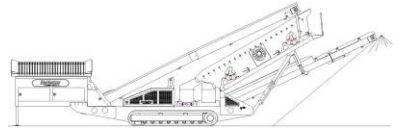


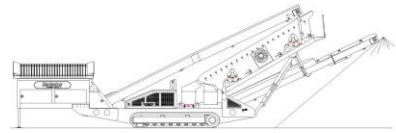




3391 TRACK LAYOUT PLAN		A1
DATE	NOV 06 2006	
BY	MS-1002	
CHECKED		
SCALE		
PROJECT		
DRAWN		
REVISED		
APPROVED		

**McCloskey**  
INTERNATIONAL

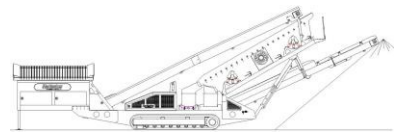




# ***SPECIFICATIONS***



## ***McCloskey*** ***S190 3-Deck***

**DESCRIPTION**

Heavy duty mobile screener with following features:

- 20x5 heavy duty high energy 2 bearing 3 deck screenbox.
- 125Hp Cat engine.
- Track or wheel mobile.
- Integrated hydraulic folding stockpiling conveyors.
- 3 Deck auxiliary conveyor attaches to machine for one unit transport.
- Remote control tipping grid.
- Fast on site setup time – 15 minutes.

**DIMENSIONS AND WEIGHTS**

Length - transport all models	17.16m (56' - 4")
Width - transport all models	3.06m (10')
Height - transport track	3.45m (11' - 4")
Height - transport wheel	3.73m (12' - 3")
Weight - track	36,500 Kgs (80,468 lbs) - estimated
Weight - wheel	33,000 Kgs (72,752 lbs) - estimated

**CAPACITIES**

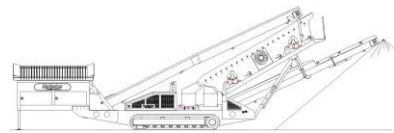
Diesel tank capacity	399 L (105 gal)
Hydraulic tank capacity	630 L (166 Gals)
Capacity - 12ft hopper	8.01 m <sup>3</sup> (10.48 yd <sup>3</sup> )
Capacity - 15ft hopper	10.01 m <sup>3</sup> (13.09 yd <sup>3</sup> )

**FEED CONVEYOR**

Belt width	1200mm (48")
Belt spec	Plain 500/3 6+3
Drive drum dia.	335mm (13.1")
Tail drum dia.	320mm (12.5")
Gearbox	Bonfig 805 W2
Motor	160cc motor
Flow rate	72.6 Lpm (19.2 US gpm)
Adjustable speed	YES
Maximum speed	18.75 rpm

**MAIN CONVEYOR**

Belt width	1050mm (42")
Belt spec	Plain 400/3 6+1.5
Drive drum dia.	285mm (11.2")
Tail drum dia.	270mm (10.6")
Motor	630 cc motor
Flow rate	101.2 Lpm (26.7 US gpm)
Adjustable speed	OPTION
Maximum speed	160 rpm

**TAIL CONVEYOR**

Stockpile height - track model	4638mm (15' - 3")
Stockpile height - wheel model	4905mm (16' - 1")
Belt width	1200mm (48")
Belt spec	Plain - 400/2 6+1.5
Drive drum dia.	285mm (11.2")
Tail drum dia.	270mm (10.6")
Motor	800 cc motor
Flow rate	101.2 Lpm (26.7 US gpm)
Maximum speed	126.5 rpm

**SIDE CONVEYOR**

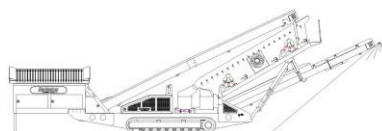
Stockpile height - track model	5100mm (16' - 9")
Stockpile height - wheel model	5370mm (17' - 7")
Belt width	800mm (32")
Belt spec	Chevron - 400/3 6+1.5
Drive drum dia.	285mm (11.2")
Tail drum dia.	270mm (10.6")
Motor	400 cc motor
Flow rate	50.6 Lpm (13.4 US gpm)
Adjustable speed	YES
Maximum speed	126.5 rpm

**3 DECK TRANSFER CONVEYOR**

Belt width	650mm (26")
Belt spec	Plain 400/3 4+2
Drive drum dia.	200mm (8")
Tail drum dia.	200mm (8")
Motor	400 cc motor
Flow rate	50.6 Lpm (13.4 US gpm)
Adjustable speed	YES
Maximum speed	126.5 rpm

**3 DECK AUXILLARY CONVEYOR**

Stockpile height - track model	4700mm (15.5')
Belt width	500mm (20")
Belt spec	Chevron - 400/3 6+1.5
Drive drum dia.	293mm (11.5")
Tail drum dia. (spoked)	270mm (10.6")
Motor	400 cc motor
Flow rate	50.6 Lpm (13.4 US gpm)
Adjustable speed	YES
Maximum speed	126.5 rpm

**SCREENBOX**

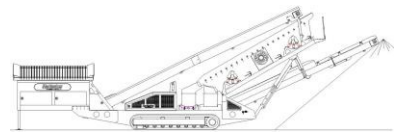
Dimensions - top deck	6100mm x 1524mm (20' x 5')
Dimensions - middle deck	6100mm x 1524mm (20' x 5')
Dimensions - bottom deck	5490mm x 1524mm (18' x 5')
Bearing type 3 Deck	NSK 130mm bore
Screens - top deck	5' x 4' side tension - 5 off
Screens - middle deck	5' x 4' side tension - 5 off
Screens - bottom deck	5' x 6' end tension - 3 off
Tensioning - top deck	Quick release pin and wedge
Tensioning - middle deck	Quick release pin and wedge
Tensioning - bottom deck	Curved tension bar and adjuster
Screen angle	20 to 30 deg
Screen motor	85.7cc/rev
Drive system	Direct drive with HRC180 coupling
Hydraulic flowrate	101.2 Lpm (26.7 US gpm)
Speed adjustable	YES - Pressure compensated FCV
Screen stroke adjustable	6 - 10mm maximum
Screen shaft speed	1130 - 950 rpm
Screen 'g' force	4.29 - 5.05 g

**POWERUNIT AND HYDRAULICS**

Engine	CAT 4.4 (Teir III)
Engine power	125 HP
Engine speed	2200 rpm
Flywheel Pump 1	DBH 5046,5046,5033
LH PTO Pump 2	DBH 5023,5023
RH PTO Pump 3	DBH 2SPA11
Total system flow	419 L (110.7 US Gpm)
Hydraulic tank capacity	630 L (166 US Gals)
Hydraulic tank ratio	1.51 : 1
Hydraulic Oil cooler	YES

**ELECTRICS**

Emergency stops	6 off, 1 feeder, 2 powerunit RH&LH, 2 chassis front RH&LH, 1 Walkway
Chassis cabling	Armored cable
Start Siren	YES - 10 sec delay
Engine shutdowns:	Low oil pressure High water temp Air filter blockage (selectable) Fuel contamination Low hydraulic tank level
Engine room light	YES
Remote tipping grid	YES - 2 function timed
Radio control tracks	optional - Hetronic system
Pendant track control	YES - plugged in at feeder end

**TRACKS**

Width	500mm (19.7")
Length	3800mm (12' - 6") crs
Height	798mm (31.4")
Gearbox	Bonfiglioli 709
Ratio	148:1
Motor	Rexroth 90
Speed max	1.14 Kph (0.71 Mph)
Flow rate	101.2 Lpm (26.7 US gpm)
Attachment to chassis	Bolt On for quick change

**WHEELS**

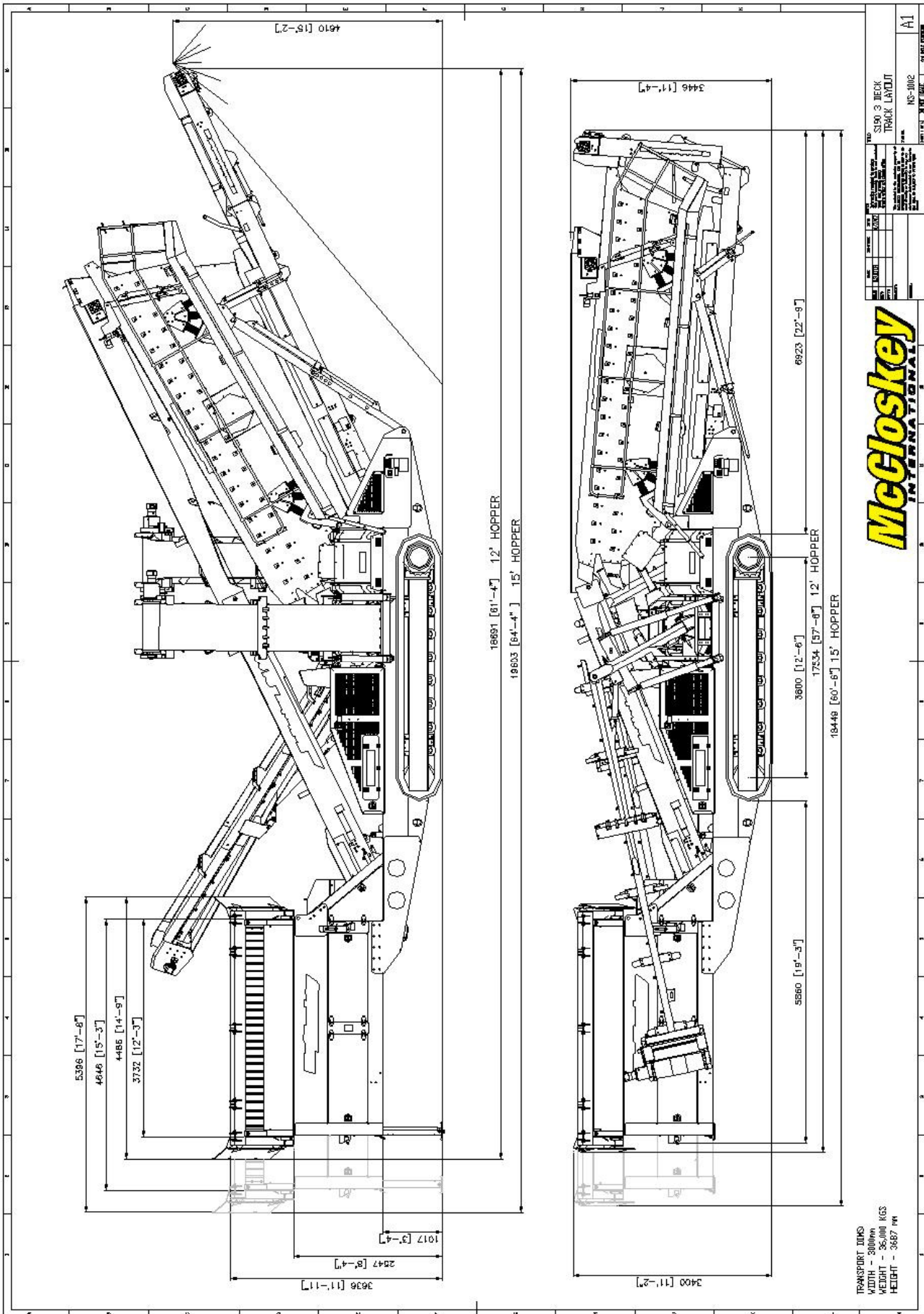
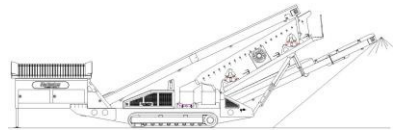
Width	2900mm (9' - 6")
Axle centers	1360mm (4' - 6")
Wheels	235/75/R17.5 dual
Axles	3 off
Brakes	YES
Spring suspension	YES
Mudguards	YES
Handbrake	OPTION
ABS	OPTION

**OPTIONS**

Single or double deck live head  
Roll-in bogie system  
15ft Hopper  
3 Deck Rinser  
Crusher chute (available with 15ft hopper only)  
Radio remote control

**SAFETY FEATURES**

External belt alignment points  
External grease points  
Engine safety shutdown systems  
Full safety guarding for nip points



REV	DATE	BY	CHKD	APP'D

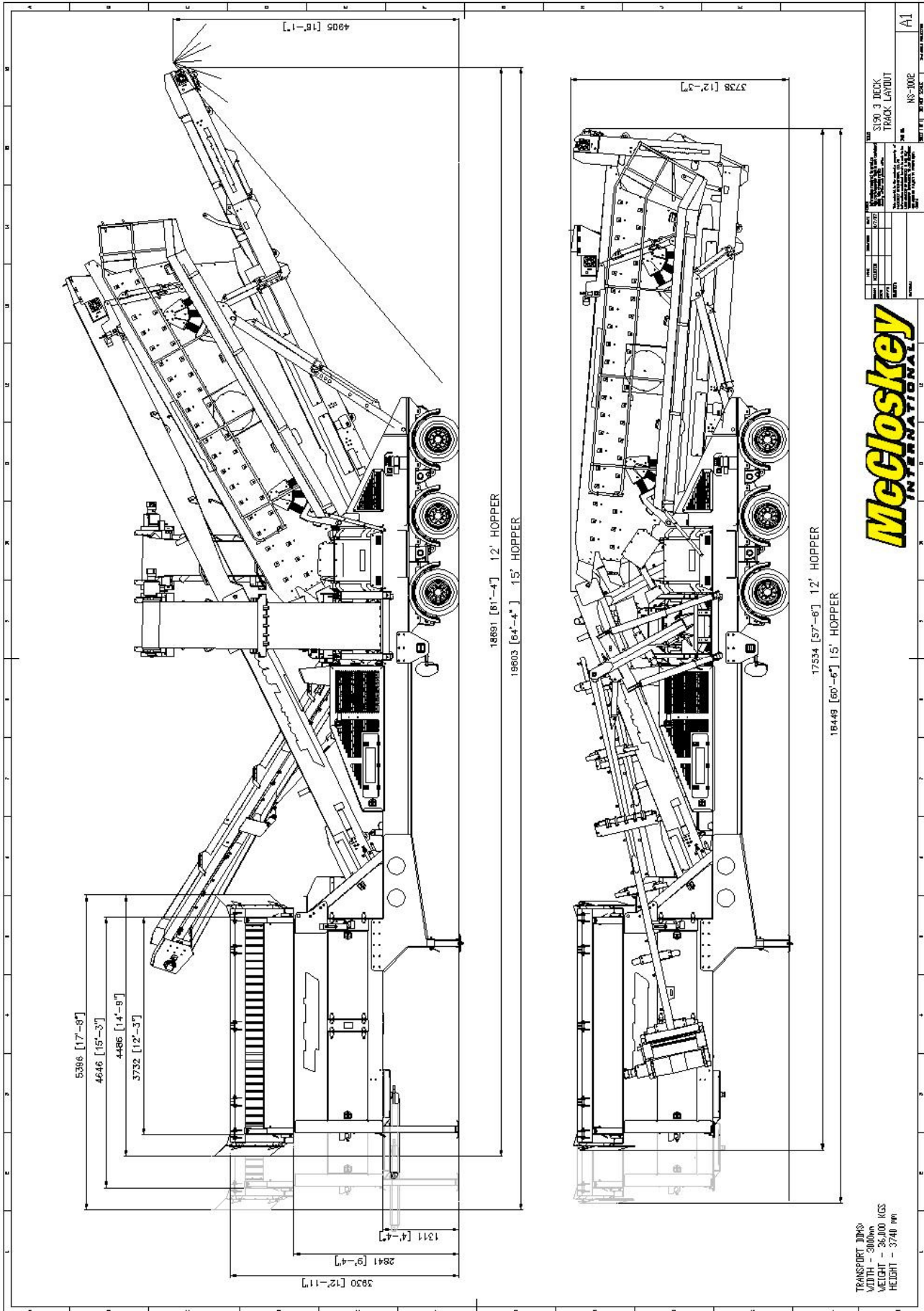
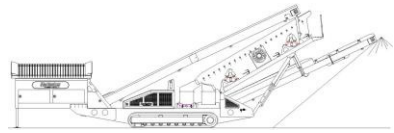
**McCloskey**  
INTERNATIONAL

S190 3 BECK  
TRACK LAYOUT  
NS-3002

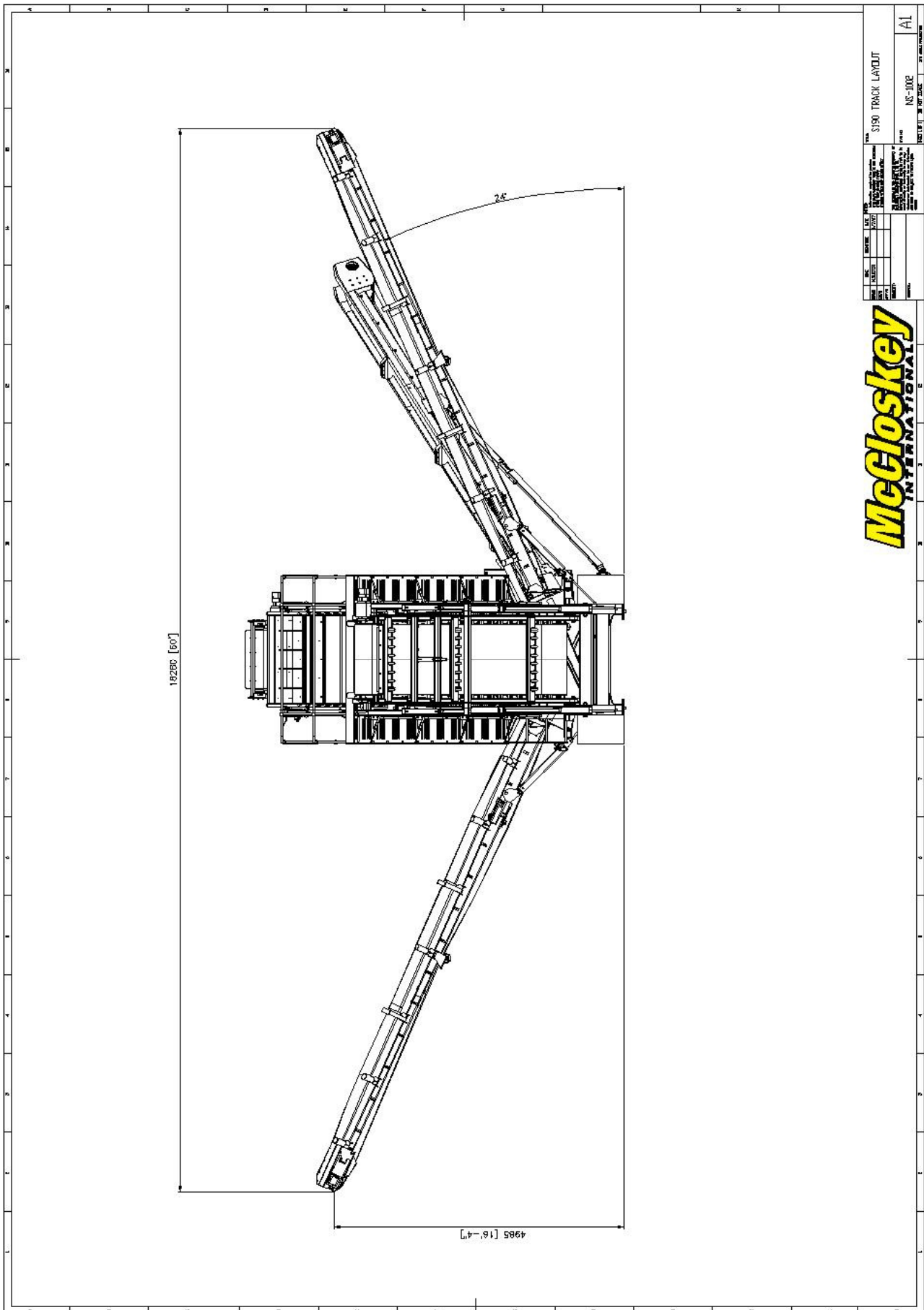
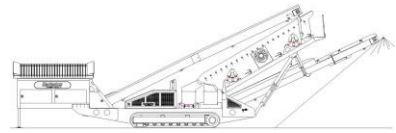
A1

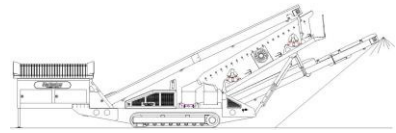




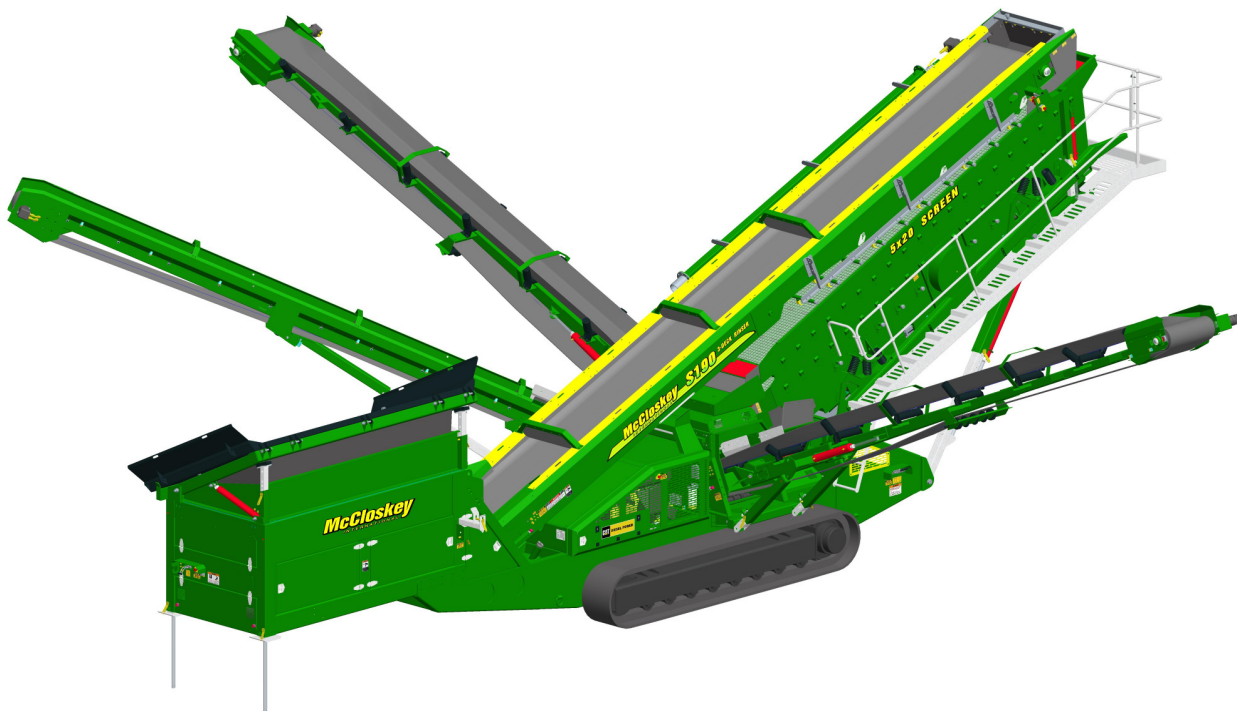




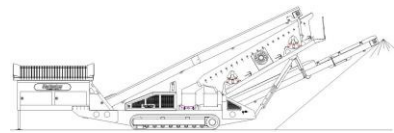




# ***SPECIFICATIONS***



# ***McCloskey*** ***S190 Rinser***



**DESCRIPTION**

Heavy duty mobile screener with following features:

- 20x5 heavy duty high energy 2 bearing rinsler screenbox.
- 125Hp Cat engine.
- Track or wheel mobile.
- Integrated hydraulic folding stockpiling conveyors.
- On the 3 deck 3rd Deck auxiliary conveyor attaches to machine for one unit transport.
- Remote control tipping grid.
- Fast on site setup time – 10 minutes (2 Deck machine).
- Recommended flow and pressure
  - o 3800 to 4500 lpm (1000 to 1200 us gal/min)
  - o 1.75 to 2 bar (25 to 30 psi)

**DIMENSIONS AND WEIGHTS**

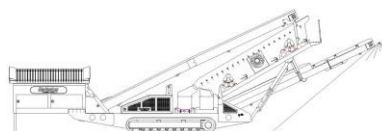
Length - transport all models	17.16m (56' - 4")
Width - transport all models	3.0m (9' - 10")
Height - transport track	3.45m (11' - 4")
Height - transport wheel	3.68m (12' - 1")
Weight – 2 deck track	36,000 Kgs (79,366 lbs) - estimated
Weight – 3 deck track	36,500 Kgs (80,468 lbs) - estimated
Weight – 2 deck wheel	31,000 Kgs (68,343 lbs) - estimated
Weight – 3 deck wheel	33,000 Kgs (72,752 lbs) - estimated

**CAPACITIES**

Diesel tank capacity	399 L (105 US gal)
Hydraulic tank capacity	630 L (166 US Gals)
Capacity - 12ft hopper	8.01 m <sup>3</sup> (10.48 yd <sup>3</sup> )
Capacity - 15ft hopper	10.01 m <sup>3</sup> (13.09 yd <sup>3</sup> )

**FEED CONVEYOR**

Belt width	1200mm (48")
Belt spec	Plain 500/3 6+3
Drive drum dia.	335mm (13.1")
Tail drum dia.	320mm (12.5")
Gearbox	Bonfig 805 W2
Gearbox ratio	24.2
Gearbox torque	7000Nm cont, 12500Nm max
Motor	Danfoss OMSS160
Flow rate	72.6 Lpm (19.2 US gpm)
Adjustable speed	YES
Maximum speed	18.75 rpm

**MAIN CONVEYOR**

Belt width	1050mm (42")
Belt spec	Plain 400/3 6+1.5
Drive drum dia.	285mm (11.2")
Tail drum dia.	270mm (10.6")
Motor	Danfoss OMT800
Flow rate	101.2 Lpm (26.7 US gpm)
Adjustable speed	OPTION
Maximum speed	126.5 rpm

**SIDE CONVEYOR**

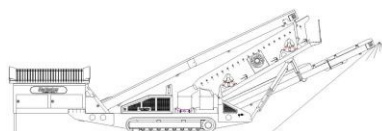
Stockpile height - track model	5100mm (16' - 9")
Stockpile height - wheel model	5370mm (17' - 7")
Belt width	800mm (32")
Belt spec	Chevron - 400/3 6+1.5
Drive drum dia.	285mm (11.2")
Tail drum dia.	270mm (10.6")
Motor	OMT400
Flow rate	50.6 Lpm (13.4 US gpm)
Adjustable speed	YES
Maximum speed	126.5 rpm

**3 DECK TRANSFER CONVEYOR (3 deck only)**

Belt width	650mm (26")
Belt spec	Plain 400/3 4+2
Drive drum dia.	200mm (8")
Tail drum dia.	200mm (8")
Motor	OMT400
Flow rate	50.6 Lpm (13.4 US gpm)
Adjustable speed	YES
Maximum speed	126.5 rpm

**3 DECK AUXILLARY CONVEYOR (3 deck only)**

Stockpile height - track model	4700mm (15.5')
Belt width	500mm (26")
Belt spec	Chevron - 400/3 6+1.5
Drive drum dia.	290mm (11.5")
Tail drum dia. (Spoked)	270mm (10.6")
Motor	OMT400
Flow rate	50.6 Lpm (13.4 US gpm)
Adjustable speed	YES
Maximum speed	126.5 rpm

**SCREENBOX**

Dimensions - top deck	6100mm x 1524mm (20' x 5')
Dimensions - middle deck (3 deck only)	6100mm x 1524mm (20' x 5')
Dimensions - bottom deck	5490mm x 1524mm (18' x 5')
Bearing type 3 Deck	NSK 130mm bore
Screens - top deck	5' x 4' side tension - 5 off
Screens - middle deck(3 deck only)	5' x 4' side tension - 5 off
Screens - bottom deck	5' x 6' end tension - 3 off
Tensioning - top deck	Quick release pin and wedge
Tensioning - middle deck	Quick release pin and wedge
Tensioning - bottom deck	Curved tension bar and adjuster
Screen angle	20 to 30 deg
Screen motor	DBH MCC2213 (85.7cc/rev)
Drive system	Direct drive with HRC180 coupling
Hydraulic flowrate	101.2 Lpm (26.7 US gpm)
Speed adjustable	YES - Pressure compensated FCV
Screen stroke adjustable	6 - 10mm maximum
Screen shaft speed	1130 - 950 rpm
Screen 'g' force	4.29 - 5.05 g

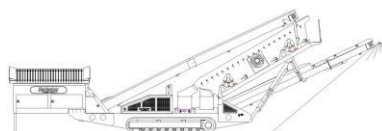
**POWERUNIT AND HYDRAULICS**

Engine	CAT 3054 ATAAC (Teir II)
Engine power	125 HP
Engine speed	2200 rpm
Hydraulic Oil cooler	YES

**ELECTRICS**

Emergency stops	6 off, 1 feeder, 2 powerunit RH&LH, 2 chassis front RH&LH, 1 Walkway
Chassis cabling	Armored cable
Start Siren	YES - 10 sec delay
Engine shutdowns:	Low oil pressure High water temp Air filter blockage (selectable) Fuel contamination Low hydraulic tank level
Engine room light	YES
Remote tipping grid	YES - 2 function timed
Radio control tracks	optional - Hetric system
Pendant track control	YES - plugged in at feeder end



**TRACKS**

Width	500mm (19.7")
Length	3800mm (12' - 6") crs
Height	798mm (31.4")
Gearbox	Bonfiglioli 709
Ratio	148:1
Motor	Rexroth 90
Speed max	1.14 Kph (0.71 Mph)
Flow rate	101.2 Lpm (26.7 US gpm)
Dual speed	<b>TBC</b>
Attachment to chassis	Bolt On for quick change

**RINSE KIT**

Main water supply pipe	150mm (6") diameter
Wash box lining	25mm (1") rubber wear lining
Wash box spray pipe	6 brass nozzles 200/80
Top deck spray pipes	10 off
Top deck spray nozzles	55 off 8mm Meister Uni-Duse adjustable
Bottom deck spray pipes	8 off
Bottom deck spray nozzles	44 off 8mm Meister Uni-Duse adjustable
Bottom deck Catchbox	6mm (1/4") rubber lined
Bottom deck exit	255mm (10") diameter flange 2 off

**WHEELS**

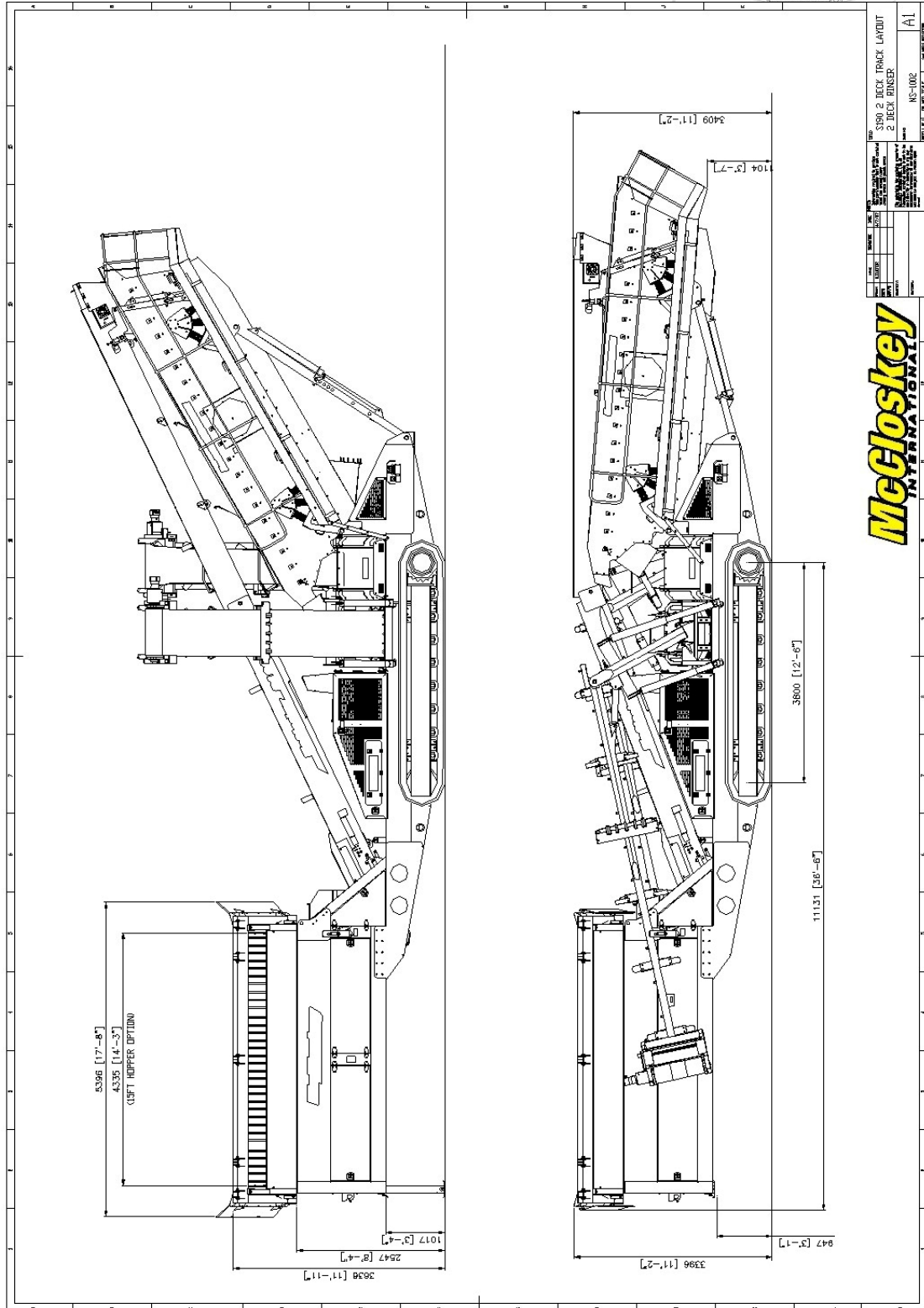
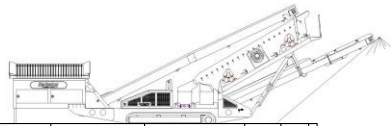
Width	2900mm (9' - 6")
Axle centers	1360mm (4' - 6")
Wheels	235/75/R17.5 dual
Axles	3 off
Brakes	YES
Spring suspension	YES
Mudguards	YES
Handbrake	OPTION
ABS	OPTION

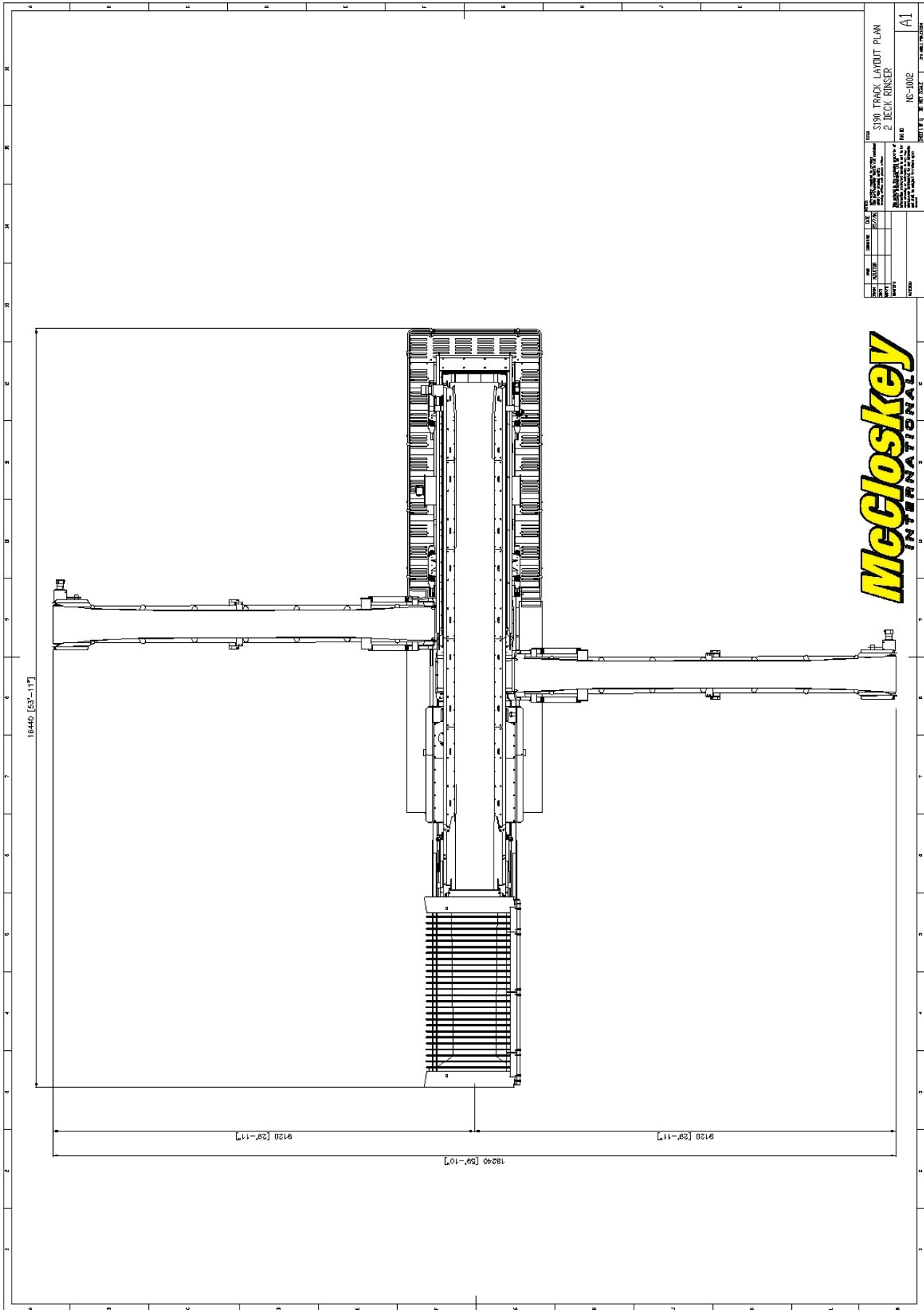
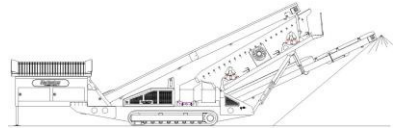
**OPTIONS**

Single or double deck live head
Roll-in bogie system
15ft Hopper
Crusher chute (available with 15ft hopper only)
Radio remote control
Catchbox division plate 1/3 – 2/3 or 2/3 – 1/3

**SAFETY FEATURES**

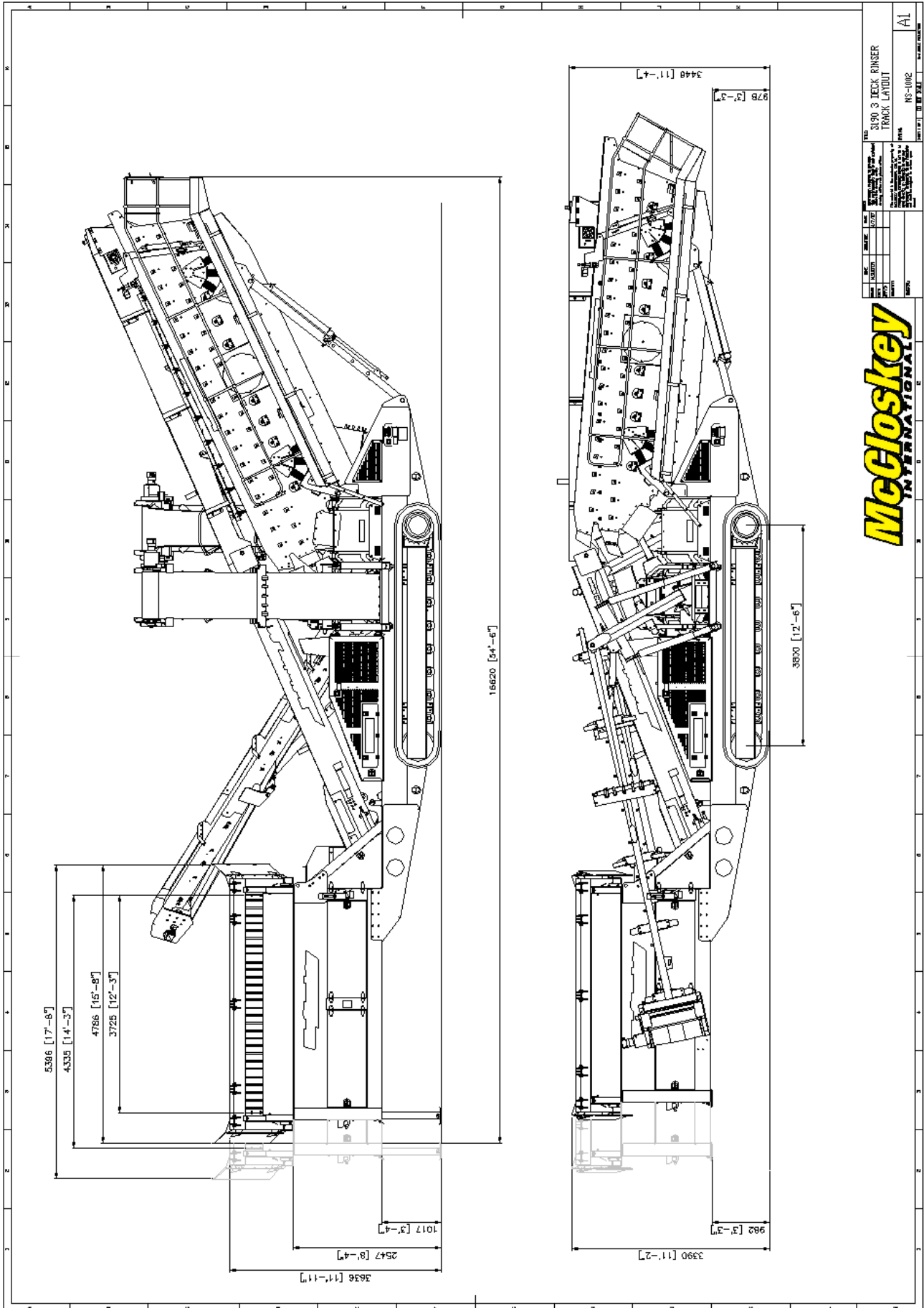
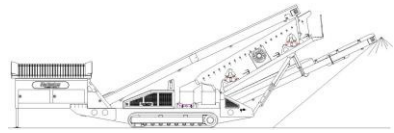
External belt alignment points
External grease points
Engine safety shutdown systems
Full safety guarding for nip points





**McCloskey**  
INTERNATIONAL

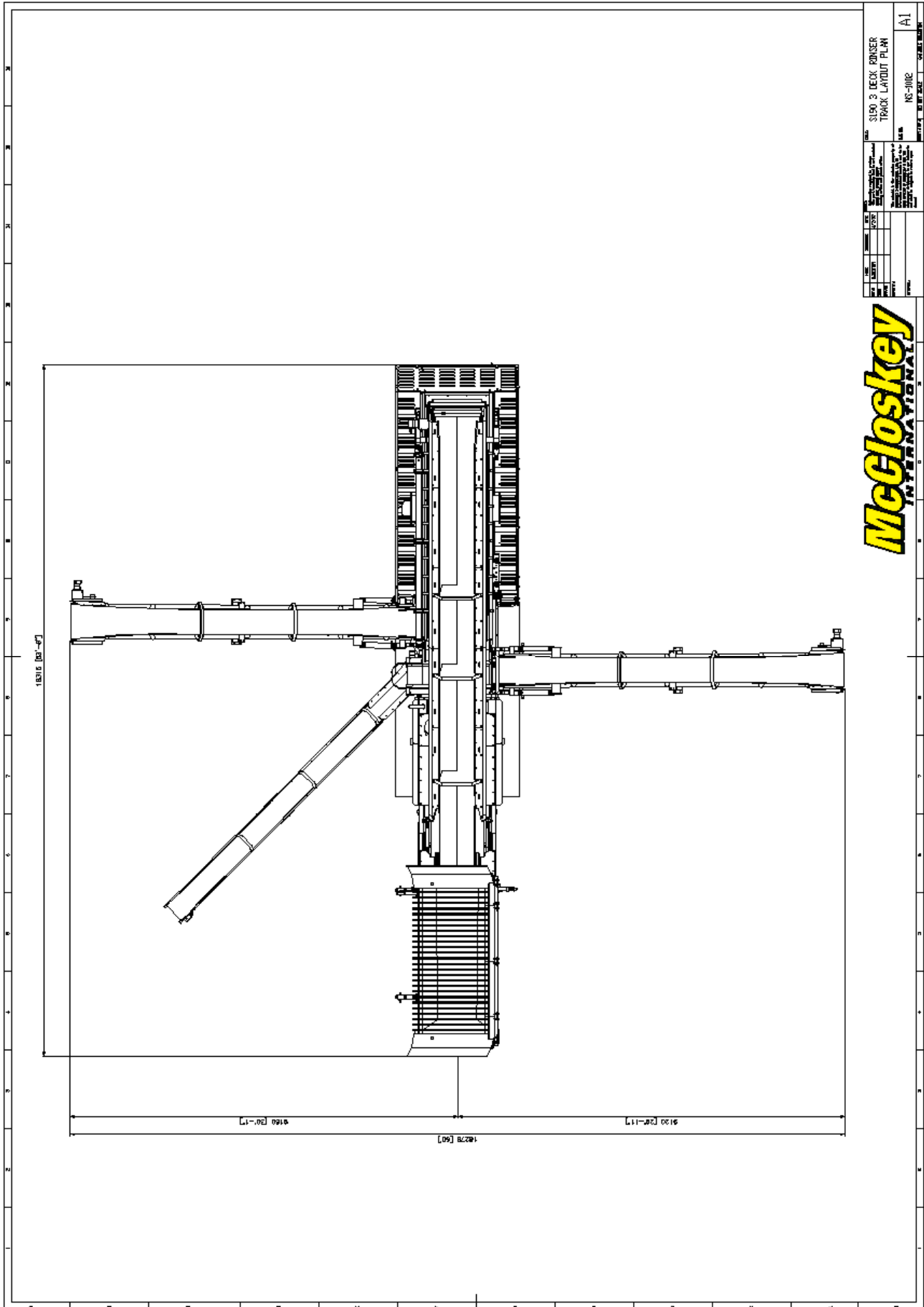
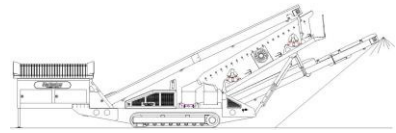
<b>S190 TRACK LAYOUT PLAN</b> <b>2 DECK RINSER</b>		NS-1002 A1
DATE: 10/20/07 DRAWN BY: [Name] CHECKED BY: [Name]	PROJECT: [Name] CLIENT: [Name]	



TITLE		S190 RINSING MACHINE TRACK LAYOUT	
DATE	BY	DATE	BY
10/27/07	MS	10/27/07	MS
DESIGNED BY	MS	CHECKED BY	MS
DRAWN BY	MS	APPROVED BY	MS
SCALE	AS SHOWN	SCALE	AS SHOWN
SHEET NO. 1		TOTAL SHEETS 1	
PROJECT NO. NS-1002		PROJECT NAME	

# McCloskey

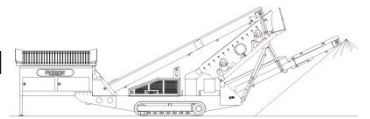
INTERNATIONAL



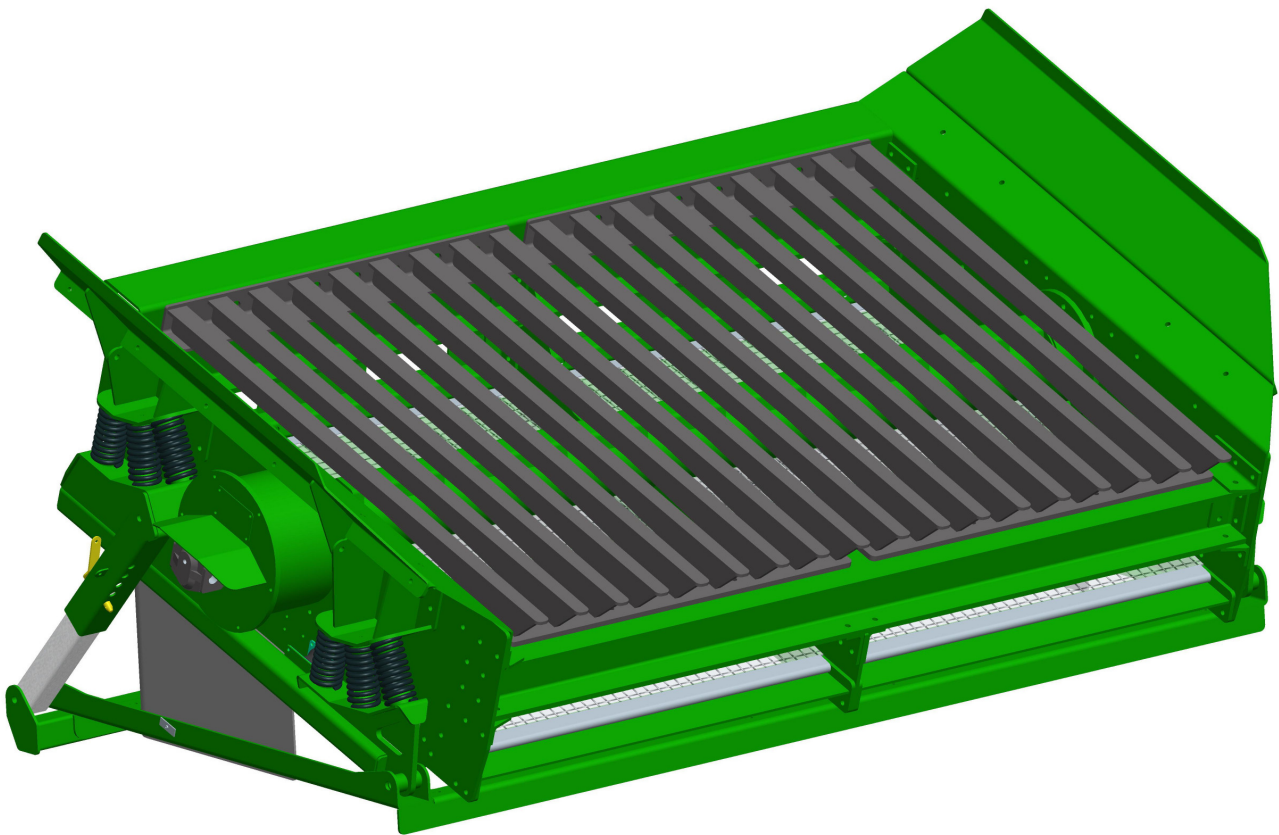
**McCloskey**  
 INTERNATIONAL

REV	DATE	DESCRIPTION
1	10/2007	ISSUE FOR PRODUCTION
2	10/2007	ISSUE FOR PRODUCTION
3	10/2007	ISSUE FOR PRODUCTION
4	10/2007	ISSUE FOR PRODUCTION
5	10/2007	ISSUE FOR PRODUCTION
6	10/2007	ISSUE FOR PRODUCTION
7	10/2007	ISSUE FOR PRODUCTION
8	10/2007	ISSUE FOR PRODUCTION
9	10/2007	ISSUE FOR PRODUCTION
10	10/2007	ISSUE FOR PRODUCTION
11	10/2007	ISSUE FOR PRODUCTION
12	10/2007	ISSUE FOR PRODUCTION
13	10/2007	ISSUE FOR PRODUCTION
14	10/2007	ISSUE FOR PRODUCTION
15	10/2007	ISSUE FOR PRODUCTION
16	10/2007	ISSUE FOR PRODUCTION
17	10/2007	ISSUE FOR PRODUCTION
18	10/2007	ISSUE FOR PRODUCTION
19	10/2007	ISSUE FOR PRODUCTION
20	10/2007	ISSUE FOR PRODUCTION
21	10/2007	ISSUE FOR PRODUCTION
22	10/2007	ISSUE FOR PRODUCTION
23	10/2007	ISSUE FOR PRODUCTION
24	10/2007	ISSUE FOR PRODUCTION
25	10/2007	ISSUE FOR PRODUCTION
26	10/2007	ISSUE FOR PRODUCTION
27	10/2007	ISSUE FOR PRODUCTION
28	10/2007	ISSUE FOR PRODUCTION
29	10/2007	ISSUE FOR PRODUCTION
30	10/2007	ISSUE FOR PRODUCTION
31	10/2007	ISSUE FOR PRODUCTION
32	10/2007	ISSUE FOR PRODUCTION
33	10/2007	ISSUE FOR PRODUCTION
34	10/2007	ISSUE FOR PRODUCTION
35	10/2007	ISSUE FOR PRODUCTION
36	10/2007	ISSUE FOR PRODUCTION
37	10/2007	ISSUE FOR PRODUCTION
38	10/2007	ISSUE FOR PRODUCTION
39	10/2007	ISSUE FOR PRODUCTION
40	10/2007	ISSUE FOR PRODUCTION
41	10/2007	ISSUE FOR PRODUCTION
42	10/2007	ISSUE FOR PRODUCTION
43	10/2007	ISSUE FOR PRODUCTION
44	10/2007	ISSUE FOR PRODUCTION
45	10/2007	ISSUE FOR PRODUCTION
46	10/2007	ISSUE FOR PRODUCTION
47	10/2007	ISSUE FOR PRODUCTION
48	10/2007	ISSUE FOR PRODUCTION
49	10/2007	ISSUE FOR PRODUCTION
50	10/2007	ISSUE FOR PRODUCTION
51	10/2007	ISSUE FOR PRODUCTION
52	10/2007	ISSUE FOR PRODUCTION
53	10/2007	ISSUE FOR PRODUCTION
54	10/2007	ISSUE FOR PRODUCTION
55	10/2007	ISSUE FOR PRODUCTION
56	10/2007	ISSUE FOR PRODUCTION
57	10/2007	ISSUE FOR PRODUCTION
58	10/2007	ISSUE FOR PRODUCTION
59	10/2007	ISSUE FOR PRODUCTION
60	10/2007	ISSUE FOR PRODUCTION
61	10/2007	ISSUE FOR PRODUCTION
62	10/2007	ISSUE FOR PRODUCTION
63	10/2007	ISSUE FOR PRODUCTION
64	10/2007	ISSUE FOR PRODUCTION
65	10/2007	ISSUE FOR PRODUCTION
66	10/2007	ISSUE FOR PRODUCTION
67	10/2007	ISSUE FOR PRODUCTION
68	10/2007	ISSUE FOR PRODUCTION
69	10/2007	ISSUE FOR PRODUCTION
70	10/2007	ISSUE FOR PRODUCTION
71	10/2007	ISSUE FOR PRODUCTION
72	10/2007	ISSUE FOR PRODUCTION
73	10/2007	ISSUE FOR PRODUCTION
74	10/2007	ISSUE FOR PRODUCTION
75	10/2007	ISSUE FOR PRODUCTION
76	10/2007	ISSUE FOR PRODUCTION
77	10/2007	ISSUE FOR PRODUCTION
78	10/2007	ISSUE FOR PRODUCTION
79	10/2007	ISSUE FOR PRODUCTION
80	10/2007	ISSUE FOR PRODUCTION
81	10/2007	ISSUE FOR PRODUCTION
82	10/2007	ISSUE FOR PRODUCTION
83	10/2007	ISSUE FOR PRODUCTION
84	10/2007	ISSUE FOR PRODUCTION
85	10/2007	ISSUE FOR PRODUCTION
86	10/2007	ISSUE FOR PRODUCTION
87	10/2007	ISSUE FOR PRODUCTION
88	10/2007	ISSUE FOR PRODUCTION
89	10/2007	ISSUE FOR PRODUCTION
90	10/2007	ISSUE FOR PRODUCTION
91	10/2007	ISSUE FOR PRODUCTION
92	10/2007	ISSUE FOR PRODUCTION
93	10/2007	ISSUE FOR PRODUCTION
94	10/2007	ISSUE FOR PRODUCTION
95	10/2007	ISSUE FOR PRODUCTION
96	10/2007	ISSUE FOR PRODUCTION
97	10/2007	ISSUE FOR PRODUCTION
98	10/2007	ISSUE FOR PRODUCTION
99	10/2007	ISSUE FOR PRODUCTION
100	10/2007	ISSUE FOR PRODUCTION

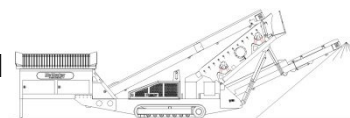
All specifications are current as of this printing, but are subject to change



# ***SPECIFICATIONS***



## ***McCloskey*** ***S130/190 Live Head***

**DESCRIPTION**

Heavy duty Live Head with following features:

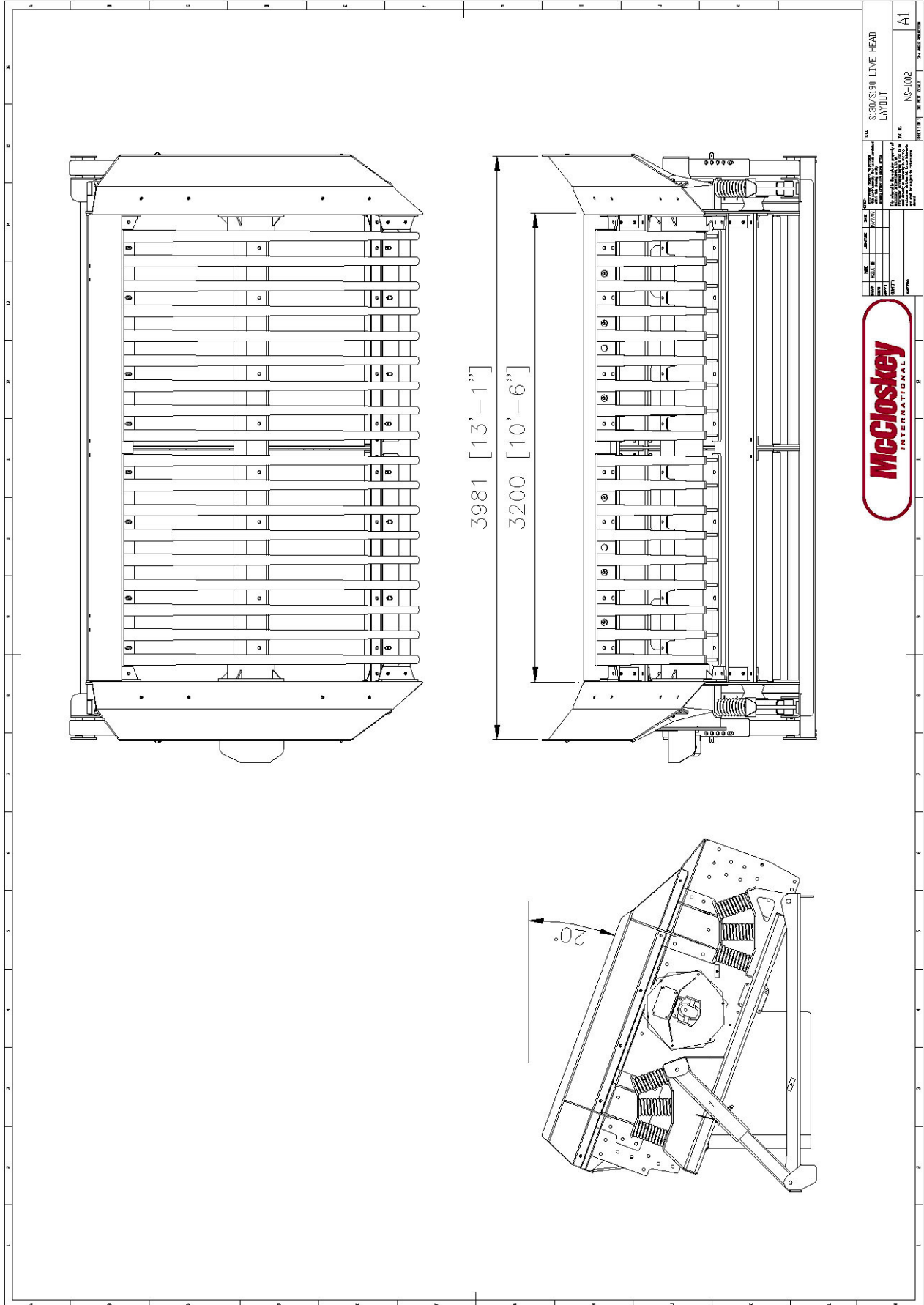
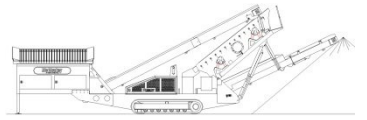
- Double deck Live Head.
- Heavy duty screen bearings.
- Side plates fold for transport to lower overall height.
- Hydraulic angle adjustment.
- Heavy duty Hardox bofor top deck screens
- End tensioned mesh bottom deck.
- Independent mounting frame to attach direct to S Series machines.

**SPECIFICATIONS**

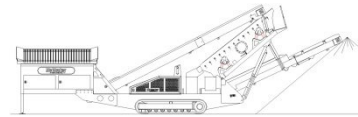
Dimensions - top deck	2150mm x 3200mm (7' x 10.5')
Dimensions - bottom deck	1930mm x 3200mm (6.3' x 10.5')
Bearing type	NSK 110mm bore
Screens - top deck	7' x 5.25' bolted direct to frame
Screens - bottom deck	6.3' x 5.25' end tension - 2 off
Tensioning - top deck	Direct bolted to frame
Tensioning - bottom deck	Clamp and bolts.
Screen angle	10 to 20 deg
Screen motor (S190)	DBH MCC2213 (85.7cc/rev)
Screen motor (S130)	DBH MCC2208 (58.9cc/rev)
Drive system	Direct drive with HRC180 coupling
Hydraulic flowrate (S190)	101.2 Lpm (26.7 US gpm)
Hydraulic flowrate (S130)	72.6 Lpm (19.2 US gpm)
Speed adjustable	YES - Pressure compensated FCV
Screen stroke	5 - 6mm
Screen shaft speed	1130 rpm
Screen 'g' force	4.29 g
Feed height - Track maximum (20 deg)	4022mm
Feed height - Track minimum (10 deg)	3687mm
Feed height - Wheel maximum (20 deg)	4282mm
Feed height - Wheel minimum (10 deg)	3947mm

**OPTIONS**

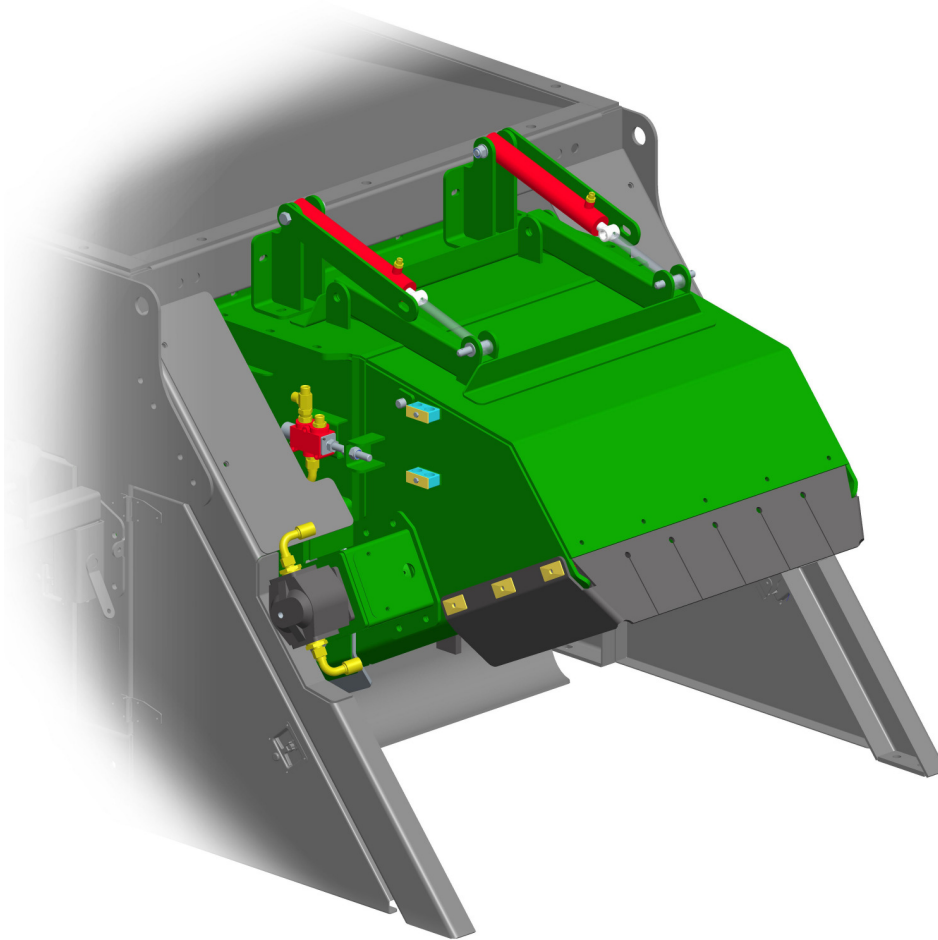
- Top deck punch plate
- Bottom deck punch plate
- Single deck (no bottom deck frame structure fitted)



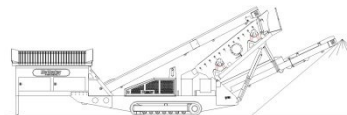




# ***SPECIFICATIONS***



## ***McCloskey*** ***S130 Shredder***



## **DESCRIPTION**

Heavy duty Shredder with following features:

- Single shaft shredder.
- Heavy duty one piece chamber.
- Hardened steel swinging flails.
- Hydraulic raise / lower when not required or for maintenance.
- Swinging crash plate to break material.
- Safety cutout when raised.
- Safety support arm when raised.

## **DIMENSIONS**

Chamber width	1000mm (39.4")
Rotor diameter	515mm (20.3")
Blade length	185mm (7.3")
Blade section	70x20mm (2.75x0.75")
Number of blades	22 off
Blade spacing	62.5mm (2.5")

## **HYDRAULICS**

Flow rate	101.2 Lpm (26.7 US gpm)
Hydraulic motor	DBH MCC2213 (85.7cc/rev)
Speed	1180 rpm

