



2025 SPORT FISHING

# FISHPRO™ TROPHY 170

Additional tech and comfort features for an elevated sportfishing experience.

## KEY FEATURES

- Rotax® 1630 ACE™ – 170
- ST3™ Hull
- iDF – Intelligent Debris-Free Pump System
- Garmin® 7" touchscreen GPS & fish finder
- Advanced battery system
- Modular swivel seat
- Rear Deck Extension with LinQ®
- Quick-connect livewell
- LinQ fishing cooler (13.5 US gal/51 L)
- Anchoring system
- Tech Package: BRP Audio – Premium System, full color 7.8" wide display and USB port



Shark Grey and Orange Crush

## CAPACITY

Rider Capacity	3
Weight Capacity	600 lb/272 kg
Rear Platform Capacity (without passenger)	221 lb/100 kg
Fuel Capacity	18.5 US gal/70 L
Glove Box	0.8 US gal/2.9 L
Front Bin	25.3 US gal/96 L
LinQ Fishing Cooler	13.5 US gal/51 L
Storage Capacity – Total	39.6 US gal/149.9 L*

## DIMENSIONS

Length (bumper to bumper)	146.8"/373 cm
Width	49.6"/126 cm
Height (pedestal seat uninstalled)	45.3"/115 cm

## HULL

Type	ST3 Hull
Material	Fiberglass

## OTHER FEATURES

- Seat strap
- iBR® – Intelligent Brake & Reverse
- VTS™ – Variable Trim System
- Boarding ladder
- RF D.E.S.S.™ key
- Direct-access front storage
- Storage bin organizer
- Watertight phone compartment
- Two sets of LinQ attachment points
- Wide-angle mirrors
- Handle grips with palm rest
- Footwell carpets
- Large swim platform
- 5 fishing rod holders
- Angled gunwale footrests
- 2 LinQ front supports
- Cup holder
- USB port
- Tilt steering
- Ski tow eye

## ROTAX ENGINE

1630 ACE – 170

Horsepower	170 hp
Intake System	Naturally aspirated
Displacement	1,630 cc
Cooling	Closed-Loop Cooling System (CLCS)
Reverse System	Electronic iBR**
Fuel Type	87 octane
Throttle System	iTC™ (Intelligent Throttle Control)
Exhaust System	D-Sea-Bel™ system

## GAUGE

Type of Gauge	Large panoramic 7.8" wide LCD display	
Main Functions	• BRP Connect	• VTS
	• Music	• Fuel consumption
iTC System – Mode	• Navigation	• Fuel autonomy
	• Bluetooth® connectivity	• Water temperature
	• Speedometer	• Vehicle hours
WEIGHT	• RPM	
	• Sport mode	• Trolling mode (slow mode)
	• ECO® mode	• Speed regulator

## WEIGHT

Dry Weight	898 lb/407 kg
------------	---------------

## WARRANTY

BRP limited warranty covers the watercraft for one year.

\*Total storage capacity includes LinQ fishing cooler.  
\*\*Electronic brake, neutral and reverse.

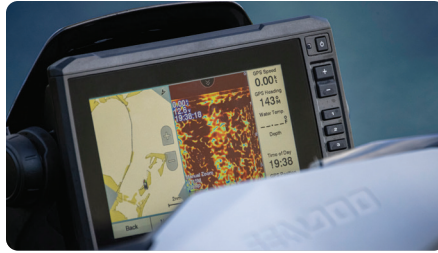


## FEATURE HIGHLIGHTS



### Modular Swivel Seat

Installs in seconds for a game-changing experience. Both the pedestal and backrest stow cleverly away when not in use.



### Garmin 7" Touchscreen GPS & Fish Finder

A top-of-the-line navigation, charting and fish-finding system using an in-hull transducer and mid-CHIRP sonar. Includes token for access to free upgraded regional maps.



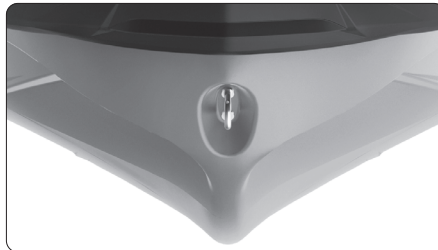
### Quick-Connect Livewell

Turn the LinQ Fishing Cooler into a livewell in seconds. An integrated pump constantly feeds fresh water into the reservoir, keeping your catch or your bait alive all day.



### Rotax 1630 ACE - 170 Engine

The Rotax 1630 ACE - 170 combines plenty of naturally aspirated power and economy, meaning the adventure can be exhilarating and prolonged.



### ST3 Hull

An innovative hull that sets the benchmark for rough water handling, stability, and offshore performance.



### Tech Package

Levels up entertainment and functionality on the water. It includes a factory-installed, truly waterproof Bluetooth audio system, a 7.8" color display and a USB port.