



FINSEEKER

280 DC



OVERALL LENGTH W/ENGINES: 29'

LOA W/OUT ENGINES: 26' 10"

BEAM: 112"

MAX DRY WEIGHT: 8900 LBS

DEADRISE: 22°

FUEL: 165 GAL

BAITWELL: 26 GAL

MAX HP: 600

BASE PRICE W/STD. ENGINE: \$279,995

2023 VALUE ADDING STANDARD FEATURES ADD \$21,995 RETAIL VALUE!

**STANDARD POWERTRAIN - TWIN
MERCURY 200 FOUR STRIKE XL W/DTS
CONTROLS (400 HP) & JOYSTICK PILOTING**

100% COMPOSITE TRANSOM

ANCHOR - S/STEEL, 14 LB. PLOW

**BAIT WELL - REAR AERATED W/ACCESS LID
AND CLEAR ACRYLIC WINDOW**

**BATTERIES INSTALLED & UPGRADED TO
AGM**

BATTERY CHARGER - 4 BANK

**BATTERY MANAGEMENT PANEL W/VSR
CHARGING SYSTEM**

**BILGE HATCH SYSTEM - EASY ACCESS
(ELECTRIC)**

**CANVAS - BOW COVER (COLOR
COORDINATED)**

**CELL PHONE HOLDER W/WIRELESS
CHARGING AND USB-C PORT**

**CLEATS - 8" STAINLESS STEEL PULL UP
(6 TOTAL)**

**COOLER - 70 QUART INSULATED, BUILT-IN
CUPHOLDERS & GRAB HANDLES - S/STEEL**

**DASH - MOONROCK W/BLACK STITCHED
BROW & S/STEEL PUSH BUTTON SWITCHES**

**DOOR - BOW CLOSEOUT W/STORAGE
DRAWER & TRASH CAN**

**F.A.S.T. TAB® VENTED HULL CHINE W/
REVERSED CHINES & DELTA PERFORMANCE
PAD**

**FENDER STORAGE - AFT W/FENDER
RETAINER**

FISH BOXES - IN FLOOR W/MACERATORS

**FLOORING - MOLDED DIAMOND NON-SKID
THROUGHOUT COCKPIT**

**GALLEY - COCKPIT W/STAINLESS STEEL
SINK, COUNTERTOP, DRAWER
REFRIGERATOR, DRINK HOLDERS & TOOL /
TACKLE CABINET**

**GELCOAT - FULL HULL BAND / SOLID
MOONSTONE DECK**

**GPS - GARMIN 9" TWIN TOUCH SCREENS
W/LAKEVU G3 MAPS**

**GPS - GARMIN BLUE CHART G3 MAPS
(EXTRA CHIP)**

**GPS - GARMIN ULTRA HIGH DEF SIDEVU,
CLEARVU AND CHIRP TRADITIONAL SONAR**

**HARD TOP - MOONSTONE ALUMINUM
FRAME W/ROD HOLDERS & ELECTRIC SUN
SHADE**

HEAD - ELECTRIC FLUSH W/HOLDING TANK

**HEAD - VANITY W/VESSEL SINK, GRANITE
TOP, UPPER CABINET, OPENING
PORTLIGHT, MIRROR & HEAD DOOR INSERT
W/STORAGE NETTING**

HELM - MULTI-STAGE FOOTREST

**INTERIOR - SHARK SKIN (SOFT GREY BASE
W/MOONSTONE ACCENTS)**

LIGHTING - DOCKING LIGHTS - S/STEEL

LIGHTING - LED IN COCKPIT

LIGHTING - LED UNDERWATER TRANSOM

**LIGHTING - OVERHEAD WORK LIGHTS S/
STEEL AFT PROJECTING**

**ROD HOLDERS - 4 AT GUNWALE & 4 ON
HARD TOP FRAME**

**RUBRAIL - S/STEEL INSERT W/WHITE
EXTRUSION**

**SEATING - AFT BENCH SEAT, STOWS AWAY
FOR ADD'L FISHING AREA**

SEATING - ARM RESTS, BOW FLIP DOWN

SEATING - HELM SEAT, DOUBLE WIDE W/

**STAINLESS STEEL FRAME, DUAL FLIP UP
BOLSTERS & ARM RESTS**

**SEATING - DELUXE COMPANION BUCKET
W/FLIP-UP BOLSTER**

**SHOWER - HAND HELD COLD FRESHWATER
AT STERN**

SPEAKERS - WET SOUNDS (8 TOTAL)

STEERING - JOYSTICK PILOTING

**STEERING WHEEL - DELUXE W/SPINNER
HANDLE**

STEREO - LCD TRANSOM REMOTE

STEREO - WET SOUNDS PREMIUM

**STORAGE - 2 UNDER SEAT TACKLE BOXES
W/6 TRAYS EACH**

STORAGE - IN FLOOR UTILITY, 8'

**STORAGE AREAS W/IMPACT RESISTANT,
NON-MARRING COATING**

**SWIM PLATFORM - FULL WALK AROUND
W/SOFT TOUCH MAT**

TABLE - PORTABLE SIDE MOUNT

**TRAILER - ALUMINUM W/DEXTER TORSION
& BRAKES, BLACK ALUMINUM RIMS,
DIAMOND PLATE FENDERS, WELDED TIE
DOWNS & TAILLIGHT SECTION, LED
LIGHTING & V BLOCK FOR WINDLASS**

TRIM TABS W/INDICATORS

WASHDOWN - RAW WATER

WINDLASS W/ROPE AND CHAIN

**WINDSHIELD - LOW PROFILE TEMPERED
GLASS W/STAINLESS STEEL HEADER**

FINSEEKER 2025 280 DC



FINSEEKER 2025 280 DC



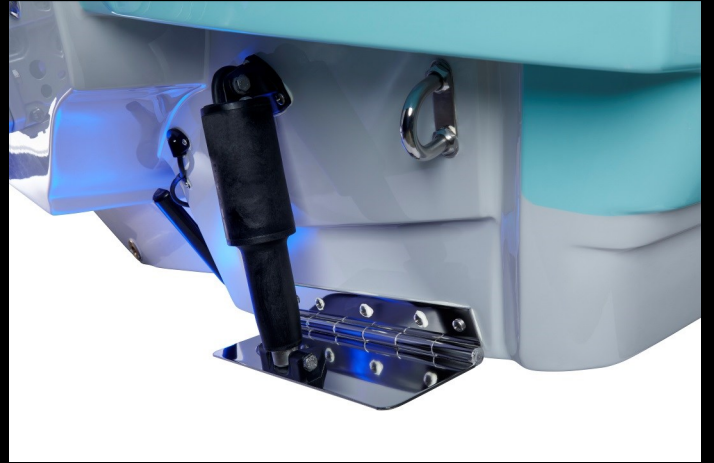
FINSEEKER 2025 280 DC



FINSEEKER 2025 280 DC



FINSEEKER 2025 280 DC



FINSEEKER 2025 280 DC



FINSEEKER 2025 280 DC



FINSEEKER 2025 280 DC



FINSEEKER 2025 280 DC



FINSEEKER 2025 280 DC

