



Image of Model #14100057W\*. Options and features may differ.

## SPECIFICATIONS

CAPACITY	SUSPENSION	BOW EYE TO TRANSOM MAXIMUM	BOW EYE TO TRANSOM MINIMUM	BUNK TYPE	TIRE SIZE	OVERALL WIDTH	BETWEEN FENDERS	OVERALL LENGTH
1,000	SPRING	14'	7' 8"	EDGE	4.80x12B	57"	41"	16' 3"

## STANDARD FEATURES



### Bias-Ply Tires

High quality USDOT-rated tires. Standard on all 5 STARR, pontoon, skiff and jon models, and models 90" wide and narrower. Easily upgraded to radial tires at time of order. Includes [KENDACARE - LOADSTAR TIRE ROADSIDE ASSISTANCE PROGRAM](#).



### Galvanized Steel Frame

Tubular structural steel, fully hot dip galvanized, provides the ultimate finish for any boat trailer. Tubular design shrouds wiring and brake lines from damage. All machining and welding is performed before galvanizing, so there are no surfaces left unprotected from a boat trailer's ultimate enemy: corrosion.



### Balanced Wheels 13" and Larger

CounterAct Wheel Bead Balancing is now included on all 13" and larger wheel assemblies as a standard feature. The wheels dynamically balance during each use. Visit [www.counteractbalancing.com](http://www.counteractbalancing.com) for more information.



**Stainless hardware**

Includes U-bolts, hex head bolts, Ny-lock nuts, washers, and screws. Includes all standard automotive grades 3 and 5 hardware. Excludes fasteners requiring grade 8 rating. Also excludes hardware for outsourced optional equipment.



**Adjustable Carpeted Bunks**

Traditionally known as V-bunks, this system offers both high strength and a wide range of adjustability. Out of adjustment? There are shorter and taller bolster brackets available in many heights.



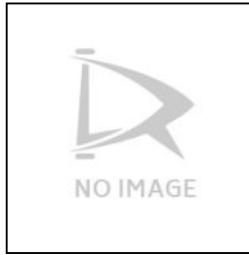
**NMMA / NATM Certified**

Each year Load Rite trailers undergo a detailed inspection process in order to earn the right to proudly display this certification on products we manufacture.



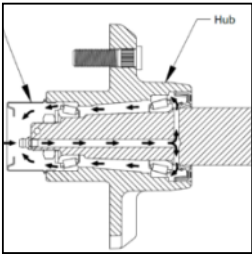
**LED Lighting**

LED lights offer far greater reliability than incandescent fixtures. Long-lasting and waterproof design make these lights ideal for any trailer application.



**KendaCare – LoadStar® Tire Roadside Assistance Program**

[Click here](#) for more information from Americana Tire.



**Greaseable Hubs**

Trailer with peace of mind knowing that you've inspected the condition and topped off the lubricant level in each hub of your trailer.



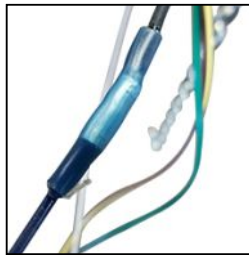
**Plastic Fenders**

Impact-resistant plastic fenders on models with 12" and smaller wheels. Wheels 13" and larger require aluminum fenders.



**Aluminum Diamond Plate Fenders**

A stylish design combined with extreme durability. Standard on all single axle models with 13" and larger wheels.



**Heat Shrunk, Shielded Wiring**

Durable heat-shrunk connections help prevent corrosion for increased reliability of the lighting system.



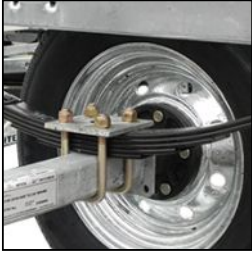
### 2 Plus 3 Years Coupler to Taillight Warranty

Load Rite's premiere warranty exclusive to our Elite line of trailers.



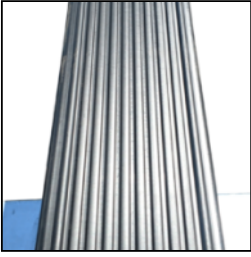
### Torsion Axle Suspension on Single Axle Models\*

Availability varies. Consult your dealer.



### Galvanized Axle With Leaf Springs

# OPTIONS



## Plastic Bunn Covers

These multi-purpose covers provide a smooth surface to help a metal-hulled boat or pontoon to slide easier when launching and loading. They also offer an insulating barrier to help prevent corrosion for metallic hulled craft. Protect your aluminum hull. **Highly recommended for metal-hulled boats and pontoon applications. Not recommended for gel-coat, plastic, or painted metal hulls.**



## Steady Rest

Carpeted bunn section positioned above and perpendicular to the trailer tongue. Provides an extra resting and balance point, and helps prevent keel contact with the tongue when loading in certain ramp conditions.



## Tongue Jack

Tongue jacks are recommended on all trailers. Appearance and specifications vary by application. Tongue jacks are optional on all models where not original equipment.



## Spare Tire and Carrier

The most important option to consider, every trailer should have a spare tire readily available. Consult dealer for recommended bracket for individual application.



## PVC Side Guides

PVC side guides provide additional guidance when lining up to load on steep ramps. Optional on most other boat trailers including all 5 STARR models.



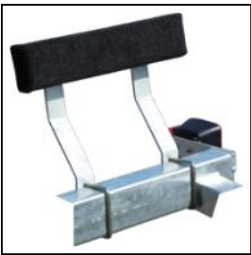
## Radial Tires

Smoother riding and longer wear life than many bias-ply tires. A highly recommended upgrade. Available for 13" and larger wheels.



## 2" by 6" Bunks

Marine grade carpet over 2" x 6" dimensional lumber.



## Carpeted Side Guides

Standard on most skiff and jon models.